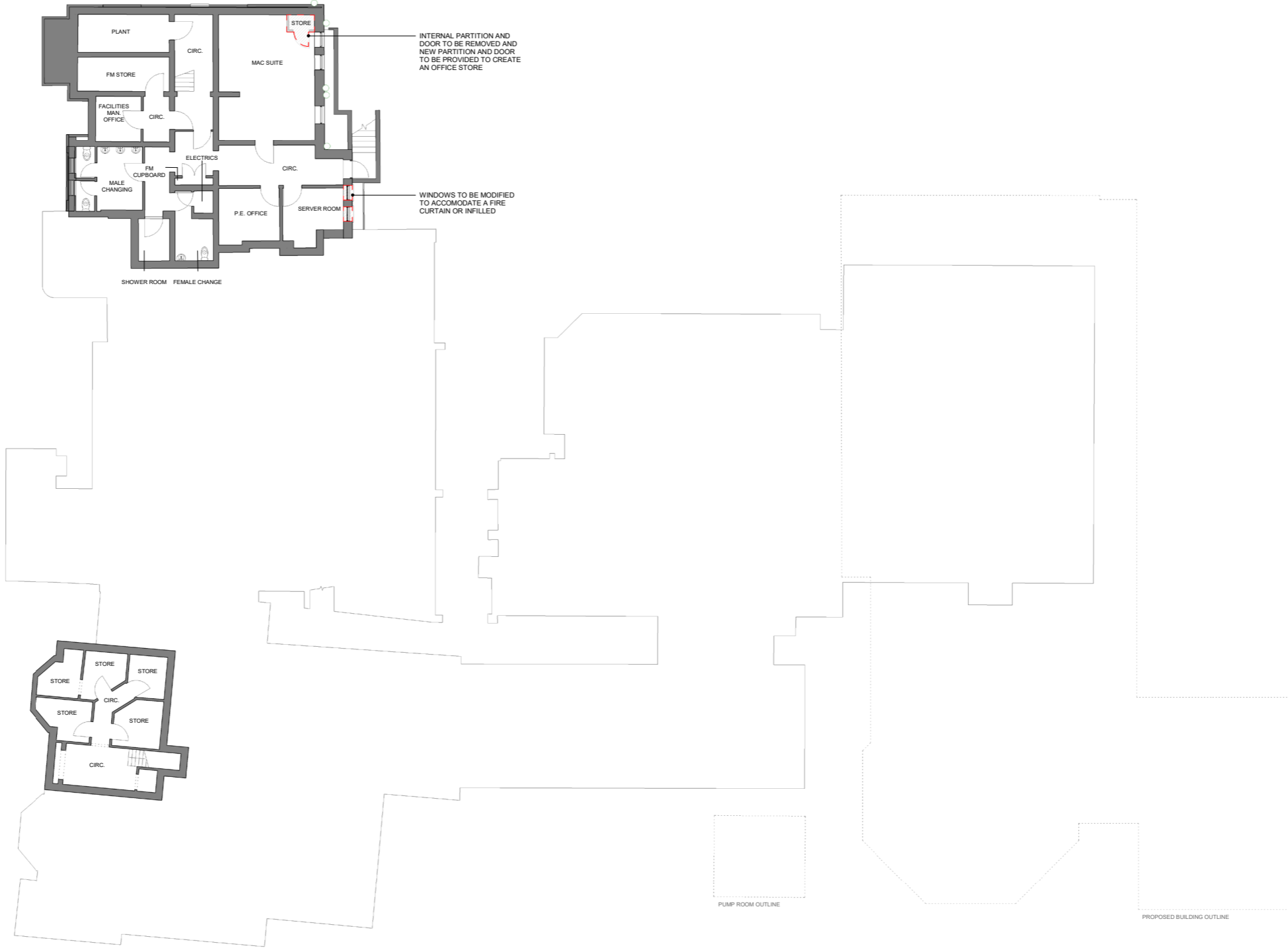




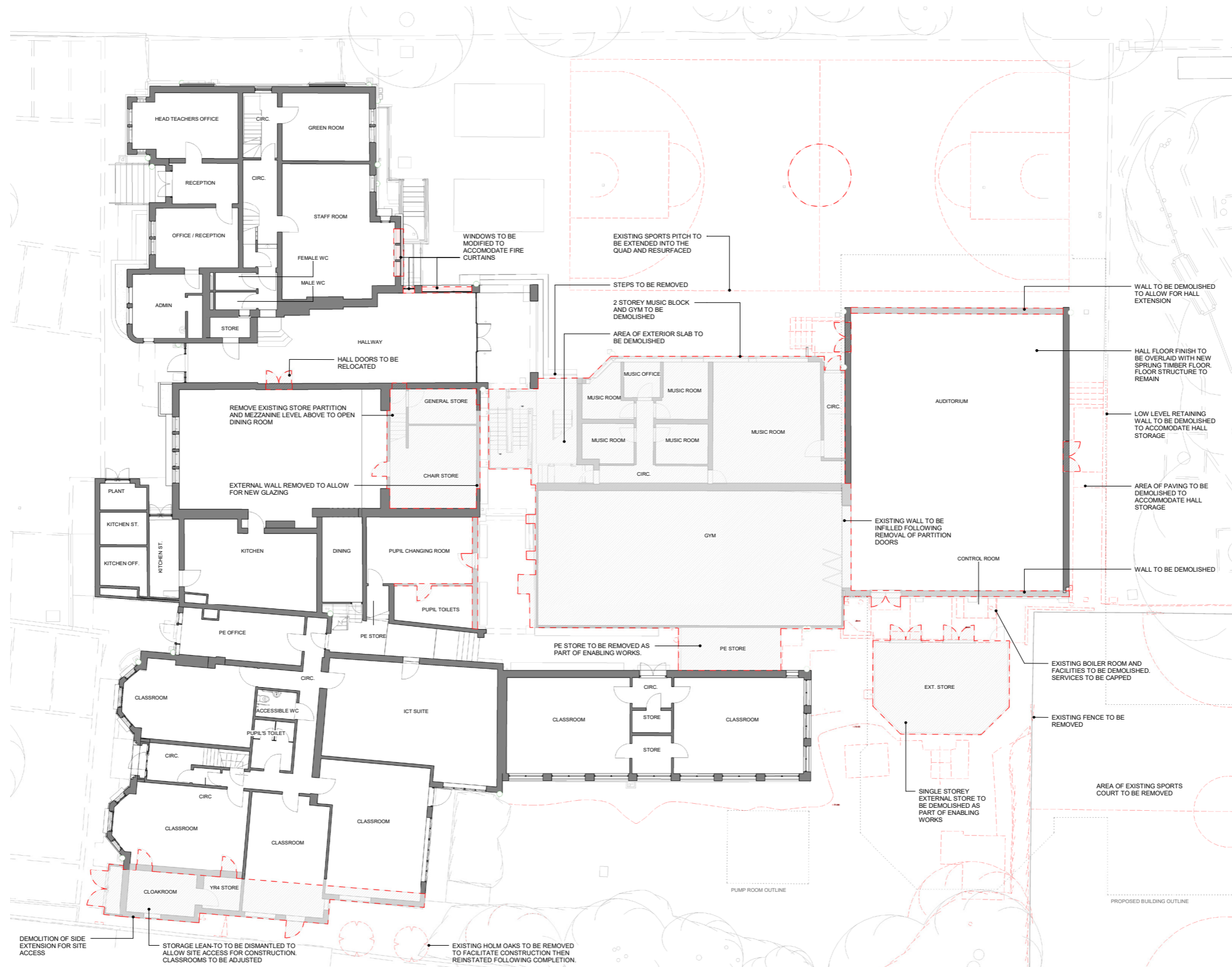
KEY: DEPARTMENT COLOURS

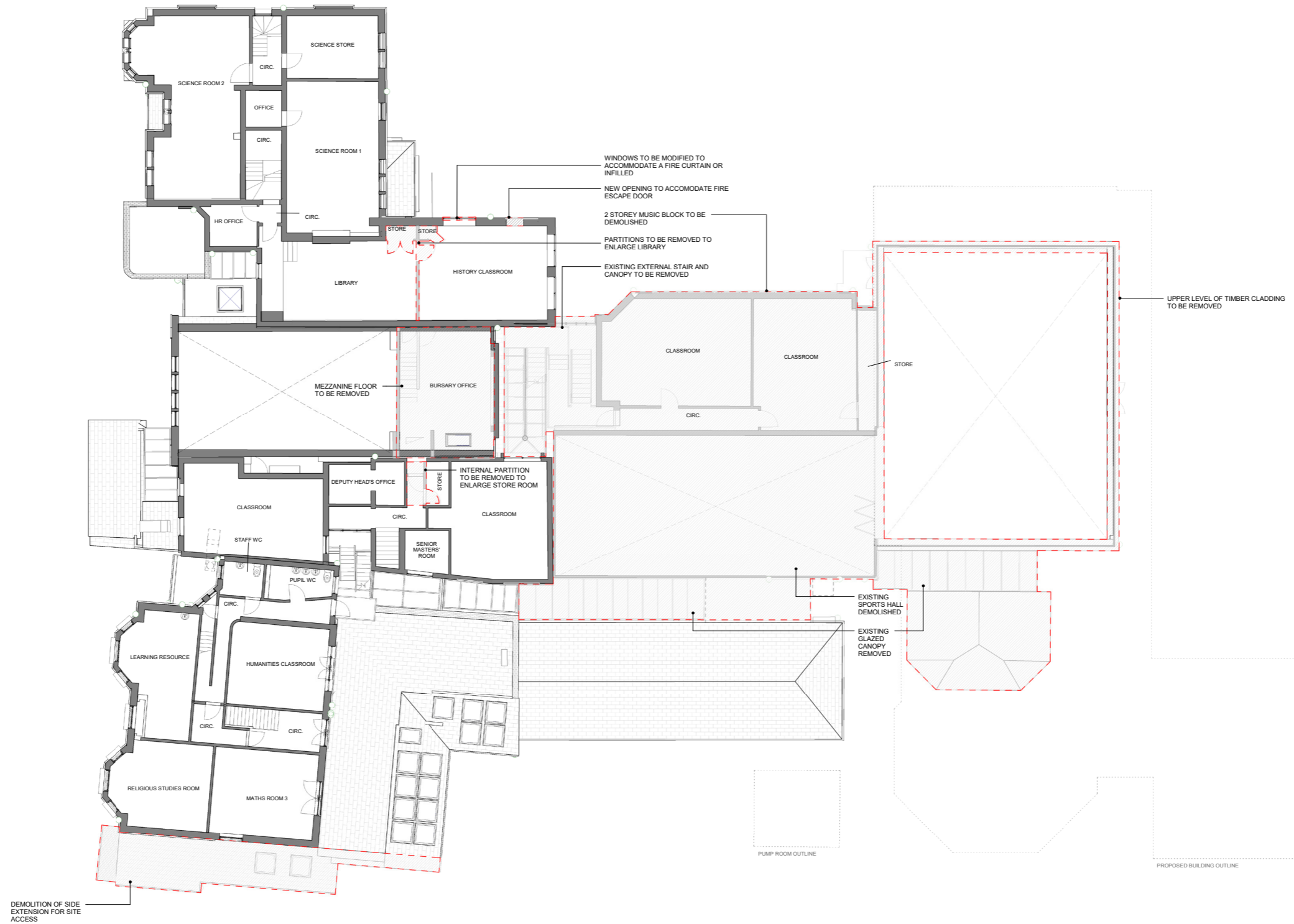
- General teaching
- Large spaces
- Learning resource
- Staff and administration
- Storage
- Non-net area

⌚ ROOF PLAN NTS

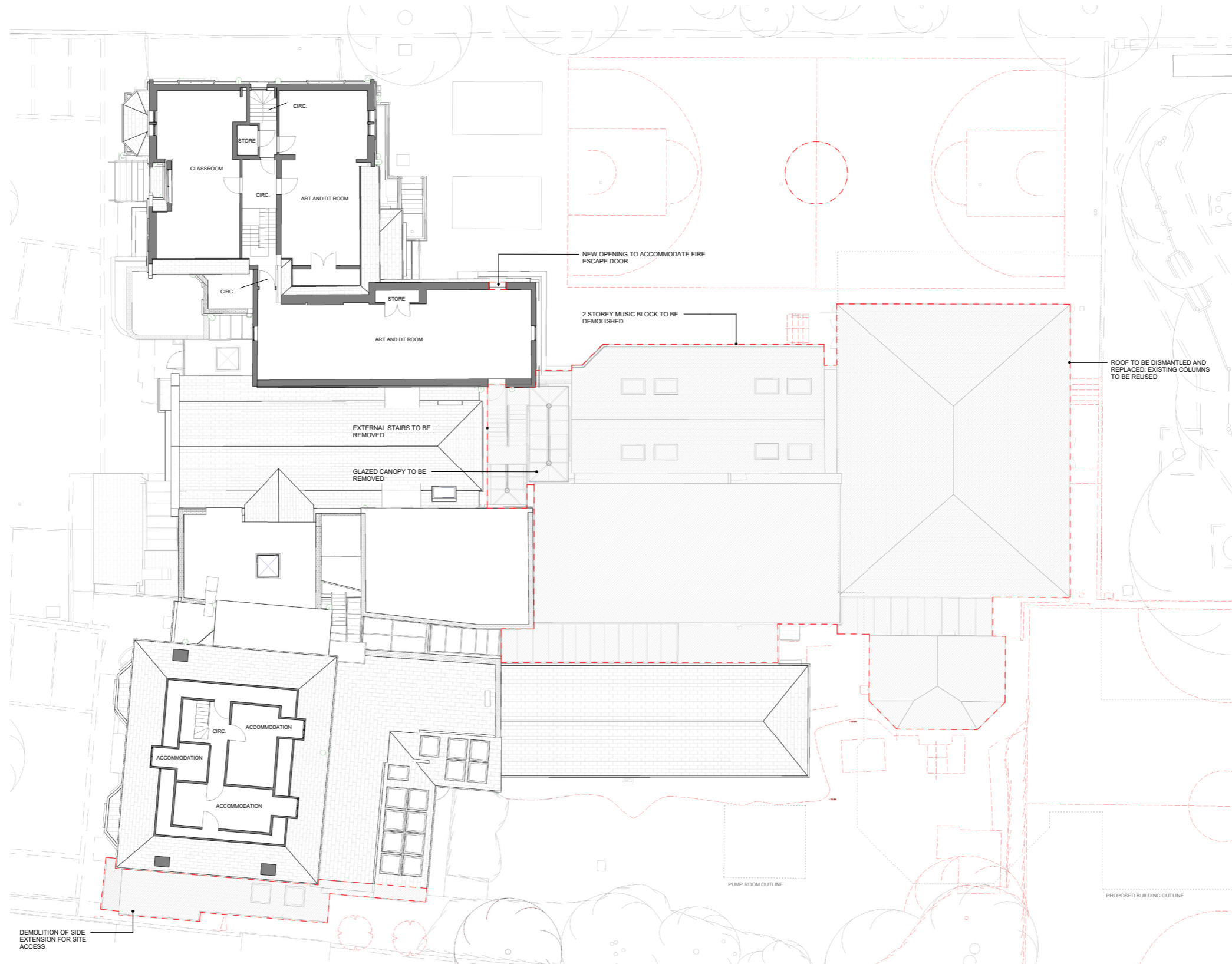


⌚ LOWER GROUND FLOOR PLAN NTS



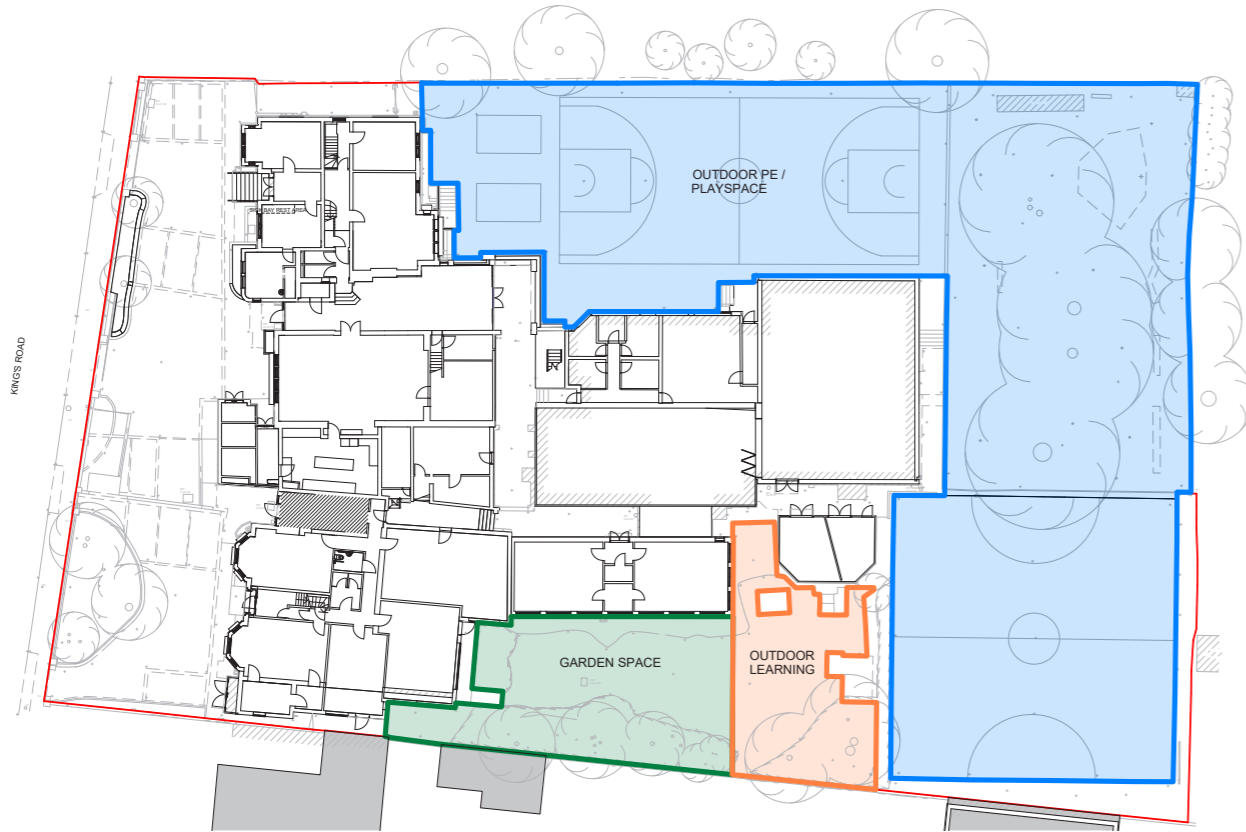


⌚ FIRST FLOOR PLAN NTS



09.1 EXTERNAL PLAY STRATEGY

The diagrams show the existing external areas compared with the current proposed external areas and those proposed for the previous planning application at Kings House School. Please review these with the table below, which breaks down their respective areas.

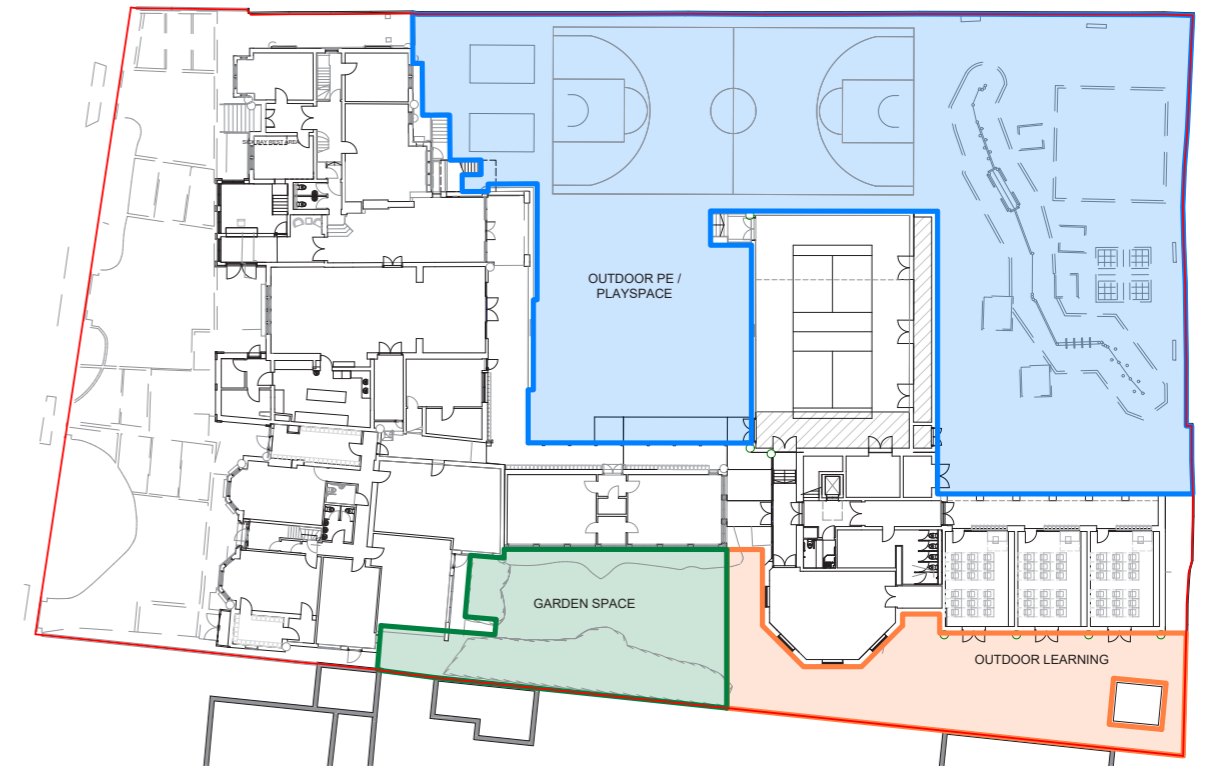


Existing External Area

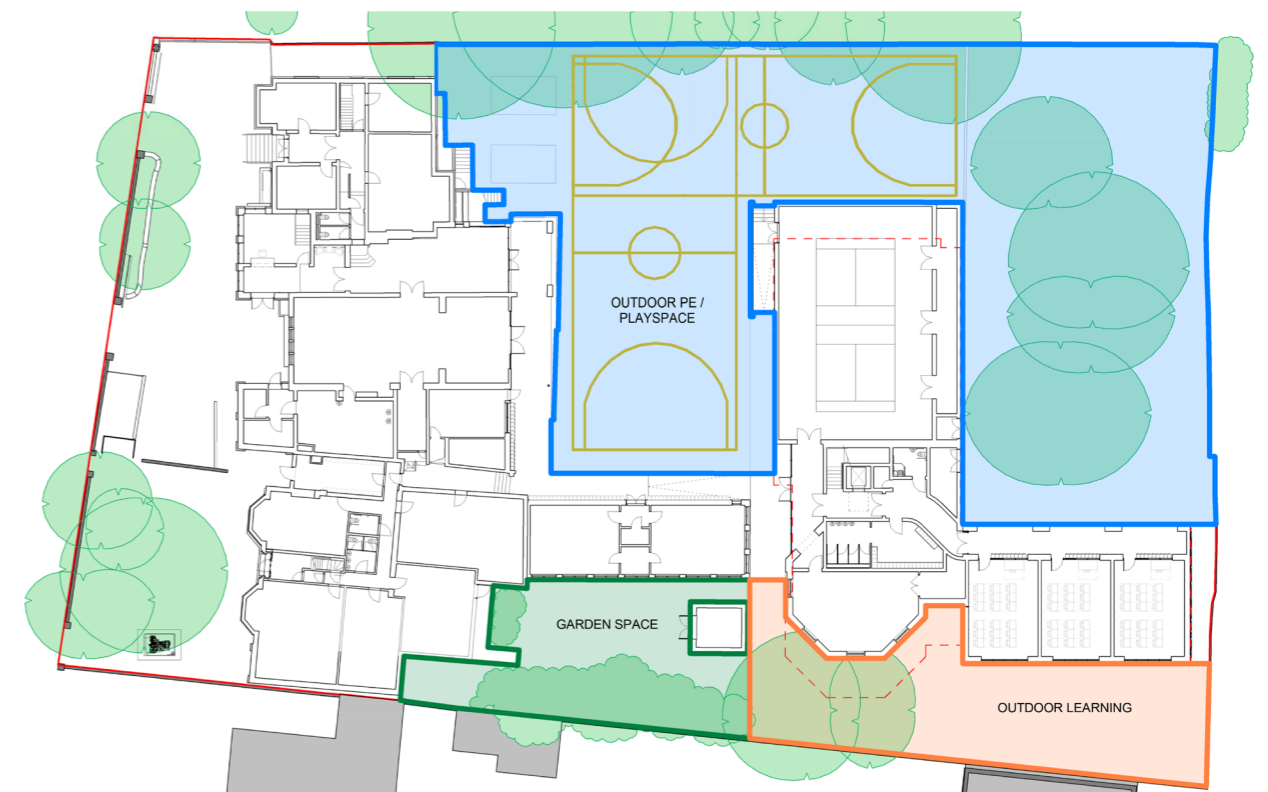
	Existing Area	Previous Application Area	Current Proposed Area
Outdoor P.E. / Playspace	1698m ²	1585m ²	1535m ²
Outdoor Learning	161m ²	261m ²	319m ²
Garden Space	241m ²	246m ²	230m ²
TOTAL EXTERNAL AREA	2099m²	2092m²	2084m²

KEY: EXTERNAL AREAS

- Outdoor P.E. / Playspace
- Garden Space
- Outdoor Learning



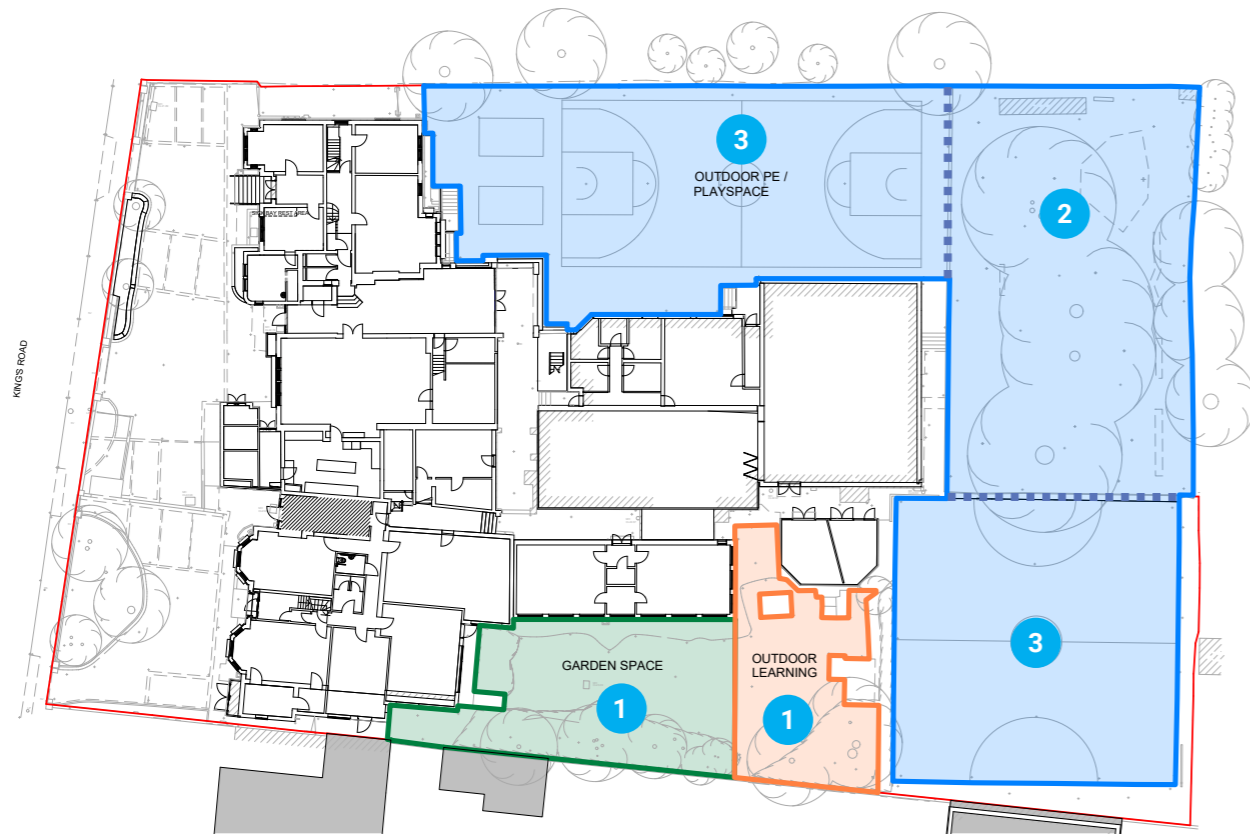
Previous Application External Area



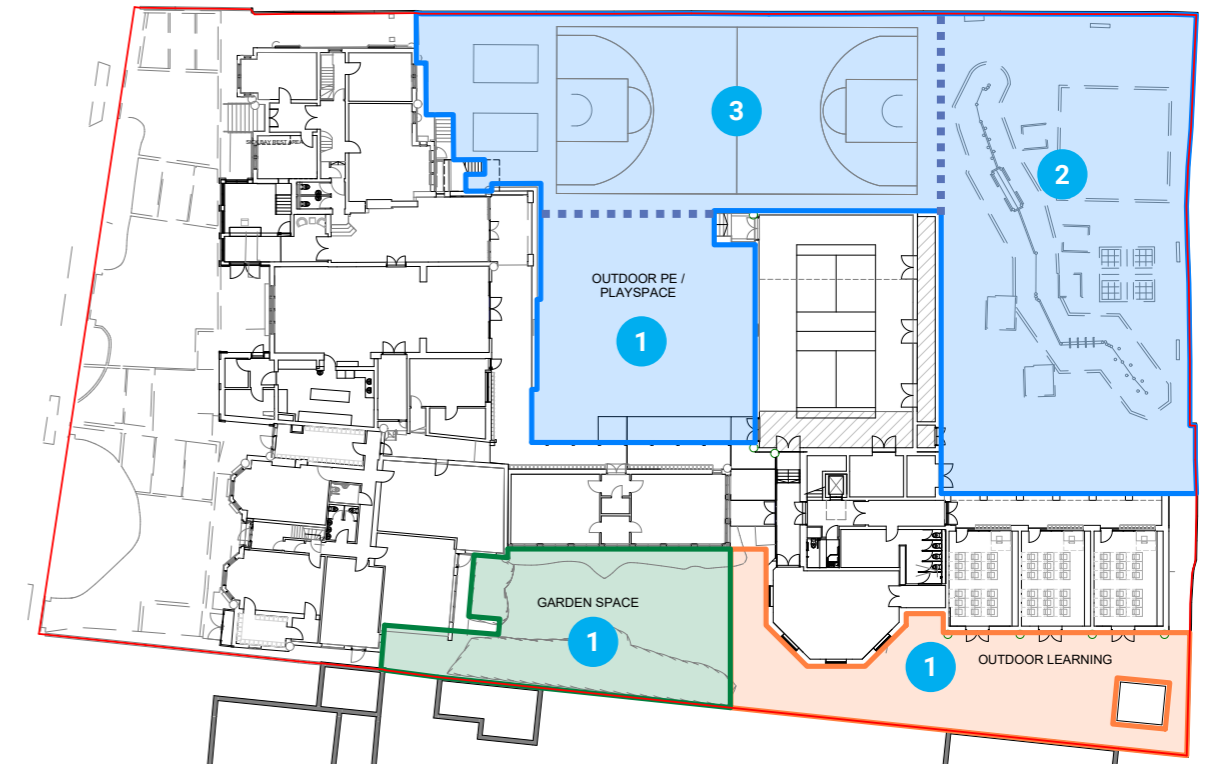
Current Proposed External Area

09.2 EXTERNAL SURFACES

The diagrams below show the different floor surfaces for each of the external areas.



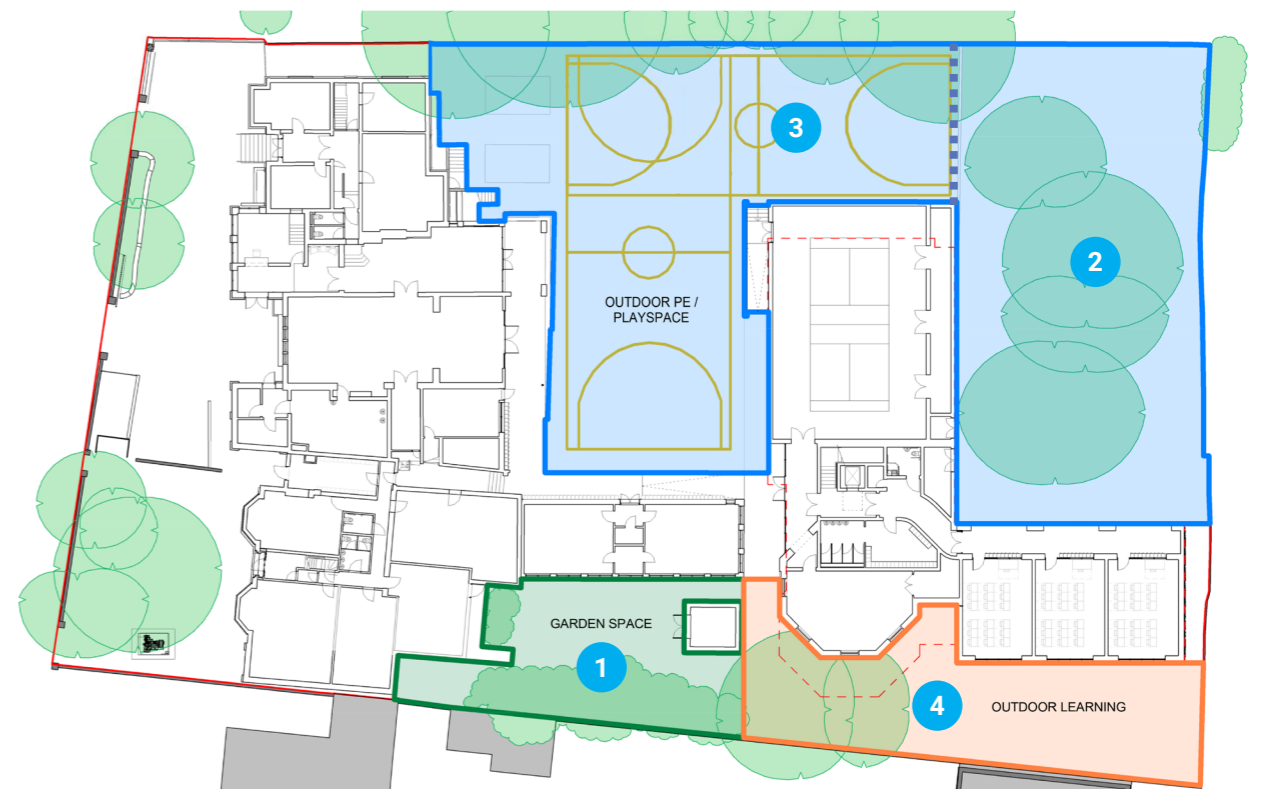
Existing External Area



Previous Application External Area

KEY: EXTERNAL SURFACES

- 1 Grass
- 2 Rubber play surface (existing) with climbing frame.
- 3 Rubber crumb play surface
- 4 Grass / paving / planting



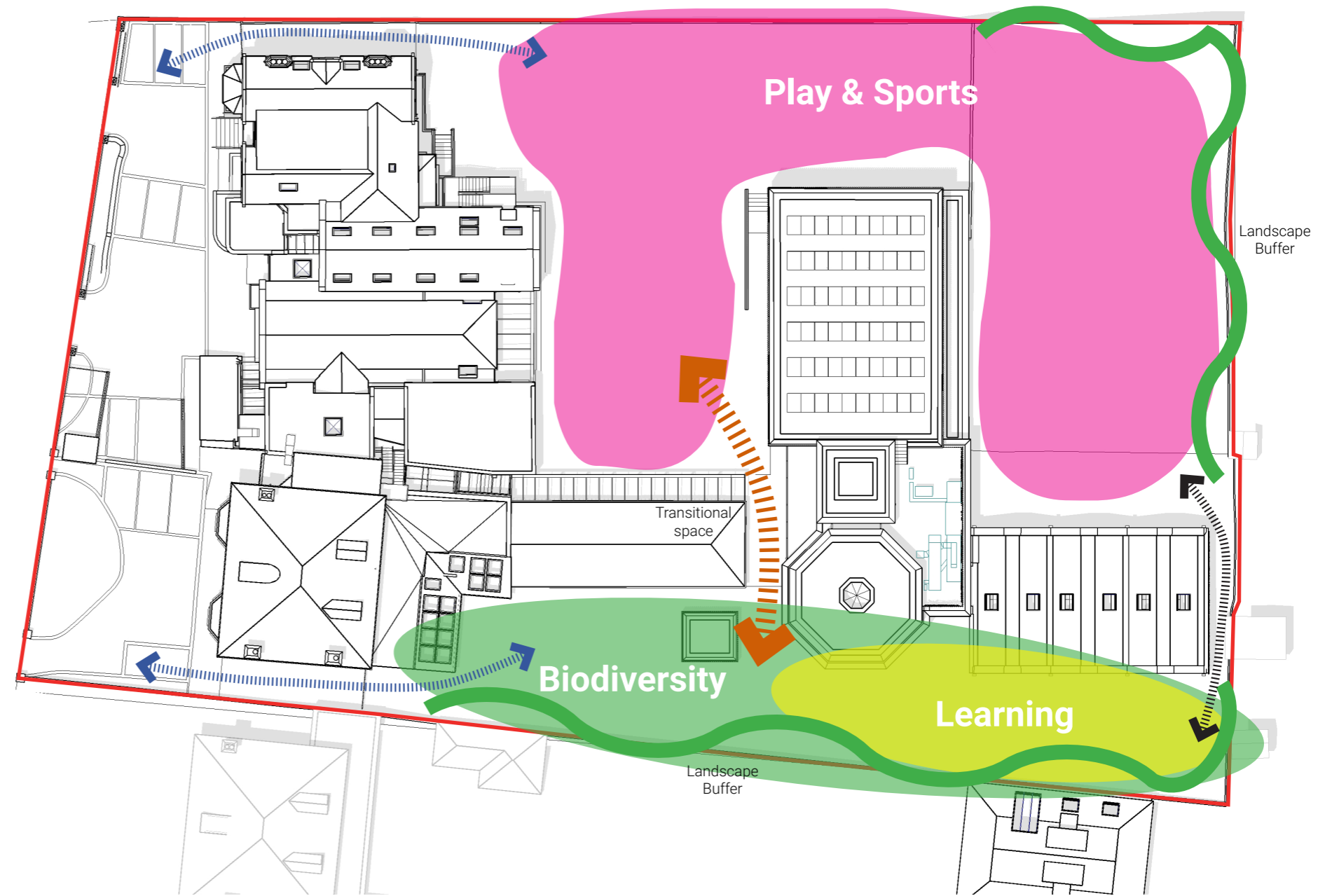
Current Proposed External Area

LANDSCAPE STRATEGY




The landscape design will maximise the potential of the external spaces proposing environments that foster learning and development as well as promoting biodiversity.

The proposals put emphasis on existing features such as trees and use them to both buffer and enclose spaces from neighbouring properties. Existing trees are also used to strengthen the sense of place and identity.

The proposed spaces generally sit within the categories outlined on the diagram on the right. The north of the playground being aimed at more active play and sports. While the spaces in the south of the site are proposed to offer learning opportunities for the pupils as well as promote biodiversity. Between both areas sits a key transitional space that lies in the heart of the playground.



KEY: EXTERNAL AREAS

-  Transitional Space
-  External Access
-  Maintenance Access