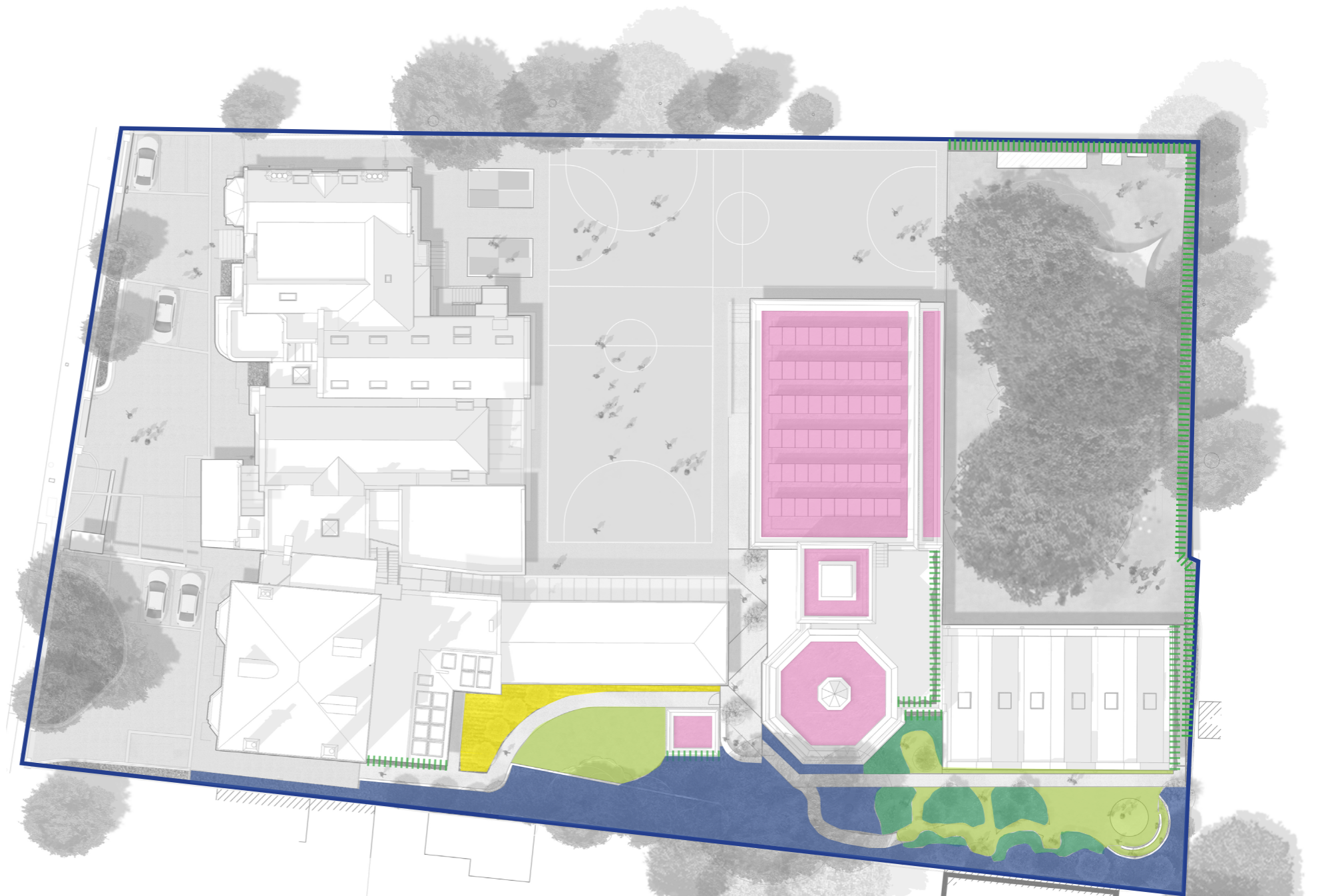


09.7 LANDSCAPE DESIGN - SOFT PALETTE

The soft palette seeks to add interest and enrich the setting of the external spaces. Biodiversity will be enhanced through a proposed palette that favours native species and offers year round interest.

The majority of species are shade tolerant with new understory planting proposed under existing trees. Within the Garden Space herbaceous planting will be largely ornamental whereas the outdoor learning garden will have a more robust palette with a central orchard meadow.

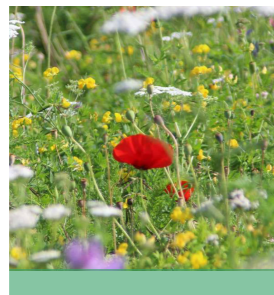
The architectural proposals allow for further planting opportunities for climbers as well as large areas of biodiverse roof.



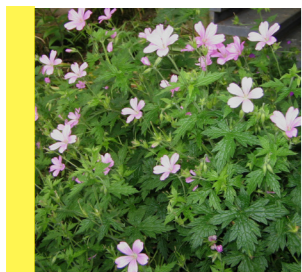
Biodiverse roof



Lawn



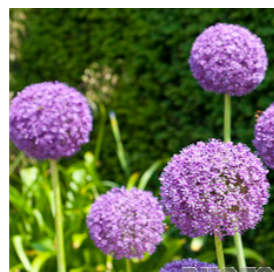
Meadow / Wildflower



Geranium species



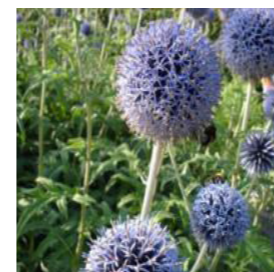
Anemone species



Allium



Aster divaricatus



Echinops bannaticus



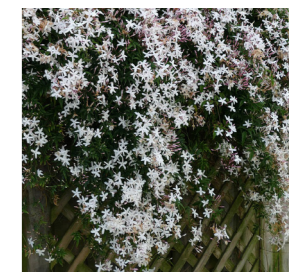
Lavandula angustifolia



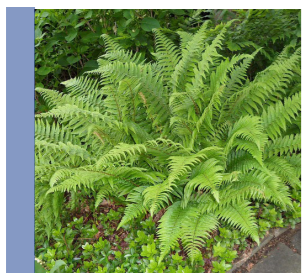
Rosa canina



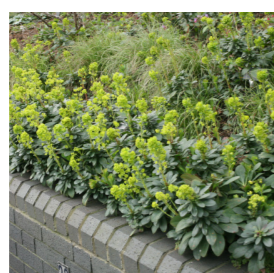
Clematis vitalba



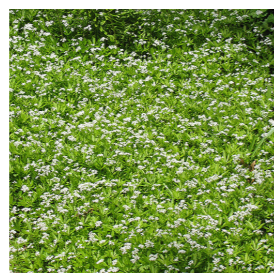
Jasminum officinale



Dryopteris filix-mas



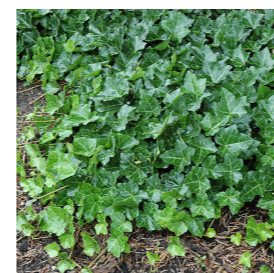
Euphorbia amygdaloides



Galium odoratum



Ligustrum vulgare



Hedera helix 'Hibernica'



Liriopie muscari



Asplenium scolopendrium



Lonicera periclymenum