

## 09.8 LANDSCAPE DESIGN - PROPOSED TREES

The architectural proposals respond to the trees on site retaining all but two of the existing. Prominent trees such as the Holm Oaks in the north east of the site are framed and their importance reinforced.

On the southern boundary the existing tree line is retained where possible (a category B Holly & a category C Ash are proposed to be removed to facilitate development) and further tree planting is added to bolster this area and mitigate for any loss.

The proposed trees are an opportunity to add further character to the spaces as well as enhance biodiversity. Learning opportunities have also been created through this planting choosing species with year round interest.

Note that any resurfacing or proposed pathways within root protection areas is to be of a no dig construction.

Please refer to the Arborist's Arboricultural Assessment submitted as part of this proposals for more detail on existing trees.



*Prunus avium* - 1-1.5m height Multi-stem tree (3 No.)



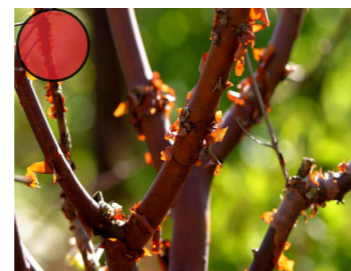
*Ilex Aquifolium* - 10L. Single stem tree / large shrub (3No.)



*Corylus avellana* 'contorta' - 20L. Large Shrub (4 No.)



*Malus sargentii* 'Tina' - 10L. pot single stem tree (7 No.)



*Acer griseum* - 18-20cm girth single stem tree (1 No.)



*Crataegus* - 10-12cm girth single stem tree (4 No.)



Existing trees retained



Trees proposed removed to facilitate construction then reinstated following completion of the works (2No.)

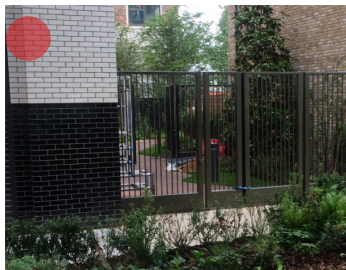


Trees proposed to be removed (2No.)

Proposed furniture within the scheme adds amenity and supports the uses within each space. Boundaries between the Garden Space, Cherry Walk and the Outdoor Learning Garden are proposed to be a 1.8m high metal railing disguised within the planting beds. Access is gained through secure metal gates.

A timber bench is proposed to the south of Cherry Walk offering a dwell space ahead of entering the gardens to the east & west.

The outdoor learning amphitheatre in the south east of the plan is proposed to have seating logs centred on a lawn 'stage' inkeeping with the informal character of the space.



Lockable metal gate



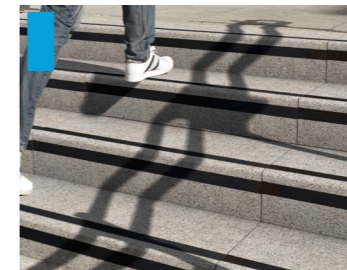
1.8m high metal railing



Timber bench



Seating logs

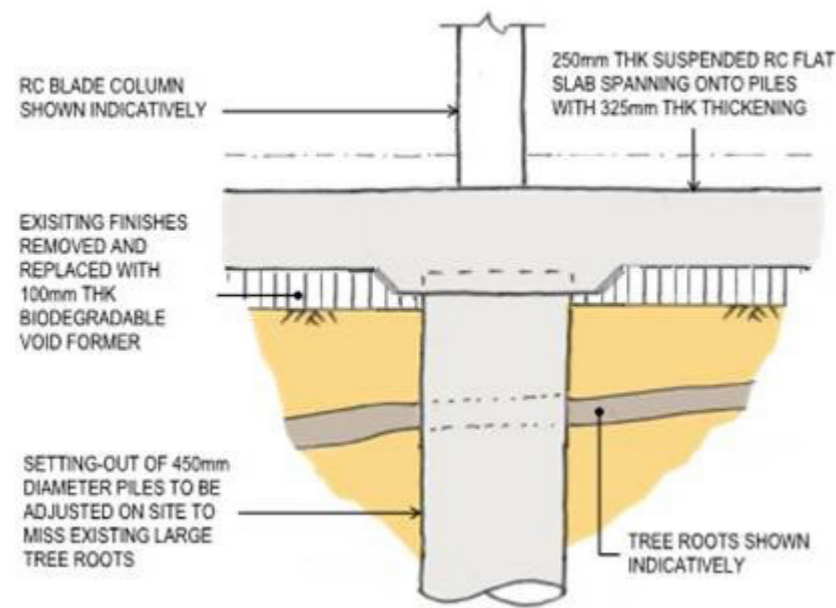


Steps

## TREE PROTECTION MEASURES

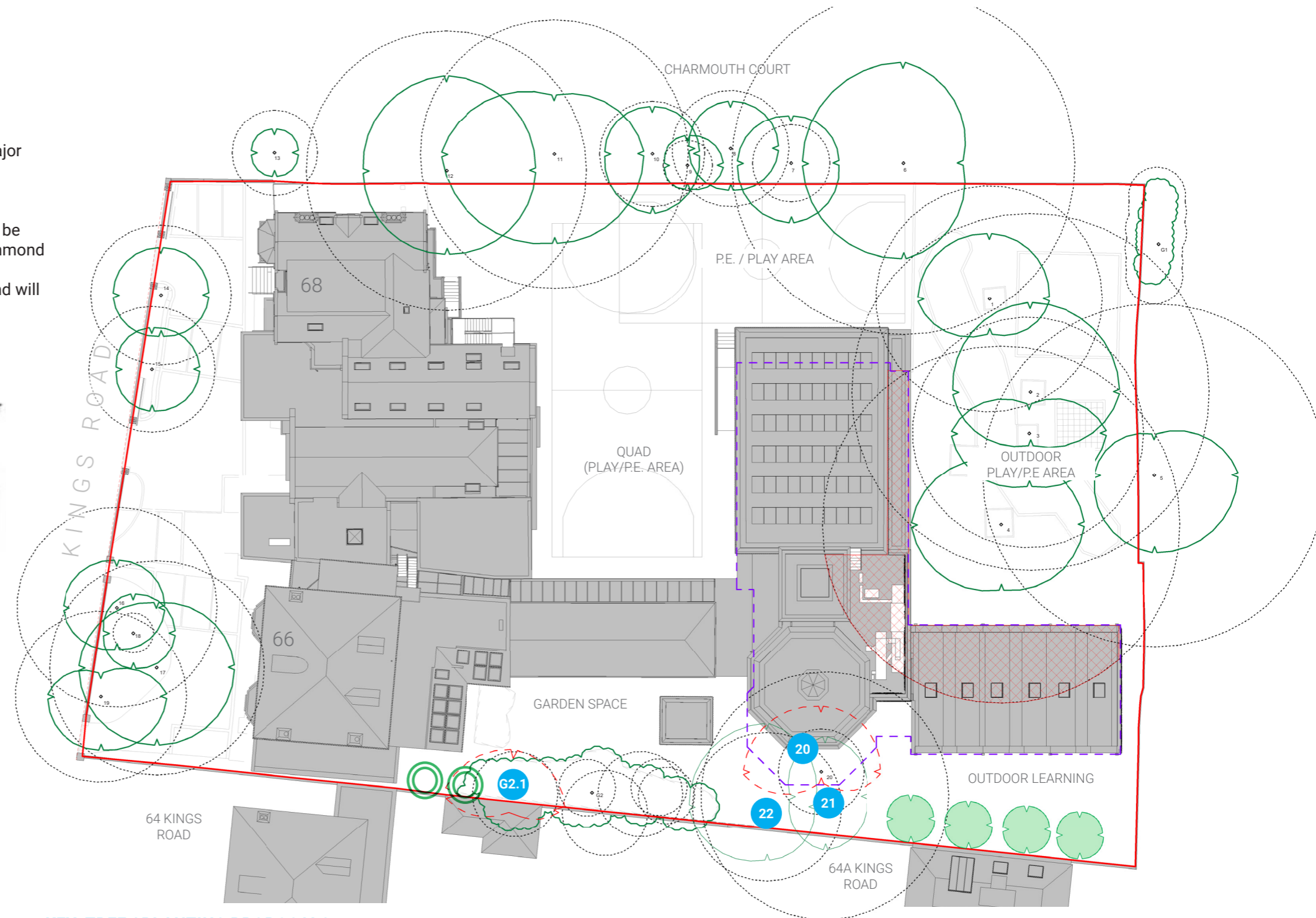
- The new classrooms have been located and designed to avoid damaging any of the mature trees.
- The foundations have been designed to sit above the level of the existing tree roots and piles will be used to avoid severing any major roots.
- The substructure design is adaptable for when tree roots are discovered, as pile locations are flexible to avoid tree roots.
- Where the removal of 2 trees is required to reconfigure, these will be replaced with similar planting in line with London Borough of Richmond Upon Thames policy.
- An arboriculturalist has surveyed the existing trees in the area and will continue to assist with the design of the scheme.

## PROPOSED FOUNDATION DETAIL



## KEY: TREE PROTECTION PLAN

- Existing tree and Root Protection Areas
- Overlap with Root Protection Areas
- Newly planted hornbeams
- Proposed removal of existing trees
- Trees proposed removed to facilitate construction then reinstated following completion of the works (2No.)



## KEY: TREE / PLANTING PROPOSALS

- 20** Common Ash tree to be removed, as per the previous application.
- 21** **22** Moving the arts block 3m north allows the Maidenhair and Common Lime to be retained. The previous application proposed these to be removed.
- G2.1** Tree G2.1 to be removed in order to provide access for construction vehicles, this unchanged from the previous application.