





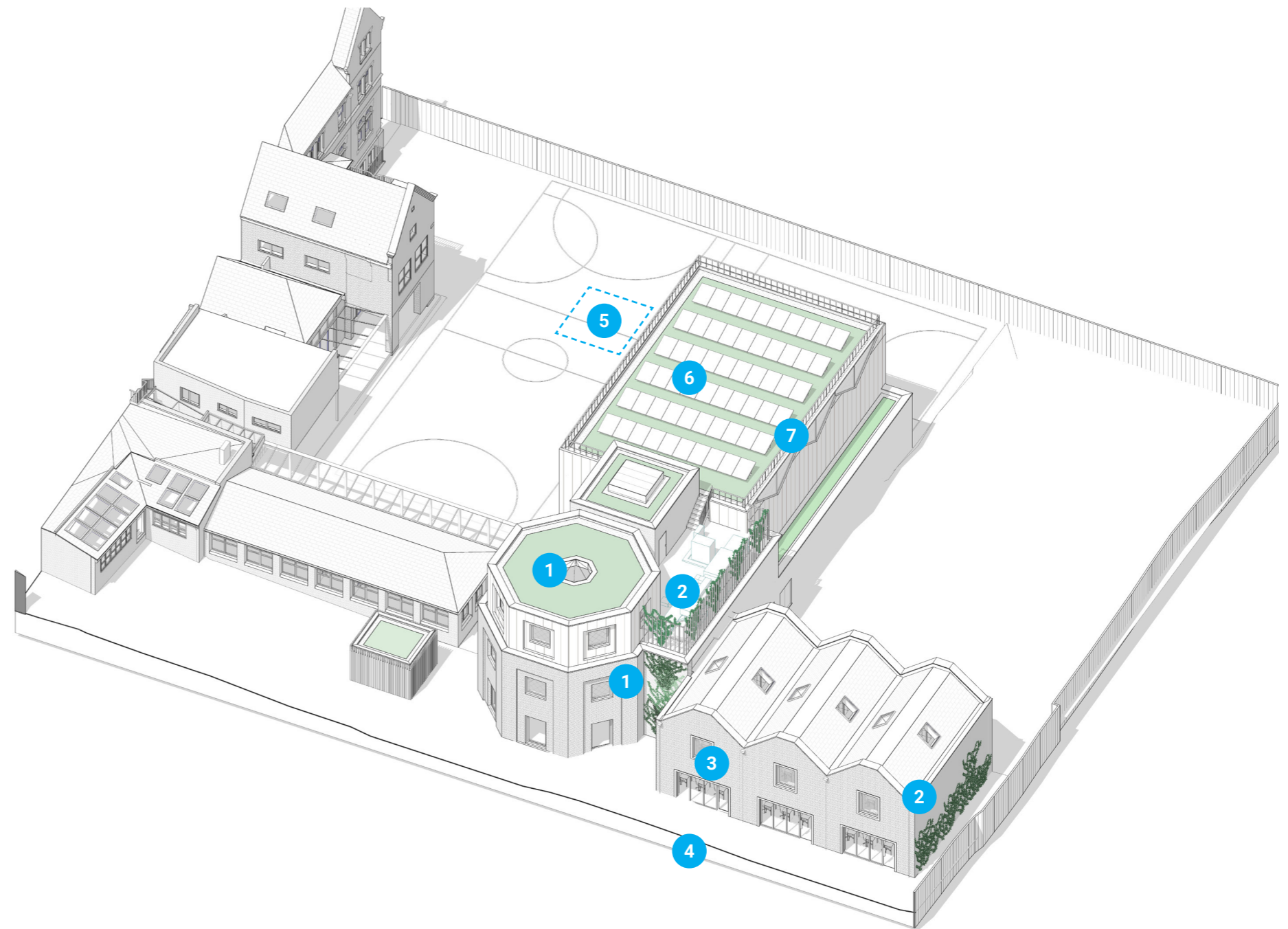
This proposal for King's House School has been designed to strict sustainability criteria to ensure it does not waste resources and contributes positively to the neighbourhood. The project is targeting a score of 'Excellent' in the Building Research Establishment Environmental Assessment Method (BREEAM). These criteria ensure sustainable principles are adhered to at all stages of the project, from conception through to construction and in the ongoing performance of the buildings.

### KEY: SUSTAINABILITY STRATEGIES

- 1 Where possible, green roofs will be provided, increasing the biodiversity of the site. A green wall is also proposed separating the arts block from the classroom block.

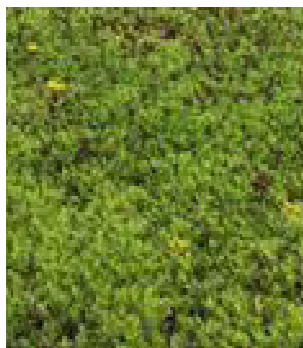
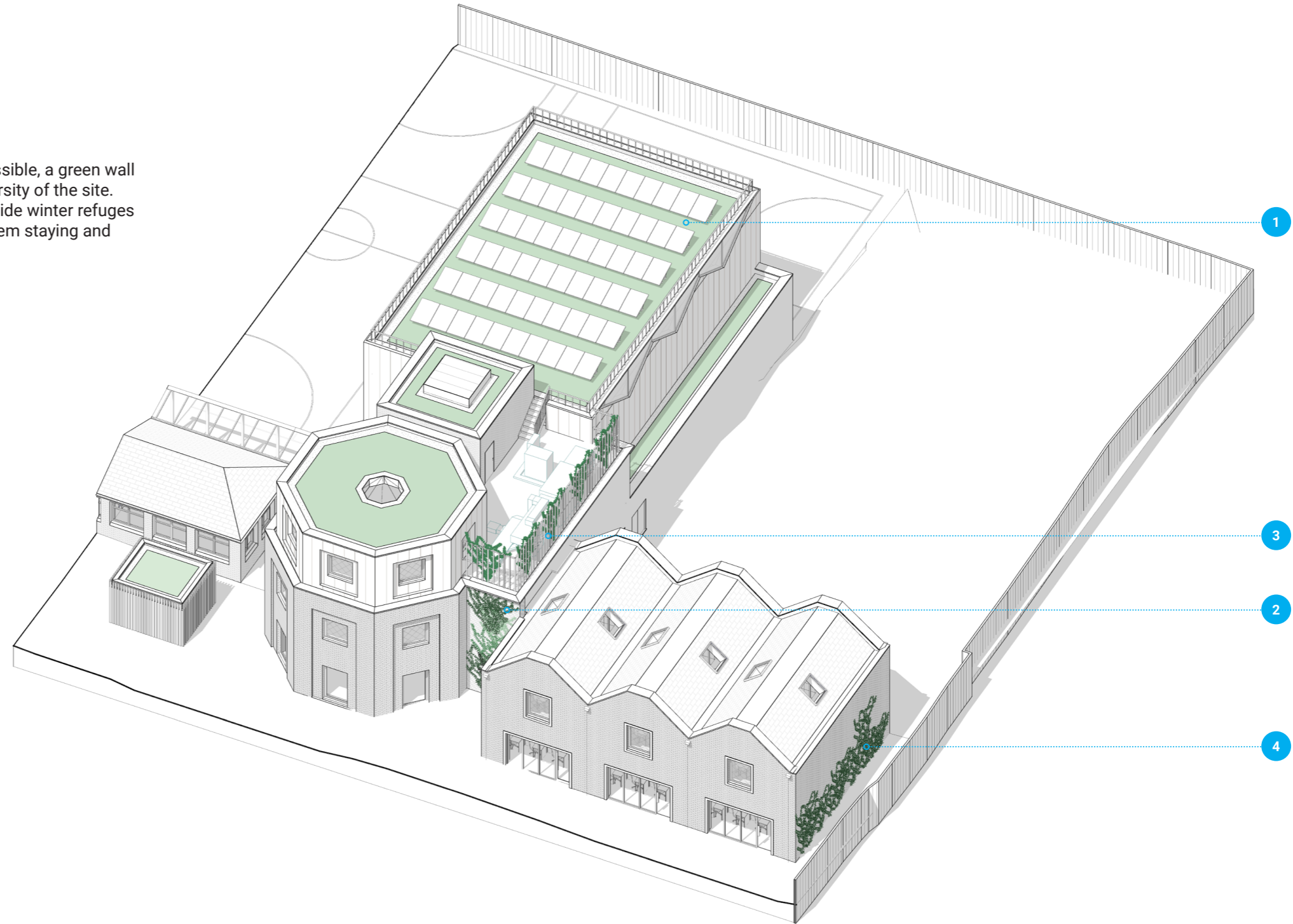
Green wall area = 21m<sup>2</sup>  
 Green roof area = 336m<sup>2</sup>  
 Total = 357m<sup>2</sup>

- 2 Climbing plants proposed to the timber screen around the plant and the eastern most wall (facing Denbigh Gardens properties)
- 3 Most classrooms will be naturally ventilated with opening windows.
- 4 New planting along the southern boundary will increase the overall amount of trees on the site.
- 5 A below ground geocellular attenuation tank holds the development's storm water and slowly releases it to reduce the impact of the new building on the surrounding sewer system.
- 6 Some of the school's energy will be provided by solar panels on the roof of the sports hall.
- 7 Materials will be supplied from sustainable sources as part of the BREEAM criteria.



## 010.2 BIODIVERSITY

The anticipated scheme proposes green roofs where possible, a green wall and external wall climbers to increase the overall biodiversity of the site. Bird boxes could be integrated into the green wall to provide winter refuges for roosting birds and possibly increase the chance of them staying and nesting there when spring comes around.



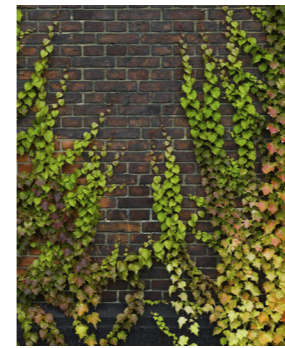
1 - Green roof



2 - External Green wall



3 - Timber screens with greenery



4 - Wall Climbers - (i.e. Ivy, Jasmine, or Honeysuckle)







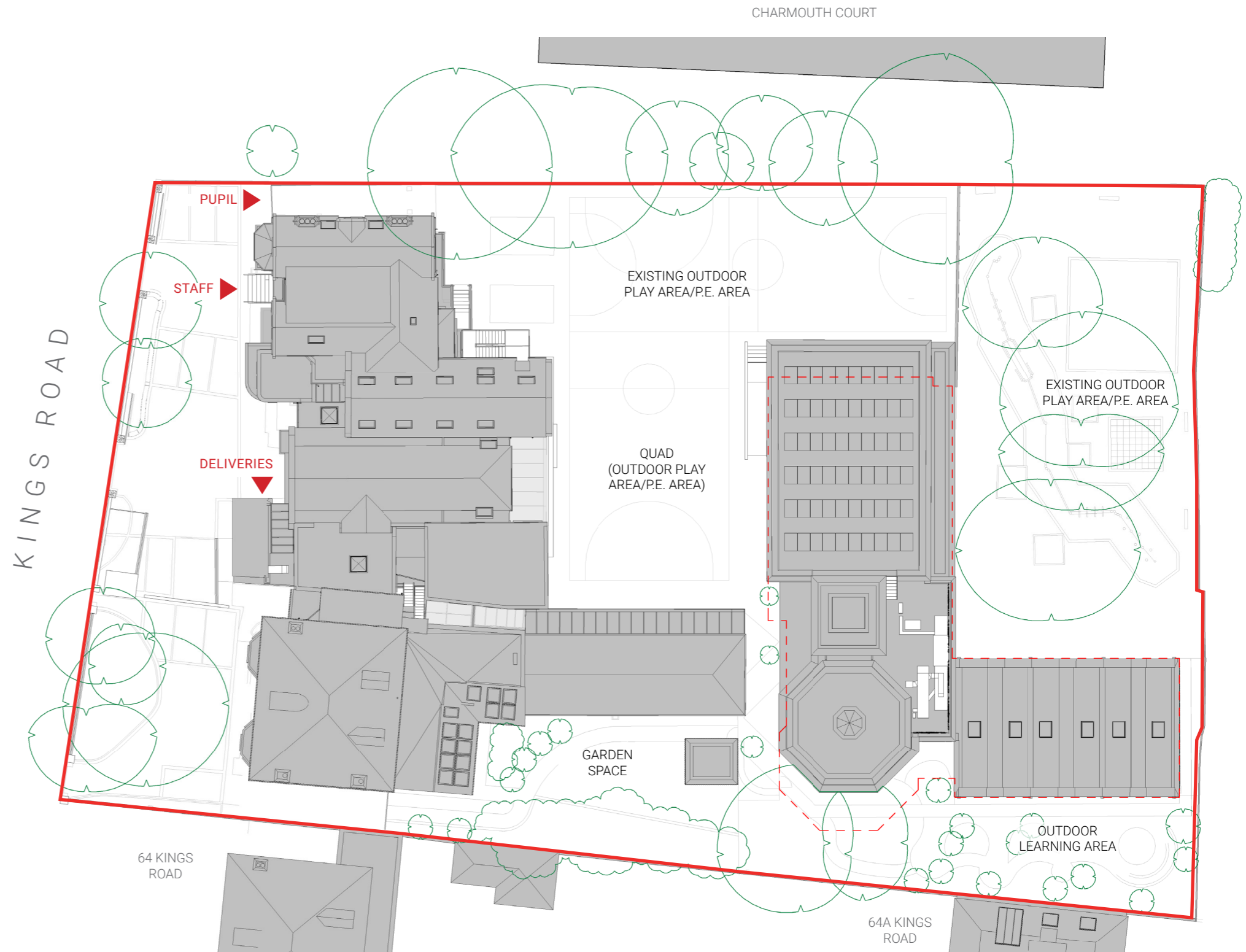
# 11.1 PROPOSED SITE ACCESS & MOVEMENT

## ACCESS



No changes are proposed to how pupils, staff and visitors enter the school. Similarly vehicular access will remain as existing.

Internally a review of accessibility has been carried out and improved where possible. This is discussed on the following pages.

The land locked location of the new build block will mean that emergency access for fire is difficult and therefore a sprinkler tank and pump room have been proposed to protect the building occupants in such an eventuality.



## KEY: SITE ACCESS AND MOVEMENT

-  Main entrance point
-  Site boundary

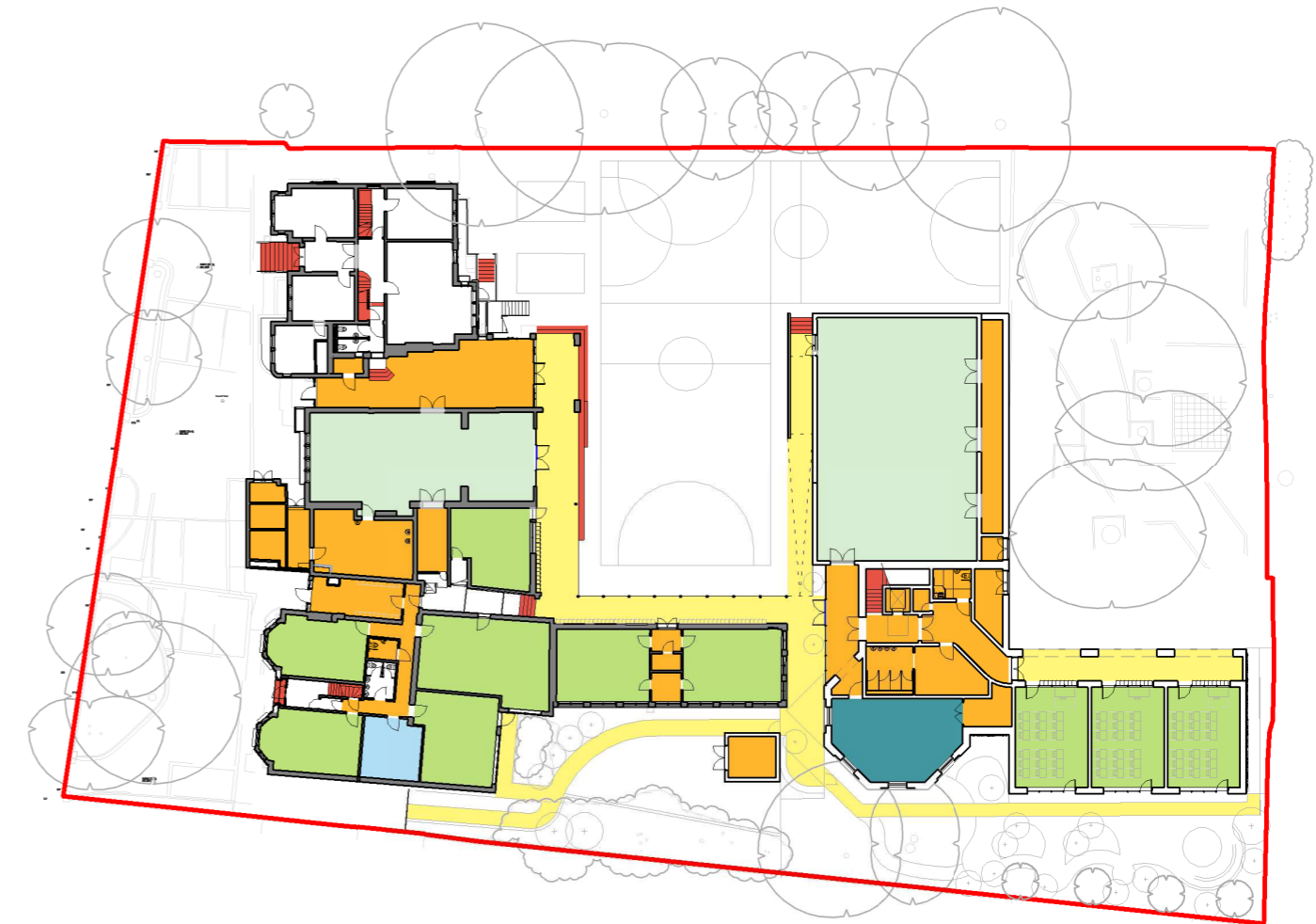
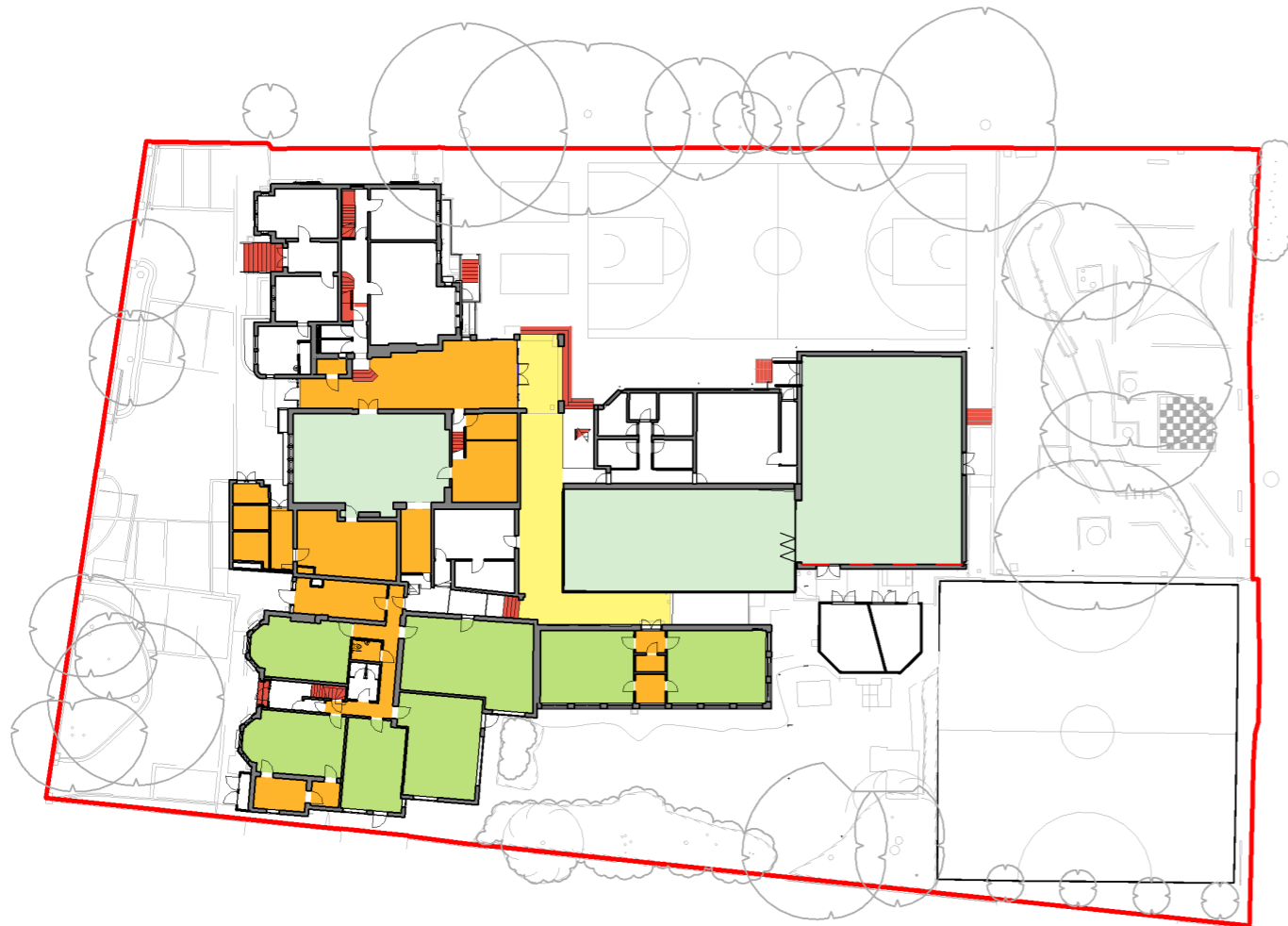
 SITE PLAN - NTS

## ACCESSIBILITY

Internally a review of accessibility has been carried out and improved where possible, this will significantly aid accessibility across the site. In terms of access to education, this will mean the school will have level access to 13 general teaching classrooms and 2 specialist teaching classrooms. This is compared with the existing facilities, where 7 general teaching classrooms have level access.

In addition to this the outdoor P.E. / play space provided in the quad and to the north of the site will now be fully accessible to all from within main school. Currently to get access to playspace, wheelchair users would have to use the pupil entrance gates to the north of the site.

The diagrams below are reflective of where level access is achieved across the site at ground level. All of the facilities provided in the new build block are fully accessible.



EXISTING GROUND FLOOR PLAN NTS

PROPOSED GROUND FLOOR PLAN NTS

### KEY: ACCESSIBILITY DIAGRAMS

- Level access
- Level external access / colonade
- Stepped level change
- Accessible general teaching classrooms
- Accessible learning resource classrooms
- Accessible specialist teaching classrooms
- Accessible large spaces

### CLASSROOMS

- Accessible general teaching classrooms - 7
- Accessible specialist teaching classrooms - 0
- Accessible learning resource spaces - 0

**38% accessible space**

### LEVEL

- Ground Floor
- 
- 

### CLASSROOMS

- Accessible general teaching classrooms - 13
- Accessible specialist teaching classrooms - 2
- Accessible learning resource spaces - 7

**54% accessible space**

### LEVEL

- Ground & First Floor
- Ground & Second Floor
- Ground & First Floor







# 12.1 MINIMISING DISRUPTION

## PHASE 1

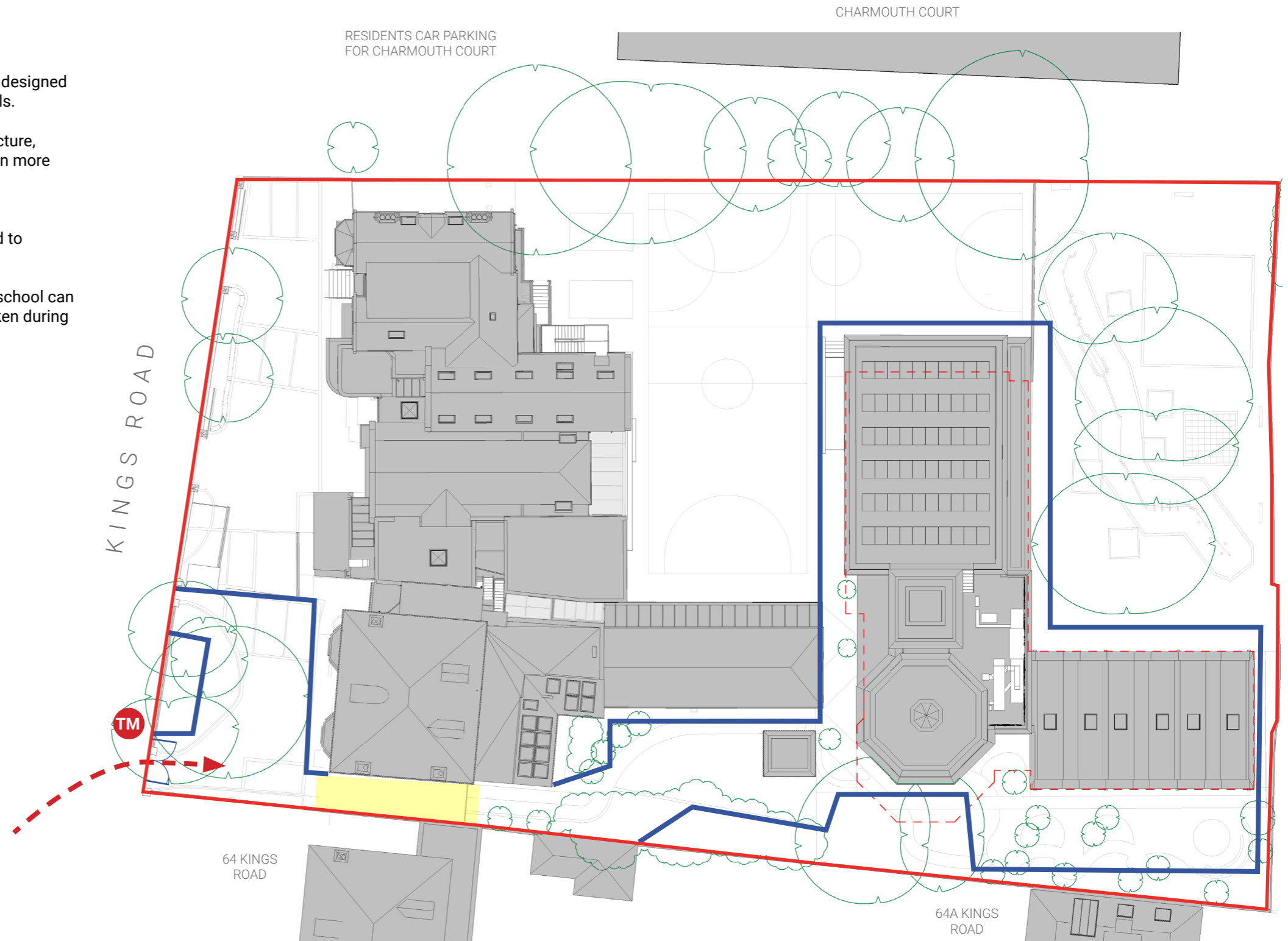
The construction process will be subject to the strict regulations designed to minimise disruption to neighbouring properties, staff and pupils.

The new classroom block is designed as a concrete framed structure, minimising the need for large cranes and making the construction more efficient.

## TRAFFIC

Construction traffic will be appropriately managed and scheduled to minimise disruption to the school and neighbours.

The project will be phased over a number of years to ensure the school can continue to operate as normal. Significant works will be undertaken during summer holidays to minimise traffic disruption.



### KEY: CONSTRUCTION DIAGRAM

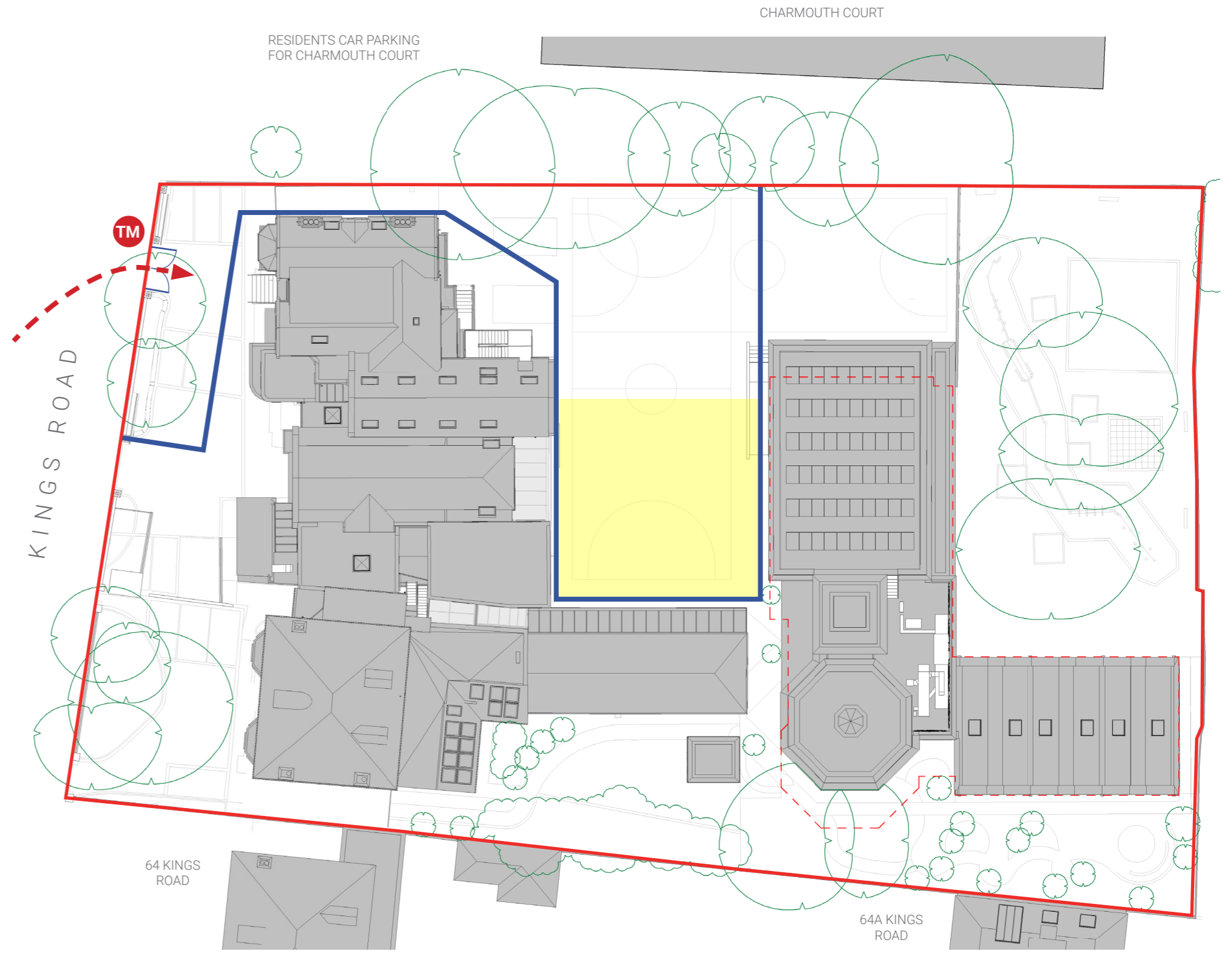
- TM Proposed traffic marshal
- Area of demolition to allow construction access
- - - ➔ Construction traffic
- Proposed hoarding
- Site boundary

SITE PLAN - NTS

# 12.1 MINIMISING DISRUPTION

## PHASE 2

This access strategy is proposed to carry out the demolition works and for resurfacing the outdoor play / PE area. The southern access strategy will be employed for the main construction works.



### KEY: CONSTRUCTION DIAGRAM

- TM Proposed traffic marshal
- Area of demolition to allow construction access
- - - ➔ Construction traffic
- Proposed hoarding
- Site boundary

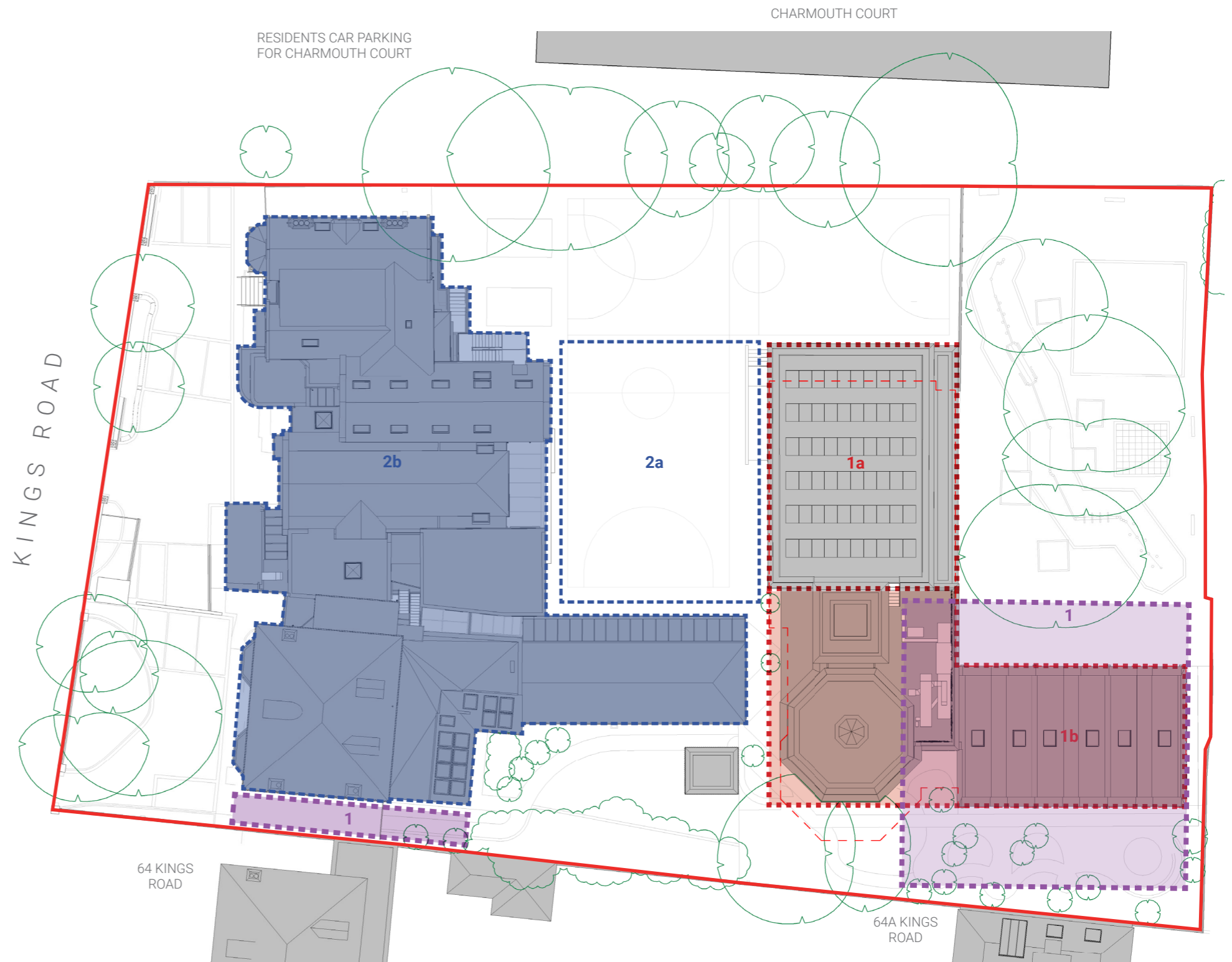
SITE PLAN - NTS



## 12.2 PROJECT PHASING

The project will be phased over a number of years to ensure the school can continue to operate as normal. Significant works will be undertaken during summer holidays to minimise traffic disruption.

- **Phase 1**  
■ **Enabling Works**  
 South side garage and P.E area are demolished to facilitate vehicle access to site and enable construction of new teaching classrooms.
  
- **Phase 1a**  
■ **Hall Refurbishment and Extension**  
 The existing hall roof is replaced and the hall is extended south.
  
- **Phase 1b**  
■ **New Teaching Classrooms**  
 New classrooms will be complete to facilitate decant.
  
- **Phase 2a**  
■ **Circulation Improvement and Decluttering**  
 The low-quality classrooms and gym are demolished, creating a large central quad and allowing for easier navigation around the school.
  
- **Phase 2b**  
■ **Refurbishment and Adaptation of Existing Buildings**  
 The existing library is enlarged, a new classroom is provided and several areas are refreshed. The existing Dining hall is enlarged and opened up to the quad.



⌚ SITE PLAN - NTS