



King's House School

**Music and Classroom
Block Resubmission
Heritage and
Archaeological Statement**

Final report

Prepared by LUC

March 2021

King's House School

Music and Classroom Block Resubmission Heritage and Archaeological Statement

Project Number
11158

Version	Status	Prepared	Checked	Approved	Date
1.	Draft	M. Statton R. Haworth	S. Orr	S. Orr	17.12.2020
2.	Final - incorporating updates prior to submission, addition of executive summary	M. Statton R. Haworth	S. Orr	S. Orr	11.03.2021

Contents

Chapter 1			
Introduction	2	GLHER search 15969 results	B-1
Executive Summary	2		
Project background	2		
Chapter 2	5	Appendix C	C-1
Methodology		Site borehole and trial pit logs	
Introduction	5		
Historic environment guidance	5		
Data	6		
Consultation	7		
Chapter 3	8	Table of Tables	
Baseline		Table 3.1: Historic map regression	10
Site conditions	8	Table A.1: Relevant NPPF (2019) policies	A-2
Archaeological and historical background	9	Table A.2: Relevant planning policy from the London Plan	A-3
Historic map regression	10	Table A.3: Relevant policies from the Richmond Local Plan	A-3
Archaeological potential and survival	11	Table A.4: Relevant policies in the Village Planning Guidance SPD (2016)	A-6
St Matthias Conservation Area	14		
No. 68 Kings Road – Building of Townscape Merit	15	Table of Figures	
No. 66 Kings Road – Building of Townscape Merit	18	Figure 1.1: Site location plan	4
		Figure 3.1: Location of boreholes and trial pits	9
		Figure 3.2: Heritage Asset Location Plan	13
		Figure 3.3: St Matthias Conservation Area (blue) and site location (red)	14
		Figure 4.1: Demolition Plan	21
		Figure 4.2: Site Block Plan	22
Chapter 4	20	Table of Plates	
Assessment of effects		Plate 1: View looking north down Kings Road in St Matthias Conservation Area (from outside No. 64 Kings Road)	15
Potential effects to the St Matthias Conservation Area and the Buildings of Townscape Merit – No. 68 and 66. Kings Road	23	Plate 2: Front elevation of No.68 Kings Road, looking southeast	16
Potential effects to archaeology	23	Plate 3: Front elevation of No. 68 Kings Road with the historic extension to the south, looking northeast.....	16
Discussion and conclusions	23	Plate 4: Partition wall inside the dining hall	16
		Plate 5: Modern extension to the rear of the dining hall	16
		Plate 6: Rear elevation of No. 68 Kings Road, looking west .	17
		Plate 7: Front elevation of No. 68 Kings Road, facing southeast	18
		Plate 8: Rear elevation on No. 66 with modern extensions, facing northwest.....	18
Appendix A	A-1		
Legislation and planning policy			
Legislation	A-1		
Planning policy	A-1		
The London Plan (consolidated with alterations since 2011)	A-2		
Richmond Local Plan	A-3		
Supplementary Planning Guidance	A-5		

Chapter 1

Introduction

Executive Summary

1.1 This Heritage and Archaeological Statement assesses the effect of planning proposals for new music and classroom blocks at King's House School, Richmond upon the historic environment. It takes into account effects on the surrounding conservation area, non-listed buildings of townscape merit and non-designated archaeology. No other designated or non-designated heritage assets are located nearby or affected by the proposals.

1.2 The statement concludes that the proposed development has a neutral effect upon – ie. it does not cause any harm to - the heritage significance of the buildings and the contribution that they make to the conservation area.

1.3 Overall, the proposed development is considered to preserve the character and appearance of the St Matthias Conservation Area and the special character of the Buildings of Townscape Merit.

1.4 With regard to archaeology, the site has low or very low potential for remains ranging from prehistoric and Roman to early medieval or early post-medieval in date. There are known assets of late post-medieval and modern date within the site, but these are likely to be of negligible heritage significance. Any potential and known assets on the site may already have been damaged through past use and development of the site. Archaeological investigation and an appropriate mitigation strategy may be required to address these factors.

Project background

1.5 LUC was commissioned by King's House School to prepare a Heritage and Archaeological Statement to accompany planning proposals for new music and classroom blocks relating to the King's House School (senior department), Richmond, TW10 6ES. The proposals are an amended scheme prepared following the refusal of application 20/0165 on 3 June 2020.

1.6 The proposed development site (Figure 1.1) is approx. 4,500m² and located to the east of Kings Road, which runs through the St Mathias Conservation Area. The site includes two historic buildings – No 68 and No 66 - that are locally listed as Buildings of Townscape Merit (BTM).

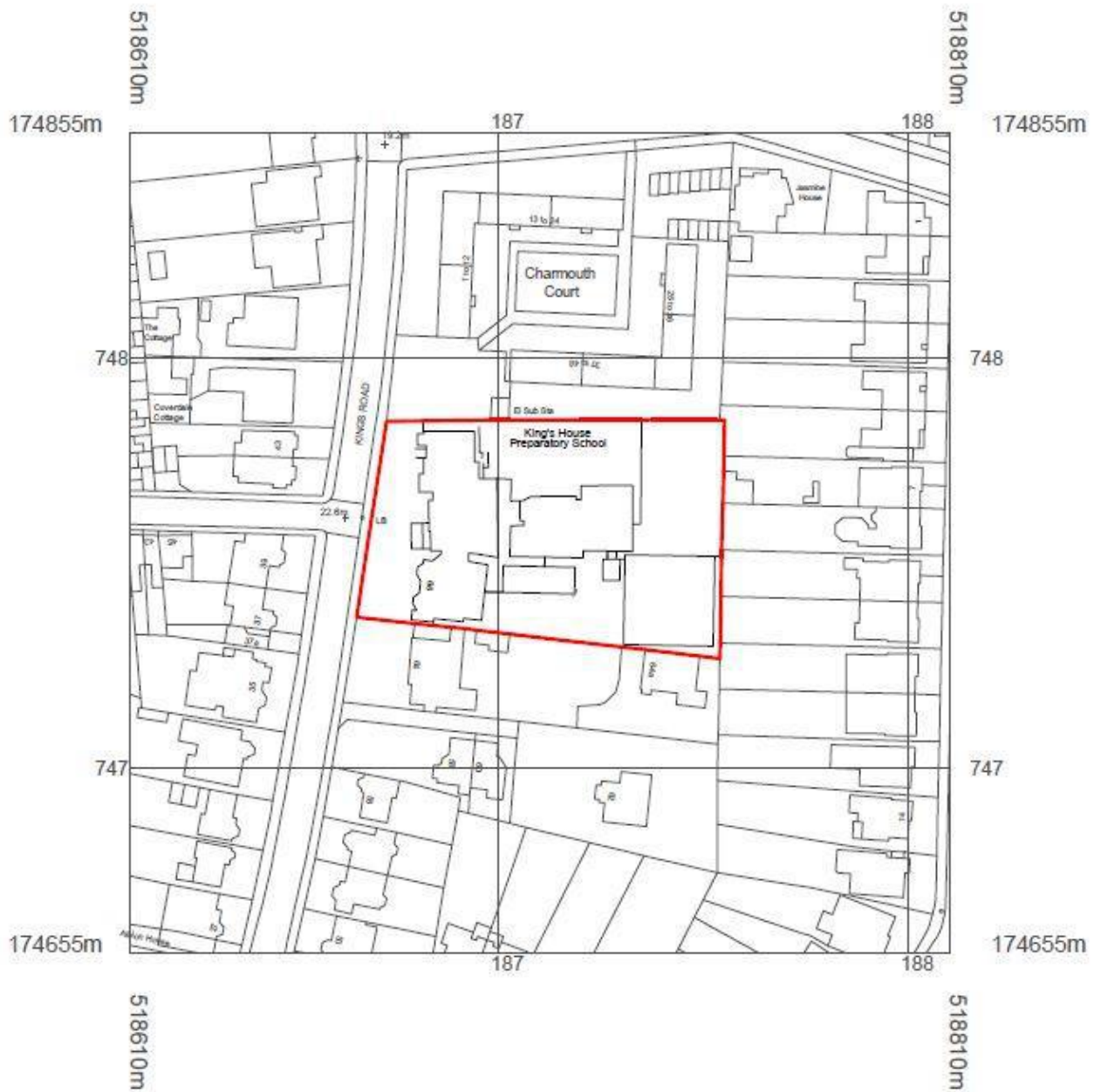
1.7 BTMs are buildings that: “*due to their historical associations, architectural style and visual interest, as well as possibly their siting within an area, are of significance to the history and character of the environment. However, they may not possess enough interest to warrant statutory listing as being of ‘special architectural or historic interest’*”¹ by the Secretary of State of the Department for Digital, Culture, Media and Sport. Although not statutorily listed, their inclusion within the St Matthias Conservation Area affords them a degree of legal protection and the London Borough of Richmond upon Thames (LBRT) seeks to protect the character and setting of BTMs by treating proposals to them as if they were listed buildings (for more information on relevant legal protection and national and local policies refer to Appendix A).

1.8 This heritage statement has therefore been prepared to assess the effect of the development proposals on these two locally listed buildings, as well as the surrounding conservation area.

1.9 There are no designated or non-designated archaeological assets in the Site, nor is it located in a locally designated Archaeological Priority Area (APA). The assessment of archaeological potential has been triggered by the size of the development.

¹ London Borough of Richmond. 2015. *Supplementary Planning Document: Buildings of Townscape Merit*.

Figure 1.1: Site location plan²



² C.f. David Miller Architects Figure KHS-DMA-XX-GF-DR-A-02101

Chapter 2

Methodology

Introduction

2.1 As required by national, regional, and local planning policy (detailed in Appendix A) this heritage statement explains how the historic environment and its component heritage assets may be affected by the proposed development, and how any adverse effects have been avoided, minimised or mitigated.

2.2 The 2019 National Planning Policy Framework (NPPF) glossary defines a heritage asset as: “*A building, monument, site, place, area or landscape identified as having a degree of significance meriting consideration in planning decisions, because of its heritage interest. It includes designated heritage assets and assets identified by the local planning authority (including local listing).*”

Historic environment guidance

2.3 This report has been prepared in accordance with the following historic environment guidance, including:

- Ministry of Housing, Communities & Local Government. 2019. *Planning Practice Guidance (PPG)*.
- Chartered Institute for Archaeologists (CIFA). 2017. *Standard and Guidance for historic environment desk-based assessment*;
- Historic England. 2015. *Managing Significance in Decision-Taking in the Historic Environment: Historic Environment Good Practice Advice in Planning Note 2 (GPA 2)*;
- Historic England. 2017. *The Setting of Heritage Assets: Historic Environment Good Practice Advice in Planning Note 3 (GPA 3)*;
- Historic England. 2019. *Statements of Heritage Significance: Analysing Significance in Heritage Assets*;
- Greater London Archaeological Advisory Service. 2015. *Guidelines for Archaeological Projects in London*; and,
- London Borough of Richmond upon Thames. 2017. *Heritage Statements: Planning*.

Data

Geographical study area

2.2 A 500m study area was established around the site for context and heritage asset identification, in accordance with Greater London Historic Environment Record (GLHER) guidance for study areas in Greater London³.

2.4 Supporting data and information was collected and collated for the study area. In line with best practice, the following publicly accessible sources of primary and secondary information were used in preparation of this report:

- Information on designated heritage assets from the National Heritage List for England (NHLE);
- Information on locally listed assets and conservation areas available on the LBRC website;
- Information on non-designated assets recorded in the GLHER database (GLHER search reference 15969 – for information obtained refer to Appendix B). This search identified no further non-designated built heritage assets to consider within the heritage assessment;
- Cartographic Sources – historic and modern Ordnance Survey mapping at various scales;
- British Geological Survey (BGS) Geological mapping⁴;
- Archival, published and online sources;
- Legislation and planning documents; and,
- Architect's plans.

Site Visit

2.5 The site and environs were visited on October 23 2019 in relation to the previous planning submission. Additional visits were not considered necessary as the team has a good understanding of the site and its context, and no material changes to the context or the extent of heritage assets have taken place in the intervening period.

2.6 No archaeological features were observed on site. A full digital photographic record was made of this visit and selected photographs are included within this report.

Desk-based assessment

2.7 The heritage statement identifies the significance of heritage assets within the application site and its environs, assesses the likely impact of the proposed development upon

assets and provides recommendations for any appropriate mitigation strategies.

2.8 Significance is articulated in accordance with the Historic England (2008) guidance document *Conservation Principles, Policies and Guidance for the Sustainable Management of the Historic Environment*, which sets out four key values:

- **evidential value** - deriving from the potential of a place to yield evidence about past human activity;
- **historical value** - deriving from the ways in which past people, events and aspects of life can be connected through a place to the present. This is typically either illustrative or associative;
- **aesthetic value** – deriving from the ways in which people draw sensory and intellectual stimulation from a place. This includes architectural and artistic interest; and
- **communal value** - deriving from the meanings of a place for the people who relate to it, or for whom it figures in their collective experience or memory.

2.9 These categories help assess the type of significance an asset may possess, but not the level of that significance. For that, professional judgment has been employed alongside use of the listing and scheduling criteria for assets of national significance, where appropriate. Assets may derive their significance from one or more of the above values, but a lack of interest in one or more of these areas does not indicate a lower level of heritage significance, just that their interest lies elsewhere.

2.10 The contribution that setting makes to a heritage asset's significance has also been considered as per Historic England's (2017) GPA3 guidance. The NPPF defines setting as: "*The surroundings in which a heritage asset is experienced. Its extent is not fixed and may change as the asset and its surroundings evolve. Elements of a setting may make a positive or negative contribution to the significance of an asset, may affect the ability to appreciate that significance or may be neutral.*"

2.11 Archaeological potential has been considered in relation to the pattern and significance of known assets (drawn from the GLHER and review of historic mapping and available digital aerial imagery) in the vicinity and site land use history to understand level of potential and likely effects.

2.12 Impacts are described in terms of the extent to which the proposed development will degrade or enhance the assets' significance.

³ <https://historicengland.org.uk/services-skills/our-planning-services/greater-london-archaeology-advisory-service/greater-london-historic-environment-record/>

⁴ Made available by <http://mapapps.bgs.ac.uk/geologyofbritain/home.html>.

Assumptions and Limitations

2.13 Assessments are policy neutral and make no assumptions with regard to the application of local or national policy, as it is for the decision-maker to understand the likely level of harm to heritage assets and balance this accordingly. (Where there are interactions with other legislative regimes – e.g. the need for scheduled monument consent – this is highlighted.)

2.14 The study has utilised a range of sources on the area's historic environment. Much of this is necessarily secondary information compiled from a variety of sources (e.g. GLHER data and grey literature reports). It has been assumed that this information is reasonably accurate unless otherwise stated.

Consultation

Built heritage

2.15 The Applicant has undertaken extensive consultation with LBRT in relation to the design of the proposed scheme. This process is fully documented in the Design and Access Statement⁵, whereas herein only information pertinent to built heritage issues is summarised.

⁵ David Miller, 2020. King's House School Design and Access Statement revision P1

Chapter 3

Baseline

Site conditions

Location

3.1 The site is in Richmond, London, on the eastern side of Kings Road, opposite the junction with Audley Road. It is centred on national grid reference (NGR) 518702, 174758. It is located approximately 900m east of the River Thames.

Description

3.2 The proposed development site measures 4,500m² and includes two locally listed Buildings of Townscape Merit (BTM): No. 66 and No. 68 Kings Road. As a result of their conversion to a school, both buildings have been conjoined as well as extended, largely to the rear.

3.3 In addition to modern extensions, the rear gardens now include two surfaced sports pitches – one directly to the rear of No. 68 and the other at the far end of the former garden of No. 66. Between the two pitches is a children's play area, with a synthetic surface, and a number of mature trees. The only remaining area of undeveloped garden is directly to the rear of no 66.

3.4 To the front, the two gardens have been surfaced over and converted to hard-standing.

Topography

3.5 Topographical information can help in understanding the suitability of an area for settlement and therefore the potential for its past occupation.

3.6 The parish of Richmond lies on the southern bank of the River Thames, 16 miles from London Bridge. The greater part of the parish is low lying at approx. 15m above ordnance datum (AOD), but the ground rises to 30m AOD on the summit of Richmond Hill, which lies adjacent to the River Thames.

3.7 Kings Road gradually rises north to south, on the northern side of Richmond Hill. In addition to being sited on this slope, the site is multi-levelled with the main proposed building area at 2.90m AOD.

Geology

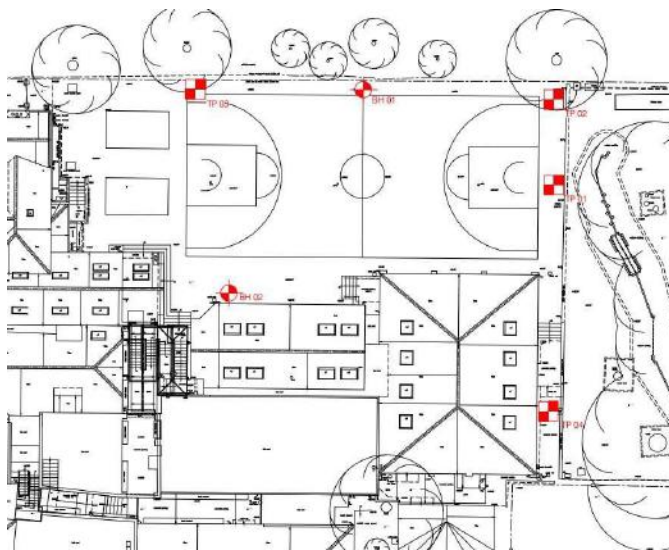
3.8 Archaeological features are often cut into the surface of the natural geology, with later features potentially present

within the overlying deposits. Understanding a site's geology, and whether the ground levels have been built up or truncated, can therefore aid in determining the potential for archaeological survival, as well as the levels at which archaeology is likely to be encountered.

3.9 The British Geological Survey Geology of Britain viewer⁶ indicates that the solid geology of the Site is London Clay Formation - Clay, Silt and Sand. This sedimentary bedrock was formed approximately 48 to 56 million years ago in the Palaeogene Period when the local environment was dominated by deep seas.

3.10 No superficial deposits are recorded by the BGS, but ground investigations comprising boreholes and trial pits have recently been undertaken in the site (Figure 3.1). The full borehole log report is included in Appendix C, but in summary these revealed deposits of made ground up to 1.10m thick, overlying a sequence of Taplow river terrace sands and gravels up to 5.70m thick⁷.

Figure 3.1: Location of boreholes and trial pits⁸



3.11 The latest made ground deposits – those recorded at the top of the borehole – are very clearly artificial in origin (modern inclusions e.g. paving, tarmac, concrete). However, the earlier ones are less evident as such, being described variously as sandy, gravelly, clayey deposits, often with rooting and no man-made material present. This distinction is important, as typically where made ground directly overlies the natural gravels it is indicative of the overlying deposit – e.g. the natural sand over clay and loam - having been removed and

the top of the gravels potentially truncated. In the site, this could have occurred as a result of development. If such truncation has taken place, then any archaeological deposits present within the site (if any) would also have been damaged or removed. However, given the description of the lower made ground deposits truncation is by no means certain. It is also possible that these deposits are natural, albeit somewhat disturbed as a result of rooting action and gardening.

3.12 In either scenario, the BGS⁹ records that the Taplow deposits are typically 5-9m thick suggesting that those on the site may be intact enough to still have some archaeological potential, even if the levels above have been disturbed/ removed.

3.13 The Taplow gravel deposits were formed approximately 2 million years ago by a braided River Thames, which underwent successive downcutting associated with changes in relative sea level¹⁰. Further east, up Richmond Hill, the BGS records a deposit of Boyn Hill gravels. These are older than the Taplow gravels, indicating that the lower area of the site retained a fluvial environment for longer and, as such, would have a slightly lower potential for evidence of early prehistoric activity.

3.14 Palaeolithic tools – generally handaxes and Levallois flakes – have been recovered from this gravel terrace but typically in a rolled condition, suggesting that they are derived from the earlier Lynch Hill gravel deposits¹¹.

3.15 Where the Taplow gravels are evident in north London they are overlain by a natural deposit of brickearth – a fine-grained wind-borne sediment (periglacial loess) used in brick making. It is at the intersection of these two deposits archaeological features and finds are encountered. However, in Richmond the Taplow gravels appear to be overlain by very acid sand over clay and loam¹² and it is due to the poor quality of these soils that the lowland heath habitats (e.g. of Richmond Park) now predominate.

Archaeological and historical background

Prehistoric (500,000 BC- AD43)

3.16 Numerous prehistoric artefacts have been found in and along the River Thames at Richmond, attesting to the exploitation of the river by hunter-gatherers¹³. Most of these are Palaeolithic and Neolithic worked flints that have been recorded to the northeast of the site, near Richmond Green.

⁶ <http://mapapps.bgs.ac.uk/geologyofbritain/home.html> [accessed 11.11.2019]

⁷ Site Analytical Services Ltd. 2019. King's House School, Richmond, London TW10 6ES: report on ground investigation

⁸ Image c.f. Site Analytical Services Ltd. 2019. King's House School, Richmond, London TW10 6ES: report on ground investigation., p. 8.

⁹ <https://www.bgs.ac.uk/lexicon/lexicon.cfm?pub=TPGR> [accessed 11.11.2019]

¹⁰ MoLA 2000. The Archaeology of Greater London, p. 15

¹¹ MoLA 2000. The Archaeology of Greater London, p. 15 and 36

¹² MoLA 2000. The Archaeology of Greater London, p. 17

¹³ PCA. 2012. 4 Spring Terrace, London Borough of Richmond: Archaeological Watching Brief.

3.17 A small number of prehistoric finds are also recorded along Richmond Hill to the west of the site. Finds here include a Palaeolithic (800,000 – 10,000 BC) worked flint (MLO9174; Figure 3.2), from within the study area.

3.18 There is also some evidence for later prehistoric settlement around Richmond Hill¹⁴ and in Richmond Park, with two possible Bronze Age (2000–600 BC) barrows reported in the latter location¹⁵. Sherds of Iron Age (600BC – 43AD) pottery have also been recovered from Richmond Park¹⁶.

Roman (AD43 – 410)

3.19 During the Roman period the site would have lain in the rural hinterland of *Londinium*, as evidenced by the discovery of two farmsteads in Twickenham¹⁷. However, in the Richmond area evidence is limited to finds, including a possible coin hoard (MLO19111; Figure 3.2) in Denbigh Gardens, to the northeast of the site.

Early medieval (AD410 – 1066), medieval (1066 – 1540) and post-medieval (1540- 1901)

3.20 At the time of the Domesday Survey, Richmond was formed part of the neighbouring manor of Kingston¹⁸. It only came to form a separate entity in the reign of Henry I (c. 1068 – 1135), and at that time was known as the manor of Sheen¹⁹. In the 14th century Sheen passed to King Edward II and was subsequently developed as Sheene Palace. This palace was destroyed by Richard II, and a new one was constructed by Henry V and his son.

3.21 The second Sheen Palace burnt down in 1497 and was rebuilt by Henry VII, who, in 1501, ordered that the name of the manor be changed from Sheen to Richmond, after his earldom of Richmond in Yorkshire. Richmond Palace was partially demolished following the death of Charles I (1649) and after a brief period of royal use following the reinstatement of the monarchy, the remains were leased out²⁰. The two deer parks associated with these palaces – the original Old Deer Park and the 17th century Richmond Park – survive to the north and south of Richmond, respectively.

3.22 The original hamlet of Richmond, or Sheen, lay to the northeast of the royal palace and Old Deer Park between the river and the green. This area has subsequently been locally

designated as an Archaeological Priority Area (APA) due to the potential for remains associated with the palaces and associated settlement, potentially from the early medieval period onwards. The site lies approximately 390m to the southeast of this area, in its rural hinterland.

3.23 The present town of Richmond has grown up for the most part to the south of the royal palace. This expansion reflected Richmond’s status as a fashionable address following the establishment of the Richmond Wells Spa and entertainment centre in the early 18th century²¹.

3.24 This development took place on Richmond Hill adjacent to the River Thames and today the area is characterised by the exceptional quality of its 18th century architecture and its distinctive groups of fine later Regency and Victorian housing.

3.25 The area remained largely rural until the mid-19th century when the arrival of the railway led to substantial expansion. It is was during this period that the site was developed and the two historic buildings (discussed in more detail below) were built. They are representative examples of the types of Victorian villas which exemplify the character of this late 19th century expansion.

Historic map regression

3.26 The historic map regression confirms that the site was undeveloped agricultural land during the post-medieval period. It was developed in the late 19th century with the erection of the two villas that remain today. Following the initial extension of No.68 at the end of the 19th century, there has been a series of extensions and additional outbuildings, primarily to the rear of the two BTMs. A summary of the site’s development as indicated by historic maps is provided in the table below.

Table 3.1: Historic map regression

Map	Site description
John Rocque’s 1761 Survey of London ²²	The site lies within an enclosed field depicted as pasture.

¹⁴ London Borough of Richmond upon Thames. 2000. Richmond Hill Conservation Area Study, p. 3.

¹⁵ MOLA 2000. The Archaeology of Greater London, p. 98.

¹⁶ https://www.heritagegateway.org.uk/Gateway/Results_Single.aspx?resourceID=272&uid=2838968

¹⁷ https://www.heritagegateway.org.uk/Gateway/Results_Single.aspx?resourceID=272&uid=2815033; and https://www.heritagegateway.org.uk/Gateway/Results_Single.aspx?resourceID=272&uid=2817377

¹⁸ ‘Parishes: Richmond (anciently Sheen)’, in A History of the County of Surrey: Volume 3, ed. H E Malden (London, 1911), pp. 533-546. British History Online <http://www.british-history.ac.uk/vch/surrey/vol3/pp533-546> [accessed 31 October 2019].

¹⁹ Ibid.

²⁰ https://www.richmond.gov.uk/media/6334/local_history_richmond_palace.pdf

²¹ ‘Parishes: Richmond (anciently Sheen)’, in A History of the County of Surrey: Volume 3, ed. H E Malden (London, 1911), pp. 533-546. British History Online <http://www.british-history.ac.uk/vch/surrey/vol3/pp533-546> [accessed 31 October 2019].

²² Available to view online at: http://biblio.unibe.ch/web-apps/maps/zoomify.php?pic=Ryh_1813_19.jpg&col=rvh

Map	Site description
Thomas Richardson's 1771 Map of the Royal Manor of Richmond ²³	The site is depicted within a strip field.
Richmond Tithe Map 1851 ²⁴	The site lies in plot 44; an area of meadow.
1871 OS Town Plan 1:1, 056 ²⁵	Although not named, Kings Road is depicted; the site remains undeveloped.
1895 OS Town Pan 1:1, 056 ²⁶	The site is shown to be occupied by the two locally listed buildings that are still present. There is a small L-shaped building in the northeast corner of the rear garden to no. 66.
1898 OS Surrey County Series 1:2, 500 ²⁷	No change.
1913 OS Surrey County Series 1:2, 500 ²⁸	An extension – the current school dining hall – is shown to the south of no. 68. There is also a glass extension to the south of no. 66 and a glasshouse adjacent to the northern boundary of the rear garden, just west of the L-shaped building.
1936 OS Surrey County Series 1:2, 500 ²⁹	No change.
1960 OS Plan 1:1, 250	There is a small rectangular building shown in the front garden of No. 68, adjacent to the southern boundary with No. 66. Another is shown along the same boundary towards the southeast corner of the rear garden. There is a second extension shown to the south of No. 66; this is likely to be the current garage.
1991 OS Plan 1:1, 250	No. 66 and No. 68 are still separate. The building to the front of No. 68 remains and No.68 itself has had its original extension to the rear. In the rear garden the building in the southeast corner has gone, but there are two new ones: one sits along the southern boundary again, just behind the new rear extension, whilst the other is close to the northern boundary in the area that is now a sports pitch. No.66 has also been extended to the rear. The buildings in the rear garden are no longer present.

3.27 The Bomb Sight website³⁰ which maps the World War II bomb census between October 7th, 1940 and June 6th 1941 was also reviewed. This indicated no known strikes on the site, although several are recorded in its immediate vicinity.

Archaeological potential and survival

Archaeological potential

3.28 There is a lack of known archaeology in or in the immediate vicinity of the site. The only archaeological evidence recorded by the GLHER within the study area is two findspots – prehistoric and Roman – and the APA at Richmond Green (Figure 3.2). This absence of recorded archaeology is not evidence of nonexistence but owes to the historic nature of the surviving built landscape and the lack of opportunities for investigation. This introduces an additional element of uncertainty into the following assessment of archaeological potential and increases the risk of encountering unexpected remains.

3.29 Prehistoric activity is attested in the wider area, primarily along the river, but also potentially in Richmond Park to the south of the site. Much of this activity would have been transient leaving little in-situ archaeology, but the presence of potential burial mounds is indicative of some settlement during the Bronze Age. On current evidence, **the potential for significant prehistoric remains is considered to be low**; however, the absence of evidence is not the same as evidence of absence.

3.30 During the Roman period the site and study area is likely to have been agricultural land interspersed with small rural holdings; the poor acidic soils of the area³¹ making the likelihood of villas low. The **potential for encountering significant Roman remains is considered to be low**.

3.31 Any early medieval settlement is most likely to be found in the area of the later medieval hamlet at Richmond – or Sheen – Green; the area that is now an APA. At this time the site was most likely agricultural land, or else formed an extension of the commons from which the two Royal Parks were formed (most likely the latter). As such, the **potential for significant remains dating to the early medieval and medieval period is considered very low**.

3.32 The site is **unlikely to contain any significant archaeology relating to the post-medieval period** given its known agricultural use at this time. Some remains relate to the use of the site as a garden may be evident, namely the late post-medieval and modern out-buildings identified in the front

²³ Available to view in the RBLT. 1994. *St Matthias and Sheen Road Conservation Area Study*.

²⁴ Viewed online at the <https://www.thegenealogist.co.uk/>

²⁵ Available to view online at: <https://www.old-maps.co.uk/#/>

²⁶ Available to view online at: <https://www.old-maps.co.uk/#/>

²⁷ Available to view online at: <https://www.old-maps.co.uk/#/>

²⁸ Available to view online at: <https://www.old-maps.co.uk/#/>

²⁹ Available to view online at: <https://www.old-maps.co.uk/#/>

³⁰ <http://bombsight.org/#17/51.45945/-0.29686> [accessed 11.11.2019]

³¹ MoLA. 2000. *The archaeology of Greater London*. P. 17

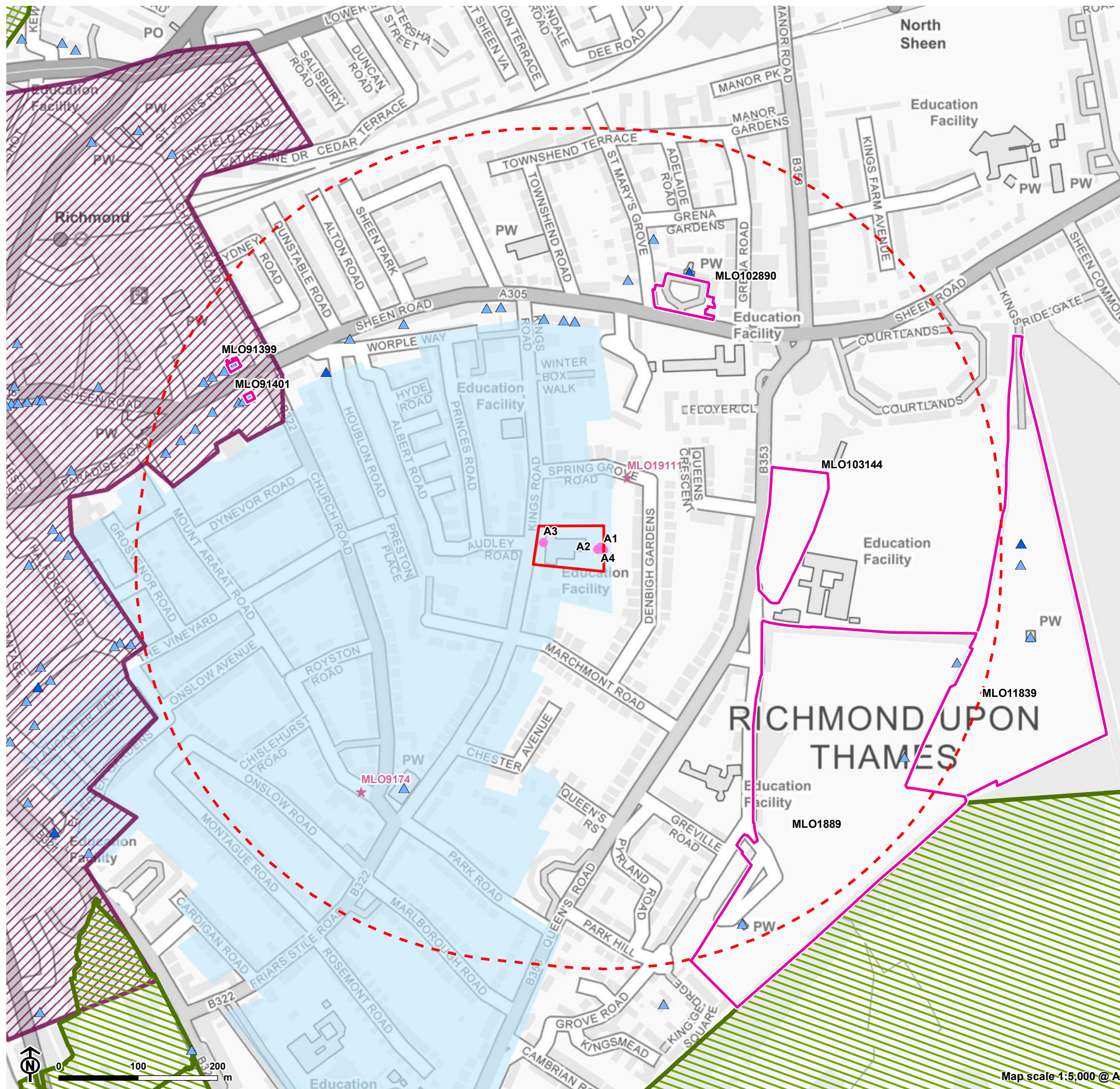
Chapter 3

Baseline

Music and Classroom Block Resubmission
March 2021

and rear gardens of No. 68 and No. 66; however, these buildings are likely to be glasshouses and sheds, of very low – even negligible – evidential value.

Figure 3.2: Heritage Asset Location Plan



- Site boundary
- Study area (500m)
- Nationally Designated Heritage Assets**
- Listed Building
 - ▲ Grade I
 - ▲ Grade II*
 - ▲ Grade II
- Registered Park and Garden
- Locally Designated Heritage Assets**
- St Matthias Conservation Area
- Richmond Green Archaeological Priority Area
- Non-designated Heritage Assets**
- ★ Non-designated HER findspot
- Historic map asset
- Non-designated HER asset

Archaeological survival

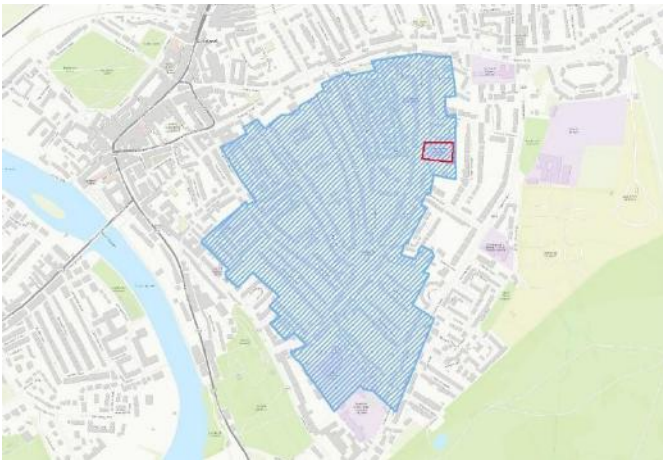
3.33 Although the site was agricultural land prior to development, it appears to have been primarily pasture suggesting that plough disturbance would be minimal. Subsequent gardening activity may have caused some disturbance, especially rooting action by the more mature trees present within the site.

3.34 The built development within the site will also have caused some damage and truncation to any archaeological deposits that may be present, particularly the basement levels of No. 68. However, the buildings on the site that are due to be removed do not have basement levels and, given that the superficial deposits on the site are likely to be deep, there is the potential for archaeology to survive beneath and between them.

St Matthias Conservation Area

Description

Figure 3.3: St Matthias Conservation Area (blue) and site location (red)



3.35 St Matthias Conservation Area lies on the plateau and northern scarp of Richmond Hill. It is bound by Sheen Road to the north, Queen's Road to the east and south, and Richmond Hill to the west. The church of St Matthias – a key landmark, designed by renowned architect George Gilbert Scott – was consecrated in 1858. Early residential development took place around Friars Stile Road, Park Road, Marlborough Road, Rosemont Road and Cardigan Road, with development following the former field divisions of the area, due to the manner in which the land was sold³². The new development

included a mix of mid- and late-Victorian building styles ranging from three-storey villas to smaller terraced cottages, but all consistently high-quality³³.

Character and special interest

Built environment

3.36 It is this diversity of high-quality architecture – unified in date – that forms the special interest of the conservation area and is the reason for its designation in 1977³⁴. The properties on Church Road, Mount Ararat and Kings Road were developed between the 1860s and 1880s and are often large, three-storey detached and semi-detached dwellings. Most properties are in excellent condition, maintaining much of their original Victorian or Edwardian features. In the Kings Road area such features include: brick or rendered boundary walls and gate piers; pitched or hipped roofs with a variety of gable forms, finished in slate or red clay tiles; yellow and red brickwork with pale stone or white painted detailing to string courses, quoins, door and window surrounds; and open basements.

3.37 Most of the buildings in Kings Road retain their original, residential use and are only occasionally interrupted by conversion to alternative use, such as schools. Typically, the buildings in the conservation area are set back from the road and retain their front gardens³⁵ (Figure 3.2).

3.38 The regular, regimented character of much of the development in the conservation area breaks down slightly at its eastern edge, formed by the rear property boundaries of the east side of Kings Road. This is partly as a result of its historical form and development, where the properties in this section were formed from larger and slightly more irregular plots than those to the west and south, backing on to Pesthouse Common. These larger and deeper plots became opportunities for insertion, replacement and densification of development in a desirable area as the borough's population grew through the post-war period and demand increased for additional residential provision and amenities to serve it. As a result this part of the area, particularly east of Kings Road between Marchmont Road and Sheen Road, has had its grain altered by insertion of a variety of backland development, both pre- and post-dating the conservation area designation in 1977. This consists of infill dwellings; replacement of historic villas with larger-footprint flatted blocks such as Charmouth Court; and ancillary development behind school buildings, including King's House School.

³² London Borough of Richmond upon Thames.1994. *St Matthias and Sheen Road Study*, conservation area nos. 30. and 31,

³³ London Borough of Richmond upon Thames. No date, *Conservation Area Statement: St Matthias Conservation Area* 30, p. 1.

³⁴ London Borough of Richmond upon Thames.1994. *St Matthias and Sheen Road Study*, conservation area nos. 30. and 31,

³⁵ London Borough of Richmond upon Thames. 2016. *Richmond and Richmond Hill Village Planning Guidance* P.40

3.39 The overall effect on the area's character is that the experience of the formal, front elevations, streetscape and gardens of Kings Road retains a high level of its historic and architectural character when viewed from the public realm. The historic grain, density and character of the rear portions of the plots has been diluted but the effect of this on the overall character of the conservation area is minimised because the frontage buildings are relatively tall and closely spaced, allowing only glimpse views of the gardens behind.

Trees and landscaping

3.40 Trees are, in general, a formative part of the character of most conservation areas, recognised through the protective controls applied to trees in conservation areas in primary legislation³⁶.

3.41 The rear gardens of Cardigan, Montague, Park, Marlborough and Queen's Roads are identified in the conservation area statement as making a particular contribution to character of the area through the provision of trees, greenery and a sense of spaciousness³⁷. Those of other parts of the conservation area including Kings Road are not specifically mentioned.

3.42 However, as a predominantly residential street with substantial front and rear gardens, trees and planting clearly play a strong visual role in the character of this part of the conservation area, as well as having clear ecological and biodiversity value. In visual terms, a zone of hedges, shrubs and trees forms a semi-permeable zone between front boundary walls and the front elevations of houses, partially screening them and aiding the division between public and private space. Their concentrated effect in linear views along the street is particularly strong (see Plate 1). Tall, mature trees to the rear can be perceived above the roofline and between buildings, creating a distinctive silhouette. Their collective effect adds to the understanding of the area as a mature, landscaped suburb.

3.43 A number of mature trees in the grounds of King's House School are considered to make a particularly positive contribution to the character of the site. Those to the rear have some visual contribution to the wider streetscape through glimpse views between buildings, and from surrounding internal spaces and gardens.

Plate 1: View looking north down Kings Road in St Matthias Conservation Area (from outside No. 64 Kings Road)



No. 68 Kings Road – Building of Townscape Merit

Description

3.44 No. 68 Kings Road is a three-storey red brick building built in gothic revival style (Plate 2 and 3). It features an asymmetric double gable roof that is characteristically steeply-sloped and clad in red tiles. To the left hand-side are two large chimney stacks of revival Tudor influence and a gablet. A flight of stone steps with ornate metal rails lead to a central entrance door at the raised ground floor level. To the left of this is a rectangular bay window above which is a five-sided cantered bay. All windows are shoulder-arched and most of those to the front have stone mullions and transoms. Architectural detailing includes stone window lintels, often featuring blind arches above. These and the four stringcourses feature polychromatic brickwork.

³⁶ Town and Country Planning Act 1990, s.211.

³⁷ London Borough of Richmond upon Thames. No date, Conservation Area Statement: St Matthias Conservation Area 30, p. 1.

Chapter 3

Baseline

Music and Classroom Block Resubmission
March 2021

Plate 2: Front elevation of No.68 Kings Road, looking southeast



Plate 3: Front elevation of No. 68 Kings Road with the historic extension to the south, looking northeast



3.45 Like the main house, this historic extension is of red brick with a gable-end roof featuring a gablet to the east side. Its windows are also of stone and shoulder-arched, however, whilst the historic plan indicates that the front and rear windows were to be rectangular bays, only the rear appears to have been built as such. This wall – depicted on later 1946 plans as housing a platform (Richmond Archive ref: PLA/05004³⁸) – has been lost as a result of the later extension of the hall to the rear. A partition wall (Plate 4) now separates the hall from a modern extension with a mezzanine floor that

is used for storage/ offices (Plate 5). A chimney shown on the plans also appears to have been lost as a result of later alterations, although the fireplace survives.

Plate 4: Partition wall inside the dining hall



Plate 5: Modern extension to the rear of the dining hall



3.46 Historic building plans from Richmond archive (ref: PLA/PLA05012³⁹) indicate the No. 68 originally functioned as the vicarage to the Holy Trinity Church built in 1870 on Sheen Road, at the northern end of Kings Road; a cross motif repeated in various architectural features possibly reflects this religious connection. The quality of the building is in-keeping with surrounding domestic buildings, but its idiosyncratic detailing and styling set it apart from its contemporaries and make it more visually distinctive.

3.47 The archival plans – prepared for the Reverend H. C. S. Quires and dated 1895 – are for a single-storey hall extension

³⁸ The plans cannot be reproduced due to copyright but can be found online at: <https://richmond.spydus.co.uk/cgi-bin/spydus.exe/ENQ/OPAC/ARCENQ?RNI=73559>

³⁹ The plans could not be reproduced due to copyright but can be found online at: <https://richmond.spydus.co.uk/cgi-bin/spydus.exe/ENQ/OPAC/ARCENQ?RNI=77117>

Chapter 3

Baseline

Music and Classroom Block Resubmission
March 2021

to the south of the vicarage. The local archive holds two sets of plans for the extension, neither of which may be reproduced due to copyright restrictions. The initial designs by Humpherys Ltd were superseded by designs by Frank J. Brewer, an architect responsible for several buildings in the local area, including others in the St. Mathias Conservation Area. Brewer was also a surveyor who produced maps of Richmond in the late 19th century.

Plate 6: Rear elevation of No. 68 Kings Road, looking west



3.48 The archive holds further plans dated to 1946 showing the proposed conversion of the vicarage to a school. These plans prepared by J. Douglas Matthews Partners were submitted by R. W. Pathull⁴⁰. They cannot be reproduced due to copyright but show that no further additions or alterations had been made in the intervening years. However, in the subsequent years, particularly in the last 25, many changes have occurred. These include, but are not limited to:

- Erection of single-storey extension to school gymnasium to provide entrance lobby and storeroom (1972);
- An extension between the double-gabled roof of the main building and erection of a single-storey front and side extension to provide an entrance hall and secretary's room (1975);
- An extension to the front of the link corridor between the main 3-storey building and the historic single storey extension (date unknown);
- A double-storey extension between No. 68 and No. 66 (1983);

- A three-storey extension between the original three-storey and the historic single-storey extension (c. 1991);
- Two-storey extension to the dining room (2014);
- Various internal alterations; and,
- Various additions in the rear garden and use of the front garden for car parking.

Heritage significance

3.49 The heritage significance of the building is derived primarily from its architectural quality (aesthetic value) and historic illustrative value as an example of a high-status domestic, gothic-revival building. These values are integral to the special architectural and historic interest of the St Matthias Conservation Area, as recognised by the building's local designation as a BTM.

3.50 In addition to its architectural and historical illustrative value, the building also has some communal value, given its use as a school for over 60 years. It also has some historical associative value, as it was at least in part designed by a locally important architect. Further historic associative value is derived from the public profile of some pupils who attended it, including Lawrence Dallaglio (former England rugby captain) and Zac Goldsmith (Conservative MP for Richmond).

3.51 Most of the additions – particularly the early ones to the front and roof of the building – are of poor quality and obscure parts of the main (west) façade. The additions to the rear, which conjoin No. 68 to No. 66, similarly conceal parts of the historic building and its architectural details. This reduces its legibility, particularly the connection and phasing between the original vicarage and the historic extension. As such, they are detrimental to its architectural value and in turn, to the conservation area.

3.52 In terms of setting, the house would have once been set within front and rear gardens that would have aided in the legibility of the buildings function and status. However, much of the rear garden has been converted to a sports pitch or developed, resulting in the loss of some of its boundary treatment and amalgamation with No. 66. These changes have compromised and reduced the contribution that setting makes to the building's architectural and historical illustrative values. However, the trees that remain within the grounds are important for the contribution that they make to the character of the conservation area.

3.53 Similarly, the former front garden of the house – which the 1895 map shows had a U-shaped driveway that extended to the hall – is now used for car parking. Although this is a

regrettable alteration the front boundary walls do remain, reflecting the architectural status and style of the principal building.

No. 66 Kings Road – Building of Townscape Merit

Description

Plate 7: Front elevation of No. 68 Kings Road, facing southeast



3.54 Based on the cartographic evidence, No. 66 Kings Road is broadly contemporary in date to No 68. Plans showing the vicarage extension indicate that it was originally known as ‘Fleurier’, which translates as ‘bloom’ or ‘decorate with flowers’. The building – a large two-storey villa (Plate 7) – is built in stock brick. It has a hipped roof with a central dormer window to the front and two further dormer windows to the rear. There are large chimney stacks to either side. At ground level, the front elevation features a large arched doorway with stone detailing – including a decorative key stone. Either side of this there are three-sided, full-height canted bay windows. The remains of a third bay window partially survive on the northern side-elevation of the house, amidst a series of extensions. These windows, as well as the others around the house, have flat segmental arches above them with stone detailing in between. The windows also have projecting wooden sills sat on corbels, capable of accommodating window boxes, which may explain how the house got its name.

3.55 Historic maps suggest that the garage to right-hand side of No.66 was added in the 1960s, and in 1969 planning permission was sought to use the ground floor of No. 66 as a school building (planning application ref: 69/247). This was granted with the condition that the rear garden was not to be

used for playground or other school purposes in order to prevent prejudicing the neighbouring occupiers’ enjoyment of their garden. In the following year this was amended (planning application ref: 69/2032) to allow approximately two thirds of the rear garden to be used as an external instructional area, but not that adjacent to the house. Subsequently, some alterations and additions were made to the building and its grounds:

- an extension to the rear of No. 68 and 66 (1983);
- an emergency fire escape to the staff flat on the upper floor (2004);
- the upper floors of No. 66 were approved for use as classrooms (2006); and,
- sports pitches in the garden.

Plate 8: Rear elevation on No. 66 with modern extensions, facing northwest



Heritage significance

3.56 Like No. 68 the heritage significance of No. 66 is derived primarily from its architectural (aesthetic) quality and historic illustrative value as an exemplar of relatively high-status late-Victorian domestic architecture. These values are important to the character and appearance of the St Matthias Conservation Area and are recognised by the building’s local designation as a Building of Townscape Merit. It also has some communal value as a school and some historical associative value, derived from the public profile of some pupils who attended it.

3.57 Detracting from architectural and historical illustrative values are the extensions to the side and rear of the building, which diminish its legibility and the contribution that it makes to the special interest of the conservation area.

3.58 The building's setting includes its front and rear gardens. These would have originally aided in the legibility of the buildings function and status, however, the contribution that they now make is more limited as the front garden has been converted to car parking and there is development in the back garden that has led to the partial loss of its boundary. The area of garden that remains makes a limited contribution to house's significance by harking back to the building's original domestic function, with the trees contributing to the character of the conservation area.

Chapter 4

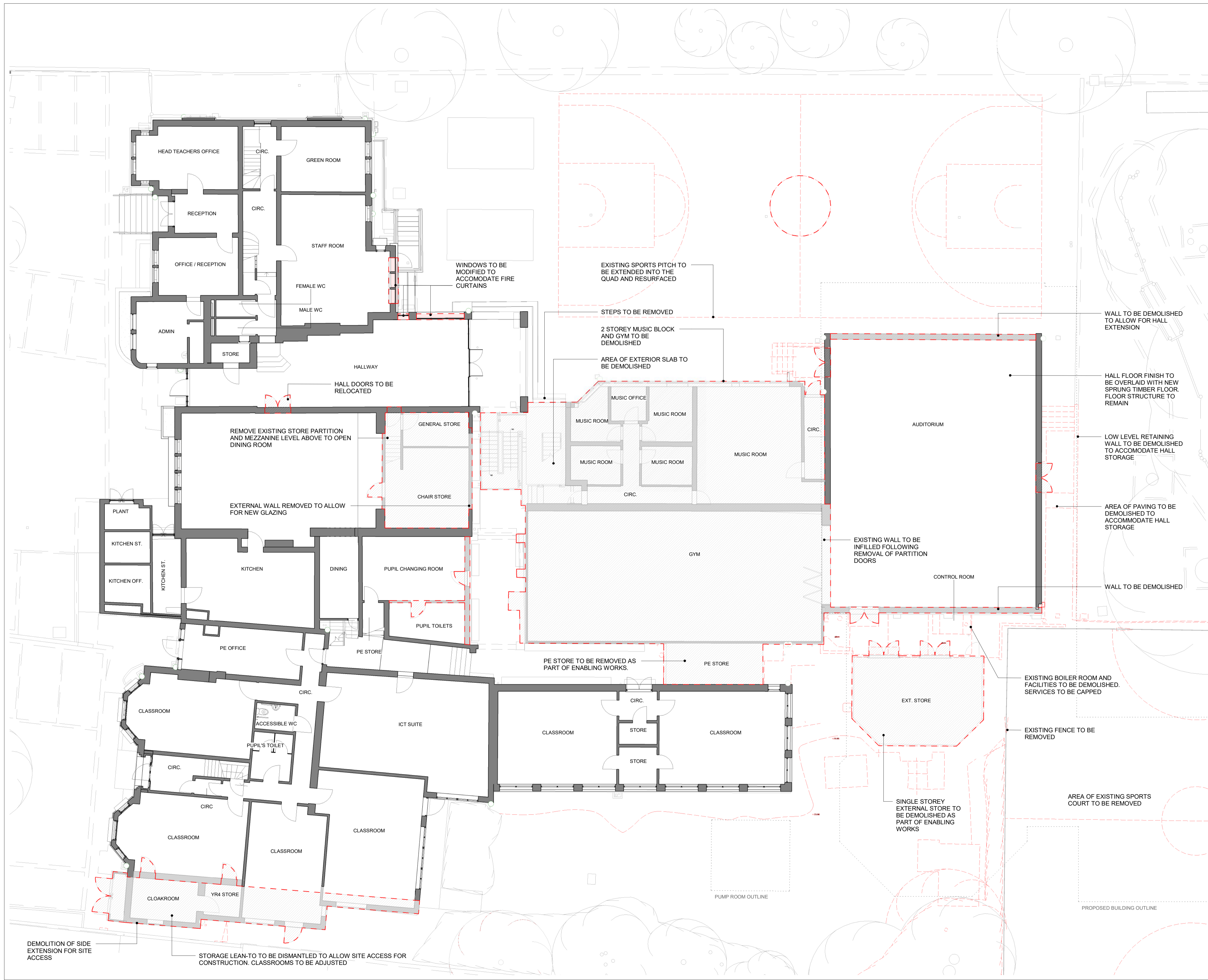
Assessment of effects

The proposed development

4.1 Full details of the proposed scheme for the site may be found in the Design and Access Statement accompanying the planning application. In summary, the planning application proposal comprises three main aspects:

- **Demolition** of a number of existing school buildings (see Figure 4.1), which have been added to the original Victorian and Edwardian houses. The garage to the side of No. 66 will be removed to facilitate construction access.
- The **construction** of a two and three-storey new build teaching block, linking to the existing sports hall, which will be extended to the north (see Figure 4.2). The new teaching facility consists of music and drama classrooms, music practice rooms and general teaching classrooms. There are associated areas for staff, storage and services, which support the running of the building.
- Internal **refurbishment** work to the existing main school buildings and **external modifications** to the rear of the buildings (east elevation). Much of this is internal work or relates to the modern extensions and is therefore not relevant to this report.

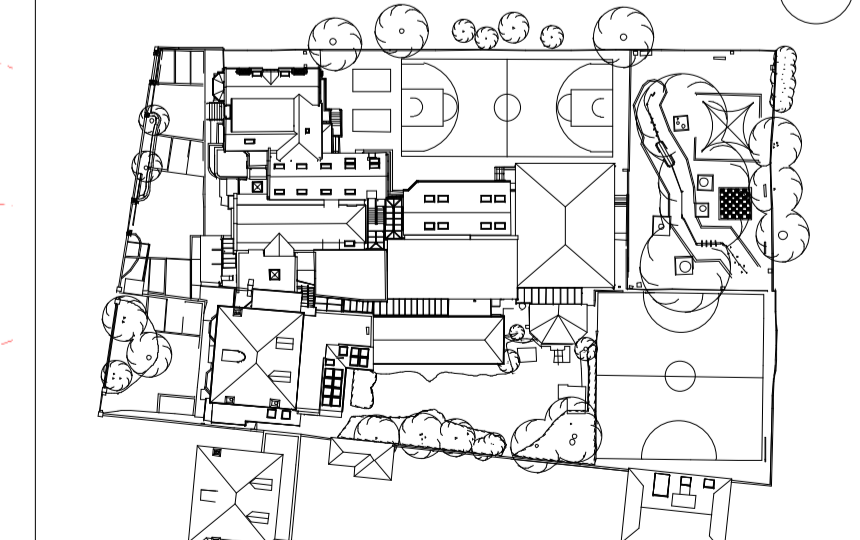
REVISION DETAILS	DATE	DRAWN BY
P 1	UPDATED TO REVISED PHASING	19.02.19 DMA
P 2	UPDATED DEMOLITION AREAS	19.04.19 DMA
P 3	S2 ISSUE FOLLOWING VE EXERCISE	27.09.19 DMA
P 4	ADDITIONAL DEMOLITION TO NO 63	30.09.19 DMA
P 5	ISSUE FOR PLANNING	17.01.20 DMA
P 6	STAGE 3 ISSUE POST PLANNING	14.02.20 DMA
P 7	PLANNING ISSUE	03.03.21 DMA



KEY:
 TO BE DEMOLISHED

KEY RESIDUAL RISK

KEY PLAN



ORIGINATOR: **DMA** TITLE: **DEMOLITION PLAN - GROUND FLOOR**

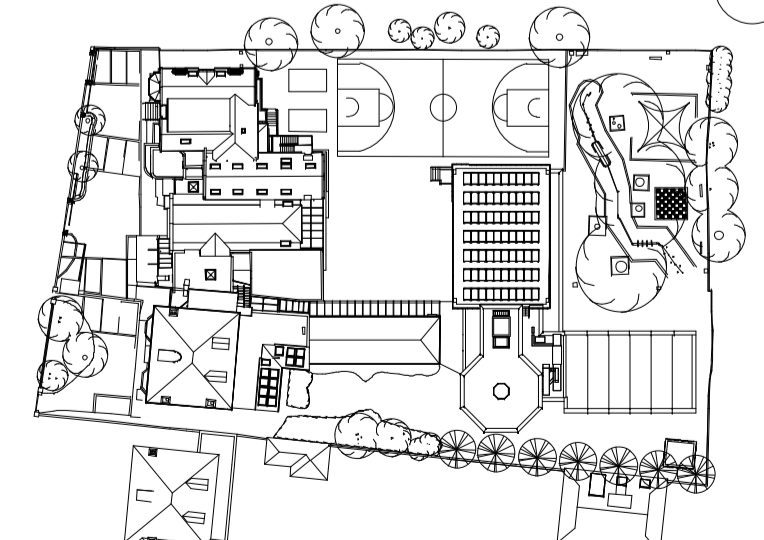
PROJECT	PURPOSE OF ISSUE	STATUS	REVISION:
KING'S HOUSE SCHOOL 48 KING'S ROAD RICHMOND TW9 6ES	FOR INFORMATION	S2	P7
JOB NO. 515	SCALE 1:100 @A1	MF	CHECKED APPROVED
		DRWN	KvdS DMA
PROJECT ORIGINATOR	VOLUME LEVEL TYPE ROLE	DOC NO	
KHS DMA XX GF DR A		02602	

REVISION DETAILS			DATE	DRAWN BY
P 1	ISSUE FOR PLANNING		17.01.20	DMA
P 2	SITE PLAN TO EW		15.12.20	DMA
P 3	REVISED PLANNING APPLICATION		29.01.21	DMA



KEY RESIDUAL RISK

KEY PLAN



ORIGINATOR: **DMA** TITLE: SITE BLOCK PLAN - PROPOSED

PROJECT	PURPOSE OF ISSUE	STATUS	REVISION:
KING'S HOUSE SCHOOL 68 KING'S ROAD RICHMOND TW10 6ES	FOR INFORMATION	S2	P3
JOB NO. 515	SCALE 1:200 @A1	DRAWN MF	CHECKED KvdS
PROJECT ORIGINATOR	VOLUME	LEVEL	TYPE
KHS	DMA	XX	GF
ROLE	DR	A	02103

Potential effects to the St Matthias Conservation Area and the Buildings of Townscape Merit – No. 68 and 66, Kings Road

4.2 The heritage significance of No. 68 and No. 66 Kings Road is derived primarily from their architectural (aesthetic) and historical illustrative value, both of which contribute to the special architectural and historical interest of the St Matthias Conservation Area, as recognised by their local designation as BTMs. Given the interlinked nature of their heritage significance, the three assets have been assessed together.

Demolition

4.3 The proposals call for the demolition of a series of modern extensions to the rear of No. 68 and No. 66. These buildings are of low architectural quality and do not contribute to the significance of either BTM, or the St Matthias Conservation Area. As such, their demolition would not result in any harm to the heritage significance of these assets.

4.4 The modern garage to the side of No. 66 will also be removed. This structure compromises the legibility of the building's façade and its removal will be beneficial, not just to No. 66 but also to the special interest of St Matthias Conservation Area.

Construction

4.5 The proposals sit entirely to the rear of the site. The new buildings will be physically separate from the BTMs and positioned to the rear of their former back gardens, in an area that has changed character significantly since the site was taken over by the school. The position of the new buildings has been amended to allow retention of a number of mature specimen trees which are considered to contribute positively to the character of the site and the wider conservation area.

4.6 There would be some loss of the extant garden to the rear of No.66 but this would be very minor and, given the limited contribution of the garden to the legibility of the buildings' function and status, the effect of this loss is judged to be negligible.

Potential effects to archaeology

4.7 Any ground intrusive works associated with the demolition and construction of the proposed development are likely to give rise to physical effects to the remains of the late post-medieval and modern out-buildings identified in the rear gardens of the site. The potential to impact unknown archaeology is less clear, given the uncertainty surrounding whether the top of the gravels and overlying superficial

deposit, and any archaeology therein, has been truncated or not. In this regard, key impacts include:

- Demolition and grubbing out of existing buildings;
- Piling of foundations and the excavation of services; and,
- Tree removal/ planting.

4.8 The buildings proposed for demolition do not overlie any known archaeological assets. Their removal could harm any unknown archaeology but the potential for unknown remains is considered low and, if present, any remains may have already been disturbed/ truncated by the building's foundations and associated services.

4.9 The construction of the new buildings (e.g. excavation/ piling of foundations and any service trenches required), all entail ground intrusive works that could also give rise to harm to archaeological remains, if present. Those recorded within the area of proposed new buildings include the late post-medieval and modern outbuildings, which are probably glasshouses and sheds, that would be of negligible heritage significance. Any remains associated with these structures, which are unlikely to be substantial, would most likely be removed as a result of the proposed development.

4.10 There is the risk of harm to unknown archaeological remains but, as per the previous section, the likelihood for encountering any significant features is considered to be low. If any remains are present, they are likely to already have been harmed – at least a limited extent – by past development, tree rooting and gardening activity.

Discussion and conclusions

Built heritage

4.11 The proposals have been developed to address the reasons for refusal of application 20/0165. The reasons for refusal were:

U0084117 Reason for refusal: Trees

4.12 By reason of the loss of trees of amenity value, inadequate on-site replacement tree provision and in the absence of a binding agreement to secure an appropriate financial contribution towards offsite tree provision, the development would have a detrimental impact on the quality and character of the environment including the character and appearance of the Conservation Area, amenity and biodiversity in general. The scheme is thereby contrary to the NPPF and the development plan, in particular policies LP1, LP3 and LP16 of the Local Plan and policies 7.4, 7.8 and 7.21 of the London Plan.

U0084116 Reason for refusal: Conservation Area

4.13 The development of the music and classroom blocks, by reason of their siting, scale, height, massing and design, loss of trees and absence of sufficient space to plant new trees to mitigate the loss of those that would be removed, would result in a dominant and visually intrusive form of development that would be detrimental to the character and appearance of this part of the conservation area. The proposal is therefore considered contrary to the NPPF and development plan, in particular policies 7.4, 7.8 and 7.21 of the London Plan, policies LP1, LP2, LP3, LP16 and LP39 of the Local Plan and Richmond and Richmond Hill Village Planning Guidance SPD and St Matthias Conservation Area Statement and Study.

4.14 In historic environment terms therefore, the revised proposals must address the reasons for refusal by avoiding or minimising harm to the significance of the conservation area and the BTMs. The scheme must particularly address the degree to which trees contribute to the character and appearance of the conservation area, and the impact of the design on, and relationship of the new development with, the conservation area. This report addresses the historic environment impacts; amenity, biodiversity and other planning considerations are discussed in the Design and Access Statement and Planning Statement.

4.15 To identify what, if any, level of harm is caused to the heritage assets, PPG (para.018) advises that harm equates to a negative impact on the heritage significance of the assets. No impact, or an enhancement of significance, would equate to no harm. Significance may derive from the physical presence of the assets or from their setting. Where potential harm to designated heritage assets is identified, it needs to be categorised as either less than substantial harm or substantial harm (which includes total loss) in order to identify which policies in paras 194–196 of the NPPF apply. The PPG adds that, when assessing any application which may affect the setting of a heritage asset, LPAs may need to consider the implications of cumulative change (para.013).

4.16 The nature and level of impact of the development on the significance of the conservation area and the BTMs must be considered in light of:

- Its impact compared with the existing rear buildings to be demolished and replaced;
- The relevant aspects of the conservation's area's special character and the significance of the BTMs, namely:
 - Grain, density and layout
 - Architectural character and detail
 - Trees and gardens; and
- The implications of cumulative change in the area.

4.17 The assessment has identified that the demolition of the existing poor-quality modern extensions to the rear of the BTMs will not affect their heritage significance or that of the St Matthias Conservation Area; indeed, the removal of the garage to the south of No. 66 buildings would be beneficial in improving the legibility of the building's façade and the contribution it makes to the conservation area's special interest.

4.18 The significance of the conservation area is based upon its high-quality Victorian and Edwardian residential buildings, their scale and pattern of development, and their diversity of architectural expression. Their mature gardens and trees are also a contributing factor. The proposals preserve:

- The physical presence of the principal street-frontage buildings – which are also BTMs - and their relationship with the street and their historic garden ground;
- The surviving plot form, enclosure and green character of the rear garden ground; and
- The key mature trees within the grounds which contribute to the character of the area;

4.19 In addition, the provision of new trees, green wall/roof elements and improved landscaping will enhance the conservation area and the settings of the BTMs by improving and adding to this element of their significance.

4.20 The development location is within the part of the conservation area identified as already having undergone changes from its original character as a result of a variety of backland developments through the mid- to late-20th century, on the school site and in the wider vicinity. The proposals can be seen as a further continuation of, and to remain in keeping with, this established pattern of development. It is not considered to have any additional impact over that of the existing structures to be removed or to result in a negative cumulative impact with that existing pattern.

4.21 Rather, the approach is one of replacing existing, piecemeal and utilitarian backland structures with a more considered and coherent development. Its massing, form, design detail and materials are considered to respond positively to the character of the conservation area.

4.22 The plan and massing of the main sections of the development have been broken down to read as three distinct and separate forms: the altered and extended sports hall to the north; the two-storey classroom block to the east and the three-storey, octagonal music room block between the two. Visually lightweight linking sections join the blocks and planted green roof and wall elements are integrated into these sections.

4.23 This approach has the effect of avoiding an overly-imposing or monolithic single new building. The new

classroom block borrows from the residential typology of the conservation area to create the effect of a small terrace of gabled units. The octagonal form and placement of the music block acts as a pivot between the north and east 'wings' of the development and, on a modest scale appropriate to its context, has echoes of 'in the round' arts and performance spaces, signalling its purpose. Its top floor is set back from the outer octagonal form to minimise the effect of its height and massing, reading as two storeys plus attic, echoing the format and proportions of the BTMs. The teaching blocks have a traditional ratio of solid to void with relatively small window openings. The sports hall block already exists; its height and massing therefore have no additional impact on the conservation area or the BTMs but its new external treatment helps it to read as a considered element of the overall ensemble.

4.24 The proposed material palette references the historic buildings in the surrounding area – predominantly brick of a Richmond blend in red and buff tones - and introduces a limited range of additional materials applied in a contemporary way – Kalwall glazing, reconstituted stone sills/copings and red bronze coloured metal cladding to the sports hall and upper floor of the octagon. This approach helps to delineate the building as a new addition but in a subtle way which does not challenge the historic character of the BTMs or the wider conservation area. The green roof and wall elements, and the subtly contrasting panels of brick, play a role in breaking up the massing of the blocks, integrating them into their garden setting and contributing to the green, landscaped character of the site.

4.25 The retained trees on the south side of the site preserve the mature garden planting which contributes to the character of the conservation area, and also creates a partial screening effect (dependent upon the season). This further reduces the impact of the proposed development when viewed from the south and obliquely along the southern boundary of the school.

4.26 The tallest part of the proposed development would be roughly the same height as the BTM it sits directly behind – No. 66. However, the ability to experience the new development in tandem with either BTM would be very limited. This is due to the BTMs former rear gardens being bounded by neighbouring properties, with additional strong tree cover to the north between the site and Charmouth Court. From street-level along Kings Road the proposed development would be barely perceptible. Glimpses of the development may be possible behind the dining hall to No. 68 and the existing modern extension that conjoins the two BTMs. It may also be glimpsed through the trees down the southern side of No. 66 as a result of the removal of the modern garage. However, given the distance between the proposed development and the two BTMs, these glimpsed views of the new building would

not detract from the architectural interest of the buildings and would allow them to remain dominant in the streetscape. These glimpses are therefore not considered to cause any harm to the significance of the conservation area or the BTMs.

4.27 As such, the proposed development would have a neutral effect on the heritage significance of the two BTMs, and the contribution that they make to the St Matthias Conservation Area; no harm would be caused by it.

4.28 Overall, the proposed development is considered to preserve the character and appearance of the St Matthias Conservation Area and the special character of the Buildings of Townscape Merit.

Archaeology

4.29 This assessment has identified that the site has low potential for prehistoric and Roman archaeology and very low potential for remains of early medieval to early post-medieval date. There are known assets of late post-medieval and modern date within the site, but these are thought to comprise outbuildings – most likely sheds and glasshouse – of negligible heritage significance. As with any development, there is always the risk of unexpected remains and in this case the risk is slightly higher than normal as the assessment of potential is predicated on a limited evidence base that reflects the absence of investigations in the area.

4.30 Both the known, and any previously unknown assets on the site, may already have been subject to some damage as a result of the past agricultural and use of the site, as well as the existing post-medieval and modern development. The extent of this damage remains unclear; the geotechnical report records made ground directly overlying the natural gravels suggesting that the site has been truncated. However, it is not clear if the top of the gravels – into which archaeological features may be cut – have been removed. Nor if the overlying natural deposit is lost, or simply misidentified as made ground.

4.31 The ground intrusive works associated with the demolition and construction of the proposed development are likely to result in the total loss of the known assets and, if present, the partial removal/ truncation of any unknown assets.

4.32 It is possible that GLAAS may require an archaeological investigation in order to clarify and confirm the truncation and archaeological potential of the site, as well as to redress the lack of investigations in the general area. If archaeological potential is identified, then an appropriate mitigation strategy would be required; this would most likely entail preservation by record. Given the low archaeological potential of the site, and the phased manner of demolition and construction that would take place over a number of years, it is suggested that, if

Chapter 4

Assessment of effects

Music and Classroom Block Resubmission
March 2021

required, a staged programme of investigation could be secured by planning condition.

Appendix A

Legislation and planning policy

Appendix A

Legislation and planning policy

Legislation

A.1 There is national legislation and guidance relating to the protection and treatment of the historic environment within the development process. These identify the historic environment as a non-renewable, fragile and finite resource and place a priority on its conservation. The pertinent piece of legislation in relation to listed buildings and conservation areas is the Planning (Listed Buildings and Conservation Areas) Act 1990. The 1990 Act places a number of duties on decision makers, key amongst these are:

1. Sections 16 and 66, relating to applications for listed building consent and planning permission respectively, state that, in considering applications affecting listed buildings, “special regard” will be had “to the desirability of preserving the building or its setting or any features of special architectural or historic interest which it possesses.”; and,
2. Section 72 which states that, in considering applications affecting conservation areas, “special attention shall be paid to the desirability of preserving or enhancing the character or appearance of that area”.

A.2 In the operation of this law, the concept of ‘preservation’ referred to in Sections 16, 66 and 72 has been interpreted as to do no harm.

Planning policy

National Planning Policy Framework (2019)

A.3 The application of these laws and national policy covering the effects of development on the historic environment are outlined in the National Planning Policy Framework (NPPF). There are references to the historic environment throughout the NPPF but Section 16 ‘*Conserving and enhancing the historic environment*’ deals with the topic in detail.

A.4 The following paragraphs are considered particularly relevant to this application:

Table A.1: Relevant NPPF (2019) policies

Paragraph	Content
189	In determining applications, local planning authorities should require an applicant to describe the significance of any heritage assets affected, including any contribution made by their setting. The level of detail should be proportionate to the assets' importance and no more than is sufficient to understand the potential impact of the proposal on their significance. As a minimum the relevant historic environment record should have been consulted and the heritage assets assessed using appropriate expertise where necessary. Where a site on which development is proposed includes or has the potential to include heritage assets with archaeological interest, local planning authorities should require developers to submit an appropriate desk-based assessment and, where necessary, a field evaluation.
190	Local planning authorities should identify and assess the particular significance of any heritage asset that may be affected by a proposal (including by development affecting the setting of a heritage asset) taking account of the available evidence and any necessary expertise. They should take this into account when considering the impact of a proposal on a heritage asset, to avoid or minimise conflict between the heritage asset's conservation and any aspect of the proposal.
192	In determining planning applications, local planning authorities should take account of: <ul style="list-style-type: none"> ■ the desirability of sustaining and enhancing the significance of heritage assets and putting them to viable uses consistent with their conservation; ■ the positive contribution that conservation of heritage assets can make to sustainable communities including their economic vitality; and ■ the desirability of new development making a positive contribution to local character and distinctiveness.
193	When considering the impact of a proposed development on the significance of a designated heritage asset, great weight should be given to the asset's conservation (and the more important the asset, the greater the weight should be). This is irrespective of whether any potential harm amounts to substantial harm, total loss or less than substantial harm to its significance.
194	Any harm to, or loss of, the significance of a designated heritage asset (from its alteration or destruction, or from development within its setting), should require clear and convincing justification.
196	Where a development proposal will lead to less than substantial harm to the significance of a designated heritage asset, this harm should be weighed against the public benefits of the proposal, including securing its optimum viable use.
197	The effect of an application on the significance of a non-designated heritage asset should be taken into account in determining the application. In weighing applications that directly or indirectly affect non-designated heritage assets, a balanced judgement will be required having regard to the scale of any harm or loss and the significance of the heritage asset.
199	Local planning authorities should require developers to record and advance understanding of the significance of any heritage assets to be lost (wholly or in part) in a manner proportionate to their importance and the impact, and to make this evidence (and any archive generated) publicly accessible ⁶⁴ . However, the ability to record evidence of our past should not be a factor in deciding whether such loss should be permitted.
200	Local planning authorities should look for opportunities for new development within Conservation Areas and World Heritage Sites and within the setting of heritage assets to enhance or better reveal their significance. Proposals that preserve those elements of the setting that make a positive contribution to or better reveal the significance of the asset should be treated favourably.

A.5 Guidance on interpretation of NPPF policies is contained in the conserving and enhancing the historic environment section of the Planning Practice Guidance (PPG).

A.6 Part of this section deals with how to assess if a proposal causes substantial harm to a heritage asset's significance as this is the key policy consideration for designated heritage assets. The PPG states that "Whether a proposal causes substantial harm will be a judgment for the decision taker, having regard to the circumstances of the case and the policy in the National Planning Policy Framework". It goes on to state that "substantial harm is a high test, so it may

not arise in many cases" and that in considering a development's effects it is the "degree of harm to the asset's significance rather than the scale of the development that is to be assessed" and that "harm may arise from works to the asset or from development within its setting".

The London Plan (consolidated with alterations since 2011)

A.7 The replacement London Plan was adopted in July 2011 and sets out the spatial development strategy for Greater London, providing a framework for the development and use

of land over the next 25 years. The March 2016 version consolidates all the alterations to the London Plan since 2011. It provides a strategic, London-wide policy context within which boroughs should set their local planning policies.

Table A.2: Relevant planning policy from the London Plan

Policy	Content
Policy 7.8: Heritage Assets and Archaeology	<p>Strategic</p> <p>A: London's heritage assets and historic environment, including listed buildings, registered historic parks and gardens and other natural and historic landscapes, conservation areas, World Heritage Sites, registered battlefields, scheduled monuments, archaeological remains and memorials should be identified, so that the desirability of sustaining and enhancing their significance and of utilising their positive role in place shaping can be taken into account.</p> <p>B: Development should incorporate measures that identify, record, interpret, protect and, where appropriate, present the site's archaeology.</p> <p>Planning decisions</p> <p>C: Development should identify, value, conserve, restore, re-use and incorporate heritage assets, where appropriate.</p> <p>D: Development affecting heritage assets and their settings should conserve their significance, by being sympathetic to their form, scale, materials and architectural detail.</p> <p>E: New development should make provision for the protection of archaeological resources, landscapes and significant memorials. The physical assets should, where possible, be made available to the public on-site. Where the archaeological asset or memorial cannot be preserved or managed on-site, provision must be made for the investigation, understanding, recording, dissemination and archiving of that asset.</p>

Publication London Plan

A.8 A draft new London Plan was published by the Mayor for consultation in December 2017. It has been subject to examination since January 2019. The Mayor has formally approved the new London Plan, the 'Publication London Plan', and it was sent to the Secretary of State for consideration in December 2020. The significance given to it is a matter for the decision maker, but it gains more weight as it moves through the process to adoption.

A.9 Heritage and Culture are discussed in Chapter 7, which sets out seven policies, but there are further references throughout. The policy of most relevance to this assessment is HC1 Heritage Growth and Conservation which states that:

- Development proposals affecting heritage assets, and their settings, should conserve their significance, by being sympathetic to the assets' significance and appreciation within their surroundings. The cumulative impacts of incremental change from development on heritage assets and their settings, should also be actively managed. Development proposals should seek to avoid harm and identify enhancement opportunities by integrating heritage considerations early on in the design process.
- Development proposals should identify assets of archaeological significance and use this information to avoid harm or minimise it through design and appropriate mitigation. Where applicable, development should make provision for the protection of significant archaeological assets and landscapes. The protection of undesignated heritage assets of archaeological interest equivalent to a scheduled monument should be given equivalent weight to designated heritage assets.

Richmond Local Plan

A.10 The Richmond Local Plan was adopted on 3 July 2018. Key relevant policies are tabulated below.

Table A.3: Relevant policies from the Richmond Local Plan

Policy	Content
Policy LP 1 Local Character and Design Quality	A. The Council will require all development to be of high architectural and urban design quality. The high-quality character and heritage of the borough and its villages will need to be maintained and enhanced where opportunities arise. Development proposals will have to demonstrate a thorough understanding of the site and how it relates to its existing context, including character and appearance, and take opportunities to improve the quality and character of buildings, spaces and the local area.
Policy LP 2 Building Heights	The Council will require new buildings, including extensions and redevelopment of existing buildings, to respect and strengthen the setting of the borough's valued townscapes and landscapes, through appropriate building heights, that preserve and enhance the borough's heritage assets, their significance and their setting.
Policy LP 3 Designated Heritage Asset	A. The Council will require development to conserve and, where possible, take opportunities to make a positive contribution to, the historic environment of the borough. Development proposals likely to adversely affect the significance of heritage assets will be assessed against the requirement to seek to avoid harm and the justification for the proposal. The significance (including the settings) of the borough's designated heritage assets, encompassing

Policy	Content
	<p>Conservation Areas, listed buildings, Scheduled Monuments as well as the Registered Historic Parks and Gardens, will be conserved and enhanced by the following means:</p> <ol style="list-style-type: none"> 1. Give great weight to the conservation of the heritage asset when considering the impact of a proposed development on the significance of the asset. 2. Resist the demolition in whole, or in part, of listed building. Consent for demolition of Grade II listed buildings will only be granted in exceptional circumstances and for Grade II* and Grade I listed buildings in wholly exceptional circumstances following a thorough assessment of the justification for the proposal and the significance of the asset. 3. Resist the change of use of listed buildings where their significance would be harmed, particularly where the current use contributes to the character of the surrounding area and to its sense of place. 4. Require the retention and preservation of the original structure, layout, architectural features, materials as well as later features of interest within listed buildings, and resist the removal or modification of features that are both internally and externally of architectural importance or that contribute to the significance of the asset. 5. Demolitions (in whole or in part), alterations, extensions and any other modifications to listed buildings should be based on an accurate understanding of the significance of the heritage asset. 6. Require, where appropriate, the reinstatement of internal and external features of special architectural or historic significance within listed buildings, and the removal of internal and external features that harm the significance of the asset, commensurate with the extent of proposed development. 7. Require the use of appropriate materials and techniques and strongly encourage any works or repairs to a designated heritage asset to be carried out in a correct, scholarly manner by appropriate specialists. 8. Protect and enhance the borough's registered Historic Parks and Gardens by ensuring that proposals do not have an adverse effect on their significance, including their setting and/or views to and from the registered landscape. 9. Protect Scheduled Monuments by ensuring proposals do not have an adverse impact on their significance. <p>B. Resist substantial demolition in Conservation Areas and any changes that could harm heritage assets, unless it can be demonstrated that:</p> <ol style="list-style-type: none"> 1. in the case of substantial harm or loss to the significance of the heritage asset, it is necessary to achieve substantial public benefits that outweigh that harm or loss; 2. in the case of less than substantial harm to the significance of the heritage asset, that the public benefits, including securing the optimum viable use, outweigh that harm; or 3. the building or part of the building or structure makes no positive contribution to the character or distinctiveness of the area. <p>C. All proposals in Conservation Areas are required to preserve and, where possible, enhance the character or the appearance of the Conservation Area.</p> <p>D. Where there is evidence of intentional damage or deliberate neglect to a designated heritage asset, its current condition will not be taken into account in the decision-making process.</p> <p>E. Outline planning applications will not be accepted in Conservation Areas. The Council's Conservation Area Statements, and where available Conservation Area Studies, and/or Management Plans, will be used as a basis for assessing development proposals within, or where it would affect the setting of, Conservation Areas, together with other policy guidance, such as Village Planning Guidance SPDs.</p>
<p>Policy LP 4 Non-Designated Heritage Assets</p>	<p>The Council will seek to preserve, and where possible enhance, the significance, character and setting of non-designated heritage assets, including Buildings of Townscape Merit, memorials, particularly war memorials, and other local historic features.</p> <p>There will be a presumption against the demolition of Buildings of Townscape Merit.</p>
<p>Policy LP 7 Archaeology</p>	<p>The Council will seek to protect, enhance and promote its archaeological heritage (both above and below ground) and will encourage its interpretation and presentation to the public. It will take the necessary measures required to safeguard the archaeological remains found, and refuse planning permission where proposals would adversely affect archaeological remains or their setting.</p> <p>Desk based assessments and, where necessary, archaeological field evaluation will be required before development proposals are determined, where development is proposed on sites of archaeological significance or potential significance.</p>

Policy	Content
Policy LP 1 Local Character and Design Quality	A. The Council will require all development to be of high architectural and urban design quality. The high-quality character and heritage of the borough and its villages will need to be maintained and enhanced where opportunities arise. Development proposals will have to demonstrate a thorough understanding of the site and how it relates to its existing context, including character and appearance, and take opportunities to improve the quality and character of buildings, spaces and the local area.

A.11 The Richmond Local Plan also sets out requirements for applications that affect designated heritage assets or their settings. These must:

- Describe the significance of any heritage assets affected, including any contribution made by their setting; the extent of the setting will be proportionate to the significance of the asset. Appropriate expertise should be used to assess the significance of a heritage asset and its setting.
- Demonstrate how the development protects, and where possible enhances, the setting, including views, gaps and vistas and any other features, as identified in the relevant Conservation Area Statement/Study, or in relation to a listed buildings, Scheduled Ancient Monument or Historic Park or Garden.
- Set out how particular attention has been paid to scale, proportions, height, massing, historic building lines, the pattern of historic development, use, design, detailing and materials.
- Conserve and retain original or historic garden or landscape features, as well as architectural features such as windows, doors, chimney stacks, walls and gates.
- Describe how the proposal retains the integrity and significance of the building as a whole, the location and hierarchy of rooms, historic floor levels, the structure of the building including foundations, fabric as well as features such as original staircases, original roof structures and other features identified as being of significance.
- Demonstrate that the proposal is of exceptional design that integrates with and makes a positive contribution to the historic environment; and
- Take opportunities to reinstate missing features which are considered important to, or to remove additions or modifications that harm, the significance of the asset.

A.12 Applicants will be expected to demonstrate how the proposal complies with the relevant Conservation Area appraisals, plans and studies, as well as the Village Planning Guidance SPDs, and any other relevant SPDs/SPGs adopted by the Council. These will also be used when assessing

proposals within and/or affecting designated heritage assets. The level of detail provided should be proportionate to the importance of the heritage asset.

A.13 Other relevant policies are considered in more detail in the Design and Access Statement.

Supplementary Planning Guidance

Buildings of Townscape Merit Supplementary Planning Document (SPD) (2015)

A.14 This document sets out the criteria by which BTMs are designated:

- Any building or structure which dates from before 1840.
- Later buildings or structures which are of definite quality and character, including the work of important architects and builders. Particular attention will be paid to buildings which:
 - a. Have important historic associations, in terms of famous people or events;
 - b. Illustrates an important aspect of social or economic history or use;
 - c. Represent an exceptionally good example of a specific and distinctive architectural style;
 - d. Demonstrate excellence in building craftsmanship, use of materials, technical innovation, architectural features and detailing;
 - e. Form part of a distinctive and cohesive group of buildings;
 - f. Retain its original architectural interest and integrity, and not subject to insensitive alterations;
 - g. Have landmark quality or make a unique and positive contribution to the quality of the townscape or an open space.

A.15 It sets out that there will always be a presumption against the demolition of Buildings of Townscape Merit. Consent for demolition will only be granted when the Council is assured that retention and adaptation is not possible and where the proposed replacement is consistent with other policies and exhibits a high standard of design that would

complement the surrounding area. Should demolition prove necessary, a high standard of design that complements the surrounding area will be required in any replacement building.

Richmond and Richmond Hill Village Planning Guidance SPD (2016)

A.16 This document sets out locally specific guidance on design and character is set out in the Council's Village Planning Guidance SPDs, which applicants are expected to follow for any alterations and extensions to existing BTMs, or for any replacement structures. Key relevant policies are tabulated below.

Table A.4: Relevant policies in the Village Planning Guidance SPD (2016)

Policy	Content
DMP Policy DM HD 1 Conservation Areas – designation, protection and enhancement	Buildings or parts of buildings, street furniture, trees and other features which make a positive contribution to the character, appearance or significance of the area should be retained.
DMP Policy DM HD 3 Buildings of Townscape Merit Preservation and enhancement of Buildings of Townscape Merit.	The Council will use its powers where possible to protect their significance, character and setting.

Appendix B

**GLHER search 15969
results**

Greater London Designation Full Report

11/12/2020

GLHER Report 15969 S Ref. 11158, Kings House School Re-submission TQ 18723 74753 500m radius search APA

DesigUID: DLO33468 **Type:** Archaeological Priority Area **Status:** Active

GLHER No **Borough No** **Other Ref**

DLO33468

Name: Richmond

Grade: APA **Date Assigned** 30/06/1999 **Amended:** 11/08/2010 **Revoked:**

Legal Description

Early Medieval settlement of the Manor of Sceanes (Shene). Renamed Richmond through the construction of Richmond Palace by Henry VII in 1501.

Evidence of prehistoric activity has been found along the riverbank. Kempton Park gravels over London Clay. Alluvium either side of the Thames.

Curatorial Notes

Designating Organisation Greater London Archaeology Advisory Service

Location

Grid Reference: Centred TQ 1771 7476 (1352m by 1254m)

Map sheet: TQ17SE **Area (Ha):** 858,961.84

Administrative Areas

Borough RICHMOND UPON THAMES

Postal Addresses - None recorded

Sources - None recorded

Associated Monuments

020843/00/00 Find Spot: Richmond {Palaeolithic flint implements}
020922/00/00 Monument: HERON COURT
020922/01/00 Find Spot: HERON COURT
020922/02/00 Find Spot: HERON COURT
020922/03/00 Find Spot: HERON COURT
020945/00/00 Find Spot: Richmond {Neolithic flint arrowhead}
020946/00/00 Find Spot: Richmond {Neolithic flint axe and adze}
020947/00/00 Find Spot: Richmond {Palaeolithic flint scraper}
020948/00/00 Find Spot: Richmond {Neolithic flint axe}
020949/00/00 Find Spot: Richmond {Palaeolithic flake}
020950/00/00 Find Spot: Richmond {Neolithic lithic implements}
021005/00/00 Find Spot: Richmond {Bronze Age spearhead}
021029/00/00 Find Spot: RICHMOND HILL
021030/00/00 Find Spot: RIVER THAMESSURREY BANK
021031/00/00 Find Spot: Richmond {Bronze Age spearhead}
021038/00/00 Find Spot: DENTON RD
021121/00/00 Monument: TWICKENHAM PARK
021122/00/00 Monument: TWICKENHAM PARK
021123/00/00 Monument: TWICKENHAM PARK
021125/00/00 Monument: Old Palace Yard, Richmond {Site of Richmond Palace}
021125/01/00 Monument: OLD PALACE YARD
021125/02/00 Monument: OLD PALACE YARD
021125/03/00 Monument: OLD PALACE YARD
021125/04/00 Monument: OLD PALACE YARD

021126/00/00 Monument: SHEEN MANOR
021126/01/00 Monument: SHEEN MANOR
021127/00/00 Monument: OLD PALACE YARD
021128/00/00 Monument: CORPORATION ISLAND
021130/00/00 Monument: RAVENSBOURNE RD JUNCTION WITH
021133/00/00 Find Spot: RICHMOND PALACE
021138/00/00 Monument: RICHMOND PALACE
021139/00/00 Monument: THE RETREAT
021140/00/00 Monument: The Green, [Old Friars], Richmond, {Richmond Red Cross Hospital during World War One}
021140/01/00 Monument: OLD FRIARS
021141/00/00 Monument: SHEEN
021142/00/00 Monument: FRIARS LA
021267/00/00 Monument: Lichfield Gardens, [Car park] {Post medieval quarry/rubbish pit and building}
021742/00/00 Monument: RICHMOND GREEN
021743/00/00 Monument: RICHMOND GREEN
021744/00/00 Monument: RICHMOND GREEN
021757/00/00 Monument: WILLOUGHBY RD
021870/00/00 Monument: George Street (Nos 29-34), Richmond-upon-Thames {Post Medieval well}
021870/01/00 Monument: George Street (Nos 29-34), Richmond-upon-Thames
021870/02/00 Monument: George Street (Nos 29-34), Richmond-upon-Thames {Post medieval ditch}
021875/00/00 Monument: RICHMOND GREEN (THE OLD PALACE)
021876/00/00 Monument: RICHMOND GREEN (THE OLD PALACE)
021877/00/00 Monument: RICHMOND GREEN (THE OLD PALACE)
021878/00/00 Monument: RICHMOND GREEN (THE OLD PALACE)
021926/00/00 Find Spot: LANCASTER MEWS
021927/00/00 Find Spot: LANCASTER MEWS
021977/00/00 Find Spot: George Street (Nos 16-17), Richmond
021978/00/00 Find Spot: George Street (Nos 16-17), Richmond
021979/00/00 Monument: George Street (Nos 16-17), Richmond
021980/00/00 Monument: George Street (Nos 16-17), Richmond
021981/00/00 Monument: George Street (Nos 16-17), Richmond
021982/00/00 Monument: George Street (Nos 16-17), Richmond
022007/00/00 Monument: George Street (No 22), [National Westminster Bank] {Georgian buildings}
022008/00/00 Monument: George Street (No 22), [National Westminster Bank] {Post medieval mortared yard}
022153/00/00 Monument: George Street (Nos 9-10), Richmond
022370/00/00 Find Spot: RICHMOND BRIDGE
022435/00/00 Monument: THAMES FORESHORE
022436/00/00 Monument: THAMES FORESHORE
022450/00/00 Monument: THAMES FORESHORE
022451/00/00 Monument: THAMES FORESHORE
022452/00/00 Monument: THAMES FORESHORE
022453/00/00 Monument: THAMES FORESHORE
022454/00/00 Monument: THAMES FORESHORE
022455/00/00 Monument: THAMES FORESHORE
022456/00/00 Monument: THAMES FORESHORE
022457/00/00 Monument: THAMES FORESHORE
022458/00/00 Monument: THAMES FORESHORE
022459/00/00 Monument: THAMES FORESHORE
022460/00/00 Find Spot: THAMES FORESHORE

022461/00/00	Monument: THAMES FORESHORE
022462/00/00	Monument: THAMES FORESHORE
022463/00/00	Monument: THAMES FORESHORE
022464/00/00	Monument: THAMES FORESHORE
022465/00/00	Monument: THAMES FORESHORE
022466/00/00	Monument: THAMES FORESHORE
022467/00/00	Monument: THAMES FORESHORE
022468/00/00	Monument: THAMES FORESHORE
022469/00/00	Monument: THAMES FORESHORE
022470/00/00	Monument: THAMES FORESHORE
022471/00/00	Find Spot: THAMES FORESHORE
023262/00/00	Place: RICHMOND BRIDGE ST
023263/00/00	Monument: Richmond {Medieval settlement of Sceon}
023266/00/00	Monument: TWICKENHAM PARK
023267/00/00	Monument: DUCKS WALK
025504/00/000	Monument: WHITTAKER AVE
025516/00/000	Monument: 1 DUCKS WALK TWICKENHAM
025517/00/000	Monument: 1 DUCKS WALK TWICKENHAM
025518/00/000	Monument: 1 DUCKS WALK TWICKENHAM
025631/00/000	Monument: Eton Street (No 12)/Union Court, Richmond
100249/00/00	Find Spot: RICHMOND BRIDGE
100250/00/00	Find Spot: River Thames, [near Richmond Bridge] {Bronze Age bronze dagger}
100251/00/00	Find Spot: RICHMOND BRIDGE
100252/00/00	Find Spot: RICHMOND BRIDGE (ISLAND JUST BELOW)
100269/00/00	Find Spot: CORPORATION ISLAND
100270/00/00	Find Spot: CORPORATION ISLAND
100271/00/00	Find Spot: CORPORATION ISLAND
201000/00/00	Monument: FRIARS LA
201264/01/00	Monument: Richmond Green (No 6A), Richmond
MLO100298	Find Spot: Richmond (known as)
MLO104993	Listed Building: Cholmondeley Walk (No 2) [Cholmondeley Cottage], Richmond {18th century House}
MLO104994	Listed Building: Cholmondeley Walk (No 3) [Cholmondeley House], Richmond {18th century House}
MLO58984	Monument: Heathcote Road, Twickenham Bridge {Roman settlement remains}
MLO61839	Find Spot: Parkshot (Nos 10-12)/Kew Road (Nos 5-21), [Parkshot House] {Prehistoric flints}
MLO61841	Find Spot: Parkshot (Nos 10-12)/Kew Road (Nos 5-21), [Parkshot House] {Roman potsherd}
MLO61842	Monument: Parkshot (Nos 10-12)/Kew Road (Nos 5-21), [Parkshot House]
MLO61844	Monument: Parkshot (Nos 10-12)/Kew Road (Nos 5-21), [Parkshot House] {Medieval flood deposit}
MLO61845	Monument: Parkshot (Nos 10-12)/Kew Road (Nos 5-21), [Parkshot House] {Medieval plough soil}
MLO61846	Monument: Parkshot (Nos 10-12)/Kew Road (Nos 5-21), [Parkshot House] {Post medieval garden soil}
MLO75641	Monument: Old Palace Lane
MLO75643	Monument: 'Old Palace'
MLO75645	Monument: Crane Wharf
MLO75646	Monument: Trumpeters' House
MLO76242	Monument: OLD PALACE PLACE, RICHMOND
MLO77283	Monument: Old Palace Lane
MLO77284	Monument: Old Palace Lane

MLO77285	Monument: Old Palace Lane
MLO77286	Monument: Friars Lane
MLO77287	Monument: Trumpeters' House
MLO77288	Monument: Trumpeters' House
MLO78179	Monument: 2 Old Palace Place, Richmond
MLO86151	Listed Building: 22 Kew Road
MLO86156	Listed Building: 7 King Street
MLO86157	Listed Building: 8 King Street
MLO90891	Listed Building: Queensberry Place, [Nos 1 to 5 consecutive], Friars Lane, Richmond, {early 19th century terrace of five houses}
MLO90892	Listed Building: ST HELENA HOUSE
MLO90893	Listed Building: Cholmondeley Walk (No 1) [Cholmondeley Lodge], Richmond {18th century House}
MLO90894	Listed Building: GREYHOUND HOUSE
MLO90895	Listed Building: HALFORD HOUSE AND RICHMOND SCHOOL OF MUSIC
MLO90923	Listed Building: 3 Church Walk
MLO90929	Listed Building: 16 Brewers Lane
MLO90930	Listed Building: 10 Brewers Lane
MLO90931	Listed Building: 16 Brewers Lane
MLO90932	Listed Building: 16 Brewers Lane
MLO90933	Listed Building: 16 Brewers Lane
MLO90934	Listed Building: 16 Brewers Lane
MLO90935	Listed Building: MILESTONE OBELISK TO THE EAST END OF RICHMOND BRIDGE
MLO90942	Listed Building: The Old Court House The Green
MLO90943	Listed Building: DRINKING FOUNTAIN AT SOUTH CORNER OF THE GREEN
MLO90944	Listed Building: The Old Court House The Green
MLO90945	Listed Building: The Old Court House The Green
MLO90946	Listed Building: The Old Court House The Green
MLO90947	Listed Building: The Old Court House The Green
MLO90948	Listed Building: GATES AND RAILINGS TO OAK HOUSE AND OAK HOUSE
MLO90949	Listed Building: The Green, [Old Palace Place], Richmond, {Annex to Richmond Red Cross Hospital during World War One}
MLO90950	Listed Building: GATE AND RAILINGS TO OLD FRIARS AND OLD FRIARS
MLO90951	Listed Building: TUDOR HOUSE AND TUDOR PLACE
MLO90952	Listed Building: Maids of Honour Row, [Nos 1-4 consecutive], Richmond Green, {1720s terrace houses, gates and railings}
MLO90953	Listed Building: THE GATE HOUSE AND THE OLD PALACE
MLO90954	Listed Building: PEMBROKE VILLAS
MLO90955	Listed Building: CAST IRON STANDARD AT JUNCTION WITH THE VINEYARD
MLO90956	Listed Building: Petersham Road (No. 5) [No. 4 The Paragon] Richmond upon Thames Greater London {18th century house}
MLO90957	Listed Building: Petersham Road (No. 59) [No. 2 The Paragon] Richmond Upon Thames Greater London {18th century house}
MLO90958	Listed Building: BINGHAM HOUSE HOTEL
MLO90965	Listed Building: 136 Petersham Road
MLO90971	Listed Building: The Old Court House The Green
MLO90972	Listed Building: OLD PALACE TERRACE
MLO90973	Listed Building: The Old Court House The Green
MLO90974	Listed Building: The Green (No 11), Richmond, TW9 1PX {18th century house and railings}
MLO90975	Listed Building: GREENSIDE HOUSE
MLO90976	Listed Building: The Old Court House The Green

MLO90977	Listed Building: The Old Court House The Green
MLO90978	Listed Building: GAZEBO IN GARDEN OF TRUMPETERS' HOUSE
MLO90979	Listed Building: LISSOY
MLO90980	Listed Building: 7 Ormond Road
MLO90981	Listed Building: 5 Ormond Road
MLO90982	Listed Building: 6 Ormond Road
MLO90983	Listed Building: 7 Ormond Road
MLO90984	Listed Building: ORMOND HOUSE
MLO90985	Listed Building: ORMOND LODGE AND THE VICARAGE
MLO90986	Listed Building: THE HOLLIES AND THE ROSARY
MLO90989	Listed Building: SPRING TERRACE
MLO90990	Listed Building: BUTE LODGE
MLO90993	Listed Building: PARKSHOT COTTAGE
MLO90994	Listed Building: 2 Paved Court
MLO90995	Listed Building: 10 Paved Court
MLO90996	Listed Building: 14 Paved Court
MLO90997	Listed Building: 1 Paved Court
MLO90998	Listed Building: 13 Paved Court
MLO90999	Listed Building: 18 King Street
MLO91000	Listed Building: 19 King Street
MLO91008	Listed Building: VINE ROW
MLO91009	Listed Building: 3 Little Green
MLO91010	Listed Building: RICHMOND THEATRE
MLO91019	Listed Building: THE VIRGINALS
MLO91020	Listed Building: Old Palace Lane, [Consecutive Nos 8-13], Richmond, {19th century terrace}
MLO91043	Listed Building: CHRISTIES
MLO91044	Listed Building: 84 Hill Rise
MLO91045	Listed Building: 84 Hill Rise
MLO91046	Listed Building: 76 Hill Rise
MLO91047	Listed Building: 5 Hill Street
MLO91073	Listed Building: RICHMOND CENTRAL LENDING LIBRARY
MLO91074	Listed Building: 7 Sheen Road
MLO91075	Listed Building: 36 Sheen Road
MLO91076	Listed Building: 17 Sheen Road
MLO91077	Listed Building: COURT LODGE
MLO91089	Listed Building: HERMITAGE HOUSE (PART OF FORMER QUEEN ANNE HOTEL)
MLO91121	Listed Building: 6 Hill Rise
MLO91122	Listed Building: MAIDS OF HONOUR TEA SHOP
MLO91133	Building: Kew Road (No.31-35) {18th Century Houses}
MLO91134	Listed Building: CHURCH OF ST JOHN THE DIVINE
MLO91136	Listed Building: 17 King Street
MLO91137	Listed Building: 2 Little Green
MLO91138	Listed Building: ONSLOW HALL
MLO91144	Listed Building: ASGILL HOUSE
MLO91145	Listed Building: SPRING TERRACE
MLO91146	Listed Building: CHALOM HOUSE AND SPRING TERRACE
MLO91147	Listed Building: CHURCH OF ST MARY MAGDALENE
MLO91150	Listed Building: WALLS ENCLOSING PATTEN ALLEY
MLO91151	Listed Building: 2 Paved Court
MLO91152	Listed Building: 1 Paved Court

MLO91153	Listed Building: 11 Paved Court
MLO91154	Listed Building: Flat 1 39 Petersham Road
MLO91158	Listed Building: RICHMOND BRIDGE
MLO91159	Listed Building: The Old Court House The Green
MLO91160	Listed Building: The Old Court House The Green
MLO91161	Listed Building: The Old Court House The Green
MLO91162	Listed Building: The Old Court House The Green
MLO91163	Listed Building: Richmond Green [Old Court House], Richmond, TW9 {18th century house}
MLO91164	Listed Building: Richmond Green [Wentworth House], Richmond, TW9 {18th century house}
MLO91165	Listed Building: 2 Richmond Hill
MLO91166	Listed Building: THE OLD VICARAGE SCHOOL
MLO91170	Listed Building: THE TERRACE
MLO91177	Listed Building: A 11 Richmond Hill
MLO91185	Listed Building: RYDE HOUSE
MLO91192	Listed Building: ST HELENA TERRACE
MLO91193	Listed Building: WHITE CROSS HOTEL
MLO91226	Listed Building: 36 Sheen Road
MLO91227	Listed Building: 43 Sheen Road
MLO91234	Listed Building: 34 Sheen Road
MLO91235	Listed Building: MARSHGATE HOUSE, WITH GATE AND RAILINGS
MLO91236	Listed Building: 38 Sheen Road
MLO91240	Listed Building: 4 The Square
MLO91281	Listed Building: CLARENCE HOUSE
MLO91282	Listed Building: BISHOP DUPPA'S ALMSHOUSES
MLO91283	Listed Building: BRICK GARDEN WALL AT SIDE OF NUMBER 26 WITH GATE AND PIERS
MLO91284	Listed Building: 11 The Vineyard
MLO91285	Listed Building: IRON RAILINGS ON WEST SIDE OF PASSAGE ALONG TOPS OF TOMB SLABS FROM REAR OF 26 HAEFORD ROAD TO REAR OF PETTY SESSIONS COURT ALSO INCLUDING VAULTS BELOW
MLO91287	Listed Building: 11 Waterloo Place
MLO91292	Listed Building: NEWAERK HOUSE
MLO91293	Listed Building: MONUMENT TO THOMAS AND MARY CUNDY
MLO91294	Listed Building: WALLS TO DISUSED GRAVEYARD (BRICK WALL FORMING SIDE OF PASSAGE)
MLO91295	Listed Building: WAREHOUSE ON CORNER OF WATER LANE AND RIVERSIDE
MLO91307	Listed Building: K6 TELEPHONE KIOSK ADJACENT TO RICHMOND BRIDGE
MLO91316	Listed Building: ODEON CINEMA
MLO91320	Listed Building: The Vineyard, (No11), Richmond, {K6 Telephone Kiosk}
MLO91329	Listed Building: Richmond Hill, [28-40], Richmond, London, TW10 6QX {mid -19th Century Housing Terrace}
MLO91338	Listed Building: Little Green, [United Reformed Church], Richmond {19th Century Church}
MLO91340	Listed Building: Twickenham Road, [Richmond Baths], Old Deer Park, Richmond {Public swimming pools and lido}
MLO91353	Listed Building: Richmond Green [Pair of K6 Telephone Kiosks] Richmond {20th century telephone kiosk}
MLO91358	Listed Building: Kew Road [Milestone] Richmond {18th century milestone}
MLO91368	Listed Building: Church Terrace (Nos 2 & 5), Richmond {18th Century Terrace}
MLO91369	Listed Building: Willoughby Road (1) [Willoughby House] Richmond {19th century house}
MLO91372	Listed Building: The Vineyard [Michael's Almshouses, and Front Wall, Railings and Entrance Gates] Richmond {19th century almshouse}

MLO91378	Listed Building: The Vineyard [Church of St Elizabeth of Portugal] Richmond {19th century church}
MLO91379	Listed Building: The Vineyard [Vineyard House] Richmond {18th century house}
MLO91380	Listed Building: The Vineyard (1-7) [Michel's Place] Richmond {19th century terraced house}
MLO91398	Listed Building: The Square (4) [The Clock Tower] Richmond {19th century clock tower}
MLO91399	Listed Building: Sheen Road (40-46), Richmond {18th century terraced house}
MLO91401	Listed Building: Sheen Road (45), Richmond {18th century house}
MLO91434	Listed Building: Richmond Green (No 8-9), Richmond {18th-19th century house}
MLO91435	Listed Building: Richmond Green (No 2) [Old Terrace House] Richmond {18th-19th century house}
MLO91437	Listed Building: No name for this entry
MLO91438	Listed Building: No Name for this Entry
MLO91443	Listed Building: King Street (No 6), Richmond {18th century house}
MLO91444	Listed Building: Kew Green (Nos 23-25) Richmond, TW9 2NQ {Late 18th century houses}
MLO91445	Listed Building: Hill Rise (Nos 62-66), Richmond, TW10 6UB {Late 18th- early 19th century house}
MLO91446	Listed Building: Hill Rise (No 34) [Holbrook House], Richmond, TW10 6UB {18th century house}
MLO91455	Listed Building: King Street, (No. 3), Richmond, TW9 1ND {18th century public house}
MLO91456	Listed Building: Friars Lane, Richmond, TW9 1NL {18th century gazebo}
MLO91462	Listed Building: Sheen Road, (No. 9), Richmond, TW9 1AD {18th century house and modern shop front}
MLO91463	Listed Building: Sheen Road, (No. 21), Richmond, TW9 1AD {19th century house and shop front}
MLO91464	Listed Building: Richmond Hill, (No. 54), [Gloucester House], Richmond, TW10 6RQ {19th century house}
MLO91469	Listed Building: Heron Court, [Palm Court Hotel], Richmond, TW9 {18th century house with later extensions}
MLO91482	Listed Building: Hill Rise, (Nos. 3-17), Richmond, TW10 6UQ {18th century terrace and shops}
MLO91483	Listed Building: Hill Rise, (Nos. 24-32), Richmond, TW10 6UB {Early 18th century houses and shop fronts}
MLO91484	Listed Building: Hill Rise, (No. 84), Richmond, TW10 6UB {18th century house and shop}
MLO91485	Listed Building: Hill Street, (No. 12 and 14), Richmond, TW9 1TN {19th century houses and shops}
MLO91487	Listed Building: Kew Green, (No. 21), Richmond, TW9 {18th century house}
MLO91492	Listed Building: Paved Court, (No. 10), Richmond, TW9 1LZ {17th century terraced house}
MLO91493	Listed Building: Paved Court, (No. 1), Richmond, TW9 1LZ {18th century house with shop}
MLO91494	Listed Building: King Street, (No. 19), Richmond, TW9 1ND {18th century house and shop}
MLO91504	Listed Building: The Wardrobe, (Nos. 1-3), Richmond, TW9 1PA {16th and 18th century palace building}
MLO91511	Listed Building: Petersham Road, (Nos. 43-47), [The Ivy Hall Hotel], Richmond, TW10 6UL {Early 18th century house}
MLO91512	Listed Building: Petersham Road, (No. 57), [The Paragon], Richmond, TW10 {Early 18th century house}
MLO91513	Listed Building: Petersham Road, (No. 61), [The Paragon], Richmond, TW10 {Early 18th century house}
MLO91517	Listed Building: The Green, Richmond, TW9 1PB {19th century lamp standard}
MLO91518	Listed Building: The Green, (No. 3), [Gothic House and Old Palace Terrace], Richmond, TW9 1PB {18th century house}
MLO91519	Listed Building: The Green, (No. 10), Richmond, TW9 1PB {Early 18th century house}
MLO91520	Listed Building: The Green, (No. 14), Richmond, TW9 1PB {18th century house}
MLO91521	Listed Building: Richmond Green, (No. 18), Richmond, TW9 1PB {18th century house}
MLO91522	Listed Building: Old Palace Yard, [The Trumpeters' House], Richmond, TW9 1PA {18th century house}

MLO91524	Listed Building: Ormond Road, (No. 3), Richmond, TW10 6TH {18th century terraced house}
MLO91525	Listed Building: Paradise Road, (Nos. 3 - 4), [Spring Terrace], Richmond, TW9 {Terraced houses}
MLO91526	Listed Building: Paradise Road, (Nos. 32-34), [Hogarth House], Richmond, TW9 {18th century house}
MLO91529	Listed Building: Parkshot, (Nos. 4 - 6), Richmond, TW9 2RD {18th century terraced houses}
MLO91530	Listed Building: The Green, (No. 25), Richmond, TW9 {18th century house}
MLO91531	Listed Building: The Green, (No. 29), Richmond, TW9 {18th century house with shop front}
MLO91532	Listed Building: The Green, (No. 32), Richmond, TW9 {18th century terraced house}
MLO91533	Listed Building: Portland Terrace, (Nos. 1-4), Richmond, TW9 {19th century terraced houses}
MLO91625	Listed Building: Church Terrace, [Bethlehem Chapel], Richmond, TW10 6SE {Late 18th century chapel}
MLO91628	Listed Building: Brewers Lane, (No. 5), [Britannia Public House], Richmond, TW9 1HH {18th century public house}
MLO91629	Listed Building: Bridge Street, (Nos. 10- 12), Richmond, TW9 1TQ {19th century house}
MLO91669	Listed Building: Church Road, (Nos. 6-8), [St Johns Studios], Richmond, TW9 2QA {Early 20th century former parish hall}
MLO91670	Listed Building: Hunters Court, Richmond, TW9 {16th century wall}
MLO91685	Listed Building: Sheen Road, (Nos. 1-211, 1-17), [Lichfield Court, Lichfield Terrace], Richmond, TW9 {20th century flats and terraced houses}
MLO98334	Monument: Maid of Honour Lane, The Green [The Old Palace], TW10 {17th+18th building remains}
MLO99300	Monument: Friars Lane, [Car Park], Richmond, {early 18th century reclamation dumps and later development}
MLO99302	Monument: Maids of Honour Row, [No 4], The Green, Richmond, {post medieval drain}
MLO99303	Monument: Queensberry Place, [Rear of No 2], Friars Lane, Richmond, {post medieval drain and culvert}
MLO99304	Monument: Duke Street, [Duke Street Baptist Church], Richmond, {medieval garden soil}

Additional Information

Greater London Event/Activity Full Report

11/12/2020

Number of records: 3

GLHER Report 15969 S Ref. 11158, Kings House School Re-submission TQ 18723 74753 500m radius search Events

Event ID	Event Name	Event Type
ELO12496	Spring Terrace (No 4), Richmond: Desk Based Assessment	Backlog Report

External Reference:

Dates: 01/09/2011 - 30/09/2011, at some time (2011-2012)

Project Details:

Event/Activity Types - None recorded

Thesaurus Event Types - None recorded

Event/Activity References - None recorded

Organisation: CgMs Consulting

Associated Individuals

Meager, Richard - CgMs Consulting	Author
Millward, Melanie - Greater London Archaeology Advisory Service	GIS Record Created
Millward, Melanie - Greater London Archaeology Advisory Service	Compiler

Associated Organisations

CgMs Consulting	Researcher
Greater London Archaeology Advisory Service	GIS Record Created
Greater London Archaeology Advisory Service	Compiler

Location

4 Spring Terrace
Richmond

Grid Reference

Centred TQ 18232 74887 (44m by 57m) TQ17SE Area

Administrative Areas

Borough RICHMOND UPON THAMES

Address

4 Spring Terrace, Richmond, London

Description and Sources

Description

A desk based assessment was undertaken at 4 Spring Terrace, Richmond by CgMs Consulting in September 2011. The site was considered to have a moderate potential for prehistoric remains, with high levels of modern disturbance across the site.

Sources

Digital Report: CgMs Consulting. 2012. Archaeological Desk Based Assessment, 4 Spring Terrace, Richmond upon Thames.

Associated Monuments - None recorded

Event ID: ELO13992 **Name:** Spring Terrace (Nos 1-2), Richmond, TW1: Desk Based Assessment

Event ID	Event Name	Event Type
ELO13992	Spring Terrace (Nos 1-2), Richmond, TW1: Desk Based Assessment	Backlog Report

External Reference:

Dates: 01/03/2014 - 31/03/2014, at some time (2014)

Project Details:

Event/Activity Types

Desk Based Assessment

Thesaurus Event Types

DESK BASED ASSESSMENT

Event/Activity References - None recorded

Organisation: CgMs Consulting

Associated Individuals

Clarke, Chris - CgMs Consulting	Author
Millward, Melanie - Greater London Archaeology Advisory Service	Compiler
Millward, Melanie - Greater London Archaeology Advisory Service	GIS Record Created

Associated Organisations

CgMs Consulting	Researcher
Giarti Ltd	Architect
Greater London Archaeology Advisory Service	GIS Record Created
Greater London Archaeology Advisory Service	Compiler

Location

1-2 Spring Terrace
Richmond

Grid Reference

Centred TQ 1820 7486 (54m by 70m) TQ17SE Area

Administrative Areas

Borough RICHMOND UPON THAMES

Address

1-2 Spring Terrace, Richmond, London, TW9

Description and Sources

Description

A desk based assessment was undertaken at 1-2 Spring Terrace, Richmond in March 2014 by CgMs Consulting.

The site is thought to have a moderate potential for the prehistoric and post medieval periods.

Sources

Digital Report: CgMs Consulting. 2014. Archaeological Desk Based Assessment, 1-2 Spring Terrace, Richmond-upon-Thames, London TW9.

Associated Monuments - None recorded

Event ID: ELO18003 **Name:** Marchmont Road (Nos.2-6) London Borough of Richmond Upon Thames:

Event ID	Event Name	Event Type
ELO18003	Marchmont Road (Nos.2-6) London Borough of Richmond Upon Thames: Desk Based Assessment	Backlog Report

External Reference:

Dates: 01/11/2015 - 30/11/2015, at some time (2015)

Project Details:

Event/Activity Types - None recorded

Thesaurus Event Types

DESK BASED ASSESSMENT

Event/Activity References - None recorded

Organisation: RPS Planning & Development

Associated Individuals

Cakebread, Stuart - Historic England	Compiler
Cakebread, Stuart - Historic England	GIS Record Created
Seakins, Rebecca - Greater London Archaeology Advisory Service	GIS Record Revised
Seakins, Rebecca - Greater London Archaeology Advisory Service	Reviser

Associated Organisations

Greater London Archaeology Advisory Service	GIS Record Revised
Greater London Archaeology Advisory Service	Reviser
Greater London Archaeology Advisory Service	GIS Record Created
Greater London Archaeology Advisory Service	Compiler
RPS Planning & Development	Author

Location

2-6 Marchmont Road
Richmond

Grid Reference

Centred TQ 1855 7470 (54m by 72m) TQ17SE Area

Administrative Areas

Borough RICHMOND UPON THAMES

Address

2-6 Marchmont Road, Richmond, Greater London

Description and Sources

Description

In November 2015 RPS compiled a heritage statement for the site known as 2-6 Marchmont Road.

It was concluded that as no archaeological remains have been identified on or adjacent to the site the significance of any potential archaeological remains is thought to be negligible. It was also concluded that the proposed development would have no impact on any nearby listed buildings or locally listed buildings. The key or strategic views of the Conservation Area will also not be impacted while the construction of a new terrace of buildings is thought to be a moderate to major gain for the Conservation Area.

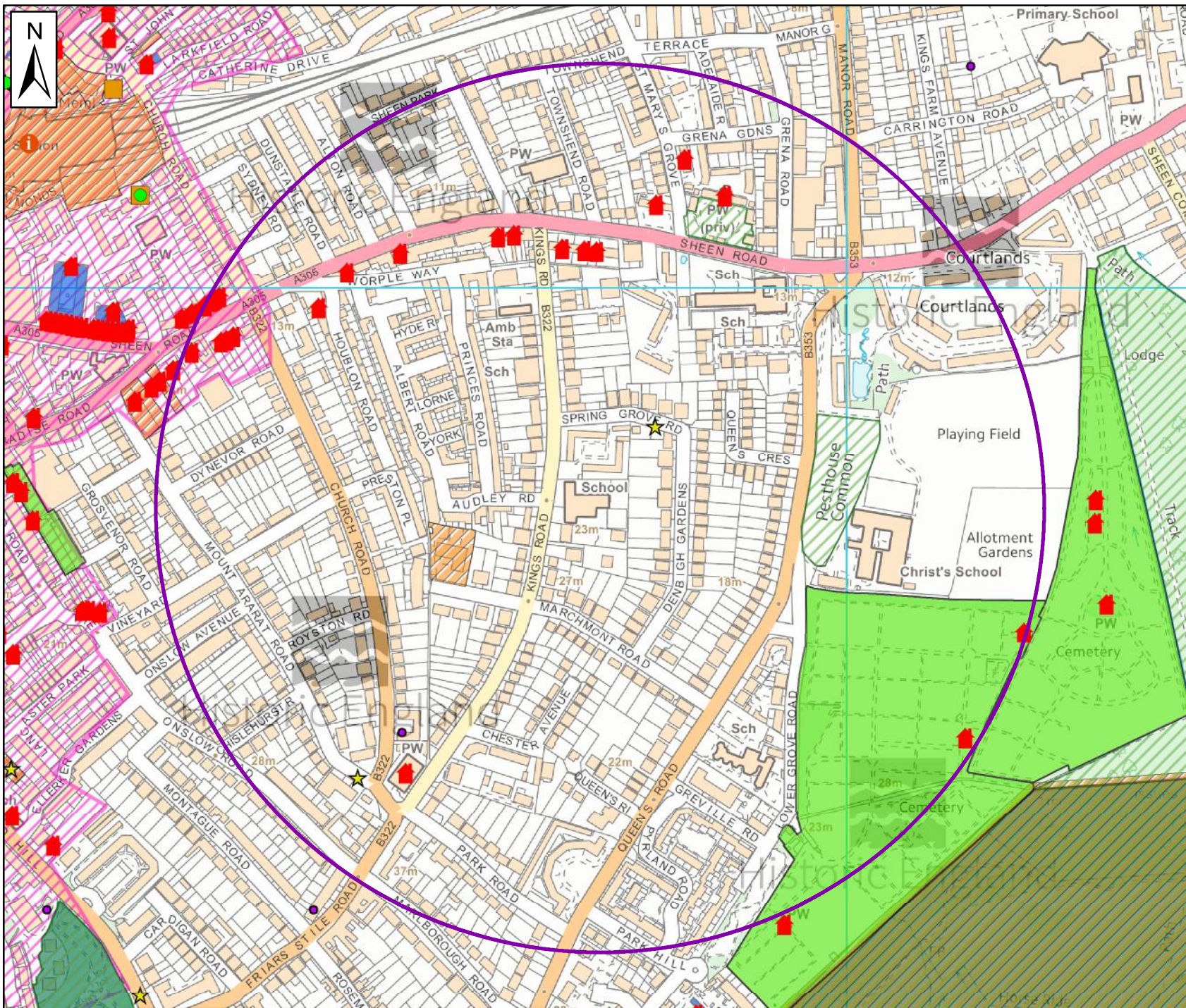
Sources

Digital Report: RPS. 2016. 2-6 Marchmont Road, Richmond upon Thames Heritage Statement Archaeology & Heritage Baseline & Impact Assessment.

Associated Monuments - None recorded

Event ID: ELO18003

Name: Marchmont Road (Nos.2-6) London Borough of Richmond Upon Thames:



GLHER Report 15969
 Kings House School
 TQ 18723 74753
 500m radius search

11 December 2020

- Archaeology
- ★ Archaeological Find Spot
- ◊ Building 🏠 Listed Building
- ⊙ TDP & TAS
- 🏹 Maritime Archaeology
- ▭ Registered Parks & Gardens
- ▭ Scheduled Ancient Monuments
- ▨ World Heritage Sites
- ▭ Archaeological Priority Area
- ◻ Event Location
- ◻ Event Location (Not fully recorded on the GLHER database)
- ◻ Requested Search Area

Scale (at A4): 1:6,000

This map is based upon Ordnance Survey material with the permission of Ordnance Survey on behalf of the Controller of Her Majesty's Stationery Office. © Crown Copyright. Unauthorised reproduction infringes Crown Copyright and may lead to prosecution or civil proceedings. Historic England, 100019088. © Historic England, Historic OS Mapping: © and database right Crown Copyright and Landmark Information Group Ltd (all rights reserved) Licence numbers 000394 and TP0024.

Notes:
 Any Listed Building information shown on this map extract is provided solely to indicate the location of the listed building(s) and does not attempt to indicate the curtilage or the full extent of the listing(s). Any archaeological priority area(s) shown on this map extract are those used by the Historic England archaeological advisors and there may be minor differences when compared to the relevant UDP or LDF.

Cannon Bridge House, 25 Dowgate Hill,
 London EC4R 2YA
 Tel: 020 7973 3000 Fax: 020 7973 3001
 www.HistoricEngland.org.uk

Greater London Monument Full Report

11/12/2020

Number of records: 26

GLHER Report 15969 S Ref. 11158, Kings House School Re-submission TQ 18723 74753 500m radius search Monuments

HER Number	Site Name	Record Type
021045/00/00 - MLO191	1 DENBIGH GDNS	Find Spot

Monument Types and Dates

FINDSPOT (Roman - 43 AD to 409 AD)

Description and Sources

Description

17 COINS AD70-400, IN PRIVATE POSSESSION. MOLLM AG MENTIONS THESE AS HAVING BEEN FOUND BETWEEN 1960 & 66 THEREFORE QUESTIONABLE AS A DISCREET HOARD

Museum of London, *MOLLM AG* (Unpublished document). SLO34333.

South West London Archaeological Unit, *SMR CARD* (Unpublished document). SLO34332.

Sources

Unpublished document: Museum of London. MOLLM AG. F 264.

Unpublished document: South West London Archaeological Unit. SMR CARD. F198 (RICHMOND).

Associated resources - None recorded

Location

National Grid Reference

TQ 1878 7484 (point) TQ17SE Point

Administrative Areas

Borough RICHMOND UPON THAMES

Address/Historic Names

1 DENBIGH GDNS

Designations, Statuses and Scorings

Associated Designations - None recorded

Other Statuses and Cross-References

Site of Archaeological Interest - Y Active

Historic Environment Record - 021045/00/00 Active

SHINE Candidate (Unlikely) Active

Ratings and Scorings - None recorded

Land Use

Associated Historic Landscape Character Records - None recorded

Other Land Classes - None recorded

Related Monuments - None Recorded

Associated Finds

FLO5195 COIN (Roman - 43 AD to 409 AD)

FLO5196 COIN HOARD (Roman - 43 AD to 409 AD)

Associated Events/Activities - None recorded

Associated Individuals/Organisations - None recorded

HER Number MLO91402

Site Name 131 Sheen Road

HER Number	Site Name	Record Type
MLO91402	131 Sheen Road	Listed Building

Record created from imported Listed Buildings On-line dataset 11-Jan-2006; see linked Designation record for full details

Monument Types and Dates

HOUSE (Georgian to Hanoverian - 1800 AD to 1832 AD)

Description and Sources

Description

1. 5028	SHEEN ROAD	(south side)
Nos 131 and 133 TQ 1875 11/13	24.12.68	
II		
2. Early C19, 2-storey houses, each 2 windows wide. Slate roofs to eaves. Stucco facades with trellis porches to entrance doors. Large square headed sash windows. Listing NGR: TQ1860875058		

Sources - None recorded

Associated resources - None recorded

Location

National Grid Reference

TQ 18608 75058 (point)	TQ17NE	Point
------------------------	--------	-------

Administrative Areas

Borough	RICHMOND UPON THAMES
---------	----------------------

Address/Historic Names

131 Sheen Road, Richmond, Surrey, TW9 1YJ

131 Sheen Road, Richmond, Surrey, TW9 1YJ

133 Sheen Road, Richmond, Surrey, TW9 1YJ

Designations, Statuses and Scorings

Associated Designations

Listed Building (II) - 435852	Active	DLO26399
-------------------------------	--------	----------

Other Statuses and Cross-References

SHINE Candidate (Unlikely)	Active
----------------------------	--------

Ratings and Scorings - None recorded

Land Use

Associated Historic Landscape Character Records - None recorded

Other Land Classes - None recorded

Related Monuments - None Recorded

Finds - None recorded

Associated Events/Activities - None recorded

Associated Individuals/Organisations - None recorded

HER Number MLO91231

Site Name 149 Sheen Road

HER Number	Site Name	Record Type
MLO91231	149 Sheen Road	Listed Building

Record created from imported Listed Buildings On-line dataset 11-Jan-2006; see linked Designation record for full details

Monument Types and Dates

HOUSE (Georgian to Hanoverian - 1800 AD to 1832 AD)

STEPS (Georgian to Hanoverian - 1800 AD to 1832 AD)

Description and Sources

Description

1. 5028 SHEEN ROAD (south side)
Nos 149 and 151 TQ 1875 11/15 24.12.68

II

2. Early C19 pair of 2-storey houses with basement, and attic. Stuccoed. Each 2 windows wide, plus a single storey side extension now with basement garage. Stuccoed with band courses, window surrounds and pilastered door surround. Each house has a separate pedimented gable with one attic window. Iron window guards to ground floor and stone steps to entrance doors, with original handrails.

Listing NGR: TQ1868075045

Sources - None recorded

Associated resources - None recorded

Location

National Grid Reference

TQ 18679 75045 (point) TQ17NE Point

Administrative Areas

Borough RICHMOND UPON THAMES

Address/Historic Names

149 Sheen Road, Richmond, Surrey, TW9 1YS

149 Sheen Road, Richmond, Surrey, TW9 1YS

151 Sheen Road, Richmond, Surrey, TW9 1YS

Designations, Statuses and Scorings

Associated Designations

Listed Building (II) - 435917 Active DLO26228

Other Statuses and Cross-References

SHINE Candidate (Unlikely) Active

Ratings and Scorings - None recorded

Land Use

Associated Historic Landscape Character Records - None recorded

Other Land Classes - None recorded

Related Monuments - None Recorded

Finds - None recorded

Associated Events/Activities - None recorded

HER Number MLO91231

Site Name 149 Sheen Road

Associated Individuals/Organisations - None recorded

HER Number MLO91232

Site Name 155 Sheen Road

HER Number	Site Name	Record Type
MLO91232	155 Sheen Road	Listed Building

Record created from imported Listed Buildings On-line dataset 11-Jan-2006; see linked Designation record for full details

Monument Types and Dates

HOUSE (Georgian to Hanoverian - 1800 AD to 1832 AD)

STEPS (Georgian to Hanoverian - 1800 AD to 1832 AD)

Description and Sources

Description

1. 5028 SHEEN ROAD (south side)
Nos 153 and 155 TQ 1875 11/16 24.12.68

II

2. Early C19 pair of 3-storey houses with basements, each 2 windows wide. Stuccoed with continuous parapet cornice. Stucco entablatures and pilasters to entrance doors: stone steps. A canted bay to each house at ground floor level with iron window guards. No 153 has a one window wide side extension on basement and ground floor levels. Windows to first floor have moulded surrounds. Sashes.

Listing NGR: TQ1870575043

Sources - None recorded

Associated resources - None recorded

Location

National Grid Reference

TQ 18705 75043 (point) TQ17NE Point

Administrative Areas

Borough RICHMOND UPON THAMES

Address/Historic Names

153 Sheen Road, Richmond, Surrey, TW9 1YS

155 Sheen Road, Richmond, Surrey, TW9 1YS

155 Sheen Road, Richmond, Surrey, TW9 1YS

Designations, Statuses and Scorings

Associated Designations

Listed Building (II) - 435918 Active DLO26229

Other Statuses and Cross-References

SHINE Candidate (Unlikely) Active

Ratings and Scorings - None recorded

Land Use

Associated Historic Landscape Character Records - None recorded

Other Land Classes - None recorded

Related Monuments - None Recorded

Finds - None recorded

Associated Events/Activities - None recorded

HER Number MLO91232

Site Name 155 Sheen Road

Associated Individuals/Organisations - None recorded

HER Number MLO91233

Site Name 36 Sheen Road

HER Number	Site Name	Record Type
MLO91233	36 Sheen Road	Listed Building

Record created from imported Listed Buildings On-line dataset 11-Jan-2006; see linked Designation record for full details

Monument Types and Dates

BOUNDARY WALL (Hanoverian to Victorian - 1833 AD to 1866 AD)

GATE PIER (Hanoverian to Victorian - 1833 AD to 1866 AD)

HOUSE (Hanoverian to Victorian - 1833 AD to 1866 AD)

RAILINGS (Hanoverian to Victorian - 1833 AD to 1866 AD)

Description and Sources

Description

1. 5028 SHEEN ROAD (south side)
Nos 157 and 159, boundary walls and piers TQ 1875 11/17
II

2. Mid C19 pair of 2-storey houses over raised basement, each 2 windows wide with entrances opposed. Slate roofs with deep eaves. Brick with stucco facades having a band course at first floor cill level. Moulded surrounds to windows and flat surrounds and cornice hoods to entrance doors. Railings to entrance door and iron window guards of similar pattern to ground floor windows. Brick front boundary walls and piers.

Listing NGR: TQ1871975042

Sources - None recorded

Associated resources - None recorded

Location

National Grid Reference

TQ 18719 75042 (point) TQ17NE Point

Administrative Areas

Borough RICHMOND UPON THAMES

Address/Historic Names

36 Sheen Road, Richmond, Surrey, TW9 1AW

Designations, Statuses and Scorings

Associated Designations

Listed Building (II) - 435919 Active DLO26230

Other Statuses and Cross-References

SHINE Candidate (Unlikely) Active

Ratings and Scorings - None recorded

Land Use

Associated Historic Landscape Character Records - None recorded

Other Land Classes - None recorded

Related Monuments - None Recorded

Finds - None recorded

Associated Events/Activities - None recorded

Associated Individuals/Organisations - None recorded

HER Number MLO91236

Site Name 38 Sheen Road

HER Number	Site Name	Record Type
MLO91236	38 Sheen Road	Listed Building

Record created from imported Listed Buildings On-line dataset 11-Jan-2006; see linked Designation record for full details

Monument Types and Dates

HOUSE (Georgian - 1733 AD to 1799 AD)

Description and Sources

Description - None recorded

Sources - None recorded

Associated resources - None recorded

Location

National Grid Reference

TQ 18277 74980 (point) TQ17SE Point

Administrative Areas

Borough RICHMOND UPON THAMES

Address/Historic Names

38 Sheen Road, Richmond, Surrey, TW9 1AW

Designations, Statuses and Scorings

Associated Designations

Archaeological Priority Area (APA) - DLO33468	Richmond	Active	DLO33468
Listed Building (II) - 435922		Active	DLO26233

Other Statuses and Cross-References

SHINE Candidate (Unlikely)	Active
----------------------------	--------

Ratings and Scorings - None recorded

Land Use

Associated Historic Landscape Character Records - None recorded

Other Land Classes - None recorded

Related Monuments - None Recorded

Finds - None recorded

Associated Events/Activities - None recorded

Associated Individuals/Organisations - None recorded

HER Number MLO91227

Site Name 43 Sheen Road

HER Number	Site Name	Record Type
MLO91227	43 Sheen Road	Listed Building

Record created from imported Listed Buildings On-line dataset 11-Jan-2006; see linked Designation record for full details

Monument Types and Dates

RAILINGS (Stuart to Unknown - 1700 AD)
HOUSE (Stuart to Georgian - 1700 AD to 1732 AD)
STEPS (Stuart to Georgian - 1700 AD to 1732 AD)

Description and Sources

Description - None recorded

Sources - None recorded

Associated resources - None recorded

Location

National Grid Reference

TQ 18302 74942 (point) TQ17SE Point

Administrative Areas

Borough RICHMOND UPON THAMES

Address/Historic Names

43 Sheen Road, Richmond, Surrey, TW9 1AJ

Designations, Statuses and Scorings

Associated Designations

Archaeological Priority Area (APA) - DLO33468	Richmond	Active	DLO33468
---	----------	--------	----------

Listed Building (II) - 435848		Active	DLO26224
-------------------------------	--	--------	----------

Other Statuses and Cross-References

SHINE Candidate (Unlikely)	Active
----------------------------	--------

Ratings and Scorings - None recorded

Land Use

Associated Historic Landscape Character Records - None recorded

Other Land Classes - None recorded

Related Monuments - None Recorded

Finds - None recorded

Associated Events/Activities - None recorded

Associated Individuals/Organisations - None recorded

HER Number MLO91228

Site Name 69 Sheen Road

HER Number	Site Name	Record Type
MLO91228	69 Sheen Road	Listed Building

Record created from imported Listed Buildings On-line dataset 11-Jan-2006; see linked Designation record for full details

Monument Types and Dates

TIMBER FRAMED HOUSE (Stuart to Hanoverian - 1700 AD to 1832 AD)

Description and Sources

Description

1. 5028 SHEEN ROAD (south side)
No 69 TQ 1875 11/11
II GV
2. C18 or early C19, 2-storey cottage, brick built ground floor with timber framed upper floor stuccoed to road, weatherboarded to sides, having a pantiled hipped roof. One window wide to street frontage. Flush framed sash window retaining glazing bars. Modern window below.
Listing NGR: TQ1843875018

Sources - None recorded

Associated resources - None recorded

Location

National Grid Reference

TQ 18438 75017 (point) TQ17NE Point

Administrative Areas

Borough RICHMOND UPON THAMES

Address/Historic Names

69 Sheen Road, Richmond, Surrey, TW9 1YJ

Designations, Statuses and Scorings

Associated Designations

Listed Building (II) - 435850 Active DLO26225

Other Statuses and Cross-References

SHINE Candidate (Unlikely) Active

Ratings and Scorings - None recorded

Land Use

Associated Historic Landscape Character Records - None recorded

Other Land Classes - None recorded

Related Monuments - None Recorded

Finds - None recorded

Associated Events/Activities - None recorded

Associated Individuals/Organisations - None recorded

HER Number MLO91230

Site Name BELVEDERE PLACE

HER Number	Site Name	Record Type
MLO91230	BELVEDERE PLACE	Listed Building

Record created from imported Listed Buildings On-line dataset 11-Jan-2006; see linked Designation record for full details

Monument Types and Dates

HOUSE (Georgian to Hanoverian - 1800 AD to 1832 AD)

Description and Sources

Description

1. 5028 SHEEN ROAD (south side)
Nos 135 to 141 (odd) (Belvedere Place) TQ 1875 11/14 24.12.68
II

2. Early C19. Two storey houses, each 2 windows wide. Slate roofs, brick built with parapets and ground floors stuccoed. Nos 137 and 139 have modern dormer windows and No 135 has C19 dormers. Entrance doors and ground floor windows have semi-circular head. Upper windows square gauged brick heads. Sash windows retaining glazing bars.
Listing NGR: TQ1862675060

Sources - None recorded

Associated resources - None recorded

Location

National Grid Reference

TQ 18626 75059 (point) TQ17NE Point

Administrative Areas

Borough RICHMOND UPON THAMES

Address/Historic Names

36 Sheen Road, Richmond, Surrey, TW9 1AW

Designations, Statuses and Scorings

Associated Designations

Listed Building (II) - 435853	BELVEDERE PLACE	Active	DLO26227
-------------------------------	-----------------	--------	----------

Other Statuses and Cross-References

SHINE Candidate (Unlikely)	Active
----------------------------	--------

Ratings and Scorings - None recorded

Land Use

Associated Historic Landscape Character Records - None recorded

Other Land Classes - None recorded

Related Monuments - None Recorded

Finds - None recorded

Associated Events/Activities - None recorded

Associated Individuals/Organisations - None recorded

HER Number MLO91146

Site Name CHALOM HOUSE AND SPRING TERRACE

HER Number	Site Name	Record Type
MLO91146	CHALOM HOUSE AND SPRING TERRACE	Listed Building

Record created from imported Listed Buildings On-line dataset 11-Jan-2006; see linked Designation record for full details

Monument Types and Dates

TERRACED HOUSE (Georgian - 1767 AD to 1799 AD)

Description and Sources

Description - None recorded

Sources - None recorded

Associated resources - None recorded

Location

National Grid Reference

TQ 18262 74927 (point) TQ17SE Point

Administrative Areas

Borough RICHMOND UPON THAMES

Address/Historic Names - None recorded

Designations, Statuses and Scorings

Associated Designations

Archaeological Priority Area (APA) - DLO33468	Richmond	Active	DLO33468
---	----------	--------	----------

Listed Building (II) - 205595	CHALOM HOUSE AND SPRING TERRACE	Active	DLO26143
-------------------------------	---------------------------------	--------	----------

Other Statuses and Cross-References

SHINE Candidate (Unlikely)	Active
----------------------------	--------

Ratings and Scorings - None recorded

Land Use

Associated Historic Landscape Character Records - None recorded

Other Land Classes - None recorded

Related Monuments - None Recorded

Finds - None recorded

Associated Events/Activities - None recorded

Associated Individuals/Organisations - None recorded

HER Number MLO91003

Site Name CHURCH OF ST MATTHIAS

HER Number	Site Name	Record Type
MLO91003	CHURCH OF ST MATTHIAS	Listed Building

Record created from imported Listed Buildings On-line dataset 11-Jan-2006; see linked Designation record for full details

Monument Types and Dates

CHURCH (Victorian - 1858 AD)

Description and Sources

Description

1. 5028 KING'S ROAD
Church of St Matthias (at corner of Church Road
and Mount Ararat Road) TQ 1874 24/34 10.1.50
II

2. 1858 by Sir G G Scott. North-west tower with tall spire. Ragstone. Gothic; nave and aisles, lancet clerestorey; chancel and apse. Wheel window over entrance porch. Impressive tower with buttressed base stage, angle buttresses above; tall, traceried belfry windows (a pair on each side). Traceried parapet and tall octagonal broach spire.
Listing NGR: TQ1850474455

Sources - None recorded

Associated resources - None recorded

Location

National Grid Reference

TQ 18504 74455 (point) TQ17SE Point

Administrative Areas

Borough RICHMOND UPON THAMES

Address/Historic Names - None recorded

Designations, Statuses and Scorings

Associated Designations

Listed Building (II) - 205537	CHURCH OF ST MATTHIA'S	Active	DLO25986
-------------------------------	------------------------	--------	----------

Other Statuses and Cross-References

SHINE Candidate (Unlikely)	Active
----------------------------	--------

Ratings and Scorings - None recorded

Land Use

Associated Historic Landscape Character Records - None recorded

Other Land Classes - None recorded

Related Monuments - None Recorded

Finds - None recorded

Associated Events/Activities - None recorded

Associated Individuals/Organisations - None recorded

HER Number MLO91077

Site Name COURT LODGE

HER Number	Site Name	Record Type
MLO91077	COURT LODGE	Listed Building

Record created from imported Listed Buildings On-line dataset 11-Jan-2006; see linked Designation record for full details

Monument Types and Dates

HOUSE (Georgian to Hanoverian - 1800 AD to 1832 AD)

Description and Sources

Description - None recorded

Sources - None recorded

Associated resources - None recorded

Location

National Grid Reference

TQ 18296 74939 (point) TQ17SE Point

Administrative Areas

Borough RICHMOND UPON THAMES

Address/Historic Names

41 Sheen Road, Richmond, Surrey, TW9 1AJ

Designations, Statuses and Scorings

Associated Designations

Archaeological Priority Area (APA) - DLO33468	Richmond	Active	DLO33468
Listed Building (II) - 435847	COURT LODGE	Active	DLO26074

Other Statuses and Cross-References

SHINE Candidate (Unlikely)	Active
----------------------------	--------

Ratings and Scorings - None recorded

Land Use

Associated Historic Landscape Character Records - None recorded

Other Land Classes - None recorded

Related Monuments - None Recorded

Finds - None recorded

Associated Events/Activities - None recorded

Associated Individuals/Organisations - None recorded

HER Number MLO91229

Site Name DUNSTABLE ROAD

HER Number	Site Name	Record Type
MLO91229	DUNSTABLE ROAD	Listed Building

Record created from imported Listed Buildings On-line dataset 11-Jan-2006; see linked Designation record for full details

Monument Types and Dates

HOUSE (Georgian - 1767 AD to 1799 AD)

HOUSE (Georgian to Unknown - 1800 AD)

Description and Sources

Description

1. 5028 SHEEN ROAD (south side)
No 93. TQ 1875 11/12 10.1.50 (Dunstable House)

II

2. Late C18 house. Brick built; parapet, central part 3-storeys high with basement: 5 windows wide with central Doric pedimented doorcase. Windows have flat gauged heads with sashes. Later 2-storey wings to either side, that to right much smaller, and earlier than that to left. Internally, much altered and extended at the rear.

Listing NGR: TQ1849875040

Sources - None recorded

Associated resources - None recorded

Location

National Grid Reference

TQ 18497 75039 (point) TQ17NE Point

Administrative Areas

Borough RICHMOND UPON THAMES

Address/Historic Names

93 Sheen Road, Richmond, Surrey, TW9 1YJ

Designations, Statuses and Scorings

Associated Designations

Listed Building (II) - 435851 DUNSTABLE ROAD Active DLO26226

Other Statuses and Cross-References

SHINE Candidate (Unlikely) Active

Ratings and Scorings - None recorded

Land Use

Associated Historic Landscape Character Records - None recorded

Other Land Classes - None recorded

Related Monuments - None Recorded

Finds - None recorded

Associated Events/Activities - None recorded

Associated Individuals/Organisations - None recorded

HER Number MLO91238

Site Name HICKEY'S ALMSHOUSES

HER Number	Site Name	Record Type
MLO91238	HICKEY'S ALMSHOUSES	Listed Building

Record created from imported Listed Buildings On-line dataset 11-Jan-2006; see linked Designation record for full details

Monument Types and Dates

ALMSHOUSE (Victorian - 1851 AD)

Description and Sources

Description

1. 5028 ST MARY'S GROVE off Sheen Road
Hickey's Almshouses TQ 1875 11/20
II GV

2. 1851, later block in the same style as the main quadrangle. Eight windows plus 4 doors wide. Two storeys.
Listing NGR: TQ1881875146

Sources - None recorded

Associated resources - None recorded

Location

National Grid Reference

TQ 18818 75146 (point) TQ17NE Point

Administrative Areas

Borough RICHMOND UPON THAMES

Address/Historic Names - None recorded

Designations, Statuses and Scorings

Associated Designations

Listed Building (II) - 435928 HICKEY'S ALMSHOUSES Active DLO26235

Other Statuses and Cross-References

SHINE Candidate (Unlikely) Active

Ratings and Scorings - None recorded

Land Use

Associated Historic Landscape Character Records - None recorded

Other Land Classes - None recorded

Related Monuments - None Recorded

Finds - None recorded

Associated Events/Activities - None recorded

Associated Individuals/Organisations - None recorded

HER Number MLO91400

Site Name HICKEYS ALMSHOUSES, INCLUDING CHAPEL AND LODGES

HER Number	Site Name	Record Type
MLO91400	HICKEYS ALMSHOUSES, INCLUDING CHAPEL AND LODGES	Listed Building

Record created from imported Listed Buildings On-line dataset 11-Jan-2006; see linked Designation record for full details

Monument Types and Dates

ALMSHOUSE (Hanoverian - 1834 AD)

CHAPEL (Hanoverian - 1834 AD)

COURTYARD (Hanoverian - 1834 AD)

GATEHOUSE (Hanoverian - 1834 AD)

HOUSE (Hanoverian - 1834 AD)

RAILINGS (Hanoverian - 1834 AD)

Description and Sources

Description

1. 5028	SHEEN ROAD	
Hickeys Almshouses, Lodges TQ 1875 11/18 II*	10.1.50	including Chapel and

2. 1834 by Vulliamy. Grey brick, stone dressings, slate pitched roofs. Tudor Gothick style. Consists of central and flanking ranges, gatehouse and caretaker's house. Two-storeyed buildings arranged around an open courtyard. Central block dominated by central chapel, with perpendicular Gothic window above entrance, and stepped gable above with ogee-domed bellcote finial, and pinnacles. To either side of chapel and adjoining, almshouses 6-bays wide plus 2 double Tudor arched doors. End bays gabled and project slightly. Tripartite mullioned windows with leaded lights and dripstones, the central lights under the gables breaking upward. Eaves, except to gables, which have parapets. Prominent Tudor style chimneys. Side blocks each of 4 bays plus central double doorway. Joined to central block by Tudor arched doorways with stepped gables. Arcaded cloister to far side of outer blocks. Two-storeyed gatehouse with 2 bay wings flanking central archway. Similar details. Polygonal buttresses to corners some with ogee domed finials. Castellated parapet. Custodians house of 2 bays, steep pitched roof, and similar details. Railings to either side of gatehouse, joining with cloisters to completely enclose the site. Cast-iron with quatrefoils and castellated brick piers.
Listing NGR: TQ1886375104

Sources - None recorded

Associated resources - None recorded

Location

National Grid Reference

TQ 18863 75104 (point)	TQ17NE	Point
------------------------	--------	-------

Administrative Areas

Borough	RICHMOND UPON THAMES
---------	----------------------

Address/Historic Names

36 Sheen Road, Richmond, Surrey, TW9 1AW

Designations, Statuses and Scorings

Associated Designations

Listed Building (II*) - 435927	HICKEYS ALMSHOUSES, INCLUDING CHAPEL AND LODGES	Active	DLO26397
--------------------------------	---	--------	----------

Other Statuses and Cross-References

SHINE Candidate (Unlikely)	Active
----------------------------	--------

Ratings and Scorings - None recorded

Land Use

Associated Historic Landscape Character Records - None recorded

HER Number MLO91400

Site Name HICKEYS ALMSHOUSES, INCLUDING CHAPEL AND
LODGES

Other Land Classes - None recorded

Related Monuments

MLO102890 Sheen Road [Hickey's Almshouses Garden], Hierarchical
Richmond TW10 {Private garden belonging to
almshouses}

Finds - None recorded

Associated Events/Activities - None recorded

Associated Individuals/Organisations - None recorded

HER Number	Site Name	Record Type
MLO91289	HOUBLON'S ALMSHOUSES	Listed Building

Record created from imported Listed Buildings On-line dataset 11-Jan-2006; see linked Designation record for full details

Monument Types and Dates

ALMSHOUSE (Georgian - 1757 AD to 1758 AD)

Description and Sources

Description

In the entry for WORPLE WAY 24/12 Houblon' s
 Almshouses The grade shall be amended to read II*.

1. 5028 WORPLE WAY
 Houblon's Almshouses TQ 1874 24/12 10.1.50
 II

2. 1757-1758. A range of three 2-storey blocks of buildings around 3 sides of a square. Tiled roofs. Brown brick with brick eaves cornice. Brick band at first floor level. Two-light sash windows under segmental arches. Doors also segmental arches, with gabled porches on brackets. Pedimented entrance bay carries inscription: "These almshouses were erected and endowed by Mrs Rebecca and Mrs Susannah Houtlon 1758".

Listing NGR: TQ1840674978

Sources - None recorded

Associated resources - None recorded

Location

National Grid Reference

TQ 18406 74978 (point) TQ17SE Point

Administrative Areas

Borough RICHMOND UPON THAMES

Address/Historic Names - None recorded

Designations, Statuses and Scorings

Associated Designations

Listed Building (II) - 436175 HOUBLON'S ALMSHOUSES Active DLO26286

Other Statuses and Cross-References

SHINE Candidate (Unlikely) Active

Ratings and Scorings - None recorded

Land Use

Associated Historic Landscape Character Records - None recorded

Other Land Classes - None recorded

Related Monuments - None Recorded

Finds - None recorded

Associated Events/Activities - None recorded

Associated Individuals/Organisations - None recorded

HER Number MLO1889 **Site Name** Lower Grove Road [Richmond Cemetery] Richmond, TW10
{19th century cemetery}

HER Number	Site Name	Record Type
MLO1889	Lower Grove Road [Richmond Cemetery] Richmond, TW10 {19th century cemetery}	Monument

A 19th century cemetery which was enlarged three times between 1871 and 1902. It contains a pair of chapels and a pair of war memorials.

Monument Types and Dates

CEMETERY (Victorian to 21st Century - 1853 AD to 2050 AD)

Evidence DESIGNED LANDSCAPE

CEMETERY LODGE (Victorian to 21st Century - 1853 AD? to 2050 AD)

Evidence EXTANT BUILDING

NONCONFORMIST CHAPEL (Victorian to 21st Century - 1870 AD to 2050 AD)

Evidence EXTANT BUILDING

CEMETERY CHAPEL (Victorian to 21st Century - 1875 AD to 2050 AD)

Evidence EXTANT BUILDING

Main Building RAGSTONE

Material

Description and Sources

Description

Richmond Cemetery was founded in 1853 and is located off Lower Grove Road. The cemetery originally had two Gothic style chapel, constructed in the 1870's. The non conformist chapel has heavy plate tracery and sculpted decoration. In 1982, this chapel was purchased by a private buyer. In 1985 it was threatened with demolition but was restored in the 1990's and remains in private ownership, though since the repositioning of the gates, it is now technically outside the cemetery. The Church of England chapel was designed by Sir Arthur Blomfield in 1875 and is built in squared hammer-dressed Kentish ragstone with Bath stone bands and a buttressed gable front. This chapel was also restored in the 1990's. The cemetery was enlarged in 1873 and again in 1898 and 1902. (1, 7, 8)

There are two large memorials in the cemetery: one dating to 1915 commemorating South African soldiers killed during the First World War (MLO103547), and one built in the 1950's to commemorate servicemen who have died in the Royal Star & Garter home in Richmond (MLO103845). (1)

In the 18th century King George III had a farm to the west of East Sheen Common near the parish boundary and King's Ride recalls the route from Kew Palace to the farm and Richmond Park. The oldest part of Richmond Cemetery has mature trees, a decayed gothic chapel in the cemetery itself and a restored gothic chapel at the entrance gate. There are many interesting tombs and the site was rural and picturesque, not unlike Highgate Cemetery (q.v.), albeit on a much smaller scale. Present day management techniques have allowed brambles to proliferate and obscure many of the historic tombs. Parallel to the eastern boundary wall is a lower wall, and between the two is a strip of land or 'deer leap' of the adjacent Richmond Park (q.v.), created to safeguard the park boundaries.

King George III apparently provided 0.6 hectares (1.5 acres) for burial purposes in 1786, and to the south-west, and separated from the burial plot by open ground, was the workhouse of 1786 with the inscription over the main entrance that it was provided 'by the munificence of H M King George III'. The OS Map of 1865 shows the cemetery as a simple square plot divided into four squares by footpaths. The OS Map of 1879 shows the site between the original plot and the workhouse laid out on a grid, and by 1893-94 another new extension was in existence to the north, also laid out on a grid. The OS Map of 1893/4 no longer shows the 18th century layout of footpaths in the original burial plot although these partially reappear on subsequent maps.

Richmond Cemetery had two gothic chapels: the nonconformist ragstone chapel in Early English Gothic style and to the south of this is the C of E chapel, designed by Sir Arthur Blomfield in 1875. The nonconformist chapel is in private ownership and was restored in the 1990s, now outside the entrance gate on Grove Road following repositioning of the gates. The Anglican chapel is also gothic in style constructed in squared hammer-dressed Kentish ragstone with Bath stone bands and enrichments, with a buttressed gable front, the entrance inscribed with the words: 'In the Garden was a new sepulchre, there laid they Jesus'. By the 1990s the chapel was in a poor state of repair and used as a tool store, but since restored and very little of the grid pattern of paths was visible by the mid 1990s, the cemetery much overgrown with brambles.

Interesting tombs include engraver William Harvey's granite tomb of 1866 lying at a steep angle with an incised palette on top of one of the sides. Among those buried here is Mary Elizabeth Braddon (1837-1915), a prolific popular novelist of the 'sensationalist' school, admired by Queen Victoria, whose best-known novel, 'Lady Audley's Secret' began serialisation in 1862 in the Robin Goodfellow Magazine and then the Sixpenny Magazine. She lived in Lichfield House, Sheen Road with John Maxwell, publisher, who she married in 1874; he invested in property in the King's Road area of Richmond and named certain streets after characters in her novels including Marchmont Road and Audley Road. Lichfield House was demolished and the 1930s block of flats on the site of the house remain today.

HER Number MLO1889

Site Name Lower Grove Road [Richmond Cemetery] Richmond, TW10
{19th century cemetery}

Sources consulted:

Hugh Meller & Brian Parsons, 'London Cemeteries, An Illustrated Guide and Gazetteer', 4th edition (The History Press, 2008);
Bridget Cherry & Nikolaus Pevsner, 'The Buildings of England: London 2: South' (Penguin) 1999; John Archer, David Curson,
'Nature Conservation in Richmond upon Thames, Ecology Handbook 21', (London Ecology Unit) 1993 p81 (8)

- <1> **Meller, H.**, 1985, *London Cemeteries: An Illustrated Guide and Gazetteer*, p 246-250 (Monograph). SLO10245.
- <2> **RICHMOND CEMETERY PAPERS** (Unpublished document). SLO3010.
- <3> **Ordnance Survey**, 1869 - 1880, *Ordnance Survey 1st Edition Map Surrey 25in* (Published map/plan). SLO79376.
- <4> **Ordnance Survey**, 1891-1912, *Ordnance Survey 25 in Second Edition - Surrey* (Published map/plan). SLO79377.
- <5> **Ordnance Survey**, 1904 - 1939, *Ordnance Survey 25in Third Edition -Surrey* (Published map/plan). SLO79378.
- <6> **Ordnance Survey**, 1919-39, *Ordnance Survey 25in Fourth Edition -Surrey* (Published map/plan). SLO80760.
- <7> **PEVSNER, N. & CHERRY, B.**, *The Buildings of England. London 2: South, Richmond Cemetery* (Monograph). SLO68.
- <8> **London Parks and Gardens Trust**, 2007, *London Parks and Gardens Trust Site Database, Richmond Cemetery* (Website). SLO78826.

Sources

- (1) Monograph: Meller, H.. 1985. London Cemeteries: An Illustrated Guide and Gazetteer. p 246-250
- (2) Unpublished document: RICHMOND CEMETERY PAPERS. DWOP R50.
- (3) Published map/plan: Ordnance Survey. 1869 - 1880. Ordnance Survey 1st Edition Map Surrey 25in.
- (4) Published map/plan: Ordnance Survey. 1891-1912. Ordnance Survey 25 in Second Edition - Surrey.
- (5) Published map/plan: Ordnance Survey. 1904 - 1939. Ordnance Survey 25in Third Edition -Surrey.
- (6) Published map/plan: Ordnance Survey. 1919-39. Ordnance Survey 25in Fourth Edition -Surrey.
- (7) Monograph: PEVSNER, N. & CHERRY, B.. The Buildings of England. London 2: South. Richmond Cemetery
- (8) Website: London Parks and Gardens Trust. 2007. London Parks and Gardens Trust Site Database. <http://www.londongardensonline.org.uk>. Richmond Cemetery

Associated resources - None recorded

Location

National Grid Reference

Centred TQ 19044 74422 (359m by 487m) TQ17SE Area

Administrative Areas

Borough RICHMOND UPON THAMES

Address/Historic Names

Richmond Cemetery, Lower Grove Road, Richmond, London, TW10

Designations, Statuses and Scorings

Associated Designations - None recorded

Other Statuses and Cross-References

Historic Environment Record - MLO1889	Active
Previous HER/SMR reference - 200932/00/00	Active
Site of Archaeological Interest - Y	Active
SHINE Candidate (Possible)	Active

Ratings and Scorings - None recorded

Land Use

Associated Historic Landscape Character Records - None recorded

Other Land Classes - None recorded

Related Monuments

MLO91354	Lower Grove Road [Richmond Cemetery], Richmond {19th century cemetery chapel}	Hierarchical
----------	--	--------------

HER Number	MLO1889	Site Name	Lower Grove Road [Richmond Cemetery] Richmond, TW10 {19th century cemetery}
MLO103547	Sheen Road [Richmond Cemetery], Richmond, TW10 5BJ {World War One South African War Memorial}		Hierarchical
MLO103845	Lower Grove Road [Richmond Cemetery], Richmond, TW10 {20th century memorial}		Hierarchical

Finds - None recorded

Associated Events/Activities - None recorded

Associated Individuals/Organisations

Millward, Melanie - Greater London Archaeology Advisory Service	GIS Record Revised
Millward, Melanie - Greater London Archaeology Advisory Service	Reviser
O'Halloran, Cian - Greater London Archaeology Advisory Service	Reviser
Greater London Archaeology Advisory Service	GIS Record Revised
Greater London Archaeology Advisory Service	Reviser
Greater London Archaeology Advisory Service	Reviser

HER Number MLO103845 **Site Name** Lower Grove Road [Richmond Cemetery], Richmond, TW10 {20th century memorial}

HER Number	Site Name	Record Type
MLO103845	Lower Grove Road [Richmond Cemetery], Richmond, TW10 {20th century memorial}	Listed Building

The Bromhead Memorial to servicemen who were patients at the Royal Star and Garter Home who were not otherwise commemorated. 1957 signed Cecil Thomas.

Monument Types and Dates

COMMEMORATIVE MONUMENT (Mid 20th Century to 21st Century - 1957 AD to 2050 AD)

Main Building PORTLAND STONE
Material

Evidence EXTANT STRUCTURE

FINIAL (Mid 20th Century to 21st Century - 1957 AD to 2050 AD)

WALL (Mid 20th Century to 21st Century - 1957 AD to 2050 AD)

Evidence EXTANT STRUCTURE

Description and Sources

Description

This building is listed under the Planning (Listed Buildings and Conservation Areas) Act 1990 as amended for its special architectural or historic interest. The GIS point for this site is approximate only.

The Star & Garter Committee was set up in 1915, under the auspices of the British Red Cross Society and at the instigation of Queen Mary, to look into the care of invalid and incurable servicemen injured in the First World War. The Auctioneers and Estate Agents Institute purchased the old Star & Garter Hotel on Richmond Hill and handed the deeds to Queen Mary who, in turn, entrusted the building to the British Red Cross Society. Initially the Society looked after 65 young servicemen. After The Star & Garter became an independent charity in 1922 and it was apparent that the building was not suitable to meet their needs, the former hotel was demolished and the current building was erected on the same site.

The new purpose-built home was designed by Sir Edwin Cooper and funded by the British Women's Hospital Committee under the auspices of Queen Mary. It was Her Majesty, along with King George V, who opened the new home in July 1924. The Charity has operated within the same building on Richmond Hill since that time, but in 2013 will move from Richmond in response to the changing needs of residents and to meet the requirement for the provision of care in other areas across the country.

Former residents of the home are buried in two sections within the nearby Richmond Cemetery, where only the standard headstone, similar to those placed by the War Graves Commission, is permitted. One of the two sections is marked by the Bromhead Memorial which was set up in 1957 to honour ex-servicemen who were not otherwise commemorated. It is inscribed with a roll of honour of 307 names, set out in chronological sequence from 1928 to 1977.

The memorial was a gift from the Bromhead family, dedicated to Lt. Col. AC Bromhead, CBE, JP, a former Governor of the Star and Garter Home, and to his wife Mrs Margaret Bromhead, a former matron and Governor at the home. The memorial was designed by Cecil Thomas OBE, FRBS. It was unveiled in October 1957 by the President of the Home, Field-Marshal Lord Alanbrooke and was dedicated by the Bishop of Southwark.

CW Thomas, OBE, FRBS (1885-1976) trained as a sculptor, medallist and gem engraver in his father's studio and at the Slade School of Fine Art and Central School of Arts and Crafts, London. During the First World War he was on active service before he was seconded to the intelligence service, while during the Second World War he continued as a model maker at Medmenham reconnaissance unit. A commission to design memorials to the two sons of Lord Forster of Lepe, after the First World War, led to further commissions for church and cathedral monuments such as the memorial at the Toc H Guild church, Tower Hill, London. His designs for medals and coins for the Royal Mint included the Coronation medals for Queen Elizabeth II and some of the first coinage issued in her reign.

Richmond Cemetery is unusually endowed with war memorials and war graves since it also includes the burial ground for thirty-nine South African soldiers who are commemorated by the South African War Memorial, designed by Sir Edwin Lutyens and unveiled by General JC Smuts in June 1921.

Details

Materials: Portland stone with timber lintels.

Memorial in the form of a triptych set on a shaped stone base of three shallow steps which encompasses the whole memorial and between shaped buttress walls which extend to the front of the monument. The panels are set between stone piers with moulded cushion capitals, above which are a pair of parallel rows of timber lintels which extend beyond the piers at either end. The central panel has a scrolled head flanking a central finial in the form of a lighted torch and is inscribed: THIS MONUMENT IS / ERECTED IN MEMORY / OF THOSE PATIENTS / WHO HAVE DIED IN THE / STAR AND GARTER

HER Number MLO103845 **Site Name** Lower Grove Road [Richmond Cemetery], Richmond, TW10
{20th century memorial}

HOME / FOR DISABLED SAILORS / SOLDIERS AND AIRMEN / WHO ARE NOT OTHERWISE / COMMEMORATED AND /
WHOSE NAMES ARE / INSCRIBED HEREON / AND IN THE BOOK AT THE HOME

This rear wall of the memorial commemorates 205 ex-servicemen. Each panel is inscribed with a roll of honour set out in chronological sequence from 1928 to 1958, beginning with the left hand panel. The names continue on the reverse of the memorial, spanning the years 1970-1977.

Set forward from the rear wall and perpendicular to it, is a lower spine wall with chamfered piers at the angles, and an oversailing chamfered parapet. It is inscribed on both faces, each commemorating 51 ex-servicemen, covering the years 1961-66 to the left and 1966-70 to the right. To the front is a seated, sentinel lion.

The riser of the step to the front of the memorial is inscribed:

Given by Lt Col AC Bromhead CBE JP / Chairman of the House Committee of Governors 1915-1956.

To the front of the memorial, commemorative slabs to AC Bromhead and his wife are inscribed:

In most loving memory of the same / Lt Col Alfred Claude Bromhead CBE JP / Who died 5th March 1963 aged 86 / at Petersham / Beloved husband and father / His ashes lie here / His life and devotion to family / Was an example and inspiration to many / and / In loving memory of his wife / Margaret Eileen Bromhead / A former matron and governor / Of the Star and Garter Home / Who died 18th October 1978 / Aged 72. (1)

<1> **Historic England**, 2015, *The National Heritage List for England*, 1409405 (Website). SLO81837.

Sources

- (1) Website: Historic England. 2015. The National Heritage List for England.
www.historicengland.org.uk/listing/the-list. 1409405

Associated resources - None recorded

Location

National Grid Reference

TQ 19200 74613 (point) TQ17SE Point

Administrative Areas

Borough RICHMOND UPON THAMES

Address/Historic Names

Bromhead Memorial, Richmond Cemetery, Lower Grove Road, Richmond, London, TW10

Designations, Statuses and Scorings

Associated Designations

Listed Building (II) - 1409405 Bromhead Memorial Active DLO35543

Other Statuses and Cross-References - None recorded

Ratings and Scorings - None recorded

Land Use

Associated Historic Landscape Character Records - None recorded

Other Land Classes - None recorded

Related Monuments

MLO1889	Lower Grove Road [Richmond Cemetery] Richmond, TW10 {19th century cemetery}	Hierarchical
MLO106846	Richmond Road (Nos 222-224), Hackney, E8 3QN {Victorian semi-detached houses}	Functional Association

Finds - None recorded

Associated Events/Activities - None recorded

HER Number MLO103845

Site Name Lower Grove Road [Richmond Cemetery], Richmond, TW10
{20th century memorial}

Associated Individuals/Organisations

Booth, Patrick - Greater London Archaeology Advisory Service

GIS Record Created

Booth, Patrick - Greater London Archaeology Advisory Service

Compiler

Thomas, Cecil - Unassigned

Architect

Greater London Archaeology Advisory Service

GIS Record Created

Greater London Archaeology Advisory Service

Compiler

HER Number MLO103144 **Site Name** Queen's Road [Pesthouse Common] Richmond TW10
{small open space with mature trees}

HER Number	Site Name	Record Type
MLO103144	Queen's Road [Pesthouse Common] Richmond TW10 {small open space with mature trees}	Park

Pesthouse Common, Queen's Road Richmond, was formerly part of extensive common land. It may have been associated with a plague hospital.

Monument Types and Dates

PUBLIC PARK (Georgian to 21st Century - 1785 AD? to 2050 AD)

Evidence DOCUMENTARY EVIDENCE

(Former Type) COMMON LAND (Medieval to Georgian - 1066 AD? to 1785 AD?)

Evidence DOCUMENTARY EVIDENCE

Description and Sources

Description

Pesthouse Common, Queen's Road, Richmond is a small public open space that was once part of extensive common land. The name suggests that there may have been a connection with a plague hospital. In 1785 George III gave parts of the Common to the parish after shutting public rights of way on Love Lane. There is a large school forming the boundary of one side. There are mature horse chestnut and lime trees on the Common. (1)

<1> **London Parks and Gardens Trust**, 2007, *London Parks and Gardens Trust Site Database, Record 952* (Website). SLO78826.

Sources

- (1) Website: London Parks and Gardens Trust. 2007. London Parks and Gardens Trust Site Database. <http://www.londongardensonline.org.uk>. Record 952

Associated resources - None recorded

Location

National Grid Reference

Centred TQ 18993 74773 (89m by 171m) TQ17SE Area

Administrative Areas

Borough RICHMOND UPON THAMES

Address/Historic Names

1785 to 2050

Pesthouse Common, Queen's Road, Richmond, TW10

Designations, Statuses and Scorings

Associated Designations - None recorded

Other Statuses and Cross-References - None recorded

Ratings and Scorings - None recorded

Land Use

Associated Historic Landscape Character Records - None recorded

Other Land Classes - None recorded

Related Monuments - None Recorded

Finds - None recorded

Associated Events/Activities - None recorded

Associated Individuals/Organisations

HER Number MLO103144

Site Name Queen's Road [Pesthouse Common] Richmond TW10
{small open space with mature trees}

Boggia, Sam - Greater London Archaeology Advisory Service

GIS Record Created

Boggia, Sam - Greater London Archaeology Advisory Service

Compiler

Greater London Archaeology Advisory Service

Compiler

HER Number	Site Name	Record Type
MLO91237	RICHMOND CHURCH, ESTATE ALMSHOUSES	Listed Building

Record created from imported Listed Buildings On-line dataset 11-Jan-2006; see linked Designation record for full details

Monument Types and Dates

ALMSHOUSE (Victorian - 1843 AD)

Description and Sources

Description

1. 5028 SHEEN ROAD
Richmond Church, Estate Almshouses TQ 1875 11/19
II GV
2. 1843, William Crawford Stow (founder member of R.I.B.A.). range of 10, 2-storey dwellings designed in a composite Romanesque/Tudor style, and executed in polychrome brickwork (red, white and yellow). Steep roof covered in diamond shaped tiles. Parapet. Four gabled advanced bays, each 3 windows wide, articulate the facade. Central slightly smaller central gable with plaque (inscription illegible). Gables contain oculi, each having 3 planes of polychromed voussoirs. Round-headed windows and doors, also with recessed layers of polychromed voussoirs. Large Tudor-style chimneys flank and emphasise the gables.
Listing NGR: TQ1878675094

Sources - None recorded

Associated resources - None recorded

Location

National Grid Reference

TQ 18786 75093 (point) TQ17NE Point

Administrative Areas

Borough RICHMOND UPON THAMES

Address/Historic Names

36 Sheen Road, Richmond, Surrey, TW9 1AW

Designations, Statuses and Scorings

Associated Designations

Listed Building (II) - 435926	RICHMOND CHURCH, ESTATE ALMSHOUSES	Active	DLO26234
-------------------------------	------------------------------------	--------	----------

Other Statuses and Cross-References

SHINE Candidate (Unlikely)	Active
----------------------------	--------

Ratings and Scorings - None recorded

Land Use

Associated Historic Landscape Character Records - None recorded

Other Land Classes - None recorded

Related Monuments - None Recorded

Finds - None recorded

Associated Events/Activities - None recorded

Associated Individuals/Organisations - None recorded

HER Number 020840/00/00 - ML Site Name RICHMOND HILL

HER Number	Site Name	Record Type
020840/00/00 - MLO917	RICHMOND HILL	Find Spot

Monument Types and Dates

FINDSPOT (Palaeolithic - 500000 BC to 10001 BC)

Description and Sources

Description

FLINT IMPLEMENT FOUND ON RICHMOND HILL, DESCRIBED AS "DRIFT IMPLEMENT, ROUGHPOINTED TYPE, HAS BEEN BURNT".

FLINT IMPLEMENT (Artifact). SLO14697.

Ordnance Survey, *Ordnance Survey Card Index, TQ 17 SE 25* (Ordnance Survey Archaeological Record Card). SLO31865.

South West London Archaeological Unit, *SMR CARD* (Unpublished document). SLO14695.

South West London Archaeological Unit, *SMR CARD* (Unpublished document). SLO14696.

Sources

Ordnance Survey Archaeological Record Card: Ordnance Survey. Ordnance Survey Card Index. TQ 17 SE 25

Artifact: FLINT IMPLEMENT. ACC NO LM 49.107/196.

Unpublished document: South West London Archaeological Unit. SMR CARD. K317 (RICHMOND).

Unpublished document: South West London Archaeological Unit. SMR CARD. A27 (RICHMOND).

Associated resources - None recorded

Location

National Grid Reference

TQ 184 744 (point) TQ17SE Point

Administrative Areas

Borough RICHMOND UPON THAMES

Address/Historic Names

RICHMOND HILL

Designations, Statuses and Scorings

Associated Designations - None recorded

Other Statuses and Cross-References

Site of Archaeological Interest - Y Active

SHINE Candidate (Unlikely) Active

Historic Environment Record - 020840/00/00 Active

Ratings and Scorings - None recorded

Land Use

Associated Historic Landscape Character Records - None recorded

Other Land Classes - None recorded

Related Monuments - None Recorded

Associated Finds

FLO2427 FIND UNCLASSIFIED (Palaeolithic - 500000 BC to 10001 BC)

Associated Events/Activities - None recorded

HER Number 020840/00/00 - ML **Site Name** RICHMOND HILL

Associated Individuals/Organisations - None recorded

HER Number MLO91399 **Site Name** Sheen Road (40-46), Richmond {18th century terraced house}

HER Number	Site Name	Record Type
MLO91399	Sheen Road (40-46), Richmond {18th century terraced house}	Listed Building

Terrace of mid-18th century houses.

Monument Types and Dates

PARAPET (Undated)
TERRACE (Georgian - 1733 AD to 1766 AD)

Description and Sources

Description

This building is listed under the Planning (Listed Buildings and Conservation Areas) Act 1990 as amended for its special architectural or historic interest. The GIS polygon for this building is an approximate only.

1. 5028 SHEEN ROAD (north side)

Nos 40 to 46 (even) (Formerly listed as No 40 No 42 (Court Cottage) No 44 and No 46 TQ 1874 24/11 24.12.68

II

2. Terrace of four mid 18th century houses, each of two storeys with attic and basement. Continuous mansard roof, partly slated, partly pantiled. Brick built with parapet. Each house one window wide plus entrance door with single projecting hood. Segmental windows with flush framed sashes, retaining glazing bars. (1)

<1> **Historic England**, 2015, *The National Heritage List for England, 1262107* (Website). SLO81837.

Sources

(1) Website: Historic England. 2015. The National Heritage List for England. www.historicengland.org.uk/listing/the-list. 1262107

Associated resources - None recorded

Location

National Grid Reference

Centred TQ 1828 7498 (19m by 19m) TQ17SE Area

Administrative Areas

Borough RICHMOND UPON THAMES

Address/Historic Names

42 Sheen Road, Richmond, London

42 Sheen Road, Richmond, Surrey, TW9 1AW

44 Sheen Road, Richmond, London

46 Sheen Road, Richmond, London

Designations, Statuses and Scorings

Associated Designations

Archaeological Priority Area (APA) - DLO33468	Richmond	Active	DLO33468
Listed Building (II) - 435925	No name for this Entry	Active	DLO26396

Other Statuses and Cross-References

SHINE Candidate (Unlikely)	Active
----------------------------	--------

HER Number MLO91399

Site Name Sheen Road (40-46), Richmond {18th century terraced house}

Ratings and Scorings - None recorded

Land Use

Associated Historic Landscape Character Records - None recorded

Other Land Classes - None recorded

Related Monuments - None Recorded

Finds - None recorded

Associated Events/Activities - None recorded

Associated Individuals/Organisations

Harrison, Louise - Greater London Archaeology Advisory Service

GIS Record Created

Harrison, Louise - Greater London Archaeology Advisory Service

Reviser

Greater London Archaeology Advisory Service

GIS Record Created

Greater London Archaeology Advisory Service

Reviser

HER Number MLO91401

Site Name Sheen Road (45), Richmond {18th century house}

HER Number	Site Name	Record Type
MLO91401	Sheen Road (45), Richmond {18th century house}	Listed Building

Early 18th century house.

Monument Types and Dates

HOUSE (Stuart to 21st Century - 1701 AD to 2050 AD)
PARAPET (Stuart to 21st Century - 1701 AD to 2050 AD)
PILASTER (Stuart to 21st Century - 1701 AD to 2050 AD)
RAILINGS (Stuart to 21st Century - 1701 AD to 2050 AD)
STEPS (Stuart to 21st Century - 1701 AD to 2050 AD)
VOUSSOIR (Stuart to 21st Century - 1701 AD to 2050 AD)

Description and Sources

Description

This building is listed under the Planning (Listed Buildings and Conservation Areas) Act 1990 as amended for its special architectural or historic interest. The GIS polygon for this building is approximate only.

1. 5028 SHEEN ROAD (south side)

No 45 TQ 1874 24/13 10.1.50

II

2. Early 18th century, three-storey house with basement, four windows wide, having recessed panels beneath those of the first and second floors. Flush framed square headed sash retaining glazing bars. Blind windows above door. Built in yellow brick with red dressings. Parapet. Good timber doorcase with fluted Corinthian pilasters, rusticated voussoirs and carved frieze. Stone steps and railings to entrance. (1)

<1> **Historic England**, 2015, *The National Heritage List for England, 1262122* (Website). SLO81837.

Sources

(1) Website: Historic England. 2015. The National Heritage List for England. www.historicengland.org.uk/listing/the-list. 1262122

Associated resources - None recorded

Location

National Grid Reference

Centred TQ 18309 74946 (14m by 13m) TQ17SE Area

Administrative Areas

Borough RICHMOND UPON THAMES

Address/Historic Names

45 Sheen Road, Richmond, Surrey, TW9 1AJ

Designations, Statuses and Scorings

Associated Designations

Archaeological Priority Area (APA) - DLO33468	Richmond	Active	DLO33468
Listed Building (II) - 435849	No name for this Entry	Active	DLO26398

Other Statuses and Cross-References

SHINE Candidate (Unlikely)	Active
----------------------------	--------

Ratings and Scorings - None recorded

Land Use

HER Number MLO91401

Site Name Sheen Road (45), Richmond {18th century house}

Associated Historic Landscape Character Records - None recorded

Other Land Classes - None recorded

Related Monuments - None Recorded

Finds - None recorded

Associated Events/Activities - None recorded

Associated Individuals/Organisations

Harrison, Louise - Greater London Archaeology Advisory Service

GIS Record Created

Harrison, Louise - Greater London Archaeology Advisory Service

Reviser

Greater London Archaeology Advisory Service

GIS Record Created

Greater London Archaeology Advisory Service

Reviser

HER Number MLO11839 **Site Name** Sheen Road [East Sheen Cemetery], Sheen, Richmond, TW10 5JB {20th century cemetery}

HER Number	Site Name	Record Type
MLO11839	Sheen Road [East Sheen Cemetery], Sheen, Richmond, TW10 5JB {20th century cemetery}	Monument

The cemetery was laid out in 1903 and has since expanded to the south. The approach to the main burial area is located down a tree line avenue.

Monument Types and Dates

CEMETERY (Edwardian to 21st Century - 1903 AD to 2050 AD)
Evidence DESIGNED LANDSCAPE

GATE PIER (Edwardian to 21st Century - 1903 AD to 2050 AD)
Evidence EXTANT STRUCTURE

TREE AVENUE (Edwardian to 21st Century - 1903 AD to 2050 AD)
Evidence DESIGNED LANDSCAPE

MORTUARY CHAPEL (Edwardian to 21st Century - 1906 AD to 2050 AD)
Evidence EXTANT BUILDING

Description and Sources

Description

East Sheen Cemetery is located off the Sheen Road and was established in 1903. The entrance to the cemetery is through a pair of brick gate piers leading to a tree lined avenue. The central chapel was designed in 1906 by Reginald Rowell, a local architect buried in the cemetery. The chapel is of a 13th century Gothic style with a slender fleche.

Within the cemetery is a walled garden which is the grave of Louise Espinosa and her husband. (1)

The chapel was initially located to the south of the cemetery (2) and since then the cemetery has expanded to the south.

On the 3rd edition OS map the cemetery is named as Barnes Cemetery. (2)

<1> **Meller, H.**, 1985, *London Cemeteries: An Illustrated Guide and Gazetteer*, p 118-9 (Monograph). SLO10245.

<2> **Ordnance Survey**, 1904 - 1939, *Ordnance Survey 25in Third Edition -Surrey* (Published map/plan). SLO79378.

Sources

- (1) Monograph: Meller, H.. 1985. London Cemeteries: An Illustrated Guide and Gazetteer. p 118-9
- (2) Published map/plan: Ordnance Survey. 1904 - 1939. Ordnance Survey 25in Third Edition -Surrey.

Associated resources - None recorded

Location

National Grid Reference

Centred TQ 19262 74734 (252m by 579m) TQ17SE Area

Administrative Areas

Borough RICHMOND UPON THAMES

Address/Historic Names

East Sheen Cemetery, Sheen Road, Sheen, Richmond, London, TW10 5JB

Designations, Statuses and Scorings

Associated Designations - None recorded

Other Statuses and Cross-References

Historic Environment Record - MLO11839	Active
Previous HER/SMR reference - 226001/00/00	Active
SHINE Candidate (Possible)	Active

Ratings and Scorings - None recorded

HER Number MLO11839

Site Name Sheen Road [East Sheen Cemetery], Sheen, Richmond,
TW10 5JB {20th century cemetery}

Land Use

Associated Historic Landscape Character Records - None recorded

Other Land Classes - None recorded

Related Monuments

MLO91328	Sheen Road [East Sheen Cemetery], Sheen, Richmond, TW10 {Lancaster Monument}	Hierarchical
MLO91349	Sheen Road [East Sheen Cemetery], Sheen, Richmond, TW10 {Buxton Monument}	Hierarchical
MLO107192	Cemetery Chapel, The East Sheen Cemetery, Sheen Road TW10 {20th century cemetery chapel}	Hierarchical

Finds - None recorded

Associated Events/Activities - None recorded

Associated Individuals/Organisations

Millward, Melanie - Greater London Archaeology Advisory Service	GIS Record Revised
Millward, Melanie - Greater London Archaeology Advisory Service	Reviser
Greater London Archaeology Advisory Service	GIS Record Created
Greater London Archaeology Advisory Service	Reviser

HER Number MLO102890 **Site Name** Sheen Road [Hickey's Almshouses Garden], Richmond TW10 {Private garden belonging to almshouses}

HER Number	Site Name	Record Type
MLO102890	Sheen Road [Hickey's Almshouses Garden], Richmond TW10 {Private garden belonging to almshouses}	Park

Hickey's Almshouses Gardens, Sheen Road, Richmond, is a mostly grassed private garden between the Almshouses and the railings fronting onto Sheen Road. There are a few trees, a central path and flower beds.

Monument Types and Dates

GARDEN ((between) Hanoverian to 21st Century - 1834 AD to 2050 AD)
Evidence DOCUMENTARY EVIDENCE

Description and Sources

Description

Hickey's Almshouses Gardens, Sheen Road, Richmond lie between the Almshouses and the railings fronting Sheen Road. The Almshouses were built in 1834 for 10 men and 10 women. There are a porter's lodge and large railings fronting the garden and there is a central path from the entrance gate and around the perimeter, with some flowers planted inside the lodge entrance. The rest of the garden is grassed with a few trees (1).

<1> **London Parks and Gardens Trust**, 2007, *London Parks and Gardens Trust Site Database, record 941* (Website). SLO78826.

Sources

(1) Website: London Parks and Gardens Trust. 2007. London Parks and Gardens Trust Site Database. <http://www.londongardensonline.org.uk>. record 941

Associated resources - None recorded

Location

National Grid Reference

Centred TQ 18856 75073 (78m by 59m) TQ17NE Area

Administrative Areas

Borough RICHMOND UPON THAMES

Address/Historic Names

1834 to 2050

Hickey's Almshouses, Sheen Road/Grena Road/St Mary's Grove, Richmond, TW9

Designations, Statuses and Scorings

Associated Designations - None recorded

Other Statuses and Cross-References - None recorded

Ratings and Scorings - None recorded

Land Use

Associated Historic Landscape Character Records - None recorded

Other Land Classes - None recorded

Related Monuments

MLO91400	HICKEYS ALMSHOUSES, INCLUDING CHAPEL AND LODGES	Hierarchical
----------	---	--------------

Finds - None recorded

Associated Events/Activities - None recorded

Associated Individuals/Organisations

HER Number MLO102890

Site Name Sheen Road [Hickey's Almshouses Garden], Richmond
TW10 {Private garden belonging to almshouses}

Boggia, Sam - Greater London Archaeology Advisory Service

GIS Record Created

Boggia, Sam - Greater London Archaeology Advisory Service

Compiler

Greater London Archaeology Advisory Service

Compiler

Greater London Archaeology Advisory Service

GIS Record Created

HER Number MLO103547 **Site Name** Sheen Road [Richmond Cemetery], Richmond, TW10 5BJ
{World War One South African War Memorial}

HER Number	Site Name	Record Type
MLO103547	Sheen Road [Richmond Cemetery], Richmond, TW10 5BJ {World War One South African War Memorial}	Listed Building

A monument to the fallen of the First World War from South Africa. It was designed by Sir Edwin Lutyens and unveiled by General JC Smuts in June 1921.

Monument Types and Dates

CENOTAPH (Early 20th Century - 1921 AD)

Main Building GRANITE
Material

Evidence EXTANT STRUCTURE

PLINTH (PEDESTAL) (Early 20th Century - 1921 AD)

Description and Sources

Description

List entry Description

Summary of Building

Monument to the fallen of the First World War from South Africa. Designed by Sir Edwin Lutyens, unveiled by General JC Smuts in June 1921.

Reasons for Designation

The South African War Memorial in Richmond Cemetery is designated at Grade II for the following principal reasons: *Design interest: granite cenotaph, designed by Sir Edwin Lutyens, inscribed in both English and Dutch; *Historic interest: erected by The South African Hospital and Comforts Fund Committee to commemorate the thirty-nine South African soldiers who were buried in Richmond Cemetery, close to the South African Hospital (later the South African Military Hospital) that was initially based in Richmond Park. It became a focus for pilgrimage in the 1920s and '30s.

History

The South African War Memorial was designed by Sir Edwin Lutyens and unveiled by General JC Smuts in June 1921. The design derives from Lutyens' Cenotaph in Whitehall of 1919-20 (listed Grade I).

In order to provide care for the large number of South African troops serving in the First World War, the South African Hospital was established in Richmond Park in June 1916. In July 1918 it was amalgamated with the Richmond Military Hospital to form the South African Military Hospital. The South African Hospital and Comforts Fund Committee decided to erect a memorial to commemorate thirty-nine South African soldiers who were buried in Richmond Cemetery, which was at that time known as 'soldiers corner'. The memorial, which overlooks the graves, is inscribed in both English and Dutch. After it was unveiled by General Smuts in 1921 it became the focus of South African pilgrimage throughout the 1920s and 1930s. In 1981 the Commonwealth War Graves Commission became aware of its existence and agreed to maintain the memorial on behalf of the South African Government.

Lutyens designed the large Rand Regiments Memorial in Johannesburg (1910) which was his first war memorial.

Richmond Cemetery is unusually endowed with war memorials and war graves since it also includes the burial ground for the Royal Star and Garter Home. The Bromhead Memorial was erected in 1957 in memory of those from the Home who are not otherwise commemorated.

Sir Edwin Lutyens OM RA (1869-1944) was the leading English architect of his generation. Before the First World War his reputation rested on his country houses and his work at New Delhi, but during and after the war he became the pre-eminent architect for war memorials in England, France and the British Empire. While the Cenotaph in Whitehall (London) had the most influence on other war memorials, the Thiepval Arch was the most influential on other forms of architecture. He designed the Stone of Remembrance which was placed in all Imperial War Graves Commission cemeteries and in some cemeteries in England, including some with which he was not otherwise associated.

Details

Coarse grained granite cenotaph with a slightly flared base set on a similar stone plinth.

The outward face is inscribed: Union is Strength / Our / Glorious / Dead Below is an inscribed cross.

The inner face, overlooking the group of graves, is inscribed: Eendraght maakt macht / Onzen / Gevallenen / Helden

HER Number MLO103547

Site Name Sheen Road [Richmond Cemetery], Richmond, TW10 5BJ
{World War One South African War Memorial}

In the apex of each face is the head of a springbok in low relief.

The side elevations have a stylised stone wreath at the base and are inscribed to north and south respectively with the dates MCMXIV and MCMXIX.

This list entry was subject to a Minor Amendment on 26/10/2015

Selected Sources

Books and journals

Skelton, T, Gliddon, G, Lutyens and the Great War, (2008), 95-6, 158, 172

National Grid Reference: TQ1913474494

<1> **Historic England**, 2015, *The National Heritage List for England, 1409475* (Website). SLO81837.

Sources

- (1) Website: Historic England. 2015. The National Heritage List for England.
www.historicengland.org.uk/listing/the-list. 1409475

Associated resources - None recorded

Location

National Grid Reference

TQ 19134 74494 (point)

TQ17SE

Point

Administrative Areas

Borough

RICHMOND UPON THAMES

Address/Historic Names

Richmond Cemetery, Sheen Road, Richmond, London, TW10 5BJ

Designations, Statuses and Scorings

Associated Designations

Listed Building (II) - 1409475

South African War Memorial

Active

DLO35505

Other Statuses and Cross-References - None recorded

Ratings and Scorings - None recorded

Land Use

Associated Historic Landscape Character Records - None recorded

Other Land Classes - None recorded

Related Monuments

MLO1889

Lower Grove Road [Richmond Cemetery]
Richmond, TW10 {19th century cemetery}

Hierarchical

Finds - None recorded

Associated Events/Activities - None recorded

Associated Individuals/Organisations

Bell, Melanie - Greater London Archaeology Advisory Service

Compiler

Bell, Melanie - Greater London Archaeology Advisory Service

GIS Record Created

Lutyens, Edwin Landseer - Unassigned

Designer

HER Number MLO103547

Site Name Sheen Road [Richmond Cemetery], Richmond, TW10 5BJ
{World War One South African War Memorial}

Greater London Archaeology Advisory Service

GIS Record Created

Greater London Archaeology Advisory Service

Compiler

Appendix C

Site borehole and trail pit logs

15 Pages ~~15~~ 15-20

1" sheet 270 18/11 SE/21
 6" sheet Survey 6 NE/E
 Δ 187 749
 W.P. 21027 11/10

GROUND EXPLORATIONS LIMITED
BOREHOLE SECTION SHEET

Date: November 1955

CONTRACT NAME Feldon Avenue British Geological Survey **ORDER No.**
Bored for: W. V. Zinn, Esq., M. Cons. K., B.Sc., M.I.C.E., M.I. Struct. E.,
Address: 172 Buckingham Pal. Rd., S.W.1. M. Soc. C.S. (France)
Address of Site: Feldon Avenue
District or Town: Richmond **County:** Surrey
Standing Water Level: 3 ft. British Geological Survey below surface **Dia. of Borehole:** 6 British Geological Survey **Inches.**
Water Struck (1) 3 ft. **(2)** (3)
Boring Commenced: 4.11.55 **Boring Completed:** 8.11.55
Special Remarks:

Jar Samples: 1537 - 6", 1538 - 3'0", 1539 - 4'6", 1541 - 1'0", 1543 - 1'0",
1545 - 21'0", 1546 - 23'0", 1548 - 30'0", 1550 - 36'0", 1552 - Water.
Core Samples: 1540 - 5'0" - 6'6", 1542 - 12'0" - 14'0", 1544 - 20'0" - 21'6",
1547 - 27'0" - 29'0", 1549 - 35'0" - 36'6", 1661 - 38'6" - 40'0"

Sand/Gravel Samples:

DESCRIPTION OF STRATA	Thickness		Depth Below Surface	
	Feet	Inches	Feet	Inches
The descriptions are given in accordance with the Civil Engineering Code of Practice No. 1 "Site Investigations." No responsibility is accepted for these descriptions and clients should examine the samples submitted.				
No. <u>1</u> Boring				
<u>Hard Ground</u>	<u>4</u>	<u>-</u>	<u>4</u>	<u>-</u>
<u>Sandy Clay</u>	<u>1</u>	<u>-</u>	<u>5</u>	<u>-</u>
<u>Brown Mottled Clay</u>	<u>17</u>	<u>-</u>	<u>22</u>	<u>-</u>
<u>Blue Clay</u>	<u>18</u>	<u>-</u>	<u>40</u>	<u>-</u>
TOTAL FROM SURFACE	40	-	40	-

This form is to be returned to Head Office immediately the borehole is finished.

Foreman's Signature: Date:

16

TQ 17 SE/21
 Δ 187 749

GROUND EXPLORATIONS LIMITED BOREHOLE SECTION SHEET

Date.....November.....1955

CONTRACT NAME Feldon Avenue British Geological Survey **ORDER No.**
Bored for: W. V. Zinn, Esq., M.Com.C.E., B.Sc., M.I.C.E. M.I.Struct.E.,
Address: 172 Buckingham Palace Road, S.W.1. British Geological Survey M.Sc.C.E. (France)
Address of Site: Feldon Avenue
District or Town: Richmond **County:** Surrey
Standing Water Level: 6'0" British Geological Survey **below surface** **Dia. of Borehole:** 6 **Inches.**
Water Struck (1) 6'0" **(2)** **(3)**
Boring Commenced: 17.11.55 **Boring Completed:** 18.11.55
Special Remarks:

Jar Samples: 2726 - 2'0", 2725 - 4'0", 2726 - 5'0", 2727 - 7'6", 2729 - 12'0",
2732 - 17'0", 2733 - 22'0"
Core Samples: 2726 - 8'0" - 9'6", 2730 - 13'0" - 14'6", 2732 - 18'0" - 19'6",
2734 - 23'6" - 25'0"

Sand/Gravel Samples:

DESCRIPTION OF STRATA

The descriptions are given in accordance with the Civil Engineering Code of Practice No. 1 "Site Investigations." No responsibility is accepted for these descriptions and clients should examine the samples submitted.

No. 2 Boring OD + ca 15 m.

	Thickness		Depth Below Surface	
	Feet	Inches	Feet	Inches
Made Ground	2	6	2	6
Sandy Clay	2	6	5	0
Sand and Gravel	2	-	7	0
Brown Clay	13	-	20	6
Firm Blue Clay	7	-	25	7

TOTAL FROM SURFACE .. 25 **0** 25 **0**

This form is to be returned to Head Office immediately the borehole is finished.

Foreman's Signature..... **Date**.....

20

TQ 17 SE/21
 Δ 187 749

British Geological Survey

British Geological Survey

British Geological Survey

GROUND EXPLORATIONS LIMITED BOREHOLE SECTION SHEET

Date.....November.....1955.

CONTRACT NAME *British Geological Survey* **Faldon Avenue** *British Geological Survey* **ORDER No.**
Bored for: *British Geological Survey* **W. V. Sinn, Esq., M. Cons. E., B.Sc., M.I.C.E., M.I. Struct. E.,**
Address: *British Geological Survey* **172 Buckingham Palace Road, S.W.1.** **M.Sc.E.E. (France)**
Address of Site: *British Geological Survey* **Faldon Avenue**
District or Town: *British Geological Survey* **Richmond** **County:** *British Geological Survey* **Surrey**
Standing Water Level: *British Geological Survey* **6'0" below surface** **Dia. of Borehole:** *British Geological Survey* **6 Inches.**
Water Struck (1) *British Geological Survey* **6'0" (2) (3)**
Boring Commenced: *British Geological Survey* **14.11.55** **Boring Completed:** *British Geological Survey* **15.11.55**
Special Remarks:

Jar Samples: *British Geological Survey* **695 - 1'0", 696 - 2'0", 697 - 3'0", 698 - 4'0", 699 - 5'0", 700 - 14'0",**
2707 - 19'0", 2709 - 24'0", 2710 - 29'0"

Core Samples: *British Geological Survey* **699 - 10'0", 2700 - 15'0" - 16'6", 2705 - 20'0" - 21'6", 2711 - 30'0" -**
2706 - 15'0" - 16'6", 2708 - 20'0" - 21'6" **(31'6"**

Sand/Gravel Samples:

DESCRIPTION OF STRATA	Thickness		Depth Below Surface	
	Feet	Inches	Feet	Inches
<p>The descriptions are given in accordance with the Civil Engineering Code of Practice No. 1 "Site Investigations." No responsibility is accepted for these descriptions and clients should examine the samples submitted.</p> <p>No. 6 Boring</p>				
Rede Ground	2	-	2	-
Clayey Sand and Gravel	6	-	8	-
Brown Clay	8	-	16	-
Blue Clay	15	6	31	6
TOTAL FROM SURFACE ..	31	6	31	6

This form is to be returned to Head Office immediately the borehole is finished.

Foreman's Signature..... Date.....