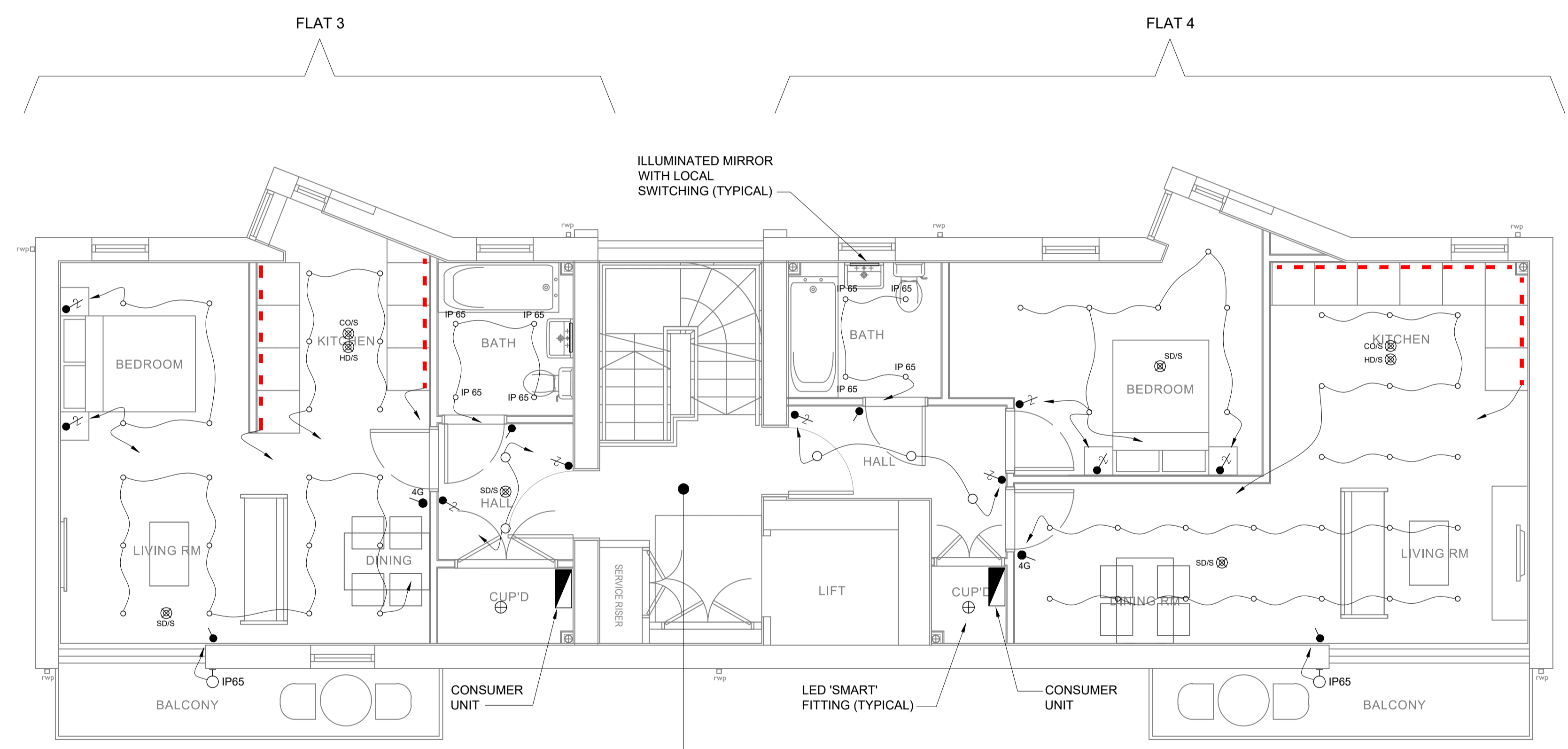


LEGEND

| | | | |
|--|--|------|--|
| | 13A SINGLE SWITCHED CLEANERS SOCKET | | DENOTES IP65 RATED LUMINAIRE |
| | 13A SINGLE SWITCHED SOCKET OUTLET | +E | DENOTES EMERGENCY LUMINAIRE |
| | AS ABOVE SERVING FRIDGE | HDIS | HEAT DETECTOR WITH INTEGRAL SOUNDER |
| | AS ABOVE SERVING WASHING MACHINE | SD | SMOKE DETECTOR |
| | AS ABOVE SERVING DISHWASHER | SDIS | SMOKE DETECTOR WITH INTEGRAL SOUNDER |
| | AS ABOVE SERVING COOKER HOOD | COIS | CO DETECTOR WITH INTEGRAL SOUNDER |
| | 13A TWIN SWITCHED SOCKET OUTLET | n | Cat.6 DATA OUTLET (n - Denotes number of ways) |
| | 13A UNSWITCHED FUSED CONNECTION UNIT | | TV/SAT OUTLET (May be multipoint) |
| | 13A SWITCHED FUSED CONNECTION UNIT | | FIRE ALARM BREAK GLASS UNIT |
| | AS ABOVE SERVING HRV UNIT | EXIT | ILLUMINATED EXIT SIGN |
| | AS ABOVE SERVING TOWEL RAIL | PIR | PASSIVE INFRARED SENSOR |
| | AS ABOVE SERVING BATHROOM MIRROR DEMISTER | CR | ACCESS CONTROL CARD/FOB READER |
| | FLEX OUTLET | REX | REQUEST FOR EXIT UNIT |
| | ONE WAY SWITCH | | MAGNETIC DOOR LOCK |
| | TWO WAY SWITCH | | EMERGENCY BREAK GLASS DOOR RELEASE |
| | RECESSED LED DOWNLIGHT LUMINAIRE | FAP | FIRE ALARM PANEL |
| | LIGHTING POINT FOR PENDANT | | EMERGENCY LIGHTING KEY SWITCH |
| | RECESSED LED PANEL WITH INTEGRAL PRESENCE DETECTOR | I | INTERCOM UNIT AND REMOTE GATE RELEASE LINKED TO MAIN ENTRANCE GATES |
| | 1200x50mm LINEAR LED SUSPENDED LUMINAIRE, BLACK FINISH | | MCB DISTRIBUTION BOARD |
| | WALL MOUNTED LED LUMINAIRE | | COMMUNICATIONS / DATA PATCH PANEL '6U' WALL MOUNTED TO ACCEPT ALL CAT 6 CABLING FROM FLOOR BOXES |
| | CUPBOARD 'SMART' LED FITTING | | 3 COMPARTMENT FLUSH SCREED TRUNKING WITH 3 COMPARTMENT FLOOR BOX IN POSITION INDICATED |
| | VIDEO DOOR ENTRY UNIT | | |
| | LED STRIP LIGHT TO KITCHEN UNITS | | |

- PROJECT NOTES
- DO NOT SCALE FROM THIS DRAWING. ALL DIMENSIONS ARE NOMINAL AND MUST BE CHECKED ON SITE.
 - ANY DISCREPANCIES SHOULD BE BROUGHT TO THE ATTENTION OF THE SERVICES CONSULTANT.
 - THESE DRAWINGS ARE COPYRIGHT OF BSDA. PLEASE OBTAIN PERMISSION BEFORE COPYING. THESE DRAWINGS MUST NOT BE MODIFIED OTHER THAN BY BSDA.
 - ANY DISCREPANCIES BETWEEN THIS DRAWING AND THE SPECIFICATION, ENGINEERING SERVICES, ARCHITECTURAL OR STRUCTURAL ENGINEERING DRAWINGS ARE TO BE BROUGHT TO THE ATTENTION OF THE ENGINEER PRIOR TO ANY WORK.



REFER TO DRAWING No. W679-ME003 FOR STAIRCASE AND LOBBY M&E SERVICES

SECOND @ 1:50

| | | | |
|-----|----------------------|----------|------|
| T2 | REVISED TENDER ISSUE | 11.01.21 | JB |
| T1 | TENDER ISSUE | 14.10.20 | JB |
| Rev | DESCRIPTION | DATE | AUTH |



BUILT SERVICES DESIGN ASSOCIATES
 117 Waterloo Road, London, SE1 8UL.
 Tel: 0207 902 1132, Fax: 0207 960 4158, email: info@bsdame.uk

Client:
WOODCROFT DEVELOPMENTS



Architect:
ARC ARCHITECTURE Ltd
 CHAPEL STUDIOS
 14 PUREWELL
 DORSET
 BH23 1EP

Project:
 63 SANDYCOMBE ROAD
 RICHMOND
 TW9 2EP

Title:
 SOUTH BUILDING
 SECOND FLOOR
 LIGHTING AND FIRE ALARMS

| | | | | |
|--------|--------|---------|----------|-------|
| Drawn: | Date: | Scale: | Checked: | Auth: |
| GS | SEP 20 | 1:50@A1 | PN | JB |

| | | |
|-------------|-------------|------|
| Project No: | Drawing No: | Rev: |
| W679 | E205 | T2 |

Status: TENDER