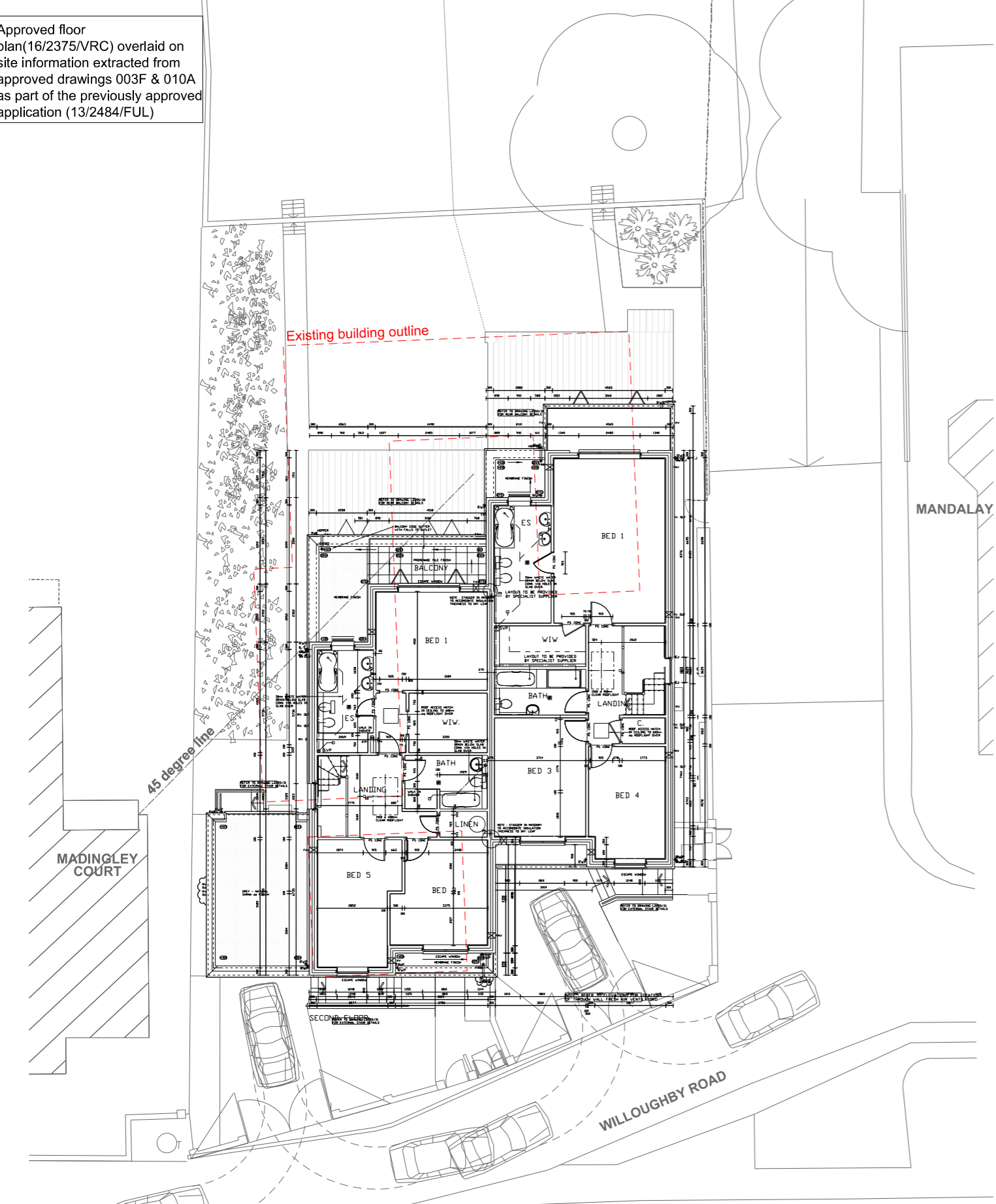
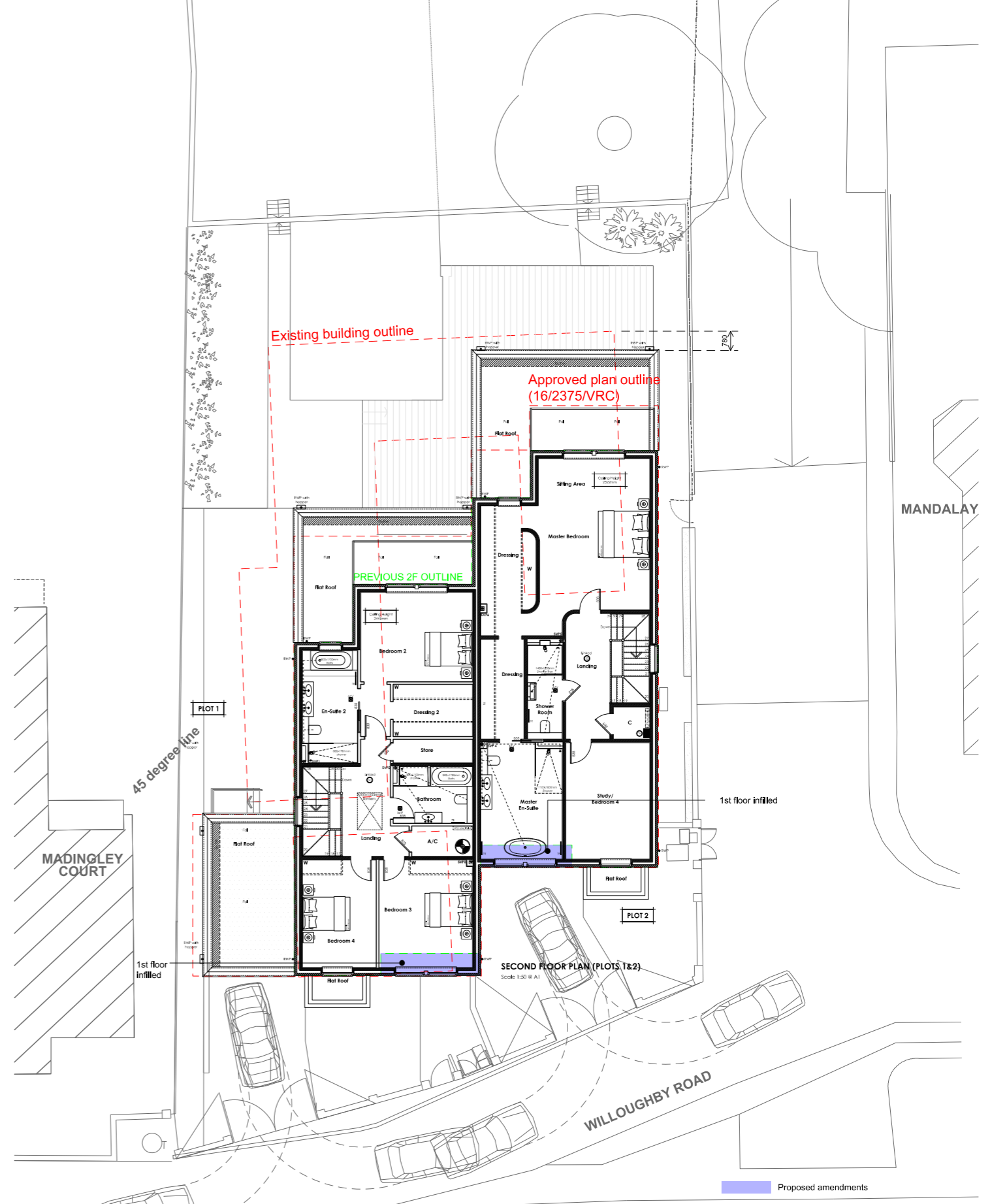


Approved floor plan(16/2375/VRC) overlaid on site information extracted from approved drawings 003F & 010A as part of the previously approved application (13/2484/FUL)



01 Approved Plan 16/2375/VRC Second Floor 1:200



02 Proposed Plan Second Floor 1:200



Jo Cowen Architects Jo Cowen Architects Ltd 533 Kings Road Chelsea London SW10 0TZ 	Disclaimer Jo Cowen Architects takes no responsibility for any dimensions that are obtained by scaling this drawing. If no dimension is given, it is deemed to be the responsibility of the contractor to ascertain the dimension from site measurement before any fabrication takes place. All copyright for information included on this drawing remains with Jo Cowen Architects	Revision A	Date 04/01/21	Description PLANNING REVISION A	Description Proposed amendments to the approved application (13/2484/FUL) & the subsequent approved variation of the drawings (16/2375/VRC) to demolish "The Bungalow" and "The Annex" on Willoughby Road, London and to construct a pair of semi-detached three-storey houses with garages, access, forecourt, bin stores, landscaping and ancillary works.	Project Willoughby Road			Drawing Title Proposed Second Floor Plan	
		Drawing Purpose PLANNING		Drawing Date 17/07/20	Revision Date 04/01/21	Revision A	Drawing Number JCA-0721-03-PP-2F	Scale @ A3 1:200		