

The London Borough of Richmond
410 - 412 Richmond Road
Kingston
KT2 5PU

Design and Access Statement

1. Introduction

This Design and Access statement is submitted to accompany the planning application for 410 - 412 Richmond Road, Kingston KT2 5PU and sets out the principles which inform the general design and layout of the proposal.

2. Application Proposal

- 2.1 The proposals are to seek approval for;
Shopfront security shutters only to be used / operational between 11pm and 7am outside of proposed opening hours.

3. Location and Site Description

4. Design Objectives

- 4.1 The proposals are for shopfront security shutters discreetly fitted into the fascia. The operational hours of the security shutters to avoid any daytime visual impact to the streetscape are proposed between the hours of 11pm and 7am annually.

Currently there are several external security shutter installations adjacent within the Ham Parade with either partial or fully closed shutters. The proposals would therefore continue this form of although as stated strictly within the operational hours of 11pm and 7am.



Fig 1. 299 Richmond Road fully enclosed external shutter to shopfront.

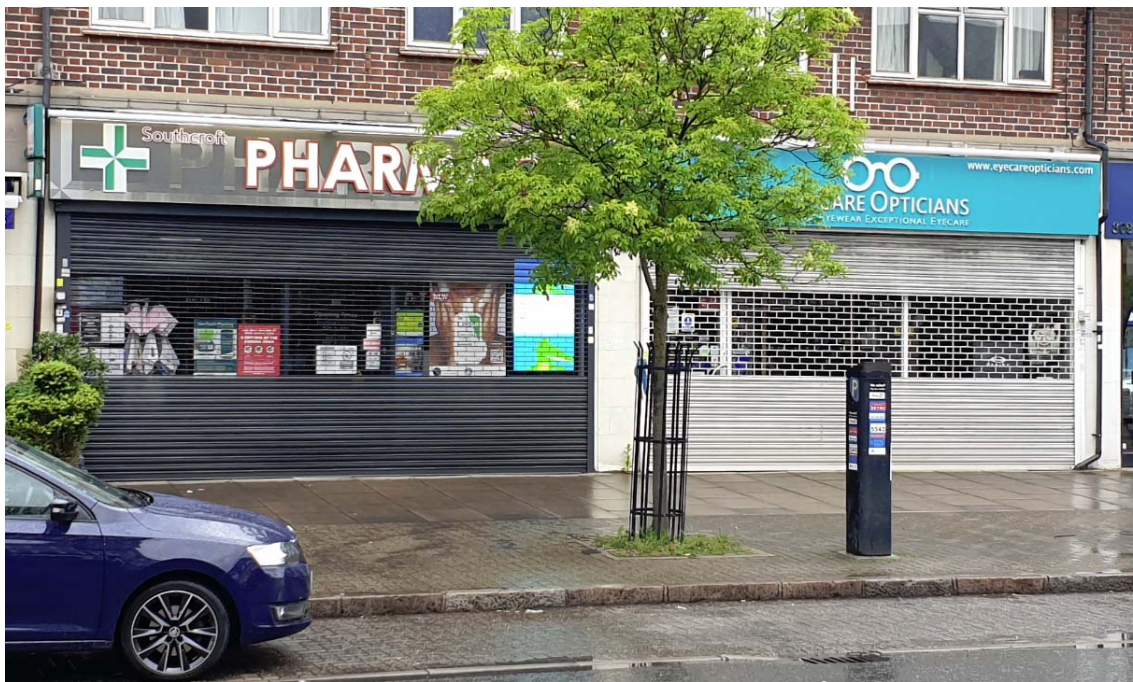


Fig 2. 305 & 307 Richmond Road `Pharmacy & Eyecare Opticians` both external security shutter systems to shopfront with partial brick vision sections.