

REVISION DETAILS			DATE	DRAWN BY
P 1	UPDATED LAYOUTS		05.04.19	DMA
P 2	UPDATED LAYOUTS TO DESIGN TEAM		29.08.19	DMA
P 3	STAGE 3 ISSUE		11.09.19	DMA
P 4	REVISED STAGE 3 ISSUE		12.09.19	DMA
P 5	VALUE ENGINEERING UPDATES		17.09.19	DMA
P 6	FURTHER DMA VALUE ENGINEERING		24.09.19	DMA
P 7	S2 ISSUE FOLLOWING VE EXERCISE		27.09.19	DMA
P 8	ADDITIONAL DEMOLITION TO NO 63		30.09.19	DMA
P 9	ISSUE FOR PLANNING		17.01.20	DMA
P 10	STAGE 3 ISSUE POST PLANNING		14.02.20	DMA
P 11	PLANNING ISSUE		16.03.21	DMA
P 12	OBSCURED GLAZING		24.05.21	DMA



5 ELEVATION
STREET ELEVATION 1 : 100

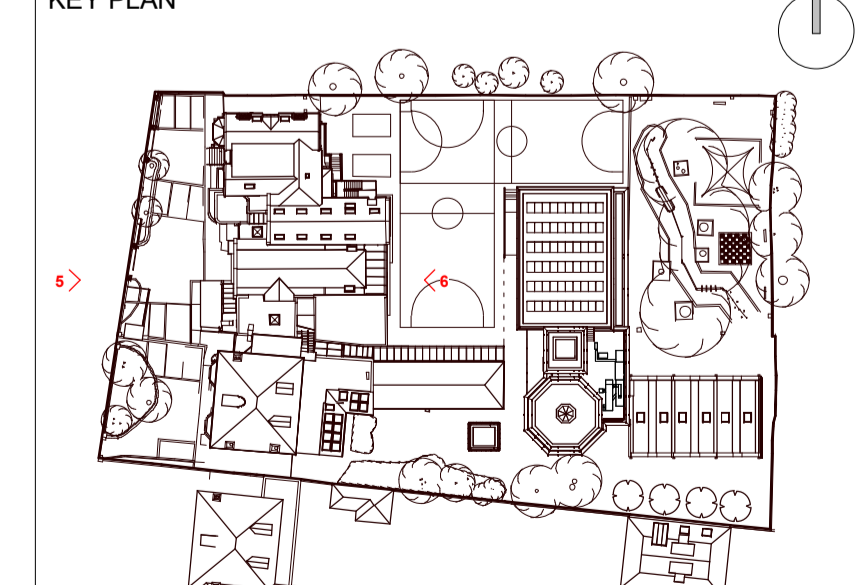


6 ELEVATION
COURTYARD - EAST ELEVATION 1 : 100

- LEGEND:**
- OBSCURED GLAZING HATCH
- MATERIAL PALETTE:**
- RED BRICK (RUNNING BOND) TO MATCH EXISTING
 - RED BRICK (SOLDIER COURSE) LINTEL
 - BUFF BRICK (RUNNING BOND) TO MATCH EXISTING
 - VERTICAL RED BRONZE COLOURED METAL CLADDING
 - RED CLAY TILES TO MATCH EXISTING
 - RECONSTITUTED STONE SURROUNDS
 - CREAM RENDER
 - OBSCURED GLAZING
 - ANODIZED ALUMINIUM DOOR / WINDOW FRAMING. COLOUR: RAL 8029 'PEARL COPPER'
 - ANODIZED ALUMINIUM RAILINGS. COLOUR: RAL 8029 'PEARL COPPER'



KEY RESIDUAL RISK



ORIGINATOR DMA	TITLE PROPOSED ELEVATIONS	STATUS: S2	REVISION: P12
PROJECT KING'S HOUSE SCHOOL 48 KING'S ROAD RICHMOND TW10 6ES	PURPOSE OF ISSUE FOR INFORMATION	CHECKED KvdS	APPROVED DMA
JOB NO. 515	SCALE 1:100@A1	DRAWN MF	ROLE DR
PROJECT KHS	ORIGINATOR DMA	VOLUME XX	DOC NO 04102