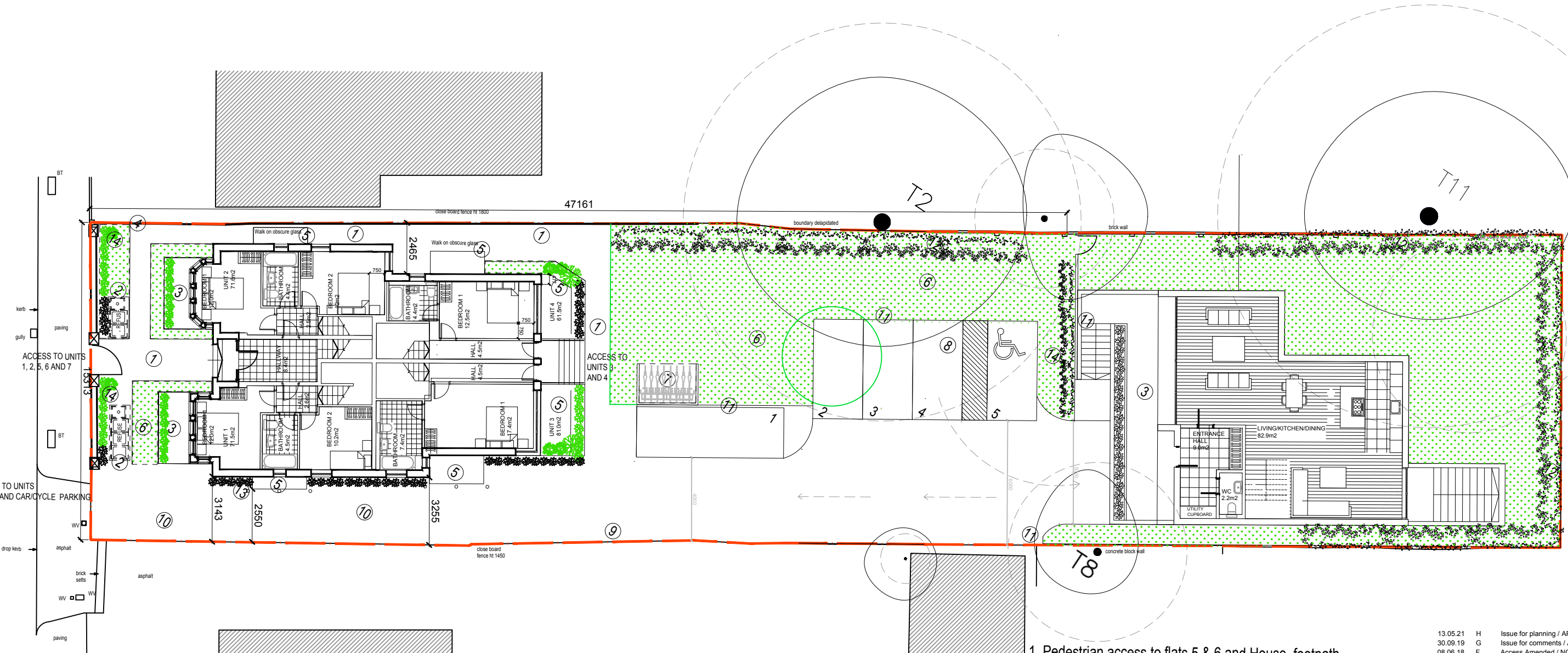


NOTES

- The Copy right of this drawing is the property of Create and must not be copied otherwise reproduced without written consent.
- The contractor is responsible for checking dimensions, tolerances and references. Any discrepancy to be verified with the Architect before proceeding with the works.
- Do not scale drawing. Figured dimensions to be worked to in all cases.

FOR PLANNING

KINGSTON ROAD



1. Pedestrian access to flats 5 & 6 and House, footpath
2. Bin store
3. Open lightwell (not covered)
4. Lightwell covered with toughened obscure glass panel
5. Lightwell/Terrace
6. Shared amenity space
7. Covered cycle parking
8. Car parking
9. Boundary
10. Vehicle access, gravel drive
11. Fence
12. Screening by Conifers (or similar planting)
13. Bollard
14. Hedge 750mm high

13.05.21	H	Issue for planning / AP / MW
30.09.19	G	Issue for comments / AP / MW
08.06.18	F	Access Amended / NC / MW
13.05.18	E	Minor Amendment / NC / MW
23.04.18	D	Issue for planning / NC / MW
30.01.17	C	Issue for planning / PG / MW
10.11.16	B	Issue for comments / PG / MW
26.10.16	A	Issue for comments / PG / MW

date	rev	revision/author/checker
------	-----	-------------------------

client	Midco Holdings Ltd
project	217 Kingston Road
drawing	PLANNING APPLICATION PROPOSED SITE PLAN

drawing no	240 2 PL(10) P00	rev	H
drawn	PG	checked	MW
scale @ A3	1:200	date	30.01.2017

CREATE
DESIGN + ARCHITECTURE
Wiggleworth House,
69 Southwark Bridge Road, London SE1 9RH
T: +44 (0)20 7021 0267
www.create-design.org

