



## **TRANSPORT / USE STATEMENT**

### **Proposed Extension to Existing Sand Arena**

Ham Polo Club, Petersham Road, Petersham, Richmond, TW10 7AH

This statement will discuss the activities that are proposed to be undertaken on the extended sand arena and will address the impact of the use with particular regard to vehicular and pedestrian traffic to and from the site.

#### **Existing Vehicular Access to the Site**

Ham Polo Club Club is currently accessed by vehicles from A307 Petersham Road, a single carriageway road with a 30mph speed limit. The junction from the A307 feeds onto an unadopted road which the club shares with the adjacent German School and Park Lane Stables. The unadopted road is a single carriageway and forms part of a well organised, one way system which travels from east to west until it reaches the south east corner of the Polo Club.

Upon arrival at the south east corner of the club, spectators' vehicles travel to the west across the south side of Polo Ground 1 and park adjacent to the track, as is shown on the accompanying site plan. Spectator vehicles are limited to match days only, when they are marshalled by club staff and clear signage. Spectator vehicles are not permitted by the club anywhere else on the site.

Upon entering the site from the same south east corner, club staff, members, players and livery staff drive north along the eastern edge of Polo Ground 1. They will then proceed to dedicated parking areas to the north of Polo Ground 1 to dedicated vehicle parking areas.

A robust vehicle management plan and system is implemented during busy times in order to ensure the safety of the horses, players and visitors alike, and there have been no incidents or injuries relating to vehicular movement on the site. A copy of the management plan is attached to this report.

#### **Vehicular Numbers and Uses**

Due to the Polo season and current facilities of the club, any substantial vehicular movement to and from the site is limited to the summer months of April - September. The following table shows the typical number of cars during these months.

<b>Day</b>	<b>Morning</b>	<b>Afternoon</b>
Monday	7	8
Tuesday	12	20
Wednesday	10	8
Thursday	12	20
Friday	10	8
Saturday	10	24
Sunday	12	28

The table above only includes for members, players, club staff and livery staff and excludes spectators. As previously discussed, spectators are restricted to parking on the south side of the club.

Polo matches are played on Saturdays and Sundays, and Chukkas are played on Tuesday and Thursday evenings. The club has a very strict pre-booking policy for all of its events, which means that the capacity of the site is never breached which ensures that vehicular movements to and from the site are manageable.

The club also hosts private events, which are typically held on Fridays or at weekends, and can include weddings, parties, corporate experiences etc. Traffic to these events are controlled under the same management plan, and are restricted to summer months.

The club is 5 minutes walk from Richmond Tube Station, and the Number 65 bus stops outside the club gates. The club uses their website to promote these sustainable methods of transport, and to encourage less vehicular traffic.

Currently, during the winter months the number of vehicles accessing the site is significantly reduced to just 1 or 2 staff members, and a handful of livery staff and visitors to the riding school.

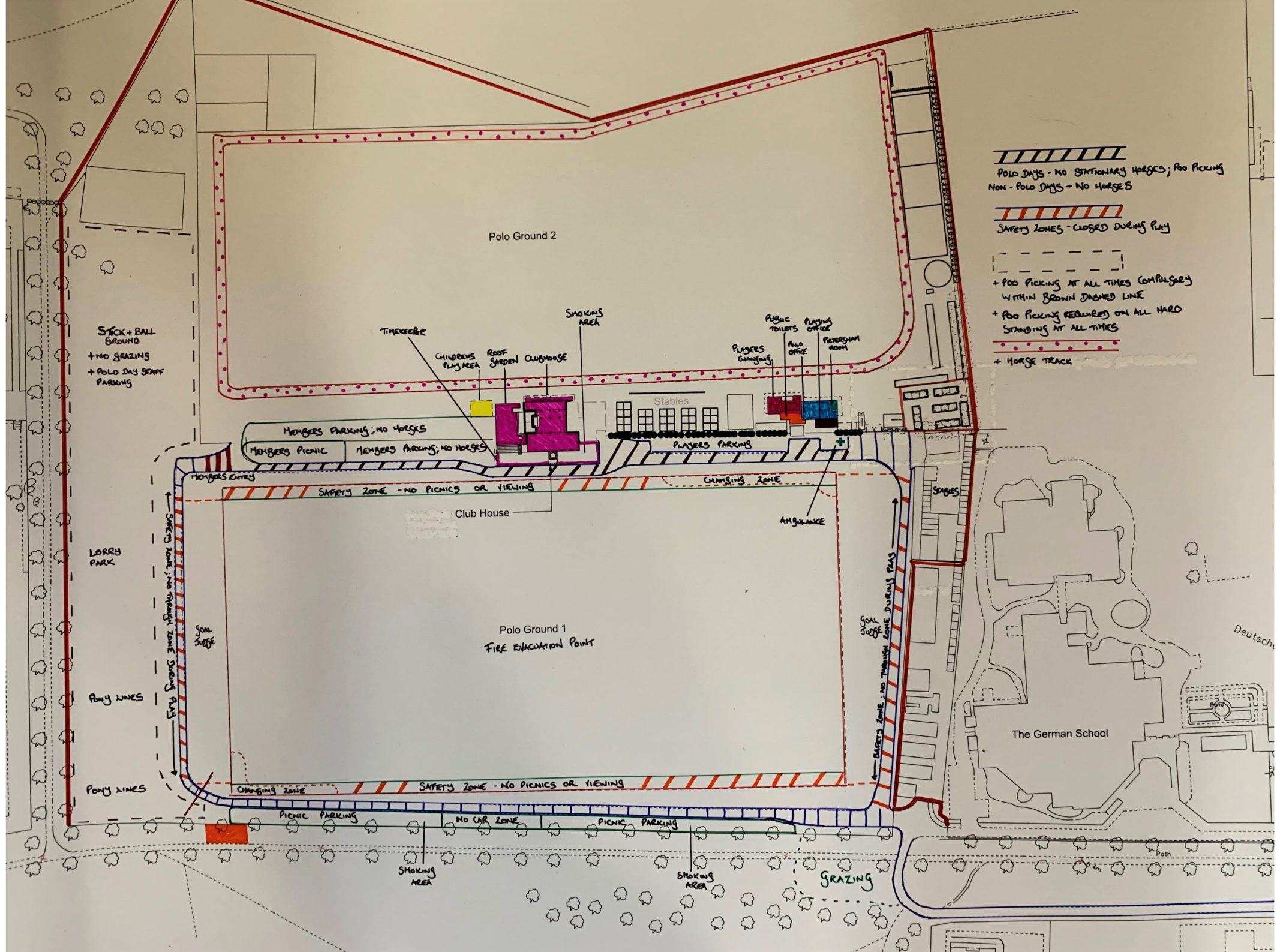
### **The Proposal**


The planning application seeks approval for an extension to the existing sand arena to the North West edge of the club. Whilst the current arena is used for riding lessons and schooling, the extended arena will facilitate other equestrian disciplines such as show jumping and dressage. The extended arena will also be used for a winter polo season, with midweek afternoon chukkas and Saturday and Sunday polo matches.


The new arena will enable the club to offer the same amount of polo and equestrian activities that are currently restricted to the summer months, all year round. As such this will mean that any increase in traffic will be during the winter months only, and will not exceed

the numbers described earlier in this report for the summer months. The club has a very robust traffic management plan in place and this will be reviewed and rolled out during the winter months in order to include the traffic generated by the extended sand arena.

Spectator numbers to the site will continue to be closely managed via the club's ticketing system, but it is envisaged that spectator numbers will be far fewer in the winter months than during the summer.




  
 POLO DAYS - NO STATIONARY HORSES; POO PICKING
   
 NON - POLO DAYS - NO HORSES


  
 SAFETY ZONES - CLOSED DURING PLAY

- + POO PICKING AT ALL TIMES (COMPULSORY) WITHIN BROWN DASHED LINE
- + POO PICKING REQUIRED ON ALL HARD STANDING AT ALL TIMES
- + HORSE TRACK

Polo Ground 2

Polo Ground 1  
FIRE EVACUATION POINT

The German School

STICK + BALL GROUND  
 + NO GRAZING  
 + POLO DAY STAFF PARKING

MEMBERS PARKING; NO HORSES  
 MEMBERS PICNIC  
 MEMBERS PARKING; NO HORSES

Stables

PLAYERS PARKING

Club House

Stables

LORRY PARK

PONY LINES

PONY LINES

PICNIC PARKING

NO CAR ZONE

PICNIC PARKING

SMOKING AREA

SMOKING AREA

GRAZING

Path

Deutsch