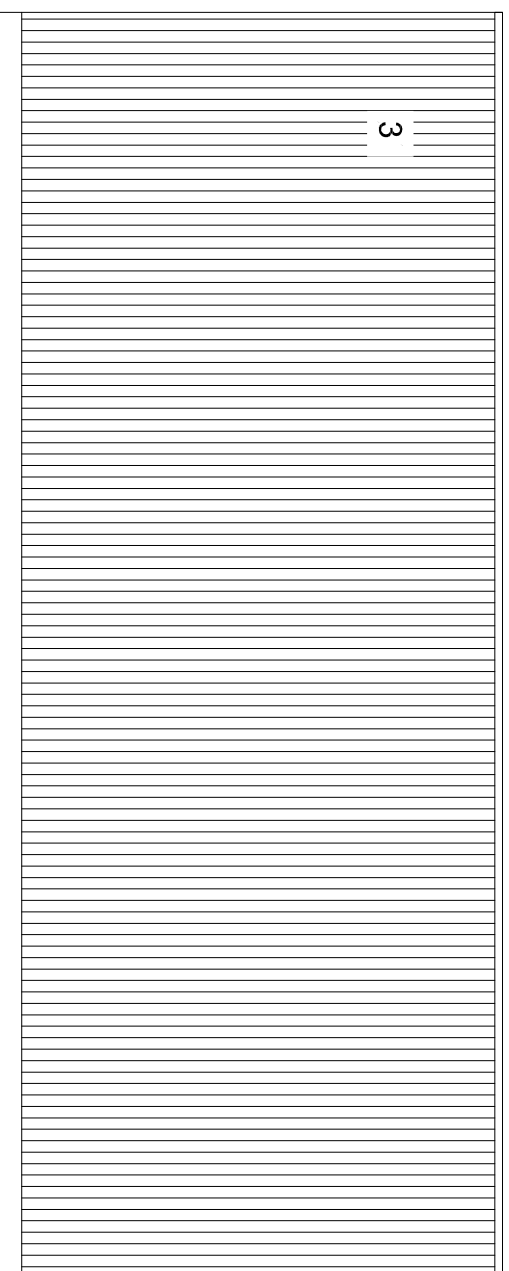
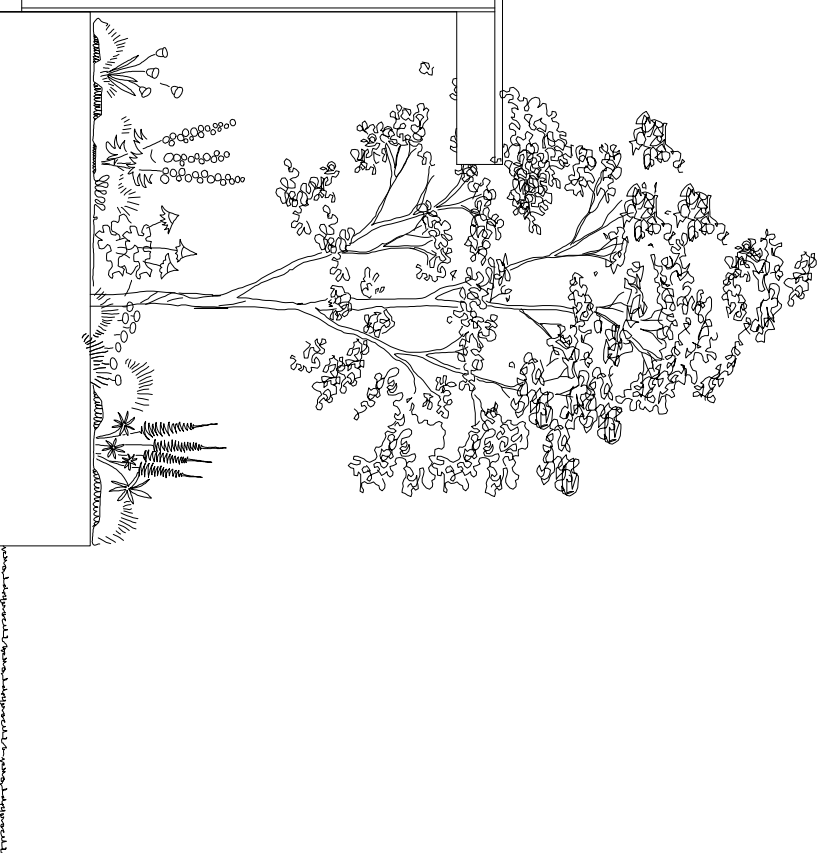


16018/155/01
GARDEN ROOM EAST ELEVATION
1:50



16018/155/02
GARDEN ROOM SOUTH ELEVATION
1:50



- GENERAL NOTES**
1. This drawing is copyright and must not be reproduced without the consent of GDL Architecture
 2. All dimensions are in millimeters unless otherwise noted.
 3. Do not scale from this drawing - if in doubt ask.
 4. All dimensions to be checked on site prior to commencement of work or preparation of shop/fabrication drawings.
 5. The contractor shall report any discrepancies in information in writing to the design team at the earliest opportunity.
 6. This drawing is to be read in conjunction with the following relevant information:
 - i) All architects, structural and service engineer's drawings and specifications.
 - ii) All CDM Information including designers risk assessments.

- 1 Aluminum windows / doors with horizontal bands - critical style - dark grey frame
- 2 PPC cladding - dark grey
- 3 Natural undressed feather edge timber cladding
- 4 Painted timber double doors - dark grey
- 5 Dressed vertical timber slats

revision	notes	status	date	author	reviewer
P04	Trees updated	S2	04/08/2021	MB	-
P03	Planning Issue	S2	13/05/2021	MB	-
P02	Planning Issue	S2	05/05/2021	MB	-
P01	Planning Issue	S2	30/04/2021	MB	-

gdlarchitecture

Unit 4, Woods pottery, Stepney Bank, Newcastle NE1 2NP
t: (0191) 447 1775 www.gdlarchitecture.co.uk

Project:

18 East Sheen Avenue

Drawing: Garden Room Elevations 1 of 2

Dwg No.	16018_155		
1:50	16 018		
A3	Preliminary	S2	P04

Do not scale. This drawing is copyright