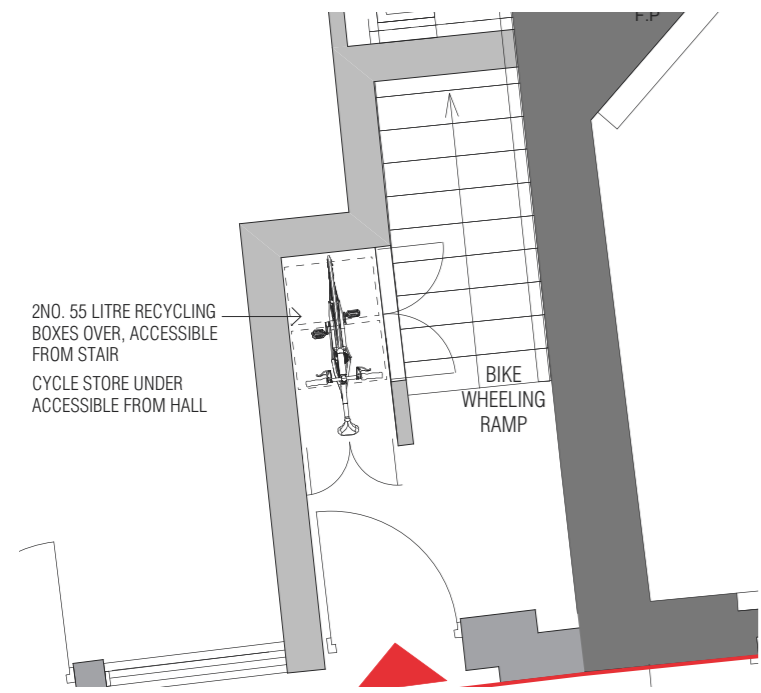
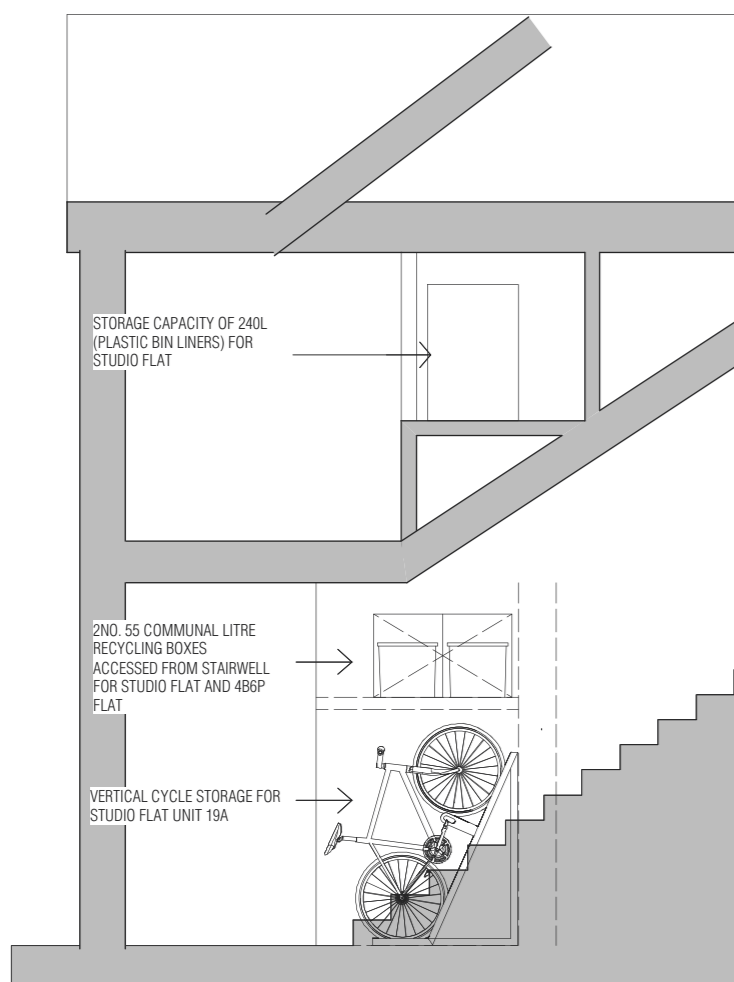


FIRST FLOOR PLAN REFUSE STORAGE (BIN BAGS)

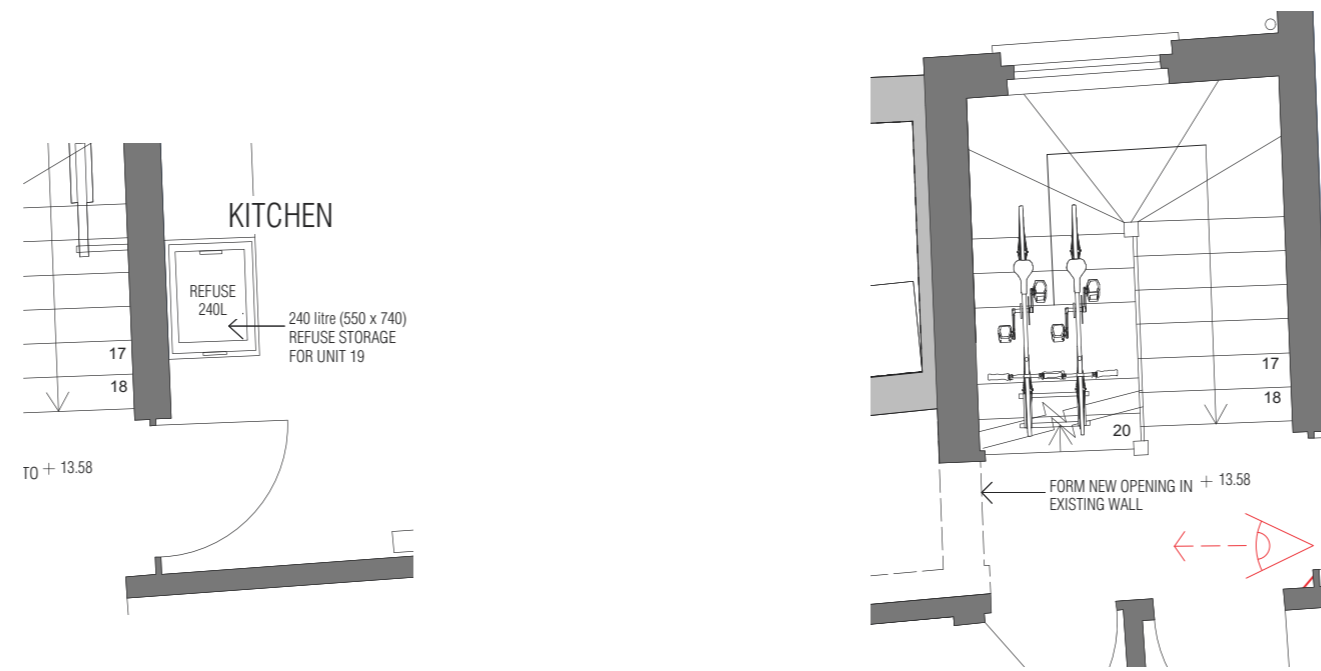


GROUND FLOOR PLAN REFUSE AND RECYCLING



SECTION A-A
19A KING STREET

1:50 SCALE BAR 0 1m 2m 5m

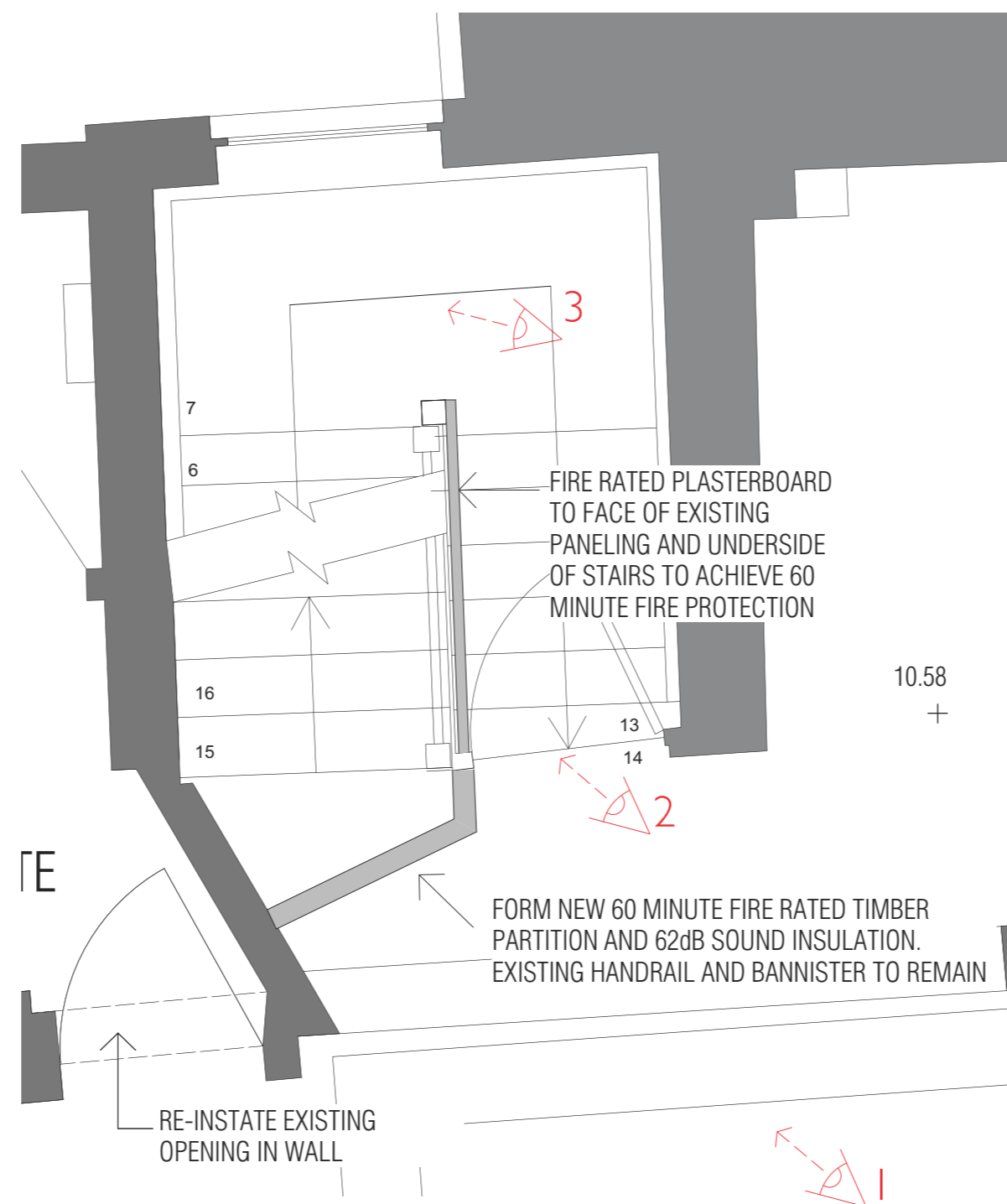


FIRST FLOOR PLAN - REFUSE STORAGE

FIRST FLOOR PLAN - PROPOSED BIKE STORAGE
SEE ALSO DRAWING NUMBER KSR -16

1:50 SCALE BAR

0 1m 2m 5m



PROPOSALS FOR EXISTING STAIRCASE GROUND FLOOR PLAN

19 KING STREET

1:25 SCALE BAR

0 1 2 3



VIEW 4 NEW OPENING TO BE MADE IN EXISTING WALL



VIEW 3 UNDERSIDE OF EXISTING STAIRS TO BE CLAD IN PLASTERBOARD TO ACHIEVE 60 MIN FIRE PROTECTION



VIEW 1 NEW 60MIN FIRE RATED PARTITION TOP TO BE INSTALLED ACROSS EXISTING OPENING AT FOOT OF STAIRS



VIEW 2 EXISTING STAIR PANEL TO BE CLAD IN PLASTERBOARD TO ACHIEVE 60 MIN FIRE PROTECTION



SEMI VERTICAL CYCLE RACK
EXAMPLE

REFUSE STORAGE CAPACITY (for developments with individual refuse containers)

- Storage capacity of 240L for refuse per household in each unit
- Storage capacity for two 55 litre recycling boxes off common stairwell

BICYCLE STORE CAPACITY:

- Long stay spaces - no. 3
- 2 x bicycles on platform in stairs in Unit 19
- 1 x bicycle in communal hall

PLANNING

Project 19 & 19A KING STREET, RICHMOND		
Drawing LISTED BUILDING WORKS, REFUSE, RECYCLING AND BICYCLE PROVISION		
Drawing No. KSR-12C	Scale 1:25, 1:50 @ A2	Date 08.12.2020

CLIVE CHAPMAN
ARCHITECTS
SUSTAINABILITY CONSULTANTS
4 EEL PIE ISLAND
TWICKENHAM MIDDX
TW1 3DY
TELEPHONE 020 8891 4837
EMAIL INFO@CCAR.CO.UK
WEBSITE WWW.CCAR.CO.UK