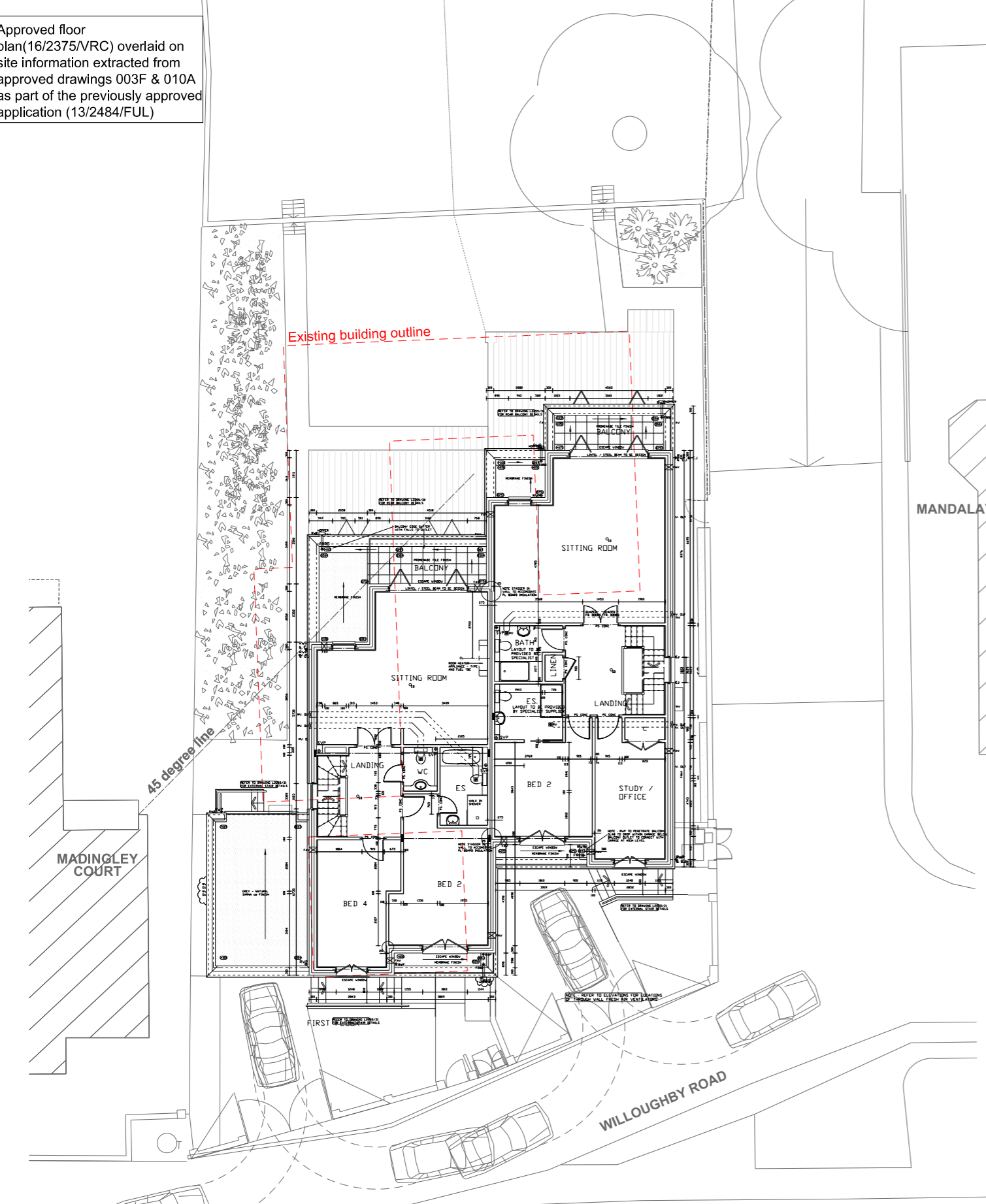
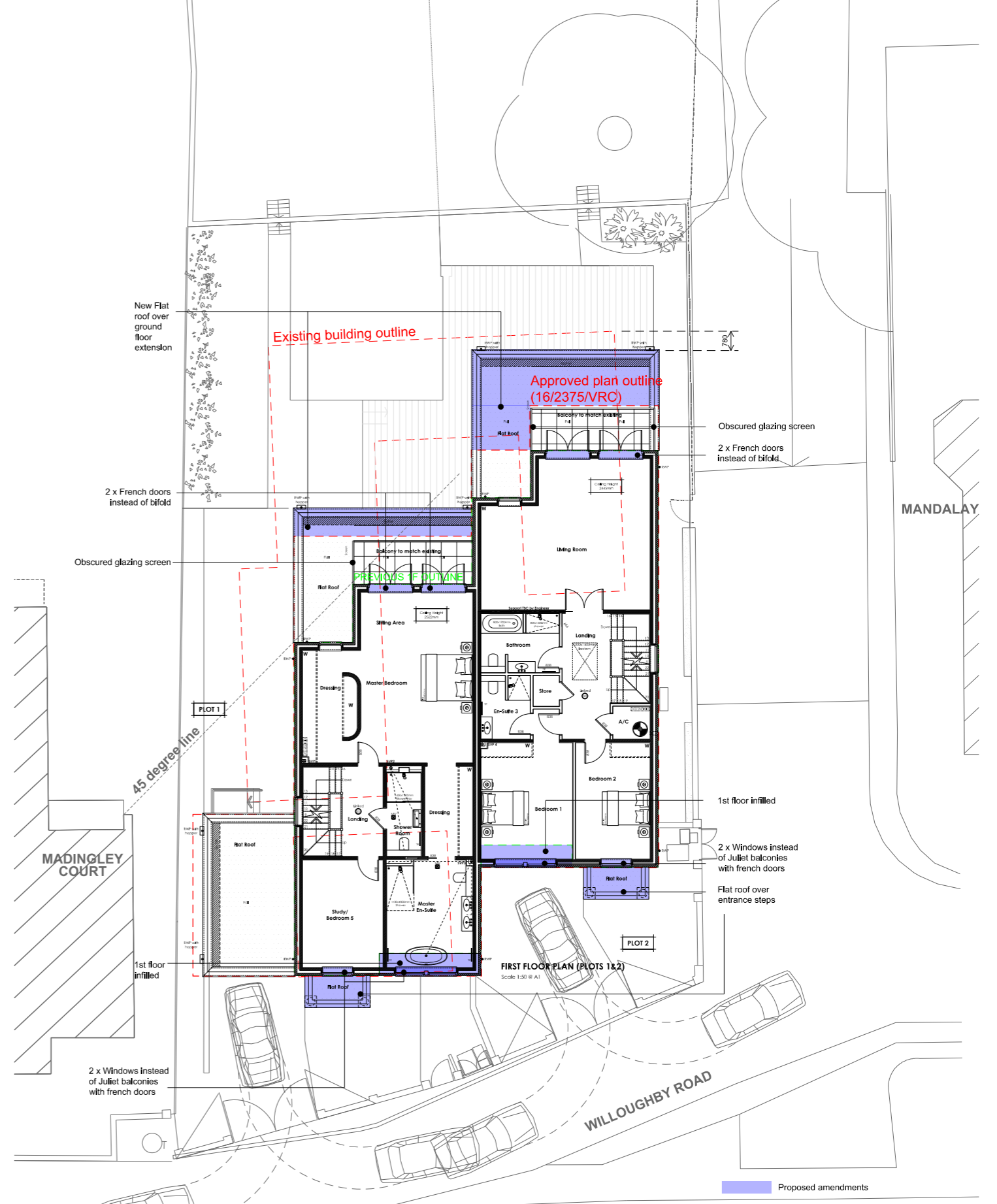


Approved floor plan(16/2375/VRC) overlaid on site information extracted from approved drawings 003F & 010A as part of the previously approved application (13/2484/FUL)



**01** Approved Plan 16/2375/VRC First Floor 1:200



**02** Proposed Plan First Floor 1:200

**Jo Cowen Architects**  
533 Kings Road  
Chelsea  
London SW10 0TZ



**Disclaimer**  
Jo Cowen Architects takes no responsibility for any dimensions that are obtained by scaling this drawing. If no dimension is given, it is deemed to be the responsibility of the contractor to ascertain the dimension from site measurement before any fabrication takes place. All copyright for information included on this drawing remains with Jo Cowen Architects

Revision	Date	Description
A	04/01/21	PLANNING REVISION A

**Description**  
Proposed amendments to the approved application (13/2484/FUL) & the subsequent approved variation of the drawings (16/2375/VRC) to demolish "The Bungalow" and "The Annexe" on Willoughby Road, London and to construct a pair of semi detached three storey houses with garages, access, forecourt, bin stores, landscaping and ancillary works.

**Drawing Purpose**  
PLANNING

**Project**  
Willoughby Road

**Drawing Date**  
17/07/20

**Revision Date**  
04/01/21

**Revision**  
A

**Drawing Title**  
Proposed First Floor Plan

**Drawing Number**  
JCA-0721-02-PP-1F

**Scale @ A3**  
1:200