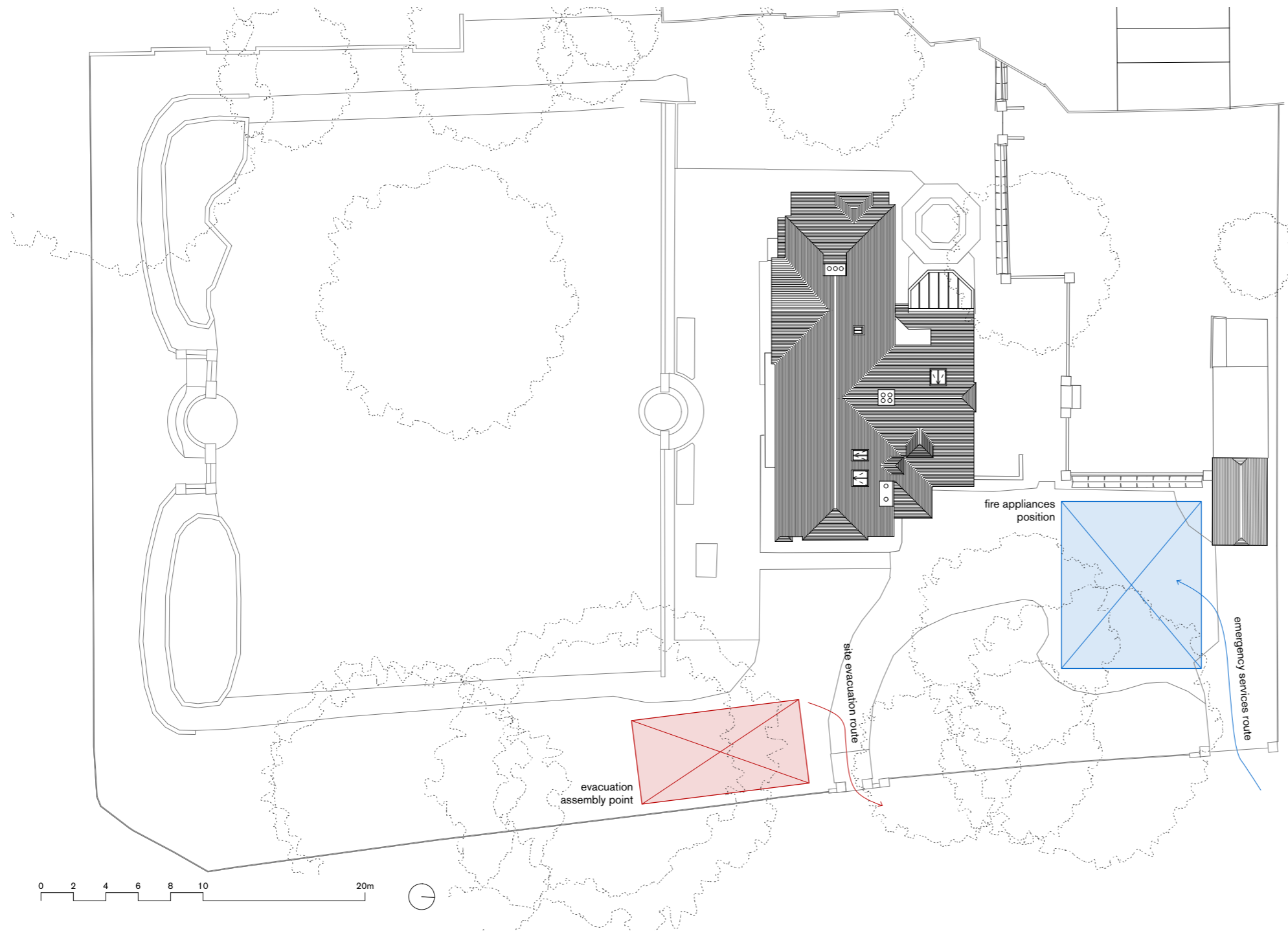


# Sheengate

Fire Safety Strategy  
*for submission to Richmond Council*

## **Contents**

1. **Outside Space**
2. **Fire Safety Measures**
3. **Means of Escape**
4. **Evacuation Strategy**
5. **Access and Equipment**



## 1. Outside Space

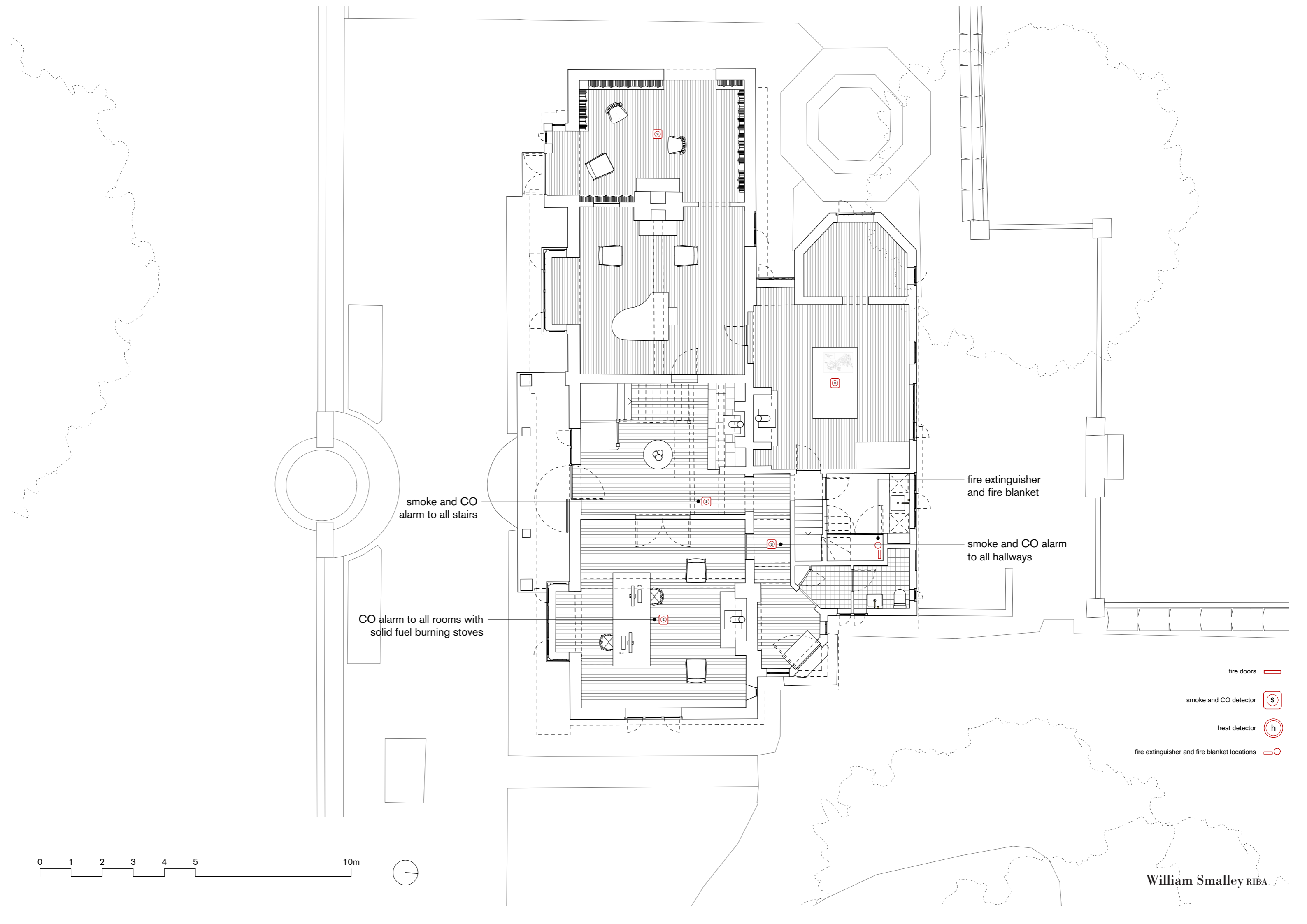
- 1.1 An area has been allocated for fire and rescue pumping appliances to be sited in case of a fire. The position gives best access for appliances, and is clear of any obstacles.
- 1.2 A Fire Assembly Point has been marked inside the site boundary and away from the vehicle entrance. This is to ensure a clear route for emergency services, and to provide a safe distance for occupants to gather away from the building.
- 1.3 The proposed Assembly Point allows for a safe 10 metre distance from the house, and is adjacent to a gate that exits onto Sheen Lane.



1. *Sheengate* view from south

## 2. **Fire Safety Measures**

- 2.1 Active & Passive Fire Protection will be put in place throughout the building to ensure the safety of occupants:
- Mains wired smoke & CO alarms will be fitted where necessary, as indicated
  - Mains wired CO alarms will be fitted in rooms with solid fuel burning stoves
  - Mains wired heat detector will be fitted in attic rooms
  - A fire extinguisher and fire blanket will be easily accessible in case of emergency
  - Fire doors are to be fitted to the between first and second floor, with intumescent smoke strips to inhibit smoke distribution



smoke and CO alarm to all stairs

CO alarm to all rooms with solid fuel burning stoves

fire extinguisher and fire blanket

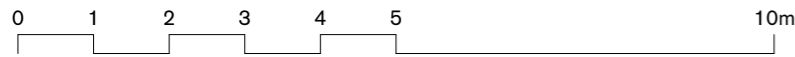
smoke and CO alarm to all hallways

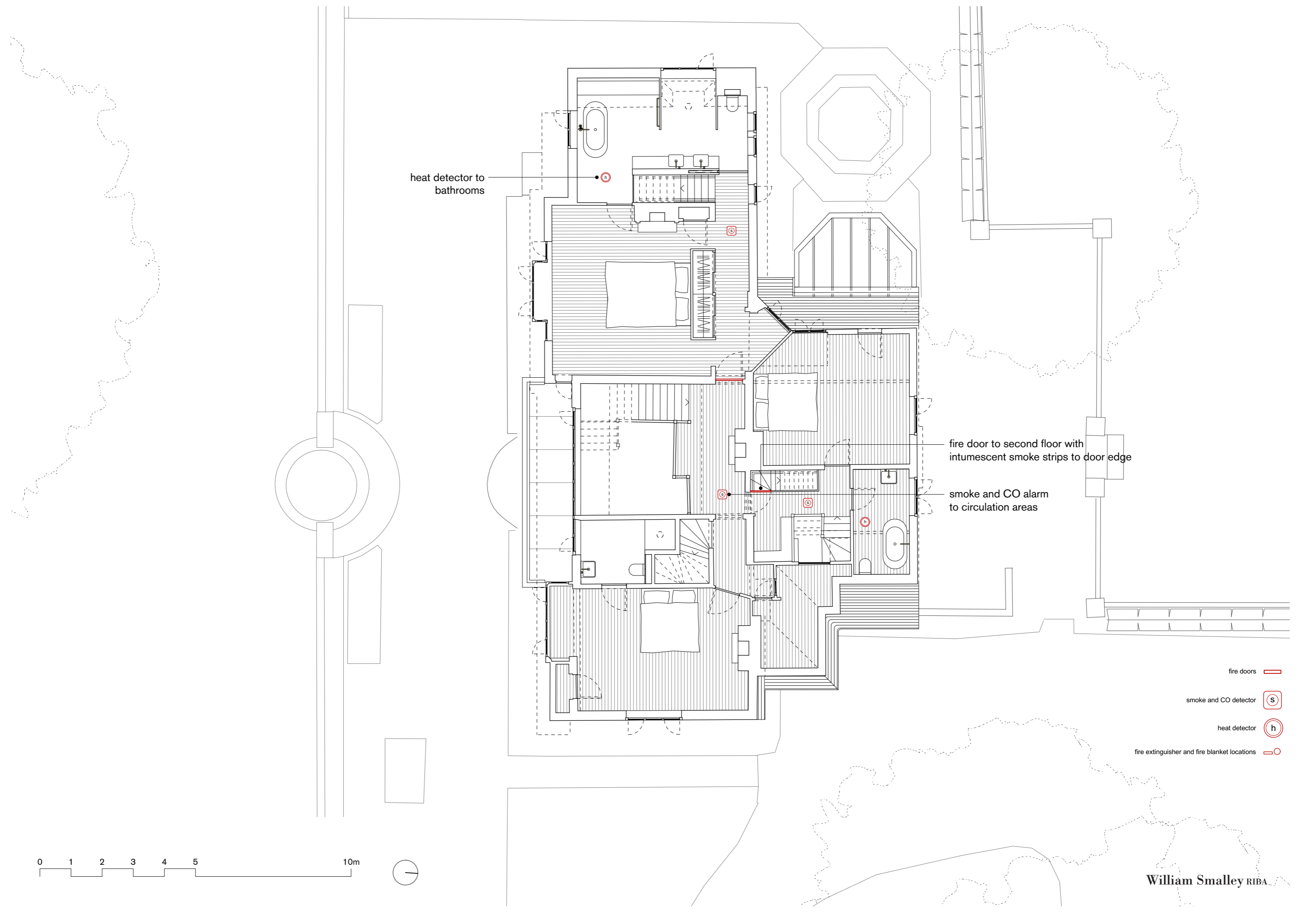
fire doors

smoke and CO detector

heat detector

fire extinguisher and fire blanket locations





heat detector to  
bathrooms

fire door to second floor with  
intumescent smoke strips to door edge

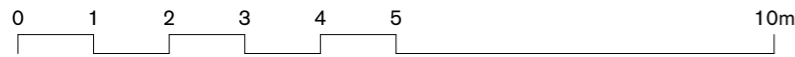
smoke and CO alarm  
to circulation areas

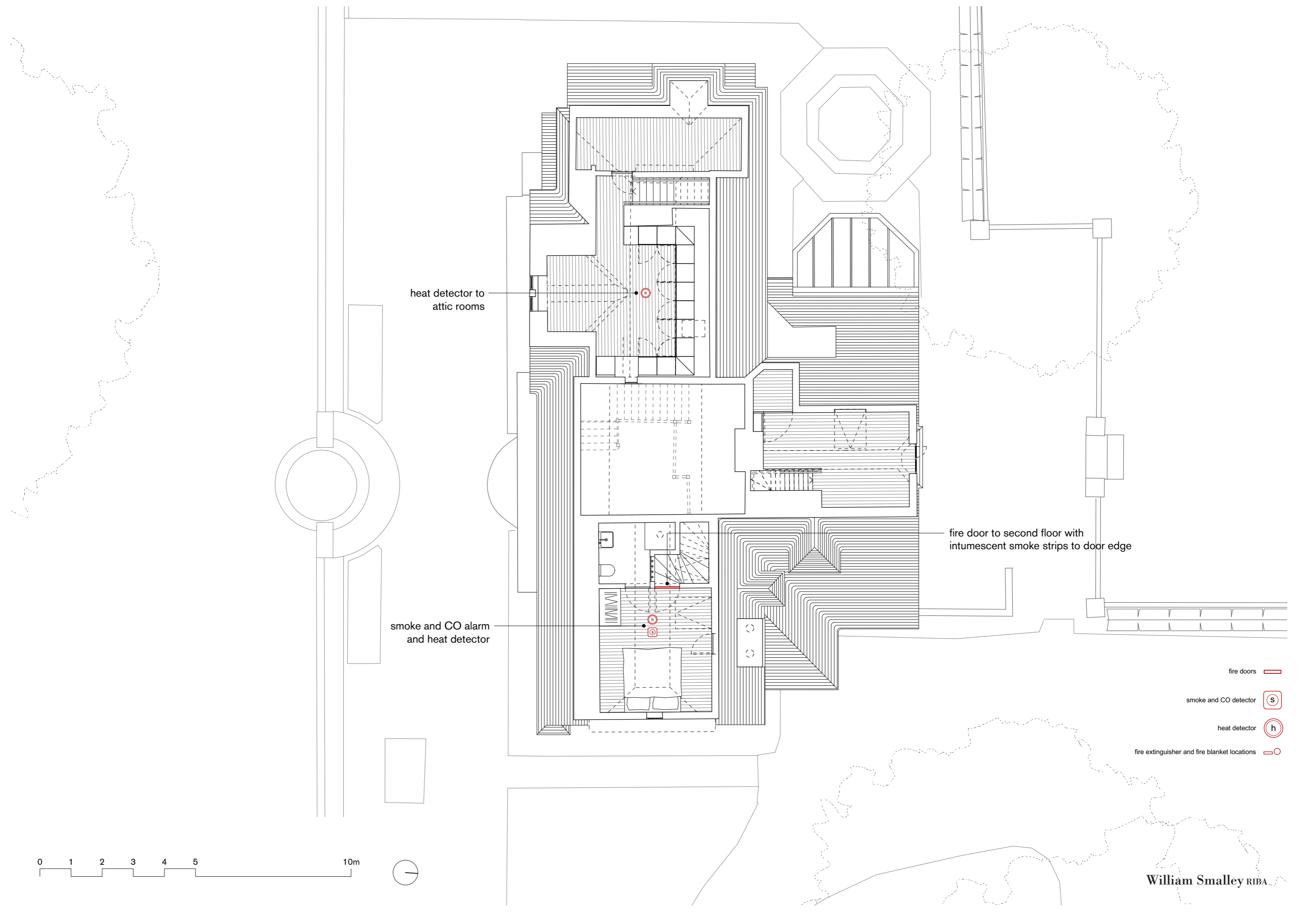
fire doors

smoke and CO detector

heat detector

fire extinguisher and fire blanket locations





heat detector to  
attic rooms

smoke and CO alarm  
and heat detector

fire door to second floor with  
intumescent smoke strips to door edge

fire doors

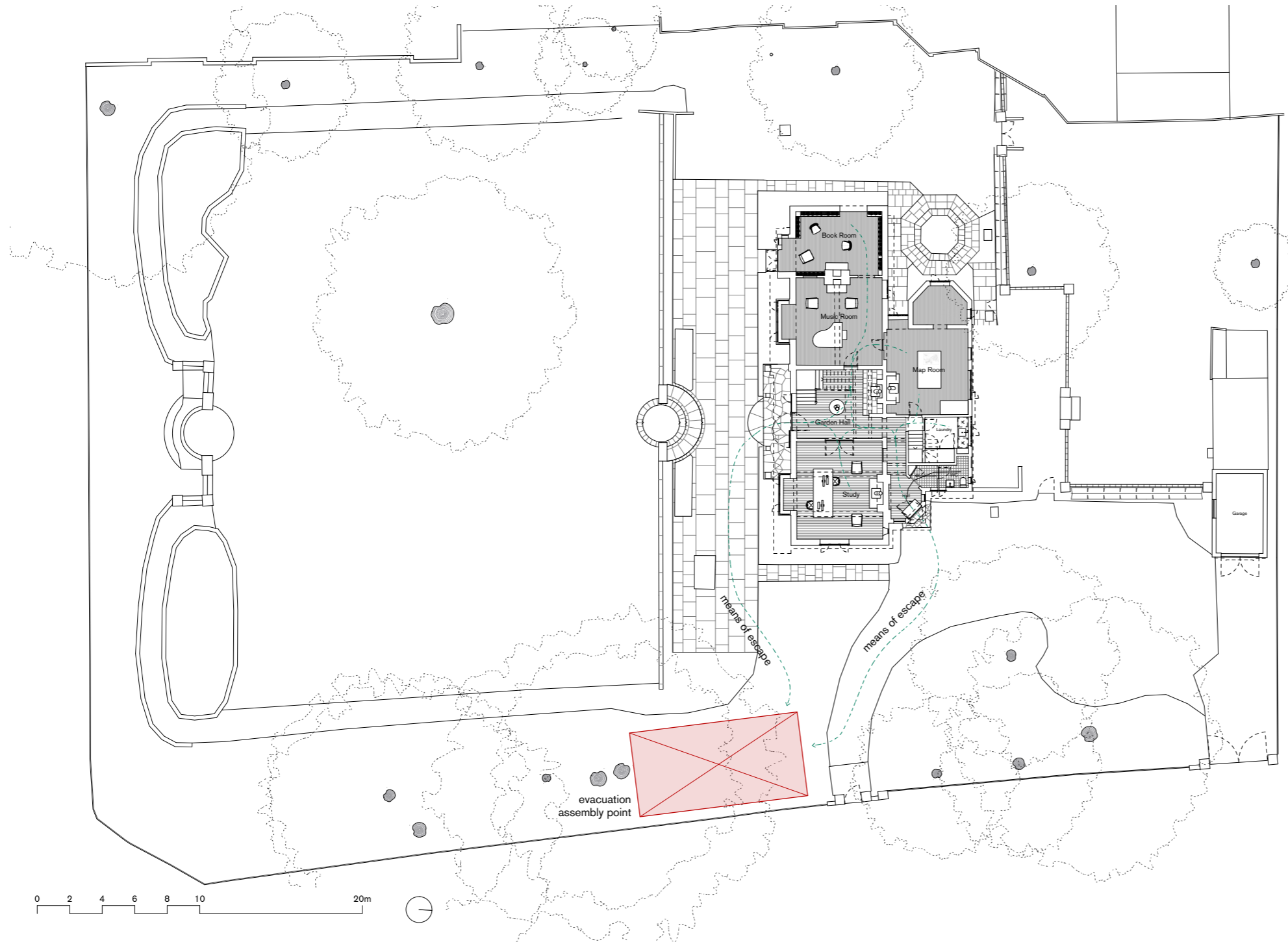
smoke and CO detector

heat detector

fire extinguisher and fire blanket locations

0 1 2 3 4 5 10m

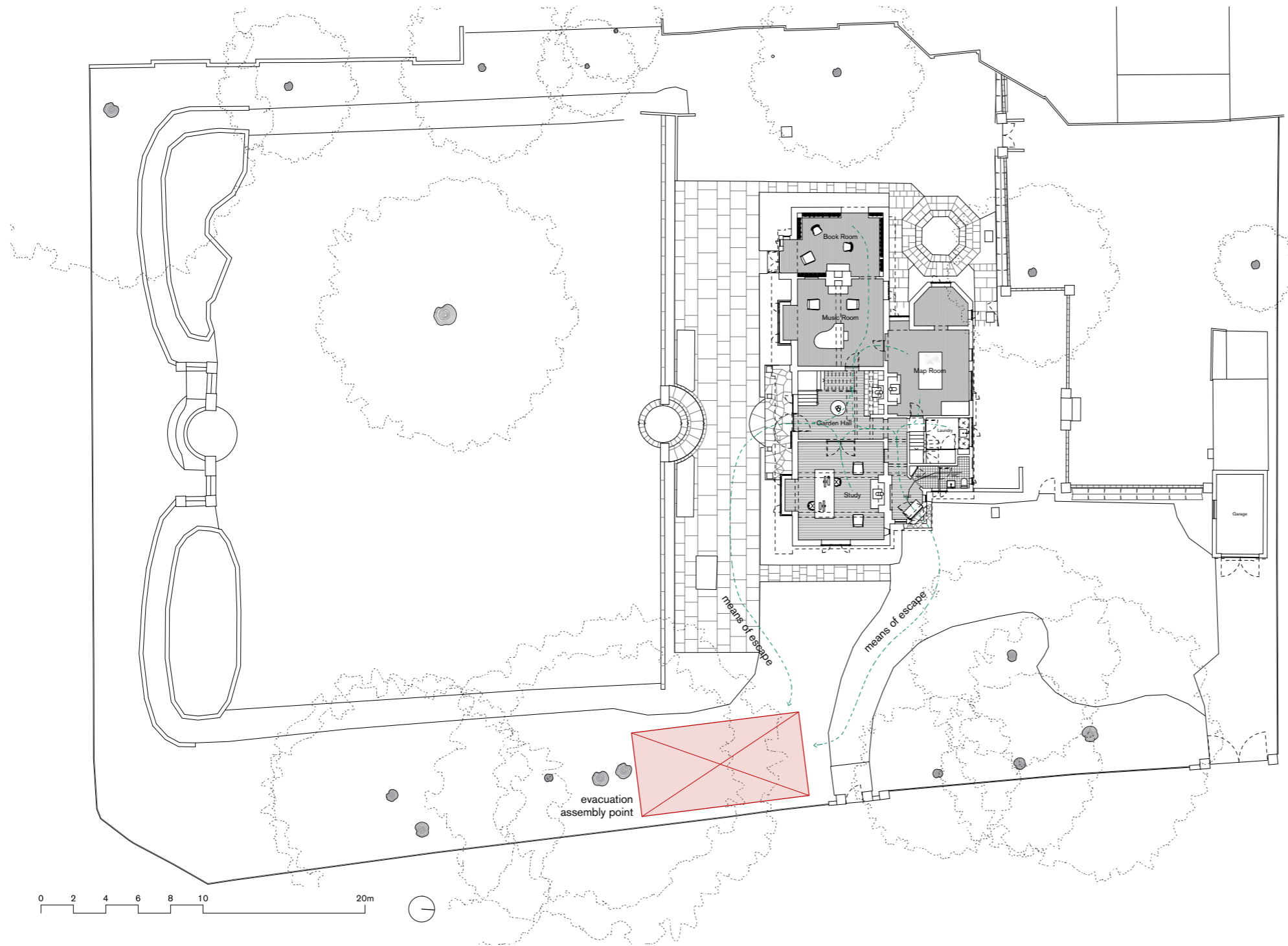




### 3. Means of Escape

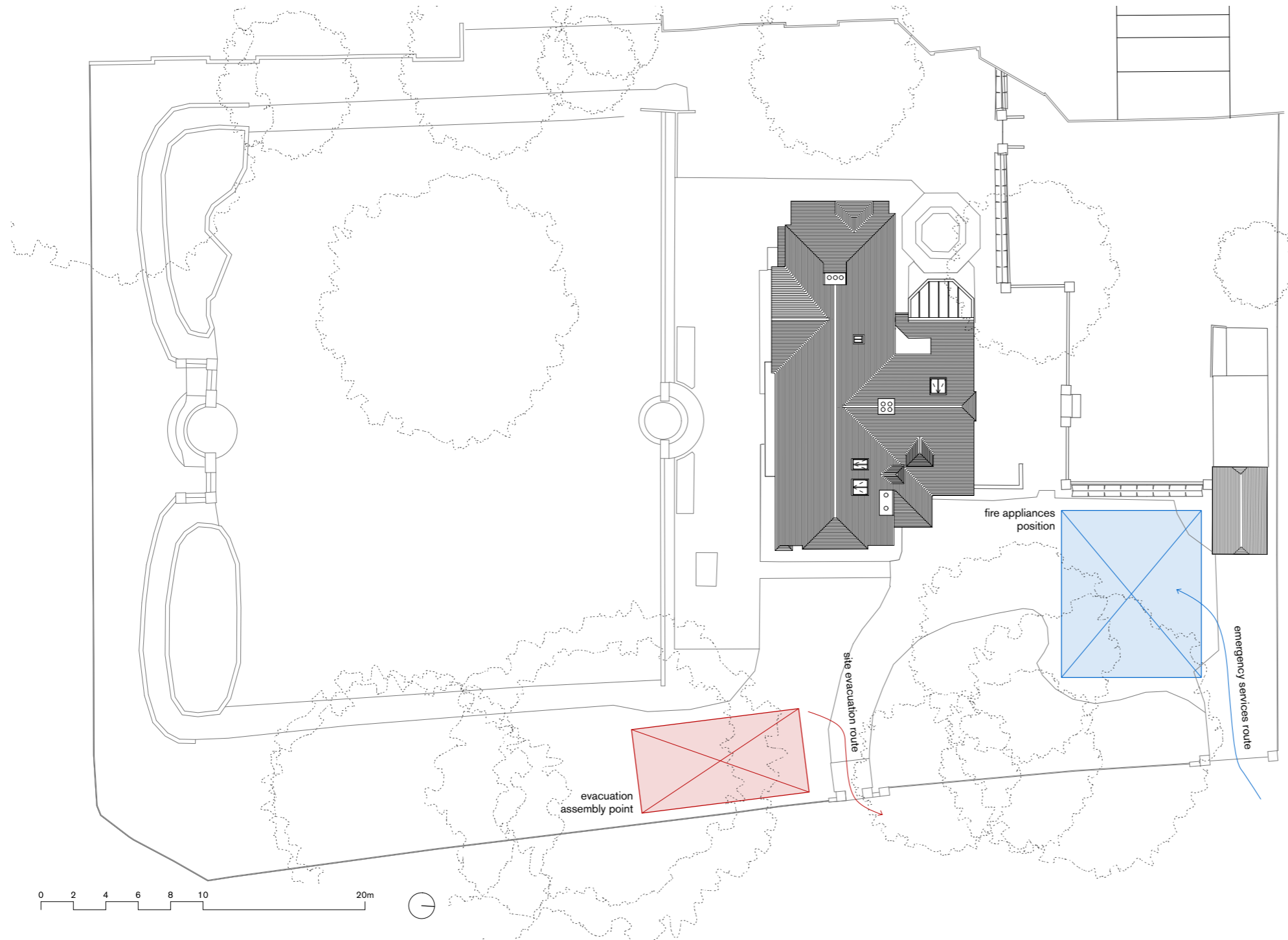
- 3.1 External doors provide adequate means of escape for the occupant, which open to the south and east in the direction of the Fire Assembly Point.
- 3.2 There is a clear open route from the building to the Fire Assembly Point.





## 4. Evacuation Strategy

- 4.1 An evacuation strategy has been put in place and will be reviewed every five years for the lifetime of the building.
- 4.2 Fire Evacuation Strategy:
- Upon seeing a fire, or hearing the fire alarm, all occupants should leave the building through the designated means of escape
  - If there are any person(s) who are unaware of the fire or unable to hear the alarm, they should be informed immediately and told to evacuate
  - Occupants should follow the route shown on the Means of Escape Plan and meet at the Fire Assembly Point
  - The emergency services should be called once in the Fire Assembly Point, and occupants should wait there until services arrive, unless it becomes unsafe



## 5. Access and Equipment

- 5.1 An area has been allocated for fire and rescue pumping equipment to be sited in case of a fire.
- 5.2 An external water tap will be located to the front of the main house, accessible from the front garden to assist emergency services if necessary.
- 5.3 Access to the front garden and house will be possible through the vehicular entrance on Sheen Lane. Access to the south can be achieved via the drive and around the east side of the house.