

Appendix D
Landscape Drawings

Landscape Drawings

Appendix D: Landscape Drawings

Twickenham Riverside | Design & Access Statement



- KEY**
- PLANNING APPLICATION BOUNDARY
 - EXISTING LEVELS
 - PROPOSED LEVELS
- HARDWORKS**
- PAVING TYPE 01 - MEDIUM SIZED MODULES OF NATURAL STONE TO FOOTWAYS
 - PAVING TYPE 02 - SMALL SIZED NATURAL STONE TO SHARED SURFACES
 - PAVING TYPE 03 - LARGE SIZED NATURAL STONE TO SQUARE
 - PAVING TYPE 04 - IN-SITU EXPOSED AGGREGATE CONCRETE PAVING
 - PAVING TYPE 05 - SELF BINDING GRAVEL
 - PAVING TYPE 06 - SAND
 - PAVING TYPE 07 - TACTILE PAVING
 - PAVING TYPE 08 - TARMAC
 - PAVING TYPE 09 - LIGHT WEIGHT SLIP RESISTANT DECKING TO TOP OF BOAT DECKING
 - RETAINING WALL
 - BALUSTRADE
 - EDGE TYPE 01 - LOW RAISED ENGINEERING BRICK EDGE TO MATCH EXISTING ON PROMENADE (HEIGHT TO MATCH EXISTING - TBC 150MM APPROX)
 - EDGE TYPE 02 - FLUSH ENGINEERING BRICK EDGE TO MATCH EXISTING ON PROMENADE
 - EDGE TYPE 03 - RAISED KERB TO ROAD
 - BRICK WALL TYPE 01 - RAISED BRICK WALL WITH ENGINEERING BRICK COPING TO MATCH EXISTING - 500MM HIGH TO SERVICE ROAD PLANTER
 - BOAT HOUSE - BRICK WALL TO MATCH ADJACENT PLANTER ROOF & GREEN ROOF
 - PLANTED TERRACES - TIMBER EDGE, EUROPEAN OAK SLEEPER, 200MM X 100MM VERTICAL SLATS; PREFIXED TO SUPPORT FRAME, FINISH NATURAL
 - CYCLE STAND; SHEFFIELD CYCLE STAND 750MM X 800MM BY MARSHALL'S OR EQUAL AND APPROVED
- SOFTWORKS**
- BINS PROPOSED TO MATCH EXISTING
 - METAL EDGE AND SELF BINDING GRAVEL TO TREE SURROUNDS IN HARD STANDING
 - SEATING TERRACES; EUROPEAN OAK SLEEPER; 200MM X 100MM VERTICAL SLATS; PREFIXED TO SUPPORT FRAME, FINISH NATURAL
 - STEPS & ASSOCIATED HANDRAILS, REFER TO LDA DRAWING:
 - CHESS TABLE AND CHAIRS, SUPPLIER TBC
 - BENCHES - ROUGH AND READY, ACCOYA WOOD, VIRGIN, POWDER COATED BASE TO RAL TBC BY STREET LIFE OR EQUAL AND APPROVED
 - PLAY EQUIPMENT
 - EXISTING LAMPPOSTS (LP), GULLEYS (GG), SIGNS (SI), FEEDER PILLARS (FP) & MANHOLES (MH)
 - PROPOSED POWER
 - PROPOSED WATER FOUNTAIN
 - PROPOSED MULTI DIRECTIONAL LIGHT POSTS
 - PROPOSED LED STRIP LIGHTING TO BENCHES AND HANDRAILS
 - HERBACEOUS PLANTING
 - RAIN GARDENS
 - LAWN
 - EXISTING TREES
 - EXISTING TREES RELOCATED
 - PROPOSED TREES
 - EXISTING LONDON PLANE TREES RELOCATED
 - PROPOSED FLOATING HABITAT
 - CLIMBERS ON TRELIS SYSTEM
 - EXISTING TREES RPA

A Planning Issue AH 29/07/21
 REV. DESCRIPTION APP. DATE

LD&A DESIGN

PROJECT TITLE
 TWICKENHAM RIVERSIDE

DRAWING TITLE
 General Arrangement Plan

ISSUED BY London T: 020 7467 1470
 DATE JULY 2021 DRAWN ER
 SCALE: A1 1:250 CHECKED TW
 STATUS Planning APPROVED AH

DWG. NO 6975_100

No dimensions are to be scaled from this drawing.
 All dimensions are to be checked on site.
 Area measurements for indicative purposes only.
 © LDA Design Consulting LLP. Quality Assured to BS-EN ISO 9001:2000
 Sources: Ordnance Survey



This drawing may contain Ordnance Survey material by permission of Ordnance Survey on behalf of the Controller of Her Majesty's Stationary Office © Crown Copyright 2011. All rights reserved. Reference number 0100031673.
 OS Open data © Crown copyright and database right 2011 | Aerial Photography © Bing Maps

Landscape Drawings

Draft for Review
 Areas to be included in automatic
 Irrigation System :
 Planting : hatched with drip line
 Lawn : hatched with sub surface drip line
 Trees : tree drip necklace
 In development :
 Location of solenoid valve chambers and watering zones,
 pipework routes.

Irrigation Cat 5 Booster
 Set & Controller located
 in plant room
 MCWS & Mains Power
 Supply required

NOTES:
 Ducting Requirements
 > Ducts to be provided by others.
 > Ducts to be minimum 100mm with draw cord. No flexi duct
 > No sharp bends
 > Ducts must be able to accommodate the irrigation pipework, which is rigid
 > Warning tape will be issued for installation by the landscape contractor above the crown of the pipe, halfway between top of pipe and finished level.
 > Drip line MUST be laid prior to mulch layer being applied
 > Solenoid valves are shown LARGER THAN ACTUAL SIZE and will be grouped together as noted on the drawing.

Solenoid Valve. Maybe shown separately but groups of valves are installed in single chambers as per notes on drawing
 Reference letter and number by each valve denote valve type and number. ie L for Lawns, S, for Shrubs, T for trees and H for Hedges

- LEGEND:
- 40mm Green Striped MDPE Mainline Pipework with irrigation low voltage signal cable
 - 32mm Green Striped MDPE Mainline Pipework with irrigation low voltage signal cable
 - 25mm Green Striped MDPE Mainline Pipework with irrigation low voltage signal cable
 - ✱ Mainline Isolation Valve Assembly
 - ⬇ Mainline Air Release Valve Assembly
 - ⬇ Mainline Flushing Valve Assembly
 - ⊙ Hose Point
 - ⊙ Single Solenoid Valve Assembly (See notes above for details)
 - 32mm Green Striped MDPE Lateral Pipework - Lawn
 - 25mm Green Striped MDPE Lateral Pipework - Lawn
 - 25mm Green Striped MDPE Lateral Pipework - Trees
 - 25mm Green Striped MDPE Lateral Pipework - Hedge
 - 25mm Green Striped MDPE Lateral Pipework - Shrub
 - ⊙ Rain Bird Xeri Bug Tree Drip Necklaces - Trees
 - Netalim Techline Dripline - 300mm Spacing - Shrub
 - Netalim Techline Dripline - 300mm Spacing - Hedge
 - Netalim Techline Dripline - 300mm Spacing - Drip Subsurface
 - ⊙ Irrigation Pumpstation Location
 - ⊙ Water Termination Point

Revision Details	IB	RO	RO	12/06/2020	00
Prep.	Chk.	App.	Date	Rev.	

Job Title:
Twickenham Riverside

Drawing Title:
**Irrigation System :
 Areas to be Irrigated Automatically**

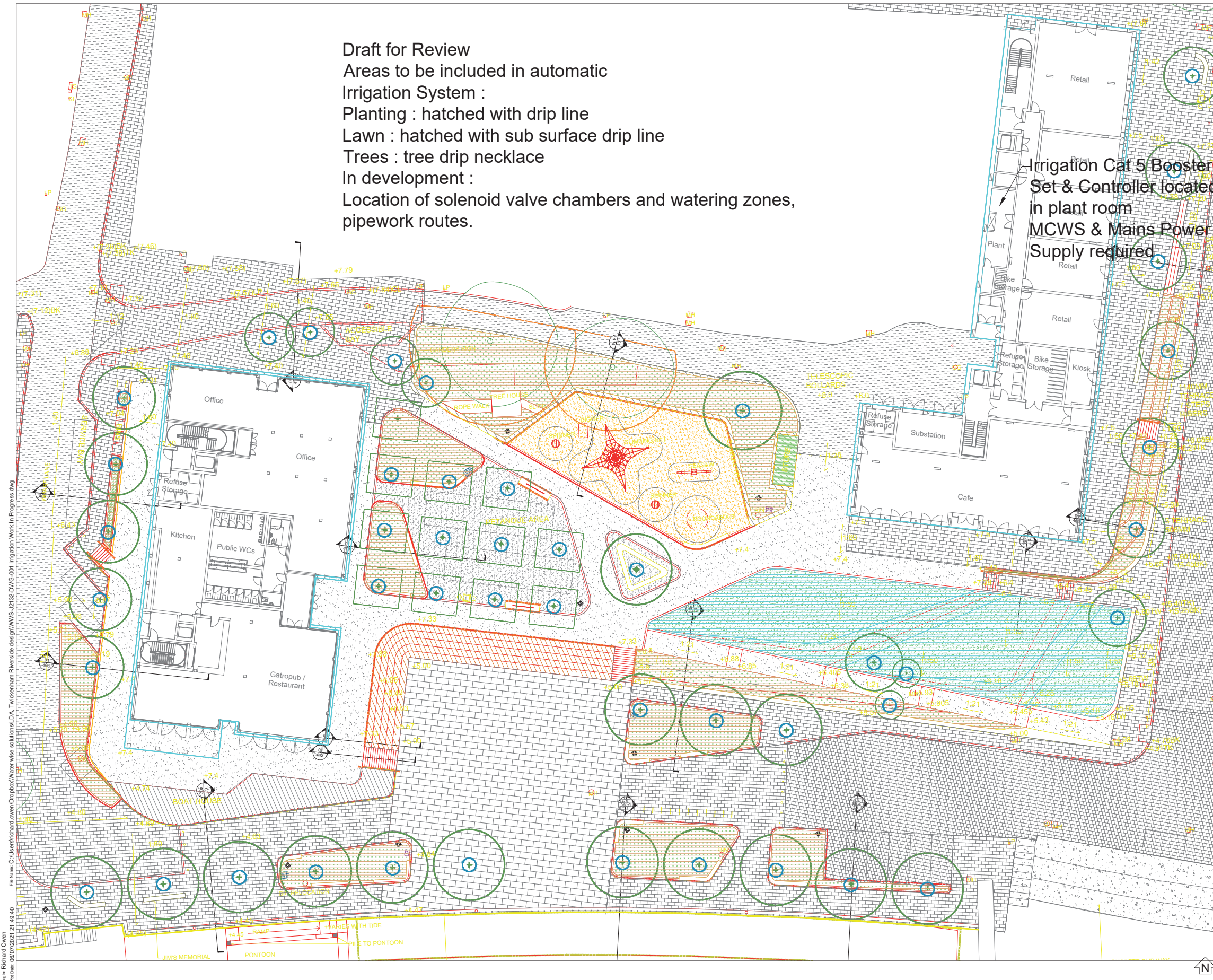
Scale at A1: 1:100

Client:
**LDA for
 Richmond &
 Wandsworth Council**

Installation Contractor:
water wise solutions
 20 Hanover Road, Coxheath
 Maidstone, ME17 4QQ
 Tel: 01352 753812

Drawn	IB	Checked	RO	Design Status
Designed	IB	Approved	IB	Comment
Date	06/07/2021	Sheet	1/1	Revision
Drawing Number:	WWS-J2132-DWG-001			00

© Copyright



User: Richard Owen
 File Name: C:\Users\richard_owen\Desktop\Water wise solutions\DA - Twickenham Riverside design\WWS-J2132-DWG-001 Irrigation Work in Progress.dwg
 Plot Date: 06/07/2021 21:49:40

Landscape Drawings



LEGEND

KEY

- PLANNING APPLICATION BOUNDARY
- GREEN ROOF

REV.	DESCRIPTION	APP.	DATE
A	Planning Issue	AH	29/07/21

LD&DESIGN

PROJECT TITLE
TWICKENHAM RIVERSIDE

DRAWING TITLE
General Arrangement Roof

ISSUED BY	London	T: 020 7467 1470
DATE	JULY 2021	DRAWN ER
SCALE/A1	1:250	CHECKED TW
STATUS	Planning	APPROVED AH

DWG. NO 6975_102

No dimensions are to be scaled from this drawing.
All dimensions are to be checked on site.
Area measurements for indicative purposes only.
© LDA Design Consulting LLP. Quality Assured to BS-EN ISO 9001:2000
Source: Ordnance Survey



This drawing may contain Ordnance Survey material by permission of Ordnance Survey on behalf of the Controller of Her Majesty's Stationery Office © Crown Copyright 2011. All rights reserved. Reference number 0100031673.
OS Open data © Crown copyright and database right 2011 | Aerial Photography © Bing Maps

Landscape Drawings

X:\0816975_TWICKENHAM_RIVERSIDE\CAD\DRAWINGS\07_103.DWG



LEGEND

KEY

- PLANNING APPLICATION BOUNDARY
- EXISTING TREES
- EXISTING TREES RELOCATED
- PROPOSED TREES
- EXISTING LONDON PLANE TREES RELOCATED
- EXISTING TREES RPA
- TREE PIT EXTENTS & SOIL VOLUME
- SILVACELLS BY DEEPROOT OR EQUAL AND APPROVED
- GREEN ROOF

NOTE:
THE SOIL VOLUMES FOR THE TREES ON THE PLAN HAS BEEN BASED ON THE FOLLOWING ASSUMPTIONS:

WHERE TREES ARE PLANTED IN OPEN PLANTING BEDS, HAVE ASSUMED 1.2M DEPTH SOIL.

WHERE TREES ARE PLANTED WITHIN PAVED AREA HAVE ASSUMED USE OF SILVACELL PRODUCT THAT IS 1.092M DEPTH WITH 93% EFFICIENCY (TREE PIT DETAIL AND PRODUCT TO BE REVIEWED FOLLOWING INVESTIGATION INTO FAILURE OF EXISTING PIN OAKS ALONG RIVERSIDE).

WHERE TREES ARE PLANTED WITHIN BREEDON GRAVEL / PETANANQUE AREA ASSUMED STRUCTURAL SOIL OF 1.2M DEPTH WITH 50% EFFICIENCY.

A	Planting Issues	Rev	27/07/21
REV.	DESCRIPTION	APP.	DATE

LDADDESIGN

PROJECT TITLE
TWICKENHAM RIVERSIDE

DRAWING TITLE
General Arrangement Tree Pit Plan

ISSUED BY	London	T: 020 7467 1470
DATE	JULY 2021	DRAWN ER
SCALE/A1	1:250	CHECKED TW
STATUS	Planning	APPROVED AH

DWG. NO 6975_103

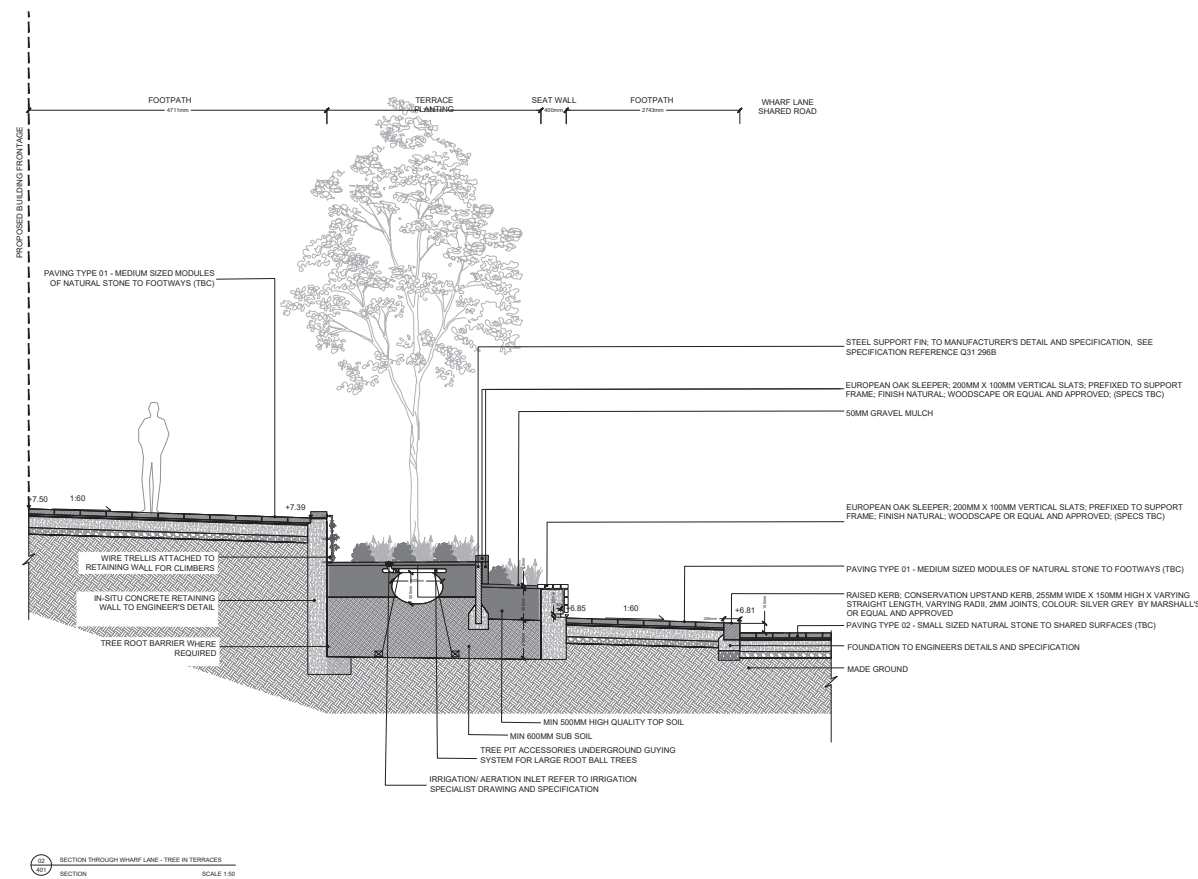
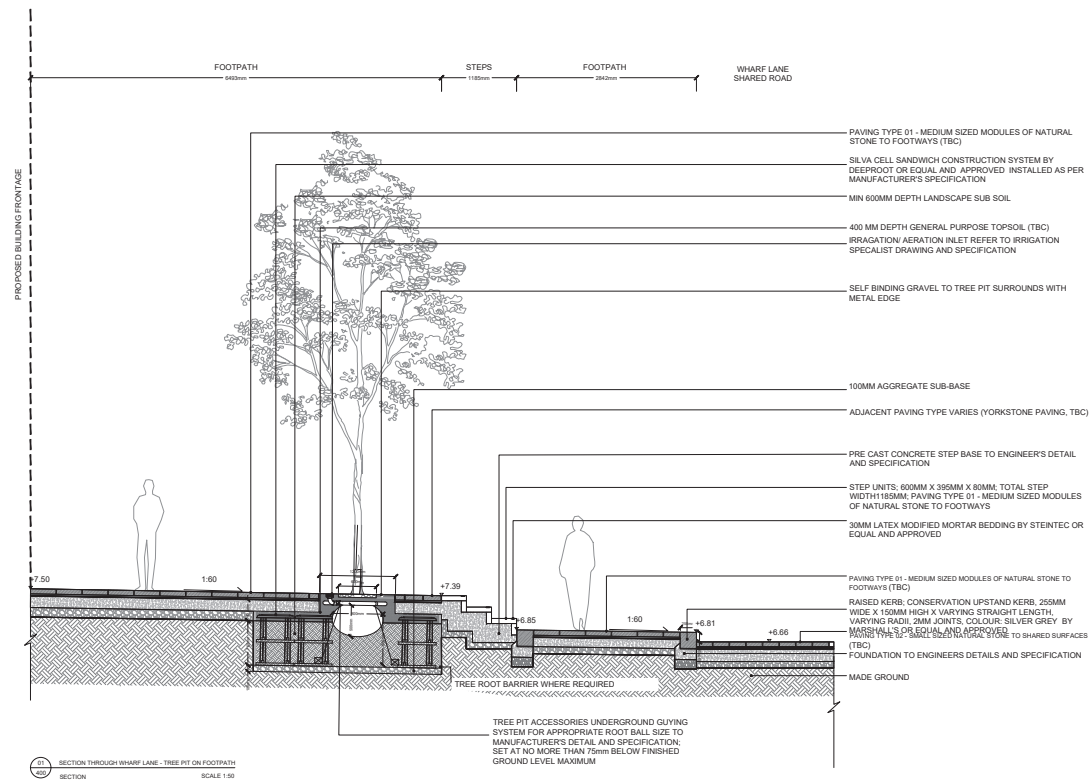
No dimensions are to be scaled from this drawing.
All dimensions are to be checked on site.
Area measurements for indicative purposes only.
© LDA Design Consulting LLP. Quality Assured to BS-EN ISO 9001:2000
Source: Ordnance Survey

This drawing may contain Ordnance Survey material by permission of Ordnance Survey on behalf of the Controller of Her Majesty's Stationery Office © Crown Copyright 2011. All rights reserved. Reference number 0100031673.
OS Open data © Crown copyright and database right 2011 | Aerial Photography © Bing Maps

Landscape Drawings

Appendix D: Landscape Drawings

X:\0650795_TWICKENHAM_RIVERSIDE\DWG_XREF\0650795_TWICKENHAM_RIVERSIDE\DETAILS_400 SERIES_NEW.DWG



REV.	DESCRIPTION	APP.	DATE
A	Planning Issue	AH	27/07/21

LDADA DESIGN

PROJECT TITLE
6975_TWICKENHAM RIVERSIDE

DRAWING TITLE
SECTION THROUGH WHARF LANE

ISSUED BY	London	T: 020 7467 1470
DATE	15 JUL 2021	DRAWN JM
SCALE/A1	1:50	CHECKED TW
STATUS	Planning	APPROVED AH

DWG. NO 6975_401

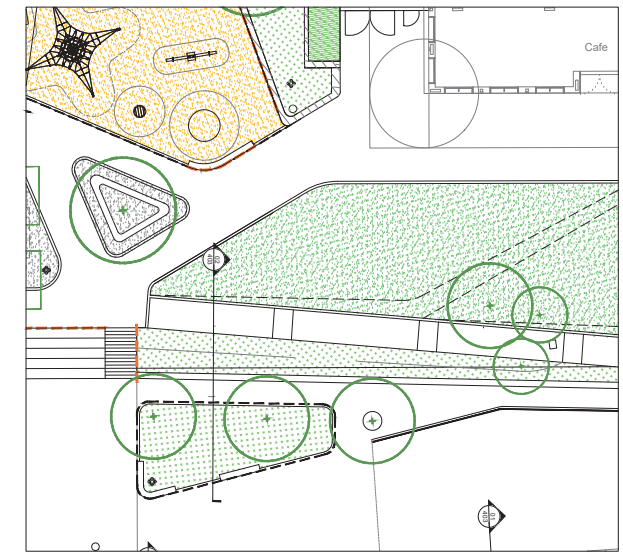
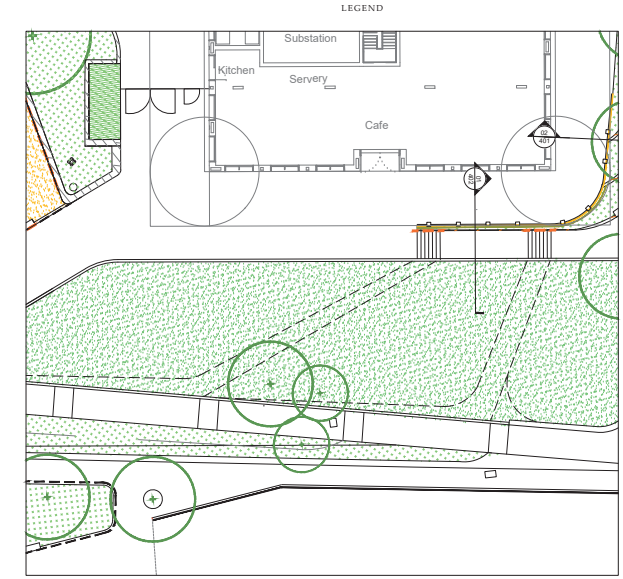
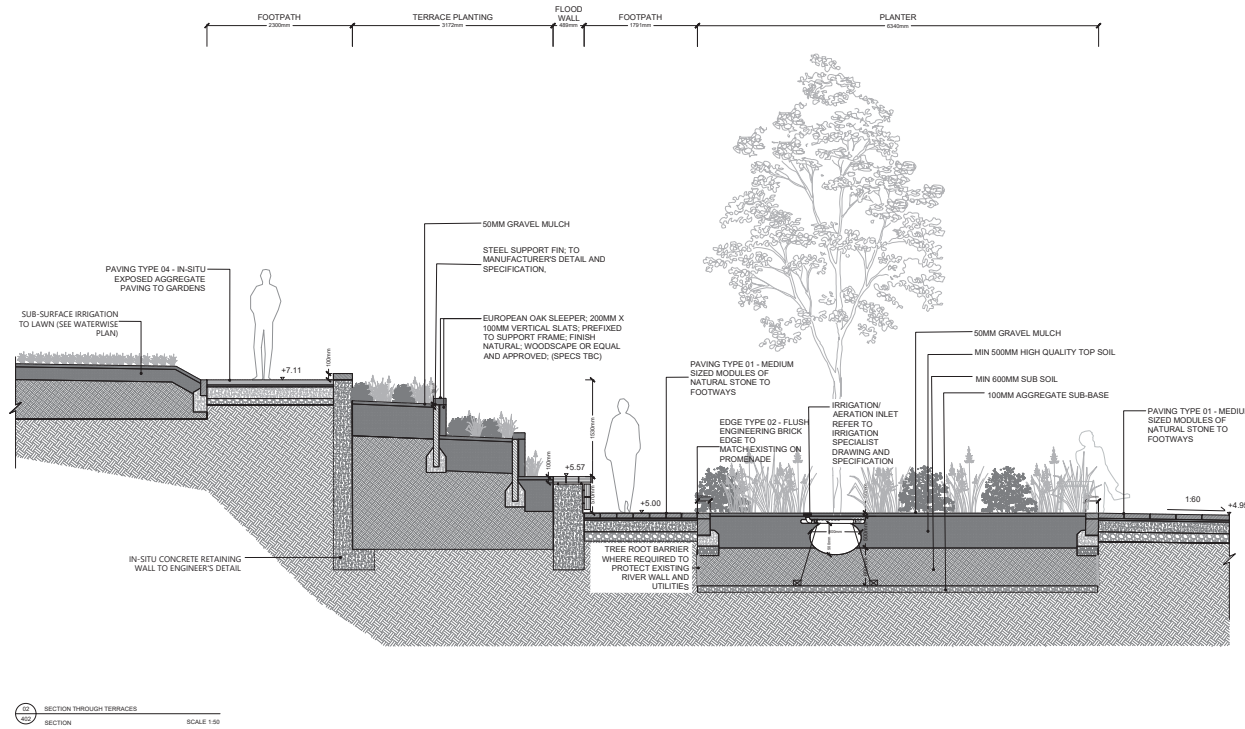
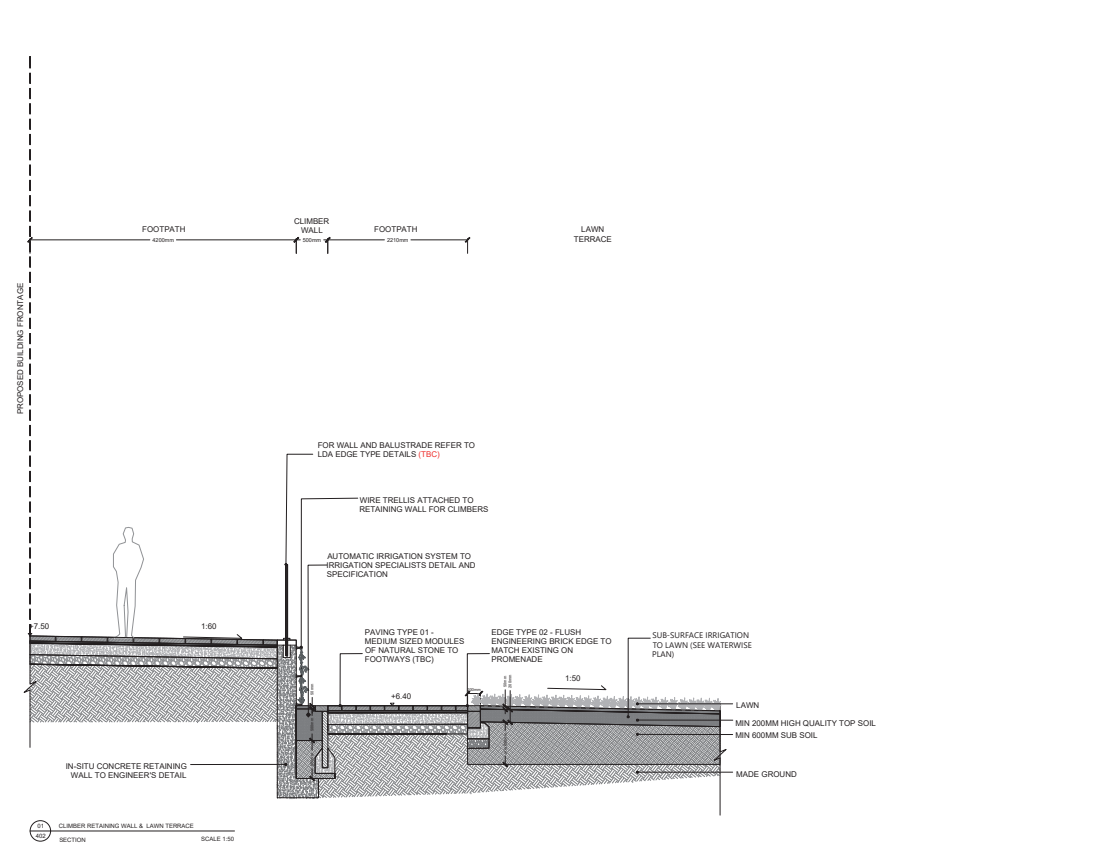
No dimensions are to be scaled from this drawing.
All dimensions are to be checked on site.
Area measurements for indicative purposes only.

© LDA Design Consulting Ltd. Quality Assured to BS EN ISO 9001:2015
Source: Ordnance Survey



Landscape Drawings

X:\06975_TWICKENHAM_RIVERSIDE\CAD_XREF\06975_HARDWORK_DETAILS_40 SERIES_REV.DWG



A Planning Issue AH 27/07/21
REV. DESCRIPTION APP. DATE

LDADA DESIGN

PROJECT TITLE
6975_TWICKENHAM RIVERSIDE

DRAWING TITLE
SECTION THROUGH LAWN/ TERRACES

ISSUED BY London T: 020 7467 1470
DATE 15 JUL 2021 DRAWN JM
SCALE: A1 1:50 CHECKED TW
STATUS Planning APPROVED AH

DWG. NO 6975_402

No dimensions are to be scaled from this drawing.
All dimensions are to be checked on site.
Area measurements for indicative purposes only.

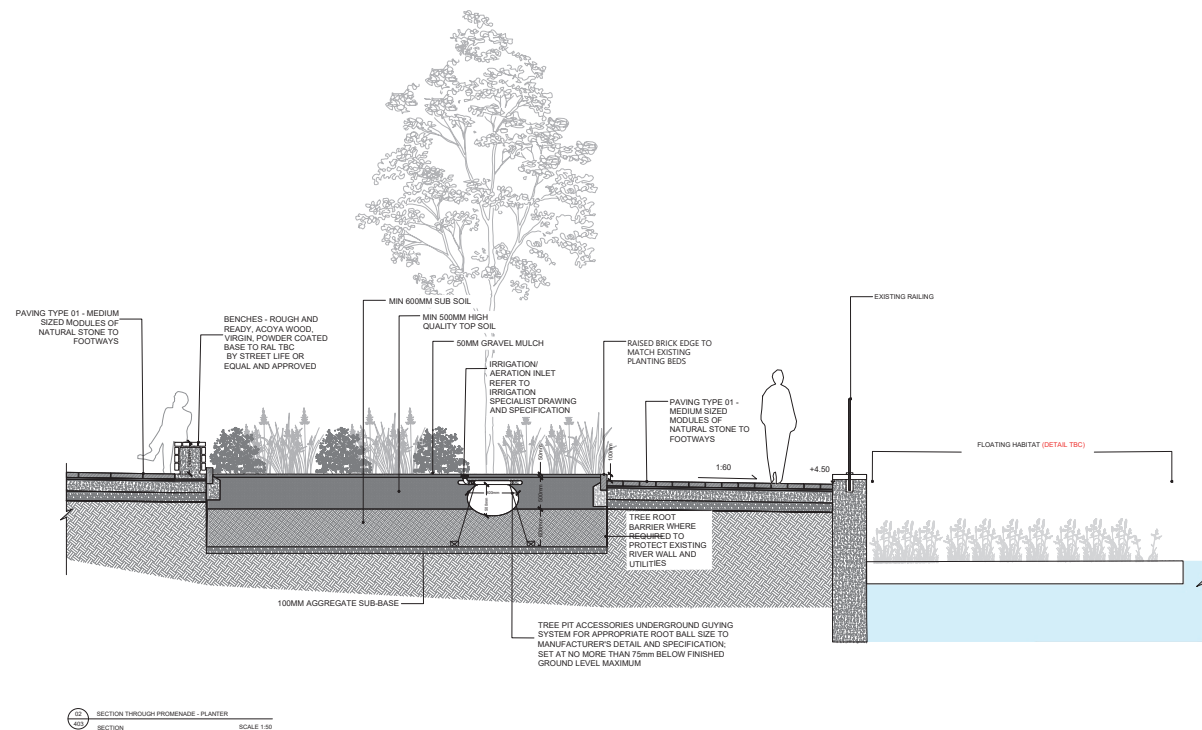
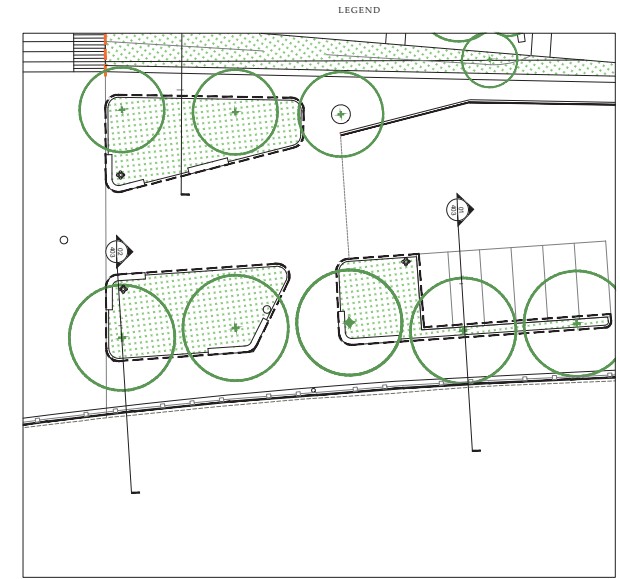
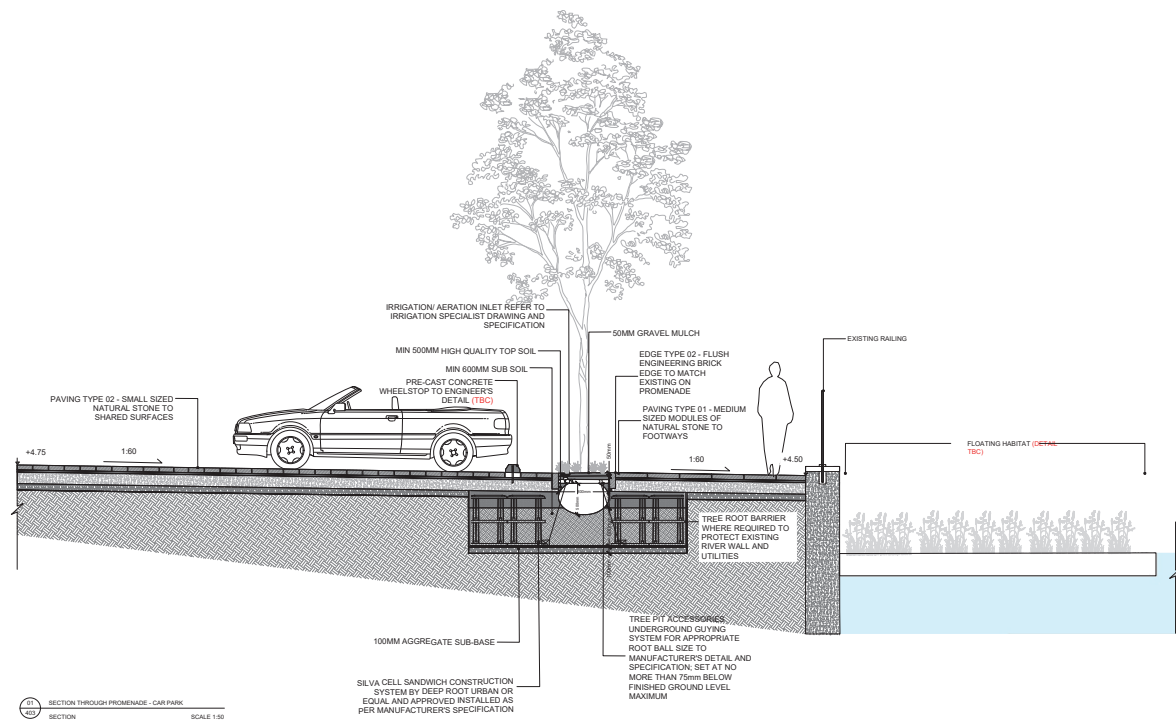
© LDA Design Consulting Ltd. Quality Assured to BS EN ISO 9001:2015
Source: Ordnance Survey



This drawing may contain: Ordnance Survey material by permission of Ordnance Survey on behalf of the Controller of Her Majesty's Stationery Office © Crown Copyright 2019. All rights reserved. Reference number 0100031673.
OS Open data / © Natural England / © DEFRA / © DECC / © English Heritage. Aerial Photography - ESRI, DigitalGlobe, GEOEye, i-cubed, USDA FS/USGSD, AEX, Getmapping, Aerogrid, IGN, IGP, swisstopo, the GIS User Community

Landscape Drawings

X:\06956975_TWICKENHAM_RIVERSIDE\DWG\REF\6975_HARDWORK_DETAILS_40_SERIES_NEW.DWG



A Planning Issue
REV. DESCRIPTION APP. DATE

LD A DESIGN

PROJECT TITLE
6975_TWICKENHAM RIVERSIDE

DRAWING TITLE
SECTION THROUGH RIVER GARDEN & PROMENADE

ISSUED BY London T: 020 7467 1470
DATE 15 JUL 2021 DRAWN JM
SCALE/A1 1:50 CHECKED TW
STATUS Planning APPROVED AH

DWG. NO 6975_403

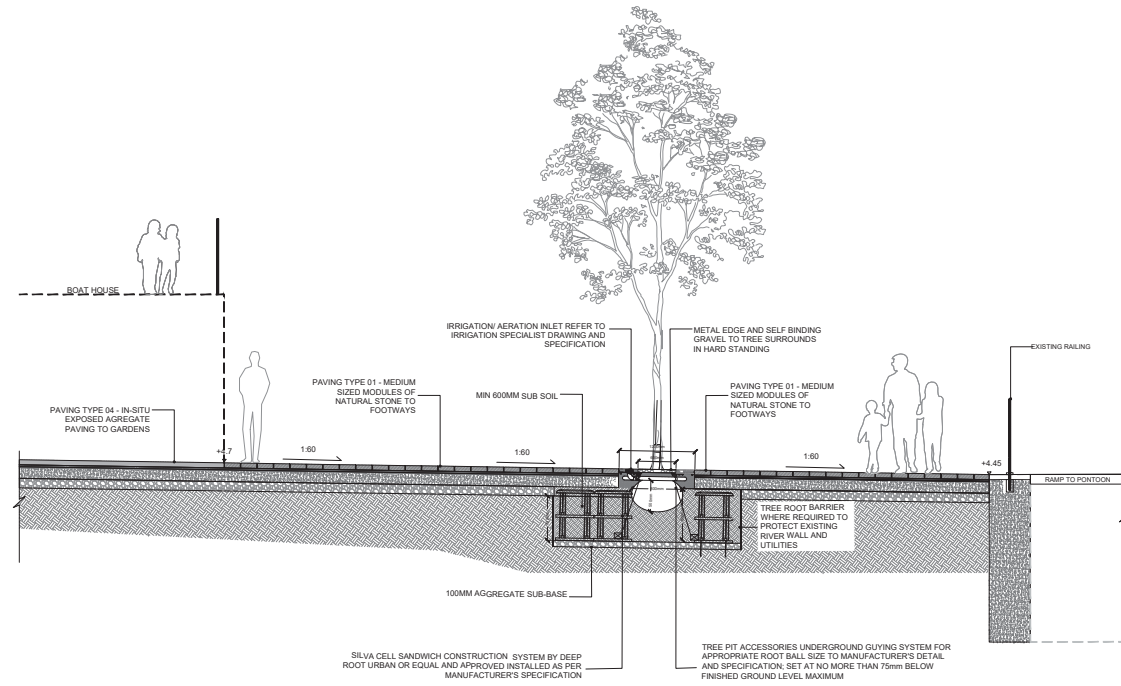
No dimensions are to be scaled from this drawing.
All dimensions are to be checked on site.
Area measurements for indicative purposes only.

© LDA Design Consulting Ltd. Quality Assured to BS EN ISO 9001:2015
Source: Ordnance Survey

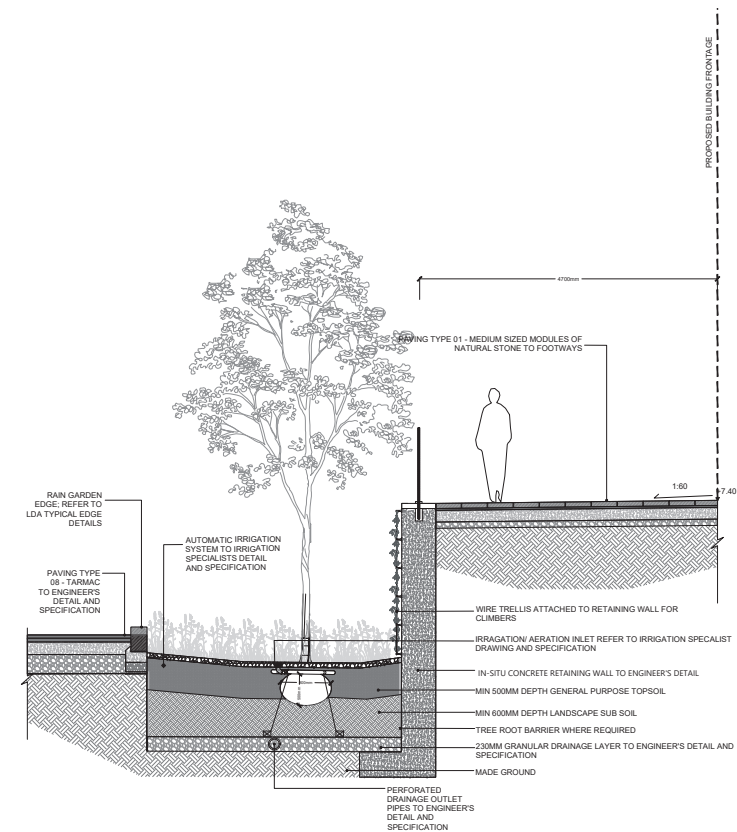


Landscape Drawings

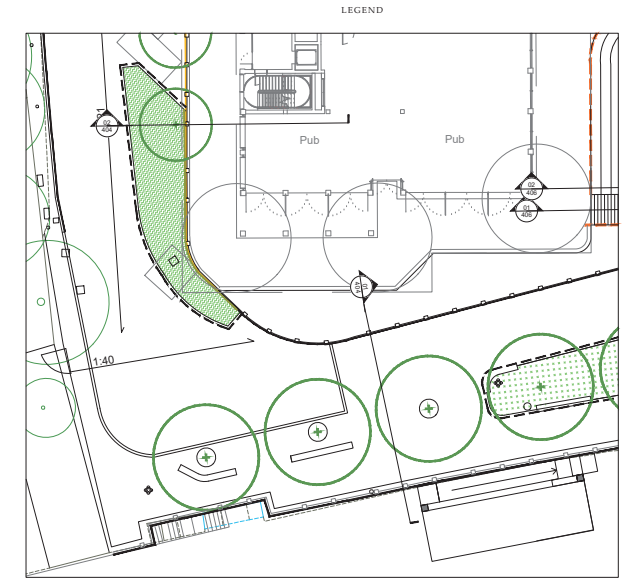
X:\058975_TWICKENHAM_RIVERSIDE\DWG\REF\058975_HARDWORK_DETAILS_400_SERIES_NEW.DWG



SECTION THROUGH INDIVIDUAL TREE PIT
SCALE 1:50



SECTION THROUGH WATER LAKE - RAIN GARDEN
SCALE 1:50



A Planning Issue AH 27/07/21
REV. DESCRIPTION APP. DATE

LD&DESIGN

PROJECT TITLE
6975_TWICKENHAM RIVERSIDE

DRAWING TITLE
SECTION THROUGH TREES IN PAVEMENT
& RAIN GARDEN

ISSUED BY London T: 020 7467 1470
DATE 15 JUL 2021 DRAWN JM
SCALE/A1 1:50 CHECKED TW
STATUS Planning APPROVED AH

DWG. NO 6975_404

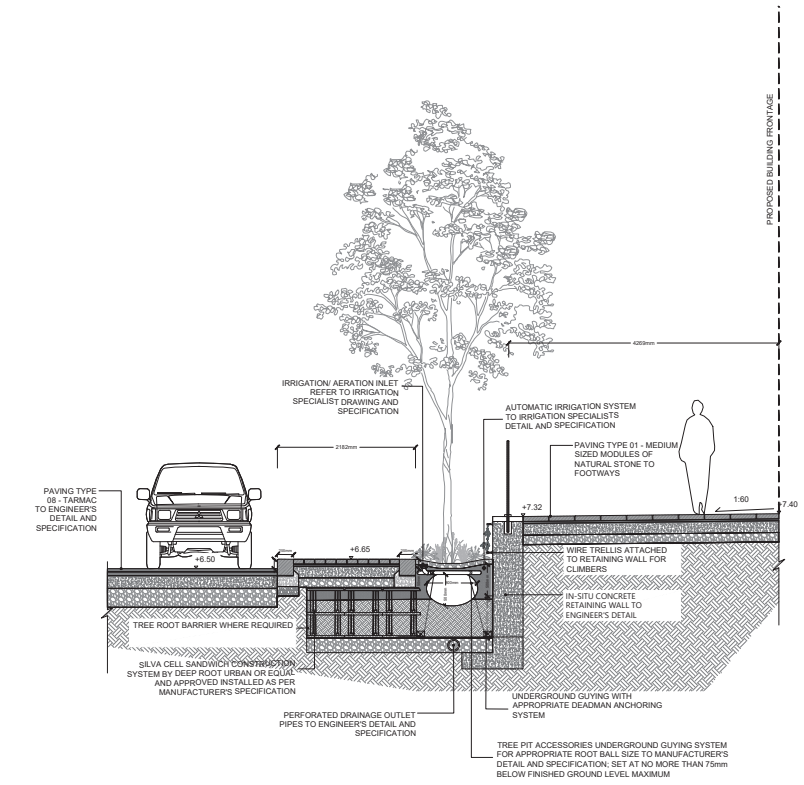
No dimensions are to be scaled from this drawing.
All dimensions are to be checked on site.
Area measurements for indicative purposes only.

© LDA Design Consulting Ltd. Quality Assured to BS EN ISO 9001:2015
Source: Ordnance Survey

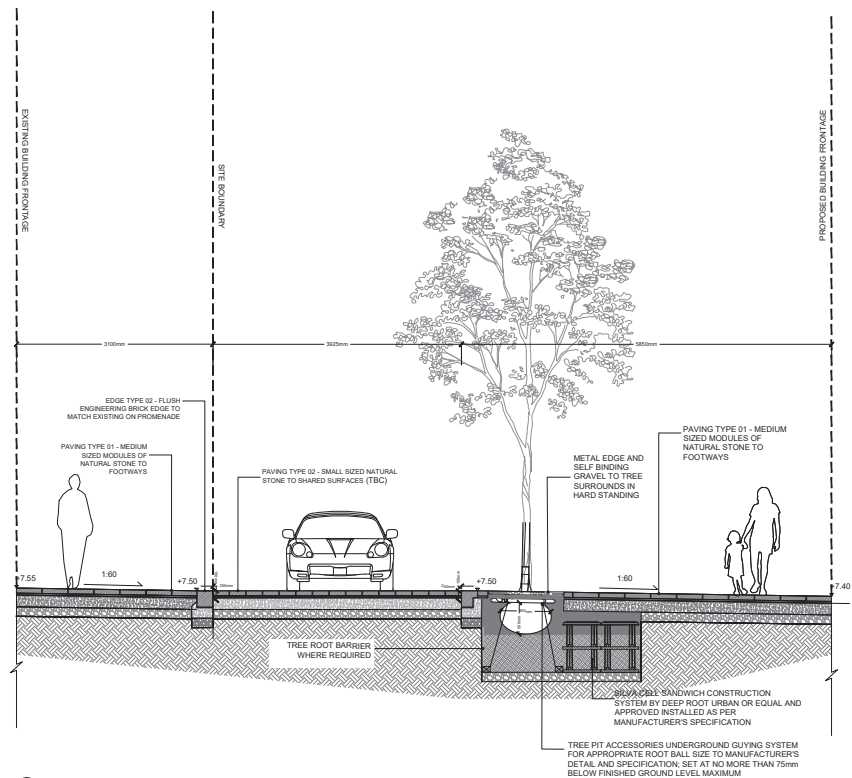


Landscape Drawings

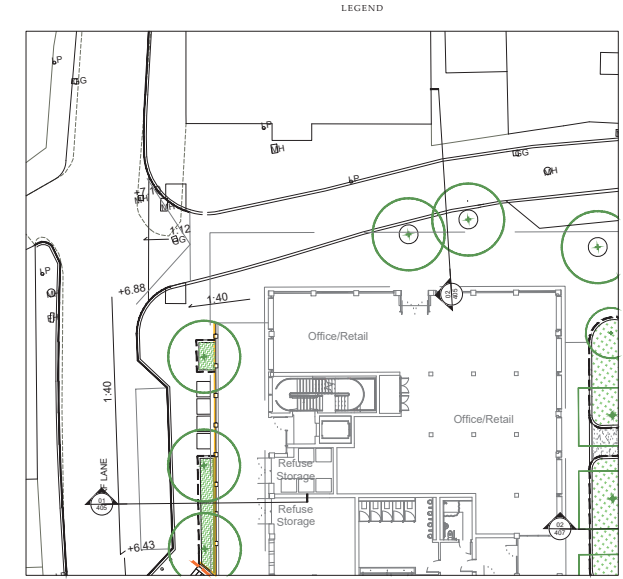
X:\06975_TWICKENHAM_RIVERSIDE\DWG_REF\6975_HWK\WORK DETAILS_40 SERIES_NEW.DWG



SECTION THROUGH WATER LANE - SERVICE BAY
SCALE 1:50



SECTION DETAIL - SECTION THROUGH SERVICE ROAD
SCALE 1:50



A Planning Issue
REV. DESCRIPTION
DATE 27/07/21
APP. DATE

LDADA DESIGN

PROJECT TITLE
6975_TWICKENHAM RIVERSIEDE

DRAWING TITLE
SECTION THROUGH WATER LANE & SERVICE BAY

ISSUED BY London T: 020 7467 1470
DATE 15 JUL 2021 DRAWN JM
SCALE/A1 1:50 CHECKED TW
STATUS Planning APPROVED AH

DWG. NO 6975_405

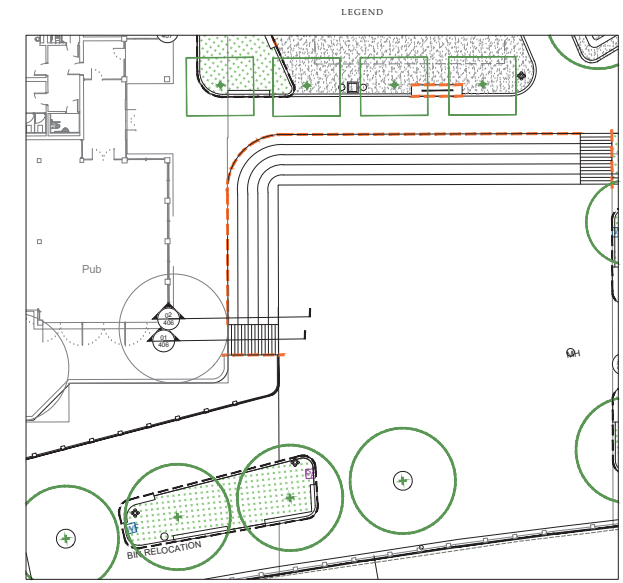
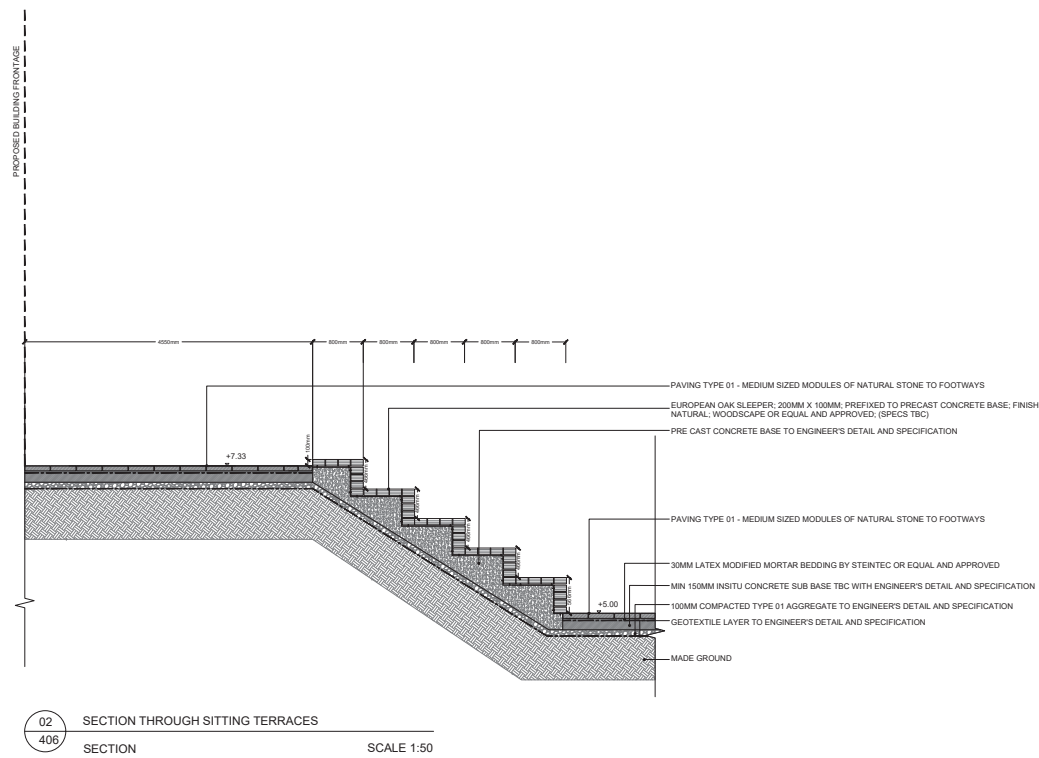
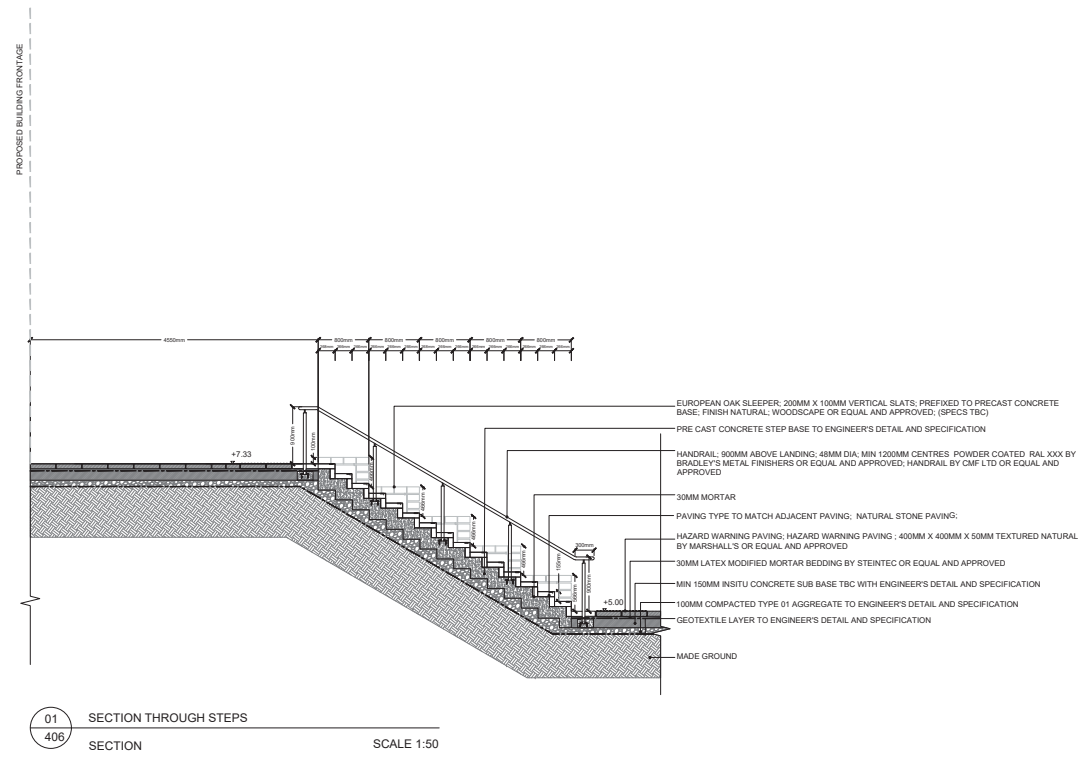
No dimensions are to be scaled from this drawing.
All dimensions are to be checked on site.
Area measurements for indicative purposes only.

© LDA Design Consulting Ltd. Quality Assured to BS EN ISO 9001:2015
Source: Ordnance Survey



Landscape Drawings

X:\0580975_TWICKENHAM_RIVERSIDE\DWG_REF\0580975_HARDWORK_DETAILS_400_SERIES_NEW.DWG



REV.	DESCRIPTION	APP. DATE
A	Planning Issue	27/07/21

LD A DESIGN

PROJECT TITLE
6975_TWICKENHAM RIVERSIDE

DRAWING TITLE
SECTION THROUGH FLOOD WALL/ TERRACES

ISSUED BY	London	T: 020 7467 1470
DATE	15 JUL 2021	DRAWN JM
SCALE/A1	1:50	CHECKED TW
STATUS	Planning	APPROVED AH

DWG. NO 6975_406

No dimensions are to be scaled from this drawing.
All dimensions are to be checked on site.
Area measurements for indicative purposes only.

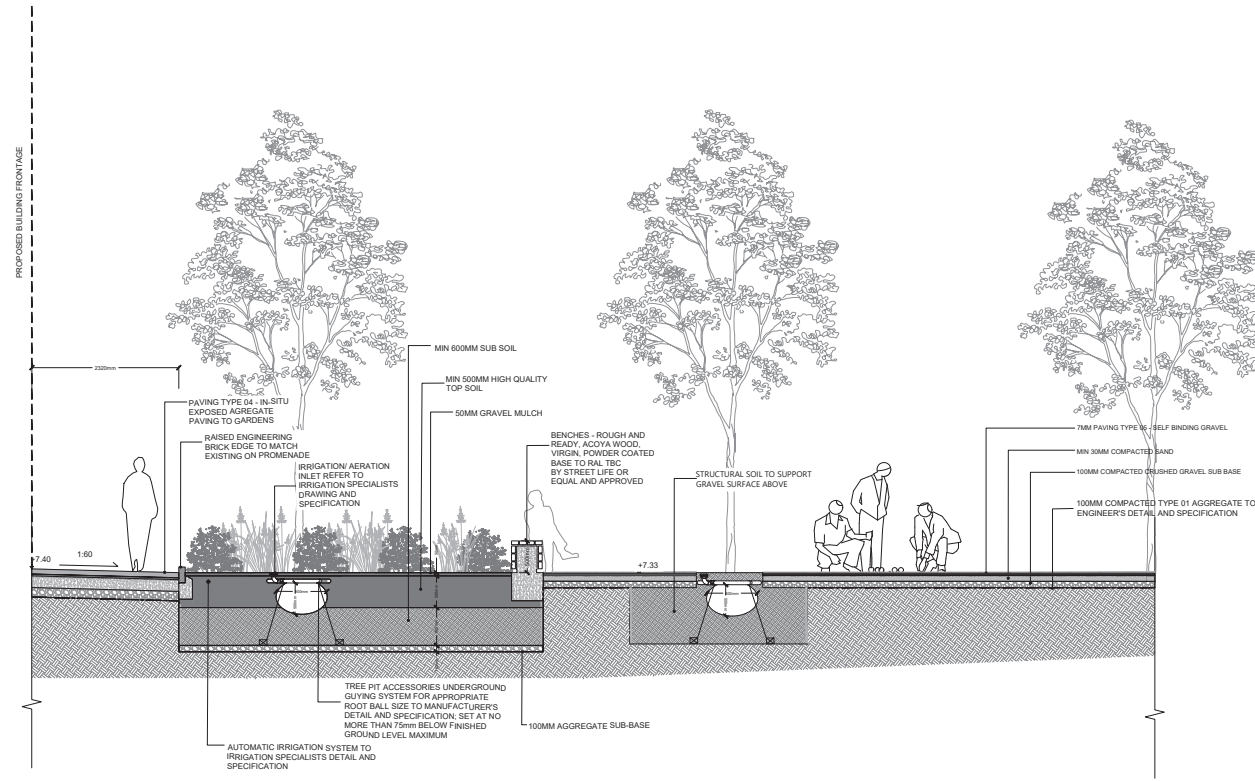
© LDA Design Consulting Ltd. Quality Assured to BS EN ISO 9001:2015
Source: Ordnance Survey



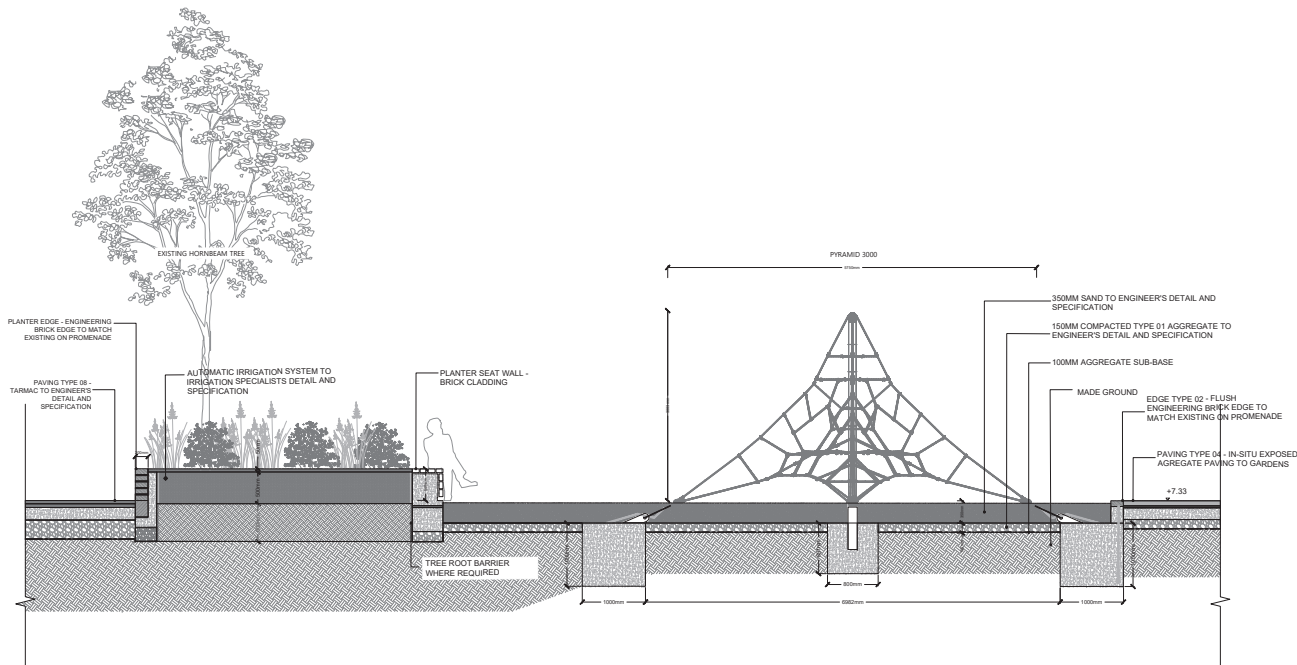
Landscape Drawings

Appendix D: Landscape Drawings

X:\0695\6975_TWICKENHAM_RIVERSIDE\DWG\CADD\REF\6975_HARDWORK_DETAILS_407_SERIES_NEW.DWG



01 SECTION THROUGH PLANTER & PETANQUE
SECTION SCALE 1:50



02 SECTION THROUGH PLANTER & PLAYGROUND
SECTION SCALE 1:50



LEGEND

A Planning Issue 27/07/21
REV. DESCRIPTION APP. DATE

LD&DESIGN

PROJECT TITLE
6975_TWICKENHAM RIVERSIDE

DRAWING TITLE
SECTION THROUGH PLANTER & PLAY AREA

ISSUED BY London T: 020 7467 1470
DATE 15 JUL 2021 DRAWN JM
SCALE/A1 1:50 CHECKED TW
STATUS Planning APPROVED AH

DWG. NO 6975_407

No dimensions are to be scaled from this drawing.
All dimensions are to be checked on site.
Area measurements for indicative purposes only.

© LDA Design Consulting Ltd. Quality Assured to BS EN ISO 9001:2015
Source: Ordnance Survey



Twickenham Riverside | Design & Access Statement

Hopkins Architects
27 Broadley Terrace
London
NW1 6LG

T: 020 7724 1751
E: mail@hopkins.co.uk