

PLANNING

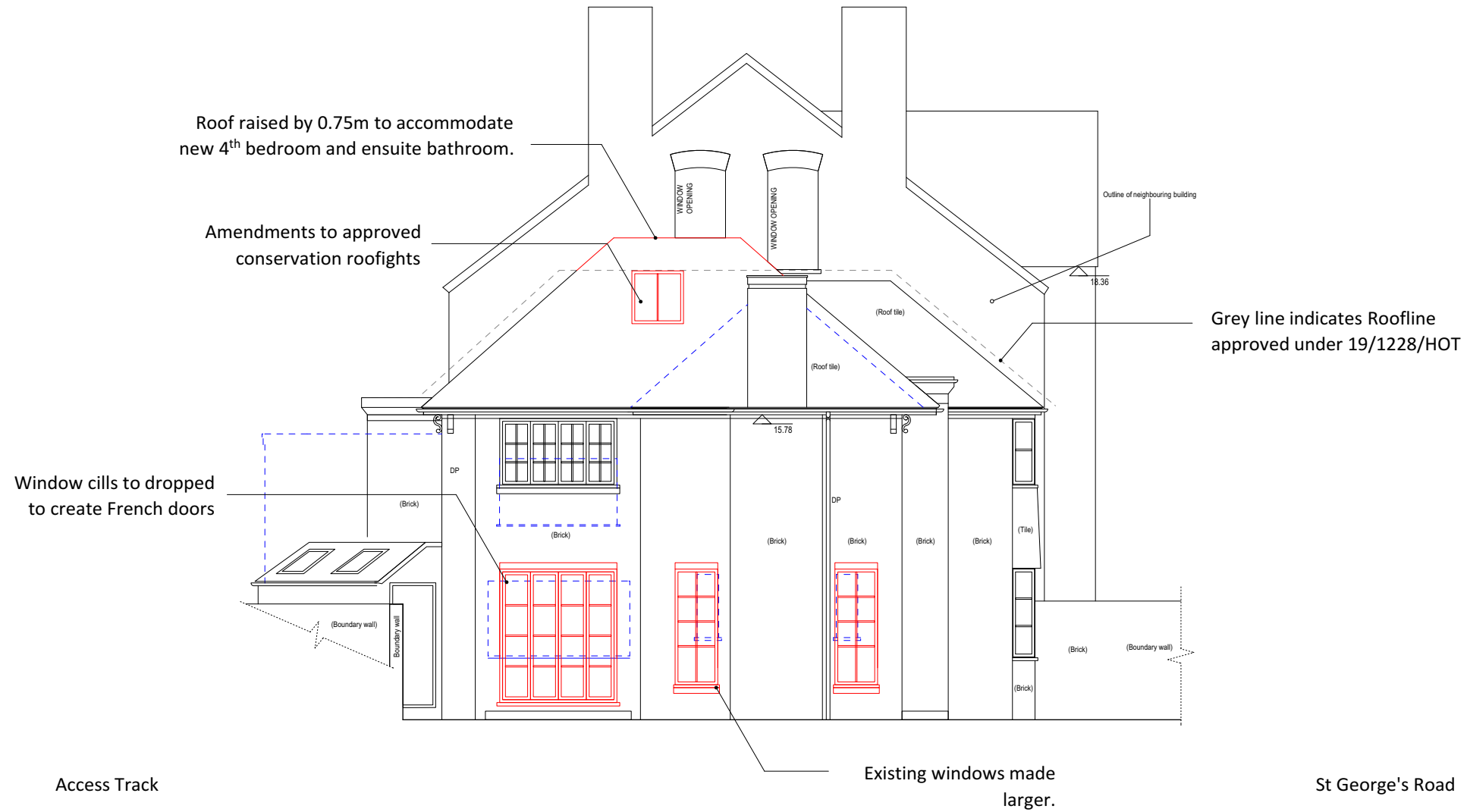
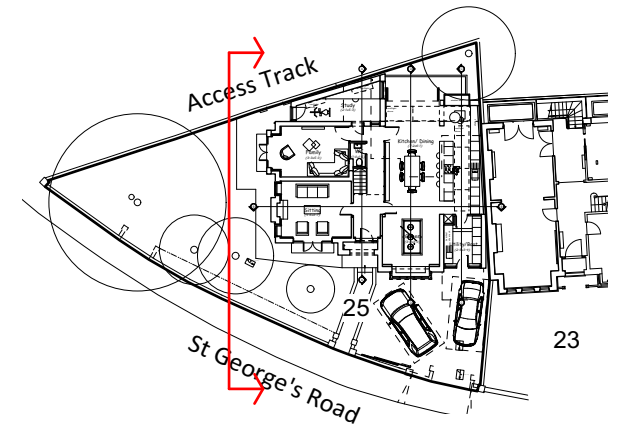
NOTES

Items in red indicate proposed changes to planning approval **19/1228/HOT** (20 November 2019)

----- Existing Building Line (Blue Dotted)

----- Scheme approved (19/1228/HOT)

New timber framed, double glazed windows to replace existing



1 Proposed Side (North) Elevation
Scale: 1:100

