

- EMERGENCY EXIT SIGN AS PER LUMINAIRE SCHEDULE (INTERNAL UNITS)
- EMERGENCY EXTERNAL LIGHTING POINT AS PER LUMINAIRE SCHEDULE (EXTERNAL UNITS)
- LIGHTING CONTROL PIR SENSOR
- ONE WAY MOMENTARY ACTION LIGHTING SWITCH, GANGED AS INDICATED. SUFFIX "K" DENOTES EMERGENCY LIGHTING KEY SWITCH FITTED IN ASSEMBLY
- TWO WAY MOMENTARY ACTION LIGHTING SWITCH, GANGED AS INDICATED. SUFFIX "K" DENOTES EMERGENCY LIGHTING KEY SWITCH FITTED IN ASSEMBLY
- LED EMERGENCY LUMINAIRE
- LIGHTING CONTROL MODULE (DALI). MOUNTED IN CEILING VOID OR WALL MOUNTED AT HIGH LEVEL IN SURFACE INSTALL AREAS
- SWITCHED FUSED CONNECTION UNIT SERVING LIGHTING POINTS AND/OR LCM'S
- WALL MOUNTED EXTERNAL LIGHTING POINT
- FRONT OF HOUSE TRACK LIGHTING ASSEMBLY

LIGHTING CONTROL MODULE CIRCUIT DESIGNATION DETAILS:

X/OPY - DENOTES POWER AND DIMMING PORT ALLOCATION FROM LCM UNIT. "X" DENOTES LCM NUMBER, "Y" DENOTES LCM PORT NUMBER (1 TO 4).

X/SWY - DENOTES SWITCHED INPUT PORT ALLOCATION FROM LCM. "X" DENOTES LCM NUMBER, "Y" DENOTES LCM SWITCH PORT (1 TO 4).

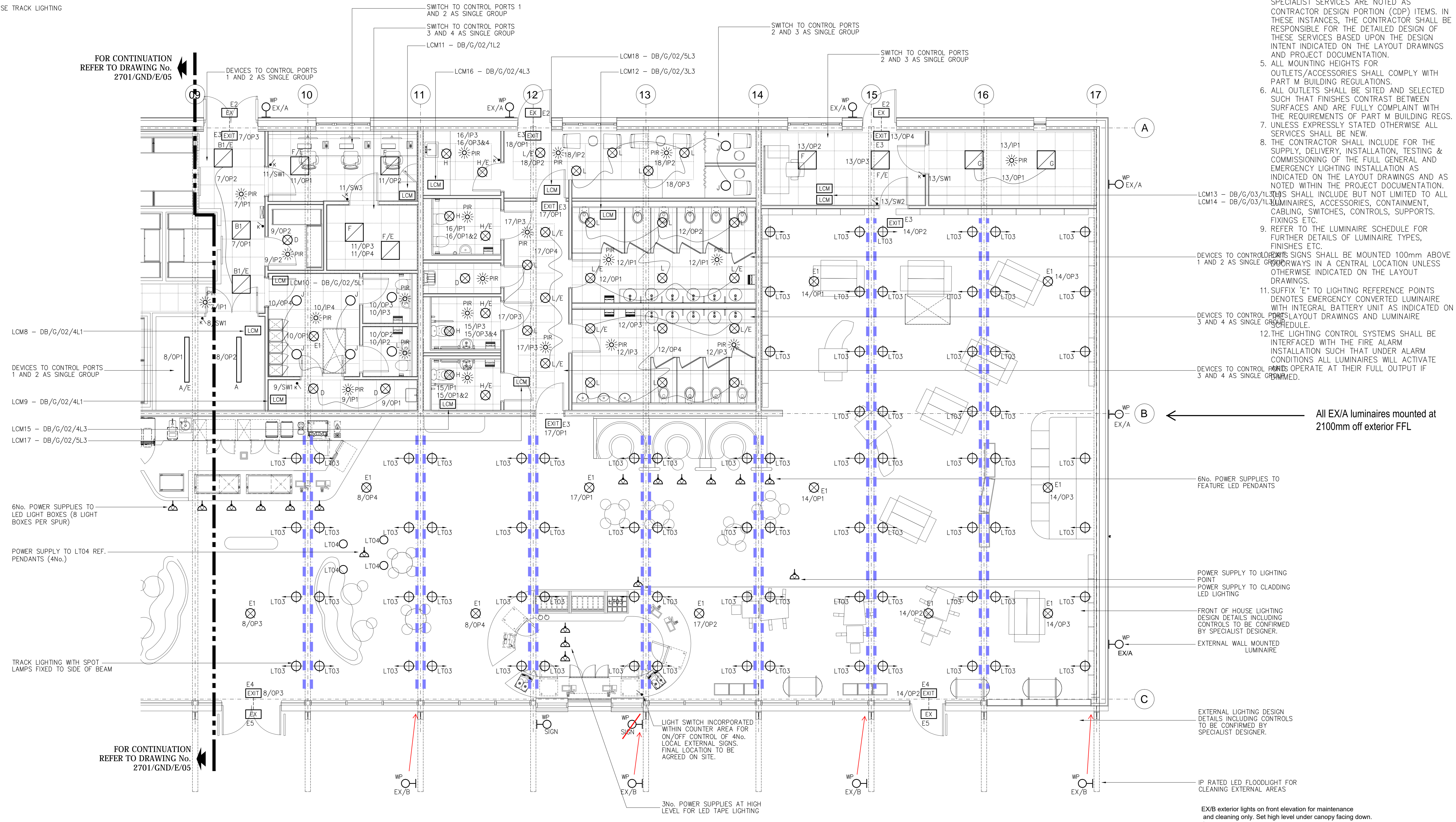
X/IPY - DENOTES AUTOMATIC DEVICE INPUT PORT ALLOCATION FROM LCM. "X" DENOTES LCM NUMBER, "Y" DENOTES LCM AUTOMATIC DEVICE PORT NUMBER (1 TO 4)

REFER TO LUMINAIRE SCHEDULE FOR ALL LUMINAIRE TYPES, MANUFACTURERS AND CHARACTERISTICS

GENERAL

1. THIS DRAWING SHALL BE READ IN CONJUNCTION WITH ALL OTHER PROJECT DOCUMENTATION.
2. SERVICES DETAILED WITHIN THIS LAYOUT DRAWING HAVE BEEN ZONALLY CO-ORDINATED ONLY; IT SHALL BE THE RESPONSIBILITY OF THE CONTRACTOR TO UNDERTAKE THE FINAL DETAILED CO-ORDINATION OF ALL SERVICES AND BUILDING ELEMENTS.
3. THE ELECTRICAL SERVICES INSTALLATION SHALL FULLY COMPLY WITH; AND BE CARRIED OUT IN ACCORDANCE WITH THE PROJECT DOCUMENTATION; BUILDING REGULATIONS (ALL PARTS AS APPLICABLE) THE LATEST IET WIRING REGULATIONS (BS7671), GUIDANCE NOTES, CIBSE GUIDES, ALL REQUIREMENTS OF BUILDING CONTROL, ALL REQUIREMENTS OF THE FIRE OFFICER, THE CLIENT SPECIFICATION/REQUIREMENTS/EXPECTATIONS AND ALL BS/BSEN STANDARDS APPLICABLE TO EACH SERVICE.
4. THE CONTRACTOR SHALL NOTE THAT WITHIN THE PROJECT DOCUMENTATION VARIOUS SPECIALIST SERVICES ARE NOTED AS CONTRACTOR DESIGN PORTION (CDP) ITEMS. IN THESE INSTANCES, THE CONTRACTOR SHALL BE RESPONSIBLE FOR THE DETAILED DESIGN OF THESE SERVICES BASED UPON THE DESIGN INTENT INDICATED ON THE LAYOUT DRAWINGS AND PROJECT DOCUMENTATION.
5. ALL MOUNTING HEIGHTS FOR OUTLETS/ACCESSORIES SHALL COMPLY WITH PART M BUILDING REGULATIONS.
6. ALL OUTLETS SHALL BE SITED AND SELECTED SUCH THAT FINISHES CONTRAST BETWEEN SURFACES AND ARE FULLY COMPLAINT WITH THE REQUIREMENTS OF PART M BUILDING REGS. UNLESS EXPRESSLY STATED OTHERWISE ALL SERVICES SHALL BE NEW.
7. THE CONTRACTOR SHALL INCLUDE FOR THE SUPPLY, DELIVERY, INSTALLATION, TESTING & COMMISSIONING OF THE FULL GENERAL AND EMERGENCY LIGHTING INSTALLATION AS INDICATED ON THE LAYOUT DRAWINGS AND AS NOTED WITHIN THE PROJECT DOCUMENTATION.
8. THIS SHALL INCLUDE BUT NOT LIMITED TO ALL LUMINAIRES, ACCESSORIES, CONTAINMENT, CABLING, SWITCHES, CONTROLS, SUPPORTS, FIXINGS ETC.
9. REFER TO THE LUMINAIRE SCHEDULE FOR FURTHER DETAILS OF LUMINAIRE TYPES, FINISHES ETC.
10. ALL MOUNTING HEIGHTS SHALL BE MOUNTED 100mm ABOVE CEILING OR RAYS IN A CENTRAL LOCATION UNLESS OTHERWISE INDICATED ON THE LAYOUT DRAWINGS.
11. SUFFIX 'E' TO LIGHTING REFERENCE POINTS DENOTES EMERGENCY CONVERTED LUMINAIRE WITH INTEGRAL BATTERY UNIT AS INDICATED ON LAYOUT DRAWINGS AND LUMINAIRE SCHEDULE.
12. THE LIGHTING CONTROL SYSTEMS SHALL BE INTERFACED WITH THE FIRE ALARM INSTALLATION SUCH THAT UNDER ALARM CONDITIONS ALL LUMINAIRES WILL ACTIVATE AND OPERATE AT THEIR FULL OUTPUT IF PROGRAMMED.

REV.	DATE	DESCRIPTION	DRN	CHKD
A	18.12.20	GENERAL REVISIONS	MB	JM
B	03.03.21	GENERAL REVISIONS	WTT	JM
C	23.04.21	CONSTRUCTION ISSUE	MB	JM



FOR CONTINUATION REFER TO DRAWING No. 2701/GND/E/05

FOR CONTINUATION REFER TO DRAWING No. 2701/GND/E/05

All EX/A luminaires mounted at 2100mm off exterior FFL

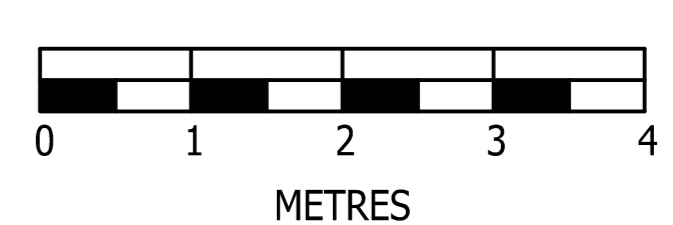
6No. POWER SUPPLIES TO FEATURE LED PENDANTS

POWER SUPPLY TO LIGHTING POINT
POWER SUPPLY TO CLADDING LED LIGHTING

FRONT OF HOUSE LIGHTING DESIGN DETAILS INCLUDING CONTROLS TO BE CONFIRMED BY SPECIALIST DESIGNER.

EXTERNAL LIGHTING DESIGN DETAILS INCLUDING CONTROLS TO BE CONFIRMED BY SPECIALIST DESIGNER.

EX/B exterior lights on front elevation for maintenance and cleaning only. Set high level under canopy facing down. Controlled on 30 minute timer.



SpencerMayes Ltd
Building Services Consultants

10 BRATTON ROAD
CHELSEA
GLoucestershire GL50 2ES
TELEPHONE: 020 7566 0911
FAX: 020 7566 0912
EMAIL: SMS@SPENCERMAYES.CO.UK



CLIENT:

CONTRACT:
KEW FAMILY RESTAURANT

DESCRIPTION:
LIGHTING SERVICES AND CONTROLS (SHEET 2 OF 2)

SCALE: 1:50 @ A0 DATE: SEPT 2020

CONSTRUCTION ISSUE

DRAWING NO.: 2701/GND/E/06 REV C