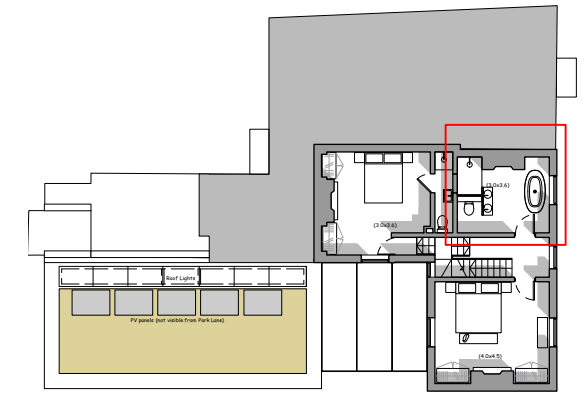


PLANNING

- Existing drainage
- Proposed drainage
- Existing Floor Joists

NEW BATHROOM

New water supply & drainage runs between existing floor joists, connecting to existing drainage in adjoining WC.
 Access for works from floor above to avoid damage to ceiling below
 New partitions at 2.1m high (short of ceiling level) with no damage to cornicing etc.



Key Plan

