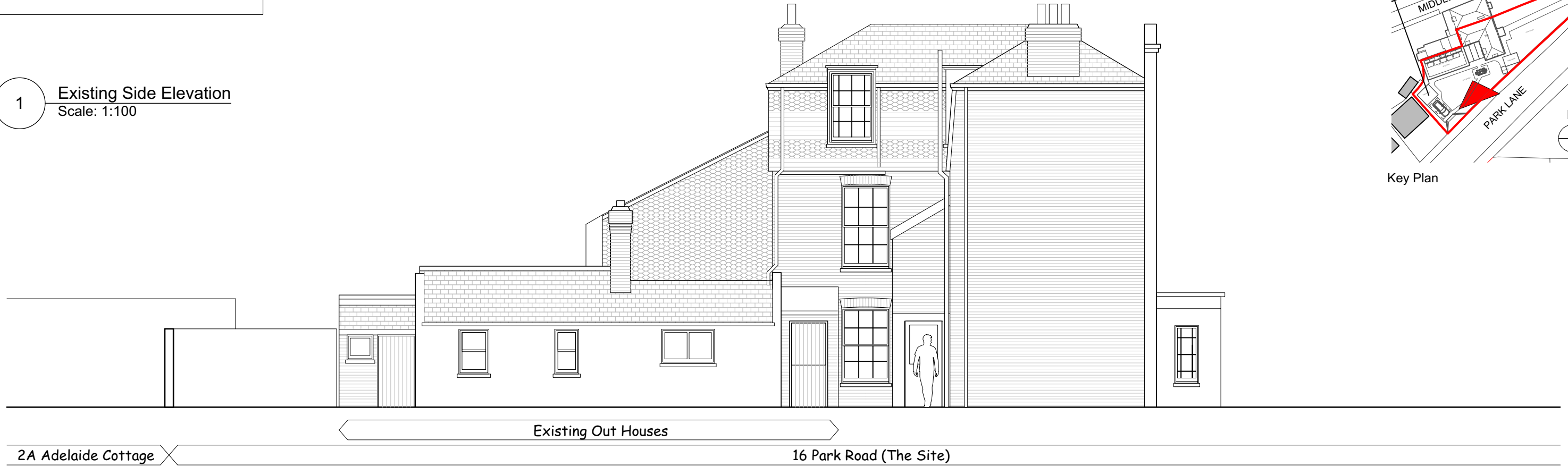


PLANNING

1 Existing Side Elevation
Scale: 1:100



2 Proposed Side Elevation
Scale: 1:100



- Materials**
- 1. London stock brick to match existing house
 - 2. Aluminium framed dark grey sliding glass doors
 - 3. Dark grey aluminium parapet coping
 - 4. Frameless glass link

