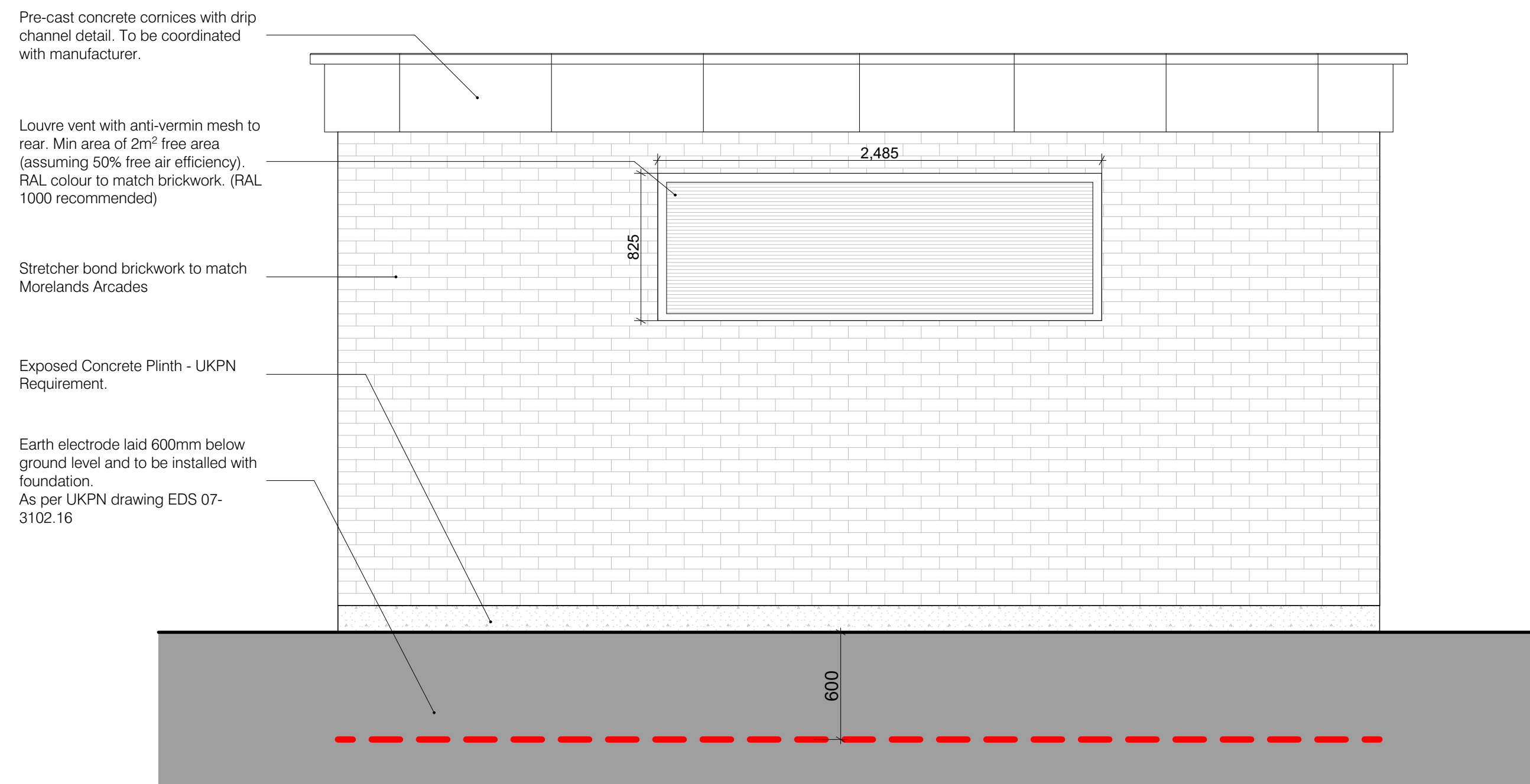
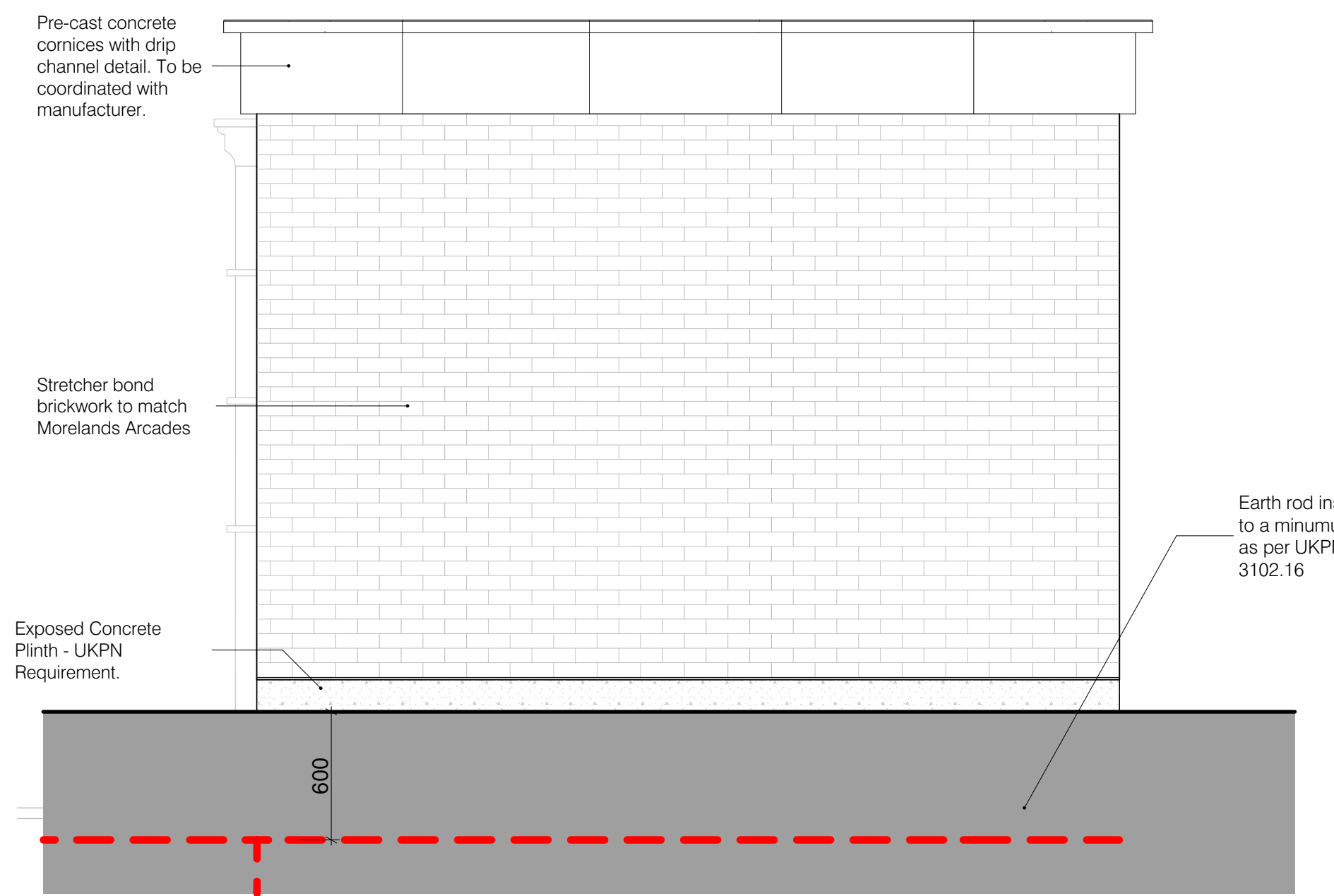


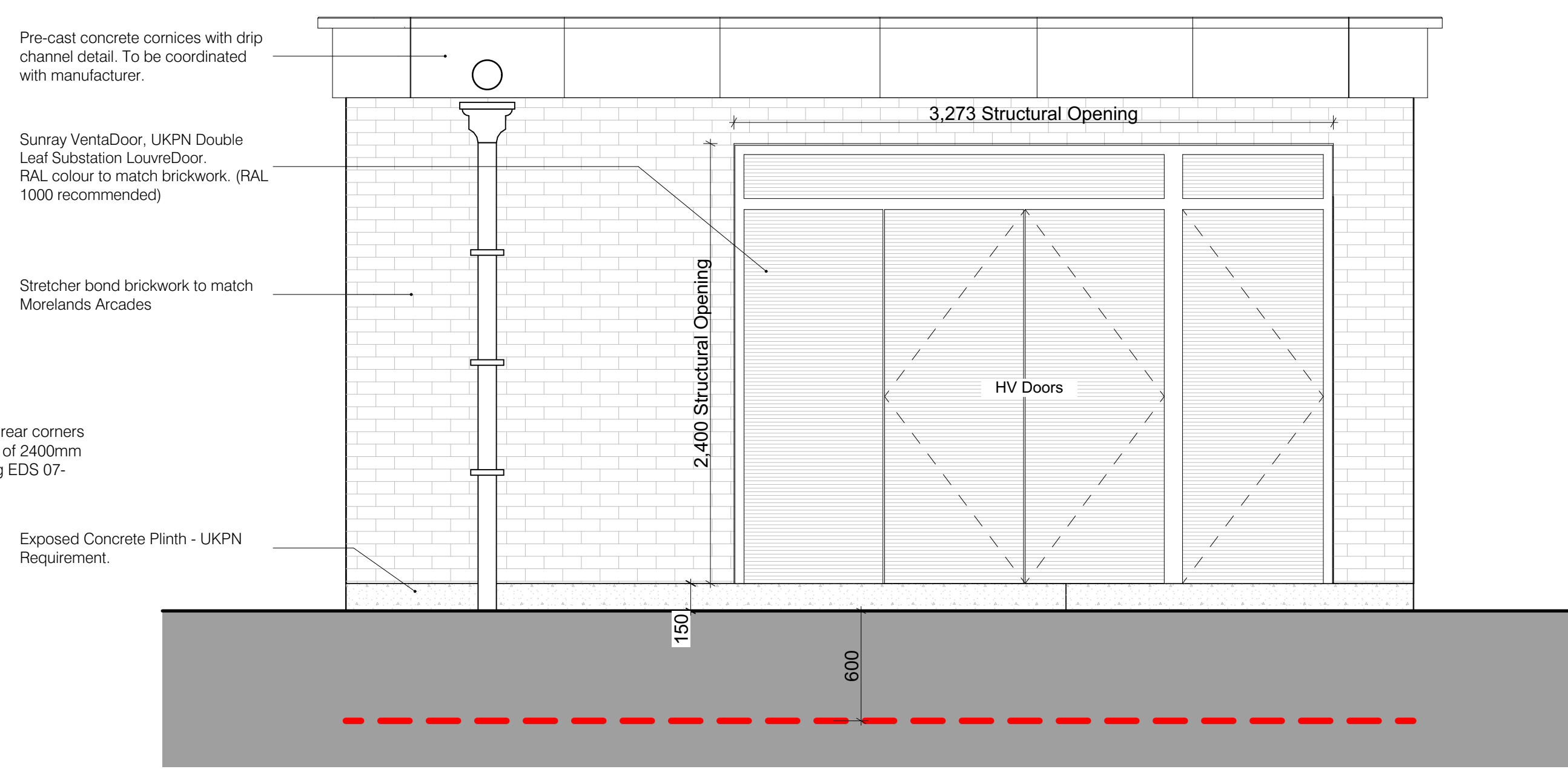
11 Substation South Elevation 1:25



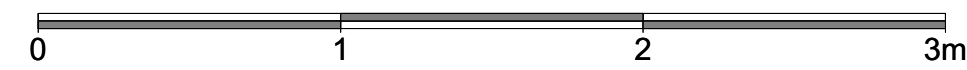
12 Substation West Elevation 1:25



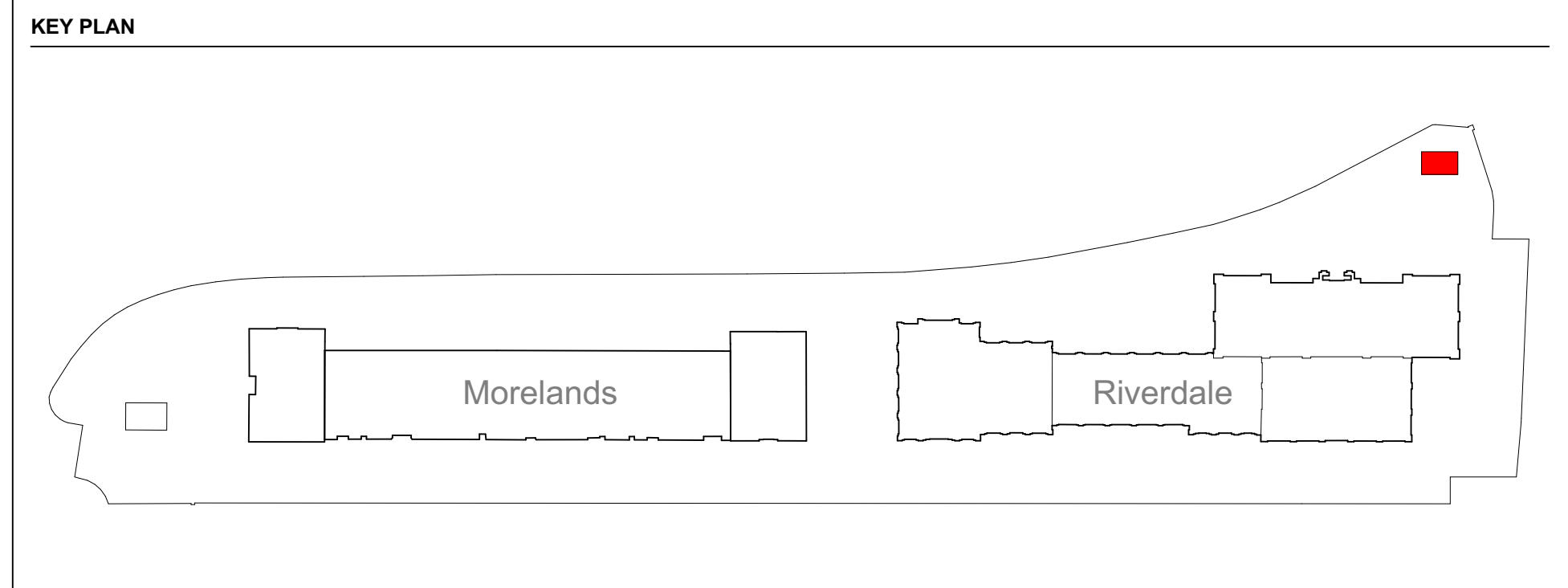
13 Substation North 1:25



14 Substation East Elevation 1:25



- NOTES**
- This drawing remains the copyright of Chapman Architects. Do not copy, transfer or re-assign this drawing in digital or hardcopy format to a third party without written consent of Chapman Architects.
  - Do not scale from drawings. Only use stated dimensions. Check all dimensions on site and please report any discrepancies to architect.
  - Drawings to be read in conjunction with other consultant's drawings and specifications.



rev	description	drawn	checked	date
C03	Issued for Procurement	GR	MP	08.09.21
C02	Issued for Procurement	PHL	MP	06.09.21
C01	Issued for Procurement	JW	MP	27.08.21
P01	Issued for Coordination	JW	GH	23.08.21
WIP	Issued for Coordination	JW	GC	20.08.21
WIP	Issued for Coordination	JW	GC	19.08.21

**Morelands & Riverdale Hampton**

**Proposed Substation 2 GA Elevations**

project ref	scale(s)	original paper size					
2101	1:25	A1					
name :							
project	originator	volume	level	type	role	number	
<b>MR</b>	<b>LD</b>	<b>CA</b>	<b>00</b>	<b>00</b>	<b>DR</b>	<b>A</b>	<b>6902</b>
status : suitability description :							
<b>S4</b> SUITABLE FOR MANUFACTURE / PROCUREMENT							
revision : revision description :							
<b>C03</b> CONSTRUCTION							

**CHAPMAN ARCHITECTS**  
T: 020 7631 5320 E: mail@chapmanarchitects.co.uk

**DOOR SETS**

**HV Door**  
Type -Sunray 'Ventadoor' Double doorset  
Supplied by - Sunray Doors , Sunray Engineering Ltd,  
Kingsworth Industrial Estate, Wotton Road, Ashford,  
Kent, TN23 6LL  
Tel 01233 639 039  
Colour RAL 1000  
Structural Opening - 3273mm wide x 2400mm high  
Locking - Externally - Briton knob, with Europrofile  
cylinder  
Internally - Panic Bar

**LV Door**  
Type -Sunray 'LouvreDoor' Bespoke Double doorset  
Supplied by - Sunray Doors , Sunray Engineering Ltd,  
Kingsworth Industrial Estate, Wotton Road, Ashford,  
Kent, TN23 6LL  
Tel 01233 639 039  
Colour RAL 1000  
Structural Opening Overall - 2025mm wide x 2400mm  
high  
Note - doors leafs to be equal sized within opening  
Locking - Externally - Briton knob, with Europrofile  
cylinder (note to be suited)  
Internally - Two way lock