

### 3.0 AVR VIEWS









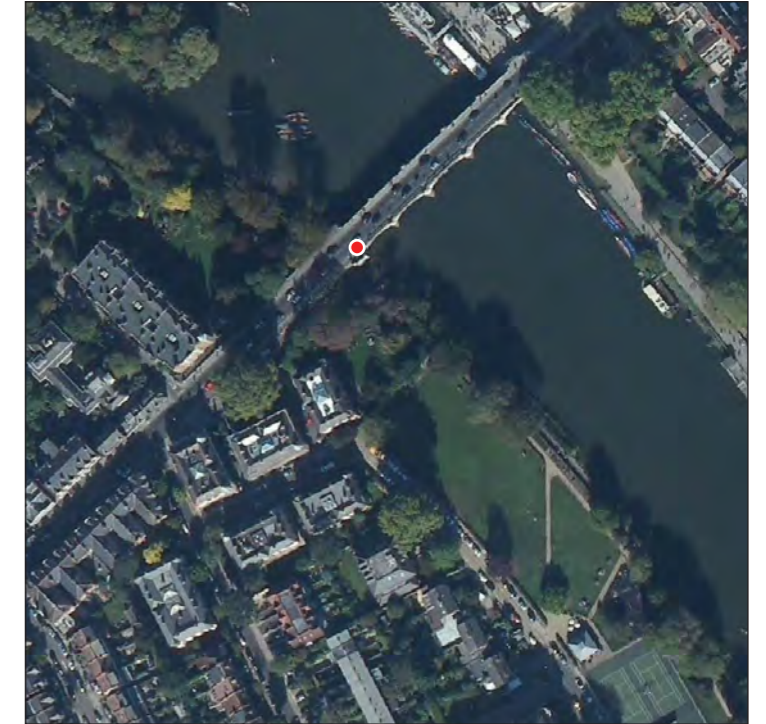
### 3.0 AVR VIEWS

#### Viewpoint 2 (Summer View) - Richmond Bridge, south western end - Verification Data

Viewpoint Reference	Description and Direction of View	AVR Level	Method	Easting	Northing	Height (mAOD)	Tripod Height (m)	Camera	Lens	Focal Length	Orientation	HFOV	Date	Time
2	Richmond Bridge, south western end, looking south east	AVR1	Verified	517694.864	174486.828	9.323	1.60	Canon 5D Mark II	Canon f/1.4 50mm	50mm	Landscape	39.6°	31/08/2018	10:29



Survey Reference Points



Viewpoint Location



Tripod Set-up Location



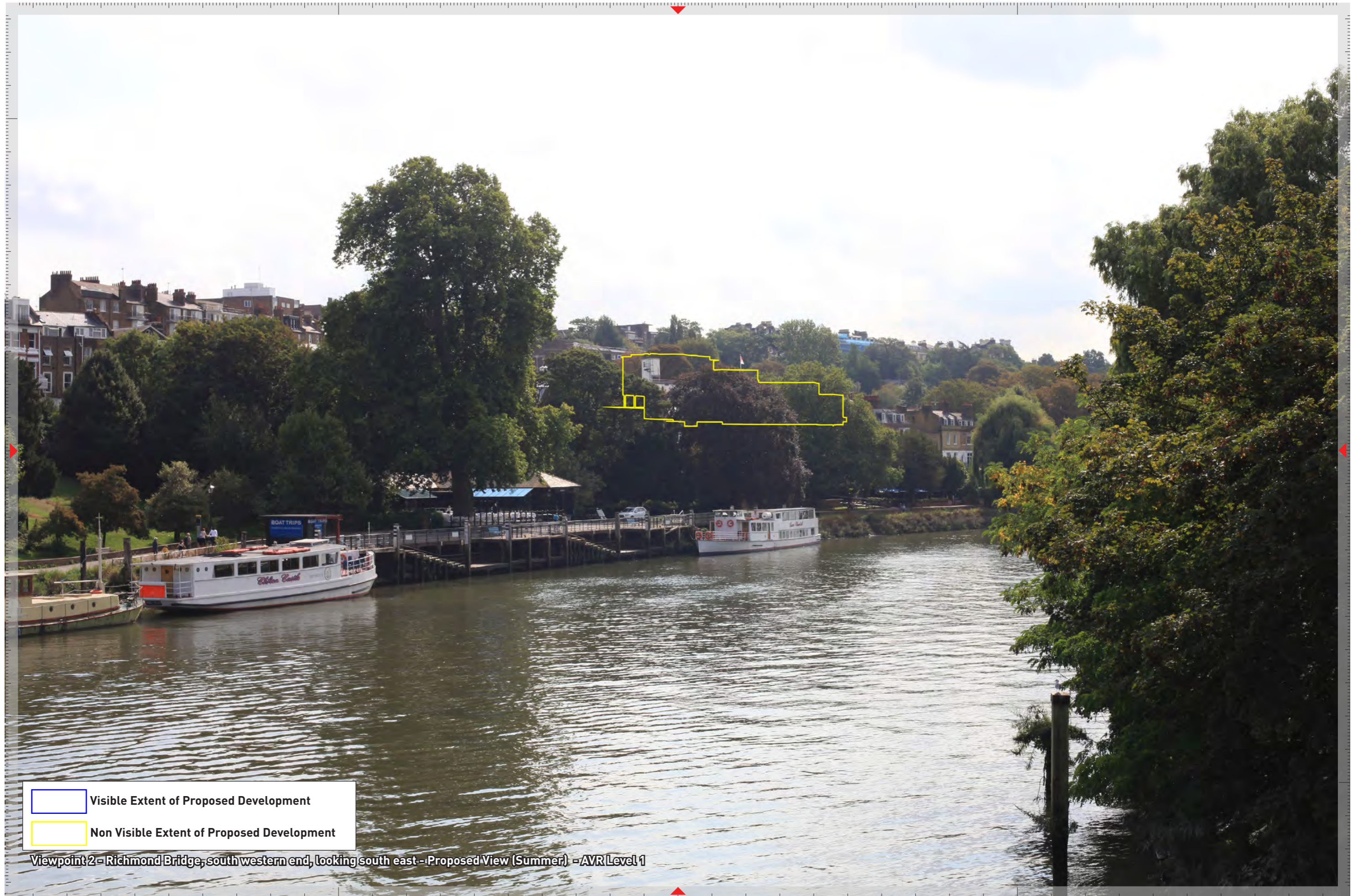
### 3.0 AVR VIEWS



Viewpoint 2 - Richmond Bridge, south western end, looking south east - Existing View (Summer)



### 3.0 AVR VIEWS



Visible Extent of Proposed Development  
Non Visible Extent of Proposed Development

Viewpoint 2 - Richmond Bridge, south western end, looking south east - Proposed View (Summer) - AVR Level 1







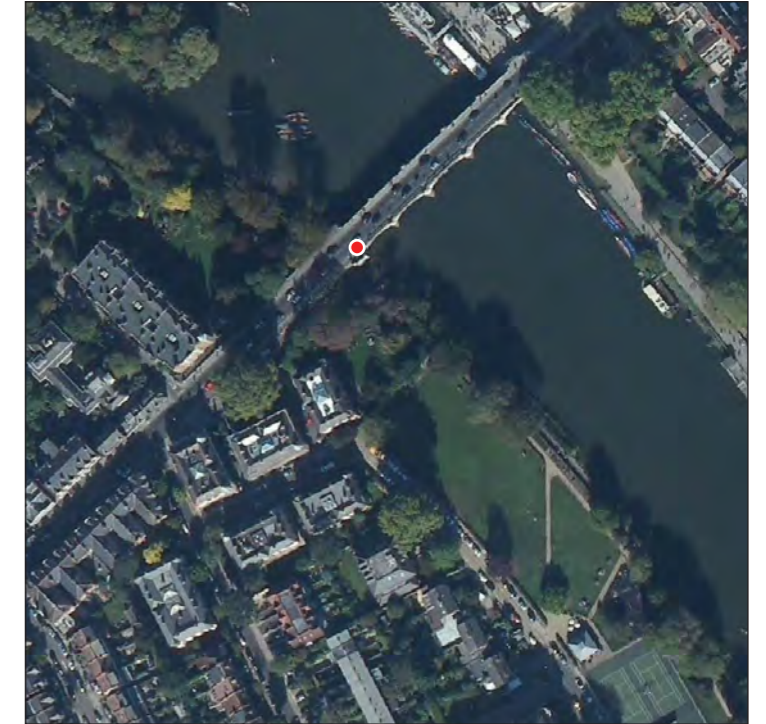
### 3.0 AVR VIEWS

#### Viewpoint 2 (Winter View) - Richmond Bridge, south western end - Verification Data

Viewpoint Reference	Description and Direction of View	AVR Level	Method	Easting	Northing	Height (mAOD)	Tripod Height (m)	Camera	Lens	Focal Length	Orientation	HFOV	Date	Time
2	Richmond Bridge, south western end, looking south east	AVR1	Verified	517695	174494	9	1.60	Canon 5D Mark II	Canon f/1.4 50mm	50mm	Landscape	39.6°	22/03/2021	14:47



Survey Reference Points



Viewpoint Location



Tripod Set-up Location



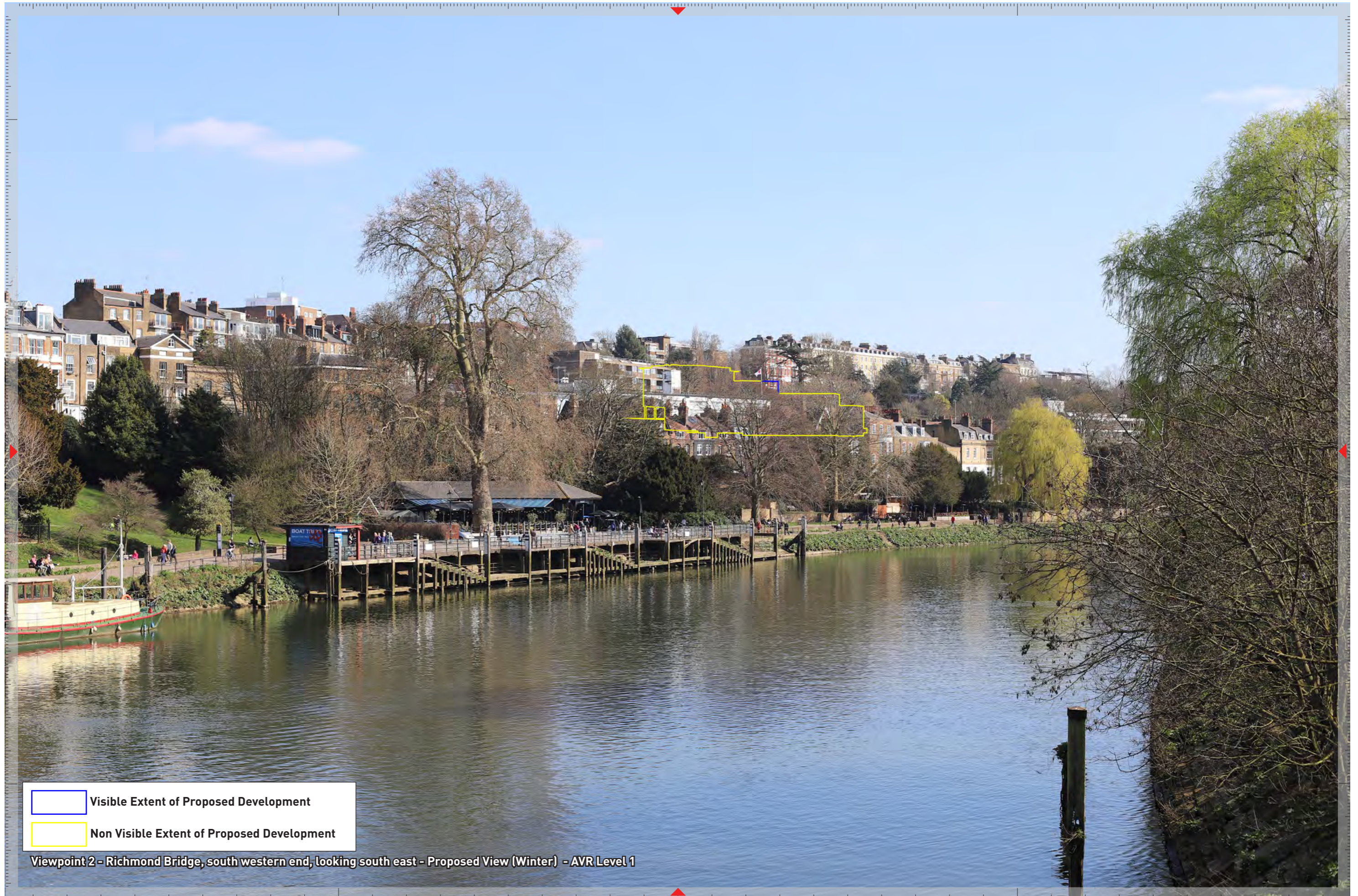
### 3.0 AVR VIEWS

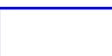



Viewpoint 2 - Richmond Bridge, south western end, looking south east - Existing View (Winter)



### 3.0 AVR VIEWS



 Visible Extent of Proposed Development  
 Non Visible Extent of Proposed Development

Viewpoint 2 - Richmond Bridge, south western end, looking south east - Proposed View (Winter) - AVR Level 1







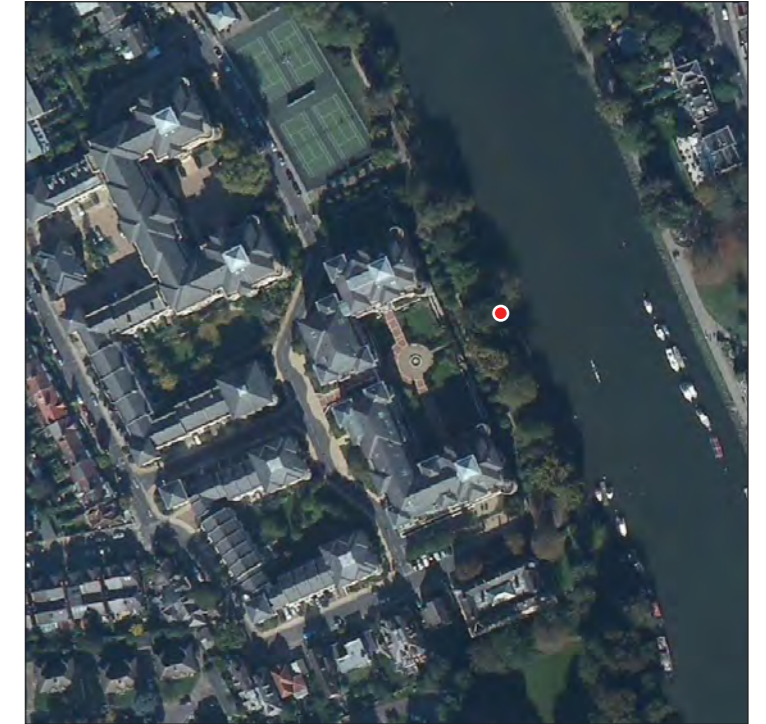
### 3.0 AVR VIEWS

#### Viewpoint 3 (Summer View) - River Thames Path, near Richmond Bridge Estate / Pelabon Gardens - Verification Data

Viewpoint Reference	Description and Direction of View	AVR Level	Method	Easting	Northing	Height (mAOD)	Tripod Height (m)	Camera	Lens	Focal Length	Orientation	HFOV	Date	Time
3	River Thames Path, near Richmond Bridge Estate / Pelabon Gardens , looking east.	AVR1	Verified	517890.525	174199.966	4.899	1.60	Canon 5D Mark II	Canon f/1.4 50mm	50mm	Landscape	39.6°	31/08/2018	10:11



Survey Reference Points



Viewpoint Location



Tripod Set-up Location



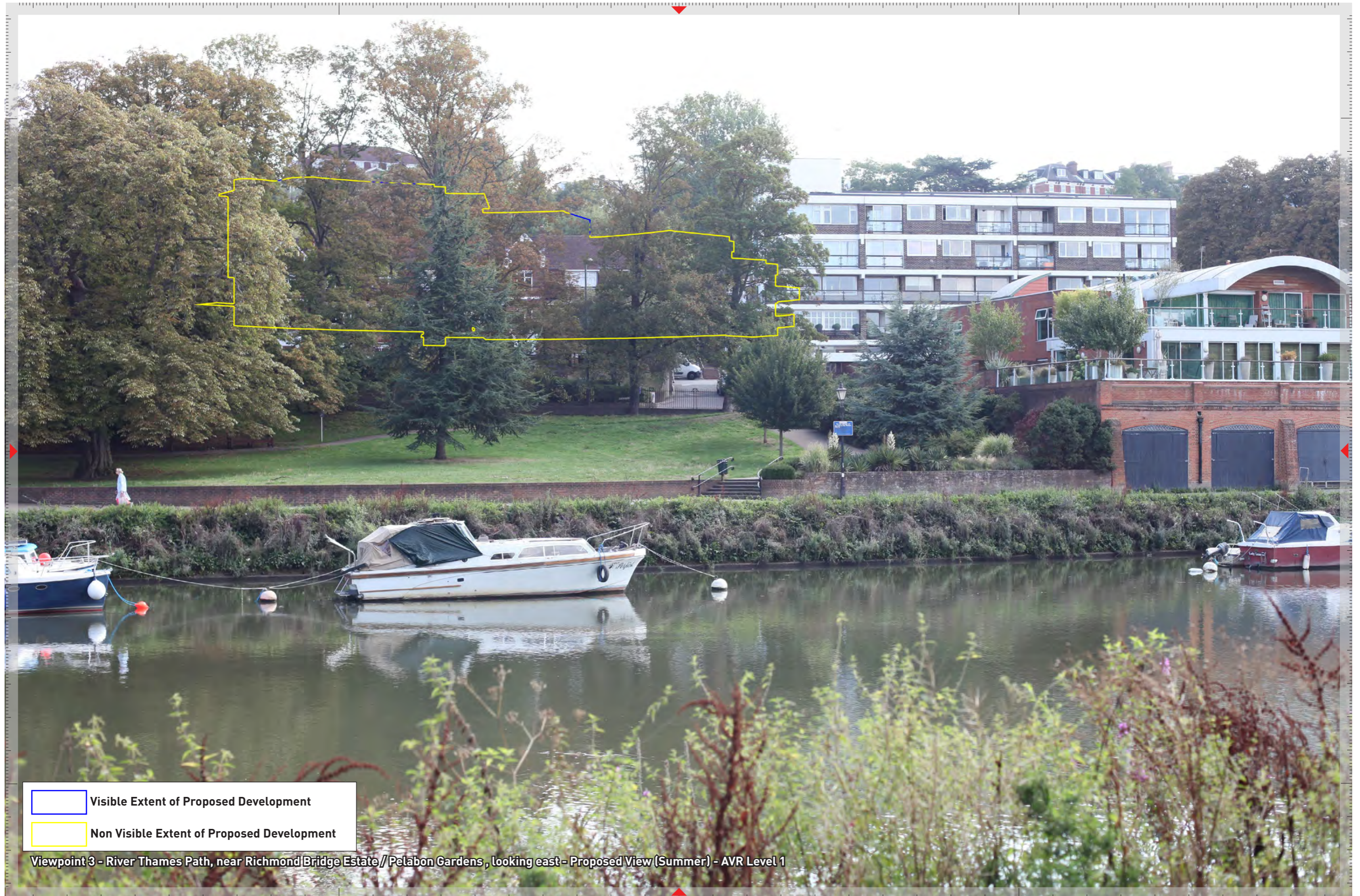
### 3.0 AVR VIEWS



Viewpoint 3 - River Thames Path, near Richmond Bridge Estate / Pelabon Gardens, looking east - Existing View (Summer)



### 3.0 AVR VIEWS









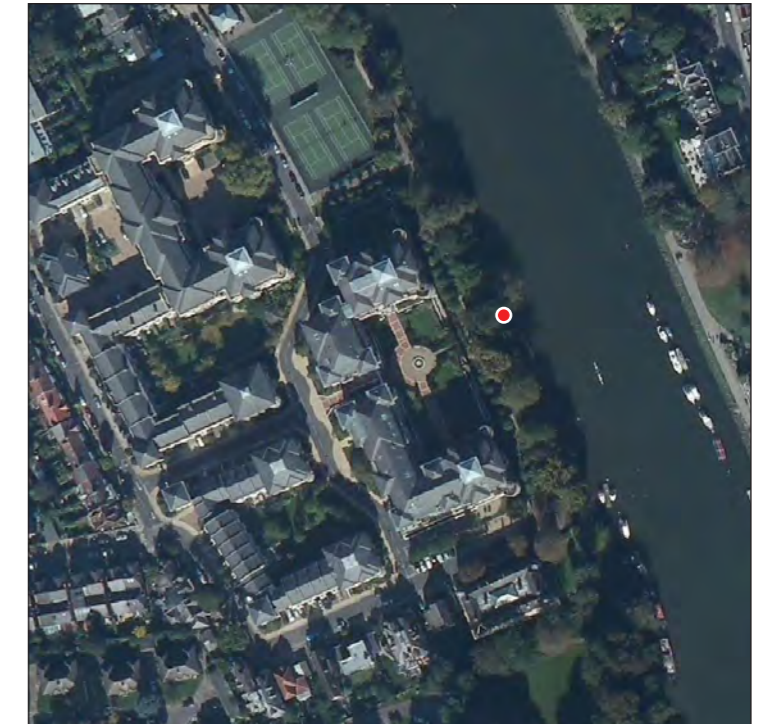
### 3.0 AVR VIEWS

#### Viewpoint 3 (Winter View) - River Thames Path, near Richmond Bridge Estate / Pelabon Gardens - Verification Data

Viewpoint Reference	Description and Direction of View	AVR Level	Method	Easting	Northing	Height (mAOD)	Tripod Height (m)	Camera	Lens	Focal Length	Orientation	HFOV	Date	Time
3	River Thames Path, near Richmond Bridge Estate / Pelabon Gardens , looking east.	AVR1	Verified	517890	174208	4	1.60	Canon 5D Mark II	Canon f/1.4 50mm	50mm	Landscape	39.6°	22/03/2021	15:06



Survey Reference Points



Viewpoint Location



Tripod Set-up Location



### 3.0 AVR VIEWS



Viewpoint 3 - River Thames Path, near Richmond Bridge Estate / Pelabon Gardens , looking east - Existing View (Winter)



### 3.0 AVR VIEWS



Visible Extent of Proposed Development  
Non Visible Extent of Proposed Development

Viewpoint 3 - River Thames Path, near Richmond Bridge Estate / Pelabon Gardens , looking east - Proposed View (Winter) - AVR Level 1







### 3.0 AVR VIEWS

#### Viewpoint 4 (Summer View) - Buccleuch Passage/ Petersham Road/Robins Court - Verification Data

Viewpoint Reference	Description and Direction of View	AVR Level	Method	Easting	Northing	Height (mAOD)	Tripod Height (m)	Camera	Lens	Focal Length	Orientation	HFOV	Date	Time
4	Buccleuch Passage/ Petersham Road/Robins Court looking north east.	AVR1	Verified	518010.559	174202.397	9.333	1.60	Canon 5D Mark II	Canon f/1.4 24mm	24mm	Landscape	73.7°	31/08/2018	08:08



Survey Reference Points



Viewpoint Location



Tripod Set-up Location



### 3.0 AVR VIEWS



Viewpoint 4 - Buccleuch Passage/ Petersham Road/Robins Court looking north east - Existing View (Summer)



### 3.0 AVR VIEWS









### 3.0 AVR VIEWS

#### Viewpoint 4 (Winter View) - Buccleuch Passage/ Petersham Road/Robins Court - Verification Data

Viewpoint Reference	Description and Direction of View	AVR Level	Method	Easting	Northing	Height (mAOD)	Tripod Height (m)	Camera	Lens	Focal Length	Orientation	HFOV	Date	Time
4	Buccleuch Passage/ Petersham Road/Robins Court looking north east.	AVR1	Verified	518011	174209	9	1.60	Canon 5D Mark II	Canon f/1.4 24mm	24mm	Landscape	73.7°	22/03/2021	14:33



Survey Reference Points



Viewpoint Location



Tripod Set-up Location



### 3.0 AVR VIEWS



Viewpoint 4 - Buccleuch Passage/ Petersham Road/Robins Court looking north east - Existing View (Winter)



### 3.0 AVR VIEWS





