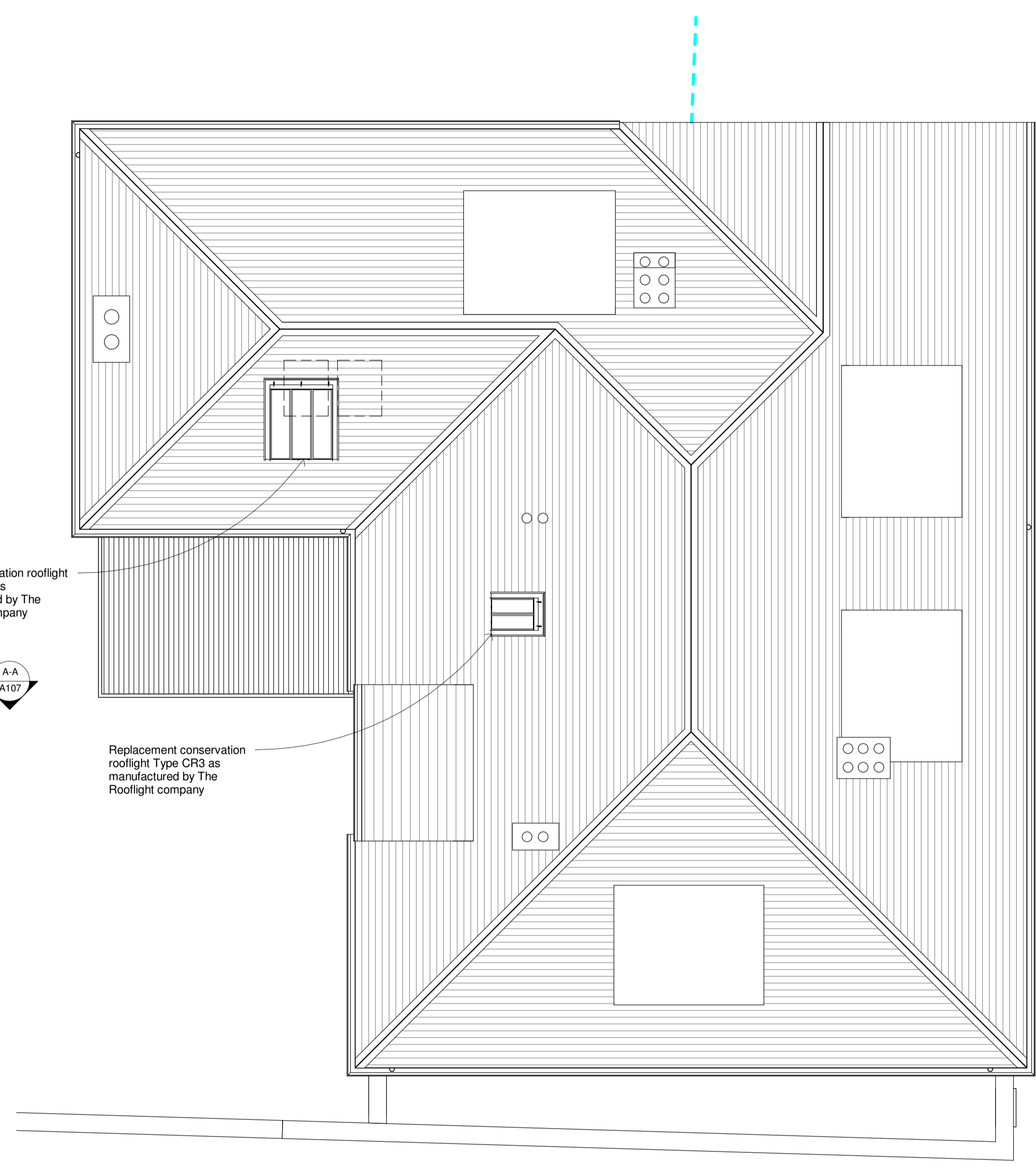


Proposed Second Floor
1 : 50



Proposed Roof Plan
1 : 50

Space Standards (THS in brackets)
Apartment 4 - Two-bed - 4 Person

Gross Internal Area	79.0 sqm	(70)
Kitchen/Dining/Living	34.5 sqm	(24)
Bedroom 1	13.0 sqm	(11.5)
Bedroom 2	12.5 sqm	(11.5)
Built-in Storage	2.7 sqm	(2)

Rev	Revision Description	Drawn	Check	Date
H	Areas Corrected	WH	KS	20/08/19
G	Amendments to room sizes	JB	ks	16/07/19
F	Balconies amended	JB	ks	05/03/19
E	Ensuite added to Bedroom 1	KS	jb	10/01/19
D	Second floor altered to one apartment (4); chimney breasts reinstated	KS	jb	14/12/18
C	Dimensions added; minor revisions to layout	KS	jb	14/09/18
B	Minor changes to layout; areas added	KS	jb	29/06/18
A	Projecting balconies and terrace added; northern chimney breast removed; alterations to layouts	KS	jb	20/06/18

Greenspace Architects Ltd
 The Old Town Hall
 The Square, Ellesmere
 Shropshire SY12 0EP
 Tel +44(0)1691 623899
 e-mail:
 greenspace@greenspacearchitects.co.uk
 web: www.greenspacearchitects.co.uk

Project **The Old King's Head,
Hampton Wick**

Title **Proposed Second Floor and
Roof Plans**

Scale @ A1	Scale @ A3	Drawn By	Checked By	Date
1 : 50	1:100	GE	KS	14/05/18

Job No.	Sheet No.	Rev.
18-20	A104	H