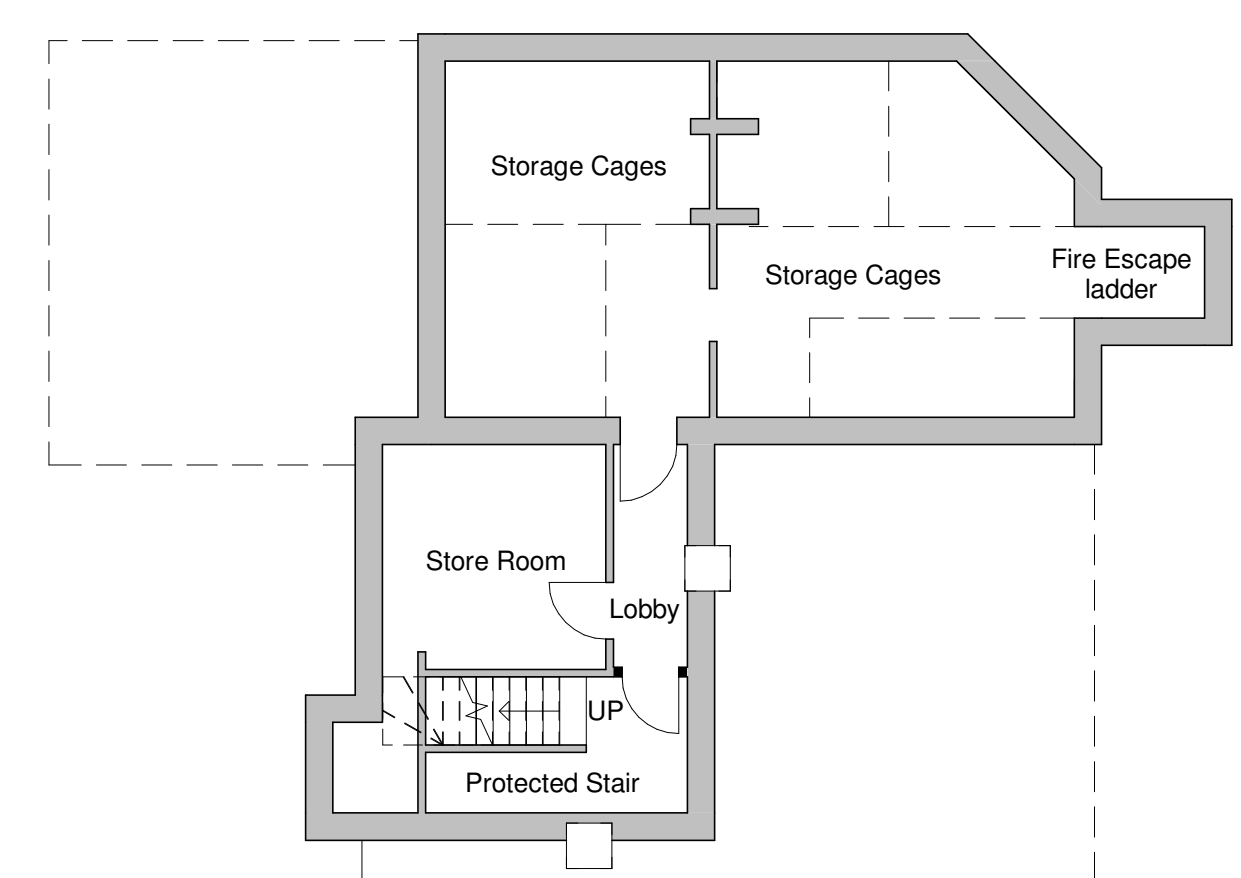


Space Standards (THS in brackets)

Apartment 1 - One-bed - 2 Person
 Gross Internal Area 52.1 sqm (52)
 Kitchen/Dining/Living 33.0 sqm (24)
 Bedroom 1 (Double) 12.0 sqm (11.5)
 Built-in Storage Area 2.88 sqm (2)
 Built-in Storage Area 2.88 sqm (2)

Apartment 2 - Two-bed - 3 Person
 Gross Internal Area 61.0 sqm (61)
 Kitchen/Dining/Living 24.0 sqm (24)
 Bedroom 1 14.0 sqm (11.5)
 Bedroom 2 9.0 sqm (7.5)
 Built-in Storage Area 2.1 sqm (2)

Apartment 3 - Two-bed - 4 Person
 Gross Internal Area 70.0 sqm (70)
 Kitchen/Dining/Living 24.0 sqm (24)
 Bedroom 1 16.0 sqm (11.5)
 Bedroom 2 13.0 sqm (11.5)
 Built-in Storage Area 2.7 sqm (2)



Rev	Revision Description	Drawn	Check	Date
J	Chimney breast retained and juliet balconies omitted	JB	KS	12/09/19
I	First Floor Apartment Layouts Amended	WH	KS	20/08/19
H	Amendments to room sizes	JB	KS	16/07/19
G	Party walls amended	JB	KS	21/06/19
F	French door removed and window introduced	JB	KS	12/03/19
E	Balconies amended	JB	KS	05/03/19
D	Dimensions added; minor revisions to layout	KS	jb	14/09/18
C	Minor changes to layout; Areas added	KS	jb	20/06/18
B	Projecting balconies and terrace added; northern chimney breast removed; alterations to layouts	KS	jb	20/06/18
A	Angle of southern wall revised and access to Apartment 1 altered; entrance lobby added to apartment 3; Notes added	KS	jb	15/06/18

Greenspace Architects Ltd
 The Old Town Hall
 The Square, Ellesmere
 Shropshire SY12 0EP
 Tel: +44(0)1681 623889
 e-mail: greenspace@greenspacearchitects.co.uk
 web: www.greenspacearchitects.co.uk

Project **The Old King's Head, Hampton Wick**

Title **Proposed Basement, Ground and First Floor Plans**

Scale @ A1	Scale @ A3	Drawn By	Checked By	Date
As indicated	1:100/1:200	KS	ge	08/06/18

Drawing Number	Job No.	Sheet No.	Rev.
18-20	A103	K	