
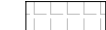






Do not scale.
Any discrepancies should be reported immediately to the Architect.
If in doubt ask.
This drawing is copyright of the Architect.

Drawing Status:

Planning

Key:

-  Impermeable hard surface
-  Permeable hard surface
-  Bicycle stand
-  Wheelie bins 240L
-  Sewage manhole
-  Sewage drainage pipework



Lux Construction Design & Build

211 Station Rd
LONDON HA1 2TP

020 3633 5877
architect Katashi Yamamoto
k.yamamoto@lux-construction.uk
www.lux-construction.uk

Project title

9 & 9B Cheyne Ave
London TW2 6AN

Drawing title

Proposed Drainage Plan

Scale

1:200@A3

Date

Sep 2021

Project

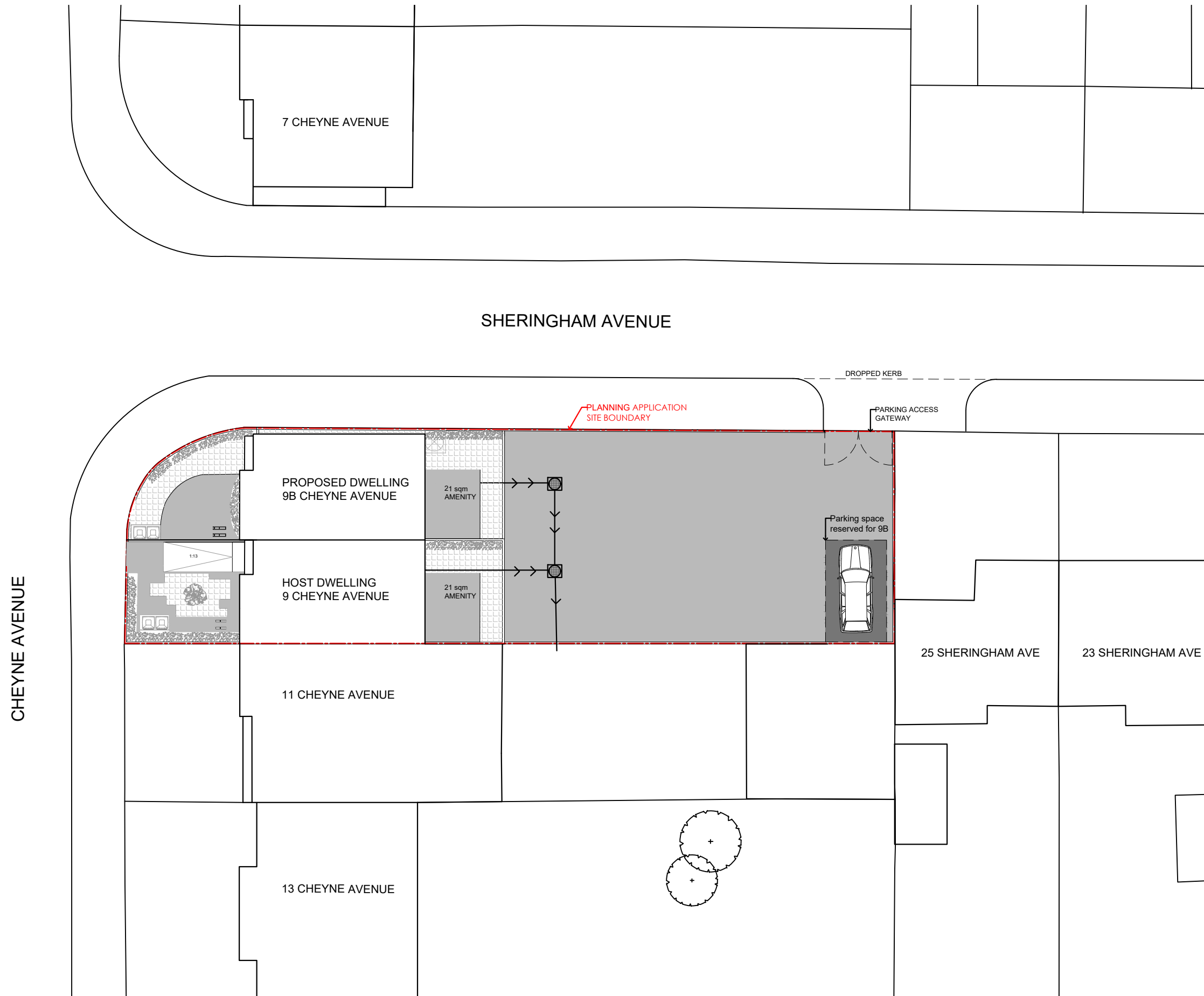
739

Drg.no.

201

Revision

v.3



0 1 2 5m