

Common Materials

- 1. Natural slate roof tiles
- 2. Zinc cladding
- 3. Brown-toned metalwork
- 4. Clear laminated glass
- 5. Grey backpainted glass panels
- 7. Black grey window frames

Block A Brickwork

- A1. Main brick
- A2. Lighter Accent Brick
- A3. Darker Accent Brick

Block B Brickwork

- B1. Main Brick
- B2. Lighter Accent Brick
- B3. Darker Accent Brick

Block C Brickwork brick

- C1. Main brick
- C2. Lighter Accent Brick
- C3. Darker Accent Brick

3	For Planning Submission	09/06/2021	FS	OM
2	Update Desing Freeze	23/07/2021	FS	OM
1	Draft Planning Submission	09/07/2021	FS	OM
Revision	Description	Date	Drawn	Checked

77 Endell Street
London WC2H 9DZ
T +44 (0)20 7240 7766
W scottbrownrigg.com

Client's Name
Star Land Realty UK Ltd.

Job Title
Barnes Hospital Site

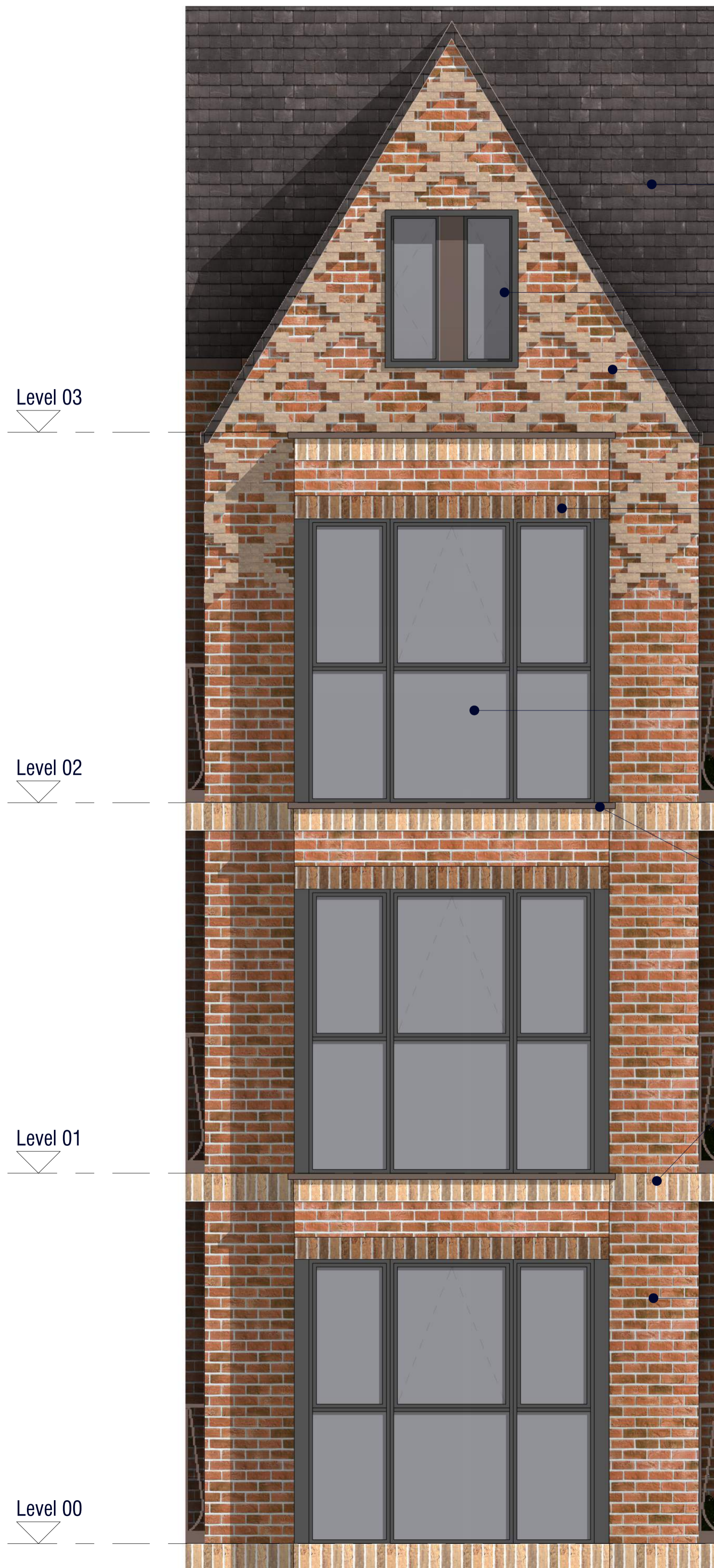
Drawing Title
Typical Bay - Gable

Scale
1 : 25 @A1

SBR Project No.
18387

SBR Project No. Originator Volume Level Type Role Number
18387-SBR- ZZ-XX-DR-A-21100

Subsidiy Code Status Rev
S4 FOR STAGE APPROVAL **3**



Natural Slate Roof (1)

Feature gable window in deep frame (3/4/6)

Decorative brick detail in contrasting accent brick type (A3/B2/C2)

Soldier course detail above window in contrasting brick type

Triple aspect full height bay window (4/7)

Edge detail (3)

Horizontal string course detail between levels in contrasting accent brick type (A2/B3/C3)

Main brick in stretcher bond (A1/B1/C1)

Level 03

Level 02

Level 01

Level 00



4 Typical Gable 3D

1 Typical Gable Elevation