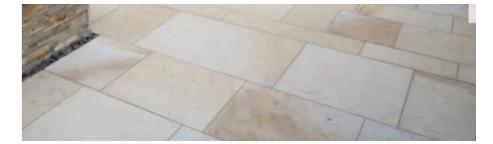


5 Landscape Strategies

Hard Landscape Strategy



Surface Type 01
Permeable Tegula Concrete Setts
Color: 95% Burnt Ochra
5% Charcoal



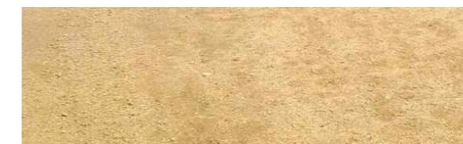
Surface Type 02
Natural stone paving



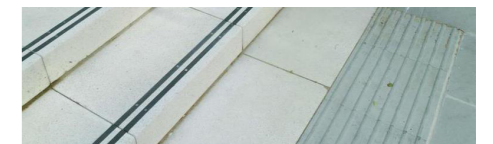
Surface Type 03
Reclaimed Brick from site



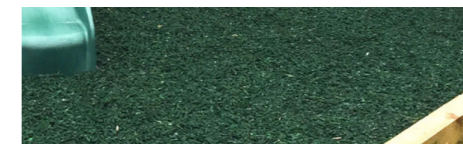
Surface Type 04
Grasscrete



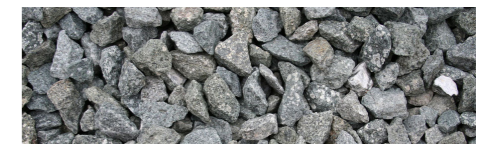
Surface Type 05
Self binding gravel



Surface Type 06
Natural stone tactile paving



Surface Type 07
Eco Rubber Play chippings
Colour: Green



Surface Type 08
Granite chippings
Size: 20-40mm

Approach to surfaces

The aspiration to develop high quality landscape spaces across the site has led to the selection of a number of materials appropriate for the different spaces within the development. Hard landscape elements selected are to be of a physically robust quality, appropriate to the site's intensive use.

Materials that have been selected are sympathetic to the local context and are appropriate to their location and use.

The materials detailed here form a structured palette that are coordinated to create visual unity and integrity within the existing surrounding landscape.

The materials selected for the palette will provide cohesion to the hard landscape areas within the development. They will convey a unifying character, and consideration has been given to the appropriateness of the materials with regard to place making

and their long-term performance, durability and maintenance requirements. Consideration has been given to materials' impact on the environment such as sourcing, cost, and project sustainability.

All surface materials will be UK origin.

5 Landscape Strategies

Furniture Strategy



Furniture approach

The overall strategy includes using a cohesive palette of furniture, fixings and equipment (FF&E) elements across all areas of the site. The materials used form a structured palette, coordinated to create visual unity and integrity within the landscape and with the adjoining architecture. The following selection of proposed elements have been selected to be of a physically robust quality appropriate to the site. They will convey a unifying character to the development and consideration has

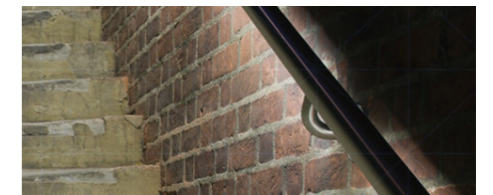
be given to the appropriateness of the materials with regard to place making and their long-term performance.

The design and placement of all the elements has responded to both safety and security requirements, as well as how the site is navigated and understood on an intuitive level.

Furniture Strategy



1 Type 1:
Oak Bench
Size: 450 x 500 x 2000mm



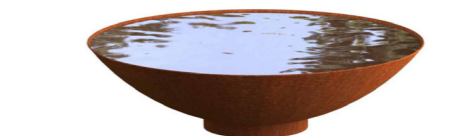
2 Type 2:
Garda Handrail
Supplier: DW Windsor or similar approved



3 Type 3:
RT R14 Heavy Duty Telescopic Bollard
Supplier: Marshalls or similar approved



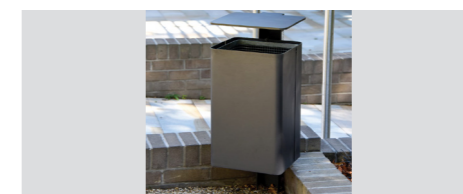
4 Type 4:
Bronze Ground Plate



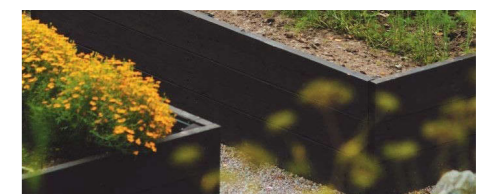
5 Type 5:
Corten Water Bowl



6 Type 6:
Bike Blocq
Supplier: mmcite



7 Type 7:
Bike Blocq
Supplier: mmcite



8 Type 8:
Black painted larch timber sleeper planters

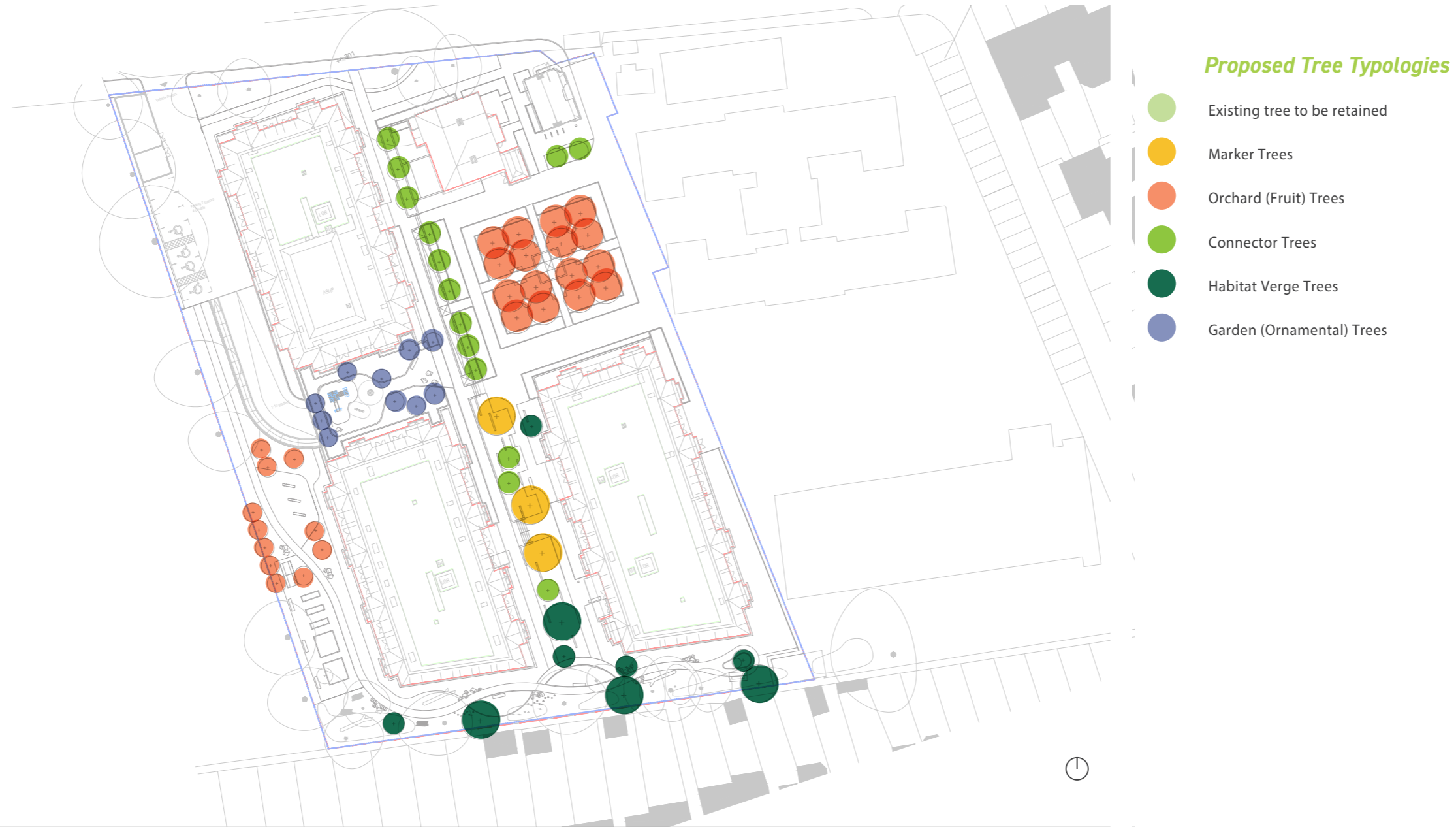


9 Type 10:
Land Picnic Bench
Supplier: Broxap

All images used in this presentation remain the property of the copyright holder(s) and are used for the purposes of this presentation only.

5 Landscape Strategies

Tree Strategy



Tree Strategy

New trees have been chosen to create visual and spatial indicators and assist with the navigation within the site. Key species are positioned to maximise the quality and uniqueness of the site, notably within the Orchard Garden and from key viewpoints by framing and focusing.

The trees selected will also bring seasonal variation to the site through leaf colour, form, and additional benefits to wildlife and site biodiversity. The proposed trees will create green corridors to and from existing surrounding green spaces in Barnes.

The proposed trees in each location are selected for one of 5 purposes:

Marker Trees

- > aid in wayfinding and indicate key locations throughout the pedestrian journey

Orchard (Fruit) Trees

- > productive and immersive, adding seasonal interest

Connector Trees

- > providing rhythm along the main pedestrian route and enabling a connection to biophilia

Habitat Verge Trees

- > high ecological, biodiversity, and habitat value

Garden (Ornamental) Trees

- > providing seasonal interest, beautiful aesthetic views, & biodiversity value

All images used in this presentation remain the property of the copyright holder(s) and are used for the purposes of this presentation only.

5 Landscape Strategies

Tree Strategy



Proposed species

- *Pinus cembra*
- *Carpinus betulus 'A Beeckman'*
- *Ilex aquifolium 'JC van Tol'*
- *Amelanchier lamarckii*
- *Syringa vulgaris*
- *Acer campestre Elsrijk*
- *Betula pendula*
- *Liriodendron tulipifera*
- *Malus domestica*
- *Prunus domestica 'Czar'*
- *Pyrus cerasus 'Morello'*
- *Pyrus communis*

Tree Strategy

The variety of trees selected have been carefully considered to include both deciduous and evergreen species, with a focus on native trees. Pollinator species are also prioritised. The placement of the different species of trees was carefully considered in order to create a cohesive, yet interesting journey through the trees as one moves through the site.

Total number of proposed trees: 64

5 Landscape Strategies

Tree Strategy

Street Trees



Acer campestre Elsrijk



Betula pendula



Habitat Verge



Pinus cembra



Carpinus betulus 'A Beeckman'



Ilex aquifolium 'JC van Tol'



Prunus accolade



Markers



Liriodendron tulipifera



Orchard Fruit Trees



Malus domestica



Prunus domestica 'Czar'



Prunus cerasus 'Morello'



Pyrus communis



Garden Ornamentals



Amelanchier lamarckii



Syringa vulgaris



All images used in this presentation remain the property of the copyright holder(s) and are used for the purposes of this presentation only.

5 Landscape Strategies

Soft Landscape Strategy



Planting approach

The soft landscape palette has been developed to add a strong, well-vegetated character to the site and will form a rich, verdant backdrop to the proposed development. Species have been chosen from an appropriate palette to match the anticipated micro climate, clearly define spaces, soften the appearance of the development, help create variation in character, enhance ecological diversity, and provide visual interest and colour throughout the seasons.

The proposed planting matrices have been developed from

various sources which include;

- > Biodiversity Action Plan for London Borough of Richmond Upon Thames
- > Barnes Hospital Ecological Appraisal
- > The RHS recommendations for pollinator-friendly planting

General principles

The following principles have been applied to the soft landscape design:

- > The selection of plants will consider the form and eventual scale of the species in relation to the spacing and their configuration. The future maintenance requirements vegetation and their impact on buildings and access routes will also be taken into account;
- > The selection of shrub planting will enhance the design of the buildings. The use of planting which will respond to the articulation of the spaces by framing and terminating views, celebrating entrances and thresholds and defining pedestrian routes and connections;

All images used in this presentation remain the property of the copyright holder(s) and are used for the purposes of this presentation only.

5 Landscape Strategies

Soft Landscape Strategy

BIODIVERSE AMENITY PLANTING - MIX 01



Anemone hupehensis
'September Charm'



Bergenia 'Bressingham
White'



Daphne odora
'Aureomarginata'



Geranium sanguineum
album



Narcissus 'White Lion'



Paeonia lactiflora
'Duchesse de Nemours'



Pittosporum Tobira
Nanum



Stipa tenuissima



Veronica spicata 'Alba'



Skimmia japonica 'Kew
White'



Perovskia 'Blue Spire'

BIODIVERSE AMENITY PLANTING - MIX 02



Acanthus mollis



Astrantia major 'Large
White'



Galanthus nivalis



Geranium sylvaticum
'Album'



Helleborus niger



Tiarella 'Spring
Symphony'



Hosta sieboldiana
'Elegans'



Nicotiana langsdorffii



Pittosporum Tobira
Nanum



Paeonia lactiflora
'Duchesse de Nemours'



Veronica spicata 'Alba'



Viburnum x hillieri
'Winton'

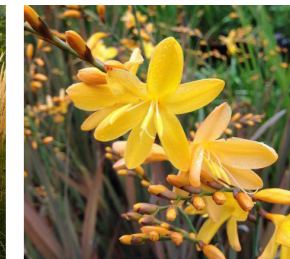
ENTRANCE MIX - SENSORY PLANTING



Achillea 'Terracotta'



Calamagrostis x
acutiflora 'Karl Foerster'



Crocus 'Solfatare'



Echinacea purpurea
'Skipper Orange'



Eschscholzia californica



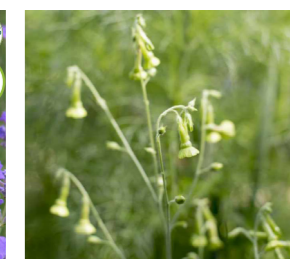
Hemerocallis 'Autumn
Red'



Kniphofia bees lemon



Lavandula angustifolia
'Hidcote'



Nicotiana langsdorffii



Stipa tenuissima



Verbena bonariensis

Native species

Evergreen and semi evergreen species :
winter shelter for wildlife

RHS "Plant for pollinators" species

Fruits/seeds for wildlife

All images used in this presentation remain the property of the copyright holder(s) and are used for the purposes of this presentation only.