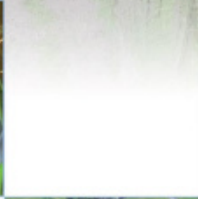
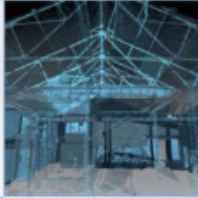


**Barnes Hospital,
Richmond**
Desk Based Assessment

AOC Project Number 24064

July 2021



ARCHAEOLOGY

| HERITAGE

| CONSERVATION

Barnes Hospital, Richmond

Desk Based Assessment

On Behalf of:

Star Land Realty UK Ltd
4th Floor Reading Bridge House,
George Street,
Reading,
United Kingdom,
RG1 8LS

LS Estates Ltd
20 Little Britain,
London,
EC1A 7DH
United Kingdom

National Grid Reference (NGR):

TQ 21780 75680

AOC Project No:

24064

Prepared by:

Gary Millward

Illustration by:

Gary Millward

Date of Report:

28/07/2021

This document has been prepared in accordance with AOC standard operating procedures.

Author: G. MILLWARD

Date: 28/07/2021

Approved by: L.ROY

Date: 28/07/2021

Draft/Final Report Stage: Draft

Date: 28/07/2021

Enquiries to:

AOC Archaeology Group
Edgefield Industrial Estate
Edgefield Road
Loanhead
EH20 9SY

Tel. 0131 440 3593

Fax. 0131 440 3422

e-mail. admin@aocarchaeology.com

Contents

	Page
List of illustrations	4
List of plates	4
List of appendices	4
1 NON-TECHNICAL SUMMARY	5
2 INTRODUCTION	6
2.1 Development Site	6
2.2 Development Proposal	6
2.3 Government and local planning policies	6
2.4 Planning considerations pertaining to the site	10
2.5 Limitations of Scope	10
3 OBJECTIVES.....	11
4 METHODOLOGY	11
4.1 Standards.....	11
4.2 Data sources	12
4.3 Report structure	12
5 ARCHAEOLOGICAL AND HISTORICAL EVIDENCE.....	12
5.1 Prehistoric and Roman (8000 BC-AD 410)	13
5.3 Early Historic and Medieval (AD 410-1600).....	13
5.4 Post-medieval (AD 410-1900).....	14
5.5 Modern (AD post 1900).....	15
6 WALKOVER SURVEY	15
7 CONCLUSION	16
7.1 Direct impacts.....	16
8 REFERENCES.....	18
8.1 Bibliographic References	18
8.2 Cartographic References	19
8.3 Archive references.....	19

List of illustrations

Figure 1: Site Location Map

Figure 2: Designated Heritage Assets within the 500m Study Area

Figure 3: Non Designated Heritage Assets within the 500m Study Area

Figure 4: Extract from Rocque, 1754

Figure 5: Extract from Ordnance Survey, 1870

Figure 6: Extract from Ordnance Survey, 1897

Figure 7: Extract from Ordnance Survey, 1913

List of plates

Plate 1: View north to Old Mortlake Burial Ground Lodge and Southern Entrance

Plate 2: View east from Old Mortlake Burial Ground to Barnes Hospital, The Site

Plate 3: View south east from North Worple Way to Barnes Hospital, The Site

Plate 4: View south from North Worple Way to Barnes Hospital, The Site

Plate 5: View east of Enid Balint Centre - 1904 building, Barnes Hospital

Plate 6: View south west of 1930s building, Barnes Hospital

List of appendices

Appendix 1: Site Gazetteer

1 NON-TECHNICAL SUMMARY

- 1.1 AOC Archaeology Group was commissioned by Star Land Realty UK Ltd to undertake an Archaeological Desk Based Assessment with regards to a proposed development at Barnes Hospital, Mortlake. The proposed development site, hereafter referred to as “The Site” lies within the local authority administrative area of the London Borough of Richmond upon Thames.
- 1.2 The assessment has established that The Site has likely been part of the agricultural landscape to the south of Mortlake until the construction of Barnes Hospital. Little activity from prehistory up until the medieval period has been recorded within the vicinity of The Site. Historic map evidence indicates The Site has been an open field until the construction of Barnes Hospital in 1889 and in all probability throughout the post-medieval period and as such the potential for discovering relatively undisturbed and hitherto unknown archaeological remains within The Site cannot be discounted. Overall, there is considered to be a Low potential for remains of prehistoric to Roman date to be present, a Low potential for remains of Early Historic and medieval periods and a Low potential for remains of post-medieval date. There is a Moderate to High potential for the remains of modern date to be present on The Site, dating to the construction of Barnes Hospital in 1889 and its subsequent expansion and development.
- 1.3 In order to investigate the potential for further remains to survive beneath the Site a programme of archaeological works may be required. Such works would be required to enable any significant archaeological remains to be identified, assessed and recorded. The exact scope and extent of any programme of archaeological works required should be agreed in advance with the Greater London Archaeological Advisory Service (GLAAS) acting as advisors to the London Borough of Richmond upon Thames on archaeological matters. The programme of work may include geophysical survey and/or archaeological evaluation, prior to development. If significant archaeological remains were encountered, then further archaeological fieldwork, post-excavation analysis and reporting, including publication may also be required. Any such requirement will be determined by the GLAAS acting as advisors to the London Borough of Richmond upon Thames on archaeological matters.
- 1.4 Five of the Barnes Hospital buildings within The Site are locally listed as Buildings of Townscape Merit. Three of these buildings are due for demolition under the current development proposal and the principle of their removal was agreed through planning permission ref. 18/3642/OUT. Although normal development rights are not affected by the Buildings of Townscape Merit status the London Borough of Richmond upon Thames has a presumption against the demolition of Buildings of Townscape Merit. The Council policy is to only grant consent where it is assured that retention and adaption is not possible and where the proposed replacement is consistent with other policies and exhibits a high standard of design that would complement the surrounding area. The impacts upon the setting and cultural value of the locally listed Buildings of Townscape Merit within The Site as well as impacts on the settings of designated assets beyond the Site boundary are addressed in full in the Heritage and Townscape Statement prepared by Montagu Evans that forms part of this application and, as such, will not be assessed further here.

2 INTRODUCTION

2.1 Development Site

- 2.1.1 The proposed development site, hereafter referred to as “The Site”, is located at Barnes Hospital, Mortlake. The Site consists of the western half of the footprint of the current Barnes Hospital, Mortlake. It is bounded to the north by South Worple Way, to the west by Mortlake Cemetery, and to the east by Barnes Hospital buildings, with South Worple Avenue beyond. To the south it is bounded by the back gardens of houses that face south onto Grosvenor Avenue. The site centres on NGR: TQ 21780 75680 (Figure 1).
- 2.1.2 The British Geological Survey GeoIndex (BGS 2021) records the bedrock on the Site as part of the Thames Group which is composed of clay, silt, sand and gravel. London Clay Formation was formed 34 to 55 million years ago, during the Eocene epoch with a superficial deposit of sand and gravel.
- 2.2.2 The Site occupies flat topography between c.10m and 3.38m AOD contour lines. The Site is currently occupied by a number of disused hospital buildings and car parking areas.

2.2 Development Proposal

- 2.2.1 Star Land Realty UK Ltd and LS Estates, commissioned AOC to undertake an Archaeological Desk Based Assessment of the site proposed for residential development at Barnes Hospital, Mortlake.
- 2.2.2 On 14 September 2020, Outline Planning Permission (‘OPP’) was granted for the redevelopment of the whole Barnes Hospital campus (ref. 18/3642/OUT), which comprised three development plots: (1) the residential plot, (2) the Special Educational Needs (SEN) School and (3) the health centre.
- 2.2.3 Whilst all three parts are still being delivered, it is now proposed that these will be brought forward on an individual site basis rather than through one outline permission and subsequent reserved matters. This planning application therefore relates only to the residential plot of the wider campus and will deliver 109 units.

2.3 Government and local planning policies

2.3.1 *National Planning Policy Guidelines*

National Planning Policy Framework (NPPF)

- 2.3.2 National Planning Policy Framework (NPPF) was published by the Ministry of Housing Communities and Local Government (MHCLG) on 24th July 2018 and updated in July 2021. The NPPF sets out the Government’s planning policies for England and how these should be applied. It provides a framework within which locally prepared plans for development can be produced and assessed. Chapter 16 of the document is concerned with ‘*Conserving and enhancing the historic environment*’. It identifies heritage assets as ‘*an irreplaceable resource*’ and notes that ‘*they should be conserved in a manner appropriate to their significance, so that they can be enjoyed for their contribution to the quality of life of existing and future generations*’ (MHCLG 2021, Para 189).

- 2.3.3 Where designated assets are concerned, great weight should be given to the asset's conservation. The more important the asset the greater that weight should be. Any harm to or loss of significance should require *'clear and convincing justification. Substantial harm to or loss of:*
- *grade II listed building or grade II registered parks or gardens should be exceptional;*
 - *assets of the highest significance, notably scheduled monuments, protected wreck sites, registered battlefields, grade I and II* listed buildings, grade I and II* registered parks and gardens, and World Heritage Sites, should be wholly exceptional.'* (MHCLG 2021, Para 200).
- 2.3.4 With regard to proposals that are predicted to lead to substantial harm to or the total loss of significance to a designated asset, Paragraph 195 states that *'local planning authorities should refuse consent, unless it can be demonstrated that the substantial harm or total loss is necessary to achieve substantial public benefits that outweigh that harm or loss'* (MHCLG 2021, Para 201). Where *'a development proposal will lead to less than substantial harm to the significance of a designated asset'* Paragraph 196 states that *'this harm should be weighed against the public benefits of the proposal including, where appropriate, securing its optimum viable use'* (MHCLG 2021, Para 202).
- 2.3.5 NPPF (MHCLG 2021, Page 71) defines the setting of a heritage asset as the: *"surroundings in which a heritage asset is experienced. Its extent is not fixed and may change as the asset and its surroundings evolve. Elements of a setting may make a positive or negative contribution to the significance of an asset, may affect the ability to appreciate that significance or may be neutral"*.
- 2.3.6 Impacts upon non-designated heritage assets are also a pertinent planning consideration; Paragraph 197 states that *'In weighing applications that directly or indirectly affect non-designated heritage assets, a balanced judgement will be required having regard to the scale of any harm or loss and the significance of the heritage asset'* (MHCLG 2019, Para 203).
- 2.3.7 Where a heritage asset is to be lost, either in part or in whole, as a result of the development, the local planning authority should require developers to *'record and advance understanding of the significance of any heritage assets to be lost (wholly or in part) in a manner proportionate to their importance and the impact, and to make this evidence (and any archive generated) publicly accessible'* (MHCLG 2019, Para 205).

Planning Practice Guidance

- 2.3.8 The MHCLG published Planning Practice Guidance in April 2014, and this was updated in July 2019, to expand upon the NPPF. Section 18a of the guidance is concerned with *'Conserving and Enhancing the Historic Environment'*. The Guidance notes that *'conservation is an active process of maintenance and managing change. It requires a flexible and thoughtful approach to get the best out of assets as diverse as listed buildings to as yet undiscovered, undesignated buried remains of archaeological interest.'*
- 2.3.9 PPG (MHCLG 2019: para 18) requires assessments to assess the harm of a Proposed Development on designated heritage assets in order to understand the impact on the significance of the heritage asset and to clearly state whether that harm is substantial or less than substantial.

Local Planning Policy – London Borough of Richmond upon Thames

- 2.3.10 The London Borough of Richmond upon Thames' planning policy is contained within the London Borough of Richmond upon Thames' Local Plan adopted in July 2018. This supersedes both the Core Strategy which had been adopted in April 2009 and the Development Management Plan which had been adopted in November 2011. The following policies from the Local Plan regarding the Historic Environment are relevant to the proposed development:

2.3.11 'POLICY LP 3' (London Borough of Richmond upon Thames' Local Plan, 2018, 28-29)

Designated Heritage Asset

A. The Council will require development to conserve and, where possible, take opportunities to make a positive contribution to, the historic environment of the borough. Development proposals likely to adversely affect the significance of heritage assets will be assessed against the requirement to seek to avoid harm and the justification for the proposal. The significance (including the settings) of the borough's designated heritage assets, encompassing Conservation Areas, listed buildings, Scheduled Monuments as well as the Registered Historic Parks and Gardens, will be conserved and enhanced by the following means:

- 1. Give great weight to the conservation of the heritage asset when considering the impact of a proposed development on the significance of the asset.*
- 2. Resist the demolition in whole, or in part, of listed building. Consent for demolition of Grade II listed buildings will only be granted in exceptional circumstances and for Grade II* and Grade I listed buildings in wholly exceptional circumstances following a thorough assessment of the justification for the proposal and the significance of the asset.*
- 3. Resist the change of use of listed buildings where their significance would be harmed, particularly where the current use contributes to the character of the surrounding area and to its sense of place.*
- 4. Require the retention and preservation of the original structure, layout, architectural features, materials as well as later features of interest within listed buildings, and resist the removal or modification of features that are both internally and externally of architectural importance or that contribute to the significance of the asset.*
- 5. Demolitions (in whole or in part), alterations, extensions and any other modifications to listed buildings should be based on an accurate understanding of the significance of the heritage asset.*
- 6. Require, where appropriate, the reinstatement of internal and external features of special architectural or historic significance within listed buildings, and the removal of internal and external features that harm the significance of the asset, commensurate with the extent of proposed development.*
- 7. Require the use of appropriate materials and techniques and strongly encourage any works or repairs to a designated heritage asset to be carried out in a correct, scholarly manner by appropriate specialists.*
- 8. Protect and enhance the borough's registered Historic Parks and Gardens by ensuring that proposals do not have an adverse effect on their significance, including their setting and/or views to and from the registered landscape.*
- 9. Protect Scheduled Monuments by ensuring proposals do not have an adverse impact on their significance.*

B. Resist substantial demolition in Conservation Areas and any changes that could harm heritage assets, unless it can be demonstrated that:

- 1. in the case of substantial harm or loss to the significance of the heritage asset, it is necessary to achieve substantial public benefits that outweigh that harm or loss;*
- 2. in the case of less than substantial harm to the significance of the heritage asset, that the public benefits, including securing the optimum viable use, outweigh that harm; or*
- 3. The building or part of the building or structure makes no positive contribution to the character or distinctiveness of the area.*

C. All proposals in Conservation Areas are required to preserve and, where possible, enhance the character or the appearance of the Conservation Area.

D. Where there is evidence of intentional damage or deliberate neglect to a designated heritage asset, its current condition will not be taken into account in the decision-making process.

E. Outline planning applications will not be accepted in Conservation Areas. The Council's Conservation Area Statements, and where available Conservation Area Studies, and/or Management Plans, will be used as a basis for assessing development proposals within, or where it would affect the setting of, Conservation Areas, together with other policy guidance, such as Village Planning Guidance SPDs.

2.3.12 'POLICY LP 4' (London Borough of Richmond upon Thames' Local Plan, 2018, 31)
Non-designated Heritage Asset

The Council will seek to preserve, and where possible enhance, the significance, character and setting of non-designated heritage assets, including Buildings of Townscape Merit, memorials, particularly war memorials, and other local historic features.

There will be a presumption against the demolition of Buildings of Townscape Merit.

2.3.13 'Policy LP 7' (London Borough of Richmond upon Thames' Local Plan, 2018, 35)
Archaeology

The Council will seek to protect, enhance and promote its archaeological heritage (both above and below ground) and will encourage its interpretation and presentation to the public. It will take the necessary measures required to safeguard the archaeological remains found and refuse planning permission where proposals would adversely affect archaeological remains or their setting.

Desk based assessments and, where necessary, archaeological field evaluation will be required before development proposals are determined, where development is proposed on sites of archaeological significance or potential significance.

2.3.14 In addition, the London Borough of Richmond upon Thames' Local Plan contains provisions regarding Buildings of Townscape Merit. Buildings of Townscape Merit are:

'...buildings, groups of buildings or structures of historic or architectural interest, which are locally listed due to their considerable local importance. The Council's adopted SPD on BTMs sets out the criteria that will be taken into account when considering whether a building or structure should be designated as BTM. The policy sets out a presumption against the demolition of BTMs unless structural evidence has been submitted by the applicant, and independently verified at the cost of the applicant. Should demolition prove necessary, a high standard of design that complements the surrounding area will be required in any replacement building. Locally specific guidance on design and character is set out in the Council's Village Planning Guidance SPDs, which applicants are expected to follow for any alterations and extensions to existing BTMs, or for any replacement structures.' (Paragraph 4.4.2).

Applicants will be required to:

1. retain the character of Buildings of Townscape Merit, war memorials and any other non-designated heritage assets;
2. submit a Heritage Statement to assess the potential harm to, or loss of, the significance of the non-designated heritage asset, including from both direct and indirect effects;
3. describe the significance of the non-designated heritage asset affected, including any contribution made by their setting; the extent of the relevant setting will be proportionate to the significance of the asset. Appropriate expertise should be used to assess a non-designated heritage asset; and
4. retain or restore the structures, features and materials of the asset, which contribute to its architectural integrity and historic interest (Paragraph 4.4.4).

2.4 Planning considerations pertaining to the site

2.4.1 The Local Planning Authority are advised on all archaeological matters by the Greater London Archaeological Advisory Service (GLAAS). Any requirement for archaeological work either preceding or during development will be determined by the GLAAS acting as advisors to the London Borough of Richmond upon Thames on archaeological matters.

2.4.2 No Scheduled Monuments are located within The Site. Eleven Listed Buildings are located within the 500m study area with a further two that are located just outside the 500m Study Area. Eight Listed Buildings are of Grade II status, with the exception of three which are of Grade II* status; these include the Parish Church of St Mary (Site 9), the Mausoleum of Sir Richard and Lady Burton in the churchyard of St Mary Magdalen (Site 4) and Limes House and forecourt piers (Site 11).

2.4.3 There are five Conservation Areas within the 500m Study Area. PPG (2019) defines a Conservation Area as:

“an area which has been designated because of its special architectural or historic interest, the character or appearance of which it is desirable to preserve or enhance.”

The Site is not located within a Conservation Area. However, The Queens Lane (Mortlake) Conservation Area 35 (Site 84) borders The Site, covering Mortlake Old Burial Ground and residential areas to the west.

2.4.4 There are three Archaeological Priority Areas (APA) with the 500 m Study Area and a further one that is located just outside the 500 m Study Area. The Site does not lie within an Archaeological Priority Area. However, the Archaeological Priority Area of Mortlake and Barnes covering the historic core of Mortlake and Barnes lies to the north. Its southern boundary lies on North Worple Way to the north west of The Site, bordering on to Mortlake Old Burial Ground and the Queens Lane (Mortlake) Conservation Area 35 but not on to The Site.

2.5 Limitations of Scope

2.5.1 This assessment is based upon data obtained from publicly accessible archives as described in the Data Sources in Section 4.2. All known heritage assets within 500m of The Site were identified. Data from the Greater London Historic Environment Record was obtained in February 2021. The information presented in the gazetteer regarding known heritage assets is current to this date.

- 2.5.2 Visits to view archival material held by Richmond upon Thames Local Studies Library and Archive, were not undertaken due to health and safety constraints associated with Covid-19. Visits to view aerial photography physically held by Historic England (HE) at the National Collection for Aerial Photography in Swindon or by the University of Cambridge were not possible. No aerial photography of the Site is currently held (February 2021) on Britain from Above website. A site visit was not undertaken as part of this assessment. The desk based assessment of the Barnes Hospital Site in 2018 (AOC, 2018) did have access to archive material, including aerial photographs, and a walkover survey was undertaken. Information from the 2018 assessment has, therefore, been re-used to inform this assessment.
- 2.5.3 It should be noted that the report has been prepared under the express instructions and solely for the use of Star Land Realty UK Ltd and associated parties. All the work carried out in this report is based upon AOC Archaeology Group's professional knowledge and understanding of current (July 2021) and relevant United Kingdom standards and codes, technology, and legislation.
- 2.5.4 Changes in these areas may occur in the future and cause changes to the conclusions, advice or recommendations given. AOC Archaeology Group does not accept responsibility for advising Star Land Realty UK Ltd or associated parties of the facts or implications of any such changes in the future.

3 OBJECTIVES

- 3.1 The main objective of this assessment is to identify the cultural heritage value of The Site proposed for development at Barnes Hospital. The evidence presented and the conclusions offered will provide a comprehensive basis for further discussion and decisions regarding heritage constraints on the future development of this site and for the formulation of a further mitigation strategy, should this be required. This will be done by examining a variety of evidence for upstanding and buried remains of heritage interest including World Heritage Sites, Scheduled Monuments, Listed Buildings, Locally Listed Buildings known as Buildings of Townscape Merit, Conservation Areas, Archaeological Priority Areas and non-designated heritage assets within 500m of The Site.

4 METHODOLOGY

4.1 Standards

- 4.1.1 The scope of this assessment meets the requirements of current planning regulations set out in the Planning Practice Guidance (2014, updated July 2019); National Planning Policy Framework (2018, updated July 2021) the Ancient Monuments and Archaeological Areas Act, 1979; Planning (Listed Buildings and Conservation Areas) Act, 1990; and local planning policy.
- 4.1.2 AOC Archaeology Group conforms to the standards of professional conduct outlined in the Chartered Institute for Archaeologists' (CIfA) Code of Conduct, the CIfA Standard and guidance for commissioning work or providing consultancy advice on archaeology and the historic environment, the CIfA Standards and Guidance for Historic Environment Desk Based Assessments, Field Evaluations and other relevant guidance.
- 4.1.3 AOC Archaeology Group is a Registered Organisation of the CIfA. This status ensures that there is regular monitoring and approval by external peers of our internal systems, standards and skills development.

4.1.4 AOC is ISO 9001:2015 accredited, in recognition of the Company's Quality Management System.

4.2 Data sources

4.2.1 The following data sources were consulted during preparation of this desk-based assessment:

- Greater London Historic Environment Record:
For Historic Environment Record data (Report Number 16057);
- National Heritage List for England;
For designated Heritage Asset data;
- Archives and Local Studies Centre – Richmond upon Thames Local Studies Library and Archive
For historic maps and documents relating to; the proposed development site and the surrounding area (could not be accessed in February 2021, archive research from AOC 2018 Barnes Hospital DBA included in this assessment);
- National Map Library (National Library of Scotland, Causewayside, Edinburgh), Promap:
For old Ordnance Survey maps (1st & 2nd Edition, small- and large-scale) and pre-Ordnance Survey historical maps.

4.3 Report structure

- 4.3.1 Each heritage asset referred to in the text is listed in the Gazetteer in Appendix 1. Each has been assigned a 'Site No.' unique to this assessment, and the Gazetteer includes information regarding the type, period, grid reference, HER number, protective designation, and other descriptive information, as derived from the consulted sources.
- 4.3.2 Each heritage asset referred to in the text is plotted on the Figures 2 and 3 at the end of the report, using the assigned Site Nos. The Site is shown outlined in red.
- 4.3.3 All heritage assets located within a 500m radius of The Site have been included in the assessment. The aim of this is to help predict whether any similar hitherto unknown archaeological remains may survive within the proposed development site. Designated heritage assets within 500m of the redline boundary have also been identified to allow for an assessment of the potential for impacts upon their settings.
- 4.3.4 All sources consulted during the assessment, including publications, archived records, photographic and cartographic evidence, are listed amongst the References in Section 8.

5 ARCHAEOLOGICAL AND HISTORICAL EVIDENCE

5.1 Prehistoric and Roman (8000 BC-AD 410)

- 5.1.1 Prehistoric remains are recorded in the 500m Study Area to the north of The Site. These are predominantly located to the north west along Mortlake High Street and to the north east on Charles Street. Sites 27, 18, 73 and 91 at 77-91 Mortlake High Street, 105 Mortlake High Street, 107 Mortlake High Street and 61-69 Mortlake High Street respectively contain a mixture of gullies, a ditch, postholes, stakeholes and pits. Two shallow pits containing a small quantity of burnt flint were present at Site 73 – 107 Mortlake High Street. An archaeological test pit at 27 Charles Street (Site 21) contained a single worked flint of probable prehistoric date. However, it is not known if this find was in-situ or redeposited. Prehistoric findspots include a fragment of a logboat that was found in the Thames before 1920. The findspot of this logboat is to the north of the River Thames at Site 43 and should only be considered as an approximate position. In addition, a Late Bronze Age copper alloy pegged spear head was recovered on the southern bank of the River Thames at Site 17 and a single flint flake (Site 35) was recovered approximately 430m west of The Site. The known prehistoric remains within the study area are thus predominantly located north of The Site, near and associated with the prehistoric course of the River Thames. The Site is located south of the likely prehistoric course of the Thames and therefore the potential for remains of this date to be present on The Site is considered to be Low.
- 5.1.3 There are no remains from the Roman period recorded within The Site or the 500m Study Area. However, the presence of prehistoric activity and activity from the Saxon period close to the River Thames and the historic core of Mortlake, Mortlake High Street means that the possibility of Roman remains cannot be discounted. Therefore, there is a Low potential for archaeological remains of the Roman period to be present on The Site.

5.3 Early Historic and Medieval (AD 410-1600)

- 5.3.1 Few finds of an early historic nature have been discovered in the Study Area, the exception being a Saxon iron lance found at Site 34 in 1918. Mortlake and Barnes to its east are Conservation Areas (Site 83 and 82 respectively). Both settlements were recorded in the Domesday Survey in 1086 and Mortlake was recorded as the fourth largest village in Surrey.
- 5.2.2 Archaeological investigations have uncovered the remains of medieval and post medieval buildings within the historic urban core of Mortlake including revetment along the River Thames. These include possible dumps of medieval and post medieval deposits thought to represent levelling and revetment along the Thames at 105 Mortlake High Street (Site 19). The remains of buildings thought to date to from the 15th to the 17th centuries were located at Site 30 and 32 along Mortlake High Street in Mortlake's historic core. The remains of garden features, including wall and a pond, as well as garden soils thought to date from the 16th to 17th centuries were located at Site 91 along Mortlake High Street. Further east archaeological investigations along Charles Street (Sites 22 and 23) respectively revealing a well and a pit of 19th century date indicate that this area, to the north east of The Site was primarily developed a little later than the historic core of Mortlake.
- 5.2.3 The Grade II* Listed Parish Church of St Mary (Site 9) was initially founded in 1348, with the present church on the site dating to 1543. This Church was enlarged in the 18th century and modified throughout the 19th and 20th centuries whilst retaining elements of its 16th century tower. A full description of this asset can be found in Appendix 1: Site Gazetteer.

5.2.4 The location of these archaeological remains along the foreshore and historic core of Mortlake, particularly Mortlake High Street matches up to the early pre-Ordnance Survey maps indicating that the majority of the early historic and medieval activity is located north of The Site towards the river. However, these results may be due to a lack of archaeological investigations close to The Site, with recent development work having been undertaken within Mortlake's historic core. The possibility of archaeology of an early historic and medieval date on The Site cannot be discounted and therefore its potential to be present on The Site is considered to be Low.

5.4 Post-medieval (AD 410-1900)

5.4.1 Early pre-Ordnance Survey maps of The Site, such as Blaeu's map of 1646 tend to be schematic and lack detail. Rocque's map of 1754 (Figure 4) appears to show a field under cultivation. A path is clearly shown heading north west from Priests Bridge. Saunders map of 1847 shows the line of the proposed London and South Western Railway which follows its constructed course. However, this map does not show any details of The Site.

5.4.2 The first map to show the area in any detail is the OS Map of 1870 (Figure 5). This shows The Site as part of a larger field, semi-enclosed on its southern side. A footpath runs across The Site from its south east corner to just below its north west corner. This is probably the same path visible on Rocque's map of 1754 heading north west from Priests Bridge. The London and South Western Railway are already shown as bordering The Site to the north with Mortlake Cemetery bordering The Site on its western boundary. Mortlake Cemetery is annotated as Old Mortlake Burial Ground.

5.4.3 Mortlake Cemetery (Site 47) was established in 1854 using land purchased for the parish through subscription. The OS Map of 1897 (Figure 6) shows that Mortlake Cemetery was extended further to the west to its current western limit at Lodge Avenue acquiring an entrance lodge on its new south west corner. This lodge building is still present at this location at the modern entrance to Old Mortlake Burial Ground at the north end of Avenue Gardens.

5.4.4 In 1887 the Rural Sanitary Authority for Richmond Union purchased land for a Mortuary and the construction of an Isolation Hospital. The proposed construction of the hospital faced considerable opposition from the Mortlake public and it required a Public Inquiry before permission was granted. This facility would become Barnes Hospital (Site 46) and opened in 1888. On Creation of the Borough of Richmond in 1892 it was agreed that people from the "Old parish" of Mortlake could be admitted to the Isolation Hospital. The hospital became the property of the Local District Board of Barnes & Mortlake in 1892 and the Urban District Council of Barnes from 1898.

5.4.5 Barnes Hospital (Site 46) was initially only developed in the western half of its current boundaries, bordering onto the eastern boundary of Old Mortlake Burial Ground (Site 47), The hospital is shown on the OS map of 1897 as consisting of a fever or isolation hospital, three buildings to the north of the main building and a mortuary in the north east corner.

5.4.6 Twelve Listed Buildings are present within the Study Area, which have their foundations in the post-medieval period between the late 17th and 19th centuries. Full descriptions of these assets can be found in Appendix 1: Site Gazetteer.

5.4.7 Despite the development of Mortlake and Barnes in the post-medieval period and the introduction of the railway, The Site seems to have remained as agricultural fields during this period until the construction of Barnes Hospital in 1888. The post-medieval activity recorded within the Study Area means the likelihood of archaeology dating to this period being uncovered cannot be discounted. Therefore, the potential for remains relating to this period prior to the construction of Barnes Hospital in 1888 to survive on The Site is considered to be Low. However, with the construction of the hospital the potential for archaeological remains post 1888 can be considered to be Medium to High.

5.5 Modern (AD post 1900)

5.5.1 The OS maps from 1870 onwards continue to show the development of Barnes Hospital. By the time of the OS map of 1913 (Figure 7) Barnes Hospital had been extended to fill out the whole of its footprint, the current modern limits of The Site. New buildings and footpaths are shown to have been added to the eastern extension of Barnes Hospital including a Lodge facing onto South Worple Way and another Mortuary in the north east corner of The Site. More facilities were added by 1935 and the Mortuary is shown to have been moved to one smaller building to the east of the entrance Lodge. In 1948 the hospital joined the new National Health Service and became known by its modern name of Barnes Hospital in 1949-50.

5.5.2 The path visible on Rocque's map of 1754 still crossed the developing Barnes Hospital site as shown on the OS map of 1897. However, by the time of the OS map of 1913 it seems that this path had been diverted to run south to north outside the eastern boundary of Barnes Hospital. This path continues to be in use and is known today as South Worple Avenue.

6 WALKOVER SURVEY

6.1 The Site was not visited as part of this desk-based assessment as the ground conditions are the same as they were in 2018. The results of the walk-over survey undertaken as part of the 2018 desk based assessment by AOC (AOC, 2018) have been reproduced within this report.

6.2 The Site and the Study Area were visited on the 4th October 2017 in dry, dull weather as part of a prior assessment for the entire Barnes Hospital Site. The Site comprises existing buildings of Barnes Hospital and car parking areas (Plates 1 to 4), it is proposed that these buildings will be demolished under the current development plans.

6.3 No archaeological remains, features or artefacts were identified within The Site during the walkover survey

7 CONCLUSION

7.1 Direct impacts

7.1.1 Potential impacts on known or unknown buried archaeological remains which may survive within the proposed development site relate to the possibility of disturbing, removing or destroying in situ remains and artefacts during demolition and groundbreaking works (including excavation, construction, and other works) associated with the proposed development.

7.1.2 The assessment has established that there is little evidence for activity pre-dating the medieval period within the vicinity of The Site. Whether this is due to a lack of intrusive investigations in the area producing evidence, or a true reflection of the potential of the area, is unknown. However, based on current evidence, potential for archaeological remains dating up to the medieval period to survive on The Site is considered Low. The potential for archaeological remains dating from the medieval to post-medieval periods to survive is considered be Low. The potential for archaeological remains relating to the modern period, particularly the historical development of The Site as Barnes Hospital from 1888 is Medium to High.

7.1.3 Five of the buildings of Barnes Hospital (Site 46) are listed as Buildings of Townscape Merit;

- Recreation Hall which will be retained and refurbished within current proposal,
- Entrance Lodge which will be retained and refurbished within current proposal,
- Administration Building which will be demolished within current proposal,
- Laundry which will be demolished within current proposal,
- Elizabeth Lodge which will be demolished within current proposal.

These five locally listed Buildings of Townscape Merit date to the late 19th and early 20th centuries and showcase the brick-built architecture of hospital buildings at this time (Plates 5 and 6), particularly within the local area of Mortlake. The impacts upon the setting and cultural value of the locally listed Buildings of Townscape Merit within The Site are addressed in full in the Heritage and Townscape Statement prepared by Montagu Evans that forms part of this application and, as such, are not assessed further here.

7.2 Mitigation

7.2.1 National planning policies and planning guidance contained within the National Planning Policy Framework (MHCLG 2018, updated 2021) and its accompanying Planning Practice Guidance (DCLG 2014, updated 2019), as well as local planning policies contained within the London Borough of Richmond upon Thames' Local Plan (2018) outlined in Section 2.4 of this report, require a mitigation response that is designed to take cognisance of the possible impacts upon heritage assets by a proposed development and avoid, minimise or offset any such impacts as appropriate.

7.2.2 The assessment has established that The Site has likely been part of the agricultural landscape to the south of Mortlake until the construction of Barnes Hospital. Little activity from prehistory up until the medieval period has been recorded within the vicinity of the Site. However, the potential for discovering hitherto unknown archaeological remains within the Site cannot be discounted. Overall, there is considered to be a Low potential for remains of prehistoric to Roman date to be present, a Low potential for remains of Early Historic and medieval periods and a Low potential for remains of post-medieval date.

- 7.2.3 Depending on the depth of the archaeological horizon, ground works within the Site, could be considered to have the potential to highly impact any buried archaeological deposits that may be present. In accordance with national and local planning policies on heritage, it is advised that prior to development, the London Borough of Richmond upon Thames as advised by the Greater London Archaeological Advisory Service (GLAAS), may require an archaeological investigation to enable the identification, assessment and recording of any surviving remains in advance of development at The Site. The current buildings and facilities of Barnes Hospital on the Site limit the potential for any geophysical survey; the foundation remains of previous buildings predominantly lie below the current footprints of the existing buildings. Given the nature of the proposed works, which entails the demolition of existing buildings of Barnes Hospital and the Medium to High potential for remains of buildings dating to the foundation of Barnes Hospital in 1888 and its development it is possible that any such works could reasonably be restricted to a watching brief on the grubbing up of the foundations to establish the potential for archaeological remains within the Site. Dependent upon the results of the watching brief further mitigation, such as targeted trial trenching could be required to further investigate potential remains. Any such requirement will be determined by the Greater London Archaeological Advisory Service (GLAAS).
- 7.2.4 Five of the Barnes Hospital buildings within The Site are locally listed of Buildings of Townscape Merit. Three of the five Buildings of Townscape Merit within Barnes Hospital will be demolished under the current development proposal and the principle of their removal was agreed through planning permission ref. 18/3642/OUT. Although normal development rights are not affected by the Buildings of Townscape Merit status the London Borough of Richmond upon Thames has a presumption against the demolition of Buildings of Townscape Merit. The Council policy is to only grant consent where it is assured that retention and adaption is not possible and where the proposed replacement is consistent with other policies and exhibits a high standard of design that would complement the surrounding area. Any impacts upon the setting and cultural value of the locally listed Buildings of Townscape Merit within The Site are addressed in full in the Heritage and Townscape Statement prepared by Montagu Evans that forms part of this application and, as such, are not assessed further here.

8 REFERENCES

8.1 Bibliographic References

Ancient Monuments and Archaeological Areas Act, 1979 (c46). [Online]. London. The Stationery Office. Available at: http://www.legislation.gov.uk/ukpga/1979/46/pdfs/ukpga_19790046_en.pdf

AOC. 2018. *Barnes Hospital, Richmond Archaeological Desk Based Assessment*. Available at: <https://images.richmond.gov.uk/iam/IAMCache/2755341/2755341.pdf>

BGS. 2021, Geology of Britain Viewer. Available: <https://www.bgs.ac.uk/map-viewers/geology-of-britain-viewer/> [Accessed 22 February 2021].

CifA 2020, Standard and guidance for historic environment desk-based assessment, The Chartered Institute for Archaeologists. Available at: https://www.archaeologists.net/sites/default/files/CifAS%26GDBA_4.pdf

Historic England (HE). (2017). *The Setting of Heritage Assets- Historic Environment Good Practice Advice in Planning Note 3 (Second Edition)*. Available at: <https://historicengland.org.uk/images-books/publications/gpa3-setting-of-heritage-assets/> (Accessed 22/02/2021)

London Borough of Richmond upon Thames, Buildings of Townscape Merit Register. Available at: https://www.richmond.gov.uk/media/18606/btm_register.pdf (Accessed 22 February 2021)

London Borough of Richmond upon Thames, Supplementary Planning Document: Buildings of Townscape Merit (Adopted May 2015). Available at: http://www.richmond.gov.uk/media/7621/buildings_of_townscape_merit_spd.pdf (Accessed 22 February 2021)

London Borough of Richmond upon Thames, Local Plan (Adopted July 2018) Available at: https://www.richmond.gov.uk/media/15935/adopted_local_plan_interim.pdf (Accessed 22 February 2021)

MHCLG 2021 National Planning Policy Framework
(<https://www.gov.uk/government/publications/national-planning-policy-framework--2>)

MHCLG 2014 National Planning Practice Guide (Updated 2019)
(<http://planningguidance.planningportal.gov.uk/blog/guidance/>)

Montagu Evans. 2018. *Heritage Statement Land at Barnes Hospital, South Worple Way, Barnes, Richmond, London, SW16 8SU*. Available at: <https://images.richmond.gov.uk/iam/IAMCache/2755350/2755350.pdf>

Planning (Listed Buildings and Conservation Areas) Act, 1990. [Online]. London. HMSO. Available at: <http://www.legislation.gov.uk/ukpga/1990/9/contents>

8.2 Cartographic References

The following maps were consulted through National Library of Scotland Website (<http://maps.nls.uk>) and (<http://www.oldmapsonline.org/>) – last accessed 22/02/21. Maps reproduced for figures were acquired from Promap (<https://www.promap.co.uk/>):

Blaeu, J. 1646, *Surria vernacule Surrey*

Rocque, J. 1754. *Carte topogrpahique de le comte de Middlesex 3*

Saunders. T 1847 *London and its environs*

Stanley, W.1804. Detail from OSD 127 (Hampton Court) showing Kingston, Richmond and Twickenham

Ordnance Survey. 1870. London (First Editions c1850s) LXII (includes: Barnes; Mortlake; Wandsworth Borough)
Surveyed: 1867 Published: 1870

Ordnance Survey. 1897. London (Edition of 1894-96) XCVIII (includes: Barnes; Mortlake; Wandsworth Borough)
Revised: 1891 to 1893 Published: 1897

Ordnance Survey. 1913. Surrey II.13 (includes: Barnes; Chiswick St Nicholas; Mortlake) Revised: 1910 Published: 1913

Ordnance Survey. 1919. London (1915- Numbered sheets) VIII.6 (includes: Barnes; Mortlake; Wandsworth Borough) Revised: 1913 Published: 1919

Ordnance Survey. 1935. Surrey II.13 (includes: Barnes; Chiswick St Nicholas; Mortlake) Revised: 1933 Published: 1935

Ordnance Survey. 1947. Surrey II.13 (includes: Barnes; Chiswick St Nicholas; Mortlake) Revised: 1940 Published: 1947

Ordnance Survey. 1952. TQ2175NW - A (includes: Barnes; Mortlake; Wandsworth Borough) Surveyed: 1951
Published: 1952

Ordnance Survey. 1952. TQ2075NW - A (includes: Mortlake) Surveyed: 1951 Published: 1952

8.3 Archive references

8.3.1 The following archives were consulted at the Richmond upon Thames Local Studies Library and Archive on 4th October 2017:

Plan of Proposed Lines of Road from Hammersmith through Barnes to Road from Richmond 1825 (LM0159R D2-27)

Mortlake c1860, Mortlake One Hundred Years Ago Plan Drawn c1960 (LM0146R D3-13)

Mortlake Hospital Notes

Richmond Manor Copyhold Properties 1842 (LM0064R)

Rocque, J 1741-5 *Map of Barnes and Mortlake, Sheet 2* (LM003R D1)

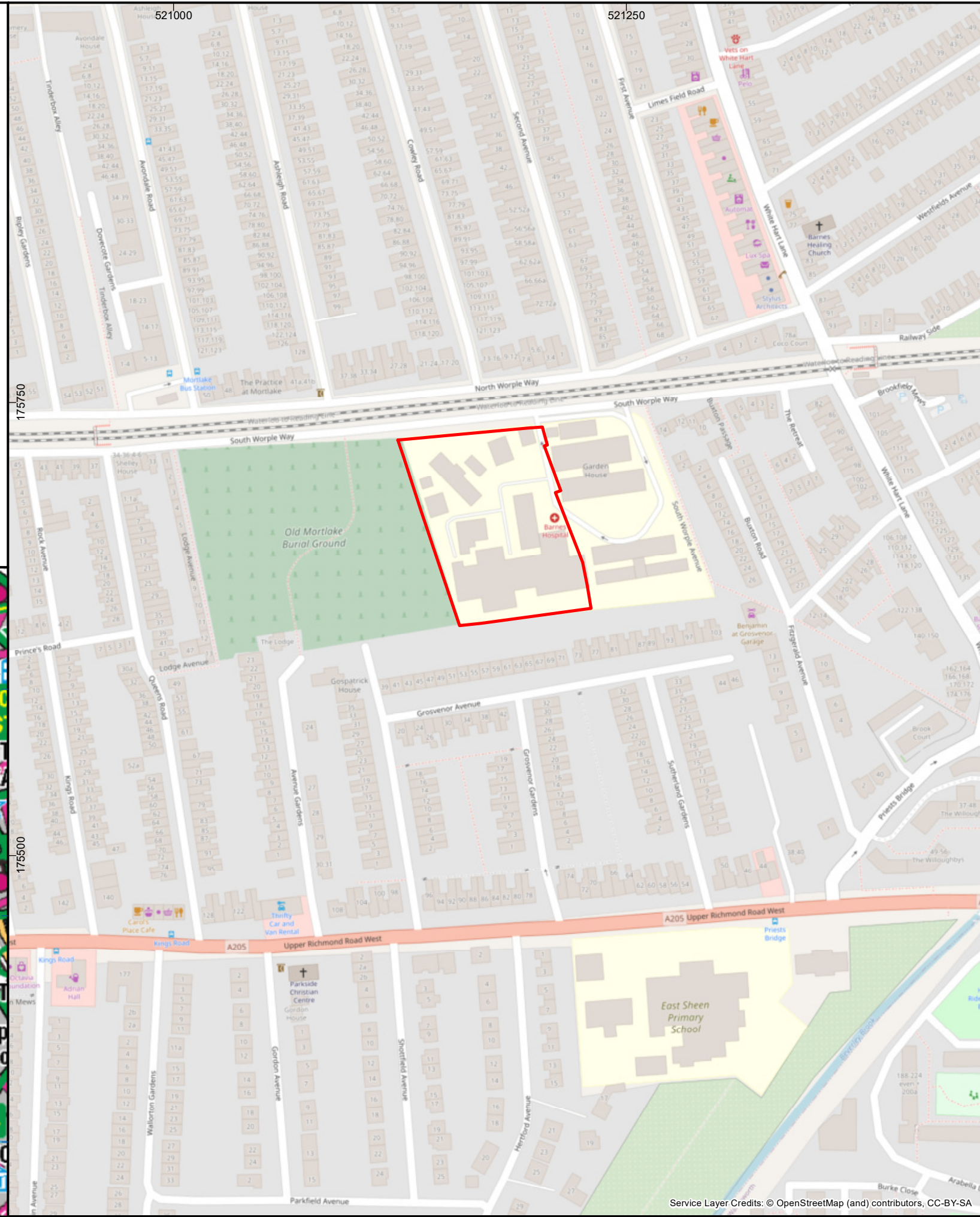
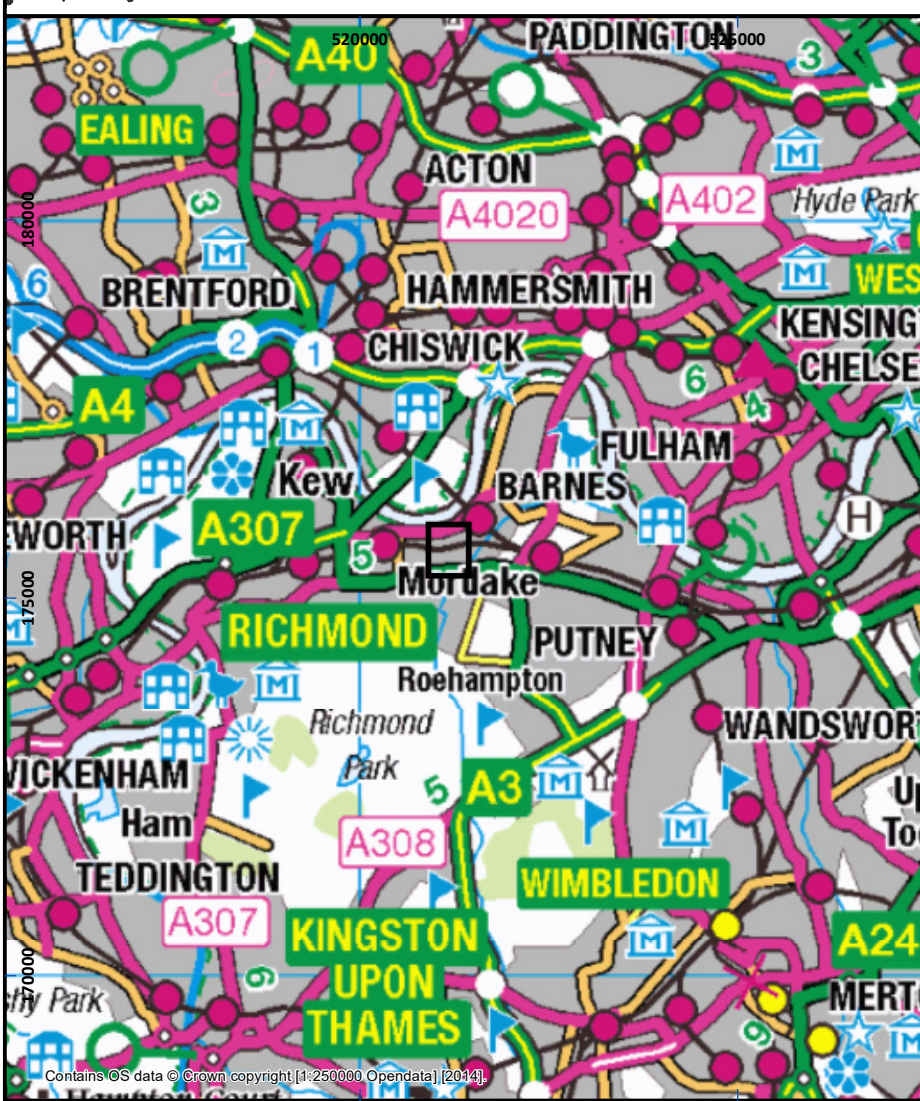
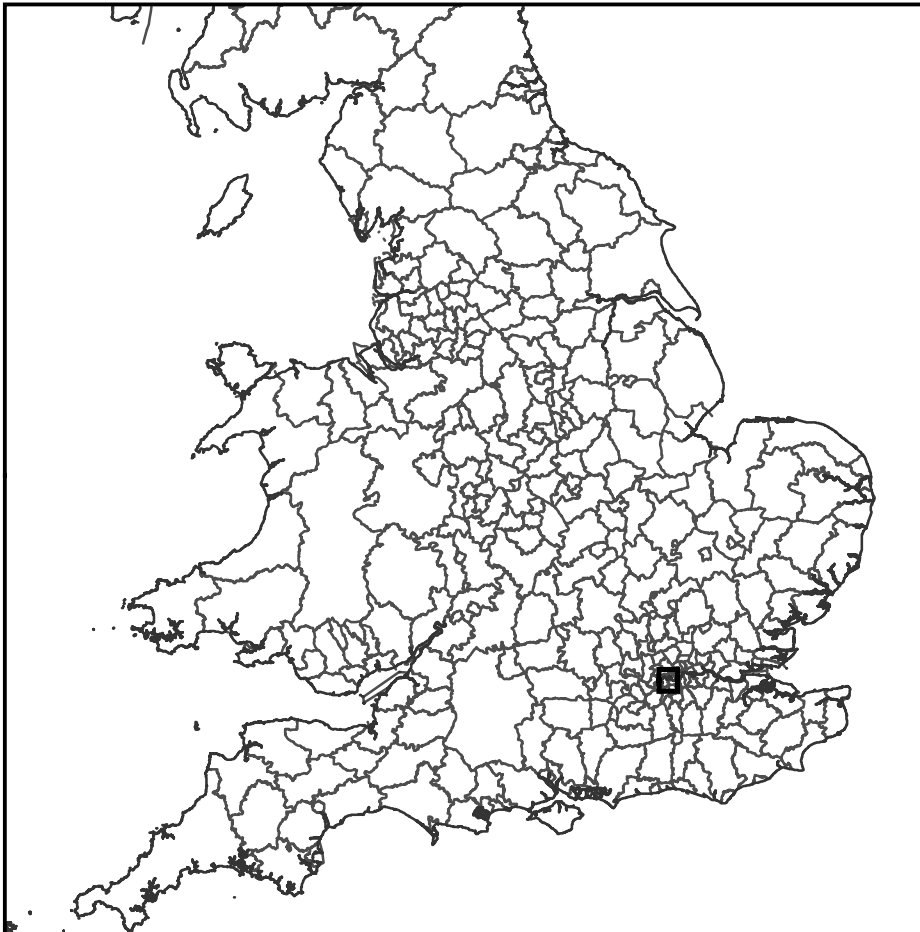
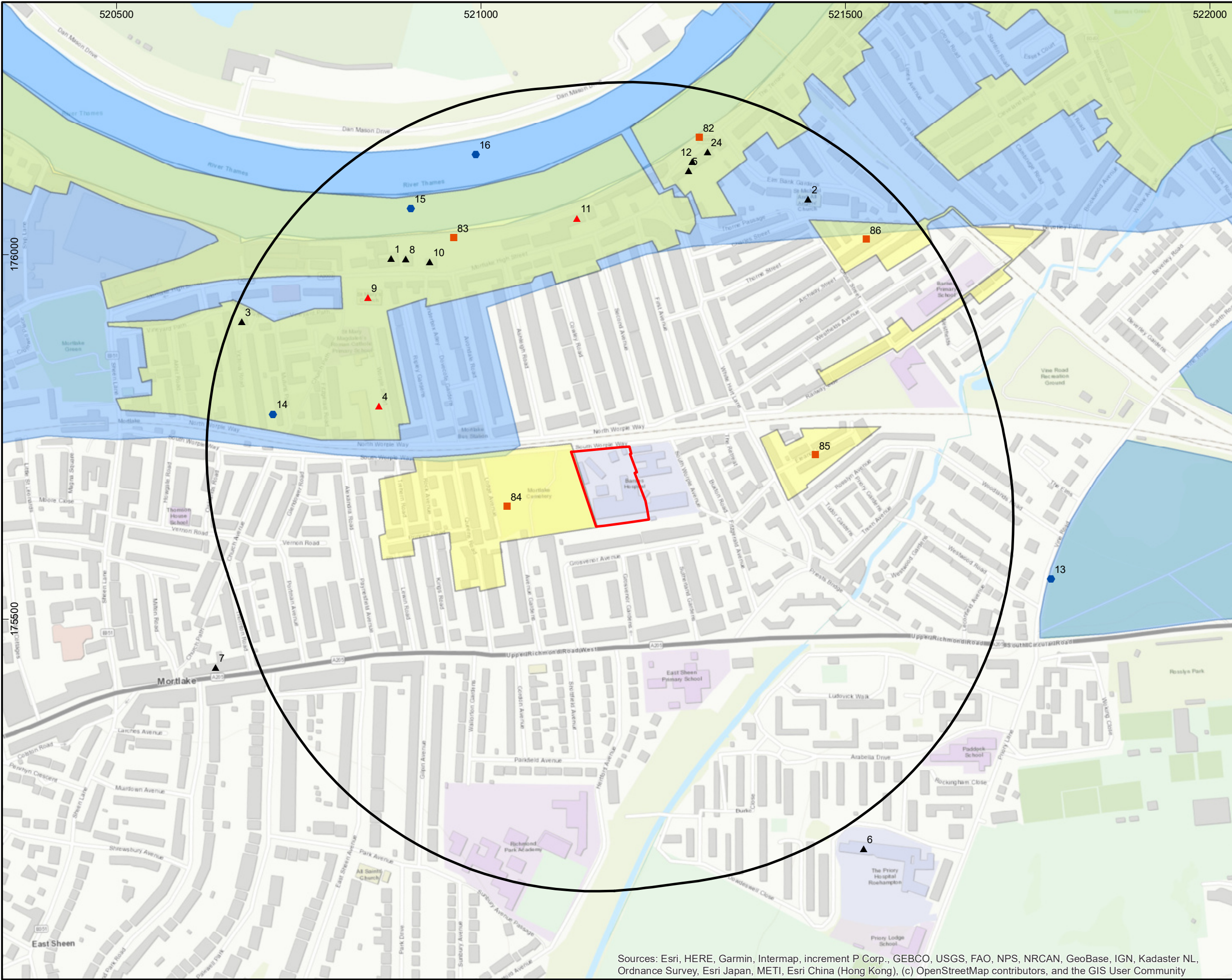


Figure	1
Site Location Plan	
Legend Site Boundary	
FOR	
Avison Young 65 Gresham Street London EC2V 7NQ	
Drawn/checked:	GM/SO
DWG no:	01/24064/DBA/01/02
AOC Project No.:	24064
 (C) AOC Archaeology Group 2021	
SYSTEM Coordinate System: British National Grid Projection: Transverse Mercator Datum: OSGB 1936	
SCALE 1:2,500 @ A3	
Service Layer Credits: © OpenStreetMap (and) contributors, CC-BY-SA	



Designated Heritage Assets within the 500m Study Area

- Legend
- Proposed Development Site
 - 500m Study Area
 - ▲ Grade: II* Listed Building
 - ▲ Grade: II Listed Building
 - Conservation Area
 - Conservation Area
 - GLHER APA Polygon
 - Archaeological Priority Area

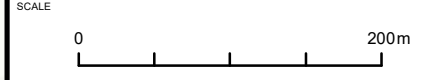
FOR
 Avison Young
 65 Gresham Street
 London
 EC2V 7NQ

Drawn/checked:	GM/SO
DWG no:	01/24064/DBA/02/02
AOC Project No.:	24064

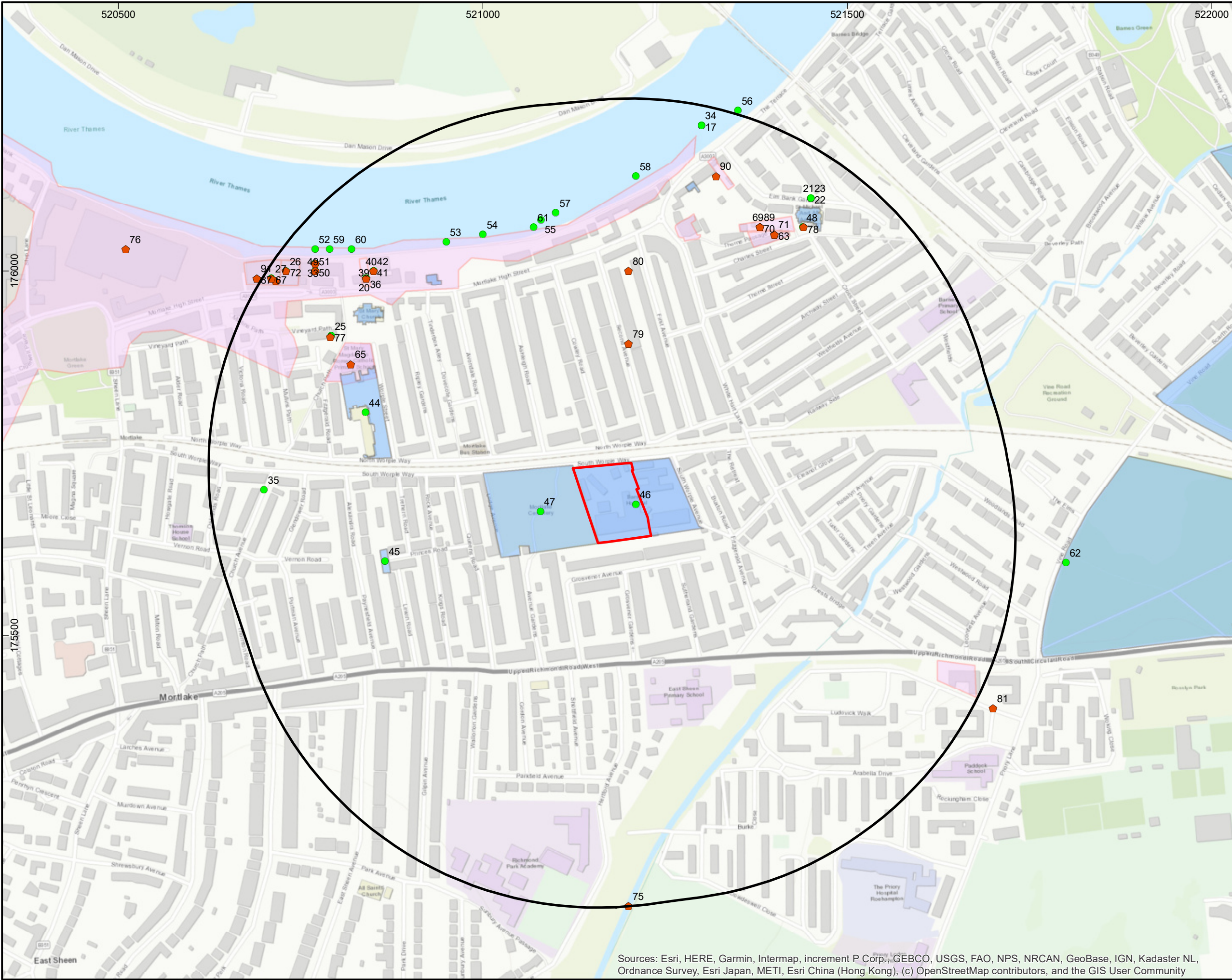


SYSTEM
 Coordinate System: British National Grid
 Projection: Transverse Mercator
 Datum: OSGB 1936

SCALE 1:5,000 @ A3



Sources: Esri, HERE, Garmin, Intermap, increment P Corp., GEBCO, USGS, FAO, NPS, NRCAN, GeoBase, IGN, Kadaster NL, Ordnance Survey, Esri Japan, METI, Esri China (Hong Kong), (c) OpenStreetMap contributors, and the GIS User Community



Non Designated Heritage Assets within the 500m Study Area

- Legend
- Proposed Development Site
 - 500m Study Area
 - Non-designated Heritage Asset
 - ◆ Event
 - GLHER Monument Polygon
 - GLHER Event Polygon

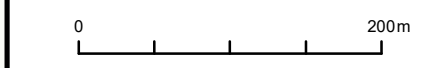
FOR
Avion Young
65 Gresham Street
London
EC2V 7NQ

Drawn/checked:	GM/SO
DWG no:	01/24064/DBA/03/02
AOC Project No.:	24064




SYSTEM
Coordinate System: British National Grid
Projection: Transverse Mercator
Datum: OSGB 1936

SCALE
1:5,000 @ A3



Sources: Esri, HERE, Garmin, Intermap, increment P Corp., GEBCO, USGS, FAO, NPS, NRCAN, GeoBase, IGN, Kadaster NL, Ordnance Survey, Esri Japan, METI, Esri China (Hong Kong), (c) OpenStreetMap contributors, and the GIS User Community

Extract from Rocque, 1754

Legend
 Approximate Site Location



FOR
Avison Young
65 Gresham Street
London
EC2V 7NQ

Drawn/checked:	GM/SO
DWG no:	01/24064/DBA/04/02
AOC Project No.:	24064



SYSTEM
Coordinate System: British National Grid
Projection: Transverse Mercator
Datum: OSGB 1936

SCALE
NOT TO SCALE

521000

521500

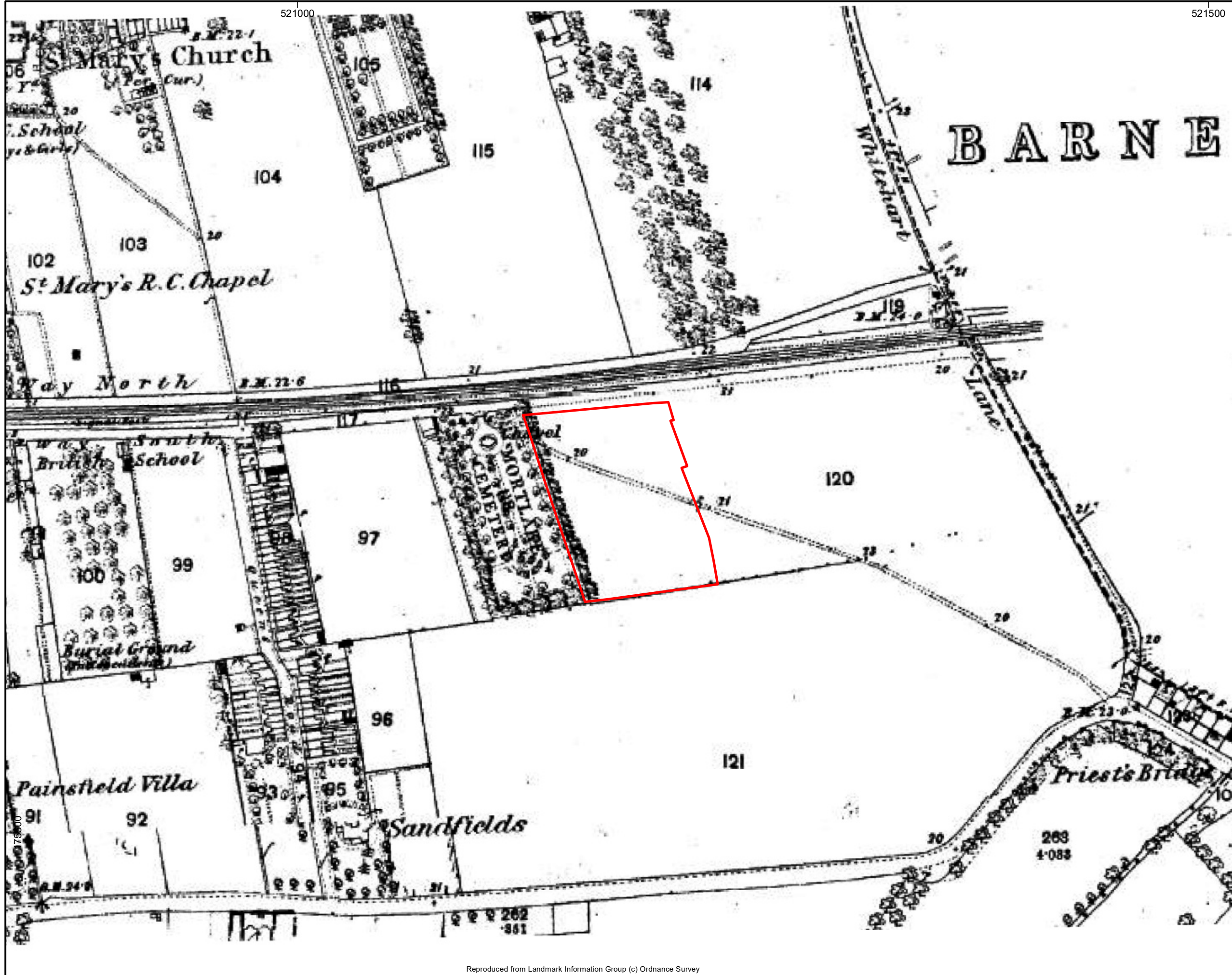


Figure 5

Extract from Ordnance Survey, 1870

Legend
 Proposed Development Site

FOR

Avison Young
 65 Gresham Street
 London
 EC2V 7NQ

Drawn/checked:	GM/SO
DWG no:	01/24064/DBA/05/02
AOC Project No.:	24064



(C) AOC Archaeology Group 2021



SYSTEM
 Coordinate System: British National Grid
 Projection: Transverse Mercator
 Datum: OSGB 1936

SCALE 1:2,000 @ A3



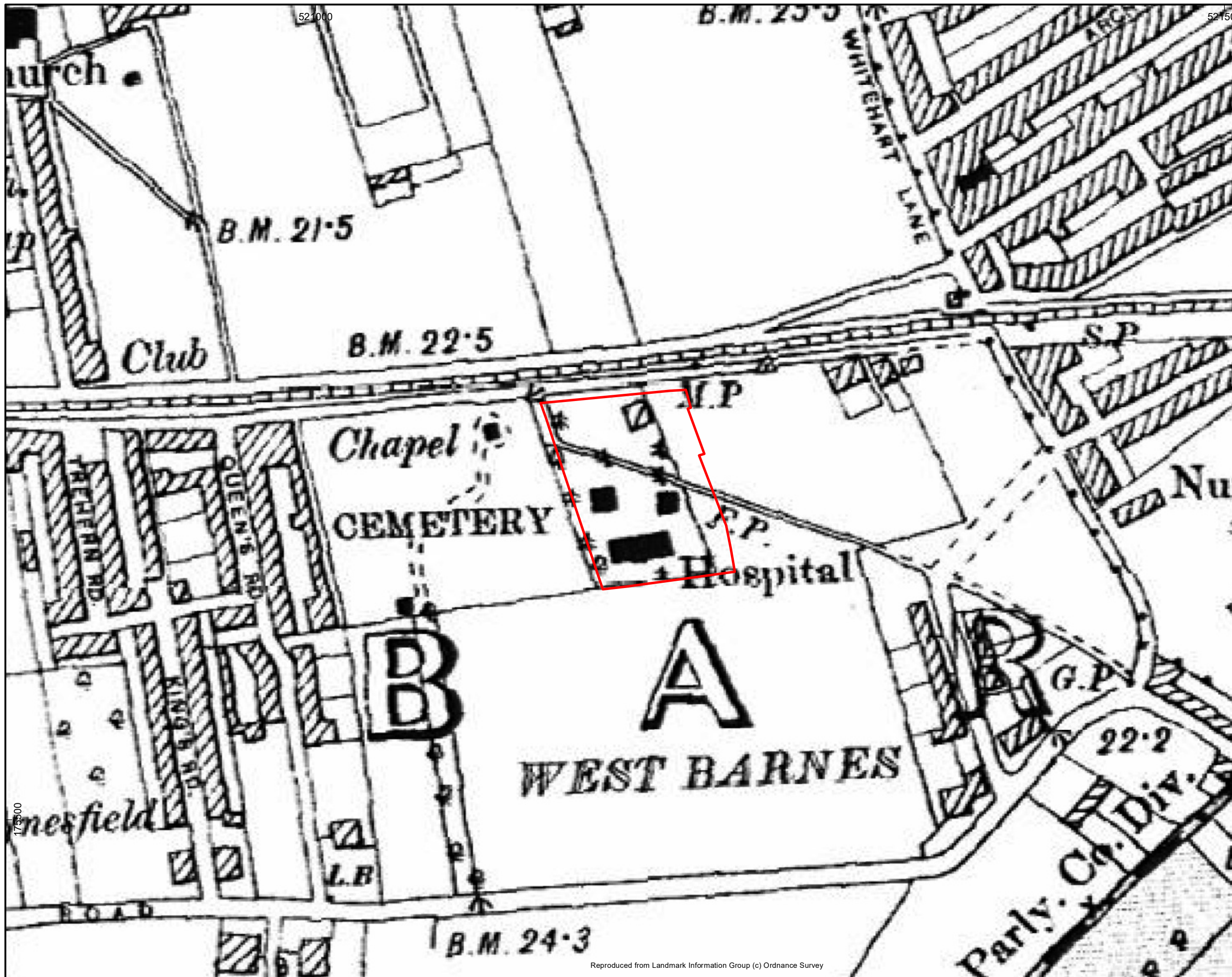


Figure 6

Extract from Ordnance Survey, 1897

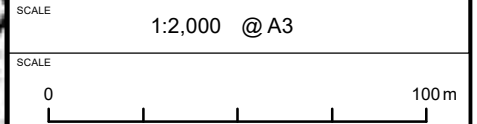
Legend
 Proposed Development Site

FOR
 Avison Young
 65 Gresham Street
 London
 EC2V 7NQ

Drawn/checked:	GM/SO
DWG no:	01/24064/DBA/06/02
AOC Project No.:	24064



SYSTEM
 Coordinate System: British National Grid
 Projection: Transverse Mercator
 Datum: OSGB 1936





Figure

7

Extract from Ordnance Survey, 1913

Legend

Proposed Development Site

FOR

Avison Young
65 Gresham Street
London
EC2V 7NQ

Drawn/checked:	GM/SO
DWG no:	01/24064/DBA/07/02
AOC Project No.:	24064



(C) AOC Archaeology Group 2021



SYSTEM
Coordinate System: British National Grid
Projection: Transverse Mercator
Datum: OSGB 1936

SCALE
1:2,000 @ A3





Plate 1: View north to Old Mortlake Burial Ground Lodge and Southern Entrance



Plate 2: View east from Old Mortlake Burial Ground to Barnes Hospital, The Site



Plate 3: View south east from North Worple Way to Barnes Hospital, The Site



Plate 4: View south from North Worple Way to Barnes Hospital, The Site



Plate 5: View east of Enid Balint Centre - 1904 building, Barnes Hospital



Plate 6: View south west of 1930s building, Barnes Hospital

Barnes Hospital, Richmond
Desk Based Assessment

Appendix 1: Site Gazetteer

Site Number	1
Site Name	ACACIA HOUSE
Type of Site	Listed Building (Post-medieval)
Listing No./NRHE Number	1065426
HER Number	MLO91038; DLO26035
Status	Grade: II Listed Building
Easting	520877
Northing	175995
Council	London Borough of Richmond
Description	1065426

1. 5028 HIGH STREET (north side) Mortlake, SW14

No 115 (Acacia House) TQ 2076 12/6 26.10.51 TQ 2075 13/6

II GV

2. Late C18, 3-storey house. Four windows wide. Brown brick with red brick window heads. Door, approached with flight of steps, has wood doorcase with console-bracketed cornice hood. Interior not seen.

Listing NGR: TQ2087775995

Site Number	2
Site Name	CHURCH OF ST MICHAEL AND ALL ANGELS
Type of Site	Listed Building (Post-medieval; Modern)
Listing No./NRHE Number	1389297
HER Number	MLO91680; DLO26589
Status	Grade: II Listed Building
Easting	521449
Northing	176076
Council	London Borough of Richmond
Description	1389297

TQ 2176 ELM BANK GARDENS 22/12/10136 Barnes 29-SEP-00 Church of St Michael and All Angels

II

Parish church. Built 1891-3 by Charles Innes. North west vestry added in 1936 in matching style. Built of red brick in English bond with stone dressings and tiled roof. Basilical plan. Nave and chancel in one with aisles and clerestorey, apsidal-ended baptistery at west end, apsidal-ended east end and apsidal-ended Lady Chapel to north east. Windows are mainly lancets, paired to aisles and clerestorey and with buttresses to aisles separating each pair. Lady Chapel has paired gables separated by brick and stone buttresses with triple lancets within giant

arches. Plain arched north entrance. Main entrance through south porch with arched entrance, benches and wrought iron gates. South side also has gabled sacristy with triple lancet window and corner turret with conical roof. 1936 north west vestry also of red brick in English bond with paired lancets, arched doorcase and flat roof. INTERIOR: Six bay arcade with circular piers with foliate capitals. Wooden roof of arch-braced type with pendants supported on thin colonnettes. Baptistry has circular stone font and encaustic tiles. Original wooden pews. Square arched wooden pulpit. Brass lectern on wooden base. Lady Chapel has wrought iron gates, encaustic tiles and brass screen. Chancel has low stone wall with wrought iron gates and original choir stalls. Organ loft has paired arches on circular pier and wrought iron screen above with two statues of angels. Sanctuary has fine wooden altar table with paintings of seven saints and a marble reredos. Good contemporary stained glass throughout, mainly of saints but Lady Chapel has scenes from the life of the Virgin Mary, artist not known at time of inspection.

[Pevsner BOE. LONDON: SOUTH p469.]

Selected Sources

Books and journals

Bridget, C, Pevsner, N, The Buildings of England: London 2: South, (1994), 469

National Grid Reference: TQ 21449 76076

Site Number	3
Site Name	44 AND 46, VICTORIA ROAD
Type of Site	Listed Building (Post-medieval)
Listing No./NRHE Number	1253022
HER Number	MLO91280; DLO26277
Status	Grade: II Listed Building
Easting	520672
Northing	175908
Council	London Borough of Richmond
Description	1253022

1. 5028VICTORIA ROAD

Nos 44 and 46 TQ 2075 13/8

II

2. Probably 1870s. Pair of cottages. In situ mass concrete, using method resembling that of Joseph Tall, pioneer of concrete shuttering. Stuccoed. Original flat concrete roof to parapet. Each 2 storeys, 2 windows wide. The outer bay of each cottage recessed with entrance. Advanced bay of each cottage has corniced polygonal bow window. Square headed windows and doors with stucco keystones and moulded architraves to upper windows. Sash windows with original glazing bars. Cornice to parapet. Internally concrete floors and stairs. Shallow segmental barrel to entrance ceiling. ""Concrete"" December 1977.

Listing NGR: TQ2067275908

Site Number	4
--------------------	---

Site Name	MAUSOLEUM OF SIR RICHARD AND LADY BURTON, CHURCHYARD OF ST MARY MAGDALEN
Type of Site	Listed Building (Post-medieval)
Listing No./NRHE Number	1065392
HER Number	MLO91018
Status	Grade: II* Listed Building
Easting	520860
Northing	175792
Council	London Borough of Richmond
Description	1065392

22/13/4 NORTH WORPLE WAY 30-OCT-73 Mortlake Mausoleum of Sir Richard and Lady Burton, churchyard of the Roman Catholic St Mary Magdalen (Formerly listed as: NORTH WORPLE WAY Mortlake Mausoleum of Sir Richard and Lady Burton, churchyard of St Mary Magdalen) (Formerly listed as: NORTH WORPLE WAY SW14 Mortlake Mausoleum of Sir Richard Burton in the churchyard of Church of St Mary Magdalen)

II* Mausoleum. C1890. Mausoleum in the shape of a Bedouin tent made of Carrara marble and Forest of Dean stone, 12 feet square and 18 feet high. The roof has a gilt tailed 9 point star, the pediment was enriched with stars and crescents, and the rear originally had a stained glass panel showing the Burton monogram, now replaced in clear glass. Entrance, now blocked, has a crucifix above. Door has inscription "To Sir Richard Francis Burton 1821-1890 and Isabel d.1896". Beneath is a poem by Justin Huntly McCarthy. Interior, visible through rear glass panel contains above ground ornate tapering coffin with extensive gilt enrichment for Sir Richard Burton, with crucifix and camel bells. There is a more conventional mahogany coffin for Lady Burton. Painted roof representing the heavens with stars and seraphim and strings of camel bells. Shrine to rear wall and religious paintings of Christ with Magdalene and Crucifixion to sides and Arabic lamps on floor. This burial was a response to Sir Richard Burton's horror of darkness. An extraordinary mixture of chapel ardente and Bedouin tent.

Site Number	5
Site Name	31, THE TERRACE SW13
Type of Site	Listed Building (Post-medieval)
Listing No./NRHE Number	1262068
HER Number	MLO91395; DLO26392; DLO26252
Status	Grade: II Listed Building
Easting	521285
Northing	176115
Council	London Borough of Richmond
Description	1262068

Legacy Record - This information may be included in the List Entry Details.

1. 5028 THE TERRACE Barnes, SW13

No 31 TQ 2176 12/7 25.10.51

II GV

2. C18, 3-storey house, brick, 6 windows wide with parapet. Entrance door in the fourth window bay with a Roman Doric porch. Continuous first floor balcony with cast-iron railings.

Listing NGR: TQ2128576115

Site Number	6
Site Name	THE PRIORY HOSPITAL (INCLUDING ICE HOUSE)
Type of Site	Listed Building (Post-medieval)
Listing No./NRHE Number	1184609
HER Number	
Status	Grade: II Listed Building
Easting	521525
Northing	175185
Council	London Borough of Richmond
Description	1184609

PRIORY LANE SW15 1. 5033 The Priory Hospital (including ice-house) TQ 27NW 1/1 18.2.75 II 2. Early 19th Century stucco Gothic with slate roofs behind battlements. Two-storeys. [North (former entrance) elevation to Dowdeswell Close.] Long, irregular font, central advanced, entrance bay with pointed-arch door of panel tracery recessed behind taller pointed arch in gabled porch. Niche above with figure of bishop. Octagonal towers left and right supporting triplets of Tudor-type stacks. Octagonal buttresses and pilaster strips cut by chamfered strings characterise the elevation, which is pierced by a variety of windows. [South (garden) elevation.] Three-bay pointed-arch entrance loggia with trellis-moulded interior pierced by central panel-tracery double door between mullion-and-transom windows. Flanking octagonal towers with panel-tracery windows under pointed-arch drip moulds. Tudor-type stacks. To right, long asymmetrical right-angled range articulated by pinnacled buttresses. Later extensions to left of loggia and towards Priory Lane. Some interiors of note, including a chapel with a fine ceiling. Ice-house in grounds. Extensions by Romiau and Cough circa 1840.

Listing NGR: TQ2152575185

Site Number	7
Site Name	HARE AND HOUNDS PUBLIC HOUSE
Type of Site	Listed Building (Post-medieval)
Listing No./NRHE Number	1253017
HER Number	
Status	Grade: II Listed Building
Easting	520636
Northing	175434
Council	London Borough of Richmond
Description	1253017

1. 5028 UPPER RICHMOND ROAD

""Hare and Hounds"" public house TQ 2075 13/5

II

2. Early C19, 3-storey building with basement. Three windows wide. Brick built with parapet and having a Tuscan porch to central entrance door with iron railings to provide a balcony for the central first floor window. The second floor central window is blank. Above, sash windows retain glazing bars. Below, modern window low frames. One window wide, brick extension over a carriage entrance. To the left again, a later off-licence and to the right, a single-storey brick extension neither of which included in the listing.

Listing NGR: TQ2063675434

Site Number	8
Site Name	117, HIGH STREET SW14
Type of Site	Listed Building (Post-medieval)
Listing No./NRHE Number	1065427
HER Number	MLO91039; DLO26036
Status	Grade: II Listed Building
Easting	520897
Northing	175994
Council	London Borough of Richmond
Description	1065427

1. 5028 HIGH STREET (north side) Mortlake, SW14

No 117 TQ 2075 13/1 25.10.51

II GV

2. Late C18, 2-storey house. Five window bays wide. Parapeted brick front with rendered ground floor. Tiled gambrel roof with 3 dormers. Early C19 doorcase with reeded architrave and rosette stops. To the left a C19 bay window. River elevation irregular, with large 3-storey, 3-bay bow with early C19 cast-iron balcony with tented lead canopy. Interior not seen.

Listing NGR: TQ2089775994

Site Number	9
Site Name	PARISH CHURCH OF ST MARY
Type of Site	Listed Building (Medieval; Post-medieval)
Listing No./NRHE Number	1357705
HER Number	MLO91480; DLO26477
Status	Grade: II* Listed Building

Easting	520845
Northing	175941
Council	London Borough of Richmond
Description	1357705

1. 5028 HIGH STREET (south side) Mortlake, SW14

Parish Church of St Mary TQ 2075 13/3 25.10.51

II*

2. Founded 1348 on a site to west of present church, which dates from 1543. The tower is of that date. The building was enlarged in 1725 and 1845. The chancel is of 1885, the nave and south aisle of 1906 by Sir A Blomfield. Vestry House, adjoining, of 1660-70 possibly with some earlier work. Western tower has 4 stages with later cupola. Chequer work of stone and flint to third storey. Tudor brick with stone dressings above. Polygonal stair turret to north-east corner. North aisle of church brick. Rest now rubblestone, late C19 and C20. Perpendicular style clerestory. Low pitched lead roof. Chancel lower than nave Vestry House, adjoining north aisle towards west: a red brick building of 2 storeys. Slate hipped roof. Two windows wide. Upper windows square headed, 2-light with timber mullions and transom. One similar window to left below, but set in chanfered stone recess with segmental relieving arch set in brickwork above. Right-hand lower window retains 2 chanfered mullions.

Listing NGR: TQ2084575941

Site Number	10
Site Name	SUTHREY HOUSE WITH ATTACHED RAILINGS
Type of Site	Listed Building (Post-medieval)
Listing No./NRHE Number	1286039
HER Number	MLO91448; DLO26445
Status	Grade: II Listed Building
Easting	520930
Northing	175990
Council	London Borough of Richmond
Description	1286039

1. 5028 HIGH STREET (north side) Mortlake, SW14

No 119 (Suthrey House) with attached railings TQ 2075 13/2 25.10.51

II GV

2. C18. L-shaped with right end to street and small courtyard entrance with C18 railings. Two storeys, stock brick with red dressings to main fronts. Three blank windows to road, 4 flush-framed windows to courtyard. River front is 2-storeys, 6 window bays wide. Central pilastered doorcase. Tiled roof behind parapet. Interior not seen.

Listing NGR: TQ2093075990

Site Number	11
Site Name	LIMES HOUSE AND FORECOURT PIERS
Type of Site	Listed Building (Post-medieval)
Listing No./NRHE Number	1065428
HER Number	MLO91040; DLO26037
Status	Grade: II* Listed Building
Easting	521132
Northing	176050
Council	London Borough of Richmond
Description	1065428

This list entry was subject to a Minor Amendment on 18/05/2016

TQ 2176 12/5

Mortlake, SW14, HIGH STREET (north side), No 123, Limes House, with forecourt piers
(Formerly listed as No 123, with forecourt piers)

25.10.51

GV

II*

Circa 1720 with a front probably circa 1770. Two storeys, hipped slated gambrel roof with three dormers. Five windows wide with centre bay shallow projection. Central Roman Doric pedimented portico with triglyph frieze and paired columns. Later full height wings to either side without attic. Riverfront similar with similar porch. Interior has spacious entrance hall with good doorcases and staircase of circa 1720-40. There is a painting of the house by J M W Turner in the Frick collection, New York and National Gallery, Washington.

Listing NGR: TQ2113276050

Site Number	12
Site Name	30 The Terrace
Type of Site	Listed Building (Post-medieval)
Listing No./NRHE Number	1252959
HER Number	MLO91257; DLO26254
Status	Grade: II Listed Building
Easting	521290
Northing	176128
Council	London Borough of Richmond
Description	1252959

2. C18, 2-storey brick house, 3 windows wide with parapet and stone terminal orbs. A cast-iron balcony to the first floor with supports to ground level. A one window wide, set-back section on the left, approached by a single storey front extension having an entrance door opening onto the pavement with an ornamental fanlight over.

Listing NGR: TQ2129176128

Site Number	13
Site Name	Barnes Common
Type of Site	Archaeological Priority Area
Listing No./NRHE Number	
HER Number	DLO33499
Status	Archaeological Priority Area
Easting	521782
Northing	175555
Council	London Borough of Richmond
Description	Barnes Common Archaeological Priority Area

Site Number	14
Site Name	Mortlake and Barnes
Type of Site	Archaeological Priority Area
Listing No./NRHE Number	
HER Number	DLO33477
Status	Archaeological Priority Area
Easting	520715
Northing	175781
Council	London Borough of Hillingdon
Description	Mortlake and Barnes Archaeological Priority Area

Site Number	15
Site Name	Thames Foreshore and Bank
Type of Site	Archaeological Priority Area
Listing No./NRHE Number	
HER Number	DLO33481

Status	Archaeological Priority Area
Easting	520904
Northing	176063
Council	London Borough of Richmond
Description	The Thames has been a focus for human activity from earliest times, and archaeology may be found anywhere along it. Finds of all periods have been made along its banks, or been dredged from the river bed. The foreshore may in places preserve finds and wooded structures that have been buried by the rising water table over the last 10,000 years.

Site Number	16
Site Name	The River Thames Bank and Foreshore
Type of Site	Archaeological Priority Area
Listing No./NRHE Number	
HER Number	DLO33011
Status	Archaeological Priority Area
Easting	520993
Northing	176137
Council	London Borough of Richmond
Description	The Thames has been a focus for human activity from earliest times, and archaeology may be found anywhere along it. Finds of all periods have been made along its banks, or been dredged from the river bed. The foreshore may in places preserve finds and wooded structures that have been buried by the rising water table over the last 10,000 years

Site Number	17
Site Name	Barnes Bridge, Barnes, Richmond Upon Thames
Type of Site	Findspot (Prehistoric)
Listing No./NRHE Number	
HER Number	MLO118400
Status	Non-designated Heritage Asset
Easting	521300
Northing	176200
Council	London Borough of Richmond
Description	Prehistoric copper alloy pegged spearhead found on the River Thames foreshore near Barnes Bridge. The find dates from the Late Bronze Age (1) <1> Pamela Greenwood, 2013, Wandsworth Sites Database, 595 (Digital archive). SLO82277.

Site Number	18
Site Name	105 MORTLAKE HIGH ST
Type of Site	Features (Prehistoric)
Listing No./NRHE Number	
HER Number	023147/00/00 - MLO71386
Status	Non-designated Heritage Asset
Easting	520840
Northing	175990
Council	London Borough of Richmond
Description	<p>Excavation undertaken by David Tyler for AOC, March'97; site code MTS97. Non-specifically dated prehistoric cut features were recorded. These included a curvilinear gully, postholes and stakeholes. Periods recorded under this site code: prehistoric (023147), medieval/post-medieval (023148), post-medieval (023149).</p> <p>AOC Archaeology Group, EXCAVATION AT 105 MORTLAKE HIGH ST (Excavation archive). SLO69343.</p> <p>AOC Archaeology Group, 1997, An Archaeological Excavation at 105 Mortlake High Street (Unpublished document). SLO69342.</p>

Site Number	19
Site Name	105 MORTLAKE HIGH ST
Type of Site	Dump (Medieval; Post-Medieval)
Listing No./NRHE Number	
HER Number	023148/00/00 - MLO71387
Status	Non-designated Heritage Asset
Easting	520840
Northing	175990
Council	London Borough of Richmond
Description	<p>Excavation undertaken by David Tyler for AOC, March'97; site code MTS97. Medieval and post-medieval dumping was recorded, thought to represent levelling/revetment to control the Thames. Periods recorded under this site code: prehistoric (023147), medieval/post-medieval (023148), post-medieval (023149).</p> <p>AOC Archaeology Group, EXCAVATION AT 105 MORTLAKE HIGH ST (GLSMR recording form). SLO69344.</p> <p>AOC Archaeology Group, EXCAVATION AT 105 MORTLAKE HIGH ST (Excavation archive). SLO69345.</p> <p>AOC Archaeology Group, 1997, An Archaeological Excavation at 105 Mortlake High Street (Unpublished document). SLO69342.</p>

Site Number	20
Site Name	105 MORTLAKE HIGH ST
Type of Site	Building (Post-medieval)
Listing No./NRHE Number	
HER Number	023149/00/00 - MLO71388
Status	Non-designated Heritage Asset
Easting	520840
Northing	175990
Council	London Borough of Richmond
Description	<p>Excavation undertaken by David Tyler for AOC, March'97; site code MTS97. A post-medieval building was found. Periods recorded under this site code: prehistoric (023147), medieval/post-medieval (023148), post-medieval (023149).</p> <p>AOC Archaeology Group, EXCAVATION AT 105 MORTLAKE HIGH ST (GLSMR recording form). SLO69346.</p> <p>AOC Archaeology Group, EXCAVATION AT 105 MORTLAKE HIGH ST (Excavation archive). SLO69347.</p> <p>AOC Archaeology Group, 1997, An Archaeological Excavation at 105 Mortlake High Street (Unpublished document). SLO69342.</p>

Site Number	21
Site Name	27 CHARLES ST
Type of Site	Findspot (Prehistoric)
Listing No./NRHE Number	
HER Number	022072/00/00 - MLO66083
Status	Non-designated Heritage Asset
Easting	521450
Northing	176100
Council	London Borough of Richmond
Description	<p>Watching brief undertaken by P Miller for Museum of London Archaeology Service, Oct'95; site code CSB95. A single worked flint, of probable prehistoric date, was recovered from a test pit. However, it is not known whether the object was in situ or redeposited.</p> <p>Museum of London Archaeology Service, 27 CHARLES ST, WB (GLSMR recording form). SLO62197.</p> <p>Museum of London Archaeology Service, 1995, 27 Charles Street, Barnes, London SW13: Watching Brief Report (Unpublished document). SLO62198.</p>

Site Number	22
Site Name	27 CHARLES ST
Type of Site	Findspot (19th Century)
Listing No./NRHE Number	
HER Number	022157/00/00 - MLO66734
Status	Non-designated Heritage Asset
Easting	521450
Northing	176100
Council	London Borough of Richmond
Description	<p>Evaluation undertaken by S Hoad for Museum of London Archaeology Service, Nov-Dec'95; site code CSB95. A postmedieval well of 19th century date was found.</p> <p>Museum of London Archaeology Service, 27 CHARLES ST, EVALUATION (GLSMR recording form). SLO63104.</p> <p>Museum of London Archaeology Service, 1996, 27 Charles Street, Barnes, London SW13: An Archaeological Evaluation (Unpublished document). SLO63105.</p>

Site Number	23
Site Name	27 CHARLES ST
Type of Site	Pit (19th Century)
Listing No./NRHE Number	
HER Number	022158/00/00 - MLO66735
Status	Non-designated Heritage Asset
Easting	521450
Northing	176100
Council	London Borough of Richmond
Description	<p>Evaluation undertaken by S Hoad for Museum of London Archaeology Service, Nov-Dec'95; site code CSB95. A 19th century pit was found.</p> <p>Museum of London Archaeology Service, 27 CHARLES ST, EVALUATION (GLSMR recording form). SLO63106.</p> <p>Museum of London Archaeology Service, 27 CHARLES ST, EVALUATION, CLIENT REPORT (Unpublished document). SLO63107.</p> <p>Museum of London Archaeology Service, 1996, 27 Charles Street, Barnes, London SW13: An Archaeological Evaluation (Unpublished document). SLO63105.</p>

Site Number	24
Site Name	28 The Terrace SW13

Type of Site	Listed Building (Post-medieval)
Listing No./NRHE Number	1252886
HER Number	MLO91255; DLO26252
Status	Grade: II Listed Building
Easting	521311
Northing	176141
Council	London Borough of Richmond
Description	II GV 2. C18, 3-storey brick house, 2 windows wide. First floor balcony railings to windows. Entrance door with ornamental fanlight in single storey side extension to right. Listing NGR: TQ2131176141"

Site Number	25
Site Name	5 James Terrace, Mortlake
Type of Site	House; Well (Post-Medieval; Modern)
Listing No./NRHE Number	
HER Number	MLO78258
Status	Non-designated Heritage Asset
Easting	520792
Northing	175911
Council	London Borough of Richmond
Description	A watching brief carried out by Paul Fitz on behalf of AOC Reduction of topsoil and the digging of trenches and pits in advance of the building of a self-contained extension revealed a possible 17th or 18th century well and the foundation courses of a cottage documented as being demolished in the 1930's. The watching brief showed that the current churchyard to the east did not extend to this area in an earlier period and that no evidence of Saxon activity, even in residual form, was present (1). <1> AOC Archaeology Group, 2004, An Archaeological Watching Brief at Land Adjacent to 5 James Terrace, Vineyard Path (Unpublished document). SLO77436"

Site Number	26
Site Name	75 MORTLAKE HIGH ST
Type of Site	Findspot (Post-medieval)
Listing No./NRHE Number	
HER Number	022292/00/00 - MLO68060
Status	Non-designated Heritage Asset
Easting	520730

Northing	176000
Council	London Borough of Richmond
Description	<p>Evaluation undertaken by Andrew Hutchison for WA, June'96; site code HSL96. Dumps of pottery thought to relate to the pottery of William Sanders (1750-1824 see MLO71685) were recorded. The pottery mainly consisted of a limited range of tin-glazed earthenware forms, mainly small storage containers or ointment pots, mostly discarded at the biscuit-ware stage (ie: after the first firing). It is likely that they represent a single dumping episode of contemporary forms. Kiln furniture included brick/tile, some vitrified, saggars, pegs or bars and flat curved fragments, possibly from rings. No further periods recorded under this site code.</p> <p>Wessex Archaeology, 75 HIGH ST, MORTLAKE (Excavation archive). SLO65001.</p> <p>Wessex Archaeology, 1996, Lord Napier Public House, 75 High Street, Mortlake: Archaeological Field Evaluation (Unpublished document). SLO65000.</p>

Site Number	27
Site Name	77-91 Mortlake High Street
Type of Site	Gully (Prehistoric)
Listing No./NRHE Number	
HER Number	MLO75659
Status	Non-designated Heritage Asset
Easting	520710
Northing	175990
Council	London Borough of Richmond
Description	<p>The excavation of trench 6 revealed two prehistoric features. One of them the east-west gully cut across the whole of the trench filled by a brown sandy clay.</p> <p>This truncated the overlying alluvial layers.</p> <p>Pre-Construct Archaeology, 2000, Archaeological evaluation at 77-91 Mortlake High Street, Richmond, London SW14 (Unpublished document). SLO75836.</p>

Site Number	28
Site Name	77-91 Mortlake High Street
Type of Site	Pit (Prehistoric)
Listing No./NRHE Number	
HER Number	MLO75660
Status	Non-designated Heritage Asset
Easting	520770
Northing	176010
Council	London Borough of Richmond
Description	Two shallow pits with a small quantity of burnt flint in their fills were recorded in the south of

the site on the higher ground away from the river. There is other evidence in Mortlake High Street, in particular shallow pits, a ditch and other cut features.

Pre-Construct Archaeology, 2001, Assessment of an archaeological excavation at 77-91 Mortlake High Street, Richmond (Unpublished document). SLO75837.

Site Number	29
Site Name	77-91 Mortlake High Street
Type of Site	Pit (Prehistoric)
Listing No./NRHE Number	
HER Number	MLO77301
Status	Non-designated Heritage Asset
Easting	520770
Northing	176010
Council	London Borough of Richmond
Description	<p>Cut into the west side of trench 6 was a shallow circular pit, 1m in diameter and 0.1m deep. The fill contained a single fragment of burnt flint and was yellowish brown sandy clay with pebble inclusions. Truncating the centre of the pit was a stakehole the fill of which was mostly gravel but deep. It is assumed to be prehistoric in date.</p> <p>Pre-Construct Archaeology, 2000, Archaeological evaluation at 77-91 Mortlake High Street, Richmond, London SW14 (Unpublished document). SLO75836."</p>

Site Number	30
Site Name	77-91 Mortlake High Street
Type of Site	Wall (Post-medieval)
Listing No./NRHE Number	
HER Number	MLO77302
Status	Non-designated Heritage Asset
Easting	520770
Northing	176010
Council	London Borough of Richmond
Description	<p>A series of walls were found that seem to represent phased buildings in the 16th and 17th centuries. An external E-W wall ran parallel to Mortlake High Street with an abutting internal wall running N-S towards the river. An earlier N-S wall was truncated towards the east of the trench by the substantial E-W wall. The backfill of the drain in trench 4 was truncated by a clay lined 19th century wall which was backfilled with material including saggars from a pottery production kiln. There were also remains of a 18th - 19th century walls in trenches 1 and 6.</p> <p>Pre-Construct Archaeology, 2000, Archaeological evaluation at 77-91 Mortlake High Street, Richmond, London SW14 (Unpublished document). SLO75836."</p>

Site Number	31
Site Name	77-91 Mortlake High Street
Type of Site	Alignment (Undated)
Listing No./NRHE Number	
HER Number	MLO77303
Status	Non-designated Heritage Asset
Easting	520770
Northing	176010
Council	London Borough of Richmond
Description	<p>Two lines of stake and postholes were revealed in the north of the site forming a possible building or structure, although no dating evidence was retrieved from their fills. The alignment reached N-S and consisted of 9 stakeholes and one posthole cut into the alluvial clayey silt to the east and three postholes with one stakehole cut into the west. This may have formed a possible structure or building.</p> <p>Pre-Construct Archaeology, 2001, Assessment of an archaeological excavation at 77-91 Mortlake High Street, Richmond (Unpublished document). SLO75837."</p>

Site Number	32
Site Name	77-91 Mortlake High Street
Type of Site	Building (Medieval; Post-medieval)
Listing No./NRHE Number	
HER Number	MLO77304
Status	Non-designated Heritage Asset
Easting	520770
Northing	176010
Council	London Borough of Richmond
Description	<p>A series of walls were interpreted as delineating two structures dating from the late 15th to the 17th century. There were probably two contemporary properties on two narrow burgage plots in the eastern half of the site, each with a western passageway leading from the High Street in the south to the river Thames in the north. A decorative floored room was excavated in the eastern property and possible bakery in the western property.</p> <p>In the late 17th century the two properties were amalgamated into one large three storey house fronting onto the High Street. The house was extended north toward the river in the 18th century and demolished in the early 19th century.</p> <p>Pre-Construct Archaeology, 2001, Assessment of an archaeological excavation at 77-91 Mortlake High Street, Richmond (Unpublished document). SLO75837.</p>

Site Number	33
--------------------	----

Site Name	77-91 Mortlake High Street
Type of Site	Structure (Post-medieval)
Listing No./NRHE Number	
HER Number	MLO77305
Status	Non-designated Heritage Asset
Easting	520770
Northing	176010
Council	London Borough of Richmond
Description	<p>An unusual hexagonal brick structure was located to the west of the house in the 18th century and may have been a fountain in the property's garden.</p> <p>Pre-Construct Archaeology, 2001, Assessment of an archaeological excavation at 77-91 Mortlake High Street, Richmond (Unpublished document). SLO75837.</p>

Site Number	34
Site Name	GREENS BOAT HOUSE (OPPOSITE)
Type of Site	Findspot (Saxon)
Listing No./NRHE Number	
HER Number	021051/00/00 - MLO19002
Status	Non-designated Heritage Asset
Easting	521300
Northing	176200
Council	London Borough of Richmond
Description	<p>SAXON IRON LANCE HEAD FOUND 1918.</p> <p>LANCE HEAD (Artifact). SLO33889.</p> <p>South West London Archaeological Unit, SMR CARD (Unpublished document). SLO33888"</p>

Site Number	35
Site Name	MORTLAKE
Type of Site	Findspot (Prehistoric)
Listing No./NRHE Number	
HER Number	020853/00/00 - MLO6753
Status	Non-designated Heritage Asset
Easting	520700
Northing	175700
Council	London Borough of Richmond
Description	FLINT ARTIFACT (A NARROW LEVALLOISIAN FLAKE FROM A TORTOISE CORE) FOUND 15FT

DOWN IN SAND 300YDS AWAY FROM RIVER.

ROE D, A GAZETTEER OF BRITISH LOWER & MIDDLE PA SITES (Article in monograph). SLO10528.

ROE D, CBA LOWER & MIDDLE PALAEOLITHIC GAZETTEER (Unpublished document). SLO10526.

FLAKE (Artifact). SLO10525.

WYMER JJ, LOWER PALAEOLITHIC ARCHAEOLOGY IN BRITAIN (Article in monograph). SLO10529.

South West London Archaeological Unit, SMR CARD (Unpublished document). SLO10524.

SMITH RA, THE STURGE COLLECTION (Article in monograph). SLO10527."

Site Number	36
Site Name	MORTLAKE HIGH ST
Type of Site	Church
Listing No./NRHE Number	
HER Number	021115/00/00 - MLO19129
Status	Non-designated Heritage Asset
Easting	520840
Northing	175990
Council	London Borough of Richmond
Description	<p>CHURCH LICENSED IN 1349 & BUILT WITHIN THE CURTILAGE OF THE MANOR HOUSE (021129) ON THE OPPOSITE SIDE OF THE HIGH ST FROM THE PRESENT BUILDING (201089).THE CHURCH WAS MOVED TO ITS PRESENT SITE BY HENRY VIII IN 1543. THERE ARE NO REMAINS OF THE FORMER CHURCH OTHER THAN A C14TH ARCH RE-ERECTED IN THE CHURCHYARD S OF THE PRESENT BUILDING.</p> <p>Ordnance Survey, Ordnance Survey Card Index, TQ 27 NW 35 (Ordnance Survey Archaeological Record Card). SLO31865.</p> <p>South West London Archaeological Unit, SMR CARD (Unpublished document). SLO34393.</p> <p>WEINREB B & HIBBERT C, THE LONDON ENCYCLOPEDIA (Article in monograph). SLO34392"</p>

Site Number	37
Site Name	Mortlake High Street (107) {Medieval flood deposit}
Type of Site	Flood Deposit (Medieval)
Listing No./NRHE Number	
HER Number	022228/00/00 - MLO67492
Status	Non-designated Heritage Asset
Easting	520850

Northing	176000
Council	London Borough of Richmond
Description	<p>Evaluation undertaken by Niall Roycroft for Museum of London Archaeology Service, May'96; site code MTK96. An accumulation of alluvial silts dated to the medieval period was recorded. It is thought that this may be connected with a possible foreshore. The finds included building material, refuse and pottery dated to the late C13th to the C15th. (1-3)</p> <p>Periods recorded under same site code: bronze age/iron age (022226-7), medieval (022228), post-medieval (022229-31)</p> <p><1> Museum of London Archaeology Service, 1996, 107 Mortlake High Street: Evaluation Report (Unpublished document). SLO64081.</p> <p><2> Museum of London Archaeology Service, 1996, 107 Mortlake High Street: Evaluation Report (GLSMR recording form). SLO64082.</p> <p><3> Museum of London Archaeology Service, 1996, 107 Mortlake High Street: Archive for an Evaluation (Excavation archive). SLO80603.</p>

Site Number	38
Site Name	Mortlake High Street (107) {Post medieval buildings}
Type of Site	Features (Post-medieval)
Listing No./NRHE Number	
HER Number	022229/00/00 - MLO67494
Status	Non-designated Heritage Asset
Easting	520850
Northing	176000
Council	London Borough of Richmond
Description	<p>Evaluation undertaken by Niall Roycroft for Museum of London Archaeology Service, May'96; site code MTK96. A complex sequence of buildings was found on the site of 107 Mortlake High Street, dating to between the 17th and 19th centuries. These buildings were separated by gravel surfaces, with access to the Thames via St Mary's wharf to the north. A building dated to the mid-16th century onwards was constructed on the site fronting the High Street. Another brick building was constructed in the middle of the site. Both of these buildings had brick-tile floors internally and were separated by gravel surfaces. The building fronting the High Street had a gravel surfaced yard or path, which sloped down to the Thames, to the north. (1-3)</p> <p>Periods recorded under same site code: bronze age/iron age (022226-7), medieval (022228), post-medieval (022229-31)</p> <p><1> Museum of London Archaeology Service, 1996, 107 Mortlake High Street: Evaluation Report (Unpublished document). SLO64081.</p> <p><2> Museum of London Archaeology Service, 1996, 107 Mortlake High Street: Evaluation Report (GLSMR recording form). SLO64082.</p> <p><3> Museum of London Archaeology Service, 1996, 107 Mortlake High Street: Archive for an Evaluation (Excavation archive). SLO80603.</p>

Site Number	39
Site Name	Mortlake High Street (107) {Post medieval industrial}
Type of Site	Features (Post-medieval)
Listing No./NRHE Number	
HER Number	022231/00/00 - MLO67497
Status	Non-designated Heritage Asset
Easting	520850
Northing	176000
Council	London Borough of Richmond
Description	<p>A possible metal works and furnace were found through excavation at the site of 107 Mortlake High Street by the Museum of London Archaeology Service in 1996. The remains of a building were found in the western part of the site. This building showed evidence of 19th century reconstructions, but parts may be 18th century or earlier in date, possibly including additions, extensions and alterations of an earlier building situated in the centre of the site (see 022229). The building showed evidence of metalworking, with molten metal spilt in various locations on a flagstone floor. Pottery recovered during the excavation gave a date range for the first phase of the building as 1700-1900. A possible furnace found to the south of the building may also be connected with metalworking. The furnace was sunk to a depth of c4.30m OD. An area of scorching was found under the furnace. (1-3)</p> <p>Periods recorded under same site code: bronze age/iron age (022226-7), medieval (022228), post-medieval (022229-31)</p> <p><1> Museum of London Archaeology Service, 1996, 107 Mortlake High Street: Evaluation Report (Unpublished document). SLO64081.</p> <p><2> Museum of London Archaeology Service, 1996, 107 Mortlake High Street: Evaluation Report (GLSMR recording form). SLO64082.</p> <p><3> Museum of London Archaeology Service, 1996, 107 Mortlake High Street: Archive for an Evaluation (Excavation archive). SLO80603.</p>

Site Number	40
Site Name	Mortlake High Street (107) {Post medieval malthouse}
Type of Site	Malt House (Post-medieval)
Listing No./NRHE Number	
HER Number	022230/00/00 - MLO67496
Status	Non-designated Heritage Asset
Easting	520850
Northing	176000
Council	London Borough of Richmond
Description	<p>Evaluation undertaken by Niall Roycroft for Museum of London Archaeology Service, May'96; site code MTK96. The remains of an 18th century malt house were found through excavation at the site of 107 Mortlake High Street by the</p>

Museum of London Archaeology Service in 1996. In c1791, the probable malting house, was constructed on the north-eastern part of the site fronting the river. This was a large, multi-roomed building with deep foundations and good floors. It also had an associated drainage system. The malt house was demolished by the mid-19th century, c1835. This part of the site appears to have become a courtyard after its demolition. Pottery found during the excavation of the building dated to between 1700 and 1800.

Periods recorded under same site code: bronze age/iron age (022226-7), medieval (022228), post-medieval (022229-31)

<1> Museum of London Archaeology Service, 1996, 107 Mortlake High Street: Evaluation Report (Unpublished document). SLO64081.

<2> Museum of London Archaeology Service, 1996, 107 Mortlake High Street: Evaluation Report (GLSMR recording form). SLO64082.

<3> Museum of London Archaeology Service, 1996, 107 Mortlake High Street: Archive for an Evaluation (Excavation archive). SLO80603.

Site Number	41
Site Name	Mortlake High Street (107) {Prehistoric gully}
Type of Site	Gully (Prehistoric gully)
Listing No./NRHE Number	
HER Number	022227/00/00 - MLO67491
Status	Non-designated Heritage Asset
Easting	520850
Northing	176000
Council	London Borough of Richmond
Description	<p>Evaluation undertaken by Niall Roycroft for Museum of London Archaeology Service, May'96; site code MTK96. An E-W aligned gully was recorded. There were a small quantity of finds, all of which were well abraded.</p> <p>Periods recorded under same site code: bronze age/iron age (022226-7), medieval (022228), post-medieval (022229-31)</p> <p>Museum of London Archaeology Service, 1996, 107 Mortlake High Street: Archive for an Evaluation (Excavation archive). SLO80603.</p> <p>Museum of London Archaeology Service, 1996, 107 Mortlake High Street: Evaluation Report (Unpublished document). SLO64081.</p> <p>Museum of London Archaeology Service, 1996, 107 Mortlake High Street: Evaluation Report (GLSMR recording form). SLO64082."</p>

Site Number	42
Site Name	Mortlake High Street (107) {Prehistoric pits}

Type of Site	Pits (Prehistoric)
Listing No./NRHE Number	
HER Number	022226/00/00 - MLO67490
Status	Non-designated Heritage Asset
Easting	520850
Northing	176000
Council	London Borough of Richmond
Description	<p>Evaluation undertaken by Niall Roycroft for Museum of London Archaeology Service, May'96; site code MTK96. Two shallow cut features (0.3-0.4m deep) interpreted as pits were found. One was circular in plan, measured 0.30m in depth and was filled with mid brown silts and gravels. The second pit was rectilinear in plan, measured 0.30m in depth and was also filled with mid brown silts and gravels. No finds were recovered from either pit. (1-3)</p> <p>Periods recorded under same site code: bronze age/iron age (022226-7), medieval (022228), post-medieval (022229-31)</p> <p><1> Museum of London Archaeology Service, 1996, 107 Mortlake High Street: Evaluation Report (Unpublished document). SLO64081.</p> <p><2> Museum of London Archaeology Service, 1996, 107 Mortlake High Street: Evaluation Report (GLSMR recording form). SLO64082.</p> <p><3> Museum of London Archaeology Service, 1996, 107 Mortlake High Street: Archive for an Evaluation (Excavation archive). SLO80603.</p>

Site Number	43
Site Name	Mortlake Logboat
Type of Site	Boat (Prehistoric?)
Listing No./NRHE Number	
HER Number	MLO75285
Status	Non-designated Heritage Asset
Easting	520870
Northing	176490
Council	London Borough of Richmond
Description	<p>A fragment found before 1920 in the Thames. It was stated to be curved at one end and 15in (0.38m) long. There is no further trace, but a small unlabelled fragment in the Museum of London might be it. McGrail (1978) number 99.</p> <p>McGrail, Sean, 1978, Logboats of England and Wales (Monograph). SLO75702. Cowie, C & Eastmond, D., 1997, An archaeological survey of the foreshore in the Borough of Richmond upon Thames. (Article in serial). SLO75713."</p>

Site Number	44
--------------------	----

Site Name	North Worple Way/Worple Street [Mortlake Roman Catholic Cemetery], Mortlake, SW14 8PR {
Type of Site	Cemetery (Post-medieval; Modern)
Listing No./NRHE Number	
HER Number	MLO69104
Status	Non-designated Heritage Asset
Easting	520839
Northing	175806
Council	London Borough of Richmond
Description	<p>Mortlake Cemetery is located in the churchyard of St Mary Magdalen's Roman Catholic Church. It fills the space between the church and the nearby St Mary Magdalen's Roman Catholic Primary School, which uses a corner of the cemetery for a playground. Portions of the cemetery are also used for growing vegetables and the abundance of undergrowth contributes to this cemetery's obscurity (1) St Mary Magdalen's Church was constructed in 1852. It was designed by Gilbert Blount, architect to the Archbishop of Westminster, and was consecrated by the Bishop of Southwark in 1852. The primary school opened in 1853. (2-3) The cemetery is most notable for containing the mausoleum of 19th century writer and Orientalist Sir Richard Burton and his wife Isabel (MLO91018). The mausoleum takes the form of a tent rendered in stone and its doors are of Carrara marble. The tomb was vandalised and then bricked up in 1951, and was restored in 1975. The interior is visible through a glass panel. Other notable interments include the architects John Bentley (d.1902), who designed Westminster Cathedral and other Catholic churches, and Leonard Stokes (d.1925), winner of the RIBA Gold Medal in 1919 (2-3).</p> <p><1> Meller, H., 1985, London Cemeteries: An Illustrated Guide and Gazetteer, pp209-11 (Monograph). SLO10245.</p> <p><2> PEVSNER, N. & CHERRY, B., The Buildings of England. London 2: South, St Mary Magdalen's Roman Catholic Churchyard (Monograph). SLO68</p> <p><3> London Parks and Gardens Trust, 2007, London Parks and Gardens Trust Site Database, St Mary Magdalen's Roman Catholic Churchyard (Website). SLO78826.</p>

Site Number	45
Site Name	Prince's Road [Dissenters Burial Ground], East
Type of Site	Park (Post-medieval; Modern)
Listing No./NRHE Number	
HER Number	MLO102883
Status	Non-designated Heritage Asset
Easting	520866
Northing	175602
Council	London Borough of Richmond
Description	<p>Former Dissenters Burial Ground associated with East Sheen Congregational Church. The Congregational Church became East Sheen United Reformed Church and is no longer in use. The burial ground has been landscaped into a garden with paths and chain link fence. Only one gravestone remains, that of 'William Marshall of Northampton; 24 August 1854, late of the Bootmakers Asylum of Mortlake Surrey'. (1)</p>

<1> London Parks and Gardens Trust, 2007, London Parks and Gardens Trust Site Database, record 935 (Website). SLO78826.

Site Number	46
Site Name	South Worple Way [Barnes Hospital], East Sheen,
Type of Site	Hospital (Post-medieval; Modern)
Listing No./NRHE Number	
HER Number	MLO108175
Status	Non-designated Heritage Asset
Easting	521210
Northing	175680
Council	London Borough of Richmond
Description	<p>The Barnes Isolation Hospital was opened in 1889, to treat patients with infectious diseases. It joined the National Health Service in 1948, but by the following year was largely unoccupied as a consequence of the development and use of antibiotics. Around 1949, the decision was made to refurbish the buildings to house and treat chronic patients suffering from long-term illnesses. The facility was renamed Barnes Hospital. Ramps were added to the ward doorways to permit wheelchair access to the outside in periods of good weather. Between 1954 and 1955 the number of beds was increased from 90 to 114. From 1956, Barnes Hospital admitted only geriatric patients. In 2001, the Hospital buildings were subject to extensive renovation, and an extension was constructed as well. The focus of care provision shifted to services for elderly patients with mental illnesses. (1)</p>

<1> Chambers V, Lost Hospitals of London, Barnes Hospital (Website). SLO82527.

Site Number	47
Site Name	South Worple Way/ Avenue Gardens [Old Mortlake
Type of Site	Burial Grounds (Post-medieval; Modern)
Listing No./NRHE Number	
HER Number	MLO69034
Status	Non-designated Heritage Asset
Easting	521079
Northing	175670
Council	London Borough of Richmond
Description	<p>A small plot covering 6 acres , the unconsecrated acres to the west were added in 1877. A chapel which once stood in the centre has been demolished. (1)</p> <p>Old Mortlake Burial Ground was established in 1854 using land purchased for the parish through subscription. The first burial was that of William Langridge on 21st December 1854. In the south-east corner of the cemetery is an obelisk over the grave of Admiral Lord William Fitzroy who lived in Mortlake. Further land was purchased in 1874 when a Burial Board was created, and the cemetery was again extended to the west in 1877. The chapel has been</p>

demolished but an avenue of mature horse chestnut trees remains together with the original gate and railings on South Worple Way. The lodge by the Avenue Gardens gate is privately owned. Also buried here are Charles Dickens (died 1896), editor and son of the author Charles Dickens, and Dickens's sister in law Georgina Hogarth (died 1917). (2)

<1> Meller, H., 1985, London Cemeteries: An Illustrated Guide and Gazetteer, p 231 (Monograph). SLO10245.

<2> London Parks and Gardens Trust, 2007, London Parks and Gardens Trust Site Database, record 948 (Website). SLO78826."

Site Number	48
Site Name	St Michael and All Angels Church, [Southern
Type of Site	Wall (Post-medieval)
Listing No./NRHE Number	
HER Number	MLO97971
Status	Non-designated Heritage Asset
Easting	521439
Northing	176060
Council	London Borough of Richmond
Description	<p>The southern boundary wall is thought to run along the same line as an earlier boundary shown on surveys of 1741-1745. The earliest fabric of the wall is thought to date from the 1840's with further alteration following the construction of the church and again in the mid 20th century.</p> <p>Pre-Construct Archaeology, 2005, Historic Building Survey of the Southern Boundary Wall at St Michael's and All Angels Church, Barnes, London (Unpublished document). SLO77615."</p>

Site Number	49
Site Name	Tapestry Court
Type of Site	Ditch (Medieval)
Listing No./NRHE Number	
HER Number	MLO75647
Status	Non-designated Heritage Asset
Easting	520770
Northing	176000
Council	London Borough of Richmond
Description	<p>In the north of the site a NW-SE aligned ditch was recorded. It measured 1.6m wide and 0.3m deep. The fill was a greenish sandy silt containing large sherds of early medieval pottery dating AD 1150-1300.</p> <p>Pre-Construct Archaeology, 2002, Assessment of an archaeological excavation at Tapestry</p>

Court, Mortlake High Street, London, SW14 (Unpublished document). SLO75825.

Site Number	50
Site Name	Tapestry Court
Type of Site	Pit (Medieval)
Listing No./NRHE Number	
HER Number	MLO77281
Status	Non-designated Heritage Asset
Easting	520770
Northing	176000
Council	London Borough of Richmond
Description	<p>The north of the site also exposed a deep circular pit, 1.2m in diameter and 1.1m deep interpreted as a well. The fill was a reddish, brown silty clay with pottery, CBM and animal bone inclusions and dated to the late 15th century.</p> <p>Pre-Construct Archaeology, 2002, Assessment of an archaeological excavation at Tapestry Court, Mortlake High Street, London, SW14 (Unpublished document). SLO75825.</p>

Site Number	51
Site Name	Tapestry Court
Type of Site	Building (Post-medieval)
Listing No./NRHE Number	
HER Number	MLO77282
Status	Non-designated Heritage Asset
Easting	520770
Northing	176000
Council	London Borough of Richmond
Description	<p>Two properties were recorded on site one in the northern half of the site which dated to the 18th century and one in the southern half which dated to the 17th century. The properties were represented by the basements of vernacular buildings, both structures showed signs of alterations such as the replacement of worn floors and blocking walls. The 17th century tile and brick floored cellar of the property which fronted onto Mortlake High Street consisted of two rooms, the southernmost was probably used as a kitchen area, as a hearth and chimney were located in the corner of the room. The final alterations in this property date from the late 19th century, showing it remained in use for at least 150 years. The 18th century brick floored cellar in the northern property fronted onto the River Thames and may also have been used as a kitchen since it contained a hearth area in the southern room. This property was demolished in the late 19th century when the extant Tapestry Court building was constructed in 1892.</p> <p>Pre-Construct Archaeology, 2002, Assessment of an archaeological excavation at Tapestry Court, Mortlake High Street, London, SW14 (Unpublished document). SLO75825.</p>

Site Number	52
Site Name	THAMES FORESHORE
Type of Site	Fish trap (Undated)
Listing No./NRHE Number	
HER Number	022550/00/00 - MLO69815
Status	Non-designated Heritage Asset
Easting	520770
Northing	176030
Council	London Borough of Richmond
Description	<p>Foreshore survey undertaken by LARF under direction of Mike Webber, 1996; survey zone FRM18, Alpha no. A107. Three wooden posts, possibly the remains of a fishtrap.</p> <p>LARF: WEBBER M, THAMES FORESHORE SURVEY: ALPHA NUMBER A107 (Unpublished document). SLO67386."</p>

Site Number	53
Site Name	THAMES FORESHORE
Type of Site	Deposit (Undated)
Listing No./NRHE Number	
HER Number	022551/00/00 - MLO69816
Status	Non-designated Heritage Asset
Easting	520950
Northing	176040
Council	London Borough of Richmond
Description	<p>Foreshore survey undertaken by LARF under direction of Mike Webber, 1996; survey zone FRM18, Alpha no. A108. Consolidation deposit consisting of reddish brown clay with chalk cobbles.</p> <p>LARF: WEBBER M, THAMES FORESHORE SURVEY: ALPHA NUMBER A108 (Unpublished document). SLO67387."</p>

Site Number	54
Site Name	THAMES FORESHORE
Type of Site	Deposit (Undated)
Listing No./NRHE Number	
HER Number	022552/00/00 - MLO69817
Status	Non-designated Heritage Asset

Easting	521000
Northing	176050
Council	London Borough of Richmond
Description	Foreshore survey undertaken by LARF under direction of Mike Webber, 1996; survey zone FRM18, Alpha no. A109. Deposit of reddish brown clay. LARF: WEBBER M, THAMES FORESHORE SURVEY: ALPHA NUMBER A109 (Unpublished document). SLO67388."

Site Number	55
Site Name	THAMES FORESHORE
Type of Site	Deposit (Undated)
Listing No./NRHE Number	
HER Number	022553/00/00 - MLO69818
Status	Non-designated Heritage Asset
Easting	521080
Northing	176070
Council	London Borough of Richmond
Description	Foreshore survey undertaken by LARF under direction of Mike Webber, 1996; survey zone FRM18, Alpha no. A110. Consolidation deposit of chalk cobbles. LARF: WEBBER M, THAMES FORESHORE SURVEY: ALPHA NUMBER A110 (Unpublished document). SLO67389

Site Number	56
Site Name	THAMES FORESHORE
Type of Site	Structure (Undated)
Listing No./NRHE Number	
HER Number	022554/00/00 - MLO69819
Status	Non-designated Heritage Asset
Easting	521350
Northing	176220
Council	London Borough of Richmond
Description	LARF: WEBBER M, THAMES FORESHORE SURVEY: ALPHA NUMBER A111 (Unpublished document). SLO67390.

Site Number	57
--------------------	----

Site Name	THAMES FORESHORE
Type of Site	Findspot (Undated)
Listing No./NRHE Number	
HER Number	022562/00/00 - MLO69827
Status	Non-designated Heritage Asset
Easting	521100
Northing	176080
Council	London Borough of Richmond
Description	Foreshore survey undertaken by LARF under direction of Mike Webber, 1996; survey zone FRM18, Alpha no. A120. Scatter of nails. LARF: WEBBER M, THAMES FORESHORE SURVEY: ALPHA NUMBER A120 (Unpublished document). SLO67400."

Site Number	58
Site Name	THAMES FORESHORE
Type of Site	Findspot (Undated)
Listing No./NRHE Number	
HER Number	022563/00/00 - MLO69828
Status	Non-designated Heritage Asset
Easting	521210
Northing	176130
Council	London Borough of Richmond
Description	Foreshore survey undertaken by LARF under direction of Mike Webber, 1996; survey zone FRM18, Alpha no. A121. Scatter of nails. LARF: WEBBER M, THAMES FORESHORE SURVEY: ALPHA NUMBER A121 (Unpublished document). SLO67401.

Site Number	59
Site Name	THAMES FORESHORE
Type of Site	Findspot (Post-medieval; Modern)
Listing No./NRHE Number	
HER Number	022564/00/00 - MLO69829
Status	Non-designated Heritage Asset
Easting	520790
Northing	176030
Council	London Borough of Richmond
Description	Foreshore survey undertaken by LARF under direction of Mike Webber, 1996; survey zone

FRM18, Alpha no. A122. Scatter of building materials, including brick and tile debris. 19th century or 20th century date.

LARF: WEBBER M, THAMES FORESHORE SURVEY: ALPHA NUMBER A122 (Unpublished document). SLO67402.

Site Number	60
Site Name	THAMES FORESHORE
Type of Site	Findspot (Post-medieval; Modern)
Listing No./NRHE Number	
HER Number	022566/00/00 - MLO69831
Status	Non-designated Heritage Asset
Easting	520820
Northing	176030
Council	London Borough of Richmond
Description	Foreshore survey undertaken by LARF under direction of Mike Webber, 1996; survey zone FRM18, Alpha no. A124. Scatter of building material, including tile and iron. 19th century or 20th century date. LARF: WEBBER M, THAMES FORESHORE SURVEY: ALPHA NUMBER A124 (Unpublished document). SLO67404.

Site Number	61
Site Name	THAMES FORESHORE
Type of Site	Findspot (Post-medieval; Modern)
Listing No./NRHE Number	
HER Number	022567/00/00 - MLO69832
Status	Non-designated Heritage Asset
Easting	521070
Northing	176060
Council	London Borough of Richmond
Description	Foreshore survey undertaken by LARF under direction of Mike Webber, 1996; survey zone FRM18, Alpha no. A125. Anchor with chain, of 19th century or 20th century date. LARF: WEBBER M, THAMES FORESHORE SURVEY: ALPHA NUMBER A125 (Unpublished document). SLO67405

Site Number	62
--------------------	----

Site Name	Vine Road/Scarth Road/Ranelagh Avenue/Queen's
Type of Site	Park
Listing No./NRHE Number	
HER Number	MLO102791
Status	Non-designated Heritage Asset
Easting	521800
Northing	175600
Council	London Borough of Richmond
Description	*Coordinate Point moved closer to Study Area within Park*

Barnes Common was used jointly by the people of Barnes and Putney until 1589 when a dispute arose and the people of Barnes refused to allow those of Putney to have access. Until the area was drained in c.1880 the common was mainly marshland and it provided an interesting area of research for natural history societies. The common remains in the ownership of the Church Commissioners, the Dean and Chapter of St Paul's being Lord of the Manor. In the centre of the common is an island of houses at Mill Hill, the site of a former windmill; the original miller's house still exists, now part of Mill Hill Lodge. It was almost entirely treeless, as shown on the OS of 1870 but today the common is mainly woodland, coppice and heathland with some open areas of grass where cricket is played. Avenues and roadside planting took place in the late C19th, including London plane, lime and horse chestnut. The Old Barnes Cemetery (q.v.) is situated within the area of Barnes Common, adjacent to the boundary with Rocks Lane Recreation Ground. This was enclosed in 1854 as additional burial ground for Barnes parish churchyard.(1)

Barnes Parish Churchyard, also known as Old Barnes Cemetery, was in use between 1854 and 1954. It is now largely overgrown, although late nineteenth and early twentieth century memorials remain. The chapel, lodge, wall and railings were demolished in approximately 1966. (2)

<1> London Parks and Gardens Trust, 2007, London Parks and Gardens Trust Site Database, record 929 (Website). SLO78826.

<2> London Borough of RICHMOND UPON THAMES, 2007, Conservation Area Study Barnes Common No. 32 and Mill Hill No. 14, p1-5 (Website). SLO81947.

Site Number	63
Site Name	Charles Street (No 27), Barnes: Evaluation
Type of Site	Evaluation
Listing No./NRHE Number	
HER Number	ELO10526
Status	Event
Easting	521400
Northing	176050
Council	London Borough of Richmond
Description	Unpublished document: Museum of London Archaeology Service. 1996. 27 Charles Street, Barnes, London SW13: An Archaeological Evaluation. SITE CODE: CSB95.

Site Number	64
Site Name	Mortlake High Street (Nos 71-75), London SW14:
Type of Site	Excavation
Listing No./NRHE Number	
HER Number	ELO10575
Status	Event
Easting	520716
Northing	175986
Council	London Borough of Richmond
Description	Unpublished document: Museum of London Archaeology Service. 1997. 71-75 Mortlake High Street, London SW14: An Archaeological Post Excavation Assessment.

Site Number	65
Site Name	Worple Street [St Mary Magdalen's Catholic Primary
Type of Site	Desk Based Assessment
Listing No./NRHE Number	
HER Number	ELO11612
Status	Event
Easting	520819
Northing	175872
Council	London Borough of Richmond
Description	<p>A desk based assessment of St Mary Magdalen's Catholic Primary School was carried out by Compass Archaeology in July 2010.</p> <p>The site is considered to have a moderate potential for archaeological remains from the Prehistoric, Saxon and Medieval periods and a low potential for remains from the Roman period. The present building is the third different school building to have been built at the site since 1853 and all these building phases would have removed or had a severe impact on any surviving archaeological remains.</p> <p>Digital Report: Compass Archaeology. 2010. St Mary Magdalen's Catholic Primary School, Worple Street, Mortlake SW14 8HE, An Archaeological Desk-Based Assessment.</p>

Site Number	66
Site Name	Tapestry Court, Mortlake High Street, Mortlake:
Type of Site	Excavation
Listing No./NRHE Number	
HER Number	ELO148
Status	Event

Easting	520770
Northing	176000
Council	London Borough of Richmond
Description	<p>An archaeological excavation was carried out by Pre-construct Archaeology. Two trenches were excavated. In the north trench a late Medieval well and pit and a linear Medieval ditch were found beneath post-Medieval buildings.</p> <p>An eighteenth century brick floored cellar was revealed overlying an earlier seventeenth century brick building. In the south trench a seventeenth century tile floored cellar was revealed with a fireplace and a chimney in its northwest corner.</p> <p>Unpublished document: Pre-Construct Archaeology. 2002. Assessment of an archaeological excavation at Tapestry Court, Mortlake High Street, London, SW14.</p>

Site Number	67
Site Name	Mortlake High Street (Nos 77-91), Mortlake: Evaluation
Type of Site	Open Area Excavation
Listing No./NRHE Number	
HER Number	ELO161
Status	Event
Easting	520710
Northing	175990
Council	London Borough of Richmond
Description	<p>Archaeological evaluation at 77-91 Mortlake High Street, Richmond SW14 was carried out by PCA Ltd. The work was commissioned by Berkley Homes (West London) Limited. N-S trenches were dug in the western part of the site; E-W trenches were dug in the centre and south west; and a N-S trench in the south east. The western half of the site revealed 19th and 20th century deposits and structures. The eastern part 16th to 19th century buildings, drains and kiln furniture. The SE corner in addition held prehistoric features including a linear gully and a shallow circular pit with a stakehole in the centre.</p> <p>Unpublished document: Pre-Construct Archaeology. 2000. Archaeological evaluation at 77-91 Mortlake High Street, Richmond, London SW14.</p>

Site Number	68
Site Name	Mortlake High Street (Nos 77-91), Mortlake: Excavation
Type of Site	Open Area Excavation
Listing No./NRHE Number	
HER Number	ELO162
Status	Event
Easting	520770
Northing	176010
Council	London Borough of Richmond

Description Archive statement and assessment of an L-shaped area in the eastern half of 77-91 Mortlake High Street, Richmond, London SW14 by PCA Ltd. between 13/11/00 and 22/12/00. The work was commissioned by Berkeley Homes (West London) Ltd site was machined to 18th/19th century deposits. Two shallow pits were recorded presumed to be prehistoric. From the 15th century two properties were built on burgage plots and amalgamated into one high status building with out buildings of an industrial nature in the late 17th century. This was demolished in the early 19th century. The assessment contains original research questions and recommendations for further work.

Unpublished document: Pre-Construct Archaeology. 2001. Assessment of an archaeological excavation at 77-91 Mortlake High Street, Richmond.

Site Number 69

Site Name Charles Street (No 29), Barnes, Richmond, SW13 0NZ:

Type of Site Desk Based Assessment

Listing No./NRHE Number

HER Number ELO16227

Status Event

Easting 521380

Northing 176060

Council London Borough of Richmond

Description A desk based assessment was carried out in October 2011 and updated in January 2013 for 29 Charles Street, Barnes by CgMs Consulting.

The site was considered to have a low archaeological potential for all periods of human activity.

Digital Report: CgMs Consulting. 2013. Archaeological Desk Based Assessment, 29 Charles Street, Barnes, SW13 0NZ.

Site Number 70

Site Name Charles Street (No 29), Barnes, Richmond, SW13 0NZ:

Type of Site Desk Based Assessment

Listing No./NRHE Number

HER Number ELO16229

Status Event

Easting 521380

Northing 176060

Council London Borough of Richmond

Description A heritage statement was created in January 2013 for 29 Charles Street, Barnes by CgMs Consulting.

The assessment concluded that the proposed development would regenerate an area and

improve the setting of the nearby conservation areas.

Digital Report: CgMs Consulting. 2013. Heritage Statement, 29 Charles Street, Barnes, London.

Site Number	71
Site Name	Charles Street (No 27), Barnes: Watching brief
Type of Site	Archaeological Intervention / Excavation / Trial Trench
Listing No./NRHE Number	
HER Number	ELO3086
Status	Event
Easting	521400
Northing	176050
Council	London Borough of Richmond
Description	Unpublished document: Museum of London Archaeology Service. 1995. 27 Charles Street, Barnes, London SW13: Watching Brief Report. SITE CODE: CSB95

Site Number	72
Site Name	High Street (No 75), [Lord Napier Public House],
Type of Site	Open Area Excavation
Listing No./NRHE Number	
HER Number	ELO3669
Status	Event
Easting	520730
Northing	176000
Council	London Borough of Richmond
Description	Unpublished document: Wessex Archaeology. 1996. Lord Napier Public House, 75 High Street, Mortlake: Archaeological Field Evaluation. SITE CODE: HSL96.

Site Number	73
Site Name	Mortlake High Street (107): Evaluation
Type of Site	Evaluation
Listing No./NRHE Number	
HER Number	ELO4090
Status	Event
Easting	520850

Northing	176000
Council	London Borough of Richmond
Description	<p>An archaeological evaluation was carried out at 107 Mortlake High Street by the Museum of London Archaeology Service in 1996. Trial trenches revealed a site-wide deposit of natural gravels, sands and an ancient land surface subject to minor fluvial deposition. This surface was cut by two prehistoric pits and a ditch. Subsequent fluvial deposits covered the site from the prehistoric periods up to c1500. There was a complex sequence of buildings on the site dating from the 17th to 18th centuries. These buildings were separated by gravel surfaces with access to the Thames via St Mary's wharf. A large building, probably a malting house was constructed on the eastern part of the site in the late 18th century, fronting the river. This building was demolished in the 19th century. In the western part of the site, a probable 19th century extension of an earlier building was found, which showed evidence of metalworking. A furnace, located to the south, also indicated industrial activity.</p> <p>Natural gravels were recorded at a height of c3.34m OD, with overlying sands containing few gravels at a height of 3.36m OD to 3.60m OD.</p> <p>GLSMR recording form: Museum of London Archaeology Service. 1996. 107 Mortlake High Street: Evaluation Report. SITE CODE: MTK96.</p> <p>Excavation archive: Museum of London Archaeology Service. 1996. 107 Mortlake High Street: Archive for an Evaluation. SITE CODE: MTK96.</p> <p>Unpublished document: Museum of London Archaeology Service. 1996. 107 Mortlake High Street: Evaluation Report. SITE CODE: MTK96.</p>

Site Number	74
Site Name	Mortlake High Street (105), Mortlake: Excavation
Type of Site	Open Area Excavation
Listing No./NRHE Number	
HER Number	ELO4094
Status	Event
Easting	520840
Northing	175990
Council	London Borough of Richmond
Description	Unpublished document: AOC Archaeology Group. 1997. An Archaeological Excavation at 105 Mortlake High Street. SITE CODE: MTS97.

Site Number	75
Site Name	Hertford Avenue/Priory Lane, [Bank of England Sports
Type of Site	Watching Brief
Listing No./NRHE Number	
HER Number	ELO5019

Status	Event
Easting	521200
Northing	175129
Council	London Borough of Richmond
Description	<p>An archaeological watching brief was carried out at the Bank of England Sports Ground, Roehampton, by the Museum of London Archaeology Service in 2004. No significant archaeological features or finds were discovered. Layers recorded comprised recent made ground over natural deposits.</p> <p>Natural sandy clay and gravels were recorded at a depth of 0.45m.</p> <p>Unpublished document: Museum of London Archaeology Service. 2004. Bank of England Sports Ground, Roehampton SW15: An archaeological watching brief report.</p>

Site Number	76
Site Name	Mortlake, [Thames Tidal Defences, Mortlake Embayment
Type of Site	Desk Based Assessment
Listing No./NRHE Number	
HER Number	ELO5690
Status	Event
Easting	520510
Northing	176030
Council	London Borough of Richmond
Description	Unpublished document: Black & Veatch Consulting. 2004. Thames Tidal Defences: Mortlake Embayment Strategy Report: Volumes 1 and 2.

Site Number	77
Site Name	James Terrace (No 5), [Land adjacent to], Vineyard Path,
Type of Site	Watching Brief
Listing No./NRHE Number	
HER Number	ELO5975
Status	Event
Easting	520791
Northing	175910
Council	London Borough of Richmond
Description	Reduction of topsoil and the digging of trenches and pits in advance of the building of a self-contained extension revealed a possible 17th or 18th century well and the foundation courses of a cottage documented as being demolished in the 1930's. The watching brief showed that the current churchyard to the east did not extend to this area in an earlier period and that no evidence of Saxon activity, even in residual form, was present.

Unpublished document: AOC Archaeology Group. 2004. An Archaeological Watching Brief at Land Adjacent to 5 James Terrace, Vineyard Path.

Site Number	78
Site Name	Elm Bank Gardens, [St Michael and All Angels Church],
Type of Site	Building Survey
Listing No./NRHE Number	
HER Number	ELO6282
Status	Event
Easting	521440
Northing	176060
Council	London Borough of Richmond
Description	<p>Building survey undertaken by J Brown on behalf of PCA between 24th – 31st May 2005. The southern boundary wall is thought to run along the same line as an earlier boundary shown on surveys of 1741-1745. The earliest fabric of the wall is thought to date from the 1840's with further alteration following the construction of the church and again in the mid20th century.</p> <p>Unpublished document: Pre-Construct Archaeology. 2005. Historic Building Survey of the Southern Boundary Wall at St Michael's and All Angels Church, Barnes, London.</p>

Site Number	79
Site Name	White Hart Lane, Barnes: Desk based assessment
Type of Site	Desk Based Assessment
Listing No./NRHE Number	
HER Number	ELO6297
Status	Event
Easting	521200
Northing	175900
Council	London Borough of Richmond
Description	<p>Unpublished document: AOC Archaeology Group. 2005. An Archaeological Desk Based Assessment Of White Hart Lane, Barnes, London.</p>

Site Number	80
Site Name	The Terrace (No 31), Barnes: Building recording
Type of Site	Building Survey
Listing No./NRHE Number	
HER Number	ELO6298

Status	Event
Easting	521200
Northing	176000
Council	London Borough of Richmond
Description	<p>Building assessment carried out by S Brooks and K Whittaker on behalf of AOC Archaeology Group in March 2005. A proposed retail and residential development in conjunction with the demolition of the Garden House building. Once removed, the property of 13A White Hart Lane will be reinstated into the cartilage of 31 The Terrace. It was concluded that the developments would be beneficial to the area.</p> <p>Unpublished document: AOC Archaeology Group. 2005. An Assessment of the Historic Building and Curtilage of 31 The Terrace, Barnes.</p>

Site Number	81
Site Name	Arabella Drive (No 207), Barnes: Desk Based
Type of Site	Desk Based Assessment
Listing No./NRHE Number	
HER Number	ELO820
Status	Event
Easting	521700
Northing	175400
Council	London Borough of Richmond
Description	Unpublished document: Thames Valley Archaeological Services. 2003. 207 Arabella Drive, Barnes:An Archaeological Desk Based Assessment.

Site Number	82
Site Name	Barnes Green
Type of Site	Conservation Area
Listing No./NRHE Number	
HER Number	
Status	Conservation Area
Easting	521300
Northing	176161
Council	London Borough of Richmond
Description	<p>Barnes Green conservation area is surrounded by buildings and trees and includes the Laurel Road area, Church Road (including the Parish Church), Barnes High Street, and the length of the Riverside including The Terrace.</p> <p>The conservation area has been extended to include Cleveland Road and its row of Lion Houses, similar in design to those east of the Green. Between them and Station Road are houses in a variety of Victorian styles from 4 storey mansion blocks to two storey semi-</p>

detached villas. The street possesses strong architectural and environmental cohesiveness and being at right angles to Station Road relates well to the Green. It is an area of distinct identity, superior in form and architecture to surrounding development. Then to include the north eastern end of Stanton Road, characterised by small Victorian cottage type properties of simple appearance, and largely unaltered. It has strong architectural and physical cohesiveness. And to include the area bounded by Cleveland Road, The Maltings, Limes Avenue is an enclave of Victorian workers' cottages, small industrial buildings and a few earlier attractive cottage properties. The buildings are mostly unaltered and together form an easily identifiable group of great character, social and historical interest. The conservation area was last extended to include two remarkable groups of houses on Grange Road and Kitson Road. These include a group of impressive three-storey Edwardian semi-detached houses, and a unique group of interwar Arts and Crafts style houses incorporating St. Mary's Lodge. They form the wider setting of the listed early 18th century house The Grange.

Architecturally Barnes is an area of diversity. The Terrace, to the west, runs parallel to the Thames and has a number of 18th and 19th century buildings of exceptional quality. In contrast, Lonsdale Road is fronted by a number of 'London Flats' many of which retain original features. At the junction with Barnes High Street are two typical Victorian pubs with decorative tiling and etched glass, and next door a red brick late Victorian Police Station. This part of the conservation area is dominated by the listed Barnes Bridge (1849) by Joseph Locke. Barnes High Street is relatively undistinguished architecturally, with a mixture of traditional and modern building types; its character stems from the variety of uses.

The northern end of the Green is enclosed by a number of distinctive buildings, for example Milbourne house, St. Osmund's RC School, and the Sun Inn. Church Street is another important shopping area characterised by a continuous frontage of small shops many of which retain good details such as tiled stall risers, key-pattern pilasters and carved detail. St. Mary's Church, the Grange, Strawberry House and the Homestead form a listed group"

Site Number	83
Site Name	Mortlake
Type of Site	Conservation Area
Listing No./NRHE Number	
HER Number	
Status	Conservation Area
Easting	520963
Northing	176023
Council	London Borough of Richmond
Description	<p>Barnes Green conservation area is surrounded by buildings and trees and includes the Laurel Road area, Church Road (including the Parish Church), Barnes High Street, and the length of the Riverside including The Terrace.</p> <p>The conservation area has been extended to include Cleveland Road and its row of Lion Houses, similar in design to those east of the Green. Between them and Station Road are houses in a variety of Victorian styles from 4 storey mansion blocks to two storey semi-detached villas. The street possesses strong architectural and environmental cohesiveness and being at right angles to Station Road relates well to the Green. It is an area of distinct identity, superior in form and architecture to surrounding development. Then to include the north eastern end of Stanton Road, characterised by small Victorian cottage type properties of simple appearance, and largely unaltered. It has strong architectural and physical cohesiveness. And to include the area bounded by Cleveland Road, The Maltings, Limes Avenue is an enclave of Victorian workers' cottages, small industrial buildings and a few earlier attractive cottage properties. The buildings are mostly unaltered and together form an easily identifiable group of great character, social and historical interest. The conservation area was</p>

last extended to include two remarkable groups of houses on Grange Road and Kitson Road. These include a group of impressive three-storey Edwardian semi-detached houses, and a unique group of interwar Arts and Crafts style houses incorporating St. Mary's Lodge. They form the wider setting of the listed early 18th century house The Grange.

Architecturally Barnes is an area of diversity. The Terrace, to the west, runs parallel to the Thames and has a number of 18th and 19th century buildings of exceptional quality. In contrast, Lonsdale Road is fronted by a number of 'London Flats' many of which retain original features. At the junction with Barnes High Street are two typical Victorian pubs with decorative tiling and etched glass, and next door a red brick late Victorian Police Station. This part of the conservation area is dominated by the listed Barnes Bridge (1849) by Joseph Locke. Barnes High Street is relatively undistinguished architecturally, with a mixture of traditional and modern building types; its character stems from the variety of uses.

The northern end of the Green is enclosed by a number of distinctive buildings, for example Milbourne house, St. Osmund's RC School, and the Sun Inn. Church Street is another important shopping area characterised by a continuous frontage of small shops many of which retain good details such as tiled stall risers, key-pattern pilasters and carved detail. St. Mary's Church, the Grange, Strawberry House and the Homestead form a listed group

Site Number	84
Site Name	Queens Road Mortlake
Type of Site	Conservation Area
Listing No./NRHE Number	
HER Number	
Status	Conservation Area
Easting	521036
Northing	175655
Council	London Borough of Richmond
Description	<p>Mortlake is a good example of a Victorian cemetery with some fine mature trees. The adjoining terraces of small Victorian cottages, some of which face onto narrow alleyways and have unusual embellishments, possess a charming sense of space. This area forms one of the earliest settlements in Mortlake, evidenced by the historic street pattern. The area was extended to include properties in Trehern Road, Prince's Road and Queen's Road and the disused graveyard at the end of Prince's Road. The disused graveyard is a historically significant remnant of nonconformist worship in the area.</p> <p>The character of the area is determined by its long streets of terraced cottages, (with corner pubs forming intermittent foci) contrasted with the secluded greenery of the cemetery with Lodge Avenue as its western boundary. Queen's Road's original architectural character was of simple slate roofed houses with brick detailing some cottages have sash windows with red brick flat arches and doors with red brick round arches; pairs of houses share a stack. There are some dentil eaves detailing. Many houses have had features added and the proportions and glazing pattern of their windows changed which has affected the area's consistency and detracted from its simple unaffected character. Small pubs and shops, often at corner sites, focus interest and the Queen's Arms has a fine ceramic tiled frontage with lettering and decorations also in ceramic. The small shops opposite the Queen's Arms are also very important in providing points of interest in the street and have retained good shop-fronts. Lodge Avenue in the cemetery has more decorative features than the surrounding streets, as befits its position. This, together with its single sided layout opposite the cemetery's eastern boundary and pedestrian only access, gives it its unusual character. The terrace is double storey with central doors, having open triangular pediments in red brick, paired sash windows</p>

with ornate mullions and a dogtooth stringcourse. An attractive group of three roughcast cottages at nos. 67-71 Queen's Road, remain virtually unaltered and relate more to the properties to the north than those to the south outside the conservation area. The properties in Trehern Road and Prince's Road continue the form of long terraces of modest cottages containing a number of interesting architectural details, including a continuous ground floor porch to the properties in Trehern Road.

Site Number	85
Site Name	White Hart Lane
Type of Site	Conservation Area
Listing No./NRHE Number	
HER Number	
Status	Conservation Area
Easting	521459
Northing	175725
Council	London Borough of Richmond
Description	<p>White Hart Lane conservation area is a small cul de sac development of charming two storey terraced Victorian houses along Eleanor Grove and including a more imposing frontage of three storey commercial buildings to White Hart Lane, forming a gateway to this conservation area. Terraced cottages of painted brick or render enclose Eleanor Grove, either set behind small front gardens and boundaries or opening directly onto the street. A modest pair of later houses terminates the view North along this street. The older properties on the South side have shallow pitched slate roofs behind parapets with moulded cornice and blocking course detail. Younger properties display roofs with projecting eaves supported on corbels. Retained chimneystacks enliven the roofscape here. Houses retain a wealth of detail with moulded window surrounds and either bow windows or square bays with tripartite windows. The larger and well preserved buildings to White Hart Lane are of stock brick with render, set behind well planted front gardens and brick walls to the street. They have canted bay windows, distinctive tripartite windows to the first floor and moulded parapet details, with shallow slate roofs and prominent chimneys behind.</p>

Site Number	86
Site Name	Thorne Passage
Type of Site	Conservation Area
Listing No./NRHE Number	
HER Number	
Status	Conservation Area
Easting	521529
Northing	176021
Council	London Borough of Richmond
Description	Thorne Passage conservation area is formed by charming and cohesive groups of small scale

closely packed terraced cottages, divided by the nearby railway lines and green embankments. The distinctive narrow pedestrian passageways and private alleys of Thorne Passage, Beverley Path and Railway Side unite these cottages. These paths are linked by two late 19th century dark tunnels beneath the railway line, and further enclosed by high historic brick walls or fences with a wider backdrop of trees and allotments to the south. These cottages are predominantly of two storeys in stock brick with shallow pitched slate roofs and chimneys, many with original quartered timber sliding sash windows. Fences, walls and hedges with mature planting enclose small front gardens. Thorne Passage is a particularly unspoilt group of simple cottages with distinctive well planted gardens. The houses of Beverley Path also form a cohesive group, enlivened by red brick stringcourses and door arches, and original canted bay windows. Railway side is formed by groups of terraced cottages either set behind small front gardens or opening directly onto the path. The tiled façade of the public house is a distinctive feature of this area. Archway and Cross Streets contain a greater mix of building scale, height, style, colour and treatment. Ranging from two to three storeys, and including rendered facades or of stock brick with red brick detailing. Occasional canted bay windows, and a variety of treatments to entrances and doors are evident. There is a view north to the landmark Church of St. Michael and All Angels.

Site Number	87
Site Name	Mortlake High Street (Nos 61-69) London SW14: Desk
Type of Site	Desk Based Assessment
Listing No./NRHE Number	
HER Number	ELO10398
Status	Event
Easting	520690
Northing	175990
Council	London Borough of Richmond
Description	In June 1996 Museum of London Archaeology Service compiled an archaeological assessment of 61-69 Mortlake High Street.

It was concluded that there was potential for archaeological remains dating to the Saxon and medieval periods. The site is within the historic nucleus of Saxon and Medieval Mortlake and there may be evidence for structures and plot divisions fronting the High Street. Additionally, there may be evidence for earlier rural activity. There may also be evidence for post-medieval sugar refining, pottery production and brewing as well as a 19th century smithy and coach house. It was noted that there were not thought to be any visible extant basements.

Sources

Unpublished document: Museum of London Archaeology Service. 1996. 61-69 Mortlake High Street, London SW14: An Archaeological Assessment.

Site Number	88
Site Name	The River Thames Greater London: Survey

Type of Site	Desk Based Assessment; Field Survey
Listing No./NRHE Number	
HER Number	ELO1193
Status	Event
Easting	533980
Northing	176380
Council	London Borough of Richmond
Description	<p>In 1996-7 Thames Archaeological Survey conducted a baseline survey of 36 targeted zones. Each survey zone was approximately 500m long.</p> <p>The survey collected information on the nature, extent, significance and survival of archaeological material on the foreshore and also on the nature of deprivations and threats to that material.</p> <p>Sources</p> <p>Unpublished document: Mike D Webber. 1999?. Report on the Thames Archaeological Survey, 1996-1999.</p> <p>Unpublished document: Mike D Webber. 1997. Report on the Thames Archaeological Survey 1996-7: a collaborative venture.</p>

Site Number	89
Site Name	Charles Street (No. 29) Barnes London Borough of
Type of Site	Archaeological Intervention; Excavation; Trial Trench
Listing No./NRHE Number	
HER Number	ELO18651
Status	Event
Easting	521380
Northing	176060
Council	London Borough of Richmond
Description	<p>Archaeology South-East was commissioned by CgMs Consulting to undertake an archaeological evaluation at 29 Charles Street.</p> <p>Three trenches were excavated. One measured 20m x 1.80m, two measured 10m x 1.8m. Excavation was carried out by a mechanical excavator under archaeological supervision. The trenches were excavated in spits of no more than 0.25m.</p> <p>Across the site, stratigraphy was relatively consistent and consisted of natural orange Kempton Park sand and gravel (between 4.67m and 5.05m OD) overlain by yellowish-brown clayish-silt subsoil and dark grey silty clay.</p> <p>Several possible soakaways related to the 1930s garages were revealed. No other archaeological finds or features were observed.</p> <p>Sources</p> <p>Digital Report: Archaeology South East. 2016. Archaeological Evaluation Report 29 Charles Street, Barnes, London Borough of Richmond upon Thames, London.</p>

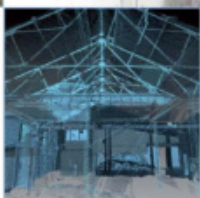
Site Number	90
Site Name	The Terrace (No. 27) Barnes London: Evaluation
Type of Site	Trial Trench
Listing No./NRHE Number	
HER Number	ELO19795
Status	Event
Easting	521320
Northing	176130
Council	London Borough of Richmond
Description	<p>In February 2014 Oxford Archaeology conducted an archaeological evaluation in the rear garden of 27 The Terrace.</p> <p>One trial trench was excavated. The natural gravels (at 7.54m OD) were overlain by a sandy clay, thought to be alluvial in origin. This was sealed by a sandy clay followed by the topsoil. The topsoil contained some modern brick fragments. No archaeological features or deposits were recorded.</p> <p>Sources</p> <p>Digital Report: Oxford Archaeology South. 2014. 27 The Terrace, Barnes, Richmond Upon Thames:Archaeological Evaluation Report.</p>

Site Number	91
Site Name	Mortlake High Street (Nos 61-69) London SW14: Evaluation and Excavation
Type of Site	Archaeological Intervention; Excavation; Area Excavation
Listing No./NRHE Number	
HER Number	ELO4056
Status	Event
Easting	520690
Northing	175990
Council	London Borough of Richmond
Description	<p>Between April and September 1997 Museum of London Archaeology Service conducted an archaeological evaluation and excavation of 61-69 Mortlake High Street.</p> <p>Five evaluation trenches were excavated for the evaluation and two open areas and a test pit were excavated for the excavation. The open areas measured 15 x 15m and 12.5m x 5m and the test pit measured c.1.5m square.</p> <p>Natural sands and gravels were recorded at 3.20m OD, with a gravel ridge running east-west identified in Trench 4. A prehistoric pit was found to cut the natural in Area 1. These deposits had been covered and probably truncated by 16th-17th century garden soils. These have been</p>

associated with the remains of walls and a pond, which were identified in Area 1, as well as bedding trenches in Area 2. These features have been interpreted as being associated with a Tudor house and garden. Above these features were structural remains related to the 17th century sugar refinery. Evidence of 18th century pottery production was also recovered including pottery wasters, kiln furniture and kiln debris. A kiln structure was identified in Areas 1 and 2. Evidence of the demolition of the pothouse in the 19th century was found followed by the structural remains of a 19th century malthouse and oathouses.

Source

Unpublished document: Museum of London Archaeology Service. 1997. 61-69 Mortlake High Street, London Sw14: An Archaeological Post Excavation Assessment. SITE CODE: MOT97.



AOC Archaeology Group, Edgefield Industrial Estate, Edgefield Road, Loanhead EH20 9SY
tel: 0131 555 4425 | fax: 0131 555 4426 | e-mail: edinburgh@aocarchaeology.com

www.aocarchaeology.com