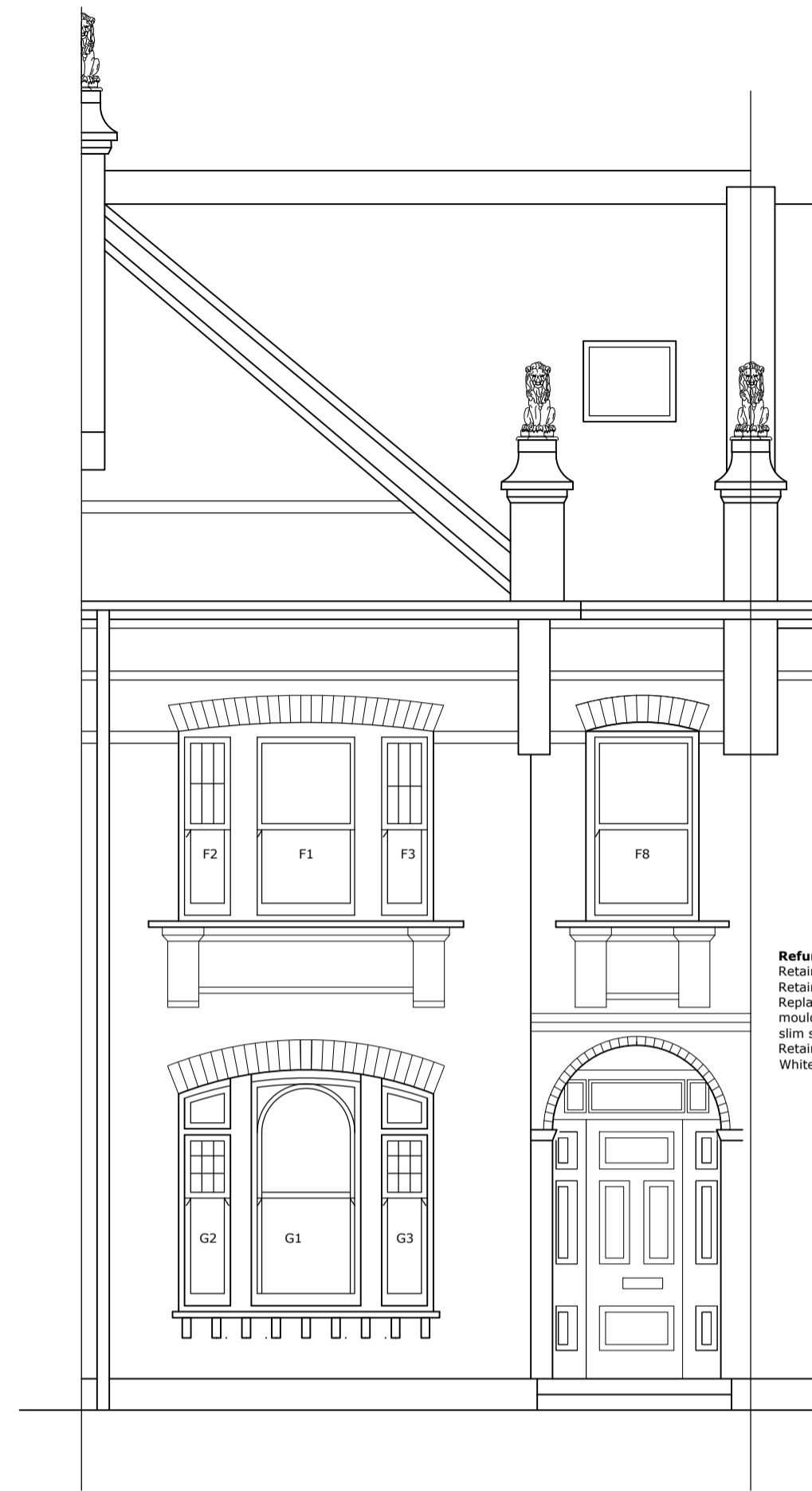




Refurbishment of windows
 Retain and repair/refurbish sash boxes
 Retain and repair cills (except where shown)
 Replace sashes with new sashes with
 mouldings/details to match originals, with
 slim sealed double glazed units.
 Retain pulleys, weights. Replace cords.
 White painted finish.

REAR ELEVATION



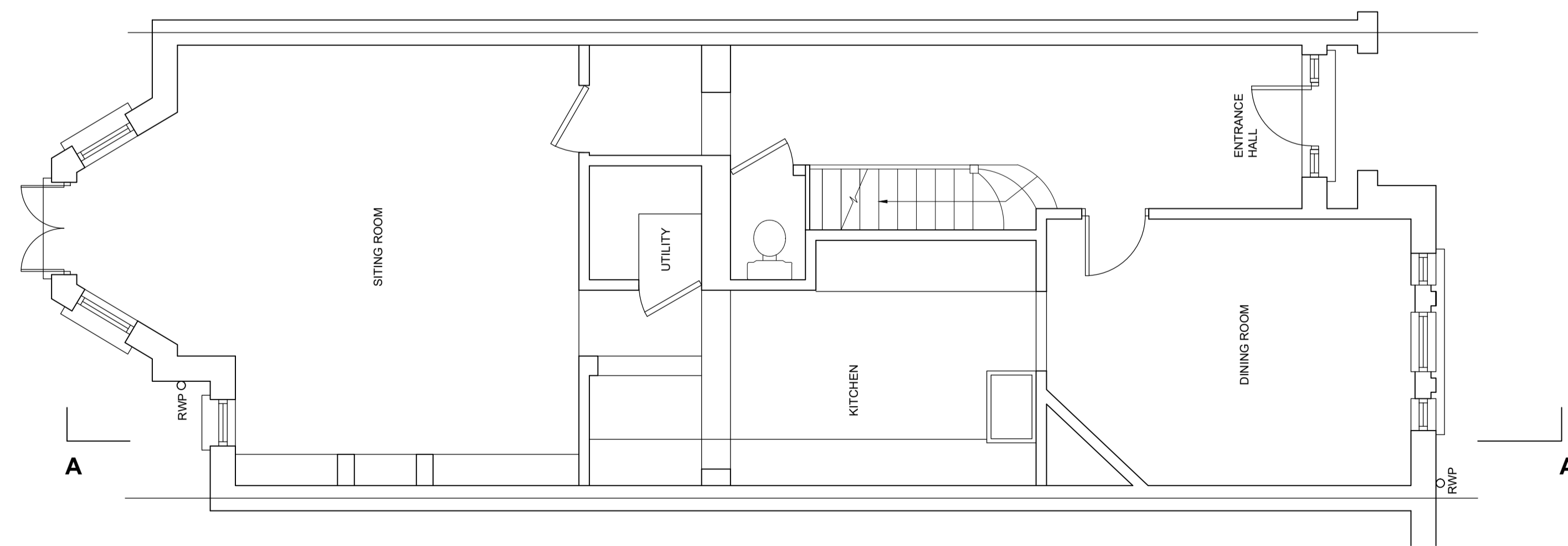
Refurbishment of windows
 Retain and repair/refurbish sash boxes
 Retain and repair cills (except where shown)
 Replace sashes with new sashes with
 mouldings/details to match originals, with
 slim sealed double glazed units.
 Retain pulleys, weights. Replace cords.
 White painted finish.

FRONT ELEVATION

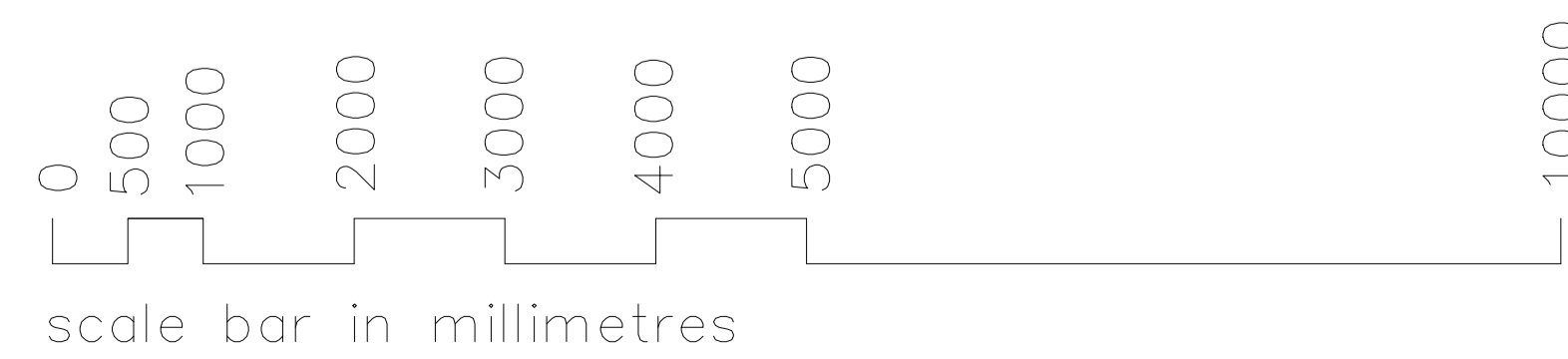


Refurbishment of windows
 Retain and repair/refurbish sash boxes
 Retain and repair cills (except where shown)
 Replace sashes with new sashes with
 mouldings/details to match originals, with
 slim sealed double glazed units.
 Retain pulleys, weights. Replace cords.
 White painted finish.

SIDE ELEVATION/SECTION AA




GROUND FLOOR PLAN



rev	description	date
-----	-------------	------

© Nigel Hartley 2021

 Chestnut Planning architecture and town planning 33 Trinity Church Road, Barnes, London, SW13 8ET T 07973753867 planning@chestnutplanning.co.uk chestnutplanning.co.uk	
client	ROGER HOODLESS
project	17 BELLEVUE ROAD
drawing	PROPOSED PLAN & ELEVATIONS
drawing status	planning
project no	669
scale	1/50 @ A3
drawing no	02
date	DEC 21
rev	