



HODKINSON



**Desktop Health
Impact Assessment**

Waldegrave Mews Ltd

189 Waldegrave Mews

Final

Zoë Lowther
BSc (Hons), PIEMA, AssocRTPI

October 2021

DOCUMENT CONTROL RECORD

REPORT STATUS: FINAL

Version	Date	Reason for Issue	Author	Checked by	Approved for Issue by Project Manager
v.1	22.09.21	Draft	Z Lowther	Z Watkins	Z Lowther
v.2	11.10.21	Final	Z Lowther	Z Watkins	Z Lowther

ABOUT HODKINSON CONSULTANCY

Our team of technical specialists offer advanced levels of expertise and experience to our clients. We have a wide experience of the construction and development industry and tailor teams to suit each individual project.

We are able to advise at all stages of projects from planning applications to handover.

Our emphasis is to provide innovative and cost effective solutions that respond to increasing demands for quality and construction efficiency.

This report has been prepared by Hodkinson Consultancy using all reasonable skill, care and diligence and using evidence supplied by the design team, client and where relevant through desktop research.

Hodkinson Consultancy can accept no responsibility for misinformation or inaccurate information supplied by any third party as part of this assessment.

This report may not be copied or reproduced in whole or in part for any purpose, without the agreed permission of Hodkinson Consultancy of Rickmansworth, Hertfordshire.

Executive Summary

The purpose of this Desktop Health Impact Assessment (HIA) is to assess and identify the potential positive and negative impacts of the proposed development at 189 Waldegrave Mews, Teddington in the London Borough of Richmond upon Thames on health and wellbeing in accordance with the National Planning Policy Framework, The London Plan, and the London Borough of Richmond upon Thames planning policy.

In accordance with relevant guidance, the structure of this document follows that of a Desktop HIA and as such largely follows the structure of the recommended Healthy Urban Planning Checklist published by the London Healthy Urban Development Unit (HUDU). A completed HUDU Checklist is also included in **Appendix A**.

This HIA considers the following themes:

- > **Healthy Housing** – The development provides new housing that is energy efficient, has appropriate levels of internal daylight, inclusive outdoor space and a good level of accessibility in accordance with London Plan policy.
- > **Active Travel** – The proposed developments incorporate measures to promote active travel and minimise car use such as cycle storage for residents and being ‘car free’. It is also located nearby to railway and bus stations.
- > **Healthy Environment** – An array of measures are included within the design and construction of the developments to reduce negative impact on the environment, improve air quality, enhance biodiversity, reduce flood risk and prevent overheating.
- > **Vibrant Neighbourhoods** – The proposed development is well located for access to local services within Teddington, employment and amenities making a positive contribution to the vibrancy and health of the wider neighbourhood.

CONTENTS

Executive Summary	2
<hr/>	
1. INTRODUCTION	4
2. DEVELOPMENT OVERVIEW	5
3. RELEVANT POLICY	7
4. BASELINE CONDITIONS	9
5. STRUCTURE OF THE HIA	10
6. HEALTH IMPACT ASSESSMENT	11
Healthy Housing	11
Active Travel	13
Healthy Environment	14
Theme 4: Vibrant Neighbourhoods	18
<hr/>	
7. SUMMARY	21
APPENDICES	22
Appendix A Healthy Urban Planning Checklist	22
Appendix B NHS Choices Search Results	22

1. INTRODUCTION

- 1.1 This document has been prepared by Hodkinson Consultancy, a specialist consultancy for planning and development to accompany the planning application for the proposed development at 189 Waldegrave Mews, Teddington in the London Borough of Richmond upon Thames.
- 1.2 The London Plan Policy GG3 states that the impacts of major development proposals on the health and wellbeing of communities should be considered, for example through the use of Health Impact Assessments (HIA). The Mayor of London's Social Infrastructure SPG (2015) describes a HIA as a '*practical decision-making tool that enables the potential positive and negative impacts of a proposal on health and wellbeing to be considered in a consistent, systematic and objective way*'. HIAs are also useful tools for informing developments of local policies and plans.
- 1.3 In accordance with the Mayor of London's Social Infrastructure SPG, this HIA is designed to identify opportunities for maximising potential health gains and minimising harm, whilst addressing inequalities and taking account of the wider determinants of health.
- 1.4 In accordance with relevant London Plan guidance, a Desktop HIA structure has been applied to the proposed developments and therefore largely follows the structure of the recommended Healthy Urban Planning Checklist published by the London Healthy Urban Development Unit (HUDU). A completed HUDU Checklist is also included in **Appendix A**. More detailed information about the structure of this HIA is set out in Chapter 5.

2. DEVELOPMENT OVERVIEW

Site Location

- 2.1 The proposed development sits within Teddington in the London Borough of Richmond upon Thames and comprises 1,100 sqm of land in total. The site is bounded by a railway line to the west, residential to the north and south, and a mix of residential and commercial to the east along Waldegrave Road. The site location is shown in Figure 1 below.



Figure 1: Site Location Aerial View (MMA Architects Design & Access Statement, September 2021)

- 2.2 The site is currently occupied by an existing office and residential buildings at 189 Waldegrave Road and dilapidated sheds at the rear yard area. Both elements are currently vacant.

Development Proposals

2.3 This report supports the full application described as follows:

“Comprehensive redevelopment of the site including demolition of the existing single storey rear buildings to provide 18 new apartments. 189 Waldegrave Road will be refurbished providing a small commercial space on the ground floor with 3 apartments above and behind.”

2.4 The proposed site plan is shown in Figure 2 below.



Figure 2: Proposed Site Plan: Ground Floor (MMA Architects, September 2021)

3. RELEVANT POLICY

- 3.1 The following planning policy and legislation has led the structure of the Health Impact Assessment for the proposed developments.

National Planning Policy: NPPF

- 3.2 The revised National Planning Policy Framework (NPPF) was published on the 20th July 2021 and sets out the Government's planning policies for England. The NPPF states that the planning system can play an important role in promoting healthy communities. It supports the role of planning to create healthy, inclusive communities by supporting local strategies to improve health, social and cultural wellbeing for all and by working with public health leads and health organisations to understand and take account of the health status and needs of the local population.
- 3.3 Building on the above, Chapter 8 of the NPPF calls for the promotion of healthy and safe communities which:
- > Promote social interaction, including opportunities for meetings between people who might not otherwise come into contact with each other – for example through mixed-use developments, strong neighbourhood centres, street layouts that allow for multiple connections within and between neighbourhoods, and active street frontages;
 - > Are safe and accessible, so that crime and disorder, and the fear of crime, do not undermine the quality of life or community cohesion – for example through the use of clear and legible pedestrian routes, and high quality public space, which encourage the active and continual use of public areas; and
 - > Enable and support healthy lifestyles, especially where this would address identified local health and wellbeing needs – for example through the provision of safe and accessible green infrastructure, sports facilities, local shops, access to healthier food, allotments and layouts that encourage walking and cycling.

Regional Planning Policy: The London Plan (2021)

- 3.4 The new London Plan (2021) links planning and health throughout and includes the following policy on improving health and addressing health inequalities:
- 3.5 **Policy GG3 Creating a Healthy City** states that those involved in planning and development must assess the potential impacts of development proposals on the mental and physical health and wellbeing of communities, in order to mitigate any potential negative impacts, maximise potential positive impacts, and help reduce health inequalities, for example through the use of Health Impact Assessments.

Mayor of London's Social Infrastructure SPG (2015)

- 3.6** This Supplementary Planning Guidance, adopted in May 2015, describes a Health Impact Assessment as a practical decision-making tool that enables the potential positive and negative impacts of a proposal on health and wellbeing to be considered in a consistent, systematic and objective way.
- 3.7** The SPG sets out the different types of Health Impact Assessment and when to use each type. Health Impact Assessments are commonly categorised as 'full', 'rapid' or 'desktop':
- > **Full:** A 'full' HIA involves comprehensive analysis of all potential health and wellbeing impacts. It can be demanding in time and resources e.g. requiring an extensive evidence search, expert analysis and primary data collection (including qualitative feedback from local residents and other stakeholders).
 - > **Rapid:** A 'rapid' HIA is a less resource-intensive process, involving a more focused investigation of health impacts, and usually takes days or weeks to complete (but still considers both quantitative and qualitative evidence sources, including some consultation with local stakeholders).
 - > **Desktop:** The 'desktop' HIA draws on existing knowledge and evidence to complete the assessment, often using published 'checklists' developed for this purpose.
- 3.8** The SPG stipulates that the type of HIA required should be proportionate to the size of the plan or project type and its likely implications for health and social infrastructure. The SPG also provides a suggested approach for deciding when to use different types of HIA (referred to in the following chapter of this report).

Local Planning Policy: London Borough of Richmond Local Plan (2018)

- 3.9** **Policy LP 30 Health and Wellbeing** states that planning, at all levels, can play a crucial role in creating environments that enhance people's health and wellbeing. The Council promotes and supports healthy and active lifestyles and measures to reduce health inequalities.
- 3.10** A Health Impact Assessment must be submitted with all major applications. The Health Impact Assessment should assess the health impacts of a development, identifying mitigation measures for any potential negative impacts as well as measures for enhancing any potential positive impacts.

4. BASELINE CONDITIONS

- 4.1** The proposed development lies in Teddington within the London Borough of Richmond upon Thames, in South West London. The Office for National Statistics administers a census of the population of the United Kingdom every ten years and the most recent census was in 2011.
- 4.2** As of 2011, there were 186,990 usual residents within the London Borough of Richmond upon Thames. In the 2011 census, 87.9% of the population of Richmond upon Thames considered themselves to have very good health and good health. On the other hand, 3.2% of the population considered themselves to be in bad and very bad health. The census of England as a whole stated that 81% considered themselves have very good and good health, therefore Richmond upon Thames appears to be above the England average as a whole.
- 4.3** In regard to long-term health problems or disabilities, 88.5% of the population said that their day-to-day activities were not limited by their health and 4.9% said their day-to-day activities were limited a lot. This was compared to England as a whole, whereby 82.4% of the population said that their day-to-day activities were not limited by their health and 8.3% said their day-to-day activities were limited a lot.

5. STRUCTURE OF THE HIA

Using an appropriate type of HIA

- 5.1 In accordance with the suggested approach set out in the Mayor of London's Social Infrastructure SPG, a Desktop HIA is considered the most appropriate for Strathmore Centre, Teddington. This is because the proposed development does not include a major infrastructure project, nor does it require an Environmental Impact Assessment.
- 5.2 In order to provide an appropriate level of assessment and in accordance with guidance in the Mayor's SPG, the London Healthy Urban Development Unit (HUDU) Healthy Urban Planning Checklist April 2017 version has been used. This is the latest version of the HUDU Checklist and despite it referencing the previous London Plan, it reflects the Mayor's Social Infrastructure SPG which is still a material planning consideration.

Themes

- 5.3 In accordance with the HUDU Healthy Urban Planning Checklist, this HIA is divided into the following four themes:
- > **Healthy Housing** – Includes an assessment of housing design, accessible housing, healthy living, and housing mix and type.
 - > **Active Travel** – Includes an assessment of measures to promote walking and cycling, safety, connectivity, and minimising car use.
 - > **Healthy Environment** – Includes an assessment of construction, air quality, noise, contaminated land, open space, play space, biodiversity, local food growing, flood risk and overheating.
 - > **Vibrant Neighbourhoods** – Includes an assessment of healthcare services, education, access to social infrastructure, local employment and healthy workplaces, access to local food shops and public buildings and spaces.
- 5.4 In accordance with the HUDU checklist guidance, it may be the case that some issues under the above mentioned themes will be more relevant to the development than others. Also, some issues may be directly related to the development whilst others may be relevant at a neighbourhood level where the cumulative impact of developments can contribute to the health of the neighbourhood.
- 5.5 Within the following chapter, this HIA provides information and assessment of each theme and refers to relevant planning policy where appropriate. A HUDU Healthy Urban Planning Checklist has also been completed and is included in **Appendix A**.

6. HEALTH IMPACT ASSESSMENT

Healthy Housing

Healthy Design

6.1 An assessment of the design in relation to health has been undertaken with specific focus on the energy efficiency of the future homes and meeting standards for daylight, sound insulation, private space, and accessible and adaptable dwellings.

6.2 The energy efficiency of homes has a significant impact on human health. The energy usage in homes contributes a significant proportion of the UK's total carbon emissions, therefore contributing to global CO₂ emissions.

6.3 An Energy and Sustainability Statement has been produced by SRE Ltd (September 2021). The energy strategy for the development follows the GLA Energy Hierarchy of *Be Lean, Be Clean, Be Green* and *Be Seen*. Through the implementation of Lean passive and active design measures and Green Low Zero Carbon Technologies, a 56.26% improvement over Baseline CO₂ emissions has been achieved.



6.4 Daylight and sunlight has important health benefits; it has been shown to improve people's mood and reduce depression and stress-related symptoms. An Internal Daylight Report has been produced by SRE Ltd (September 2021). This assessment includes the internal daylight and sunlight levels to the habitable rooms of the proposed development.

6.5 The assessment has been carried out for 15 rooms on the ground floor to represent 'worst case scenarios.' The overall result shows that all 15 assessed rooms exceed the recommendations set out for average daylight factors by BRE Guidelines and concludes that therefore, the proposed development will receive adequate daylight levels. Please refer to the Internal Daylight Report (September 2021) for further detail.

6.6 All dwellings will be provided with inclusive outdoor space in the form of private balconies and gardens, allowing residents to have access to outside which is good for their physical and mental health.

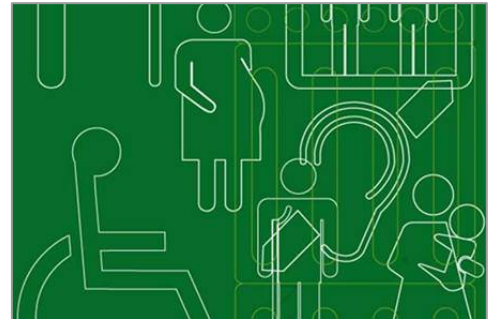
6.7 In order to reduce the likelihood of noise disturbances and complaints from neighbours and to ensure high quality developments are created, the development will be aiming to achieve airborne

and impact sound insulation values that will improve upon the performance standards outlined within the Building Regulations for England and Wales, Approved Document E.

- 6.8** Significant sources of indoor air pollution are building materials, coatings and furnishings, in particular formaldehyde and volatile organic compounds (VOCs). Building materials can release a wide range of VOCs, particularly during the first two years of a new build. The proposed development will utilise materials, coatings and furnishings with a low pollutant content in order to reduce indoor air pollution.

Inclusive Access

- 6.9** All dwellings will be designed to the Nationally Described Space Standards. In terms of access, 90% of the new dwellings will be designed and built to Building Regulations Approved Document M4(2) standards, with 10% to Part M4(3) in accordance with London Plan Policy D7. These standards will ensure accessible and adaptable accommodation for everyone; young families, older people, individuals with a temporary or permanent physical impairment, and allow residents to stay in their home despite developing disabilities. They also enable flexibility, visitability and future-proofing.



- 6.10** The proposed development will provide unobstructed and barrier-free level access to and from the entrance and exit points. The pathways between the footpath and buildings will be firm, slip-resistant and reasonably smooth and the main communal entrances will have level thresholds and have a clear opening of 850mm. These measures will improve accessibility for all residents and visitors.

Healthy Living

- 6.11** The dwellings within the proposed developments have been designed to comply with the relevant London Plan and Nationally Described Space Standards which includes minimum standards for bedrooms, storage and internal areas.

Housing Mix

- 6.12** It is important for an appropriate housing mix to be provided within new developments in order to create mixed and socially inclusive communities which have a positive impact on the physical and mental health of the residents. The proposed development will provide units ranging from one-bedroom (1 person), one-bedroom (2 person), two-bedroom (3 person) and two-bedroom (4 person).

Active Travel

Promoting Walking & Cycling

- 6.13** Sustainable transport options have been considered in respect of the developments and measures have been incorporated into the design to promote healthy travel methods by residents.
- 6.14** Waldegrave Road has wide footways on both sides of the carriageways with informal crossing facilities in the form of a pedestrian refuge, dropped kerbs and tactile paving immediately to the front of 198 Waldegrave Road.
- 6.15** The proposed development will provide a minimum of 30 long-term cycle storage spaces within secure cycle stores located to the rear of Block A and within Block B. A total of 6 short-term cycle spaces will be provided, with two 'Sheffield' style cycle hoops between Blocks A and B (providing 4 spaces) and a single Sheffield style hoop providing a further 2 short-term cycle spaces to the front of the commercial unit in Block A.
- 6.16** The development site is located off Waldegrave Road which provides a link from Teddington High Street north toward Twickenham. There is a small area of local services, shops and amenities immediately outside the site along Waldegrave Road, with Teddington High Street only a 10 minute walk away.



Connectivity

- 6.17** The scale of the site is such that it does not present any significant opportunity to connect public realm and internal routes to local and strategic cycle and walking networks and public transport. However, the site does promote the use of cycling by providing secure, covered cycle storage with direct access onto the street and is situated in a highly sustainable location with excellent access to public transport.
- 6.18** The site is located within 800m walking distance from Strawberry Hill mainline railway station and 1km from Teddington mainline rail station. Both stations provide access to direct services to London Waterloo and connections to the London Underground. During peak periods there are four services per hour in each direction, with the journey to London Waterloo taking approximately 40 minutes.
- 6.19** Furthermore, there are a number of bus stops located within walking distance of the site. The nearest bus stops are directly to the front of the site on Waldegrave Road, providing access to bus services 33 and N33. The 33 bus service provides access to a range of destinations including Fulwell Station, Teddington, Twickenham, Richmond and Barnes every 4-9 minutes, operating seven days a week.

Minimising Car Use

- 6.20** Through the provision of cycle storage and a sustainable location, within close proximity to transport links such as bus services and train stations, the use of sustainable transport modes will be encouraged.
- 6.21** The proposed development has been designed to be car free, apart from a single disabled space provided within the forecourt area to the front of the site. This will further reduce the reliance on private cars.

Healthy Environment

Construction

- 6.22** The development site will be registered with the Considerate Constructors Scheme (CCS) and will target a 'Best Beyond Practice' score.
- 6.23** The CCS is designed to encourage environmentally and socially considerate ways of working, to reduce any adverse impacts arising from the construction process. As commonly known, the aims are as follows:

- > Enhancing the appearance;
- > Respecting the community;
- > Protecting the environment;
- > Securing everyone's safety; and
- > Caring for the workforce.



- 6.24** During the construction processes, control procedures will be put in place to minimise noise and dust pollution and roads will be kept clean. Energy and water consumption will be recorded and measured against target consumption rates, and all construction timber will either be recycled or sourced from responsible sources. In addition, measures will be adopted to minimise the impact on the local area during construction including the limiting of air and water pollution in accordance with best practice principles.
- 6.25** The London Plan – The Control of Dust and Emissions during Construction and Demolition SPG seeks to reduce emissions of dust from construction and demolition activities in London. In accordance with this SPG and other relevant legislation, policy and guidance on the matter including London Plan Policies 5.3 and 5.18, it is anticipated that for a site of this scale and given the nature of the

proposed developments, measures will be implemented to reduce the impact of construction such as noise, vibration and dust, including the following:

- > Applying 'Best Practical Means' to reduce noise and vibration and their impacts;
- > The application of 'Prior Consent' to the Local Authority for noise generating activities;
- > Continuous monitoring during works and attention to agreed site working hours;
- > Minimising noise and vibration through effective working practices;
- > Reducing dust through preparation, maintenance and operating techniques;
- > Preventing pollution;
- > Maintaining neighbourhood relations through community engagement before and during construction to help alleviate fears and concerns; and
- > Minimising disruption to the local highway network.

6.26 The above measures will ensure that the impact of the construction process on the health of the local environment will be effectively minimised and managed.

Noise

6.27 Reducing noise pollution helps to improve the quality of life for residents, particularly in urban locations. Noise exposure indirectly affects physical health and wellbeing by disrupting sleep and increasing the risk of high blood pressure. Mental health and wellbeing can also be affected, causing disturbance, irritation, nuisance and dissatisfaction.

6.28 An Environmental Noise Assessment has been undertaken by Clear Acoustic Design Ltd (June 2021), allowing the assessment of daytime and night-time noise levels likely to be experienced by the future residents of the proposed development. A robust façade specification has been proposed to provide internal noise levels in accordance with BS8233.

Open Space

6.29 Access to open space is important as it has a positive impact on health and wellbeing. The location of the site is such that there are several other areas of open green space within very close proximity, including the following:

- > **Strawberry Woods** – A park situated between Fulwell and Teddington with a woodland play area including trim trail, numerous climbing features, sand pit and outdoor education features.

- > **Bushy Park** – The second-largest of London’s eight Royal Parks with over 445 hectares of park space.
- > **Ham Lands** – A 72 hectare Local Nature Reserve with a mixture of habitats ranging from woodland to wetland. Ham Lands are accessible at all times.

Play Space

6.30 Participation in regular physical activity is vital for healthy growth and development especially for children and young people. As described above, the proposed development is in close proximity to a number of open green spaces that children can play in. This includes Bushy Park which has a dedicated playground and Strawberry Woods Play Area.



Biodiversity

- 6.31** Access to nature and biodiversity contributes to mental health and wellbeing. With new development comes opportunity to enhance ecological value and create new habitats. The development site has been previously used for development and is predominantly covered in hard standing; therefore considered brownfield.
- 6.32** The proposed development will introduce soft landscaping, areas of green roof and private amenity spaces which will provide opportunity for small scale planting. As such it is anticipated that the development will provide a benefit to ecological value and biodiversity. The following measures will be incorporated into the scheme for soft landscaping and new planting wherever possible:
- > The use of native species and/or species of known wildlife value;
 - > The promotion of local ecology through the use of native seed and fruit bearing species;
 - > Attracting pollinators such as bees and butterflies through the use of flowering, nectar rich species;
 - > Combining natural and ornamental species to enrich the planting mix and promote local biodiversity.
- 6.33** The Biodiversity Net Gain has been calculated by Eight Associates as being a 639% net increase. Habitats that contribute to this score include extensive green roof, green wall, hedgerow and flower-rich perennial planting. These habitats will significantly improve the hardstanding and building infrastructure predominantly present prior to development.

Local Food Growing

6.34 Providing space for local food growing helps promote more active lifestyles, better diets and social benefits. The scale of the site is such that providing a significant area for local food growing is unlikely to be feasible. However, as discussed in previous sections, the proposed developments will include private amenity spaces which can be used for food growing.



Flood Risk

6.35 Flooding can have significant effects on people's mental health and wellbeing that may continue over a prolonged period of time. People can become distressed and the cleaning up process after the event causing increased stress and strain. It is often likely that increasing development densities and building coverage coupled with more frequent extreme weather events will increase urban flood risk. It is therefore important that flood risk, and measures to reduce the risk in new development, is assessed.

6.36 According to the Environment Agency's Flood Map shown in Figure 3 below, the proposed development lies in a low risk flood zone (Flood Zone 1), indicating that the probability of flooding is 0.1% (1 in 1000 years).

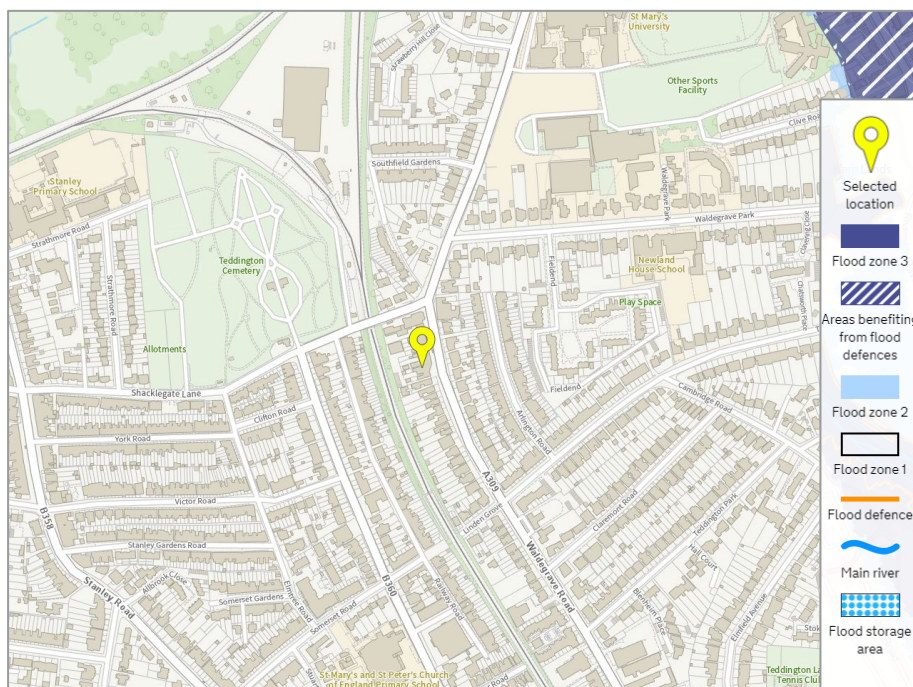
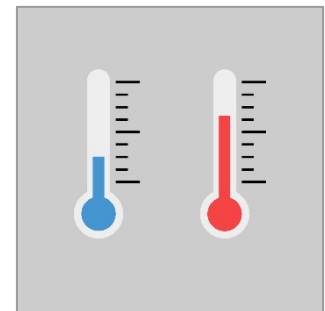


Figure 3: Flood Map for Planning – www.flood-map-for-planning.service.gov.uk

6.37 A number of Sustainable Drainage Systems have been proposed, allowing the development to meet surface water quantity management requirements whilst also providing a range of additional benefits for water quality, biodiversity, amenity value, and health and wellbeing of residents. These include permeable paving. Please refer to the Flood Risk Assessment and Drainage Strategy by Jomas Associates Ltd (July 2021) for further detail.

Overheating

6.38 Climate change with higher average summer temperatures is likely to intensify the urban heat island effect and result in discomfort and excess summer deaths amongst vulnerable people. Minimising the risk of summer overheating is important so as to ensure that homes are adapted to climate change and remain comfortable to occupy in the future.



6.39 Overheating Analysis has been carried out by SRE Ltd (September 2021). The units will incorporate a number of active and passive measures to reduce the risk of overheating and eliminate the need for active cooling. These include highly efficient building fabric, local shading features provided by the building form or internal blinds, low g-value glazing and Mechanical Ventilation with Heat Recovery (MVHR). Overheating risk has been assessed in accordance with CIBSE TM59 and TM52 and the results of the assessment indicate that under the specified weather file, the assessed ‘worse case’ habitable spaces in the top floor units pass the assessment criteria. Please refer to the report for further detail.

Vibrant Neighbourhoods

Health Services

6.40 Poor access and quality of healthcare services exacerbates ill health, making effective treatment more difficult. The provision of support services and advice on healthy living can prevent ill health.

6.41 The London Borough of Richmond upon Thames website provides information on the support services and advice available to residents of the Borough including relating to the following:

- > Adults and older people;
- > Carers;



- > Children and family care;
- > Community transport services;
- > Disabilities
- > Drug or alcohol addiction
- > Food;
- > Fostering, adopting and looked after children;
- > Help to quit smoking
- > Mental health services
- > Occupational therapy and specialist equipment
- > Residential and nursing care
- > Support to live at home.

6.42 An NHS Choices search has been undertaken and is included in **Appendix B**.

Education

6.43 Access to education can act to improve self-esteem, job opportunities and earning capacity of the local population.

6.44 The proposed development is located such that several educational establishments are within walking distance, including the following:

- > Stanley Primary School.
- > St James Catholic Primary School.
- > St. Mary's and St. Peter's Church of England Primary School.
- > Collis Primary School.
- > Teddington School.
- > St Mary's University, Twickenham.



Access to Social Infrastructure

- 6.45** Good access to local services is important to create and maintain lifetime neighbourhoods. It is not proposed to provide any social infrastructure on the site which is considered acceptable given the scale of the proposed development.

Local Employment

- 6.46** The construction process will be expected to create employment and supply opportunities to local businesses and opportunities for the local work force to receive training during site construction. Where possible, the developments will utilise the local labour force and local businesses throughout the construction programme.

Access to Local Food Shops

- 6.47** Hot food takeaways and similar outlets selling fast food can harm the vitality and viability of local centres and undermine attempts being made in a locality to promote the consumption of healthy food, particularly where schools are located nearby.
- 6.48** The proposed development does not include any retail outlets such as hot food takeaways and fast food restaurants.

Public Realm

- 6.49** The public realm has an important role to play in promoting walking and cycling, activity and social interaction and can affect people's sense of place, security and belonging.
- 6.50** The scale of the development is such that it does not include any public realm. It does however compliment the character of the area through sympathetic design and improvements to street scene appearance therefore having a positive impact on people's sense of place, security and belonging. As the site is currently occupied by vacant buildings and dilapidated sheds at the rear yard, the new development will inject a new lease of life into the nearby area.

7. SUMMARY

- 7.1 It is considered through this desktop Health Impact Assessment (HIA) that the proposed development at 189 Waldegrave Mews, Teddington will benefit from features in the design, and its location within the London Borough of Richmond upon Thames, that will benefit the health of the occupants as well as the local residents. It is also not considered to have any significant adverse impact on the provision of healthcare or educational facilities within the local or wider area.
- 7.2 This HIA considers the following themes:
- > **Healthy Housing** – The development provides new housing that is energy efficient, has appropriate levels of internal daylight, inclusive outdoor space and a good level of accessibility in accordance with London Plan policy.
 - > **Active Travel** – The proposed developments incorporate measures to promote active travel and minimise car use such as cycle storage for residents and being ‘car free’. It is also located nearby to railway and bus stations.
 - > **Healthy Environment** – An array of measures are included within the design and construction of the developments to reduce negative impact on the environment, improve air quality, enhance biodiversity, reduce flood risk and prevent overheating.
 - > **Vibrant Neighbourhoods** – The proposed development is well located for access to local services, employment and amenities making a positive contribution to the vibrancy and health of the wider neighbourhood.
- 7.3 In accordance with relevant guidance, a Healthy Urban Development Unit (HUDU) Healthy Urban Planning Checklist has been completed and is attached in **Appendix A**.

APPENDICES

Appendix A

Healthy Urban Planning Checklist

Appendix B

NHS Choices Search Results

Appendix A

Healthy Urban Planning Checklist

Theme 1: Healthy Housing

Issue	Key questions	Yes /No / Not relevant Comment	Policy requirements and standards	Why is it important
a. Healthy design	Does the proposal meet all the standards for daylight, sound insulation, private space and accessible and adaptable dwellings?	<p>Daylight: Daylight studies have formed part of the design process applying BRE and British Standard guidance to demonstrate acceptable internal daylight levels. Please refer to the Internal Daylight Report produced by SRE Ltd (September 2021) for further detail.</p> <p>Sound insulation: Dwellings are aiming to achieve airborne sound insulation values that will improve upon the performance standards outlined within the Building Regulations Part E standards.</p> <p>Accessible and adaptable dwellings: 90% of the new dwellings will be designed and built to Building Regulations Approved Document M4(2) standards, with 10% to Part M4(3).</p>	<p>London Plan Policy 5.2 Minimising carbon dioxide emissions and Housing SPG Standard 35: zero carbon residential buildings from 2016 and non-domestic buildings from 2019.</p> <p>Housing SPG Standard 29 on dual aspect and Standard 32 on daylight and sunlight.</p> <p>Housing SPG Standard 4 on communal open space, supported by London Plan Policy 2.18, Standards 1 and 2 on defining good places, and Standard 3 on public open space.</p> <p>Housing SPG Standards 26 and 27 on minimum provision of private (amenity) open space.</p> <p>London Plan Policy 3.8 Housing choice and Housing SPG Standard 11 on access require 90% of new homes meet Building Regulation M4(2) 'accessible and adaptable dwellings'.</p> <p>Sound insulation and noise - London Plan Policy 7.15 and Housing SPG Standard 30 on noise.</p> <p>Housing SPG Standards 8 and 9 on entrance and approach.</p>	<p>Satisfying these standards can help meet carbon dioxide emissions targets.</p> <p>Good daylight can improve the quality of life and reduce the need for energy to light the home.</p> <p>The provision of an inclusive outdoor space, which is at least partially private, can improve the quality of life.</p> <p>Improved sound insulation can reduce noise disturbance and complaints from neighbours.</p>

Theme 1: Healthy Housing

Issue	Key questions	Yes /No / Not relevant Comment	Policy requirements and standards	Why is it important
b. Accessible housing	<p>Does the proposal provide accessible homes for older or disabled people?</p> <p>Does the proposal ensure that every non-ground floor dwelling is accessible by a lift that can accommodate an ambulance trolley?</p>	<p>Yes: 10% of the new dwellings will be designed and built to Building Regulations Approved Document M4(3) standards.</p> <p>Yes: An appropriately sized lift will be provided.</p>	<p>London Plan Policy 3.8 and Housing SPG Standard 11 on access require 10 per cent all new housing to be designed to be wheelchair accessible or easily adaptable such that they meet Building Regulation M4(3) 'wheelchair user dwellings'.</p> <p>Housing SPG Standards 15 and 16 relate to the provision of lifts. Good practice standard - the provision of an ISO standard 13 person lift in a configuration which can accommodate a trolley bed (see Department of Health Technical Memorandum 08-02: Lifts).</p>	<p>Accessible and easily adaptable homes can meet the changing needs of current and future occupants.</p> <p>One of the main methods of transportation of immobile patients is by trolley bed. Non-ground floor dwellings should be accessible by a lift that can accommodate an ambulance trolley.</p>
c. Healthy living	<p>Does the proposal provide dwellings with adequate internal space, including sufficient storage space and separate kitchen and living spaces?</p> <p>Does the proposal encourage the use of stairs by ensuring that they are well located, attractive and welcoming?</p>	<p>Yes: Dwellings are designed in accordance with London Plan space standards.</p> <p>Yes: Communal stairs will be easily accessible, attractive, welcoming and adequately lit to encourage residents to use them.</p>	<p>London Plan Policy 3.5 (Table 3.3 - minimum space standards for new dwellings) and Housing SPG Standard 24 on dwelling space standards.</p> <p>Housing SPG Standard 25 - dwellings should accommodate the furniture, access and activity space requirements relating to the declared level of occupancy.</p> <p>Also, Housing SPG Standard 28 on privacy and Standard 31 on ceiling heights.</p> <p>Housing SPG Standards 12 to 16 relate to shared internal circulation, cores and lifts.</p>	<p>Sufficient space is needed to allow for the preparation and consumption of food away from the living room to avoid the 'TV dinner' effect.</p> <p>Rather than having lifts at the front and staircases at the back of buildings, it is preferable to have them located at the front to encourage people that can to use them.</p>

Theme 1: Healthy Housing

Issue	Key questions	Yes /No / Not relevant Comment	Policy requirements and standards	Why is it important
d. Housing mix and affordability	Does the proposal provide affordable family sized homes?	Not considered relevant to the size of the site. The proposed development will provide units ranging from one-bedroom (1 person), one-bedroom (2 person), two-bedroom (3 person) and two-bedroom (4 person).	<p>London Plan Policy 3.8 Housing choice.</p> <p>London Plan Policy 3.11 Affordable housing targets seeks to maximise affordable housing provision and to ensure an average of at least 17,000 more affordable homes per year in London over the term of the London Plan. 60% of the affordable housing provision should be for social and affordable rent and 40% for intermediate rent or sale.</p> <p>The Mayor's Homes for Londoners: Affordable Homes Programme 2016-21 is a £3bn fund to help start building at least 90,000 affordable homes by 2021.</p>	<p>The provision of affordable housing can create mixed and socially inclusive communities. The provision of affordable family sized homes can have a positive impact on the physical and mental health of those living in overcrowded, unsuitable or temporary accommodation.</p> <p>Both affordable and private housing should be designed to a high standard ('tenure blind').</p>

Theme 2: Active Travel

Issue	Key questions	Yes / No / Not relevant Comment	Policy requirements and standards	Why is it important
a. Promoting walking and cycling	Does the proposal promote cycling and walking through measures in a travel plan, including adequate cycle parking and cycle storage?	Yes: The proposed development will provide a minimum of 30 long-term cycle storage spaces within secure cycle stores located to the rear of Block A and within Block B. A total of 6 short-term cycle spaces will be provided, with two 'Sheffield' style cycle hoops between Blocks A and B (providing 4 spaces) and a single Sheffield style hoop providing a further 2 short-term cycle spaces to the front of the commercial unit in Block A.	London Plan Policy 6.3 (C) Travel plans London Plan Policy 6.9 Cycling . London Plan Policy 6.10 Walking . London Plan - Parking Addendum to Chapter 6 on cycle parking: Table 6.3 Cycle parking minimum standards . Housing SPG Standards 20 and 21 on cycle storage.	A travel plan can address the environmental and health impacts of development by promoting sustainable transport, including walking and cycling. Cycle parking and storage in residential dwellings can encourage cycle participation.
b. Safety	Does the proposal include traffic management and calming measures and safe and well lit pedestrian and cycle crossings and routes?	N/A: The scale of the development is such that such measures are not relevant.	London Plan Policy 6.9 Cycling . London Plan Policy 6.10 Walking .	Traffic management and calming measures and safe crossings can reduce road accidents involving cyclists and pedestrians and increase levels of walking and cycling.
c. Connectivity	Does the proposal connect public realm and internal routes to local and strategic cycle and walking networks and public transport?	N/A: The scale of the development is such that such measures are not relevant. The site's location is sustainable with good access to local walking/cycling routes and public transport networks such as rail (Strawberry Hill and Teddington railway stations) and buses.	London Plan Policy 6.9 Cycling - Map 6.2 Cycle superhighways . London Plan Policy 6.10 Walking - Map 6.3 Walk London Network . Green Infrastructure: The All London Green Grid SPG (March 2012) . Transport for London Legible London . Transport for London Bus Service Planning Guidelines .	Developments should prioritise the access needs of cyclists and pedestrians. Routes should be safe, direct and convenient and barriers and gated communities should be avoided. Developments should be accessible by public transport.

Theme 2: Active Travel

Issue	Key questions	Yes / No / Not relevant Comment	Policy requirements and standards	Why is it important
d. Minimising car use	Does the proposal seek to minimise car use by reducing car parking provision, supported by the controlled parking zones, car free development and car clubs?	Yes: The site is within close proximity to public transport links. Secure cycle storage spaces are being provided and the development is car free, apart from 1 disabled space.	<p>London Plan Policy 6.13 Parking - Table 6.2 Car parking standards (Parking addendum to chapter 6).</p> <p>Housing SPG Standards 17 to 19 on car parking provision.</p>	<p>Space for pedestrians and cyclists should be given priority over commercial and private vehicles. Maximum car parking levels allows for provision to be reduced as far as practicable.</p> <p>Car clubs can be effective in reducing car use and parking demand at new residential developments.</p>

Theme 3: Healthy Environment

Issue	Key questions	Yes / No / Not relevant Comment	Policy requirements and standards	Why is it important
a. Construction	Does the proposal minimise construction impacts such as dust, noise, vibration and odours?	<p>Yes: Construction site impacts will be minimised through site monitoring and adopting best practices to reduce air, noise, vibration and odours.</p> <p>The site will also be registered with the Considerate Constructors Scheme.</p>	<p>London Plan Policy 5.3 Sustainable design and construction.</p> <p>London Plan Policy 5.18 Construction, excavation and demolition waste.</p> <p>The Control of Dust and Emissions During Construction and Demolition SPG (July 2014).</p> <p>Housing SPG Standard 34 on environmental performance.</p>	<p>Construction sites can have a negative impact on an area and can be perceived to be unsafe. Construction activity can cause disturbance and stress, which can have an adverse effect on physical and mental health.</p> <p>Mechanisms should be put in place to control hours of construction, vehicle movements and pollution.</p> <p>Community engagement before and during construction can help alleviate fears and concerns.</p>
b. Air quality	Does the proposal minimise air pollution caused by traffic and energy facilities?	<p>Air pollution produced by traffic and energy facilities has not been assessed.</p> <p>Mitigation measures such as cycle parking and being a car free development will aim to minimise air pollution.</p>	<p>London Plan Policy 7.14 Improving air quality.</p> <p>At least 'air quality neutral' - Housing SPG Standard 33 on air quality.</p> <p>London Plan Policy 5.10 Urban greening.</p> <p>London Plan Policy 5.3 Sustainable design and construction.</p>	<p>The long-term impact of poor air quality has been linked to life-shortening lung and heart conditions, cancer and diabetes.</p>

Theme 3: Healthy Environment

Issue	Key questions	Yes / No / Not relevant Comment	Policy requirements and standards	Why is it important
c. Noise	Does the proposal minimise the impact of noise caused by traffic and commercial uses through insulation, site layout and landscaping?	Yes: Dwellings will be designed to achieve airborne sound insulation values that improve upon Building Regulation Part E standards. The soft landscaping around the site will also create a more pleasant acoustic environment.	<p>London Plan Policy 7.15 Reducing and managing noise, improving and enhancing the acoustic environment and promoting appropriate soundscapes.</p> <p>Limit the transmission of noise to sound sensitive rooms - Housing SPG Standard 30 on noise.</p>	Reducing noise pollution helps improve the quality of urban life.
d. Open space	<p>Does the proposal retain or replace existing open space and in areas of deficiency, provide new open or natural space, or improve access to existing spaces?</p> <p>Does the proposal set out how new open space will be managed and maintained?</p>	The proposed development includes private open space in the form of private balconies and gardens.	<p>London Plan Policy 7.1 Lifetime neighbourhoods.</p> <p>London Plan Policy 7.18 Protecting open space and addressing deficiency, Table 7.2 Public open space categorisation.</p> <p>London Plan Policy 7.19 Biodiversity and access to nature.</p> <p>Housing SPG Standards 3 and 4 on communal and public open space.</p>	<p>Access to open space has a positive impact on health and wellbeing. Living close to areas of green space, parks, woodland and other open space can improve physical and mental health regardless of social background.</p> <p>To maintain the quality and usability of open spaces an effective management and maintenance regime should be put in place.</p>

Theme 3: Healthy Environment

Issue	Key questions	Yes / No / Not relevant Comment	Policy requirements and standards	Why is it important
e. Play space	Does the proposal provide a range of play spaces for children and young people?	The proposed development is in close proximity to Strawberry Woods Play Area and Bushy Park, which has a dedicated playground.	<p>London Plan Policy 3.6 Children and young people’s play and informal recreation facilities.</p> <p>Shaping Neighbourhoods: Play and Informal Recreation SPG (Sept 2012) - quantity Benchmark Standard of a minimum of 10 square metres per child regardless of age (4.24) and accessibility to play space Benchmark Standard (Table 4.4).</p> <p>Housing SPG Standard 5 on play space.</p>	<p>Regular participation in physical activity among children and young people is vital for healthy growth and development.</p> <p>The location of play spaces should be accessible by walking and cycling routes that are suitable for children to use.</p>
f. Biodiversity	Does the proposal contribute to nature conservation and biodiversity?	Yes: The site is currently considered to be brownfield land. The proposal will look to enhance the ecological value through the provision of private amenity space and surrounding landscaping.	<p>London Plan Policy 7.19 Biodiversity and access to nature. Table 7.3 - London regional Biodiversity Action Plan habitat targets for 2020.</p> <p>Housing SPG Standard 40 on ecology.</p>	<p>Access to nature and biodiversity contributes to mental health and wellbeing.</p> <p>New development can improve existing, or create new, habitats or use design solutions (green roofs, living walls) to enhance biodiversity.</p>
g. Local food growing	Does the proposal provide opportunities for food growing, for example by providing allotments, private and community gardens and green roofs?	No: Site not of a scale whereby provision of community food growing is considered feasible however, private amenity areas are provided.	<p>London Plan Policy 5.10 Urban greening.</p> <p>London Plan Policy 7.22 Land for food.</p> <p>London Plan Policy 5.11 Green roofs and development site environs.</p>	<p>Providing space for local food growing helps promote more active lifestyles, better diets and social benefits.</p>

Theme 3: Healthy Environment

Issue	Key questions	Yes / No / Not relevant Comment	Policy requirements and standards	Why is it important
h. Flood risk	Does the proposal reduce surface water flood risk through sustainable urban drainage techniques, including storing rainwater, use of permeable surfaces and green roofs?	Yes: The site is located in Flood Zone 1 (low risk). SuDs to be employed where practical, including permeable paving.	<p>London Plan Policy 5.3 Sustainable design and construction.</p> <p>London Plan Policy 5.11 Green roofs and development site environs.</p> <p>London Plan Policy 5.13 Sustainable drainage.</p> <p>Flooding and drainage - Housing SPG Standards 38 and 39.</p>	<p>Flooding can result in risks to physical and mental health. The stress of being flooded and cleaning up can have a significant impact on mental health and wellbeing.</p> <p>It is likely that increasing development densities and building coverage coupled with more frequent extreme weather events will increase urban flood risk.</p>
i. Overheating	Does the design of buildings and spaces avoid internal and external overheating, through use of passive cooling techniques and urban greening?	Overheating Analysis has been carried out by SRE Ltd (September 2021). The units will incorporate a number of active and passive measures to reduce the risk of overheating and eliminate the need for active cooling. These include highly efficient building fabric, local shading features provided by the building form or internal blinds, low g-value glazing and Mechanical Ventilation with Heat Recovery (MVHR). Overheating risk has been assessed in accordance with CIBSE TM59 and TM52 and the results of the assessment indicate that under the specified weather file, the assessed 'worse case' habitable spaces in the top floor units pass the assessment criteria. Please refer to the report for further detail.	<p>London Plan Policy 5.3 Sustainable design and construction.</p> <p>London Plan Policy 5.9 Overheating and cooling.</p> <p>London Plan Policy 5.10 Urban greening.</p> <p>London Plan Policy 5.11 Green roofs and development site environs.</p> <p>Overheating - Housing SPG Standards 36.</p>	<p>Climate change with higher average summer temperatures is likely to intensify the urban heat island effect and result in discomfort and excess summer deaths amongst vulnerable people.</p> <p>Urban greening - tree planting, green roofs and walls and soft landscaping can help prevent summer overheating.</p>

Theme 4: Vibrant Neighbourhoods

Issue	Key questions	Yes / No / Not relevant Comment	Policy requirements and standards	Why is it important
a. Health services	Has the impact on healthcare services been addressed?	Yes: The scale of the development is such that there will be minimal impact on healthcare services. NHS Choices search results included in Appendix B.	London Plan Policy 3.17 Health and social care facilities. NHS London Healthy Urban Development Unit Planning Contributions Tool (the HUDU Model). Social Infrastructure SPG (2015).	Poor access and quality of healthcare services exacerbates ill health, making effective treatment more difficult. The provision of support services and advice on healthy living can prevent ill health.
b. Education	Has the impact on primary, secondary and post-19 education been addressed?	Yes: The site is well served by nearby educational establishments.	London Plan Policy 3.18 Education facilities.	Access to a range of primary, secondary and post-19 education improves self-esteem, job opportunities and earning capacity.
c. Access to social infrastructure	Does the proposal contribute to new social infrastructure provision that is accessible, affordable and timely? Have opportunities for multi-use and the co-location of services been explored?	It is not proposed to provide any social infrastructure on the site which is considered acceptable given the scale of the proposed development.	London Plan Policy 3.16 Protection and enhancement of social infrastructure. London Plan Policy 7.1 Lifetime neighbourhoods. Social Infrastructure SPG (2015).	Good access to local services is a key element of a lifetime neighbourhood and additional services will be required to support new development. Not doing so will place pressure on existing services. Future social infrastructure requirements are set out in Borough infrastructure plans and developments will be expected to contribute towards additional services and facilities.

Theme 4: Vibrant Neighbourhoods

Issue	Key questions	Yes / No / Not relevant Comment	Policy requirements and standards	Why is it important
d. Local employment and healthy workplaces	<p>Does the proposal include commercial uses and provide opportunities for local employment and training, including temporary construction and permanent 'end-use' jobs?</p> <p>Does the proposal promote the health and wellbeing of future employees by achieving BREEAM health and wellbeing credits?</p>	<p>Not considered relevant to a development of this size.</p> <p>Construction process will create employment opportunities and supply opportunities to local businesses.</p> <p>Opportunities for local work force to receive training during site construction.</p>	<p>London Plan Policy 4.12 Improving opportunities for all and London Plan Policy 8.2 Planning obligations.</p> <p>London Plan Policy 7.1 Lifetime neighbourhoods.</p> <p>Workplace environment - BREEAM health and wellbeing credits.</p>	<p>Unemployment generally leads to poverty, illness and a reduction in personal and social esteem. Employment can aid recovery from physical and mental illnesses.</p> <p>Creating healthier workplaces can reduce ill health and employee sickness absence.</p>
e. Access to local food shops	<p>Does the proposal provide opportunities for local food shops?</p> <p>Does the proposal avoid an over concentration or clustering of hot food takeaways in the local area?</p>	<p>The development does not include any retail outlets such as hot food takeaways.</p>	<p>London Plan Policy 4.7 Retail and town centre development.</p> <p>London Plan Policy 4.8 Supporting a successful and diverse retail sector.</p> <p>London Plan Policy 4.9 Small shops.</p> <p>London Plan Policy 7.1 Lifetime neighbourhoods.</p>	<p>A proliferation of hot food takeaways and other outlets selling fast food can harm the vitality and viability of local centres and undermine attempts to promote the consumption of healthy food, particularly in areas close to schools.</p>

Theme 4: Vibrant Neighbourhoods

Issue	Key questions	Yes / No / Not relevant Comment	Policy requirements and standards	Why is it important
f. Public realm	<p>Does the design of the public realm maximise opportunities for social interaction and connect the proposal with neighbouring communities?</p> <p>Does the proposal allow people with mobility problems or a disability to access buildings and places?</p>	<p>The scale of the development is such that it does not include any public realm. It does however compliment the character of the area through sympathetic design and improvements to street scene appearance therefore having a positive impact on people's sense of place, security and belonging. As the site is currently occupied by vacant buildings and dilapidated sheds at the rear yard, the new development will inject a new lease of life into the nearby area.</p> <p>90% of the new dwellings will be designed and built to Building Regulations Approved Document M4 (2) standards, with 10% to Part M4(3).</p>	<p>London Plan Policy 7.1 Lifetime neighbourhoods.</p> <p>London Plan Policy 7.2 An inclusive environment.</p> <p>London Plan Policy 7.5 Public realm. Shaping Neighbourhoods. Accessible London: Achieving and Inclusive Environment SPG (Oct 2014).</p> <p>Housing SPG Standard 10 on active frontages.</p>	<p>The public realm has an important role to play in promoting walking and cycling, activity and social interaction. It also affects people's sense of place, security and belonging. It is a key component of a lifetime neighbourhood.</p> <p>Shelter, landscaping, street lighting and seating can make spaces attractive and inviting.</p> <p>Implementing inclusive design principles effectively creates an accessible environment, in particular for disabled and older people.</p>

Appendix B

NHS Choices Search Results

GPs near TW11 8LX

0.3 miles away

[York Medical Practice, St Mary's College](#) (Link: [/services/gp-surgery/york-medical-practice-st-marys-college/XH84012001](#))

Medical Centre, St Mary's College, Waldegrave Road, Strawberry Hill, Twickenham, Middlesex, TW1 4SX
020 8240 4100

[Map and directions](#) (Link: <http://maps.google.com/maps/dir/?api=1&origin=51.43255226000296,-0.33878521234196324&destination=Medical+Centre%2c+St+Mary%27s+College%2c+>

0.6 miles away

[Park Road Surgery \(Dr Patton & Partners\)](#) (Link: [/services/gp-surgery/park-road-surgery-dr-patton-and-partners/XH84002](#))

37 Park Road, Teddington, Middlesex, TW11 0AU
020 8977 5481

[Map and directions](#) (Link: <http://maps.google.com/maps/dir/?api=1&origin=51.43255226000296,-0.33878521234196324&destination=37+Park+Road%2c+Teddington%2c+Middlesex%2>

0.6 miles away

[Thameside Medical Practice - Childs & Partners](#) (Link: [/services/gp-surgery/thameside-medical-practice-childs-and-partners/XH84059](#))

Thames House, 180-194 High Street, Teddington, Middlesex, TW11 8HU
020 8614 4930

[Map and directions](#) (Link: <http://maps.google.com/maps/dir/?api=1&origin=51.43255226000296,-0.33878521234196324&destination=Thames+House%2c+180-194+High+Street%2c+Teddington%2c+Middlesex%2c+TW11+8HU&t=m>)

0.8 miles away

[Hampton Hill Medical Centre](#) (Link: [/services/gp-surgery/hampton-hill-medical-centre/XH84623](#))

94-102 High Street, Hampton Hill, Hampton, Middlesex, TW12 1NY
020 8977 0043

[Map and directions](#) (Link: <http://maps.google.com/maps/dir/?api=1&origin=51.43255226000296,-0.33878521234196324&destination=94-102+High+Street%2c+Hampton+Hill%2c+Hampton%2c+Middlesex%2c+TW12+1NY&t=m>)

0.8 miles away

[Sood \(The Green & Fir Road\)](#) (Link: [/services/gp-surgery/sood-the-green-and-fir-road/XH84044](#))

1B The Green, Twickenham, Middlesex, TW2 5TU
020 8894 6870

[Map and directions](#) (Link: <http://maps.google.com/maps/dir/?api=1&origin=51.43255226000296,-0.33878521234196324&destination=1B+The+Green%2c+Twickenham%2c+Middlesex%2>

0.9 miles away

[Cross Deep Surgery](/services/gp-surgery/cross-deep-surgery/XH84039) (Link: /services/gp-surgery/cross-deep-surgery/XH84039)

4 Cross Deep, Twickenham, Middlesex, TW1 4QP
020 8892 8124

[Map and directions](http://maps.google.com/maps/dir/?api=1&origin=51.43255226000296,-0.33878521234196324&destination=4+Cross+Deep%2c+Twickenham%2c+Middlesex%2c+TW1+4QP) (Link: <http://maps.google.com/maps/dir/?api=1&origin=51.43255226000296,-0.33878521234196324&destination=4+Cross+Deep%2c+Twickenham%2c+Middlesex%2c+TW1+4QP>)

1 miles away

[Sarajlic \(Staines Road\)](/services/gp-surgery/sarajlic-staines-road/XH84057) (Link: /services/gp-surgery/sarajlic-staines-road/XH84057)

Staines Road Medical Centre, 325 Staines Road, Twickenham, Middlesex, TW2 5AU
020 8894 2722

[Map and directions](http://maps.google.com/maps/dir/?api=1&origin=51.43255226000296,-0.33878521234196324&destination=Staines+Road+Medical+Centre%2c+325+Staines+Road%2c+Twickenham%2c+Middlesex%2c+TW2+5AU) (Link: <http://maps.google.com/maps/dir/?api=1&origin=51.43255226000296,-0.33878521234196324&destination=Staines+Road+Medical+Centre%2c+325+Staines+Road%2c+Twickenham%2c+Middlesex%2c+TW2+5AU>)

1.1 miles away

[The Acorn Group Practice - Jackson](/services/gp-surgery/the-acorn-group-practice-jackson/XH84007) (Link: /services/gp-surgery/the-acorn-group-practice-jackson/XH84007)

29-35 Holly Road, Twickenham, Middlesex, TW1 4EA
020 8891 0073

[Map and directions](http://maps.google.com/maps/dir/?api=1&origin=51.43255226000296,-0.33878521234196324&destination=29-35+Holly+Road%2c+Twickenham%2c+Middlesex%2c+TW1+4EA&t=m) (Link: <http://maps.google.com/maps/dir/?api=1&origin=51.43255226000296,-0.33878521234196324&destination=29-35+Holly+Road%2c+Twickenham%2c+Middlesex%2c+TW1+4EA&t=m>)

1.1 miles away

[Lock Road Surgery](/services/gp-surgery/lock-road-surgery/XH84017001) (Link: /services/gp-surgery/lock-road-surgery/XH84017001)

55A Lock Road, Ham, Richmond, Surrey, TW10 7LJ
020 8940 1400

[Map and directions](http://maps.google.com/maps/dir/?api=1&origin=51.43255226000296,-0.33878521234196324&destination=55A+Lock+Road%2c+Ham%2c+Richmond%2c+Surrey%2c+TW10+7LJ) (Link: <http://maps.google.com/maps/dir/?api=1&origin=51.43255226000296,-0.33878521234196324&destination=55A+Lock+Road%2c+Ham%2c+Richmond%2c+Surrey%2c+TW10+7LJ>)

1.3 miles away

[The York Medical Practice](/services/gp-surgery/the-york-medical-practice/XH84012) (Link: /services/gp-surgery/the-york-medical-practice/XH84012)

St. Johns Health Centre, Twickenham, Middlesex, TW1 3PA
020 8744 0220

[Map and directions](http://maps.google.com/maps/dir/?api=1&origin=51.43255226000296,-0.33878521234196324&destination=St.+Johns+Health+Centre%2c+Twickenham%2c+Middlesex%2c+TW1+3PA) (Link: <http://maps.google.com/maps/dir/?api=1&origin=51.43255226000296,-0.33878521234196324&destination=St.+Johns+Health+Centre%2c+Twickenham%2c+Middlesex%2c+TW1+3PA>)

1.3 miles away

[Oak Lane Medical Center-Kudra & Sablok](/services/gp-surgery/oak-lane-medical-center-kudra-and-sablok/XH84625001) (Link: /services/gp-surgery/oak-lane-medical-center-kudra-and-sablok/XH84625001)

6 Oak Lane, Twickenham, Middlesex, TW1 3PA
020 8744 0094

[Map and directions](http://maps.google.com/maps/dir/?api=1&origin=51.43255226000296,-0.33878521234196324&destination=6+Oak+Lane%2c+Twickenham%2c+Middlesex%2c+TW1+3PA) (Link: <http://maps.google.com/maps/dir/?api=1&origin=51.43255226000296,-0.33878521234196324&destination=6+Oak+Lane%2c+Twickenham%2c+Middlesex%2c+TW1+3PA>)

1.4 miles away

[Crane Park Surgery](/services/gp-surgery/crane-park-surgery/XH84630) (Link: /services/gp-surgery/crane-park-surgery/XH84630)

Whitton Corner Health And Social Care Centre, Percy Road, Twickenham, Middlesex, TW2 6JL
020 3458 5300

[Map and directions](http://maps.google.com/maps/dir/?api=1&origin=51.43255226000296,-0.33878521234196324&destination=Whitton+Corner+Health+And+Social+Care+Centre%2c+Percy+Road%2c+Twickenham%2c+Middlesex%2c+TW2+6JL) (Link: <http://maps.google.com/maps/dir/?api=1&origin=51.43255226000296,-0.33878521234196324&destination=Whitton+Corner+Health+And+Social+Care+Centre%2c+Percy+Road%2c+Twickenham%2c+Middlesex%2c+TW2+6JL>)

1.4 miles away

[Jubilee Surgery - Boohan](#) (Link: </services/gp-surgery/jubilee-surgery-boohan/XH84031>)

First Floor, Whitton Corner H&SCC, Percy Road, Twickenham, Middlesex, TW2 6JL
020 3458 5400

[Map and directions](#) (Link: <http://maps.google.com/maps/dir/?api=1&origin=51.43255226000296,-0.33878521234196324&destination=First+Floor%2c+Whitton+Corner+H%26SCC%2c+P>)

1.4 miles away

[Broad Lane Surgery](#) (Link: </services/gp-surgery/broad-lane-surgery/XH84018>)

71 Broad Lane, Hampton, Middlesex, TW12 3AX
020 8979 5406

[Map and directions](#) (Link: <http://maps.google.com/maps/dir/?api=1&origin=51.43255226000296,-0.33878521234196324&destination=71+Broad+Lane%2c+Hampton%2c+Middlesex%2c>)

1.5 miles away

[Woodlawn Medical Centre - Kudra](#) (Link: </services/gp-surgery/woodlawn-medical-centre-kudra/XH84625>)

19 Powdermill Lane, Whitton, Twickenham, Middlesex, TW2 6EE
020 8894 4242

[Map and directions](#) (Link: <http://maps.google.com/maps/dir/?api=1&origin=51.43255226000296,-0.33878521234196324&destination=19+Powdermill+Lane%2c+Whitton%2c+Twickenham%2c>)

1.6 miles away

[Twickenham Park Surgery](#) (Link: </services/gp-surgery/twickenham-park-surgery/XE85045>)

192 Twickenham Road, Hanworth, Feltham, Middlesex, TW13 6HD
020 8481 7989

[Map and directions](#) (Link: <http://maps.google.com/maps/dir/?api=1&origin=51.43255226000296,-0.33878521234196324&destination=192+Twickenham+Road%2c+Hanworth%2c+Feltham%2c>)

1.6 miles away

[O'Flynn - Hampton Wick](#) (Link: </services/gp-surgery/oflynn-hampton-wick/XH84032>)

26 Upper Teddington Road, Hampton Wick, Kingston Upon Thames, Surrey, KT1 4DY
020 8977 2638

[Map and directions](#) (Link: <http://maps.google.com/maps/dir/?api=1&origin=51.43255226000296,-0.33878521234196324&destination=26+Upper+Teddington+Road%2c+Hampton+Wick%2c+Kingston+Upon+Thames%2c>)

1.7 miles away

[ST ALBANS MEDICAL CENTRE](#) (Link: </services/gp-surgery/st-albans-medical-centre/XH84033>)

212 Richmond Road, Kingston Upon Thames, Surrey, KT2 5HF
020 8546 3136

[Map and directions](#) (Link: <http://maps.google.com/maps/dir/?api=1&origin=51.43255226000296,-0.33878521234196324&destination=212+Richmond+Road%2c+Kingston+Upon+Thames%2c+Surrey%2c>)

1.7 miles away

[Churchill Medical Centre](#) (Link: </services/gp-surgery/churchill-medical-centre/XH84027002>)

164 Tudor Drive, Kingston upon Thames, Surrey, KT2 5QG
020 3727 2230

[Map and directions](http://maps.google.com/maps/dir/?api=1&origin=51.43255226000296,-0.33878521234196324&destination=164+Tudor+Drive%2c+Kingston+upon+Thames%2) (Link: <http://maps.google.com/maps/dir/?api=1&origin=51.43255226000296,-0.33878521234196324&destination=164+Tudor+Drive%2c+Kingston+upon+Thames%2>)

1.8 miles away

[Hampton Medical Centre](/services/gp-surgery/hampton-medical-centre/XH84040) (Link: </services/gp-surgery/hampton-medical-centre/XH84040>)

Hampton Medical Centre, Lansdowne, 49A Priory Road, Hampton, Middlesex, TW12 2PB
020 8979 3306

[Map and directions](http://maps.google.com/maps/dir/?api=1&origin=51.43255226000296,-0.33878521234196324&destination=Hampton+Medical+Centre%2c+Lansdowne%2c+4) (Link: <http://maps.google.com/maps/dir/?api=1&origin=51.43255226000296,-0.33878521234196324&destination=Hampton+Medical+Centre%2c+Lansdowne%2c+4>)

1.9 miles away

[Twickenham Park Surgery - Johal](/services/gp-surgery/twickenham-park-surgery-johal/XH84048) (Link: </services/gp-surgery/twickenham-park-surgery-johal/XH84048>)

17 Rosslyn Road, Twickenham, Middlesex, TW1 2AR
020 8892 1991

[Map and directions](http://maps.google.com/maps/dir/?api=1&origin=51.43255226000296,-0.33878521234196324&destination=17+Rosslyn+Road%2c+Twickenham%2c+Middlese) (Link: <http://maps.google.com/maps/dir/?api=1&origin=51.43255226000296,-0.33878521234196324&destination=17+Rosslyn+Road%2c+Twickenham%2c+Middlese>)

1.9 miles away

[Kingston Health Centre](/services/gp-surgery/kingston-health-centre/XH84061) (Link: </services/gp-surgery/kingston-health-centre/XH84061>)

10 Skerne Road, Kingston Upon Thames, Surrey, KT2 5AD
020 8549 4747

[Map and directions](http://maps.google.com/maps/dir/?api=1&origin=51.43255226000296,-0.33878521234196324&destination=10+Skerne+Road%2c+Kingston+Upon+Thames%2) (Link: <http://maps.google.com/maps/dir/?api=1&origin=51.43255226000296,-0.33878521234196324&destination=10+Skerne+Road%2c+Kingston+Upon+Thames%2>)

2 miles away

[St Margaret's Medical Practice](/services/gp-surgery/st-margarets-medical-practice/XE85007) (Link: </services/gp-surgery/st-margarets-medical-practice/XE85007>)

237 St Margarets Road, Twickenham, Middlesex, TW1 1NE
020 8892 1986

[Map and directions](http://maps.google.com/maps/dir/?api=1&origin=51.43255226000296,-0.33878521234196324&destination=237+St+Margarets+Road%2c+Twickenham%2c+M) (Link: <http://maps.google.com/maps/dir/?api=1&origin=51.43255226000296,-0.33878521234196324&destination=237+St+Margarets+Road%2c+Twickenham%2c+M>)

2.2 miles away

[Willow Practice](/services/gp-surgery/willow-practice/XE85600) (Link: </services/gp-surgery/willow-practice/XE85600>)

Maswell Park Health Centre, Hounslow Avenue, Hounslow, Middlesex, TW3 2DY
020 8630 3476

[Map and directions](http://maps.google.com/maps/dir/?api=1&origin=51.43255226000296,-0.33878521234196324&destination=Maswell+Park+Health+Centre%2c+Hounslow+Ave) (Link: <http://maps.google.com/maps/dir/?api=1&origin=51.43255226000296,-0.33878521234196324&destination=Maswell+Park+Health+Centre%2c+Hounslow+Ave>)

2.2 miles away

[Redwood Surgery](/services/gp-surgery/redwood-surgery/XE85113) (Link: </services/gp-surgery/redwood-surgery/XE85113>)

Maswell Park Health Centre, Hounslow Avenue, Hounslow, Middlesex, TW3 2DY
020 8630 3488

[Map and directions](http://maps.google.com/maps/dir/?api=1&origin=51.43255226000296,-0.33878521234196324&destination=Maswell+Park+Health+Centre%2c+Hounslow+Ave) (Link: <http://maps.google.com/maps/dir/?api=1&origin=51.43255226000296,-0.33878521234196324&destination=Maswell+Park+Health+Centre%2c+Hounslow+Ave>)

2.2 miles away

[Kingfisher Practice](/services/gp-surgery/kingfisher-practice/XE85060) (Link: </services/gp-surgery/kingfisher-practice/XE85060>)

Maswell Park Health Centre, Hounslow Avenue, Hounslow, Middlesex, TW3 2DY
020 8630 3482

[Map and directions](http://maps.google.com/maps/dir/?api=1&origin=51.43255226000296,-0.33878521234196324&destination=Maswell+Park+Health+Centre%2c+Hounslow+Ave) (Link: <http://maps.google.com/maps/dir/?api=1&origin=51.43255226000296,-0.33878521234196324&destination=Maswell+Park+Health+Centre%2c+Hounslow+Ave>)

2.2 miles away

[Vine Medical Centre](/services/gp-surgery/vine-medical-centre/XH81128) (Link: </services/gp-surgery/vine-medical-centre/XH81128>)

69 Pemberton Road, East Molesey, Surrey, KT8 9LJ
020 8783 0154

[Map and directions](http://maps.google.com/maps/dir/?api=1&origin=51.43255226000296,-0.33878521234196324&destination=69+Pemberton+Road%2c+East+Molesey%2c+Surrey) (Link: <http://maps.google.com/maps/dir/?api=1&origin=51.43255226000296,-0.33878521234196324&destination=69+Pemberton+Road%2c+East+Molesey%2c+Surrey>)

2.2 miles away

[Mount Medical Centre](/services/gp-surgery/mount-medical-centre/XE85035) (Link: </services/gp-surgery/mount-medical-centre/XE85035>)

7 Market Parade, Hampton Road West, Feltham, Middlesex, TW13 6AJ
020 8893 8699

[Map and directions](http://maps.google.com/maps/dir/?api=1&origin=51.43255226000296,-0.33878521234196324&destination=7+Market+Parade%2c+Hampton+Road+West%2c) (Link: <http://maps.google.com/maps/dir/?api=1&origin=51.43255226000296,-0.33878521234196324&destination=7+Market+Parade%2c+Hampton+Road+West%2c>)

2.2 miles away

[Canbury Medical Centre](/services/gp-surgery/canbury-medical-centre/XH84010) (Link: </services/gp-surgery/canbury-medical-centre/XH84010>)

1 Elm Road, Kingston Upon Thames, Surrey, KT2 6HR
020 8547 4270

[Map and directions](http://maps.google.com/maps/dir/?api=1&origin=51.43255226000296,-0.33878521234196324&destination=1+Elm+Road%2c+Kingston+Upon+Thames%2c+Surrey) (Link: <http://maps.google.com/maps/dir/?api=1&origin=51.43255226000296,-0.33878521234196324&destination=1+Elm+Road%2c+Kingston+Upon+Thames%2c+Surrey>)

2.2 miles away

[Little Park Surgery](/services/gp-surgery/little-park-surgery/XE85736) (Link: </services/gp-surgery/little-park-surgery/XE85736>)

281 Hounslow Road, Hanworth, Feltham, Middlesex, TW13 5JG
020 8894 6588

[Map and directions](http://maps.google.com/maps/dir/?api=1&origin=51.43255226000296,-0.33878521234196324&destination=281+Hounslow+Road%2c+Hanworth%2c+Feltham) (Link: <http://maps.google.com/maps/dir/?api=1&origin=51.43255226000296,-0.33878521234196324&destination=281+Hounslow+Road%2c+Hanworth%2c+Feltham>)

2.2 miles away

[Fir Road Surgery](/services/gp-surgery/fir-road-surgery/XH84044001) (Link: </services/gp-surgery/fir-road-surgery/XH84044001>)

50 Fir Road, Feltham, Middlesex, TW13 6UJ
020 8898 0253

[Map and directions](http://maps.google.com/maps/dir/?api=1&origin=51.43255226000296,-0.33878521234196324&destination=50+Fir+Road%2c+Feltham%2c+Middlesex%2c+TV) (Link: <http://maps.google.com/maps/dir/?api=1&origin=51.43255226000296,-0.33878521234196324&destination=50+Fir+Road%2c+Feltham%2c+Middlesex%2c+TV>)

2.3 miles away

[Richmond Lock Surgery - Smith](/services/gp-surgery/richmond-lock-surgery-smith/XH84060) (Link: </services/gp-surgery/richmond-lock-surgery-smith/XH84060>)

300 St Margaret's Road, Twickenham, Middlesex, TW1 1PS
020 8892 2543

[Map and directions](http://maps.google.com/maps/dir/?api=1&origin=51.43255226000296,-0.33878521234196324&destination=300+St+Margaret%27s+Road%2c+Twickenham%2c) (Link: <http://maps.google.com/maps/dir/?api=1&origin=51.43255226000296,-0.33878521234196324&destination=300+St+Margaret%27s+Road%2c+Twickenham%2c>)

2.4 miles away

[The Vineyard Surgery](/services/gp-surgery/the-vineyard-surgery/XH84041) (Link: </services/gp-surgery/the-vineyard-surgery/XH84041>)

35 The Vineyard, Richmond, Surrey, TW10 6PP
020 8948 0404

[Map and directions](http://maps.google.com/maps/dir/?api=1&origin=51.43255226000296,-0.33878521234196324&destination=35+The+Vineyard%2c+Richmond%2c+Surrey%2c+) (Link: <http://maps.google.com/maps/dir/?api=1&origin=51.43255226000296,-0.33878521234196324&destination=35+The+Vineyard%2c+Richmond%2c+Surrey%2c+>)

2.5 miles away

[Fairhill Medical Practice](#) (Link: </services/gp-surgery/fairhill-medical-practice/XH84020001>)

14 Fairfield South, Kingston Upon Thames, Surrey, KT1 2UJ
020 8546 1771

[Map and directions](http://maps.google.com/maps/dir/?api=1&origin=51.43255226000296,-0.33878521234196324&destination=14+Fairfield+South%2c+Kingston+Upon+Thames%2c+) (Link: <http://maps.google.com/maps/dir/?api=1&origin=51.43255226000296,-0.33878521234196324&destination=14+Fairfield+South%2c+Kingston+Upon+Thames%2c+>)

2.5 miles away

[Argyle Health Isleworth](#) (Link: </services/gp-surgery/argyle-health-isleworth/XE85744>)

The Isleworth Centre, 146 Twickenham Road, Isleworth, Middlesex, TW7 7DJ
020 8630 3604

[Map and directions](http://maps.google.com/maps/dir/?api=1&origin=51.43255226000296,-0.33878521234196324&destination=The+Isleworth+Centre%2c+146+Twickenham+Road%2c+Isleworth%2c+Middlesex%2c+) (Link: <http://maps.google.com/maps/dir/?api=1&origin=51.43255226000296,-0.33878521234196324&destination=The+Isleworth+Centre%2c+146+Twickenham+Road%2c+Isleworth%2c+Middlesex%2c+>)

2.5 miles away

[The Paradise Road Practice](#) (Link: </services/gp-surgery/the-paradise-road-practice/XH84014>)

37 Paradise Road, Richmond, Surrey, TW9 1SA
020 8940 2423

[Map and directions](http://maps.google.com/maps/dir/?api=1&origin=51.43255226000296,-0.33878521234196324&destination=37+Paradise+Road%2c+Richmond%2c+Surrey%2c+) (Link: <http://maps.google.com/maps/dir/?api=1&origin=51.43255226000296,-0.33878521234196324&destination=37+Paradise+Road%2c+Richmond%2c+Surrey%2c+>)

2.5 miles away

[Fairhill Medical Practice](#) (Link: </services/gp-surgery/fairhill-medical-practice/XH84020002>)

The Health Centre, Kingston University, Penrhyn Road, Kingston Upon Thames, Surrey, KT1 2EE
020 8417 2204

[Map and directions](http://maps.google.com/maps/dir/?api=1&origin=51.43255226000296,-0.33878521234196324&destination=The+Health+Centre%2c+Kingston+University%2c+) (Link: <http://maps.google.com/maps/dir/?api=1&origin=51.43255226000296,-0.33878521234196324&destination=The+Health+Centre%2c+Kingston+University%2c+>)

2.6 miles away

[Churchill Medical Centre](#) (Link: </services/gp-surgery/churchill-medical-centre/XH84027>)

Clifton Road, Kingston upon Thames, Surrey, KT2 6PG
020 3727 2230

[Map and directions](http://maps.google.com/maps/dir/?api=1&origin=51.43255226000296,-0.33878521234196324&destination=Clifton+Road%2c+Kingston+upon+Thames%2c+Surrey%2c+) (Link: <http://maps.google.com/maps/dir/?api=1&origin=51.43255226000296,-0.33878521234196324&destination=Clifton+Road%2c+Kingston+upon+Thames%2c+Surrey%2c+>)

2.6 miles away

[Glenlyn Medical Centre](#) (Link: </services/gp-surgery/glenlyn-medical-centre/XH81078>)

115 Molesey Park Road, East Molesey, Surrey, KT8 0JX
020 8979 3253

[Map and directions](http://maps.google.com/maps/dir/?api=1&origin=51.43255226000296,-0.33878521234196324&destination=115+Molesey+Park+Road%2c+East+Molesey%2c+Surrey%2c+) (Link: <http://maps.google.com/maps/dir/?api=1&origin=51.43255226000296,-0.33878521234196324&destination=115+Molesey+Park+Road%2c+East+Molesey%2c+Surrey%2c+>)

2.6 miles away

[Parkshot Medical Practice](#) (Link: </services/gp-surgery/parkshot-medical-practice/XH84005>)

18 Parkshot, Richmond, Surrey, TW9 2RG
020 8948 4217

[Map and directions](http://maps.google.com/maps/dir/?api=1&origin=51.43255226000296,-0.33878521234196324&destination=18+Parkshot%2c+Richmond%2c+Surrey%2c+TW9) (Link: <http://maps.google.com/maps/dir/?api=1&origin=51.43255226000296,-0.33878521234196324&destination=18+Parkshot%2c+Richmond%2c+Surrey%2c+TW9>)

2.6 miles away

[Fairhill Medical Practice](/services/gp-surgery/fairhill-medical-practice/XH84020) (Link: </services/gp-surgery/fairhill-medical-practice/XH84020>)

81 Kingston Hill, Kingston Upon Thames, Surrey, KT2 7PX
020 8546 1407

[Map and directions](http://maps.google.com/maps/dir/?api=1&origin=51.43255226000296,-0.33878521234196324&destination=81+Kingston+Hill%2c+Kingston+Upon+Thames%2c+Surrey%2c+KT2+7PX) (Link: <http://maps.google.com/maps/dir/?api=1&origin=51.43255226000296,-0.33878521234196324&destination=81+Kingston+Hill%2c+Kingston+Upon+Thames%2c+Surrey%2c+KT2+7PX>)

2.8 miles away

[Cecil Road Surgery](/services/gp-surgery/cecil-road-surgery/XE85096001) (Link: </services/gp-surgery/cecil-road-surgery/XE85096001>)

Hounslow East, Middlesex, Hounslow, Middlesex, TW3 1NU
020 8572 2536

[Map and directions](http://maps.google.com/maps/dir/?api=1&origin=51.43255226000296,-0.33878521234196324&destination=Hounslow+East%2c+Middlesex%2c+Hounslow%2c+Middlesex%2c+TW3+1NU) (Link: <http://maps.google.com/maps/dir/?api=1&origin=51.43255226000296,-0.33878521234196324&destination=Hounslow+East%2c+Middlesex%2c+Hounslow%2c+Middlesex%2c+TW3+1NU>)

2.8 miles away

[Firstcare Practice](/services/gp-surgery/firstcare-practice/XE85062) (Link: </services/gp-surgery/firstcare-practice/XE85062>)

Blenheim Centre, Prince Regent Road, Hounslow, Middlesex, TW3 1NL
020 8630 1111

[Map and directions](http://maps.google.com/maps/dir/?api=1&origin=51.43255226000296,-0.33878521234196324&destination=Blenheim+Centre%2c+Prince+Regent+Road%2c+Hounslow%2c+Middlesex%2c+TW3+1NL) (Link: <http://maps.google.com/maps/dir/?api=1&origin=51.43255226000296,-0.33878521234196324&destination=Blenheim+Centre%2c+Prince+Regent+Road%2c+Hounslow%2c+Middlesex%2c+TW3+1NL>)

2.8 miles away

[The Green Practice](/services/gp-surgery/the-green-practice/XE85126) (Link: </services/gp-surgery/the-green-practice/XE85126>)

Hounslow Health Centre, 92 Bath Road, Hounslow, Middlesex, TW3 3LN
020 8630 1350

[Map and directions](http://maps.google.com/maps/dir/?api=1&origin=51.43255226000296,-0.33878521234196324&destination=Hounslow+Health+Centre%2c+92+Bath+Road%2c+Hounslow%2c+Middlesex%2c+TW3+3LN) (Link: <http://maps.google.com/maps/dir/?api=1&origin=51.43255226000296,-0.33878521234196324&destination=Hounslow+Health+Centre%2c+92+Bath+Road%2c+Hounslow%2c+Middlesex%2c+TW3+3LN>)

2.8 miles away

[Chestnut Practice](/services/gp-surgery/chestnut-practice/XE85059) (Link: </services/gp-surgery/chestnut-practice/XE85059>)

Heart Of Hounslow Centre For Health, 92 Bath Road, Hounslow, Middlesex, TW3 3EL
020 8630 1400

[Map and directions](http://maps.google.com/maps/dir/?api=1&origin=51.43255226000296,-0.33878521234196324&destination=Heart+Of+Hounslow+Centre+For+Health%2c+92+Bath+Road%2c+Hounslow%2c+Middlesex%2c+TW3+3EL) (Link: <http://maps.google.com/maps/dir/?api=1&origin=51.43255226000296,-0.33878521234196324&destination=Heart+Of+Hounslow+Centre+For+Health%2c+92+Bath+Road%2c+Hounslow%2c+Middlesex%2c+TW3+3EL>)

2.8 miles away

[Blue Wing Family Doctor Unit](/services/gp-surgery/blue-wing-family-doctor-unit/XE85058) (Link: </services/gp-surgery/blue-wing-family-doctor-unit/XE85058>)

92 Bath Road, Heart Of Hounslow Centre For Health, Hounslow, Middlesex, TW3 3EL
020 8630 1300

[Map and directions](http://maps.google.com/maps/dir/?api=1&origin=51.43255226000296,-0.33878521234196324&destination=92+Bath+Road%2c+Heart+Of+Hounslow+Centre+For+Health%2c+Hounslow%2c+Middlesex%2c+TW3+3EL) (Link: <http://maps.google.com/maps/dir/?api=1&origin=51.43255226000296,-0.33878521234196324&destination=92+Bath+Road%2c+Heart+Of+Hounslow+Centre+For+Health%2c+Hounslow%2c+Middlesex%2c+TW3+3EL>)

2.8 miles away

[HMC Health](/services/gp-surgery/hmc-health/XY02671) (Link: </services/gp-surgery/hmc-health/XY02671>)

1st Floor, 92 Bath Road, Hounslow, Middlesex, TW3 3LN
020 8104 0810

[Map and directions](http://maps.google.com/maps/dir/?api=1&origin=51.43255226000296,-0.33878521234196324&destination=1st+Floor%2c+92+Bath+Road%2c+Hounslow%2c+) (Link: <http://maps.google.com/maps/dir/?api=1&origin=51.43255226000296,-0.33878521234196324&destination=1st+Floor%2c+92+Bath+Road%2c+Hounslow%2c+>)

2.9 miles away

[Hudson \(Seymour House\)](/services/gp-surgery/hudson-seymour-house/XH84017) (Link: </services/gp-surgery/hudson-seymour-house/XH84017>)

154 Sheen Road, Richmond, Surrey, TW9 1UU
020 8940 2802

[Map and directions](http://maps.google.com/maps/dir/?api=1&origin=51.43255226000296,-0.33878521234196324&destination=154+Sheen+Road%2c+Richmond%2c+Surrey%2c+) (Link: <http://maps.google.com/maps/dir/?api=1&origin=51.43255226000296,-0.33878521234196324&destination=154+Sheen+Road%2c+Richmond%2c+Surrey%2c+>)

2.9 miles away

[Spring Grove Medical Practice](/services/gp-surgery/spring-grove-medical-practice/XE85750) (Link: </services/gp-surgery/spring-grove-medical-practice/XE85750>)

Thornbury Road, Isleworth, Middlesex, TW7 4HQ
020 8630 1058

[Map and directions](http://maps.google.com/maps/dir/?api=1&origin=51.43255226000296,-0.33878521234196324&destination=Thornbury+Road%2c+Isleworth%2c+Middlesex%2c+) (Link: <http://maps.google.com/maps/dir/?api=1&origin=51.43255226000296,-0.33878521234196324&destination=Thornbury+Road%2c+Isleworth%2c+Middlesex%2c+>)

2.9 miles away

[Thornbury Road Centre For Health](/services/gp-surgery/thornbury-road-centre-for-health/XE85001) (Link: </services/gp-surgery/thornbury-road-centre-for-health/XE85001>)

Thornbury Road, Isleworth, Middlesex, TW7 4HQ
020 8630 1036

[Map and directions](http://maps.google.com/maps/dir/?api=1&origin=51.43255226000296,-0.33878521234196324&destination=Thornbury+Road%2c+Isleworth%2c+Middlesex%2c+) (Link: <http://maps.google.com/maps/dir/?api=1&origin=51.43255226000296,-0.33878521234196324&destination=Thornbury+Road%2c+Isleworth%2c+Middlesex%2c+>)

Dentists near TW11 8LX

0.4 miles away

[Teddington Dental Practice](#) (Link: </services/dentist/teddington-dental-practice/XV002302>)

2 Gloucester Road, Teddington, London, TW11 0NU
020 8977 2911

[Map and directions](#) (Link: <http://maps.google.com/maps/dir/?api=1&origin=51.43255226000296,-0.33878521234196324&destination=2+Gloucester+Road%2c+Teddington%2c+London>)

0.4 miles away

[Banner, Paul](#) (Link: </services/dentist/banner-paul/XV002296>)

Dental Care Surgery, 1 Church Road, Teddington, TW11 8PF
020 8977 3746

[Map and directions](#) (Link: <http://maps.google.com/maps/dir/?api=1&origin=51.43255226000296,-0.33878521234196324&destination=Dental+Care+Surgery%2c+1+Church+Road%2c+Te>)

0.5 miles away

[Richmond Hill Orthodontics Limited](#) (Link: </services/dentist/richmond-hill-orthodontics-limited/XV142269>)

53 HIGH STREET, TEDDINGTON, TW11 8HD

[Map and directions](#) (Link: <http://maps.google.com/maps/dir/?api=1&origin=51.43255226000296,-0.33878521234196324&destination=53+HIGH+STREET%2c+TEDDINGTON%2c+TW11+8>)

0.5 miles away

[Richmond & Twickenham PCT](#) (Link: </services/dentist/richmond-and-twickenham-pct/XV009511>)

Teddington H & S C Centre, 18 Queens Road, Teddington, TW11 0LR
020 8614 5300

[Map and directions](#) (Link: <http://maps.google.com/maps/dir/?api=1&origin=51.43255226000296,-0.33878521234196324&destination=Teddington+H+%26+S+C+Centre%2c+18+Queens>)

0.6 miles away

[Thames Orthodontics](#) (Link: </services/dentist/thames-orthodontics/XV002307>)

Thames Orthodontics, 7 Alpha Road, Teddington, Middlesex, TW11 0QG
020 8977 7272

[Map and directions](#) (Link: <http://maps.google.com/maps/dir/?api=1&origin=51.43255226000296,-0.33878521234196324&destination=Thames+Orthodontics%2c+7+Alpha+Road%2c+Te>)

0.9 miles away

[Bupa Dental Care, Hampton Hill](#) (Link: </services/dentist/bupa-dental-care-hampton-hill/XV002257>)

Bupa Dental Care, 127-129 HIGH STREET, HAMPTON HILL, Surrey, TW12 1NJ
020 8941 9944

[Map and directions](http://maps.google.com/maps/dir/?api=1&origin=51.43255226000296,-0.33878521234196324&destination=Bupa+Dental+Care%2c+127-129+hIGH+STREET%2c+HAMPTON+HILL%2c+Surrey%2c+TW12+1NJ&t=m) (Link: <http://maps.google.com/maps/dir/?api=1&origin=51.43255226000296,-0.33878521234196324&destination=Bupa+Dental+Care%2c+127-129+hIGH+STREET%2c+HAMPTON+HILL%2c+Surrey%2c+TW12+1NJ&t=m>).

1.1 miles away

[Mrs K L Clarke](/services/dentist/mrs-k-l-clarke/XV002309) (Link: </services/dentist/mrs-k-l-clarke/XV002309>)

St Marks Orthodontic, 47 St Marks Road, Teddington, TW11 9DE
020 8977 3888

[Map and directions](http://maps.google.com/maps/dir/?api=1&origin=51.43255226000296,-0.33878521234196324&destination=St+Marks+Orthodontic%2c+47+St+Marks+Road%2c+Teddington+TW11+9DE&t=m) (Link: <http://maps.google.com/maps/dir/?api=1&origin=51.43255226000296,-0.33878521234196324&destination=St+Marks+Orthodontic%2c+47+St+Marks+Road%2c+Teddington+TW11+9DE&t=m>).

1.1 miles away

[Perfect Smile Surgery Limited](/services/dentist/perfect-smile-surgery-limited/XV012316) (Link: </services/dentist/perfect-smile-surgery-limited/XV012316>)

Perfect Smile Dental Surgery, 50 Ashburnham Road, Ham, Richmond, TW10 7NF
020 8948 4085

[Map and directions](http://maps.google.com/maps/dir/?api=1&origin=51.43255226000296,-0.33878521234196324&destination=Perfect+Smile+Dental+Surgery%2c+50+Ashburnham+Road%2c+Ham+Richmond+TW10+7NF&t=m) (Link: <http://maps.google.com/maps/dir/?api=1&origin=51.43255226000296,-0.33878521234196324&destination=Perfect+Smile+Dental+Surgery%2c+50+Ashburnham+Road%2c+Ham+Richmond+TW10+7NF&t=m>).

1.3 miles away

[Ham Dental Practice](/services/dentist/ham-dental-practice/XV002323) (Link: </services/dentist/ham-dental-practice/XV002323>)

Ham Dental Practice, 8 Dukes Avenue, Kingston-upon-Thames, KT2 5QY
020 8546 0326

[Map and directions](http://maps.google.com/maps/dir/?api=1&origin=51.43255226000296,-0.33878521234196324&destination=Ham+Dental+Practice%2c+8+Dukes+Avenue%2c+Kingston-upon-Thames%2c+KT2+5QY&t=m) (Link: <http://maps.google.com/maps/dir/?api=1&origin=51.43255226000296,-0.33878521234196324&destination=Ham+Dental+Practice%2c+8+Dukes+Avenue%2c+Kingston-upon-Thames%2c+KT2+5QY&t=m>).

1.3 miles away

[Eden, Jane](/services/dentist/eden-jane/XV009945) (Link: </services/dentist/eden-jane/XV009945>)

The Orthodontic Practice, St Johns Health Centre, Oak Lane, Twickenham, TW1 3PH
020 8891 8130

[Map and directions](http://maps.google.com/maps/dir/?api=1&origin=51.43255226000296,-0.33878521234196324&destination=The+Orthodontic+Practice%2c+St+Johns+Health+Centre%2c+Twickenham+TW1+3PH&t=m) (Link: <http://maps.google.com/maps/dir/?api=1&origin=51.43255226000296,-0.33878521234196324&destination=The+Orthodontic+Practice%2c+St+Johns+Health+Centre%2c+Twickenham+TW1+3PH&t=m>).

1.3 miles away

[Whitton Corner Dental Practice](/services/dentist/whitton-corner-dental-practice/XV017964) (Link: </services/dentist/whitton-corner-dental-practice/XV017964>)

Whitton Corner Health & Social Care Centre, Percy Road, Whitton, TW2 6JL
020 3458 5310

[Map and directions](http://maps.google.com/maps/dir/?api=1&origin=51.43255226000296,-0.33878521234196324&destination=Whitton+Corner+Health+%26+Social+Care+Centre%2c+Percy+Road%2c+Whitton+TW2+6JL&t=m) (Link: <http://maps.google.com/maps/dir/?api=1&origin=51.43255226000296,-0.33878521234196324&destination=Whitton+Corner+Health+%26+Social+Care+Centre%2c+Percy+Road%2c+Whitton+TW2+6JL&t=m>).

1.3 miles away

[Dhiman Dental Surgery](/services/dentist/dhiman-dental-surgery/XV000044) (Link: </services/dentist/dhiman-dental-surgery/XV000044>)

Dhiman Dental Surgery, 169 Percy Road, Twickenham, TW2 6JS
020 8894 3141

[Map and directions](http://maps.google.com/maps/dir/?api=1&origin=51.43255226000296,-0.33878521234196324&destination=Dhiman+Dental+Surgery%2c+169+Percy+Road%2c+Twickenham+TW2+6JS&t=m) (Link: <http://maps.google.com/maps/dir/?api=1&origin=51.43255226000296,-0.33878521234196324&destination=Dhiman+Dental+Surgery%2c+169+Percy+Road%2c+Twickenham+TW2+6JS&t=m>).

1.5 miles away

[Radpour, Shahrzad](/services/dentist/radpour-shahrzad/XV002294) (Link: /services/dentist/radpour-shahrzad/XV002294)

Tudor Lodge Dental Practice, 239 Petersham Road, Ham, TW10 7DA
020 8940 4747

[Map and directions](http://maps.google.com/maps/dir/?api=1&origin=51.43255226000296,-0.33878521234196324&destination=Tudor+Lodge+Dental+Practice%2c+239+Petersham) (Link: <http://maps.google.com/maps/dir/?api=1&origin=51.43255226000296,-0.33878521234196324&destination=Tudor+Lodge+Dental+Practice%2c+239+Petersham>)

1.6 miles away

[TW13 Dental](/services/dentist/tw13-dental/XV007876) (Link: /services/dentist/tw13-dental/XV007876)

160a Twickenham Road, Hanworth, TW13 6HD
020 8783 0401

[Map and directions](http://maps.google.com/maps/dir/?api=1&origin=51.43255226000296,-0.33878521234196324&destination=160a+Twickenham+Road%2c+Hanworth%2c+TW13) (Link: <http://maps.google.com/maps/dir/?api=1&origin=51.43255226000296,-0.33878521234196324&destination=160a+Twickenham+Road%2c+Hanworth%2c+TW13>)

1.7 miles away

[Claremont Dental Practice](/services/dentist/claremont-dental-practice/XV002371) (Link: /services/dentist/claremont-dental-practice/XV002371)

Claremont Dental Practice, 57 Crown Road, Twickenham, TW1 3EJ
020 8892 4000

[Map and directions](http://maps.google.com/maps/dir/?api=1&origin=51.43255226000296,-0.33878521234196324&destination=Claremont+Dental+Practice%2c+57+Crown+Road) (Link: <http://maps.google.com/maps/dir/?api=1&origin=51.43255226000296,-0.33878521234196324&destination=Claremont+Dental+Practice%2c+57+Crown+Road>)

1.7 miles away

[Courtyard Dental Practice](/services/dentist/courtyard-dental-practice/XV002390) (Link: /services/dentist/courtyard-dental-practice/XV002390)

Courtyard Dental Practice, Rear of 70 - 74 Station Road, Hampton, TW12 2AX
020 8979 8383

[Map and directions](http://maps.google.com/maps/dir/?api=1&origin=51.43255226000296,-0.33878521234196324&destination=Courtyard+Dental+Practice%2c+Rear+of+70+-+74+Station+Road%2c+Hampton%2c+TW12+2AX&t=m) (Link: <http://maps.google.com/maps/dir/?api=1&origin=51.43255226000296,-0.33878521234196324&destination=Courtyard+Dental+Practice%2c+Rear+of+70+-+74+Station+Road%2c+Hampton%2c+TW12+2AX&t=m>)

1.8 miles away

[John Carter & Partners](/services/dentist/john-carter-and-partners/XV002316) (Link: /services/dentist/john-carter-and-partners/XV002316)

Dental Surgery, 206 Richmond Road, Kingston-upon-Thames, KT2 5HE
020 8546 2201

[Map and directions](http://maps.google.com/maps/dir/?api=1&origin=51.43255226000296,-0.33878521234196324&destination=Dental+Surgery%2c+206+Richmond+Road%2c+Kingston-upon-Thames%2c+KT2+5HE&t=m) (Link: <http://maps.google.com/maps/dir/?api=1&origin=51.43255226000296,-0.33878521234196324&destination=Dental+Surgery%2c+206+Richmond+Road%2c+Kingston-upon-Thames%2c+KT2+5HE&t=m>)

1.8 miles away

[Mr P S Panesar](/services/dentist/mr-p-s-panesar/XV002377) (Link: /services/dentist/mr-p-s-panesar/XV002377)

Amber Dental Surgery, 165 St Margarets Road, Twickenham, TW1 1RD
020 8744 9922

[Map and directions](http://maps.google.com/maps/dir/?api=1&origin=51.43255226000296,-0.33878521234196324&destination=Amber+Dental+Surgery%2c+165+St+Margarets+Road) (Link: <http://maps.google.com/maps/dir/?api=1&origin=51.43255226000296,-0.33878521234196324&destination=Amber+Dental+Surgery%2c+165+St+Margarets+Road>)

1.8 miles away

[Apex Dental Surgery](/services/dentist/apex-dental-surgery/XV004076) (Link: /services/dentist/apex-dental-surgery/XV004076)

200 Hampton Road West, Hanworth, Feltham, London, Middlesex, TW13 6BG
020 8894 5363

[Map and directions](http://maps.google.com/maps/dir/?api=1&origin=51.43255226000296,-0.33878521234196324&destination=200+Hampton+Road+West%2c+Hanworth%2c+Feltham) (Link: <http://maps.google.com/maps/dir/?api=1&origin=51.43255226000296,-0.33878521234196324&destination=200+Hampton+Road+West%2c+Hanworth%2c+Feltham>)

2.1 miles away

[Bridge Dental Centre Limited](#) (Link: </services/dentist/bridge-dental-centre-limited/XV002373>)

Bridge Dental Centre part of Perfect Smile Group, 402 Richmond Road, East Twickenham, Greater London, TW1 2EB
020 8744 1444

[Map and directions](#) (Link: <http://maps.google.com/maps/dir/?api=1&origin=51.43255226000296,-0.33878521234196324&destination=Bridge+Dental+Centre+part+of+Perfect+Smile+Gr>)

2.1 miles away

[Thames Street Dental](#) (Link: </services/dentist/thames-street-dental/XV002320>)

Ruparels Dental Surgery, 28 Thames Street, Kingston-upon-Thames, KT1 1PE
020 8546 6546

[Map and directions](#) (Link: <http://maps.google.com/maps/dir/?api=1&origin=51.43255226000296,-0.33878521234196324&destination=Ruparels+Dental+Surgery%2c+28+Thames+Street+upon-Thames%2c+KT1+1PE&t=m>)

2.1 miles away

[The Ivory Clinic](#) (Link: </services/dentist/the-ivory-clinic/XV004050>)

114 Whitton Road, Hounslow, Middlesex, TW3 2EP
020 8894 4924

[Map and directions](#) (Link: <http://maps.google.com/maps/dir/?api=1&origin=51.43255226000296,-0.33878521234196324&destination=114+Whitton+Road%2c+Hounslow%2c+Middlese>)

2.2 miles away

[Bupa Dental Care, Kingston](#) (Link: </services/dentist/bupa-dental-care-kingston/XV020111>)

60 Eden Street, Kingston-upon-Thames, KT1 1EE
020 8549 7866

[Map and directions](#) (Link: <http://maps.google.com/maps/dir/?api=1&origin=51.43255226000296,-0.33878521234196324&destination=60+Eden+Street%2c+Kingston-upon-Thames%2c+KT1+1EE&t=m>)

2.3 miles away

[The Mount Dental Practice](#) (Link: </services/dentist/the-mount-dental-practice/XV004307>)

Mount Dental Practice, 233 Hounslow Road, Hanworth, Middlesex, TW13 6AE
020 8894 3933

[Map and directions](#) (Link: <http://maps.google.com/maps/dir/?api=1&origin=51.43255226000296,-0.33878521234196324&destination=Mount+Dental+Practice%2c+233+Hounslow+Roac>)

2.3 miles away

[Dental Beauty Feltham](#) (Link: </services/dentist/dental-beauty-feltham/XV004072>)

229 Hounslow Road, Hanworth, Feltham, Greater London, Middlesex, TW13 6AD
020 8894 6591

[Map and directions](#) (Link: <http://maps.google.com/maps/dir/?api=1&origin=51.43255226000296,-0.33878521234196324&destination=229+Hounslow+Road%2c+Hanworth%2c+Feltham>)

2.4 miles away

[Bupa Dental Care, Kingston Woodbines Avenue](#) (Link: </services/dentist/bupa-dental-care-kingston-woodbines-avenue/XV002015>)

Riverside Dental Practice, Pantiles, Woodbine Avenue, Portsmouth Road, Kingston-upon-Thames, KT1 2LY
020 8549 3252

[Map and directions](http://maps.google.com/maps/dir/?api=1&origin=51.43255226000296,-0.33878521234196324&destination=Riverside+Dental+Practice%2c+Pantiles%2c+Wood+upon-Thames%2c+KT1+2LY&t=m) (Link: <http://maps.google.com/maps/dir/?api=1&origin=51.43255226000296,-0.33878521234196324&destination=Riverside+Dental+Practice%2c+Pantiles%2c+Wood+upon-Thames%2c+KT1+2LY&t=m>)

2.4 miles away

[Brightsmile Dental Care Limited](#) (Link: </services/dentist/brightsmile-dental-care-limited/XV007699>)

Brightsmile Dental Care Limited, 17 Penrhyn Road, Kingston-upon-Thames, KT1 2BZ
020 8546 3330

[Map and directions](http://maps.google.com/maps/dir/?api=1&origin=51.43255226000296,-0.33878521234196324&destination=Brightsmile+Dental+Care+Limited%2c+17+Penrhyn+upon-Thames%2c+KT1+2BZ&t=m) (Link: <http://maps.google.com/maps/dir/?api=1&origin=51.43255226000296,-0.33878521234196324&destination=Brightsmile+Dental+Care+Limited%2c+17+Penrhyn+upon-Thames%2c+KT1+2BZ&t=m>)

2.5 miles away

[Ark Dental Practice](#) (Link: </services/dentist/ark-dental-practice/XV002285>)

Ark Dental Practice, 37 The Vineyard, Richmond, TW10 6AS
020 8940 1860

[Map and directions](http://maps.google.com/maps/dir/?api=1&origin=51.43255226000296,-0.33878521234196324&destination=Ark+Dental+Practice%2c+37+The+Vineyard%2c+R) (Link: <http://maps.google.com/maps/dir/?api=1&origin=51.43255226000296,-0.33878521234196324&destination=Ark+Dental+Practice%2c+37+The+Vineyard%2c+R>)

2.5 miles away

[mydentist, Walton Road, West Molesey](#) (Link: </services/dentist/mydentist-walton-road-west-molesey/XV002914>)

502 Walton Road, West Molesey, Surrey, KT8 2QF
020 8979 8138

[Map and directions](http://maps.google.com/maps/dir/?api=1&origin=51.43255226000296,-0.33878521234196324&destination=502+Walton+Road%2c+West+Molesey%2c+Surrey) (Link: <http://maps.google.com/maps/dir/?api=1&origin=51.43255226000296,-0.33878521234196324&destination=502+Walton+Road%2c+West+Molesey%2c+Surrey>)

2.5 miles away

[Brightsmile Dental Care](#) (Link: </services/dentist/brightsmile-dental-care/XV000767>)

41 South Street, Isleworth, Middx, TW7 7AA
020 8569 8081

[Map and directions](http://maps.google.com/maps/dir/?api=1&origin=51.43255226000296,-0.33878521234196324&destination=41+South+Street%2c+Isleworth%2c+Middx%2c+T) (Link: <http://maps.google.com/maps/dir/?api=1&origin=51.43255226000296,-0.33878521234196324&destination=41+South+Street%2c+Isleworth%2c+Middx%2c+T>)

2.6 miles away

[Kingston Hill Dental Practice](#) (Link: </services/dentist/kingston-hill-dental-practice/XV002319>)

Dental Surgery, 21 Kingston Hill, Kingston-upon-Thames, KT2 7PW
020 8546 3649

[Map and directions](http://maps.google.com/maps/dir/?api=1&origin=51.43255226000296,-0.33878521234196324&destination=Dental+Surgery%2c+21+Kingston+Hill%2c+Kingst+upon-Thames%2c+KT2+7PW&t=m) (Link: <http://maps.google.com/maps/dir/?api=1&origin=51.43255226000296,-0.33878521234196324&destination=Dental+Surgery%2c+21+Kingston+Hill%2c+Kingst+upon-Thames%2c+KT2+7PW&t=m>)

2.7 miles away

[Perfect Smile Surgery Limited](#) (Link: </services/dentist/perfect-smile-surgery-limited/XV013553>)

Perfect Smile Dental Surgery, 25-27 Kew Road, Richmond, TW9 2NQ
020 8940 5006

[Map and directions](http://maps.google.com/maps/dir/?api=1&origin=51.43255226000296,-0.33878521234196324&destination=Perfect+Smile+Dental+Surgery%2c+25-27+Kew+Road%2c+Richmond%2c+TW9+2NQ&t=m) (Link: <http://maps.google.com/maps/dir/?api=1&origin=51.43255226000296,-0.33878521234196324&destination=Perfect+Smile+Dental+Surgery%2c+25-27+Kew+Road%2c+Richmond%2c+TW9+2NQ&t=m>)

2.7 miles away

[Richmond & Twickenham PCT](/services/dentist/richmond-and-twickenham-pct/XV010024) (Link: </services/dentist/richmond-and-twickenham-pct/XV010024>)

Princess Alexandra Wing, Emergency Dental Services, Kingston Hospital, Galsworthy Road, KINGSTON UPON THAMES, KT2 7QB

[Map and directions](http://maps.google.com/maps/dir/?api=1&origin=51.43255226000296,-0.33878521234196324&destination=Princess+Alexandra+Wing%2c+Emergency+Dental) (Link: <http://maps.google.com/maps/dir/?api=1&origin=51.43255226000296,-0.33878521234196324&destination=Princess+Alexandra+Wing%2c+Emergency+Dental>)

2.7 miles away

[Kingston Community Dental Service](/services/dentist/kingston-community-dental-service/XV008031) (Link: </services/dentist/kingston-community-dental-service/XV008031>)

Princess Alexandra Dental Unit, Kingston Hospital, Galsworthy Road, KINGSTON UPON THAMES, Surrey, KT2 7QB

[Map and directions](http://maps.google.com/maps/dir/?api=1&origin=51.43255226000296,-0.33878521234196324&destination=Princess+Alexandra+Dental+Unit%2c+Kingston+H) (Link: <http://maps.google.com/maps/dir/?api=1&origin=51.43255226000296,-0.33878521234196324&destination=Princess+Alexandra+Dental+Unit%2c+Kingston+H>)

2.7 miles away

[Advance Dental Care](/services/dentist/advance-dental-care/XV004051) (Link: </services/dentist/advance-dental-care/XV004051>)

100 High Street, Hounslow, Middlesex, TW3 1NH
020 8754 3910

[Map and directions](http://maps.google.com/maps/dir/?api=1&origin=51.43255226000296,-0.33878521234196324&destination=100+High+Street%2c+Hounslow%2c+Middlesex%2c) (Link: <http://maps.google.com/maps/dir/?api=1&origin=51.43255226000296,-0.33878521234196324&destination=100+High+Street%2c+Hounslow%2c+Middlesex%2c>)

2.7 miles away

[Richmond Hill Orthodontics Limited](/services/dentist/richmond-hill-orthodontics-limited/XV139058) (Link: </services/dentist/richmond-hill-orthodontics-limited/XV139058>)

Richmond Orthodontics, 64 Sheen Road, Richmond, London, TW9 1UF

[Map and directions](http://maps.google.com/maps/dir/?api=1&origin=51.43255226000296,-0.33878521234196324&destination=Richmond+Orthodontics%2c+64+Sheen+Road%2c) (Link: <http://maps.google.com/maps/dir/?api=1&origin=51.43255226000296,-0.33878521234196324&destination=Richmond+Orthodontics%2c+64+Sheen+Road%2c>)

2.7 miles away

[High Street Dental Practice](/services/dentist/high-street-dental-practice/XV004037) (Link: </services/dentist/high-street-dental-practice/XV004037>)

Hounslow High Street Dental Practice, 148-150 High Street, Hounslow, Middlesex, TW3 1LR
020 8572 6611

[Map and directions](http://maps.google.com/maps/dir/?api=1&origin=51.43255226000296,-0.33878521234196324&destination=Hounslow+High+Street+Dental+Practice%2c+148-150+High+Street%2c+Hounslow%2c+Middlesex%2c+TW3+1LR&t=m) (Link: <http://maps.google.com/maps/dir/?api=1&origin=51.43255226000296,-0.33878521234196324&destination=Hounslow+High+Street+Dental+Practice%2c+148-150+High+Street%2c+Hounslow%2c+Middlesex%2c+TW3+1LR&t=m>)

2.7 miles away

[CareDental](/services/dentist/caidental/XV004045) (Link: </services/dentist/caidental/XV004045>)

4 Cressys Corner, Lampton Road, Hounslow, Middx, TW3 1HA
020 8570 8508

[Map and directions](http://maps.google.com/maps/dir/?api=1&origin=51.43255226000296,-0.33878521234196324&destination=4+Cressys+Corner%2c+Lampton+Road%2c+Houns) (Link: <http://maps.google.com/maps/dir/?api=1&origin=51.43255226000296,-0.33878521234196324&destination=4+Cressys+Corner%2c+Lampton+Road%2c+Houns>)

2.7 miles away

[mydentist, Staines Road, Hounslow](/services/dentist/mydentist-staines-road-hounslow/XV026187) (Link: /services/dentist/mydentist-staines-road-hounslow/XV026187)

Unit 2 and 3 Holdsworth House, 65-73 Staines Road, Hounslow, Middlesex, TW3 3HW
020 8570 0505

[Map and directions](http://maps.google.com/maps/dir/?api=1&origin=51.43255226000296,-0.33878521234196324&destination=Unit+2+and+3+Holdsworth+House%2c+65-73+Staines+Road%2c+Hounslow%2c+Middlesex%2c+TW3+3HW&t=m) (Link: <http://maps.google.com/maps/dir/?api=1&origin=51.43255226000296,-0.33878521234196324&destination=Unit+2+and+3+Holdsworth+House%2c+65-73+Staines+Road%2c+Hounslow%2c+Middlesex%2c+TW3+3HW&t=m>)

2.8 miles away

[The Dental Suite Hounslow](/services/dentist/the-dental-suite-hounslow/XV004059) (Link: /services/dentist/the-dental-suite-hounslow/XV004059)

14 Kingsley Road, Hounslow, Middlesex, TW3 1NP
020 8577 3038

[Map and directions](http://maps.google.com/maps/dir/?api=1&origin=51.43255226000296,-0.33878521234196324&destination=14+Kingsley+Road%2c+Hounslow%2c+Middlesex) (Link: <http://maps.google.com/maps/dir/?api=1&origin=51.43255226000296,-0.33878521234196324&destination=14+Kingsley+Road%2c+Hounslow%2c+Middlesex>)

2.8 miles away

[Mr M T C Wong](/services/dentist/mr-m-t-c-wong/XV010352) (Link: /services/dentist/mr-m-t-c-wong/XV010352)

The Dental Practice, 79 Sheen Road, Richmond, TW9 1YJ
020 8948 5863

[Map and directions](http://maps.google.com/maps/dir/?api=1&origin=51.43255226000296,-0.33878521234196324&destination=The+Dental+Practice%2c+79+Sheen+Road%2c+Ri) (Link: <http://maps.google.com/maps/dir/?api=1&origin=51.43255226000296,-0.33878521234196324&destination=The+Dental+Practice%2c+79+Sheen+Road%2c+Ri>)

2.8 miles away

[Orthosmile Hounslow](/services/dentist/orthosmile-hounslow/XV004063) (Link: /services/dentist/orthosmile-hounslow/XV004063)

230 Staines Road, Hounslow, London, TW3 3LR
020 8814 1422

[Map and directions](http://maps.google.com/maps/dir/?api=1&origin=51.43255226000296,-0.33878521234196324&destination=230+Staines+Road%2c+Hounslow%2c+London%2) (Link: <http://maps.google.com/maps/dir/?api=1&origin=51.43255226000296,-0.33878521234196324&destination=230+Staines+Road%2c+Hounslow%2c+London%2>)

2.8 miles away

[MRS P WINAYAK](/services/dentist/mrs-p-winayak/XV009694) (Link: /services/dentist/mrs-p-winayak/XV009694)

49 Sidmouth Avenue, ISLEWORTH, Middlesex, TW7 4DR

[Map and directions](http://maps.google.com/maps/dir/?api=1&origin=51.43255226000296,-0.33878521234196324&destination=49+Sidmouth+Avenue%2c+ISLEWORTH%2c+Midd) (Link: <http://maps.google.com/maps/dir/?api=1&origin=51.43255226000296,-0.33878521234196324&destination=49+Sidmouth+Avenue%2c+ISLEWORTH%2c+Midd>)

2.8 miles away

[Community Dental Service](/services/dentist/community-dental-service/XV019929) (Link: /services/dentist/community-dental-service/XV019929)

Heart of Hounslow Health Centre, 92 Bath Rd, Hounslow, Middx, TW3 3EL

[Map and directions](http://maps.google.com/maps/dir/?api=1&origin=51.43255226000296,-0.33878521234196324&destination=Heart+of+Hounslow+Health+Centre%2c+92+Bath) (Link: <http://maps.google.com/maps/dir/?api=1&origin=51.43255226000296,-0.33878521234196324&destination=Heart+of+Hounslow+Health+Centre%2c+92+Bath>)

2.9 miles away

[Bridge Dental Practice](/services/dentist/bridge-dental-practice/XV000766) (Link: /services/dentist/bridge-dental-practice/XV000766)

14 St Johns Road, Isleworth, Middx, London, TW7 6NN
020 8560 1544

[Map and directions](http://maps.google.com/maps/dir/?api=1&origin=51.43255226000296,-0.33878521234196324&destination=14+St+Johns+Road%2c+Isleworth%2c+Middx%2c) (Link: <http://maps.google.com/maps/dir/?api=1&origin=51.43255226000296,-0.33878521234196324&destination=14+St+Johns+Road%2c+Isleworth%2c+Middx%2c>)

2.9 miles away

[Oakleigh House Dental Practice](/services/dentist/oakleigh-house-dental-practice/XV000779) (Link: /services/dentist/oakleigh-house-dental-practice/XV000779)

Oakleigh House Dental Practice, 567 London Road, Isleworth, Middlesex, TW7 4EJ
020 8560 4623

[Map and directions](http://maps.google.com/maps/dir/?api=1&origin=51.43255226000296,-0.33878521234196324&destination=Oakleigh+House+Dental+Practice%2c+567+London+Road%2c+Isleworth%2c+Middlesex%2c+TW7+4EJ) (Link: <http://maps.google.com/maps/dir/?api=1&origin=51.43255226000296,-0.33878521234196324&destination=Oakleigh+House+Dental+Practice%2c+567+London+Road%2c+Isleworth%2c+Middlesex%2c+TW7+4EJ>)

3 miles away

[Surbiton Dental](/services/dentist/surbiton-dental/XV029841) (Link: /services/dentist/surbiton-dental/XV029841)

Surbiton Dental Office, 109 - 111 Brighton Road, Surbiton, Surrey, KT6 5NF
020 8390 3740

[Map and directions](http://maps.google.com/maps/dir/?api=1&origin=51.43255226000296,-0.33878521234196324&destination=Surbiton+Dental+Office%2c+109+-+111+Brighton+Road%2c+Surbiton%2c+Surrey%2c+KT6+5NF&t=m) (Link: <http://maps.google.com/maps/dir/?api=1&origin=51.43255226000296,-0.33878521234196324&destination=Surbiton+Dental+Office%2c+109+-+111+Brighton+Road%2c+Surbiton%2c+Surrey%2c+KT6+5NF&t=m>)

3 miles away

[Family Dental Practice](/services/dentist/family-dental-practice/XV008919) (Link: /services/dentist/family-dental-practice/XV008919)

61 Lampton Road, Hounslow, Middlesex, TW3 4JX
020 8572 2076

[Map and directions](http://maps.google.com/maps/dir/?api=1&origin=51.43255226000296,-0.33878521234196324&destination=61+Lampton+Road%2c+Hounslow%2c+Middlesex) (Link: <http://maps.google.com/maps/dir/?api=1&origin=51.43255226000296,-0.33878521234196324&destination=61+Lampton+Road%2c+Hounslow%2c+Middlesex>)

3.1 miles away

[SNS Dental Practice](/services/dentist/sns-dental-practice/XV181637) (Link: /services/dentist/sns-dental-practice/XV181637)

4-5, DOLLARY PARADE, KINGSTON ROAD, KINGSTON UPON THAMES, KT1 3PD

[Map and directions](http://maps.google.com/maps/dir/?api=1&origin=51.43255226000296,-0.33878521234196324&destination=4-5%2cDOLLARY+PARADE%2cKINGSTON+ROAD%2cKINGSTON+UPON+THAMES%2cKT1+3PD&t=m) (Link: <http://maps.google.com/maps/dir/?api=1&origin=51.43255226000296,-0.33878521234196324&destination=4-5%2cDOLLARY+PARADE%2cKINGSTON+ROAD%2cKINGSTON+UPON+THAMES%2cKT1+3PD&t=m>)

3.2 miles away

[Tomalin, Andrew Michael](/services/dentist/tomalin-andrew-michael/XV002344) (Link: /services/dentist/tomalin-andrew-michael/XV002344)

Steadham House Dental Surgery, 34 Ewell Road, Surbiton, KT6 6HX
020 8399 2376

[Map and directions](http://maps.google.com/maps/dir/?api=1&origin=51.43255226000296,-0.33878521234196324&destination=Steadham+House+Dental+Surgery%2c+34+Ewell+Road%2c+Surbiton%2c+KT6+6HX) (Link: <http://maps.google.com/maps/dir/?api=1&origin=51.43255226000296,-0.33878521234196324&destination=Steadham+House+Dental+Surgery%2c+34+Ewell+Road%2c+Surbiton%2c+KT6+6HX>)