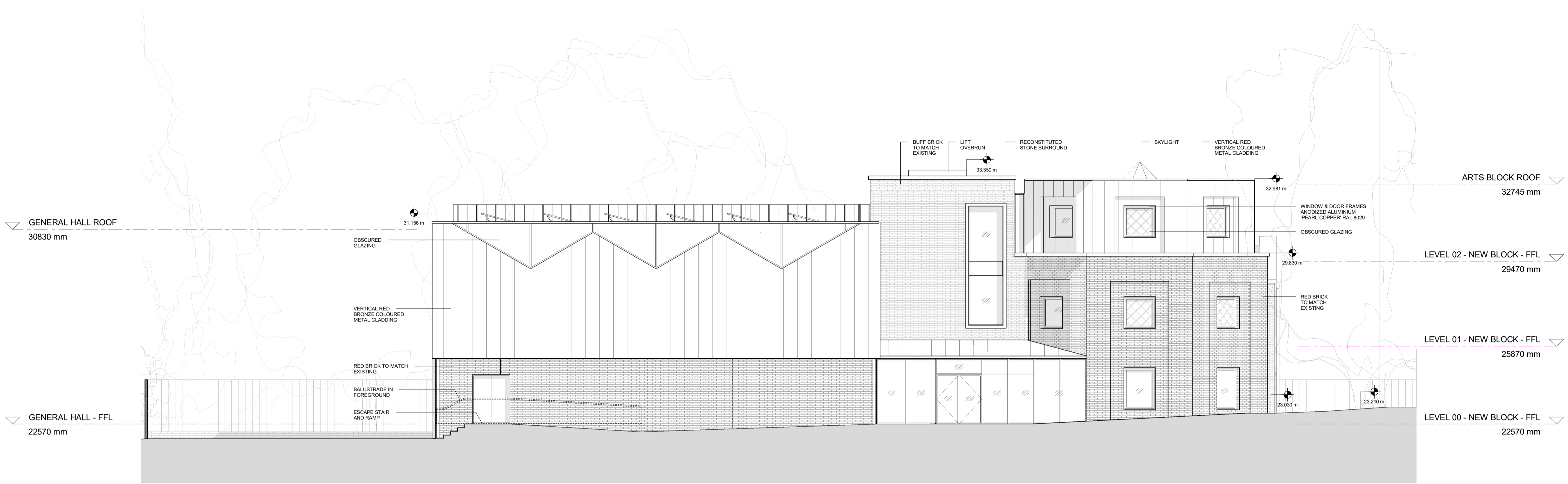
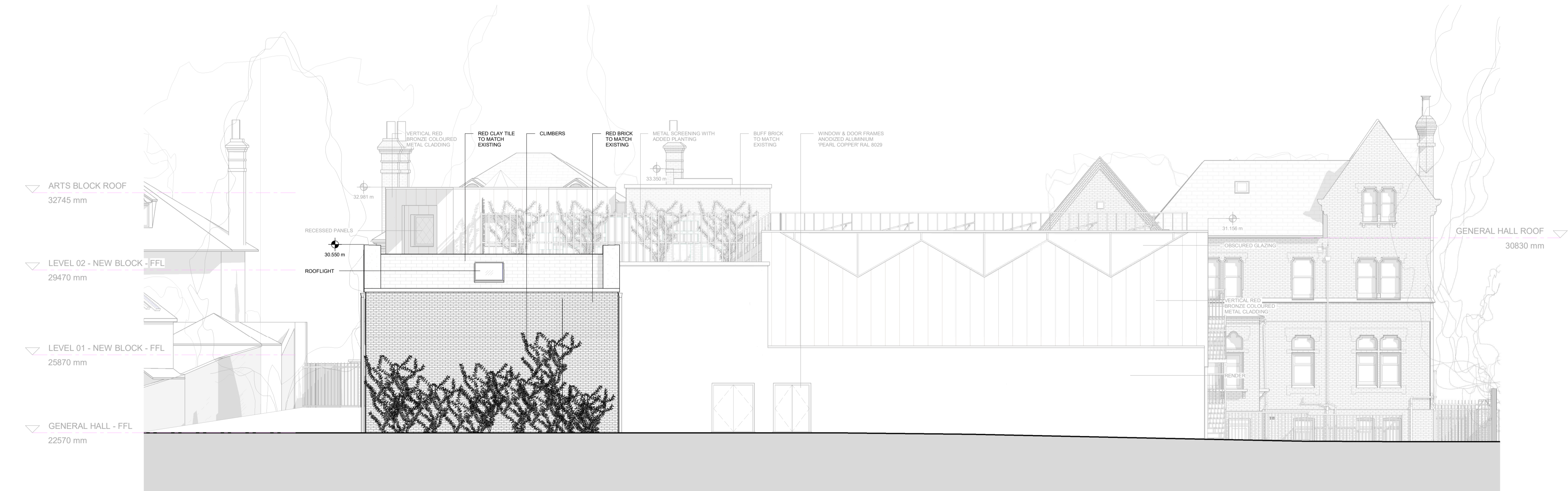


REVISION DETAILS		DATE	DRAWN BY
P 1	FIRST ISSUE	14.12.18	DMA
P 2	UPDATED LAYOUTS TO DESIGN TEAM	29.08.19	DMA
P 3	STAGE 3 ISSUE	11.09.19	DMA
P 4	REVISED STAGE 3 ISSUE	12.09.19	DMA
P 5	VALUE ENGINEERING UPDATES	17.09.19	DMA
P 6	FURTHER DMA VALUE ENGINEERING	24.09.19	DMA
P 7	S2 ISSUE FOLLOWING VE EXERCISE	27.09.19	DMA
P 8	ISSUE FOR PLANNING	17.01.20	DMA
P 9	STAGE 3 ISSUE POST PLANNING	14.02.20	DMA
P 10	REVISED PLANNING DRAWINGS	28.02.20	DMA
P 11	ELEVATIONS TO LUC & DAYLIGHT SUNLIGHT	07.12.20	DMA
P 12	UPDATED DRAWINGS TO LUC	08.01.21	DMA
P 13	ELEVATIONS TO LUC	29.01.21	DMA
P 14	ELEVATIONS TO PHOTON	01.02.21	DMA
P 15	PLANNING ISSUE	16.03.21	DMA
P 16	ADDITIONAL ANNOTATIONS	09.04.21	DMA
P 17	OBSOLETE GLAZING	24.05.21	DMA
P 18	REVISED LEVELS	01.12.21	DMA



1 ELEVATION
WEST ELEVATION - SPORTS HALL
1 : 100



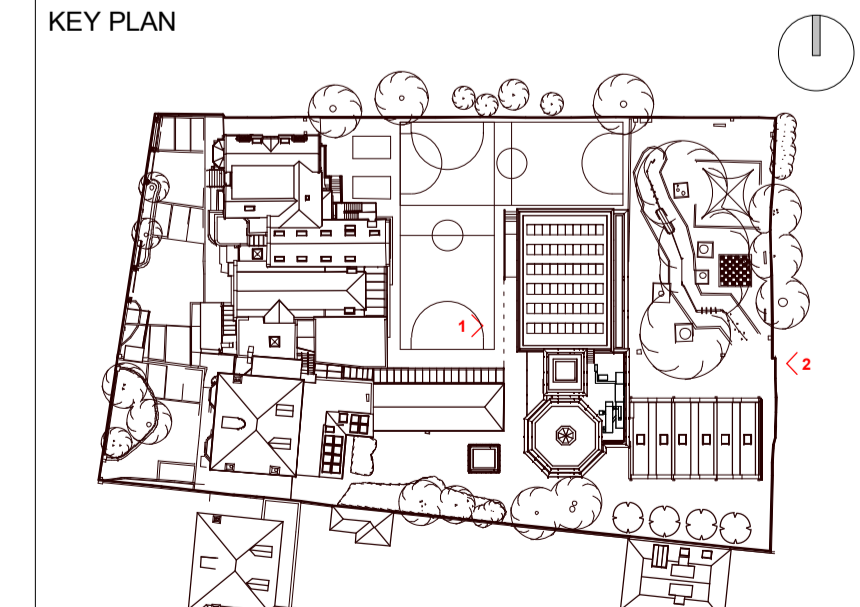
2 ELEVATION
EAST ELEVATION - MULTI-USE HALL
1 : 100

LEGEND:
 OBSCURED GLAZING HATCH

MATERIAL PALETTE:
 RED BRICK (RUNNING BOND) TO MATCH EXISTING
 RED BRICK (SOLDIER COURSE) LINTEL
 BUFF BRICK (RUNNING BOND) TO MATCH EXISTING
 VERTICAL RED BRONZE COLOURED METAL CLADDING
 RED CLAY TILES TO MATCH EXISTING
 RECONSTITUTED STONE SURROUNDS
 CREAM RENDER
 OBSCURED GLAZING
 ANODIZED ALUMINIUM DOOR / WINDOW FRAMING
 COLOUR: RAL 8029 'PEARL COPPER'
 ANODIZED ALUMINIUM RAILINGS
 COLOUR: RAL 8029 'PEARL COPPER'



KEY RESIDUAL RISK



ORIGINATOR DMA	TITLE PROPOSED ELEVATIONS	STATUS: FOR INFORMATION	REVISION: P18
PROJECT KING'S HOUSE SCHOOL 48 KING'S ROAD RICHMOND TW10 6ES	PURPOSE OF ISSUE FOR INFORMATION	CHECKED KvdS	APPROVED DMA
PROJECT KHS	ORIGINATOR DMA	VOLUME XX	LEVEL ZZ
		TYPE DR	ROLE A
		DOC NO 04100	