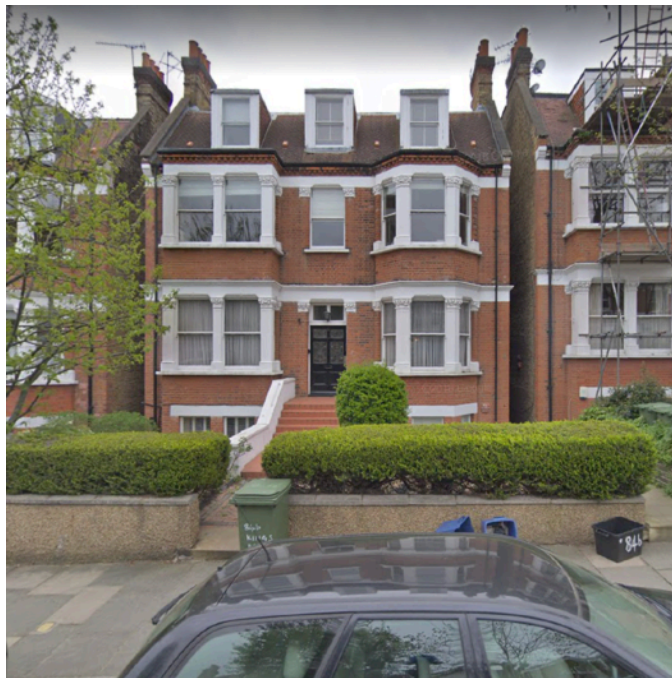


# Heritage Statement

for the addition of a garden room at 84A Kings Road, TW10 6EE

## Description of the significance of the heritage asset affected



Mostly developed between 1860s and the 1880s the St Matthias conservation area is dominated by three main roads with a few cross streets which climb up the hill. The dwellings are mostly set back from the road and many have retained their front gardens and these form an important feature throughout the area.

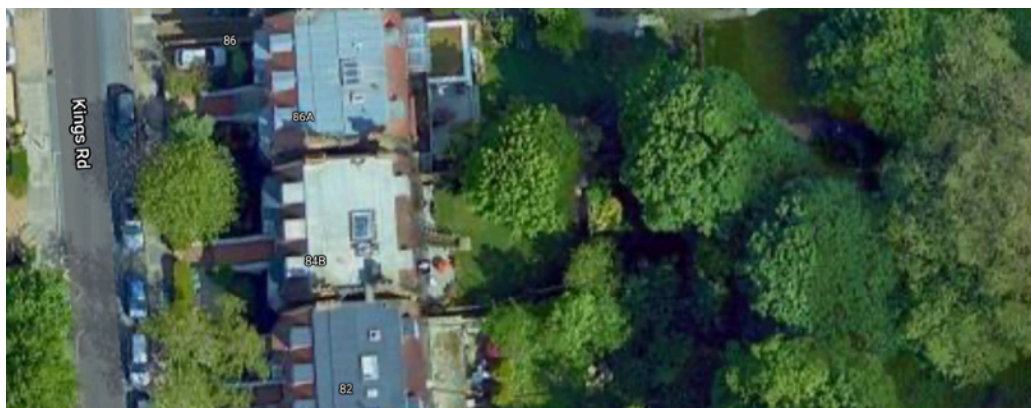
No. 84 is one of a five brick-built 3-storey double-fronted houses in the north-east corner of the conservation area on Richmond Hill. The red brick front elevation (facing the street) features a tiled roof with dormer windows and a storey below street level, and sash bay windows with

white painted stonework surrounds.

The rear elevation is of a lighter brick with casement windows and a 60 metre long, 12 metre wide garden bounded by wooden fencing and split to create two gardens for the house which is divided into an upstairs flat and a ground floor maisonette.

## The contribution of the setting to that significance

The street setting is residential with a mix of on- and off-street parking.



**Above: Street view of 84A Kings Road**

**Left: Aerial view of the garden**



## The impact of the proposals on the significance

The proposed garden studio will be a timber construction clad with black timber featheredge barn cladding sides (see *example image below right*) and a black epdm roof covering.



Being a low structure (2.7m from ground level) with timber cladding and graphite grey window and door frames it will fit discreetly at the side of the garden at a similar height or lower than existing outbuildings in neighbouring gardens. Therefore its impact on the significance will be minimal.

*Above: The street scene looking south*

*Left: View from the back of the house to site of proposed studio*

*Below left: View of the back of the house from the proposed studio site*



*Below: Example of a garden room with black timber featheredge barn cladding*

