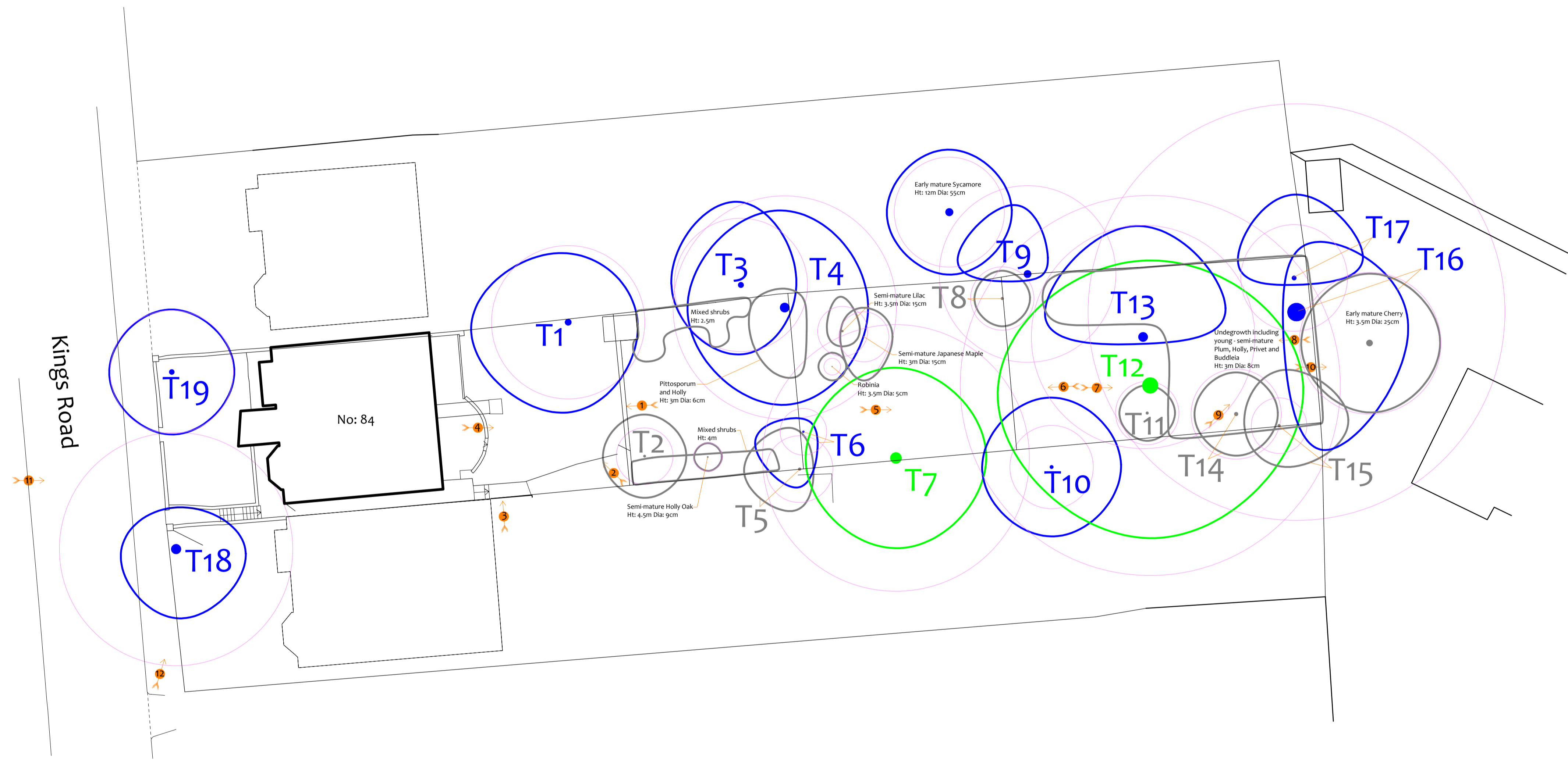


Tree Constraints Plan



Drawing No: CCL 10994 / TCP Rev: 1
 Title: Tree Constraints Plan (Existing Layout)
 Site: 84b Kings Road TW10 6EE
 Scale: 1:300 Paper Size: A1



Tree Retention Categories
 Stems & canopies shown

- Category A tree
- Category B tree
- Category C tree
- Category U tree

Trees of high quality with an estimated life expectancy of 40+ years. Usually large trees with significant presence or smaller trees with excellent form. Retention of these trees is highly desirable.

Trees of moderate quality with a life expectancy of 20+ years. Usually maturing trees, or younger trees with good form. Retention of these trees is desirable though less than Category A trees.

Unremarkable trees of low quality and merit. Individual specimens are not considered to be a material planting consideration.

Trees unsuitable for retention due to their very poor condition.

Tree Constraints Plan

BS 5837 Root Protection Area (radius = 1x stem diameter)
 Root Protection Area needing amendment due to site conditions, e.g. presence of existing road or building.
 Root Protection Area having been amended to account for site conditions

T1 = Tree No 1 G2 = Group No 2 H3 = Hedge No 3

Photo 1

MN = Measured North:
 Canopy spreads are sometimes measured to an approximate N defined by site features. Often more accurate, especially where rows of trees are not aligned N-S or E-W.

Tree Ref.	Species	Height (m)	Root Protection Area		
			Radius (m)	Square (m)	
T1	Sycamore	11	5.5	96	9.8
T2	Plum	4	2.0	13	3.6
T3	Sycamore	9	4.8	72	8.5
T4	Sycamore	13	8.0	203	14.3
T5	Sycamore	5	2.4	18	4.3
T6	Robinia	8	1.7	9	3.0
T7	Sycamore	18	9.6	290	17.0
T8	Lawson Cypress	8	2.3	16	4.0
T9	Sycamore	12	6.4	127	11.3
T10	Lime	6	3.0	28	5.3
T11	Lawson Cypress	6.5	2.3	16	4.0
T12	London Plane	22	13.7	588	24.2
T13	London Plane	15	8.0	203	14.3
T14	Elm	7	3.2	33	5.7
T15	Yew	3	2.0	13	3.5
T16	Poplar	25	15.6	765	27.7
T17	Poplar	7	3.8	46	6.8
T18	Robinia	11	8.4	222	14.9
T19	Sweet Chestnut	7	4.4	62	7.9