

APPENDIX D

Calculation Reference: AUDIT-752101-161130-1103

TRIP RATE CALCULATION SELECTION PARAMETERS:

Land Use : 06 - HOTEL, FOOD & DRINK
 Category : A - HOTELS
 MULTI-MODAL VEHICLES

Selected regions and areas:

01	GREATER LONDON	
BE	BEXLEY	1 days
GR	GREENWICH	1 days
HO	HOUNSLOW	2 days

This section displays the number of survey days per TRICS® sub-region in the selected set

Filtering Stage 2 selection:

This data displays the chosen trip rate parameter and its selected range. Only sites that fall within the parameter range are included in the trip rate calculation.

Parameter: Number of bedrooms
 Actual Range: 96 to 151 (units:)
 Range Selected by User: 82 to 100 (units:)

Public Transport Provision:

Selection by: Include all surveys

Date Range: 01/01/08 to 29/11/13

This data displays the range of survey dates selected. Only surveys that were conducted within this date range are included in the trip rate calculation.

Selected survey days:

Wednesday	2 days
Friday	2 days

This data displays the number of selected surveys by day of the week.

Selected survey types:

Manual count	4 days
Directional ATC Count	0 days

This data displays the number of manual classified surveys and the number of unclassified ATC surveys, the total adding up to the overall number of surveys in the selected set. Manual surveys are undertaken using staff, whilst ATC surveys are undertaken using machines.

Selected Locations:

Edge of Town Centre	3
Suburban Area (PPS6 Out of Centre)	1

This data displays the number of surveys per main location category within the selected set. The main location categories consist of Free Standing, Edge of Town, Suburban Area, Neighbourhood Centre, Edge of Town Centre, Town Centre and Not Known.

Selected Location Sub Categories:

Commercial Zone	1
Residential Zone	1
Retail Zone	1
No Sub Category	1

This data displays the number of surveys per location sub-category within the selected set. The location sub-categories consist of Commercial Zone, Industrial Zone, Development Zone, Residential Zone, Retail Zone, Built-Up Zone, Village, Out of Town, High Street and No Sub Category.

Filtering Stage 3 selection:

Use Class:

C1 4 days

This data displays the number of surveys per Use Class classification within the selected set. The Use Classes Order 2005 has been used for this purpose, which can be found within the Library module of TRICS®.

Population within 1 mile:

20,001 to 25,000 1 days
25,001 to 50,000 2 days
50,001 to 100,000 1 days

This data displays the number of selected surveys within stated 1-mile radii of population.

Population within 5 miles:

500,001 or More 4 days

This data displays the number of selected surveys within stated 5-mile radii of population.

Car ownership within 5 miles:

0.6 to 1.0 1 days
1.1 to 1.5 3 days

This data displays the number of selected surveys within stated ranges of average cars owned per residential dwelling, within a radius of 5-miles of selected survey sites.

Travel Plan:

No 4 days

This data displays the number of surveys within the selected set that were undertaken at sites with Travel Plans in place, and the number of surveys that were undertaken at sites without Travel Plans.

LIST OF SITES relevant to selection parameters

1	BE-06-A-02 SOUTHWOLD ROAD	HOLIDAY INN		BEXLEY
	BEXLEY Suburban Area (PPS6 Out of Centre) Residential Zone			
	Total Number of bedrooms:		107	
	Survey date: FRIDAY		29/11/13	Survey Type: MANUAL
2	GR-06-A-03 GREENWICH HIGH ROAD	NOVOTEL		GREENWICH
	GREENWICH Edge of Town Centre No Sub Category			
	Total Number of bedrooms:		151	
	Survey date: FRIDAY		22/11/13	Survey Type: MANUAL
3	HO-06-A-01 LAMPTON ROAD	DAYS HOTEL		HOUNSLOW
	HOUNSLOW Edge of Town Centre Commercial Zone			
	Total Number of bedrooms:		96	
	Survey date: WEDNESDAY		16/06/10	Survey Type: MANUAL
4	HO-06-A-02 STAINES ROAD	ETAP HOTEL		HOUNSLOW
	HOUNSLOW Edge of Town Centre Retail Zone			
	Total Number of bedrooms:		148	
	Survey date: WEDNESDAY		16/06/10	Survey Type: MANUAL

This section provides a list of all survey sites and days in the selected set. For each individual survey site, it displays a unique site reference code and site address, the selected trip rate calculation parameter and its value, the day of the week and date of each survey, and whether the survey was a manual classified count or an ATC count.

TRIP RATE for Land Use 06 - HOTEL, FOOD & DRINK/A - HOTELS

MULTI-MODAL VEHICLES

Calculation factor: 1 BEDRMS

Estimated TRIP rate value per 24 BEDRMS shown in shaded columns

BOLD print indicates peak (busiest) period

Time Range	ARRIVALS				DEPARTURES				TOTALS			
	No. Days	Ave. BEDRMS	Trip Rate	Estimated Trip Rate	No. Days	Ave. BEDRMS	Trip Rate	Estimated Trip Rate	No. Days	Ave. BEDRMS	Trip Rate	Estimated Trip Rate
00:00 - 01:00												
01:00 - 02:00												
02:00 - 03:00												
03:00 - 04:00												
04:00 - 05:00												
05:00 - 06:00												
06:00 - 07:00	1	107	0.047	1.121	1	107	0.168	4.037	1	107	0.215	5.158
07:00 - 08:00	4	126	0.040	0.956	4	126	0.108	2.582	4	126	0.148	3.538
08:00 - 09:00	4	126	0.056	1.339	4	126	0.096	2.295	4	126	0.152	3.634
09:00 - 10:00	4	126	0.066	1.578	4	126	0.054	1.291	4	126	0.120	2.869
10:00 - 11:00	4	126	0.056	1.339	4	126	0.050	1.195	4	126	0.106	2.534
11:00 - 12:00	4	126	0.062	1.482	4	126	0.054	1.291	4	126	0.116	2.773
12:00 - 13:00	4	126	0.042	1.004	4	126	0.042	1.004	4	126	0.084	2.008
13:00 - 14:00	4	126	0.028	0.669	4	126	0.042	1.004	4	126	0.070	1.673
14:00 - 15:00	4	126	0.024	0.574	4	126	0.064	1.530	4	126	0.088	2.104
15:00 - 16:00	4	126	0.082	1.960	4	126	0.054	1.291	4	126	0.136	3.251
16:00 - 17:00	4	126	0.042	1.004	4	126	0.038	0.908	4	126	0.080	1.912
17:00 - 18:00	4	126	0.042	1.004	4	126	0.048	1.147	4	126	0.090	2.151
18:00 - 19:00	4	126	0.066	1.578	4	126	0.054	1.291	4	126	0.120	2.869
19:00 - 20:00	4	126	0.108	2.582	4	126	0.044	1.052	4	126	0.152	3.634
20:00 - 21:00	4	126	0.060	1.434	4	126	0.024	0.574	4	126	0.084	2.008
21:00 - 22:00	4	126	0.104	2.486	4	126	0.048	1.147	4	126	0.152	3.633
22:00 - 23:00												
23:00 - 24:00												
Total Rates:			0.925	22.110			0.988	23.639			1.913	45.749

This section displays the trip rate results based on the selected set of surveys and the selected count type (shown just above the table). It is split by three main columns, representing arrivals trips, departures trips, and total trips (arrivals plus departures). Within each of these main columns are three sub-columns. These display the number of survey days where count data is included (per time period), the average value of the selected trip rate calculation parameter (per time period), and the trip rate result (per time period). Total trip rates (the sum of the column) are also displayed at the foot of the table.

To obtain a trip rate, the average (mean) trip rate parameter value (TRP) is first calculated for all selected survey days that have count data available for the stated time period. The average (mean) number of arrivals, departures or totals (whichever applies) is also calculated (COUNT) for all selected survey days that have count data available for the stated time period. Then, the average count is divided by the average trip rate parameter value, and multiplied by the stated calculation factor (shown just above the table and abbreviated here as FACT). So, the method is: COUNT/TRP*FACT. Trip rates are then rounded to 3 decimal places.

Parameter summary

Trip rate parameter range selected:	96 - 151 (units:)
Survey date range:	01/01/08 - 29/11/13
Number of weekdays (Monday-Friday):	4
Number of Saturdays:	0
Number of Sundays:	0
Surveys automatically removed from selection:	2
Surveys manually removed from selection:	0

This section displays a quick summary of some of the data filtering selections made by the TRICS® user. The trip rate calculation parameter range of all selected surveys is displayed first, followed by the range of minimum and maximum survey dates selected by the user. Then, the total number of selected weekdays and weekend days in the selected set of surveys are shown. Finally, the number of survey days that have been manually removed from the selected set outside of the standard filtering procedure are displayed.

TRIP RATE for Land Use 06 - HOTEL, FOOD & DRINK/A - HOTELS

MULTI-MODAL TAXIS

Calculation factor: 1 BEDRMS

Estimated TRIP rate value per 24 BEDRMS shown in shaded columns

BOLD print indicates peak (busiest) period

Time Range	ARRIVALS				DEPARTURES				TOTALS			
	No. Days	Ave. BEDRMS	Trip Rate	Estimated Trip Rate	No. Days	Ave. BEDRMS	Trip Rate	Estimated Trip Rate	No. Days	Ave. BEDRMS	Trip Rate	Estimated Trip Rate
00:00 - 01:00												
01:00 - 02:00												
02:00 - 03:00												
03:00 - 04:00												
04:00 - 05:00												
05:00 - 06:00												
06:00 - 07:00	1	107	0.000	0.000	1	107	0.000	0.000	1	107	0.000	0.000
07:00 - 08:00	4	126	0.004	0.096	4	126	0.004	0.096	4	126	0.008	0.192
08:00 - 09:00	4	126	0.006	0.143	4	126	0.006	0.143	4	126	0.012	0.286
09:00 - 10:00	4	126	0.006	0.143	4	126	0.006	0.143	4	126	0.012	0.286
10:00 - 11:00	4	126	0.020	0.478	4	126	0.020	0.478	4	126	0.040	0.956
11:00 - 12:00	4	126	0.012	0.287	4	126	0.012	0.287	4	126	0.024	0.574
12:00 - 13:00	4	126	0.000	0.000	4	126	0.000	0.000	4	126	0.000	0.000
13:00 - 14:00	4	126	0.002	0.048	4	126	0.002	0.048	4	126	0.004	0.096
14:00 - 15:00	4	126	0.004	0.096	4	126	0.004	0.096	4	126	0.008	0.192
15:00 - 16:00	4	126	0.006	0.143	4	126	0.006	0.143	4	126	0.012	0.286
16:00 - 17:00	4	126	0.004	0.096	4	126	0.004	0.096	4	126	0.008	0.192
17:00 - 18:00	4	126	0.006	0.143	4	126	0.006	0.143	4	126	0.012	0.286
18:00 - 19:00	4	126	0.008	0.191	4	126	0.008	0.191	4	126	0.016	0.382
19:00 - 20:00	4	126	0.016	0.382	4	126	0.016	0.382	4	126	0.032	0.764
20:00 - 21:00	4	126	0.006	0.143	4	126	0.006	0.143	4	126	0.012	0.286
21:00 - 22:00	4	126	0.020	0.478	4	126	0.020	0.478	4	126	0.040	0.956
22:00 - 23:00												
23:00 - 24:00												
Total Rates:			0.120	2.867			0.120	2.867			0.240	5.734

This section displays the trip rate results based on the selected set of surveys and the selected count type (shown just above the table). It is split by three main columns, representing arrivals trips, departures trips, and total trips (arrivals plus departures). Within each of these main columns are three sub-columns. These display the number of survey days where count data is included (per time period), the average value of the selected trip rate calculation parameter (per time period), and the trip rate result (per time period). Total trip rates (the sum of the column) are also displayed at the foot of the table.

To obtain a trip rate, the average (mean) trip rate parameter value (TRP) is first calculated for all selected survey days that have count data available for the stated time period. The average (mean) number of arrivals, departures or totals (whichever applies) is also calculated (COUNT) for all selected survey days that have count data available for the stated time period. Then, the average count is divided by the average trip rate parameter value, and multiplied by the stated calculation factor (shown just above the table and abbreviated here as FACT). So, the method is: COUNT/TRP*FACT. Trip rates are then rounded to 3 decimal places.

Parameter summary

Trip rate parameter range selected:	96 - 151 (units:)
Survey date range:	01/01/08 - 29/11/13
Number of weekdays (Monday-Friday):	4
Number of Saturdays:	0
Number of Sundays:	0
Surveys automatically removed from selection:	2
Surveys manually removed from selection:	0

This section displays a quick summary of some of the data filtering selections made by the TRICS® user. The trip rate calculation parameter range of all selected surveys is displayed first, followed by the range of minimum and maximum survey dates selected by the user. Then, the total number of selected weekdays and weekend days in the selected set of surveys are shown. Finally, the number of survey days that have been manually removed from the selected set outside of the standard filtering procedure are displayed.

TRIP RATE for Land Use 06 - HOTEL, FOOD & DRINK/A - HOTELS

MULTI-MODAL OGVS

Calculation factor: 1 BEDRMS

Estimated TRIP rate value per 24 BEDRMS shown in shaded columns

BOLD print indicates peak (busiest) period

Time Range	ARRIVALS				DEPARTURES				TOTALS			
	No. Days	Ave. BEDRMS	Trip Rate	Estimated Trip Rate	No. Days	Ave. BEDRMS	Trip Rate	Estimated Trip Rate	No. Days	Ave. BEDRMS	Trip Rate	Estimated Trip Rate
00:00 - 01:00												
01:00 - 02:00												
02:00 - 03:00												
03:00 - 04:00												
04:00 - 05:00												
05:00 - 06:00												
06:00 - 07:00	1	107	0.009	0.224	1	107	0.009	0.224	1	107	0.018	0.448
07:00 - 08:00	4	126	0.004	0.096	4	126	0.004	0.096	4	126	0.008	0.192
08:00 - 09:00	4	126	0.000	0.000	4	126	0.000	0.000	4	126	0.000	0.000
09:00 - 10:00	4	126	0.002	0.048	4	126	0.002	0.048	4	126	0.004	0.096
10:00 - 11:00	4	126	0.002	0.048	4	126	0.002	0.048	4	126	0.004	0.096
11:00 - 12:00	4	126	0.000	0.000	4	126	0.000	0.000	4	126	0.000	0.000
12:00 - 13:00	4	126	0.006	0.143	4	126	0.006	0.143	4	126	0.012	0.286
13:00 - 14:00	4	126	0.000	0.000	4	126	0.000	0.000	4	126	0.000	0.000
14:00 - 15:00	4	126	0.000	0.000	4	126	0.000	0.000	4	126	0.000	0.000
15:00 - 16:00	4	126	0.000	0.000	4	126	0.000	0.000	4	126	0.000	0.000
16:00 - 17:00	4	126	0.000	0.000	4	126	0.000	0.000	4	126	0.000	0.000
17:00 - 18:00	4	126	0.002	0.048	4	126	0.002	0.048	4	126	0.004	0.096
18:00 - 19:00	4	126	0.000	0.000	4	126	0.000	0.000	4	126	0.000	0.000
19:00 - 20:00	4	126	0.002	0.048	4	126	0.002	0.048	4	126	0.004	0.096
20:00 - 21:00	4	126	0.000	0.000	4	126	0.000	0.000	4	126	0.000	0.000
21:00 - 22:00	4	126	0.000	0.000	4	126	0.000	0.000	4	126	0.000	0.000
22:00 - 23:00												
23:00 - 24:00												
Total Rates:			0.027	0.655			0.027	0.655			0.054	1.310

This section displays the trip rate results based on the selected set of surveys and the selected count type (shown just above the table). It is split by three main columns, representing arrivals trips, departures trips, and total trips (arrivals plus departures). Within each of these main columns are three sub-columns. These display the number of survey days where count data is included (per time period), the average value of the selected trip rate calculation parameter (per time period), and the trip rate result (per time period). Total trip rates (the sum of the column) are also displayed at the foot of the table.

To obtain a trip rate, the average (mean) trip rate parameter value (TRP) is first calculated for all selected survey days that have count data available for the stated time period. The average (mean) number of arrivals, departures or totals (whichever applies) is also calculated (COUNT) for all selected survey days that have count data available for the stated time period. Then, the average count is divided by the average trip rate parameter value, and multiplied by the stated calculation factor (shown just above the table and abbreviated here as FACT). So, the method is: COUNT/TRP*FACT. Trip rates are then rounded to 3 decimal places.

Parameter summary

Trip rate parameter range selected:	96 - 151 (units:)
Survey date range:	01/01/08 - 29/11/13
Number of weekdays (Monday-Friday):	4
Number of Saturdays:	0
Number of Sundays:	0
Surveys automatically removed from selection:	2
Surveys manually removed from selection:	0

This section displays a quick summary of some of the data filtering selections made by the TRICS® user. The trip rate calculation parameter range of all selected surveys is displayed first, followed by the range of minimum and maximum survey dates selected by the user. Then, the total number of selected weekdays and weekend days in the selected set of surveys are shown. Finally, the number of survey days that have been manually removed from the selected set outside of the standard filtering procedure are displayed.

TRIP RATE for Land Use 06 - HOTEL, FOOD & DRINK/A - HOTELS
MULTI-MODAL PSVS

Calculation factor: 1 BEDRMS

Estimated TRIP rate value per 24 BEDRMS shown in shaded columns

BOLD print indicates peak (busiest) period

Time Range	ARRIVALS				DEPARTURES				TOTALS			
	No. Days	Ave. BEDRMS	Trip Rate	Estimated Trip Rate	No. Days	Ave. BEDRMS	Trip Rate	Estimated Trip Rate	No. Days	Ave. BEDRMS	Trip Rate	Estimated Trip Rate
00:00 - 01:00												
01:00 - 02:00												
02:00 - 03:00												
03:00 - 04:00												
04:00 - 05:00												
05:00 - 06:00												
06:00 - 07:00	1	107	0.000	0.000	1	107	0.000	0.000	1	107	0.000	0.000
07:00 - 08:00	4	126	0.004	0.096	4	126	0.004	0.096	4	126	0.008	0.192
08:00 - 09:00	4	126	0.004	0.096	4	126	0.006	0.143	4	126	0.010	0.239
09:00 - 10:00	4	126	0.000	0.000	4	126	0.000	0.000	4	126	0.000	0.000
10:00 - 11:00	4	126	0.002	0.048	4	126	0.000	0.000	4	126	0.002	0.048
11:00 - 12:00	4	126	0.000	0.000	4	126	0.000	0.000	4	126	0.000	0.000
12:00 - 13:00	4	126	0.000	0.000	4	126	0.000	0.000	4	126	0.000	0.000
13:00 - 14:00	4	126	0.000	0.000	4	126	0.000	0.000	4	126	0.000	0.000
14:00 - 15:00	4	126	0.000	0.000	4	126	0.000	0.000	4	126	0.000	0.000
15:00 - 16:00	4	126	0.000	0.000	4	126	0.000	0.000	4	126	0.000	0.000
16:00 - 17:00	4	126	0.002	0.048	4	126	0.000	0.000	4	126	0.002	0.048
17:00 - 18:00	4	126	0.000	0.000	4	126	0.000	0.000	4	126	0.000	0.000
18:00 - 19:00	4	126	0.000	0.000	4	126	0.002	0.048	4	126	0.002	0.048
19:00 - 20:00	4	126	0.000	0.000	4	126	0.000	0.000	4	126	0.000	0.000
20:00 - 21:00	4	126	0.000	0.000	4	126	0.000	0.000	4	126	0.000	0.000
21:00 - 22:00	4	126	0.006	0.143	4	126	0.002	0.048	4	126	0.008	0.191
22:00 - 23:00												
23:00 - 24:00												
Total Rates:			0.018	0.431			0.014	0.335			0.032	0.766

This section displays the trip rate results based on the selected set of surveys and the selected count type (shown just above the table). It is split by three main columns, representing arrivals trips, departures trips, and total trips (arrivals plus departures). Within each of these main columns are three sub-columns. These display the number of survey days where count data is included (per time period), the average value of the selected trip rate calculation parameter (per time period), and the trip rate result (per time period). Total trip rates (the sum of the column) are also displayed at the foot of the table.

To obtain a trip rate, the average (mean) trip rate parameter value (TRP) is first calculated for all selected survey days that have count data available for the stated time period. The average (mean) number of arrivals, departures or totals (whichever applies) is also calculated (COUNT) for all selected survey days that have count data available for the stated time period. Then, the average count is divided by the average trip rate parameter value, and multiplied by the stated calculation factor (shown just above the table and abbreviated here as FACT). So, the method is: COUNT/TRP*FACT. Trip rates are then rounded to 3 decimal places.

Parameter summary

Trip rate parameter range selected: 96 - 151 (units:)
 Survey date range: 01/01/08 - 29/11/13
 Number of weekdays (Monday-Friday): 4
 Number of Saturdays: 0
 Number of Sundays: 0
 Surveys automatically removed from selection: 2
 Surveys manually removed from selection: 0

This section displays a quick summary of some of the data filtering selections made by the TRICS® user. The trip rate calculation parameter range of all selected surveys is displayed first, followed by the range of minimum and maximum survey dates selected by the user. Then, the total number of selected weekdays and weekend days in the selected set of surveys are shown. Finally, the number of survey days that have been manually removed from the selected set outside of the standard filtering procedure are displayed.

TRIP RATE for Land Use 06 - HOTEL, FOOD & DRINK/A - HOTELS

MULTI-MODAL CYCLISTS

Calculation factor: 1 BEDRMS

Estimated TRIP rate value per 24 BEDRMS shown in shaded columns

BOLD print indicates peak (busiest) period

Time Range	ARRIVALS				DEPARTURES				TOTALS			
	No. Days	Ave. BEDRMS	Trip Rate	Estimated Trip Rate	No. Days	Ave. BEDRMS	Trip Rate	Estimated Trip Rate	No. Days	Ave. BEDRMS	Trip Rate	Estimated Trip Rate
00:00 - 01:00												
01:00 - 02:00												
02:00 - 03:00												
03:00 - 04:00												
04:00 - 05:00												
05:00 - 06:00												
06:00 - 07:00	1	107	0.000	0.000	1	107	0.000	0.000	1	107	0.000	0.000
07:00 - 08:00	4	126	0.006	0.143	4	126	0.000	0.000	4	126	0.006	0.143
08:00 - 09:00	4	126	0.000	0.000	4	126	0.000	0.000	4	126	0.000	0.000
09:00 - 10:00	4	126	0.000	0.000	4	126	0.000	0.000	4	126	0.000	0.000
10:00 - 11:00	4	126	0.000	0.000	4	126	0.002	0.048	4	126	0.002	0.048
11:00 - 12:00	4	126	0.000	0.000	4	126	0.002	0.048	4	126	0.002	0.048
12:00 - 13:00	4	126	0.000	0.000	4	126	0.000	0.000	4	126	0.000	0.000
13:00 - 14:00	4	126	0.002	0.048	4	126	0.002	0.048	4	126	0.004	0.096
14:00 - 15:00	4	126	0.000	0.000	4	126	0.000	0.000	4	126	0.000	0.000
15:00 - 16:00	4	126	0.000	0.000	4	126	0.000	0.000	4	126	0.000	0.000
16:00 - 17:00	4	126	0.000	0.000	4	126	0.000	0.000	4	126	0.000	0.000
17:00 - 18:00	4	126	0.000	0.000	4	126	0.002	0.048	4	126	0.002	0.048
18:00 - 19:00	4	126	0.000	0.000	4	126	0.000	0.000	4	126	0.000	0.000
19:00 - 20:00	4	126	0.000	0.000	4	126	0.000	0.000	4	126	0.000	0.000
20:00 - 21:00	4	126	0.000	0.000	4	126	0.000	0.000	4	126	0.000	0.000
21:00 - 22:00	4	126	0.000	0.000	4	126	0.000	0.000	4	126	0.000	0.000
22:00 - 23:00	1	107	0.000	0.000	1	107	0.000	0.000	1	107	0.000	0.000
23:00 - 24:00	1	107	0.000	0.000	1	107	0.000	0.000	1	107	0.000	0.000
Total Rates:			0.008	0.191			0.008	0.192			0.016	0.383

This section displays the trip rate results based on the selected set of surveys and the selected count type (shown just above the table). It is split by three main columns, representing arrivals trips, departures trips, and total trips (arrivals plus departures). Within each of these main columns are three sub-columns. These display the number of survey days where count data is included (per time period), the average value of the selected trip rate calculation parameter (per time period), and the trip rate result (per time period). Total trip rates (the sum of the column) are also displayed at the foot of the table.

To obtain a trip rate, the average (mean) trip rate parameter value (TRP) is first calculated for all selected survey days that have count data available for the stated time period. The average (mean) number of arrivals, departures or totals (whichever applies) is also calculated (COUNT) for all selected survey days that have count data available for the stated time period. Then, the average count is divided by the average trip rate parameter value, and multiplied by the stated calculation factor (shown just above the table and abbreviated here as FACT). So, the method is: COUNT/TRP*FACT. Trip rates are then rounded to 3 decimal places.

Parameter summary

Trip rate parameter range selected:	96 - 151 (units:)
Survey date range:	01/01/08 - 29/11/13
Number of weekdays (Monday-Friday):	4
Number of Saturdays:	0
Number of Sundays:	0
Surveys automatically removed from selection:	2
Surveys manually removed from selection:	0

This section displays a quick summary of some of the data filtering selections made by the TRICS® user. The trip rate calculation parameter range of all selected surveys is displayed first, followed by the range of minimum and maximum survey dates selected by the user. Then, the total number of selected weekdays and weekend days in the selected set of surveys are shown. Finally, the number of survey days that have been manually removed from the selected set outside of the standard filtering procedure are displayed.

TRIP RATE for Land Use 06 - HOTEL, FOOD & DRINK/A - HOTELS

MULTI-MODAL VEHICLE OCCUPANTS

Calculation factor: 1 BEDRMS

Estimated TRIP rate value per 24 BEDRMS shown in shaded columns

BOLD print indicates peak (busiest) period

Time Range	ARRIVALS				DEPARTURES				TOTALS			
	No. Days	Ave. BEDRMS	Trip Rate	Estimated Trip Rate	No. Days	Ave. BEDRMS	Trip Rate	Estimated Trip Rate	No. Days	Ave. BEDRMS	Trip Rate	Estimated Trip Rate
00:00 - 01:00												
01:00 - 02:00												
02:00 - 03:00												
03:00 - 04:00												
04:00 - 05:00												
05:00 - 06:00												
06:00 - 07:00	1	107	0.047	1.121	1	107	0.224	5.383	1	107	0.271	6.504
07:00 - 08:00	4	126	0.036	0.861	4	126	0.139	3.347	4	126	0.175	4.208
08:00 - 09:00	4	126	0.058	1.386	4	126	0.125	3.012	4	126	0.183	4.398
09:00 - 10:00	4	126	0.074	1.769	4	126	0.068	1.625	4	126	0.142	3.394
10:00 - 11:00	4	126	0.054	1.291	4	126	0.068	1.625	4	126	0.122	2.916
11:00 - 12:00	4	126	0.066	1.578	4	126	0.074	1.769	4	126	0.140	3.347
12:00 - 13:00	4	126	0.070	1.673	4	126	0.072	1.721	4	126	0.142	3.394
13:00 - 14:00	4	126	0.044	1.052	4	126	0.054	1.291	4	126	0.098	2.343
14:00 - 15:00	4	126	0.032	0.765	4	126	0.104	2.486	4	126	0.136	3.251
15:00 - 16:00	4	126	0.129	3.108	4	126	0.068	1.625	4	126	0.197	4.733
16:00 - 17:00	4	126	0.074	1.769	4	126	0.040	0.956	4	126	0.114	2.725
17:00 - 18:00	4	126	0.048	1.147	4	126	0.066	1.578	4	126	0.114	2.725
18:00 - 19:00	4	126	0.110	2.629	4	126	0.084	2.008	4	126	0.194	4.637
19:00 - 20:00	4	126	0.175	4.207	4	126	0.062	1.482	4	126	0.237	5.689
20:00 - 21:00	4	126	0.098	2.343	4	126	0.032	0.765	4	126	0.130	3.108
21:00 - 22:00	4	126	0.203	4.876	4	126	0.060	1.434	4	126	0.263	6.310
22:00 - 23:00												
23:00 - 24:00												
Total Rates:			1.318	31.575			1.340	32.107			2.658	63.682

This section displays the trip rate results based on the selected set of surveys and the selected count type (shown just above the table). It is split by three main columns, representing arrivals trips, departures trips, and total trips (arrivals plus departures). Within each of these main columns are three sub-columns. These display the number of survey days where count data is included (per time period), the average value of the selected trip rate calculation parameter (per time period), and the trip rate result (per time period). Total trip rates (the sum of the column) are also displayed at the foot of the table.

To obtain a trip rate, the average (mean) trip rate parameter value (TRP) is first calculated for all selected survey days that have count data available for the stated time period. The average (mean) number of arrivals, departures or totals (whichever applies) is also calculated (COUNT) for all selected survey days that have count data available for the stated time period. Then, the average count is divided by the average trip rate parameter value, and multiplied by the stated calculation factor (shown just above the table and abbreviated here as FACT). So, the method is: COUNT/TRP*FACT. Trip rates are then rounded to 3 decimal places.

Parameter summary

Trip rate parameter range selected:	96 - 151 (units:)
Survey date range:	01/01/08 - 29/11/13
Number of weekdays (Monday-Friday):	4
Number of Saturdays:	0
Number of Sundays:	0
Surveys automatically removed from selection:	2
Surveys manually removed from selection:	0

This section displays a quick summary of some of the data filtering selections made by the TRICS® user. The trip rate calculation parameter range of all selected surveys is displayed first, followed by the range of minimum and maximum survey dates selected by the user. Then, the total number of selected weekdays and weekend days in the selected set of surveys are shown. Finally, the number of survey days that have been manually removed from the selected set outside of the standard filtering procedure are displayed.

TRIP RATE for Land Use 06 - HOTEL, FOOD & DRINK/A - HOTELS

MULTI-MODAL PEDESTRIANS

Calculation factor: 1 BEDRMS

Estimated TRIP rate value per 24 BEDRMS shown in shaded columns

BOLD print indicates peak (busiest) period

Time Range	ARRIVALS				DEPARTURES				TOTALS			
	No. Days	Ave. BEDRMS	Trip Rate	Estimated Trip Rate	No. Days	Ave. BEDRMS	Trip Rate	Estimated Trip Rate	No. Days	Ave. BEDRMS	Trip Rate	Estimated Trip Rate
00:00 - 01:00												
01:00 - 02:00												
02:00 - 03:00												
03:00 - 04:00												
04:00 - 05:00												
05:00 - 06:00												
06:00 - 07:00	1	107	0.000	0.000	1	107	0.000	0.000	1	107	0.000	0.000
07:00 - 08:00	4	126	0.022	0.526	4	126	0.038	0.908	4	126	0.060	1.434
08:00 - 09:00	4	126	0.032	0.765	4	126	0.066	1.578	4	126	0.098	2.343
09:00 - 10:00	4	126	0.048	1.147	4	126	0.094	2.247	4	126	0.142	3.394
10:00 - 11:00	4	126	0.066	1.578	4	126	0.046	1.100	4	126	0.112	2.678
11:00 - 12:00	4	126	0.044	1.052	4	126	0.068	1.625	4	126	0.112	2.677
12:00 - 13:00	4	126	0.050	1.195	4	126	0.030	0.717	4	126	0.080	1.912
13:00 - 14:00	4	126	0.050	1.195	4	126	0.044	1.052	4	126	0.094	2.247
14:00 - 15:00	4	126	0.032	0.765	4	126	0.028	0.669	4	126	0.060	1.434
15:00 - 16:00	4	126	0.042	1.004	4	126	0.070	1.673	4	126	0.112	2.677
16:00 - 17:00	4	126	0.096	2.295	4	126	0.052	1.243	4	126	0.148	3.538
17:00 - 18:00	4	126	0.094	2.247	4	126	0.076	1.817	4	126	0.170	4.064
18:00 - 19:00	4	126	0.125	3.012	4	126	0.125	3.012	4	126	0.250	6.024
19:00 - 20:00	4	126	0.133	3.203	4	126	0.135	3.251	4	126	0.268	6.454
20:00 - 21:00	4	126	0.137	3.299	4	126	0.122	2.916	4	126	0.259	6.215
21:00 - 22:00	4	126	0.197	4.733	4	126	0.090	2.151	4	126	0.287	6.884
22:00 - 23:00												
23:00 - 24:00												
Total Rates:			1.168	28.016			1.084	25.959			2.252	53.975

This section displays the trip rate results based on the selected set of surveys and the selected count type (shown just above the table). It is split by three main columns, representing arrivals trips, departures trips, and total trips (arrivals plus departures). Within each of these main columns are three sub-columns. These display the number of survey days where count data is included (per time period), the average value of the selected trip rate calculation parameter (per time period), and the trip rate result (per time period). Total trip rates (the sum of the column) are also displayed at the foot of the table.

To obtain a trip rate, the average (mean) trip rate parameter value (TRP) is first calculated for all selected survey days that have count data available for the stated time period. The average (mean) number of arrivals, departures or totals (whichever applies) is also calculated (COUNT) for all selected survey days that have count data available for the stated time period. Then, the average count is divided by the average trip rate parameter value, and multiplied by the stated calculation factor (shown just above the table and abbreviated here as FACT). So, the method is: COUNT/TRP*FACT. Trip rates are then rounded to 3 decimal places.

Parameter summary

Trip rate parameter range selected:	96 - 151 (units:)
Survey date range:	01/01/08 - 29/11/13
Number of weekdays (Monday-Friday):	4
Number of Saturdays:	0
Number of Sundays:	0
Surveys automatically removed from selection:	2
Surveys manually removed from selection:	0

This section displays a quick summary of some of the data filtering selections made by the TRICS® user. The trip rate calculation parameter range of all selected surveys is displayed first, followed by the range of minimum and maximum survey dates selected by the user. Then, the total number of selected weekdays and weekend days in the selected set of surveys are shown. Finally, the number of survey days that have been manually removed from the selected set outside of the standard filtering procedure are displayed.

TRIP RATE for Land Use 06 - HOTEL, FOOD & DRINK/A - HOTELS
MULTI-MODAL BUS/TRAM PASSENGERS

Calculation factor: 1 BEDRMS

Estimated TRIP rate value per 24 BEDRMS shown in shaded columns

BOLD print indicates peak (busiest) period

Time Range	ARRIVALS				DEPARTURES				TOTALS			
	No. Days	Ave. BEDRMS	Trip Rate	Estimated Trip Rate	No. Days	Ave. BEDRMS	Trip Rate	Estimated Trip Rate	No. Days	Ave. BEDRMS	Trip Rate	Estimated Trip Rate
00:00 - 01:00												
01:00 - 02:00												
02:00 - 03:00												
03:00 - 04:00												
04:00 - 05:00												
05:00 - 06:00												
06:00 - 07:00	1	107	0.009	0.224	1	107	0.009	0.224	1	107	0.018	0.448
07:00 - 08:00	4	126	0.008	0.191	4	126	0.010	0.239	4	126	0.018	0.430
08:00 - 09:00	4	126	0.012	0.287	4	126	0.012	0.287	4	126	0.024	0.574
09:00 - 10:00	4	126	0.006	0.143	4	126	0.020	0.478	4	126	0.026	0.621
10:00 - 11:00	4	126	0.006	0.143	4	126	0.000	0.000	4	126	0.006	0.143
11:00 - 12:00	4	126	0.016	0.382	4	126	0.018	0.430	4	126	0.034	0.812
12:00 - 13:00	4	126	0.006	0.143	4	126	0.004	0.096	4	126	0.010	0.239
13:00 - 14:00	4	126	0.008	0.191	4	126	0.016	0.382	4	126	0.024	0.573
14:00 - 15:00	4	126	0.006	0.143	4	126	0.016	0.382	4	126	0.022	0.525
15:00 - 16:00	4	126	0.020	0.478	4	126	0.014	0.335	4	126	0.034	0.813
16:00 - 17:00	4	126	0.008	0.191	4	126	0.016	0.382	4	126	0.024	0.573
17:00 - 18:00	4	126	0.014	0.335	4	126	0.018	0.430	4	126	0.032	0.765
18:00 - 19:00	4	126	0.016	0.382	4	126	0.008	0.191	4	126	0.024	0.573
19:00 - 20:00	4	126	0.014	0.335	4	126	0.008	0.191	4	126	0.022	0.526
20:00 - 21:00	4	126	0.016	0.382	4	126	0.010	0.239	4	126	0.026	0.621
21:00 - 22:00	4	126	0.008	0.191	4	126	0.002	0.048	4	126	0.010	0.239
22:00 - 23:00												
23:00 - 24:00												
Total Rates:			0.173	4.141			0.181	4.334			0.354	8.475

This section displays the trip rate results based on the selected set of surveys and the selected count type (shown just above the table). It is split by three main columns, representing arrivals trips, departures trips, and total trips (arrivals plus departures). Within each of these main columns are three sub-columns. These display the number of survey days where count data is included (per time period), the average value of the selected trip rate calculation parameter (per time period), and the trip rate result (per time period). Total trip rates (the sum of the column) are also displayed at the foot of the table.

To obtain a trip rate, the average (mean) trip rate parameter value (TRP) is first calculated for all selected survey days that have count data available for the stated time period. The average (mean) number of arrivals, departures or totals (whichever applies) is also calculated (COUNT) for all selected survey days that have count data available for the stated time period. Then, the average count is divided by the average trip rate parameter value, and multiplied by the stated calculation factor (shown just above the table and abbreviated here as FACT). So, the method is: COUNT/TRP*FACT. Trip rates are then rounded to 3 decimal places.

Parameter summary

Trip rate parameter range selected: 96 - 151 (units:)
 Survey date range: 01/01/08 - 29/11/13
 Number of weekdays (Monday-Friday): 4
 Number of Saturdays: 0
 Number of Sundays: 0
 Surveys automatically removed from selection: 2
 Surveys manually removed from selection: 0

This section displays a quick summary of some of the data filtering selections made by the TRICS® user. The trip rate calculation parameter range of all selected surveys is displayed first, followed by the range of minimum and maximum survey dates selected by the user. Then, the total number of selected weekdays and weekend days in the selected set of surveys are shown. Finally, the number of survey days that have been manually removed from the selected set outside of the standard filtering procedure are displayed.

TRIP RATE for Land Use 06 - HOTEL, FOOD & DRINK/A - HOTELS
MULTI-MODAL TOTAL RAIL PASSENGERS

Calculation factor: 1 BEDRMS

Estimated TRIP rate value per 24 BEDRMS shown in shaded columns

BOLD print indicates peak (busiest) period

Time Range	ARRIVALS				DEPARTURES				TOTALS			
	No. Days	Ave. BEDRMS	Trip Rate	Estimated Trip Rate	No. Days	Ave. BEDRMS	Trip Rate	Estimated Trip Rate	No. Days	Ave. BEDRMS	Trip Rate	Estimated Trip Rate
00:00 - 01:00												
01:00 - 02:00												
02:00 - 03:00												
03:00 - 04:00												
04:00 - 05:00												
05:00 - 06:00												
06:00 - 07:00	1	107	0.000	0.000	1	107	0.000	0.000	1	107	0.000	0.000
07:00 - 08:00	4	126	0.022	0.526	4	126	0.042	1.004	4	126	0.064	1.530
08:00 - 09:00	4	126	0.022	0.526	4	126	0.028	0.669	4	126	0.050	1.195
09:00 - 10:00	4	126	0.022	0.526	4	126	0.161	3.873	4	126	0.183	4.399
10:00 - 11:00	4	126	0.010	0.239	4	126	0.118	2.821	4	126	0.128	3.060
11:00 - 12:00	4	126	0.024	0.574	4	126	0.076	1.817	4	126	0.100	2.391
12:00 - 13:00	4	126	0.018	0.430	4	126	0.042	1.004	4	126	0.060	1.434
13:00 - 14:00	4	126	0.028	0.669	4	126	0.008	0.191	4	126	0.036	0.860
14:00 - 15:00	4	126	0.042	1.004	4	126	0.020	0.478	4	126	0.062	1.482
15:00 - 16:00	4	126	0.042	1.004	4	126	0.048	1.147	4	126	0.090	2.151
16:00 - 17:00	4	126	0.082	1.960	4	126	0.030	0.717	4	126	0.112	2.677
17:00 - 18:00	4	126	0.066	1.578	4	126	0.038	0.908	4	126	0.104	2.486
18:00 - 19:00	4	126	0.080	1.912	4	126	0.060	1.434	4	126	0.140	3.346
19:00 - 20:00	4	126	0.122	2.916	4	126	0.036	0.861	4	126	0.158	3.777
20:00 - 21:00	4	126	0.124	2.964	4	126	0.024	0.574	4	126	0.148	3.538
21:00 - 22:00	4	126	0.074	1.769	4	126	0.000	0.000	4	126	0.074	1.769
22:00 - 23:00												
23:00 - 24:00												
Total Rates:			0.778	18.597			0.731	17.498			1.509	36.095

This section displays the trip rate results based on the selected set of surveys and the selected count type (shown just above the table). It is split by three main columns, representing arrivals trips, departures trips, and total trips (arrivals plus departures). Within each of these main columns are three sub-columns. These display the number of survey days where count data is included (per time period), the average value of the selected trip rate calculation parameter (per time period), and the trip rate result (per time period). Total trip rates (the sum of the column) are also displayed at the foot of the table.

To obtain a trip rate, the average (mean) trip rate parameter value (TRP) is first calculated for all selected survey days that have count data available for the stated time period. The average (mean) number of arrivals, departures or totals (whichever applies) is also calculated (COUNT) for all selected survey days that have count data available for the stated time period. Then, the average count is divided by the average trip rate parameter value, and multiplied by the stated calculation factor (shown just above the table and abbreviated here as FACT). So, the method is: COUNT/TRP*FACT. Trip rates are then rounded to 3 decimal places.

Parameter summary

Trip rate parameter range selected:	96 - 151 (units:)
Survey date range:	01/01/08 - 29/11/13
Number of weekdays (Monday-Friday):	4
Number of Saturdays:	0
Number of Sundays:	0
Surveys automatically removed from selection:	2
Surveys manually removed from selection:	0

This section displays a quick summary of some of the data filtering selections made by the TRICS® user. The trip rate calculation parameter range of all selected surveys is displayed first, followed by the range of minimum and maximum survey dates selected by the user. Then, the total number of selected weekdays and weekend days in the selected set of surveys are shown. Finally, the number of survey days that have been manually removed from the selected set outside of the standard filtering procedure are displayed.

TRIP RATE for Land Use 06 - HOTEL, FOOD & DRINK/A - HOTELS

MULTI-MODAL COACH PASSENGERS

Calculation factor: 1 BEDRMS

Estimated TRIP rate value per 24 BEDRMS shown in shaded columns

BOLD print indicates peak (busiest) period

Time Range	ARRIVALS				DEPARTURES				TOTALS			
	No. Days	Ave. BEDRMS	Trip Rate	Estimated Trip Rate	No. Days	Ave. BEDRMS	Trip Rate	Estimated Trip Rate	No. Days	Ave. BEDRMS	Trip Rate	Estimated Trip Rate
00:00 - 01:00												
01:00 - 02:00												
02:00 - 03:00												
03:00 - 04:00												
04:00 - 05:00												
05:00 - 06:00												
06:00 - 07:00	1	107	0.000	0.000	1	107	0.000	0.000	1	107	0.000	0.000
07:00 - 08:00	4	126	0.004	0.096	4	126	0.010	0.239	4	126	0.014	0.335
08:00 - 09:00	4	126	0.004	0.096	4	126	0.171	4.112	4	126	0.175	4.208
09:00 - 10:00	4	126	0.000	0.000	4	126	0.000	0.000	4	126	0.000	0.000
10:00 - 11:00	4	126	0.002	0.048	4	126	0.000	0.000	4	126	0.002	0.048
11:00 - 12:00	4	126	0.000	0.000	4	126	0.000	0.000	4	126	0.000	0.000
12:00 - 13:00	4	126	0.000	0.000	4	126	0.000	0.000	4	126	0.000	0.000
13:00 - 14:00	4	126	0.000	0.000	4	126	0.000	0.000	4	126	0.000	0.000
14:00 - 15:00	4	126	0.000	0.000	4	126	0.000	0.000	4	126	0.000	0.000
15:00 - 16:00	4	126	0.000	0.000	4	126	0.000	0.000	4	126	0.000	0.000
16:00 - 17:00	4	126	0.002	0.048	4	126	0.000	0.000	4	126	0.002	0.048
17:00 - 18:00	4	126	0.000	0.000	4	126	0.000	0.000	4	126	0.000	0.000
18:00 - 19:00	4	126	0.000	0.000	4	126	0.002	0.048	4	126	0.002	0.048
19:00 - 20:00	4	126	0.000	0.000	4	126	0.000	0.000	4	126	0.000	0.000
20:00 - 21:00	4	126	0.000	0.000	4	126	0.000	0.000	4	126	0.000	0.000
21:00 - 22:00	4	126	0.199	4.781	4	126	0.000	0.000	4	126	0.199	4.781
22:00 - 23:00												
23:00 - 24:00												
Total Rates:			0.211	5.069			0.183	4.399			0.394	9.468

This section displays the trip rate results based on the selected set of surveys and the selected count type (shown just above the table). It is split by three main columns, representing arrivals trips, departures trips, and total trips (arrivals plus departures). Within each of these main columns are three sub-columns. These display the number of survey days where count data is included (per time period), the average value of the selected trip rate calculation parameter (per time period), and the trip rate result (per time period). Total trip rates (the sum of the column) are also displayed at the foot of the table.

To obtain a trip rate, the average (mean) trip rate parameter value (TRP) is first calculated for all selected survey days that have count data available for the stated time period. The average (mean) number of arrivals, departures or totals (whichever applies) is also calculated (COUNT) for all selected survey days that have count data available for the stated time period. Then, the average count is divided by the average trip rate parameter value, and multiplied by the stated calculation factor (shown just above the table and abbreviated here as FACT). So, the method is: COUNT/TRP*FACT. Trip rates are then rounded to 3 decimal places.

Parameter summary

Trip rate parameter range selected:	96 - 151 (units:)
Survey date range:	01/01/08 - 29/11/13
Number of weekdays (Monday-Friday):	4
Number of Saturdays:	0
Number of Sundays:	0
Surveys automatically removed from selection:	2
Surveys manually removed from selection:	0

This section displays a quick summary of some of the data filtering selections made by the TRICS® user. The trip rate calculation parameter range of all selected surveys is displayed first, followed by the range of minimum and maximum survey dates selected by the user. Then, the total number of selected weekdays and weekend days in the selected set of surveys are shown. Finally, the number of survey days that have been manually removed from the selected set outside of the standard filtering procedure are displayed.

TRIP RATE for Land Use 06 - HOTEL, FOOD & DRINK/A - HOTELS
MULTI-MODAL PUBLIC TRANSPORT USERS

Calculation factor: 1 BEDRMS

Estimated TRIP rate value per 24 BEDRMS shown in shaded columns

BOLD print indicates peak (busiest) period

Time Range	ARRIVALS				DEPARTURES				TOTALS			
	No. Days	Ave. BEDRMS	Trip Rate	Estimated Trip Rate	No. Days	Ave. BEDRMS	Trip Rate	Estimated Trip Rate	No. Days	Ave. BEDRMS	Trip Rate	Estimated Trip Rate
00:00 - 01:00												
01:00 - 02:00												
02:00 - 03:00												
03:00 - 04:00												
04:00 - 05:00												
05:00 - 06:00												
06:00 - 07:00	1	107	0.009	0.224	1	107	0.009	0.224	1	107	0.018	0.448
07:00 - 08:00	4	126	0.034	0.813	4	126	0.062	1.482	4	126	0.096	2.295
08:00 - 09:00	4	126	0.038	0.908	4	126	0.211	5.068	4	126	0.249	5.976
09:00 - 10:00	4	126	0.028	0.669	4	126	0.181	4.351	4	126	0.209	5.020
10:00 - 11:00	4	126	0.018	0.430	4	126	0.118	2.821	4	126	0.136	3.251
11:00 - 12:00	4	126	0.040	0.956	4	126	0.094	2.247	4	126	0.134	3.203
12:00 - 13:00	4	126	0.024	0.574	4	126	0.046	1.100	4	126	0.070	1.674
13:00 - 14:00	4	126	0.036	0.861	4	126	0.024	0.574	4	126	0.060	1.435
14:00 - 15:00	4	126	0.048	1.147	4	126	0.036	0.861	4	126	0.084	2.008
15:00 - 16:00	4	126	0.062	1.482	4	126	0.062	1.482	4	126	0.124	2.964
16:00 - 17:00	4	126	0.092	2.199	4	126	0.046	1.100	4	126	0.138	3.299
17:00 - 18:00	4	126	0.080	1.912	4	126	0.056	1.339	4	126	0.136	3.251
18:00 - 19:00	4	126	0.096	2.295	4	126	0.070	1.673	4	126	0.166	3.968
19:00 - 20:00	4	126	0.135	3.251	4	126	0.044	1.052	4	126	0.179	4.303
20:00 - 21:00	4	126	0.139	3.347	4	126	0.034	0.813	4	126	0.173	4.160
21:00 - 22:00	4	126	0.281	6.741	4	126	0.002	0.048	4	126	0.283	6.789
22:00 - 23:00												
23:00 - 24:00												
Total Rates:			1.160	27.809			1.095	26.235			2.255	54.044

This section displays the trip rate results based on the selected set of surveys and the selected count type (shown just above the table). It is split by three main columns, representing arrivals trips, departures trips, and total trips (arrivals plus departures). Within each of these main columns are three sub-columns. These display the number of survey days where count data is included (per time period), the average value of the selected trip rate calculation parameter (per time period), and the trip rate result (per time period). Total trip rates (the sum of the column) are also displayed at the foot of the table.

To obtain a trip rate, the average (mean) trip rate parameter value (TRP) is first calculated for all selected survey days that have count data available for the stated time period. The average (mean) number of arrivals, departures or totals (whichever applies) is also calculated (COUNT) for all selected survey days that have count data available for the stated time period. Then, the average count is divided by the average trip rate parameter value, and multiplied by the stated calculation factor (shown just above the table and abbreviated here as FACT). So, the method is: COUNT/TRP*FACT. Trip rates are then rounded to 3 decimal places.

Parameter summary

Trip rate parameter range selected: 96 - 151 (units:)
 Survey date range: 01/01/08 - 29/11/13
 Number of weekdays (Monday-Friday): 4
 Number of Saturdays: 0
 Number of Sundays: 0
 Surveys automatically removed from selection: 2
 Surveys manually removed from selection: 0

This section displays a quick summary of some of the data filtering selections made by the TRICS® user. The trip rate calculation parameter range of all selected surveys is displayed first, followed by the range of minimum and maximum survey dates selected by the user. Then, the total number of selected weekdays and weekend days in the selected set of surveys are shown. Finally, the number of survey days that have been manually removed from the selected set outside of the standard filtering procedure are displayed.

TRIP RATE for Land Use 06 - HOTEL, FOOD & DRINK/A - HOTELS

MULTI-MODAL TOTAL PEOPLE

Calculation factor: 1 BEDRMS

Estimated TRIP rate value per 24 BEDRMS shown in shaded columns

BOLD print indicates peak (busiest) period

Time Range	ARRIVALS				DEPARTURES				TOTALS			
	No. Days	Ave. BEDRMS	Trip Rate	Estimated Trip Rate	No. Days	Ave. BEDRMS	Trip Rate	Estimated Trip Rate	No. Days	Ave. BEDRMS	Trip Rate	Estimated Trip Rate
00:00 - 01:00												
01:00 - 02:00												
02:00 - 03:00												
03:00 - 04:00												
04:00 - 05:00												
05:00 - 06:00												
06:00 - 07:00	1	107	0.056	1.346	1	107	0.234	5.607	1	107	0.290	6.953
07:00 - 08:00	4	126	0.098	2.343	4	126	0.239	5.737	4	126	0.337	8.080
08:00 - 09:00	4	126	0.127	3.060	4	126	0.402	9.657	4	126	0.529	12.717
09:00 - 10:00	4	126	0.149	3.586	4	126	0.343	8.223	4	126	0.492	11.809
10:00 - 11:00	4	126	0.137	3.299	4	126	0.233	5.594	4	126	0.370	8.893
11:00 - 12:00	4	126	0.149	3.586	4	126	0.237	5.689	4	126	0.386	9.275
12:00 - 13:00	4	126	0.143	3.442	4	126	0.147	3.538	4	126	0.290	6.980
13:00 - 14:00	4	126	0.131	3.155	4	126	0.124	2.964	4	126	0.255	6.119
14:00 - 15:00	4	126	0.112	2.677	4	126	0.167	4.016	4	126	0.279	6.693
15:00 - 16:00	4	126	0.233	5.594	4	126	0.199	4.781	4	126	0.432	10.375
16:00 - 17:00	4	126	0.261	6.263	4	126	0.137	3.299	4	126	0.398	9.562
17:00 - 18:00	4	126	0.221	5.307	4	126	0.199	4.781	4	126	0.420	10.088
18:00 - 19:00	4	126	0.331	7.936	4	126	0.279	6.693	4	126	0.610	14.629
19:00 - 20:00	4	126	0.444	10.661	4	126	0.241	5.785	4	126	0.685	16.446
20:00 - 21:00	4	126	0.375	8.988	4	126	0.187	4.494	4	126	0.562	13.482
21:00 - 22:00	4	126	0.681	16.351	4	126	0.151	3.633	4	126	0.832	19.984
22:00 - 23:00	1	107	0.000	0.000	1	107	0.000	0.000	1	107	0.000	0.000
23:00 - 24:00	1	107	0.000	0.000	1	107	0.000	0.000	1	107	0.000	0.000
Total Rates:			3.648	87.594			3.519	84.491			7.167	172.085

This section displays the trip rate results based on the selected set of surveys and the selected count type (shown just above the table). It is split by three main columns, representing arrivals trips, departures trips, and total trips (arrivals plus departures). Within each of these main columns are three sub-columns. These display the number of survey days where count data is included (per time period), the average value of the selected trip rate calculation parameter (per time period), and the trip rate result (per time period). Total trip rates (the sum of the column) are also displayed at the foot of the table.

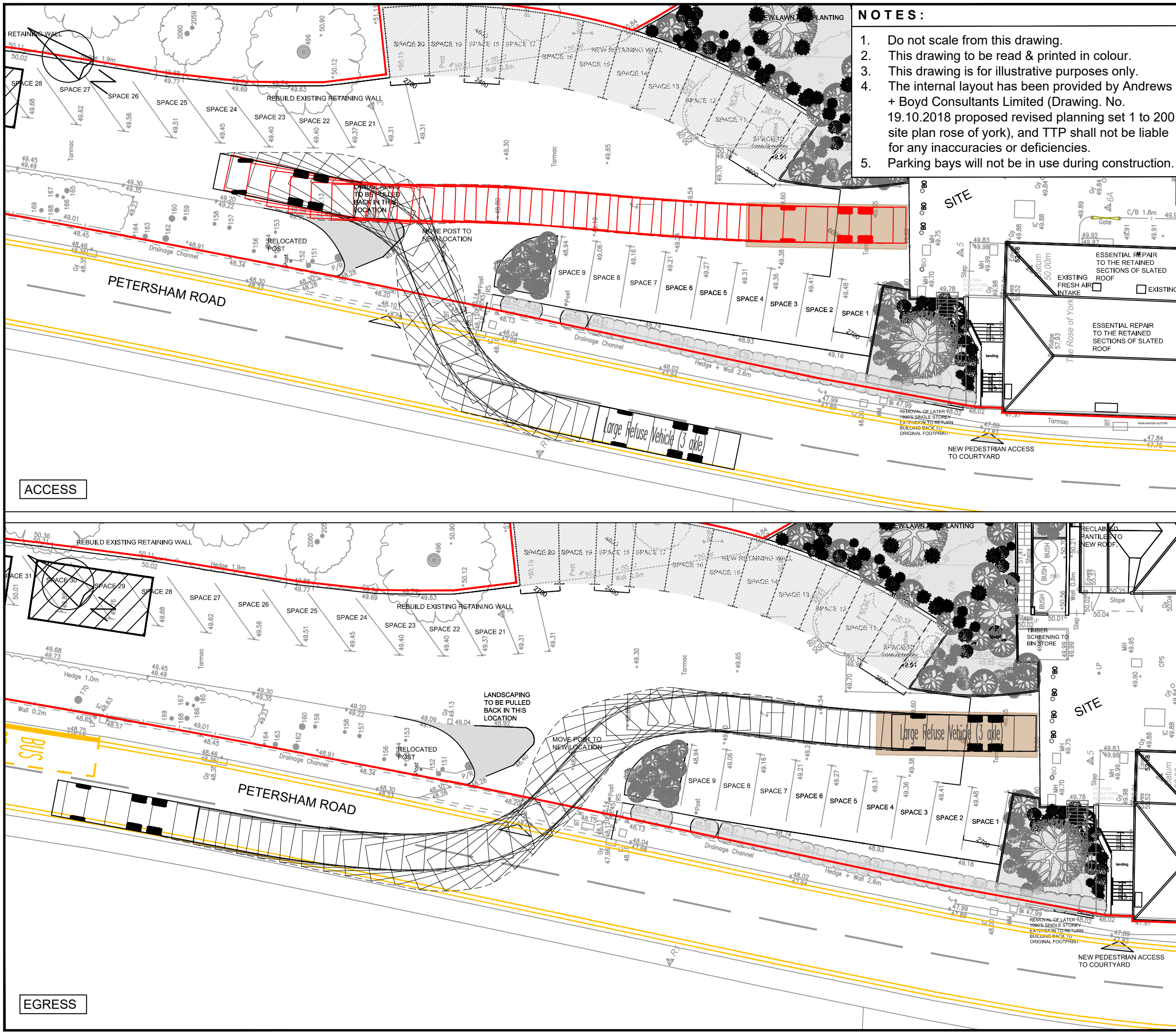
To obtain a trip rate, the average (mean) trip rate parameter value (TRP) is first calculated for all selected survey days that have count data available for the stated time period. The average (mean) number of arrivals, departures or totals (whichever applies) is also calculated (COUNT) for all selected survey days that have count data available for the stated time period. Then, the average count is divided by the average trip rate parameter value, and multiplied by the stated calculation factor (shown just above the table and abbreviated here as FACT). So, the method is: COUNT/TRP*FACT. Trip rates are then rounded to 3 decimal places.

Parameter summary

Trip rate parameter range selected: 96 - 151 (units:)
 Survey date range: 01/01/08 - 29/11/13
 Number of weekdays (Monday-Friday): 4
 Number of Saturdays: 0
 Number of Sundays: 0
 Surveys automatically removed from selection: 2
 Surveys manually removed from selection: 0

This section displays a quick summary of some of the data filtering selections made by the TRICS® user. The trip rate calculation parameter range of all selected surveys is displayed first, followed by the range of minimum and maximum survey dates selected by the user. Then, the total number of selected weekdays and weekend days in the selected set of surveys are shown. Finally, the number of survey days that have been manually removed from the selected set outside of the standard filtering procedure are displayed.

APPENDIX E

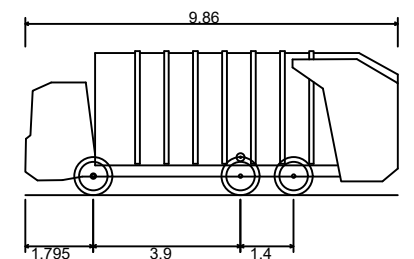


NOTES:

1. Do not scale from this drawing.
2. This drawing to be read & printed in colour.
3. This drawing is for illustrative purposes only.
4. The internal layout has been provided by Andrews + Boyd Consultants Limited (Drawing. No. 19.10.2018 proposed revised planning set 1 to 200 site plan rose of york), and TTP shall not be liable for any inaccuracies or deficiencies.
5. Parking bays will not be in use during construction.

Rev	Details	Drawn	Checked	Date
A	Layout & tracking updated	AS	DF	15.11.2018

VEHICLE DETAILS:



LARGE REFUSE VEHICLE (3 AXLE)

Overall Length	9.860m
Overall Width	2.450m
Overall Body Height	3.814m
Min Body Ground Clearance	0.366m
Max Track Width	2.450m
Lock to Lock Time	4.00s
Kerb to Kerb Turning Radius	9.500m

	FORWARD MOVEMENTS ARE SHOWN IN BLACK (design speed for all forward movements - 5kph)
	REVERSE MOVEMENTS ARE SHOWN IN RED (design speed for all reverse movements - 2.5kph)

Client
...

Project
Rose of York PH ,
Petersham Road , Richmond

Drawing Title
Swept Path Analysis using a
Large Refuse Vehicle

Scale	1:250	Size	A3
Drawn	AS	14.11.2018	
Checked	EC	14.11.2018	



111 - 113 Great Portland Street
London
W1W 6QQ
Tel. No. 0207 1000 753

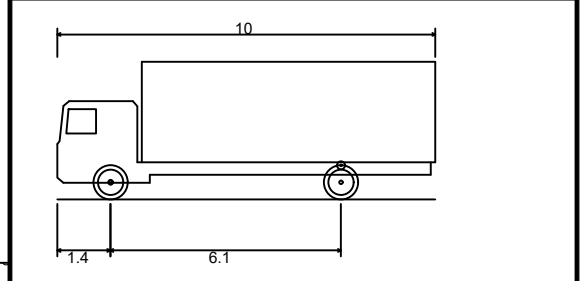
Drawing Number	2016-2990-006	Rev	A
----------------	---------------	-----	---



- NOTES:**
1. Do not scale from this drawing.
 2. This drawing to be read & printed in colour.
 3. This drawing is for illustrative purposes only.
 4. The internal layout has been provided by Andrews + Boyd Consultants Limited (Drawing. No. 19.10.2018 proposed revised planning set 1 to 200 site plan rose of york), and TTP shall not be liable for any inaccuracies or deficiencies.
 5. Parking bays will not be in use during construction.

Rev	Details	Drawn	Checked	Date
A	Layout & tracking updated	AS	DF	15.11.2018

VEHICLE DETAILS:

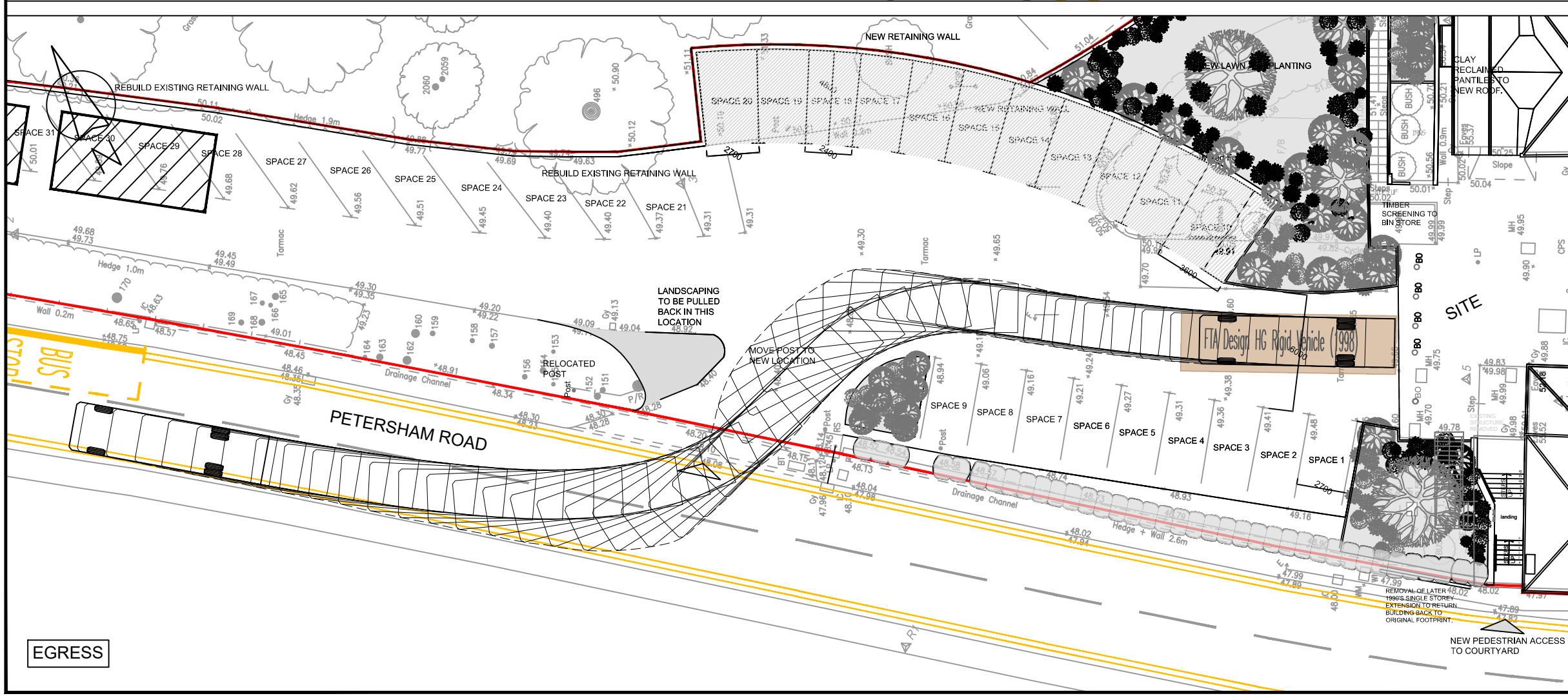


FTA DESIGN HG RIGID VEHICLE (1998)

Overall Length	10.000m
Overall Width	2.500m
Overall Body Height	3.645m
Min Body Ground Clearance	0.440m
Track Width	2.470m
Lock to Lock Time	3.00s
Kerb to Kerb Turning Radius	11.000m

FORWARD MOVEMENTS ARE SHOWN IN BLACK
(design speed for all forward movements - 5kph)

REVERSE MOVEMENTS ARE SHOWN IN RED
(design speed for all reverse movements - 2.5kph)



Client ...

Project
Rose of York PH , Petersham Road , Richmond

Drawing Title
Swept Path Analysis using a 10m Rigid HGV

Scale	1:250	Size	A3
Drawn	AS	Checked	EC
Drawn	AS	Checked	EC
Drawn	AS	Checked	EC



111 - 113 Great Portland Street
London
W1W 6QQ
Tel. No. 0207 1000 753

Drawing Number	2016-2990-008	Rev	A
----------------	---------------	-----	---