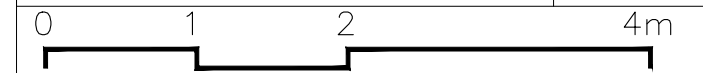


A3 Scale 1:50



REVISIONS	
A 04.02.22	Proposed dormer window shown as translucent and not operable below 1.7m from FFL

DRAWING NUMBER: 20.142.112

THIS DRAWING IS COPYRIGHT ++ ALL RIGHTS RESERVED ++ ALL MEASUREMENTS ARE IN MM UNLESS SPECIFICALLY STATED ++ DO NOT SCALE FROM THIS DRAWING UNLESS FOR PLANNING PURPOSES ++ PROPERTY BOUNDARIES ARE ASSUMED FROM ON-SITE MEASUREMENTS AND OS MAP BOUNDARY POSITIONS AND ARE INDICATIVE ONLY ++ DO NOT TAKE MEASUREMENTS FROM THIS DRAWING ++ DO NOT USE THIS DRAWING TO CALCULATE MATERIAL QUANTITIES OR ORDERS ++ DO NOT USE THIS DRAWING TO CALCULATE DETAILED OR FIXED CONSTRUCTION COSTS ++ ALL MEASUREMENTS ARE ACCURATE ON TIME OF ISSUE. IT IS THE CONTRACTOR'S RESPONSIBILITY TO CHECK ALL MEASUREMENTS ON SITE PRIOR TO THE ORDERING AND FABRICATION OF ANY MATERIALS ++ THIS DRAWING SHOULD BE READ IN CONJUNCTION WITH STRUCTURAL ENGINEERS DRAWINGS ++ THIS DRAWING SHOULD BE READ IN CONJUNCTION WITH SERVICE ENGINEERS DRAWINGS ++ ANY DISCREPANCY FOUND BETWEEN THIS DRAWING AND ANY OTHER DOCUMENTS MUST BE REPORTED IMMEDIATELY BY THE CONTRACTOR

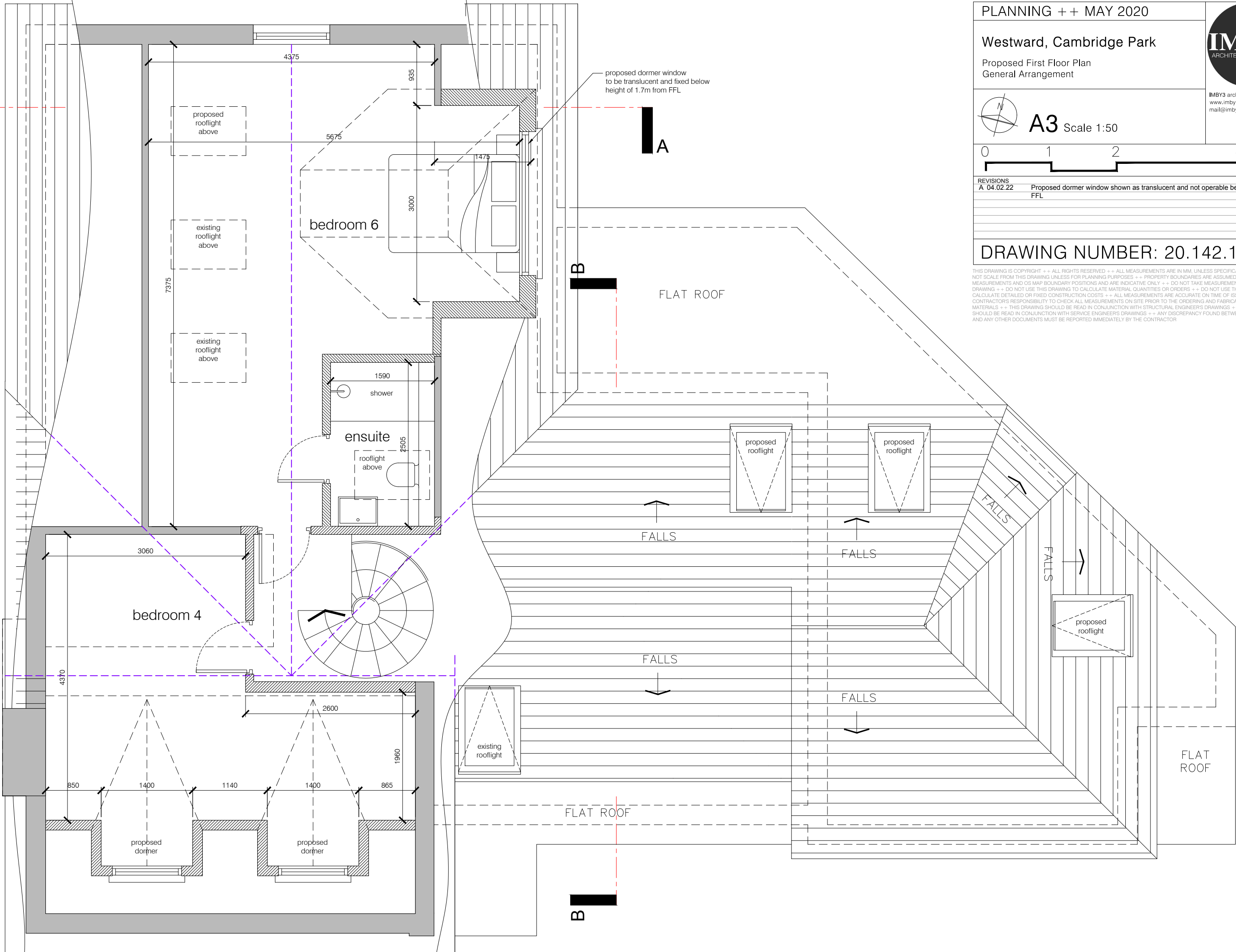
A

A

B

B

proposed dormer window to be translucent and fixed below height of 1.7m from FFL



proposed rooflight above

existing rooflight above

existing rooflight above

bedroom 6

shower

ensuite

rooflight above

bedroom 4

existing rooflight

proposed rooflight

proposed rooflight

proposed rooflight

FALLS

FALLS

FALLS

FALLS

FALLS

FALLS

FLAT ROOF

FLAT ROOF

proposed dormer

proposed dormer

4375

935

5675

1475

3000

7375

1590

2505

3060

4370

2600

1960

850

1400

1140

1400

865