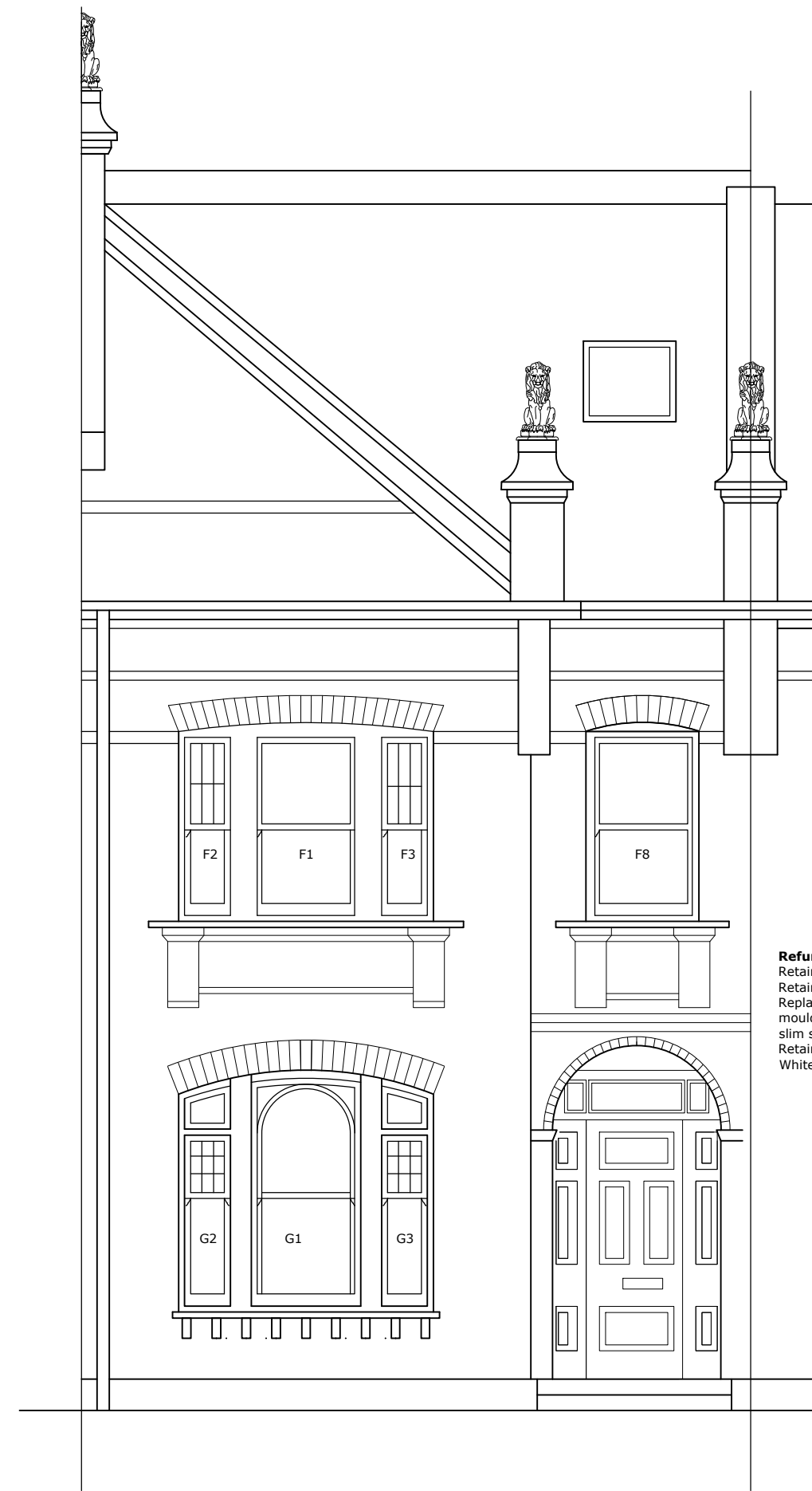




REAR ELEVATION

Refurbishment of windows
 Retain and repair/refurbish sash boxes
 Retain and repair cills (except where shown)
 Replace sashes with new sashes with
 mouldings/details to match originals, with
 slim sealed double glazed units.
 Retain pulleys, weights. Replace cords.
 White painted finish.



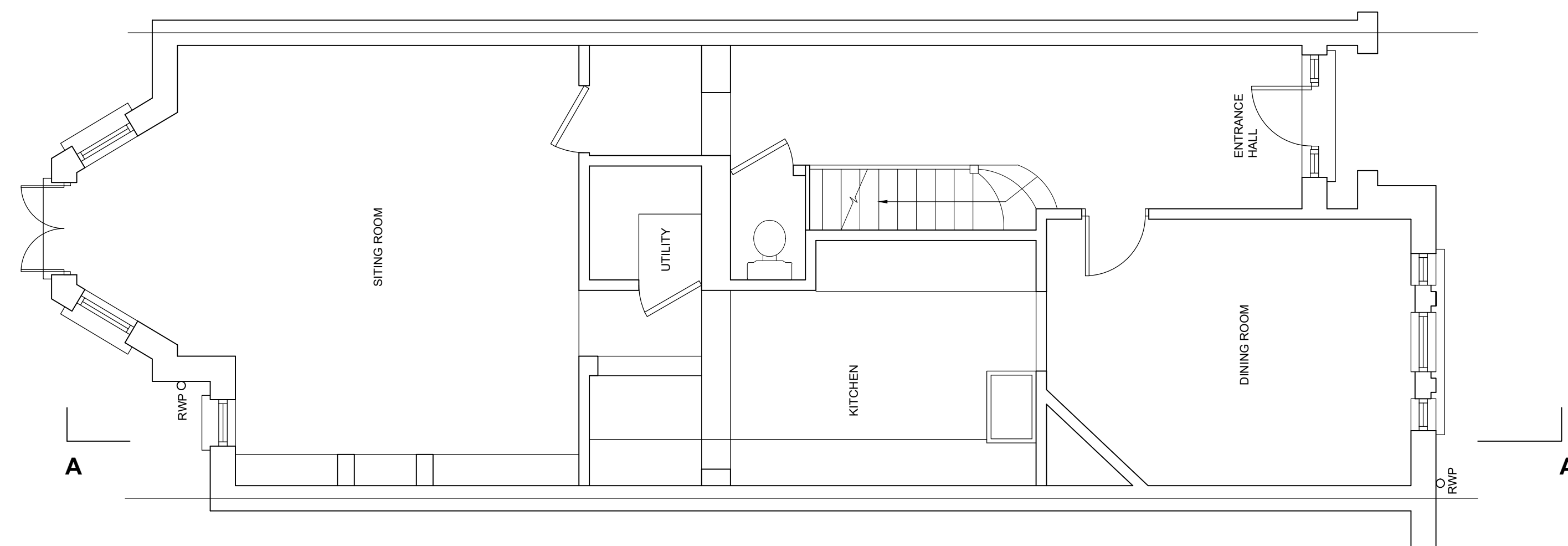
FRONT ELEVATION

Refurbishment of windows
 Retain and repair/refurbish sash boxes
 Retain and repair cills (except where shown)
 Replace sashes with new sashes with
 mouldings/details to match originals, with
 slim sealed double glazed units.
 Retain pulleys, weights. Replace cords.
 White painted finish.

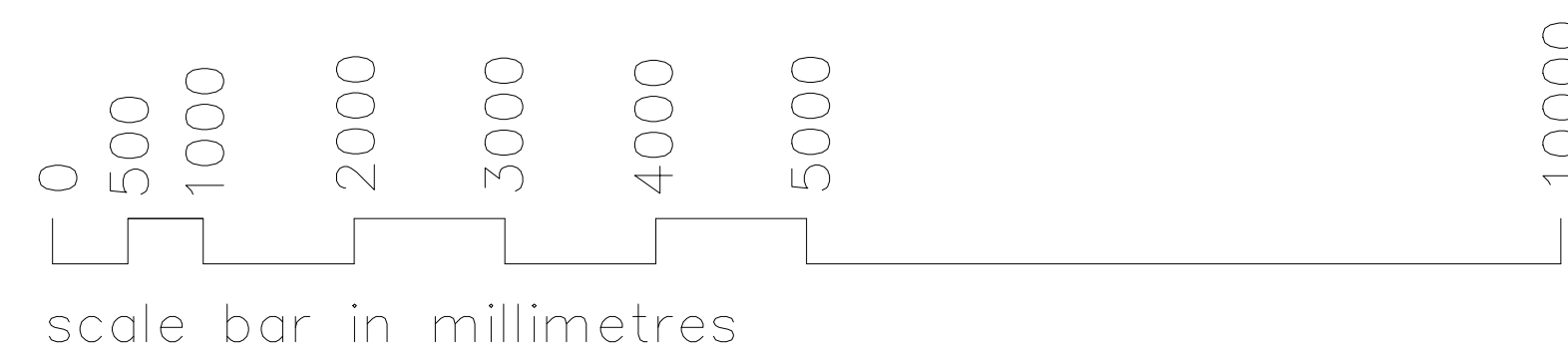


SIDE ELEVATION/SECTION AA

Refurbishment of windows
 Retain and repair/refurbish sash boxes
 Retain and repair cills (except where shown)
 Replace sashes with new sashes with
 mouldings/details to match originals, with
 slim sealed double glazed units.
 Retain pulleys, weights. Replace cords.
 White painted finish.




GROUND FLOOR PLAN



A Loft windows noted as white painted timber frames 09/02/2022

rev	description	date
-----	-------------	------

© Nigel Hartley 2021

 Chestnut Planning <small>architecture and town planning</small> 33 Trinity Church Road, Barnes, London, SW13 8ET T 07973753867 planning@chestnutplanning.co.uk chestnutplanning.co.uk	
client	ROGER HOODLESS
project	17 BELLEVUE ROAD
drawing	PROPOSED PLAN & ELEVATIONS
drawing status	planning
project no	669
scale	1/50 @ A3
drawing no	02
date	DEC 21
rev	A