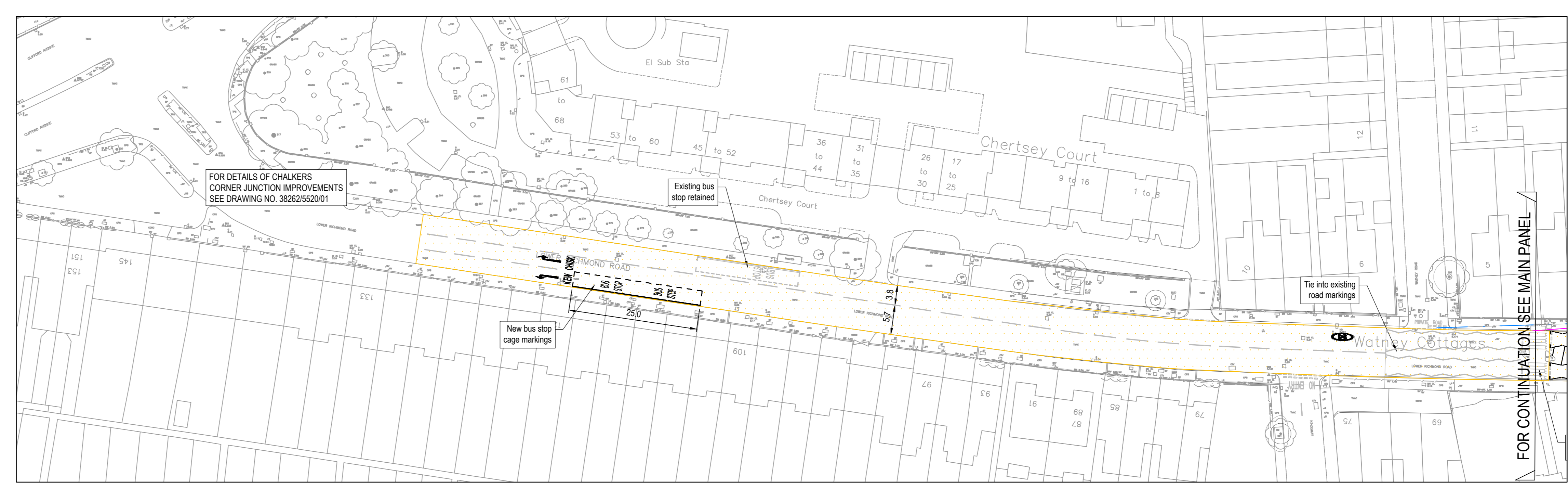


FOR CONTINUATION SEE INSET 1

FOR CONTINUATION SEE INSET 2



KEY

- AREA OVER WHICH UNOBSTRUCTED VISIBILITY MUST BE PROVIDED FOR:
 - PEDESTRIANS: 40m TO CROSSING 1.5m BEHIND KERB. AT 30mph (TRAFFIC SIGNS MANUAL CHAPTER 6)
 - CYCLISTS: 40m TO CROSSING 2.4m BEHIND KERB. AT 30mph (TRAFFIC SIGNS MANUAL CHAPTER 6)
 - VEHICLES: 70m TO PRIMARY SIGNAL HEAD AT 30mph (SEE TIL SPECIFICATION SOA-0064)
- MATURE TREES WHICH AFFECT VISIBILITY
- VISIBILITY SPLAYS AT ZEBRA CROSSING 1.5m BEHIND KERB. AT 30mph (SEE TRAFFIC SIGNS MANUAL CHAPTER 6)
- VISIBILITY SPLAYS AT JUNCTIONS 2.4m x 43m AT 25mph (MANUAL FOR STREETS)
- VISIBILITY SPLAYS AT JUNCTIONS 2.4m x 43m AT 30mph AND FORWARD VISIBILITY ON BENDS 25m AT 30mph (MANUAL FOR STREETS)
- FORWARD VISIBILITY ON BENDS 17m AT 15mph (MANUAL FOR STREETS)
- VEHICLE / PEDESTRIAN INTER-VISIBILITY AT CAR PARK EXITS 2.4m x 2.4m
- PROPOSED CARRIAGEWAY TO BE RESURFACED
- PROPOSED FOOTWAY AREAS TO BE REMOVED AND LANDSCAPED

Mark	Revision	Date	Drawn	Chkd	Appd
A	Masterplan updated & MHS layout revised. Level crossing added	07.03.22	REM	PW	PW

UTILITIES NOTE: The position of any existing public or private sewers, utility services, plant or apparatus shown on this drawing is believed to be correct, but no warranty is made as to its accuracy or depth. Other utility services or apparatus may also be present but not shown. The Contractor is therefore advised to undertake their own investigation where the presence of any existing sewers, services, plants or apparatus may affect their operations.

Drawing Issue Status: **FOR PLANNING**

**STAG BREWERY, MORTLAKE
PROPOSED HIGHWAY LAYOUT
LOWER RICHMOND RD/MORTLAKE HIGH ST**

Client: **RESELTON PROPERTIES LTD**

Stantec

Date of last issue	Designed	Checked	Approved
18.01.2022	REM	GD	PW

AD Scale: 1:500 @AD

Drawing Number: **38262/5520/02**

Revision: **A**

LONDON
Tel: 020 3824 6600