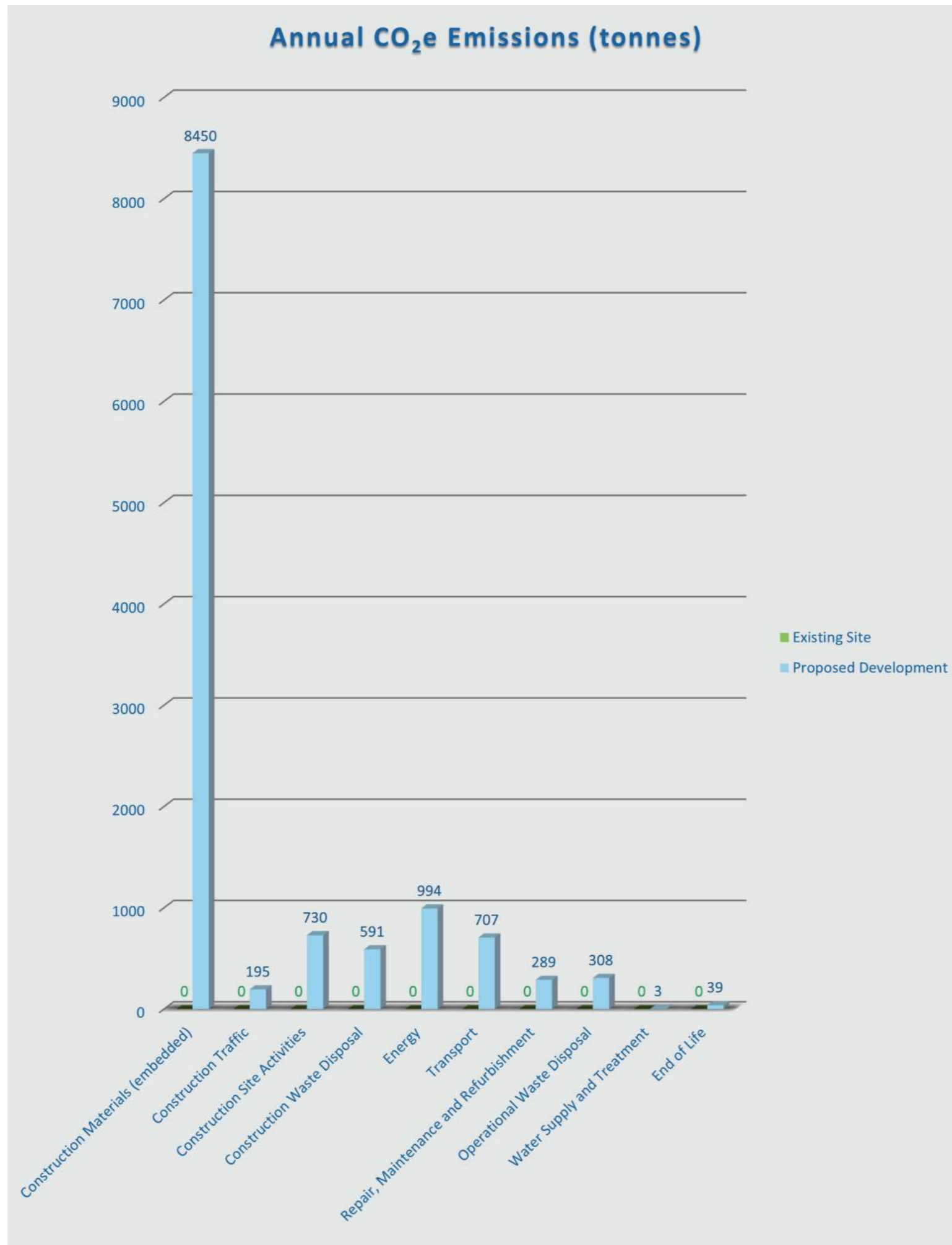


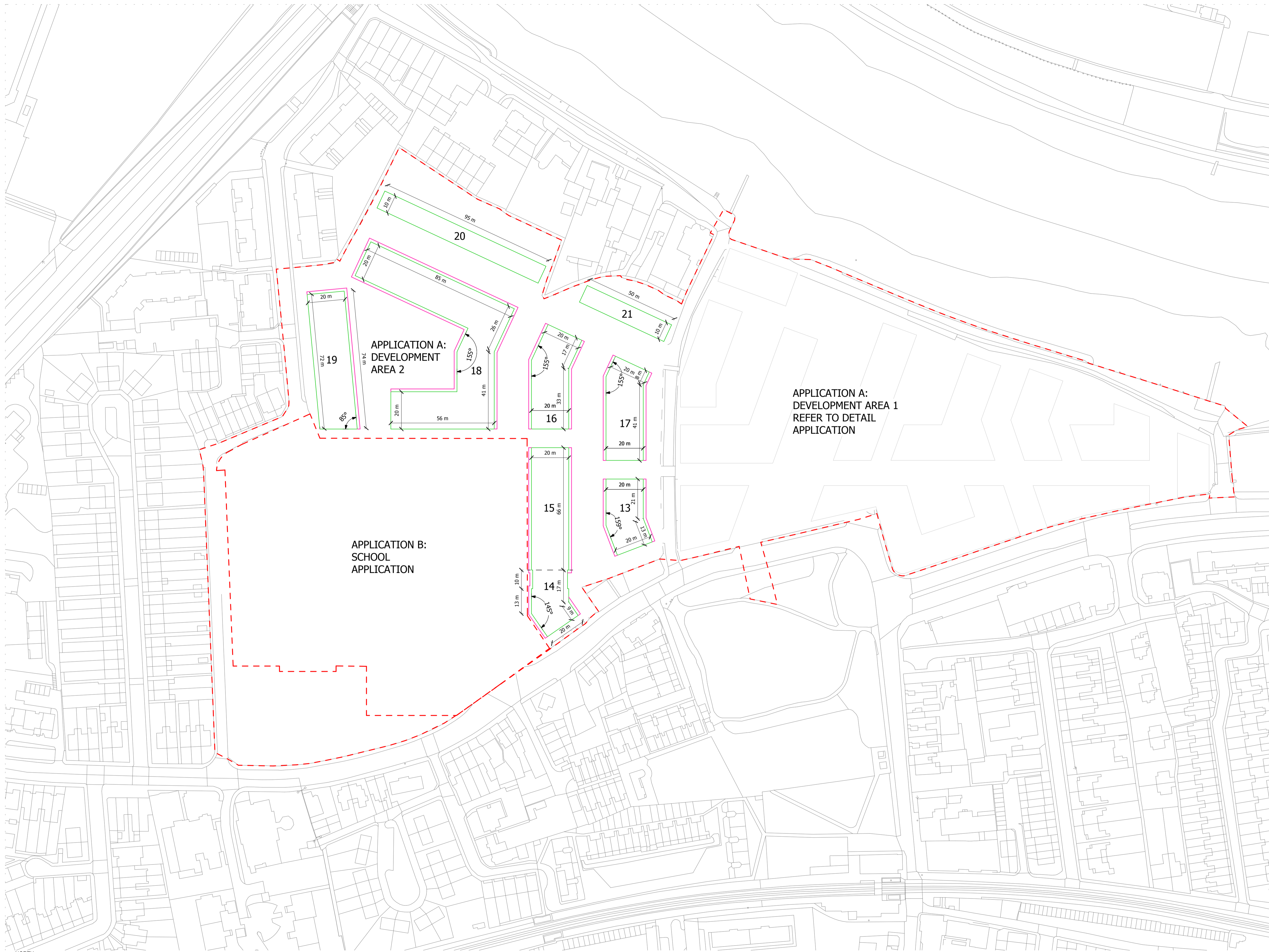
<b>Project Details</b>	WIE18671-100: Stag Brewery, Mortlake
<b>Figure Title</b>	Figure 18.1: Existing Sensitive Receptors for Daylight, Sunlight, and Overshadowing
<b>Figure Ref</b>	WIE18671-101_GR_ES_18.1A
<b>Date</b>	2022
<b>File Location</b>	N:\Projects\WIE18671\100\8_Reports\Graphics\3. ES\Issued Figures\PDF Folder
	<a href="http://www.watermangroup.com">www.watermangroup.com</a>



Project Details	WIE18761-100: Stag Brewery, Mortlake
Figure Title	Figure 19.1: Change in GHG Emissions from the Development (Opening Year 2029)
Figure Ref	WIE18761-100_GR_ES_19.1A
Date	2022
File Location	\\s-incs\wie\projects\wie18761\100\graphics\es\issued figures

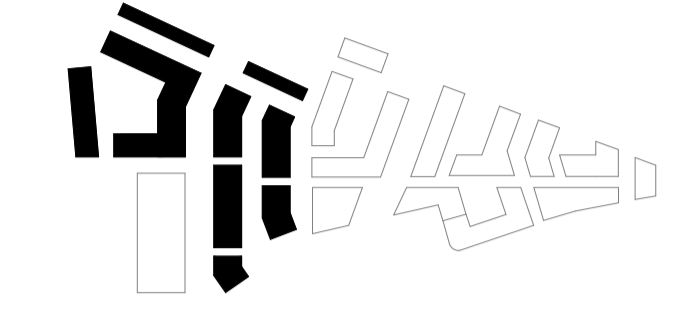
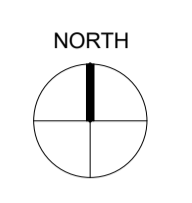


## Selection of Planning Application Drawings



NOTES:  
DO NOT SCALE FROM THIS DRAWING. ALL DIMENSIONS TO BE CHECKED ON SITE. ALL OMISSIONS AND DISCREPANCIES TO BE REPORTED TO THE ARCHITECT IMMEDIATELY.

ALL RIGHTS RESERVED. THIS WORK IS COPYRIGHT AND CANNOT BE REPRODUCED OR COPIED OR MODIFIED IN ANY FORM OR BY ANY MEANS, GRAPHIC ELECTRONIC OR MECHANICAL, INCLUDING PHOTOCOPYING WITHOUT THE WRITTEN PERMISSION OF SQUIRE AND PARTNERS ARCHITECTS.



- HORIZONTAL LIMITS OF DEVIATION
- MINIMUM BLOCK FOOTPRINT
  - UP TO +1.5M FROM MINIMUM BLOCK FOOTPRINT
  - UP TO +2.2M FROM MINIMUM BLOCK FOOTPRINT
  - UP TO +3.0M FROM MINIMUM BLOCK FOOTPRINT
  - - - BLOCKS BELOW
- 13-21** BLOCK NUMBER
- - - PLANNING APPLICATION BOUNDARY

\* REFER TO PARAGRAPH 3.1.1 ON PAGE 15 OF THE DESIGN CODE FOR RELEVANT DESIGN CODE CRITERIA WHICH MUST/SHOULD BE ADHERED TO

LBRUT 2 APPLICATION	25/02/22	BJ	E
FINAL DRAFT HYBRID SUBMISSION	12/01/22	RKB	D
GLA SUBMISSION	27/04/20	BJ	C
DRAFT GLA SUBMISSION	24/01/20	KH	B
FINAL DRAFT PLANNING APPLICATION	21/10/19	KH	A
LEGAL REVIEW	13/09/19	KH	-

Revision description	Date	Check	Rev

## SQUIRE & PARTNERS

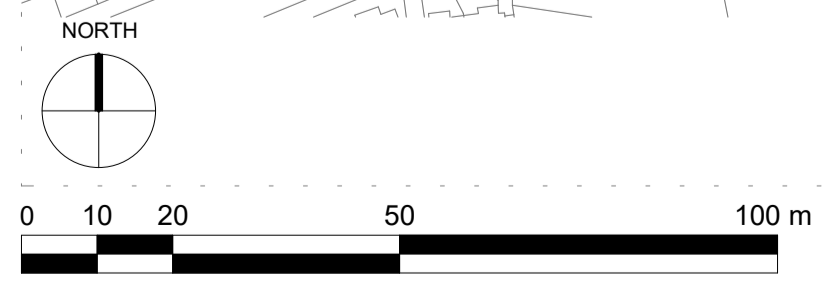
The Department Store  
248 Ferndale Road London SW9 8FR  
T: 020 7278 5555 F: 020 7239 0495

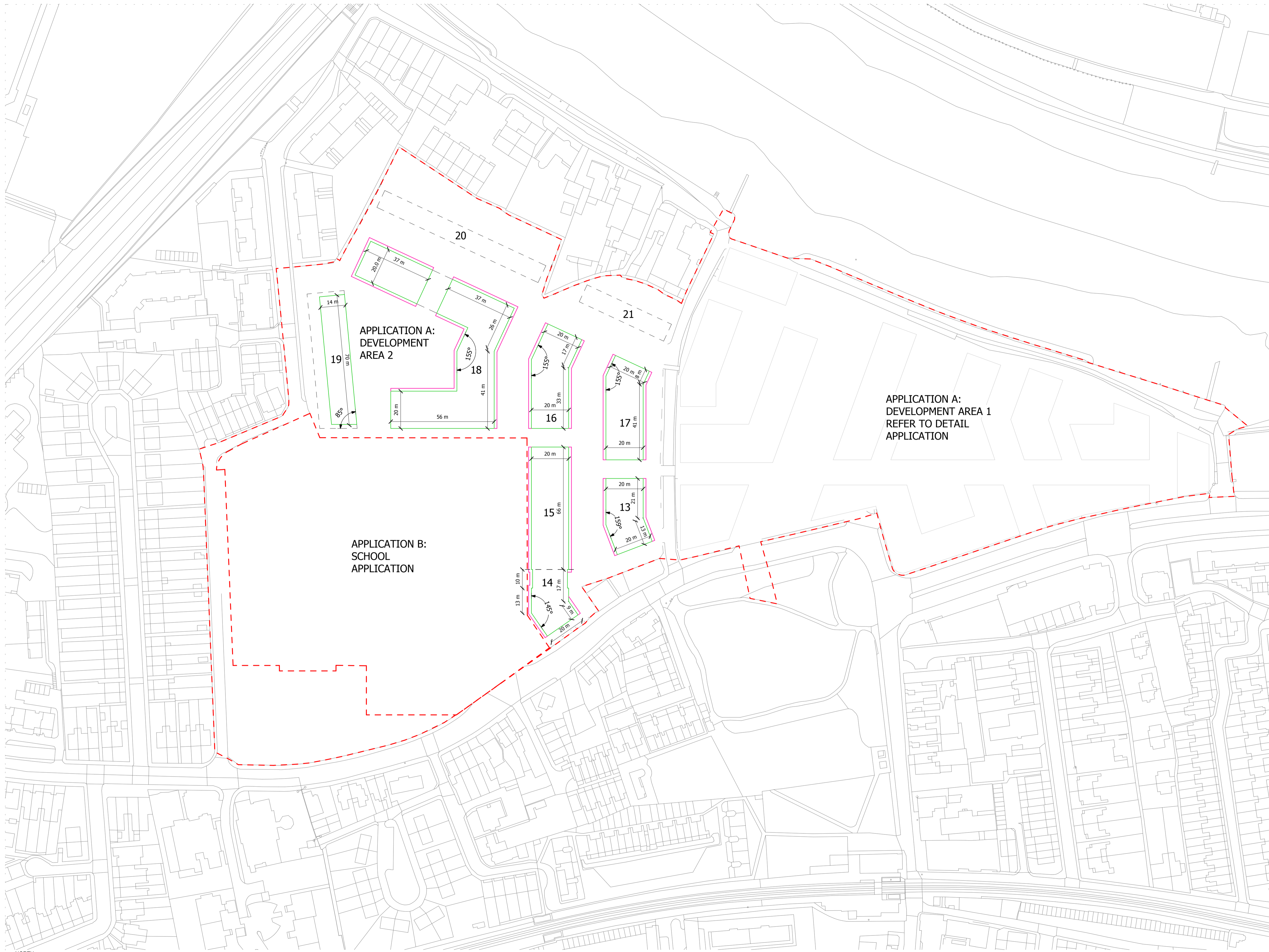
info@squireandpartners.com  
www.squireandpartners.com

Project  
**Stag Brewery**  
Richmond

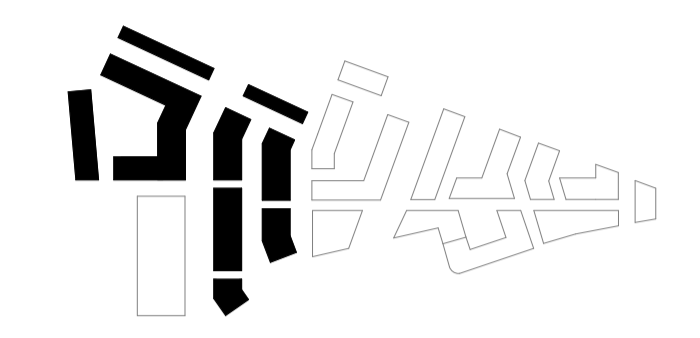
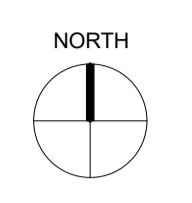
Drawing  
**BLOCK FOOTPRINT AND HORIZONTAL LINES OF DEVIATION**  
ONE TO THREE STOREYS

Drawn	Date	Scale
KHO	13/09/19	1 : 1000 @ A1 1 : 2000 @ A3
Job Number	Drawing number	Revision
18125	C645_Z2_P_PR_001	E





NOTES:  
 DO NOT SCALE FROM THIS DRAWING. ALL DIMENSIONS TO BE CHECKED ON SITE. ALL OMISSIONS AND DISCREPANCIES TO BE REPORTED TO THE ARCHITECT IMMEDIATELY.  
 ALL RIGHTS RESERVED. THIS WORK IS COPYRIGHT AND CANNOT BE REPRODUCED OR COPIED OR MODIFIED IN ANY FORM OR BY ANY MEANS, GRAPHIC ELECTRONIC OR MECHANICAL, INCLUDING PHOTOCOPYING WITHOUT THE WRITTEN PERMISSION OF SQUIRE AND PARTNERS ARCHITECTS.



- HORIZONTAL LIMITS OF DEVIATION
- MINIMUM BLOCK FOOTPRINT
  - UP TO +1.5M FROM MINIMUM BLOCK FOOTPRINT
  - UP TO +2.2M FROM MINIMUM BLOCK FOOTPRINT
  - UP TO +3.0M FROM MINIMUM BLOCK FOOTPRINT
  - - - BLOCKS BELOW
  - 13-21** BLOCK NUMBER
  - - - PLANNING APPLICATION BOUNDARY

\* REFER TO PARAGRAPH 3.1.1 ON PAGE 15 OF THE DESIGN CODE FOR RELEVANT DESIGN CODE CRITERIA WHICH MUST/SHOULD BE ADHERED TO

LBRUT 2 APPLICATION	25/02/22	RKB	E
FINAL DRAFT HYBRID SUBMISSION	12/01/22	RKB	D
GLA SUBMISSION	27/04/20	BJ	C
DRAFT GLA SUBMISSION	24/01/20	KH	B
FINAL DRAFT PLANNING APPLICATION	21/10/19	KH	A
LEGAL REVIEW	13/09/19	KH	-

Revision description	Date	Check	Rev
----------------------	------	-------	-----

## SQUIRE & PARTNERS

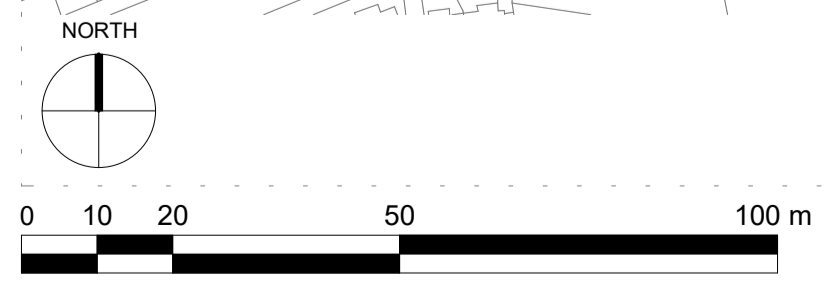
The Department Store  
 248 Ferndale Road London SW9 8FR  
 T: 020 7278 5555 F: 020 7239 0495

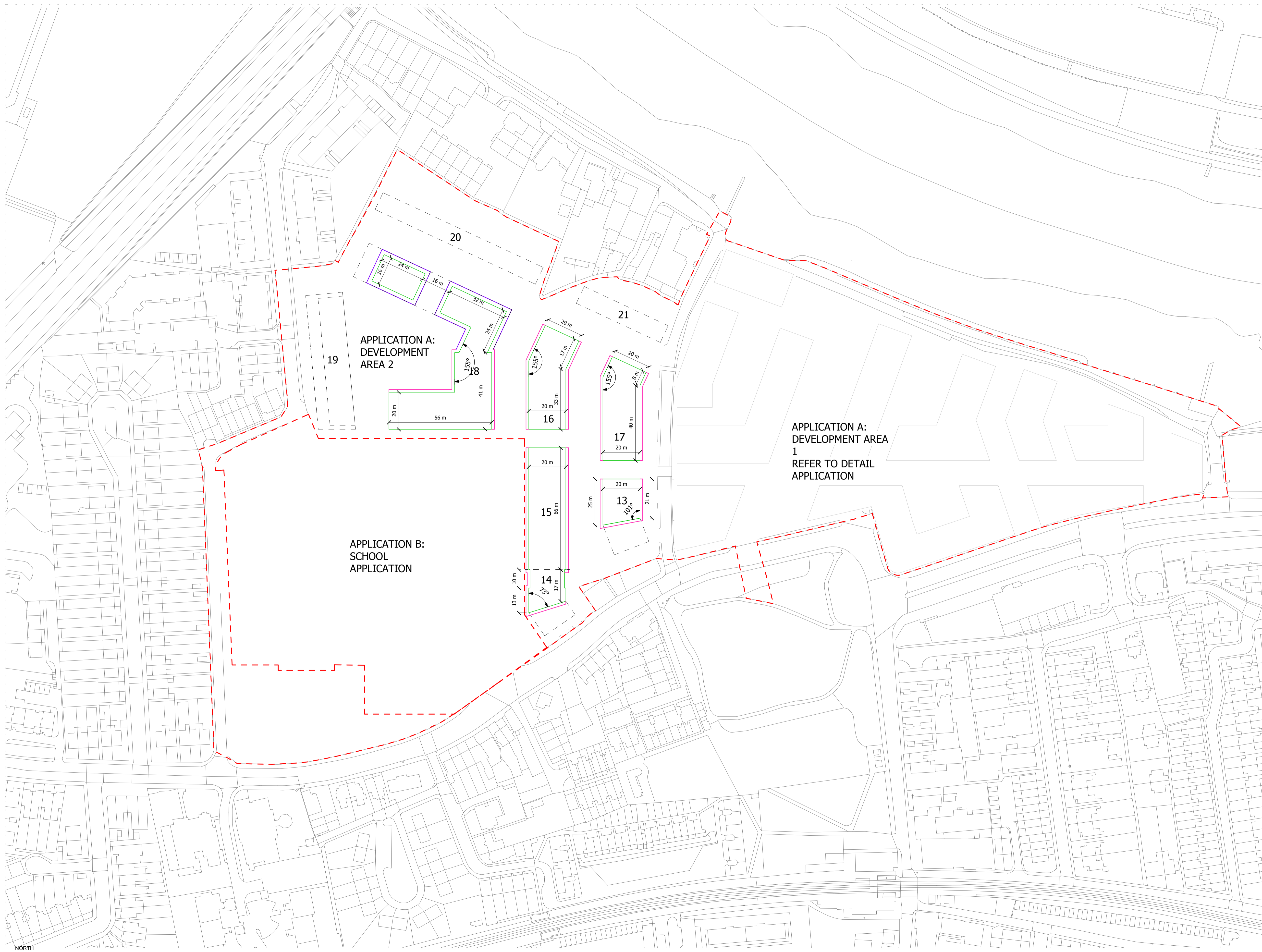
info@squireandpartners.com  
 www.squireandpartners.com

Project  
**Stag Brewery**  
**Richmond**

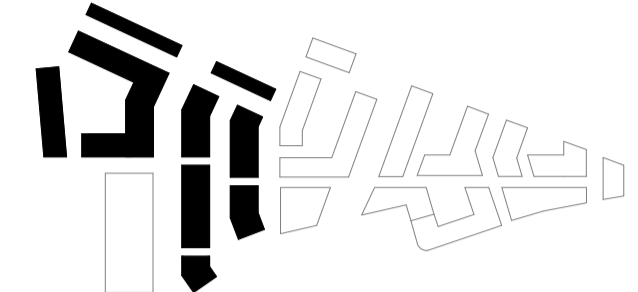
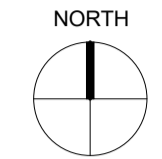
### Drawing BLOCK FOOTPRINT AND HORIZONTAL LINES OF DEVIATION FOUR STOREYS

Drawn	Date	Scale
KHO	13/09/19	1 : 1000 @ A1 1 : 2000 @ A3
Job Number	Drawing number	Revision
18125	C645_Z2_P_PR_002	E





NOTES:  
 DO NOT SCALE FROM THIS DRAWING. ALL DIMENSIONS TO BE CHECKED ON SITE. ALL OMISSIONS AND DISCREPANCIES TO BE REPORTED TO THE ARCHITECT IMMEDIATELY.  
 ALL RIGHTS RESERVED. THIS WORK IS COPYRIGHT AND CANNOT BE REPRODUCED OR COPIED OR MODIFIED IN ANY FORM OR BY ANY MEANS, GRAPHIC ELECTRONIC OR MECHANICAL, INCLUDING PHOTOCOPIING WITHOUT THE WRITTEN PERMISSION OF SQUIRE AND PARTNERS ARCHITECTS.



- HORIZONTAL LIMITS OF DEVIATION
- MINIMUM BLOCK FOOTPRINT
  - UP TO +1.5M FROM MINIMUM BLOCK FOOTPRINT
  - UP TO +2.2M FROM MINIMUM BLOCK FOOTPRINT
  - UP TO +3.0M FROM MINIMUM BLOCK FOOTPRINT
  - - - BLOCKS BELOW
  - 13-21** BLOCK NUMBER
  - - - PLANNING APPLICATION BOUNDARY

\* REFER TO PARAGRAPH 3.1.1 ON PAGE 15 OF THE DESIGN CODE FOR RELEVANT DESIGN CODE CRITERIA WHICH MUST/SHOULD BE ADHERED TO

LBRUT 2 APPLICATION	25/02/22	BJ	E
FINAL DRAFT HYBRID SUBMISSION	12/01/22	RKB	D
GLA SUBMISSION	27/04/20	BJ	C
DRAFT GLA SUBMISSION	24/01/20	KH	B
FINAL DRAFT PLANNING APPLICATION	21/10/19	KH	A
LEGAL REVIEW	13/09/19	KH	-

Revision description	Date	Check	Rev
----------------------	------	-------	-----

## SQUIRE & PARTNERS

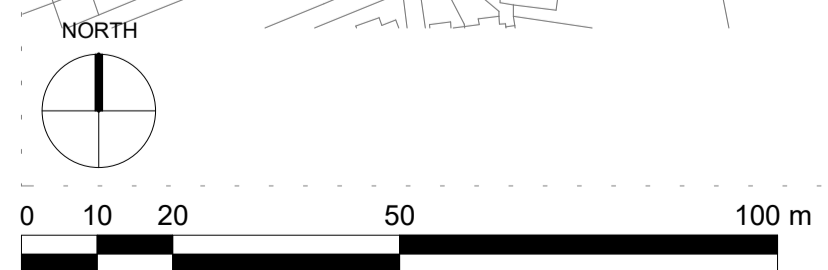
The Department Store  
 248 Ferndale Road London SW9 8FR  
 T: 020 7278 5555 F: 020 7239 0495

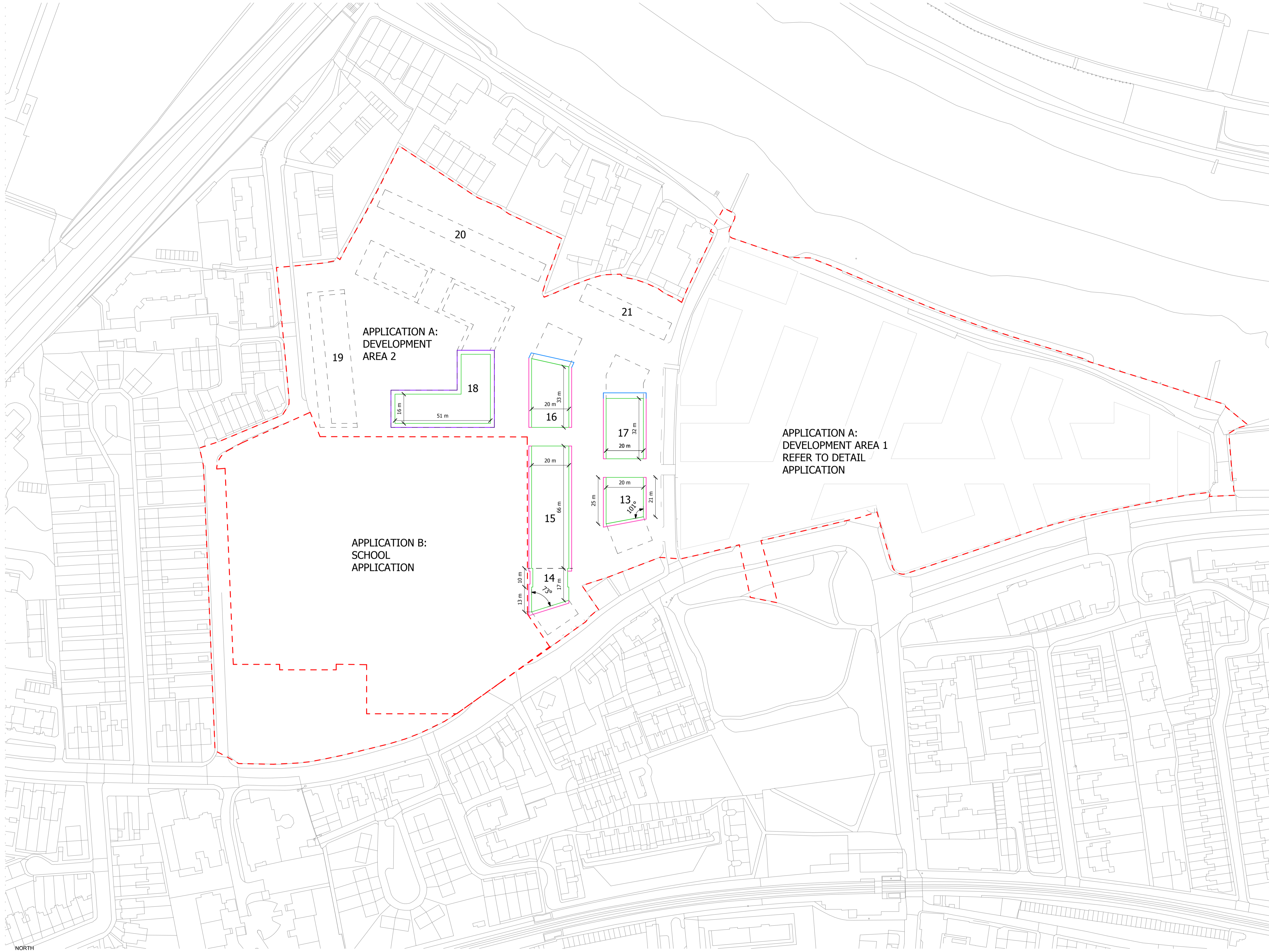
info@squireandpartners.com  
 www.squireandpartners.com

Project  
**Stag Brewery**  
 Richmond

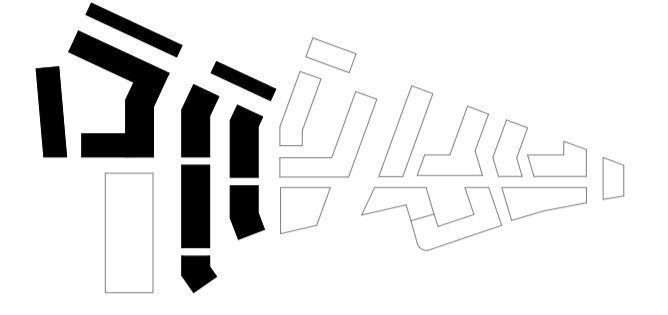
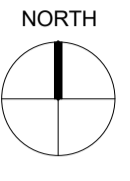
### BLOCK FOOTPRINT AND HORIZONTAL LINES OF DEVIATION FIVE STOREYS

Drawn	Date	Scale
KHO	13/09/19	1 : 1000 @ A1 1 : 2000 @ A3
Job Number	Drawing number	Revision
18125	C645_Z2_P_PR_003	E





NOTES:  
 DO NOT SCALE FROM THIS DRAWING. ALL DIMENSIONS TO BE CHECKED ON SITE. ALL OMISSIONS AND DISCREPANCIES TO BE REPORTED TO THE ARCHITECT IMMEDIATELY.  
 ALL RIGHTS RESERVED. THIS WORK IS COPYRIGHT AND CANNOT BE REPRODUCED OR COPIED OR MODIFIED IN ANY FORM OR BY ANY MEANS, GRAPHIC ELECTRONIC OR MECHANICAL, INCLUDING PHOTOCOPYING WITHOUT THE WRITTEN PERMISSION OF SQUIRE AND PARTNERS ARCHITECTS.



- HORIZONTAL LIMITS OF DEVIATION
- MINIMUM BLOCK FOOTPRINT
  - UP TO +1.5M FROM MINIMUM BLOCK FOOTPRINT
  - UP TO +2.2M FROM MINIMUM BLOCK FOOTPRINT
  - UP TO +3.0M FROM MINIMUM BLOCK FOOTPRINT
  - - - BLOCKS BELOW
  - 13-21** BLOCK NUMBER
  - - - PLANNING APPLICATION BOUNDARY

\* REFER TO PARAGRAPH 3.1.1 ON PAGE 15 OF THE DESIGN CODE FOR RELEVANT DESIGN CODE CRITERIA WHICH MUST/SHOULD BE ADHERED TO

LBRUT 2 APPLICATION	25/02/22	BJ	E
FINAL DRAFT HYBRID SUBMISSION	12/01/22	RKB	D
GLA SUBMISSION	27/04/20	BJ	C
DRAFT GLA SUBMISSION	24/01/20	KH	B
FINAL DRAFT PLANNING APPLICATION	21/10/19	KH	A
LEGAL REVIEW	13/09/19	KH	-

Revision description	Date	Check	Rev

## SQUIRE & PARTNERS

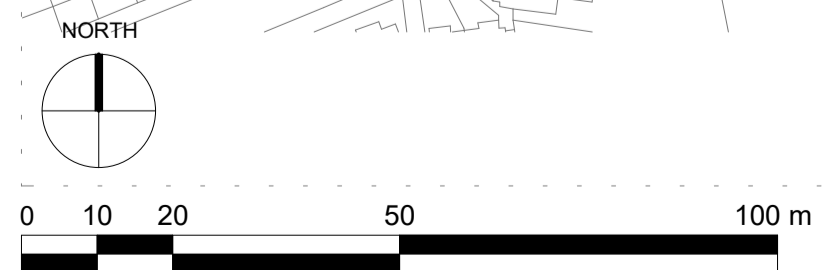
The Department Store  
 248 Ferndale Road London SW9 8FR  
 T: 020 7278 5555 F: 020 7239 0495

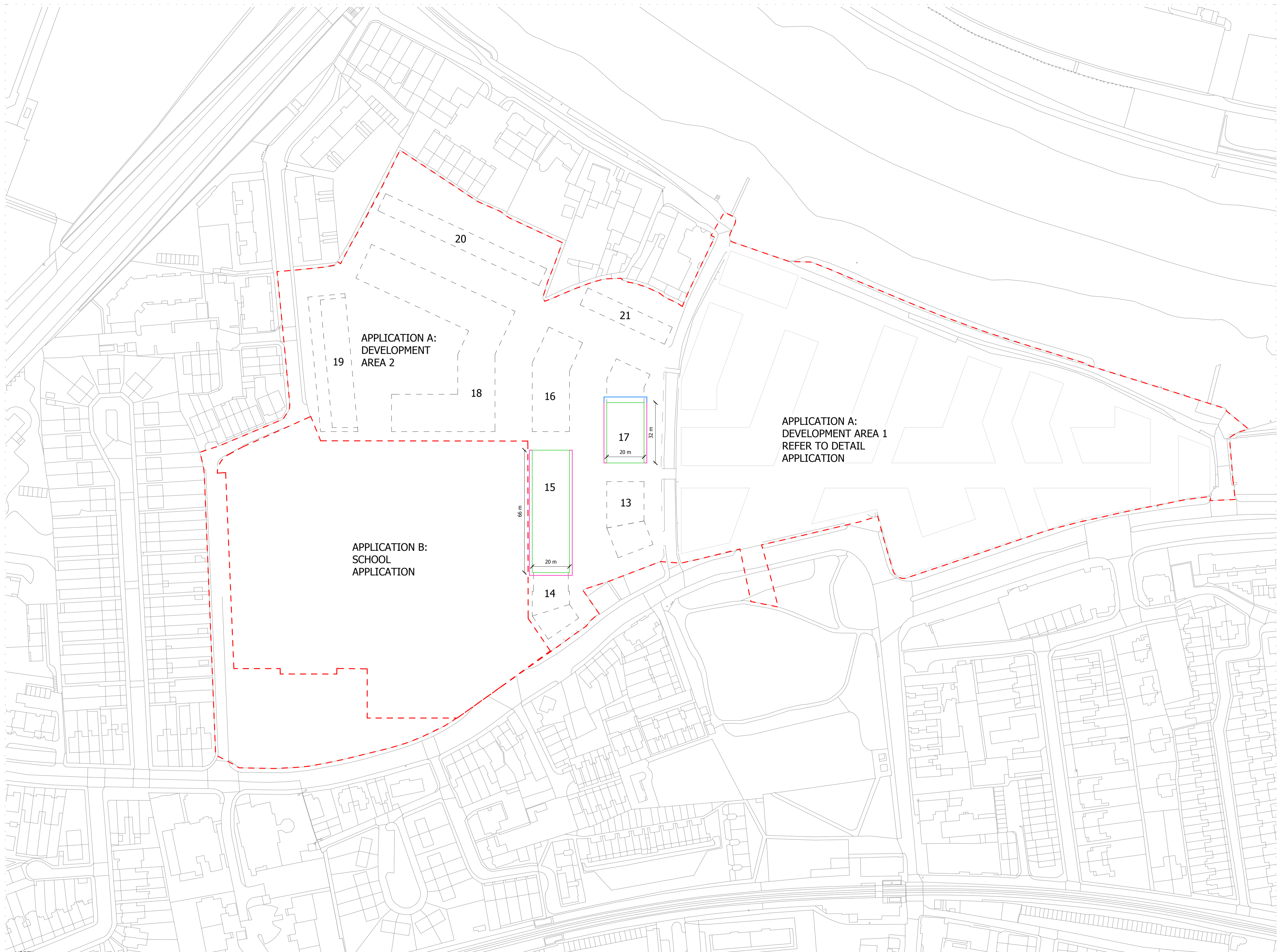
info@squireandpartners.com  
 www.squireandpartners.com

Project  
**Stag Brewery**  
 Richmond

### Drawing BLOCK FOOTPRINT AND HORIZONTAL LINES OF DEVIATION SIX STOREYS

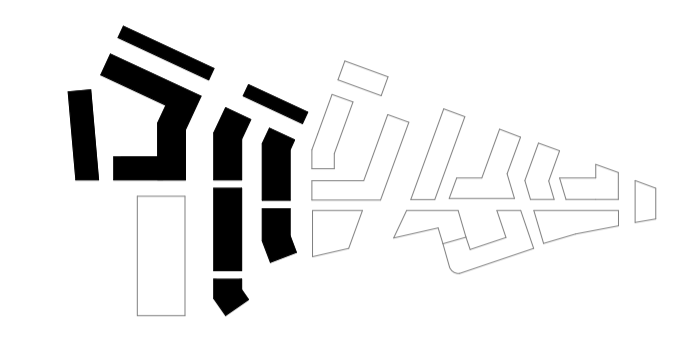
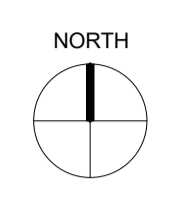
Drawn	Date	Scale
KHO	13/09/19	1 : 1000 @ A1 1 : 2000 @ A3
Job Number	Drawing number	Revision
18125	C645_Z2_P_PR_004	E





NOTES:  
DO NOT SCALE FROM THIS DRAWING. ALL DIMENSIONS TO BE CHECKED ON SITE. ALL OMISSIONS AND DISCREPANCIES TO BE REPORTED TO THE ARCHITECT IMMEDIATELY.

ALL RIGHTS RESERVED. THIS WORK IS COPYRIGHT AND CANNOT BE REPRODUCED OR COPIED OR MODIFIED IN ANY FORM OR BY ANY MEANS, GRAPHIC ELECTRONIC OR MECHANICAL, INCLUDING PHOTOCOPYING WITHOUT THE WRITTEN PERMISSION OF SQUIRE AND PARTNERS ARCHITECTS.



- HORIZONTAL LIMITS OF DEVIATION
- MINIMUM BLOCK FOOTPRINT
  - UP TO +1.5M FROM MINIMUM BLOCK FOOTPRINT
  - UP TO +2.2M FROM MINIMUM BLOCK FOOTPRINT
  - UP TO +3.0M FROM MINIMUM BLOCK FOOTPRINT
  - - - BLOCKS BELOW
  - 13-21** BLOCK NUMBER
  - - - PLANNING APPLICATION BOUNDARY

\* REFER TO PARAGRAPH 3.1.1 ON PAGE 15 OF THE DESIGN CODE FOR RELEVANT DESIGN CODE CRITERIA WHICH MUST/SHOULD BE ADHERED TO

LBRUT 2 APPLICATION	25/02/22	BJ	E
FINAL DRAFT HYBRID SUBMISSION	12/01/22	RKB	D
GLA SUBMISSION	27/04/20	BJ	C
DRAFT GLA SUBMISSION	24/01/20	KH	B
FINAL DRAFT PLANNING APPLICATION	21/10/19	KH	A
LEGAL REVIEW	13/09/19	KH	-

Revision description	Date	Check	Rev

## SQUIRE & PARTNERS

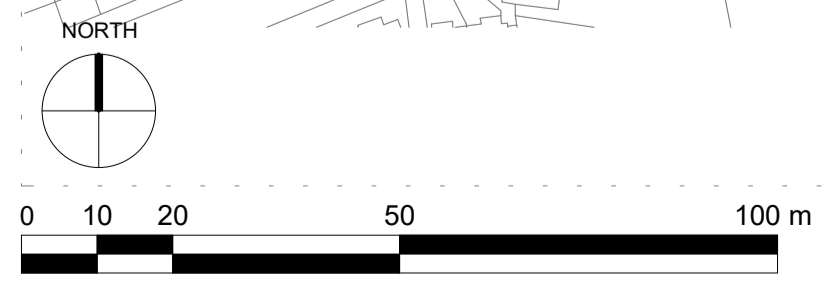
The Department Store  
248 Ferndale Road London SW9 8FR  
T: 020 7278 5555 F: 020 7239 0495

info@squireandpartners.com  
www.squireandpartners.com

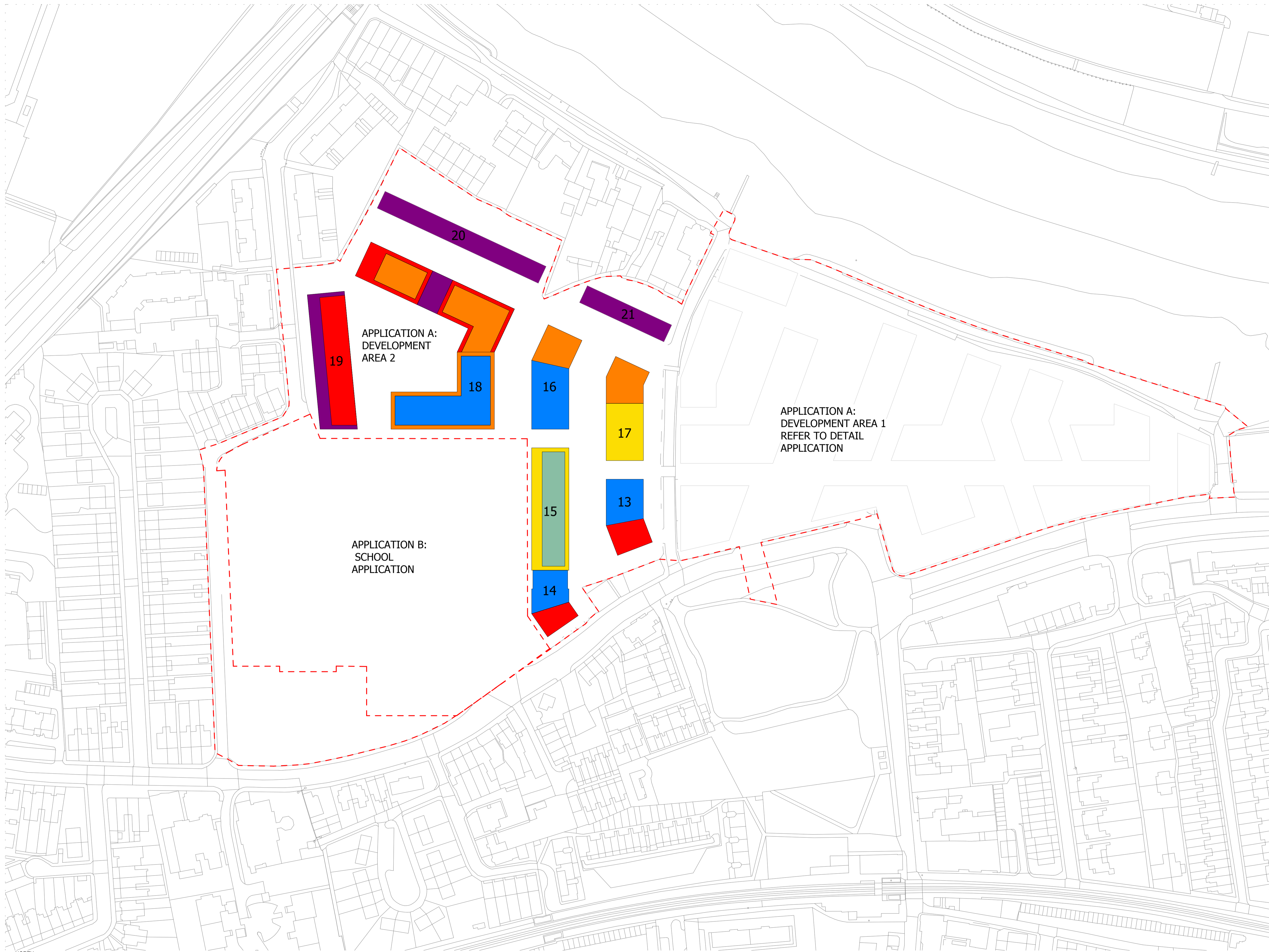
Project  
**Stag Brewery**  
Richmond

Drawing  
**BLOCK FOOTPRINT AND HORIZONTAL LINES OF DEVIATION SEVEN STOREYS**

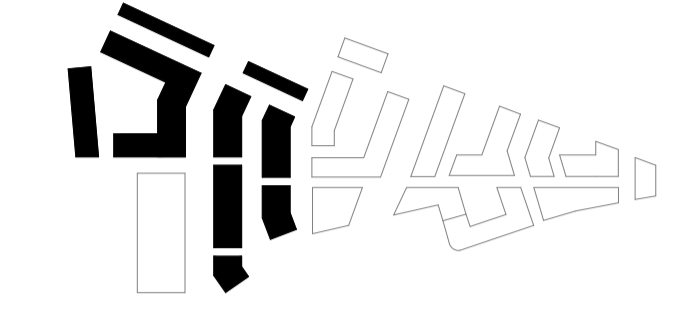
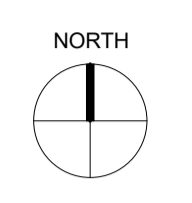
Drawn	Date	Scale
KHO	13/09/19	1 : 1000 @ A1 1 : 2000 @ A3
Job Number	Drawing number	Revision
18125	C645_Z2_P_PR_005	E







NOTES:  
 DO NOT SCALE FROM THIS DRAWING. ALL DIMENSIONS TO BE CHECKED ON SITE. ALL OMISSIONS AND DISCREPANCIES TO BE REPORTED TO THE ARCHITECT IMMEDIATELY.  
 ALL RIGHTS RESERVED. THIS WORK IS COPYRIGHT AND CANNOT BE REPRODUCED OR COPIED OR MODIFIED IN ANY FORM OR BY ANY MEANS, GRAPHIC ELECTRONIC OR MECHANICAL, INCLUDING PHOTOCOPYING WITHOUT THE WRITTEN PERMISSION OF SQUIRE AND PARTNERS ARCHITECTS.



VERTICAL LIMITS OF DEVIATION - ABOVE SITE DATUM

3 STOREYS	UP TO 13 m FROM BLOCK DATUM TO PARAPET UP TO 19m PARAPET A.O.D
4 STOREYS	UP TO 16 m FROM BLOCK DATUM TO PARAPET UP TO 23m PARAPET A.O.D
5 STOREYS	UP TO 19 m FROM BLOCK DATUM TO PARAPET UP TO 26m PARAPET A.O.D
6 STOREYS	UP TO 22 m FROM BLOCK DATUM TO PARAPET UP TO 29m PARAPET A.O.D
7 STOREYS	UP TO 26 m FROM BLOCK DATUM TO PARAPET UP TO 33m PARAPET A.O.D
8 STOREYS	UP TO 30 m FROM BLOCK DATUM TO PARAPET UP TO 37m PARAPET A.O.D

13-21 BLOCK NUMBER  
 - - - PLANNING APPLICATION BOUNDARY

NOTE:  
 THIS PLAN ITS TO BE READ IN CONJUNCTION WITH:  
 - BLOCK FOOTPRINT AND HORIZONTAL LINES OF DEVIATION: C645\_Z2\_P\_PR\_001, 002, 003, 004, 005 & 013  
 -DESIGN CODE

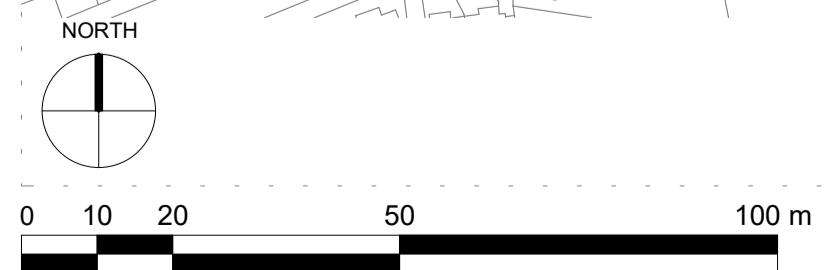
LBUR 2 APPLICATION	25/02/22	BJ	E
FINAL DRAFT HYBRID SUBMISSION	12/01/22	RKB	D
GLA SUBMISSION	27/04/20	BJ	C
DRAFT GLA SUBMISSION	24/01/20	KH	B
FINAL DRAFT PLANNING APPLICATION	21/10/19	KH	A
LEGAL REVIEW	13/09/19	KH	-

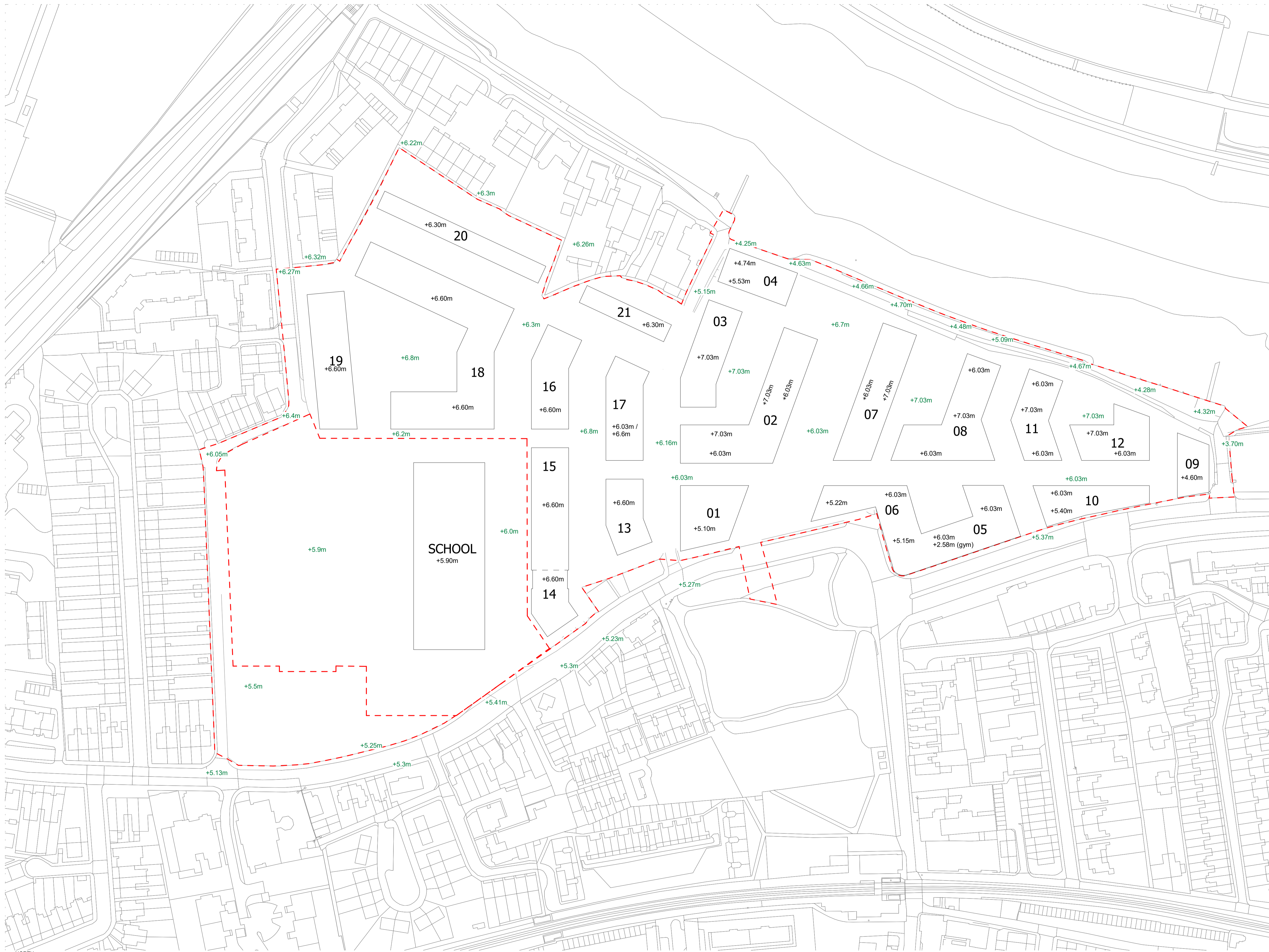
**SQUIRE & PARTNERS**  
 The Department Store  
 248 Ferndale Road London SW9 8FR  
 T: 020 7278 5555 F: 020 7239 0495

info@squireandpartners.com  
 www.squireandpartners.com  
 Project  
**Stag Brewery**  
 Richmond

Drawn  
**PROPOSED BLOCK HEIGHTS AND VERTICAL LINES OF DEVIATION**

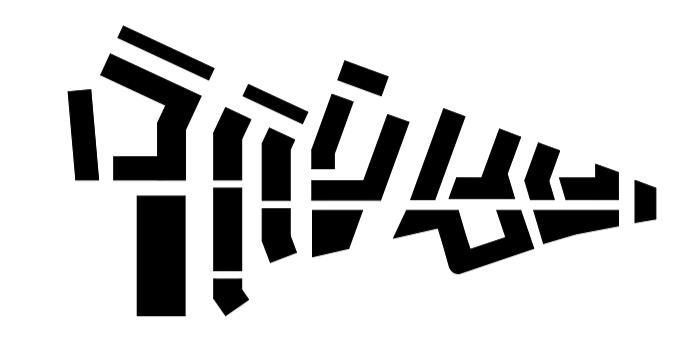
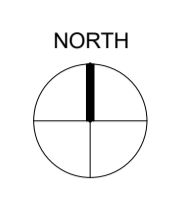
Drawn	Date	Scale
KHO	13/09/19	1 : 1000 @ A1 1 : 2000 @ A3
Job Number	Drawing number	Revision
18125	C645_Z2_P_PR_006	E





NOTES:  
DO NOT SCALE FROM THIS DRAWING. ALL DIMENSIONS TO BE CHECKED ON SITE. ALL OMISSIONS AND DISCREPANCIES TO BE REPORTED TO THE ARCHITECT IMMEDIATELY.

ALL RIGHTS RESERVED. THIS WORK IS COPYRIGHT AND CANNOT BE REPRODUCED OR COPIED IN ANY FORM OR BY ANY MEANS, GRAPHIC ELECTRONIC OR MECHANICAL, INCLUDING PHOTOCOPIING WITHOUT THE WRITTEN PERMISSION OF SQUIRE AND PARTNERS ARCHITECTS.



PROPOSED SITE LEVELS

□ BLOCK DATUM (GROUND LEVEL)

13-21 BLOCK NUMBER

- - - PLANNING APPLICATION BOUNDARY

LBURT 2 APPLICATION	25/02/22	RK	E
FINAL DRAFT HYBRID SUBMISSION	12/01/22	RKB	D
GLA SUBMISSION	27/04/20	B	C
DRAFT GLA SUBMISSION	24/01/20	KH	B
FINAL DRAFT PLANNING APPLICATION	21/10/19	KH	A
LEGAL REVIEW	13/09/19	KH	-

Revision description	Date	Check	Rev

## SQUIRE & PARTNERS

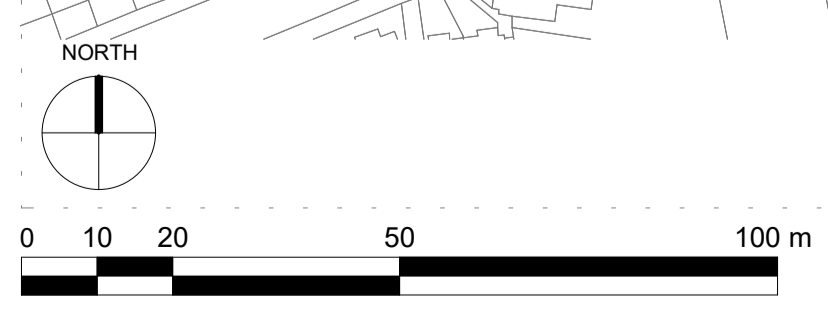
The Department Store  
248 Ferndale Road London SW9 8FR  
T: 020 7278 5555 F: 020 7239 0495

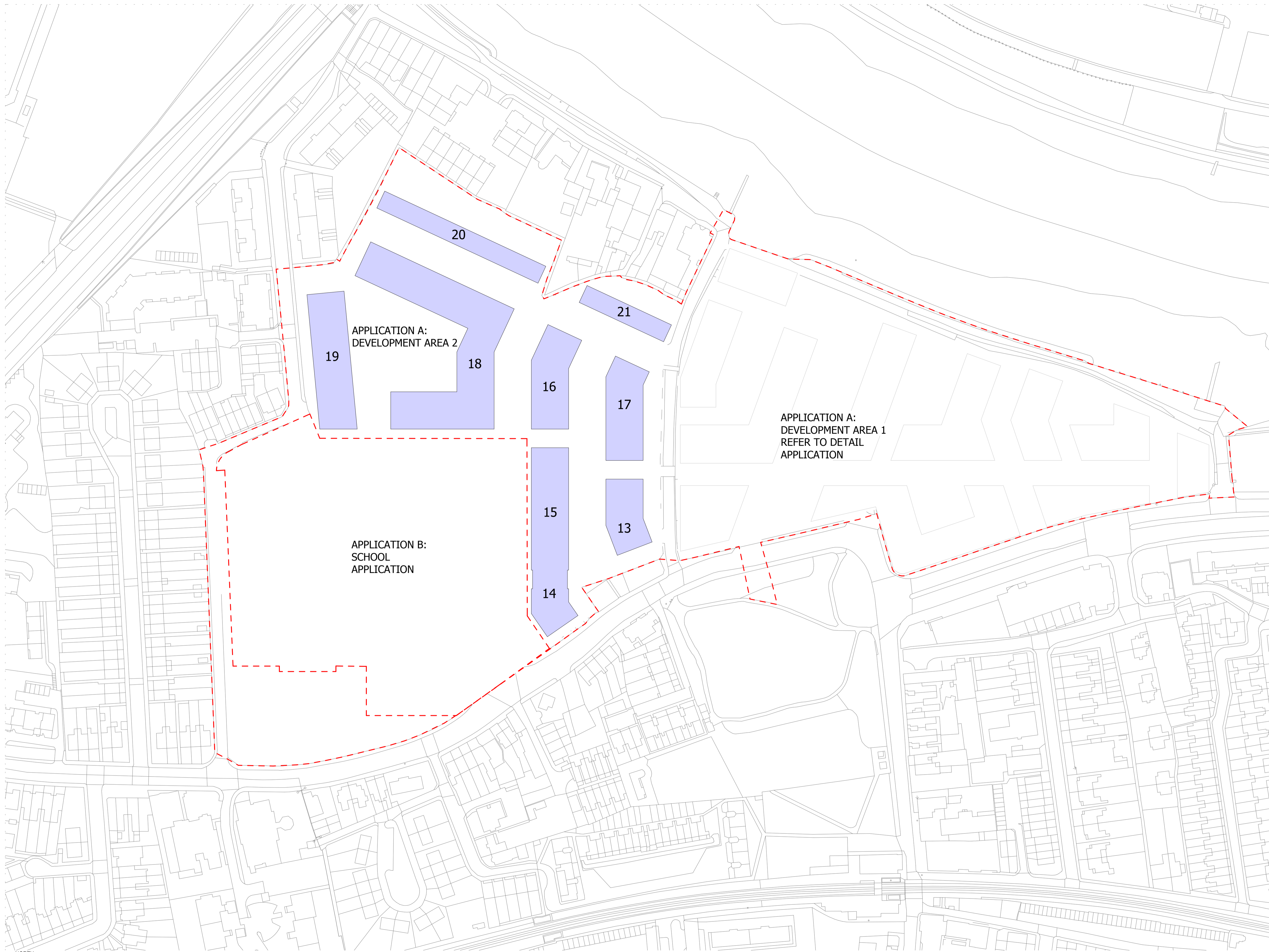
info@squireandpartners.com  
www.squireandpartners.com

Project  
**Stag Brewery**  
Richmond

Drawing  
**PROPOSED BUILDING LEVELS - GROUND FLOOR**

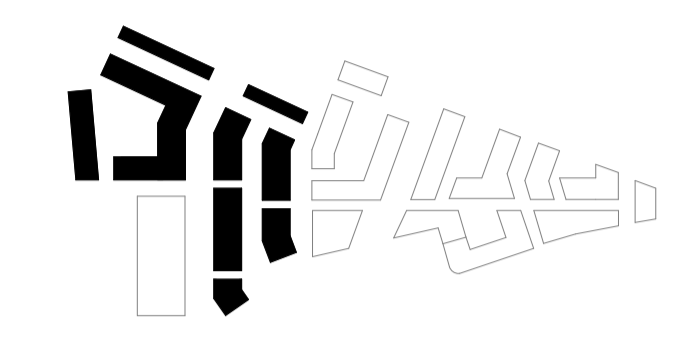
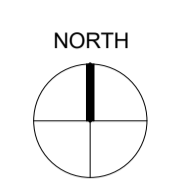
Drawn	Date	Scale
KHO	13/09/19	1 : 1000 @ A1 1 : 2000 @ A3
Job Number	Drawing number	Revision
18125	C645_Z2_P_PR_007	E





NOTES:  
DO NOT SCALE FROM THIS DRAWING. ALL DIMENSIONS TO BE CHECKED ON SITE. ALL OMISSIONS AND DISCREPANCIES TO BE REPORTED TO THE ARCHITECT IMMEDIATELY.

ALL RIGHTS RESERVED. THIS WORK IS COPYRIGHT AND CANNOT BE REPRODUCED OR COPIED OR MODIFIED IN ANY FORM OR BY ANY MEANS, GRAPHIC ELECTRONIC OR MECHANICAL, INCLUDING PHOTOCOPIING WITHOUT THE WRITTEN PERMISSION OF SQUIRE AND PARTNERS ARCHITECTS.



- LAND USE DISTRIBUTION
- RESIDENTIAL
  - 13-21 BLOCK NUMBER
  - PLANNING APPLICATION BOUNDARY

APPLICATION A:  
DEVELOPMENT AREA 1  
REFER TO DETAIL  
APPLICATION

APPLICATION A:  
DEVELOPMENT AREA 2

APPLICATION B:  
SCHOOL  
APPLICATION

LBURT 2 APPLICATION	25/02/22	BJ	E
FINAL DRAFT HYBRID SUBMISSION	12/01/22	RKB	D
GLA SUBMISSION	27/04/20	BJ	C
DRAFT GLA SUBMISSION	24/01/20	KH	B
FINAL DRAFT PLANNING APPLICATION	21/10/19	KH	A
LEGAL REVIEW	13/09/19	KH	-

Revision description	Date	Check	Rev

## SQUIRE & PARTNERS

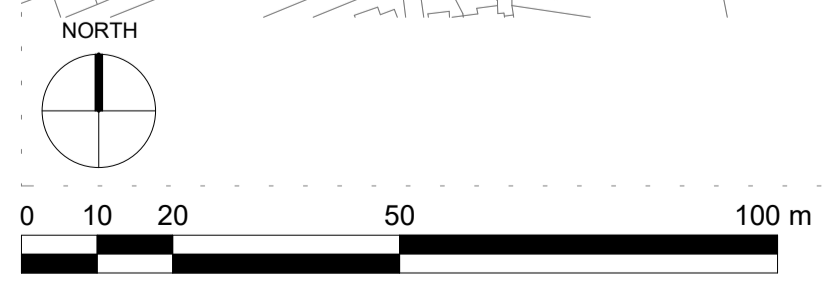
The Department Store  
248 Ferndale Road London SW9 8FR  
T: 020 7278 5555 F: 020 7239 0495

info@squireandpartners.com  
www.squireandpartners.com

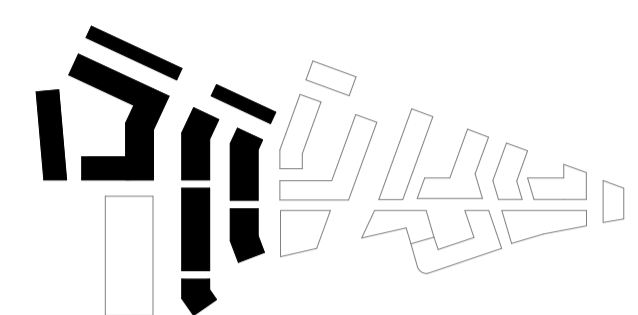
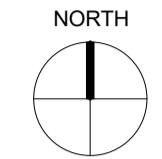
Project  
**Stag Brewery**  
Richmond


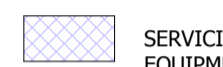


Drawing  
**PROPOSED LAND USE  
DISTRIBUTION -  
GROUND AND UPPER FLOORS**

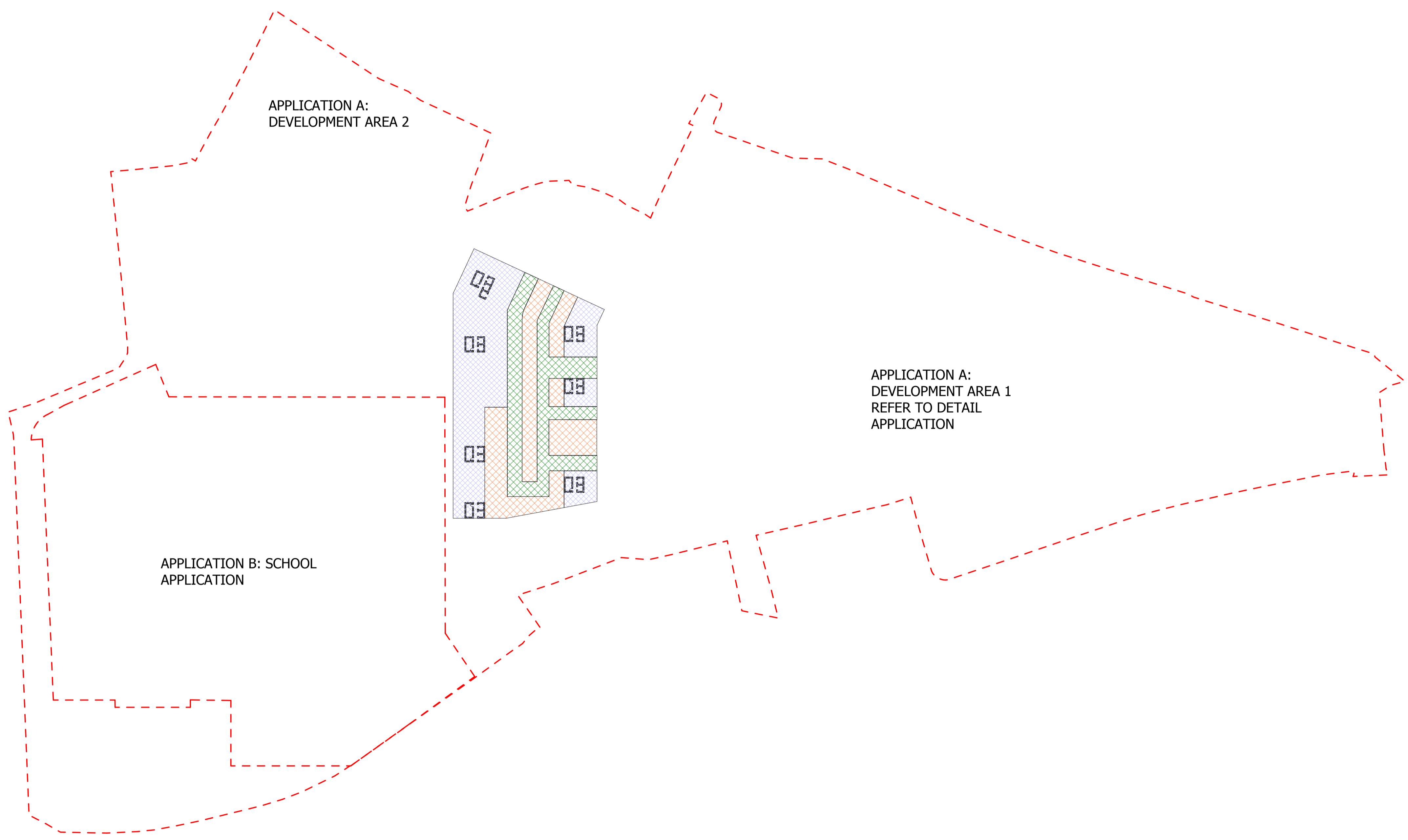
Drawn	Date	Scale
KHO	13/09/19	1 : 1000 @ A1 1 : 2000 @ A3
Job Number	Drawing number	Revision
18125	C645_Z2_P_PR_008	E



NOTES:  
 DO NOT SCALE FROM THIS DRAWING. ALL DIMENSIONS TO BE CHECKED ON SITE. ALL OMISSIONS AND DISCREPANCIES TO BE REPORTED TO THE ARCHITECT IMMEDIATELY.  
 ALL RIGHTS RESERVED. THIS WORK IS COPYRIGHT AND CANNOT BE REPRODUCED OR COPIED OR MODIFIED IN ANY FORM OR BY ANY MEANS, GRAPHIC ELECTRONIC OR MECHANICAL, INCLUDING PHOTOCOPYING WITHOUT THE WRITTEN PERMISSION OF SQUIRE AND PARTNERS ARCHITECTS.



- LAND USE DISTRIBUTION
-  PARKING
  -  SERVICING AND UTILITY & PLANT EQUIPMENT
  -  ACCESS
  -  PLANNING APPLICATION BOUNDARY



LBRUT 2 APPLICATION	25/02/22	BJ	F
FINAL DRAFT HYBRID SUBMISSION	12/01/22	RKB	E
LEGAL REVIEW COMMENTS	21/05/20	BJ	D
GLA SUBMISSION	27/04/20	BJ	C
DRAFT GLA SUBMISSION	24/01/20	KH	B
FINAL DRAFT PLANNING APPLICATION	21/10/19	KH	A
LEGAL REVIEW	13/09/19	KH	-

Revision description	Date	Check	Rev
----------------------	------	-------	-----

## SQUIRE & PARTNERS

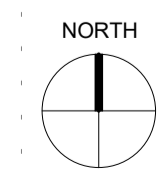
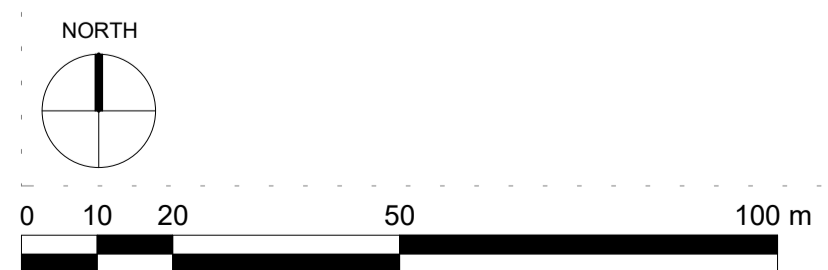
The Department Store  
 248 Ferndale Road London SW9 8FR  
 T: 020 7278 5555 F: 020 7239 0495

info@squireandpartners.com  
 www.squireandpartners.com

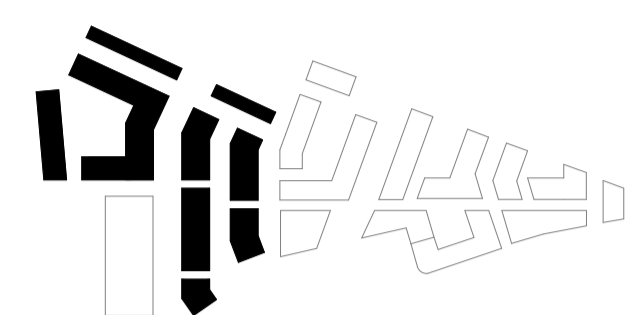
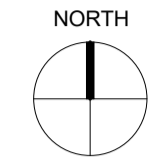
Project  
**Stag Brewery**  
 Richmond

Drawing  
**PROPOSED LAND USE DISTRIBUTION - BASEMENT**

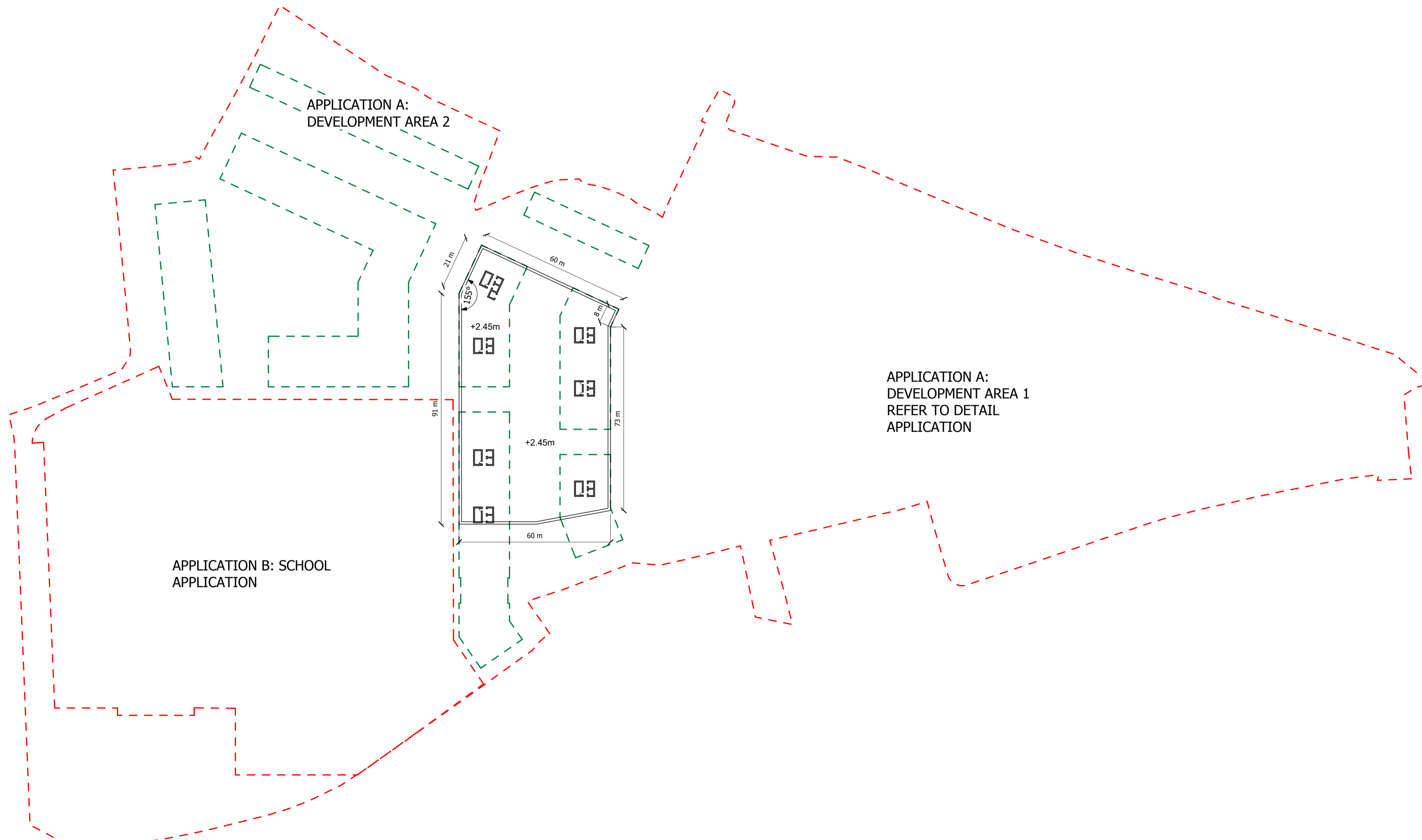
Drawn	Date	Scale
KHO	13/09/19	1 : 1000 @ A1 1 : 2000 @ A3
Job Number	Drawing number	Revision
18125	C645_Z2_P_PR_009	F



NOTES:  
 DO NOT SCALE FROM THIS DRAWING. ALL DIMENSIONS TO BE CHECKED ON SITE. ALL OMISSIONS AND DISCREPANCIES TO BE REPORTED TO THE ARCHITECT IMMEDIATELY.  
 ALL RIGHTS RESERVED. THIS WORK IS COPYRIGHT AND CANNOT BE REPRODUCED OR COPIED OR MODIFIED IN ANY FORM OR BY ANY MEANS, GRAPHIC ELECTRONIC OR MECHANICAL, INCLUDING PHOTOCOPIING WITHOUT THE WRITTEN PERMISSION OF SQUIRE AND PARTNERS ARCHITECTS.



--- BLOCK ABOVE FOOTPRINT  
 - - - PLANNING APPLICATION BOUNDARY  
 +2.45m MAXIMUM BASEMENT DEPTH



LBRUT 2 APPLICATION	25/02/22	BJ	E
FINAL DRAFT HYBRID SUBMISSION	12/01/22	RKB	D
GLA SUBMISSION	27/04/20	BJ	C
DRAFT GLA SUBMISSION	24/01/20	KH	B
FINAL DRAFT PLANNING APPLICATION	21/10/19	KH	A
LEGAL REVIEW	13/09/19	KH	-

Revision description	Date	Check	Rev
----------------------	------	-------	-----

## SQUIRE & PARTNERS

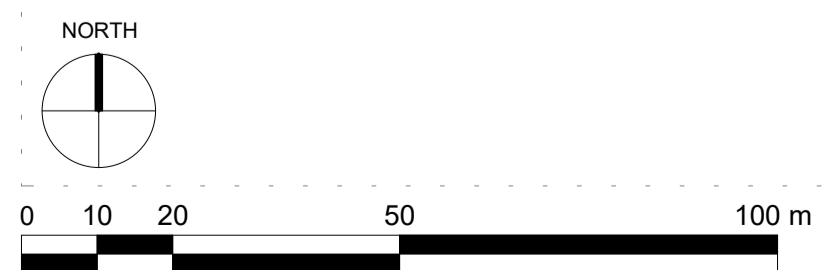
The Department Store  
 248 Ferndale Road London SW9 8FR  
 T: 020 7278 5555 F: 020 7239 0495

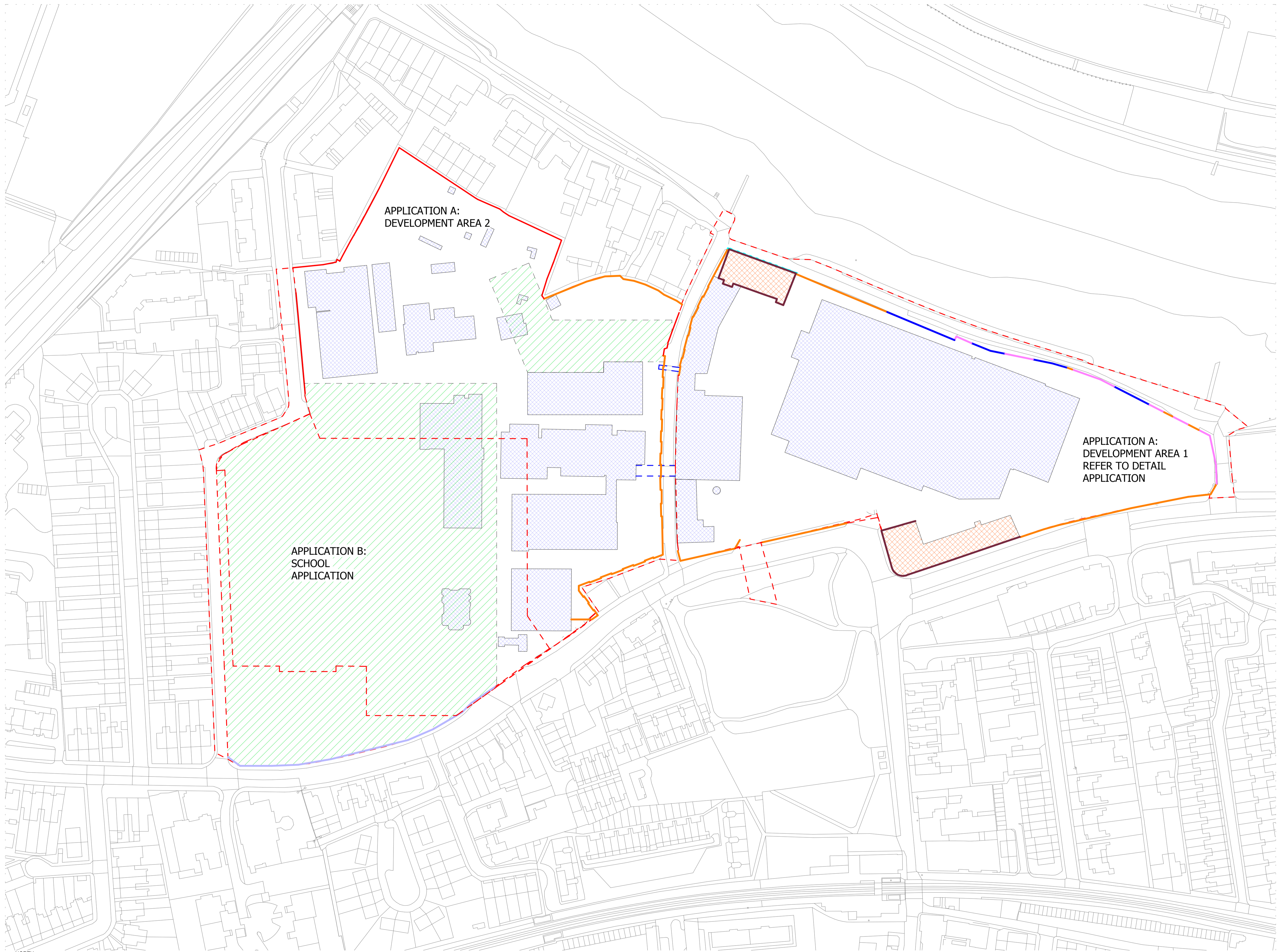
info@squireandpartners.com  
 www.squireandpartners.com

Project  
**Stag Brewery**  
 Richmond

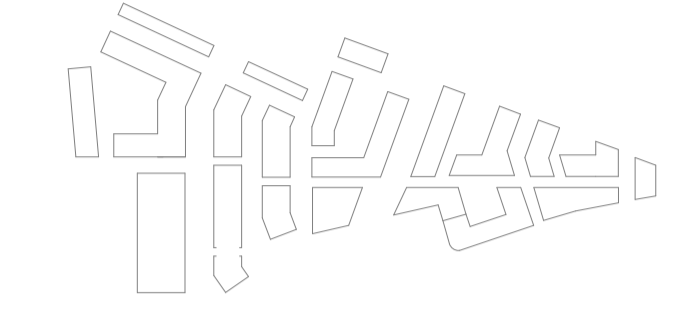
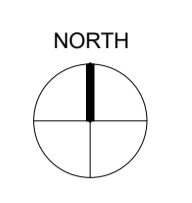
### PROPOSED BASEMENT MAXIMUM DEPTH AND EXTENT

Drawn	Date	Scale
KHO	13/09/19	1 : 1000 @ A1 1 : 2000 @ A3
Job Number	Drawing number	Revision
18125	C645_Z2_P_PR_010	E





NOTES:  
 DO NOT SCALE FROM THIS DRAWING. ALL DIMENSIONS TO BE CHECKED ON SITE. ALL OMISSIONS AND DISCREPANCIES TO BE REPORTED TO THE ARCHITECT IMMEDIATELY.  
 ALL RIGHTS RESERVED. THIS WORK IS COPYRIGHT AND CANNOT BE REPRODUCED OR COPIED OR MODIFIED IN ANY FORM OR BY ANY MEANS, GRAPHIC ELECTRONIC OR MECHANICAL, INCLUDING PHOTOCOPYING WITHOUT THE WRITTEN PERMISSION OF SQUIRE AND PARTNERS ARCHITECTS.



- TO BE DEMOLISHED
- PARTIAL FACADE RETENTION
- BRIDGE TO BE REMOVED
- PLANNING APPLICATION BOUNDARY
- EXISTING BUILDING TO BE RETAINED AS FLOOD DEFENCE WALL AND MODIFIED AS REQUIRED
- EXISTING WALL TO BE DEMOLISHED TO LEVEL +6.03m AND NEW GLASS BALLUSTRADE ON RIVERWALL
- EXISTING WALL TO BE DEMOLISHED TO FINISH LEVEL +6.70m
- EXISTING WALL TO BE REMOVED
- EXISTING FENCE TO BE RETAINED
- MEMORIALS ON EXISTING WALL TO BE RELOCATED ON SITE
- ALL OTHER EXISTING WALL AND FENCES TO BE REMOVED
- FACADE TO BE RETAINED

LBURT 2 APPLICATION	25/02/22	BJ	E
FINAL DRAFT HYBRID SUBMISSION	12/01/22	RKB	D
GLA SUBMISSION	27/04/20	BJ	C
DRAFT GLA SUBMISSION	24/01/20	KH	B
FINAL DRAFT PLANNING APPLICATION	21/10/19	KH	A
LEGAL REVIEW	13/09/19	KH	-

Revision description	Date	Check	Rev

## SQUIRE & PARTNERS

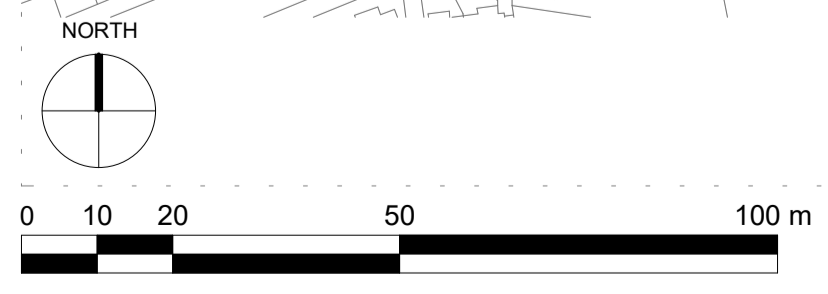
The Department Store  
 248 Ferndale Road London SW9 8FR  
 T: 020 7278 5555 F: 020 7239 0495

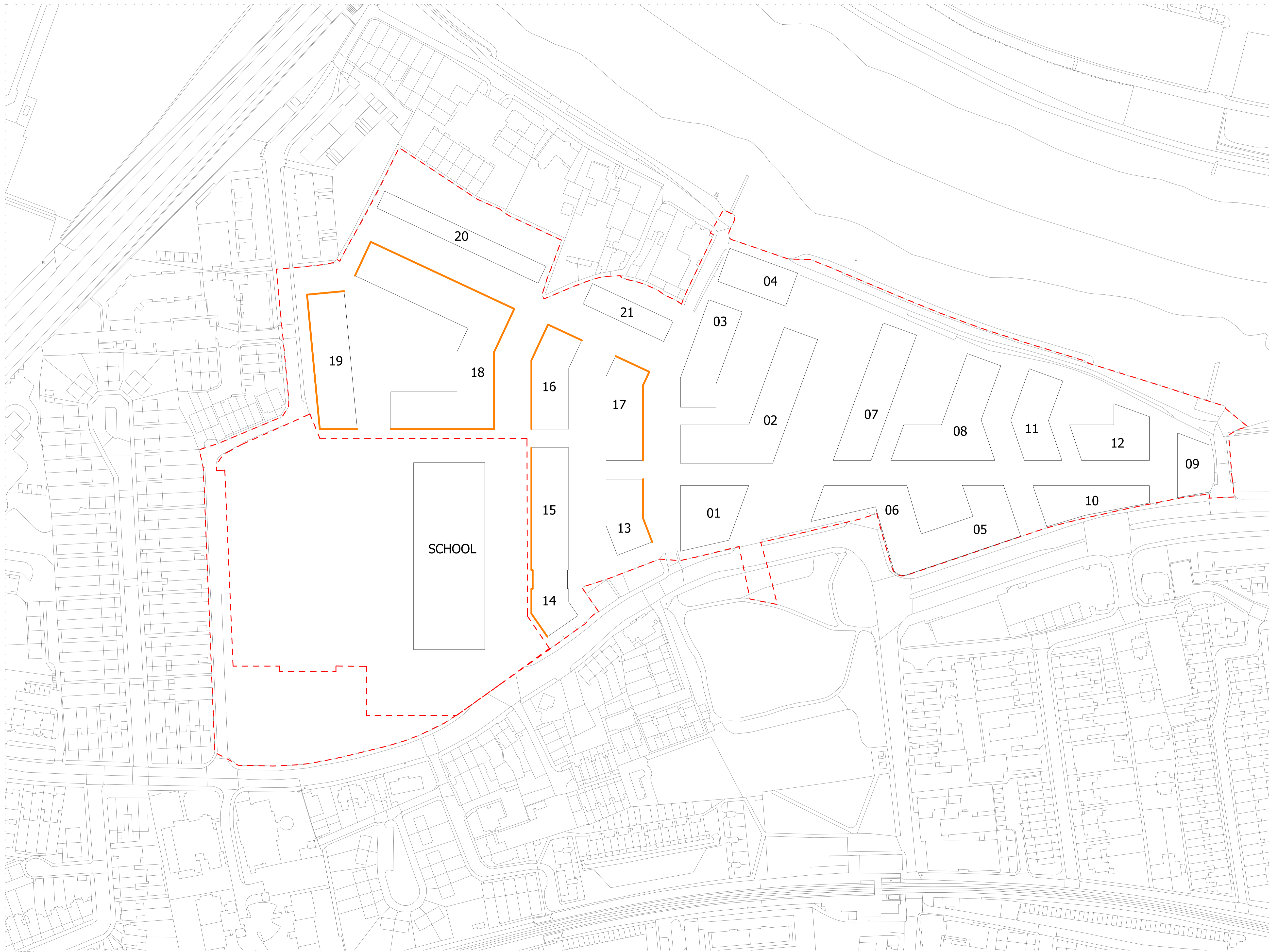
info@squireandpartners.com  
 www.squireandpartners.com

Project  
**Stag Brewery**  
 Richmond

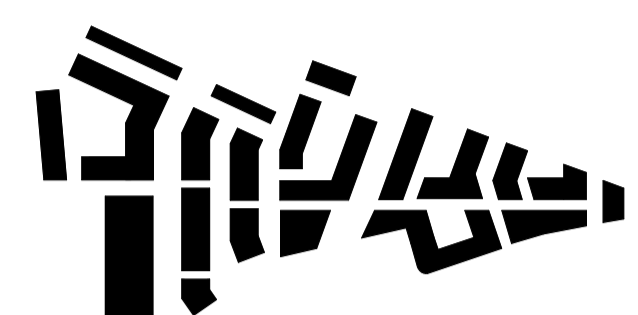
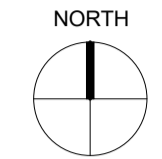
### DEMOLITION AND RETENTION PLAN

Drawn	Date	Scale
KHO	13/09/19	1 : 1000 @ A1 1 : 2000 @ A3
Job Number	Drawing number	Revision
18125	C645_Z2_P_PR_011	E





NOTES:  
 DO NOT SCALE FROM THIS DRAWING. ALL DIMENSIONS TO BE CHECKED ON SITE. ALL OMISSIONS AND DISCREPANCIES TO BE REPORTED TO THE ARCHITECT IMMEDIATELY.  
 ALL RIGHTS RESERVED. THIS WORK IS COPYRIGHT AND CANNOT BE REPRODUCED OR COPIED OR MODIFIED IN ANY FORM OR BY ANY MEANS, GRAPHIC ELECTRONIC OR MECHANICAL, INCLUDING PHOTOCOPIING WITHOUT THE WRITTEN PERMISSION OF SQUIRE AND PARTNERS ARCHITECTS.



PROPOSED SITE LEVELS  
 □ BLOCK DATUM (GROUND LEVEL)  
 13-21 BLOCK NUMBER  
 - - - PLANNING APPLICATION BOUNDARY  
 — PROPOSED ACTIVE FRONTAGES

LBURUT 2 APPLICATION	25/02/22	RJB	E
FINAL DRAFT HYBRID SUBMISSION	12/01/22	RKB	D
GLA SUBMISSION	27/04/20	BJ	C
DRAFT GLA SUBMISSION	24/01/20	KH	B
FINAL DRAFT PLANNING APPLICATION	21/10/19	KH	A
LEGAL REVIEW	13/09/19	KH	-

Revision description	Date	Check	Rev
----------------------	------	-------	-----

## SQUIRE & PARTNERS

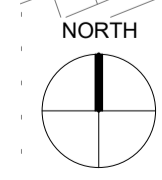
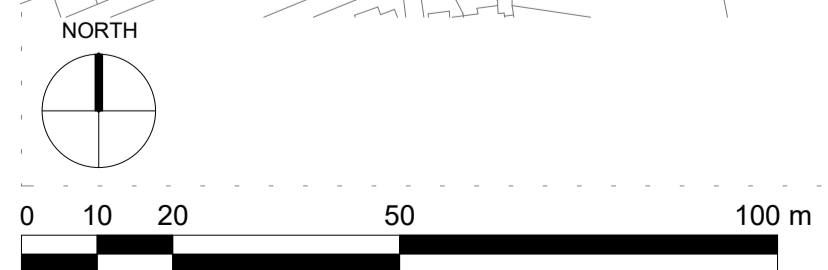
The Department Store  
 248 Ferndale Road London SW9 8FR  
 T: 020 7278 5555 F: 020 7239 0495

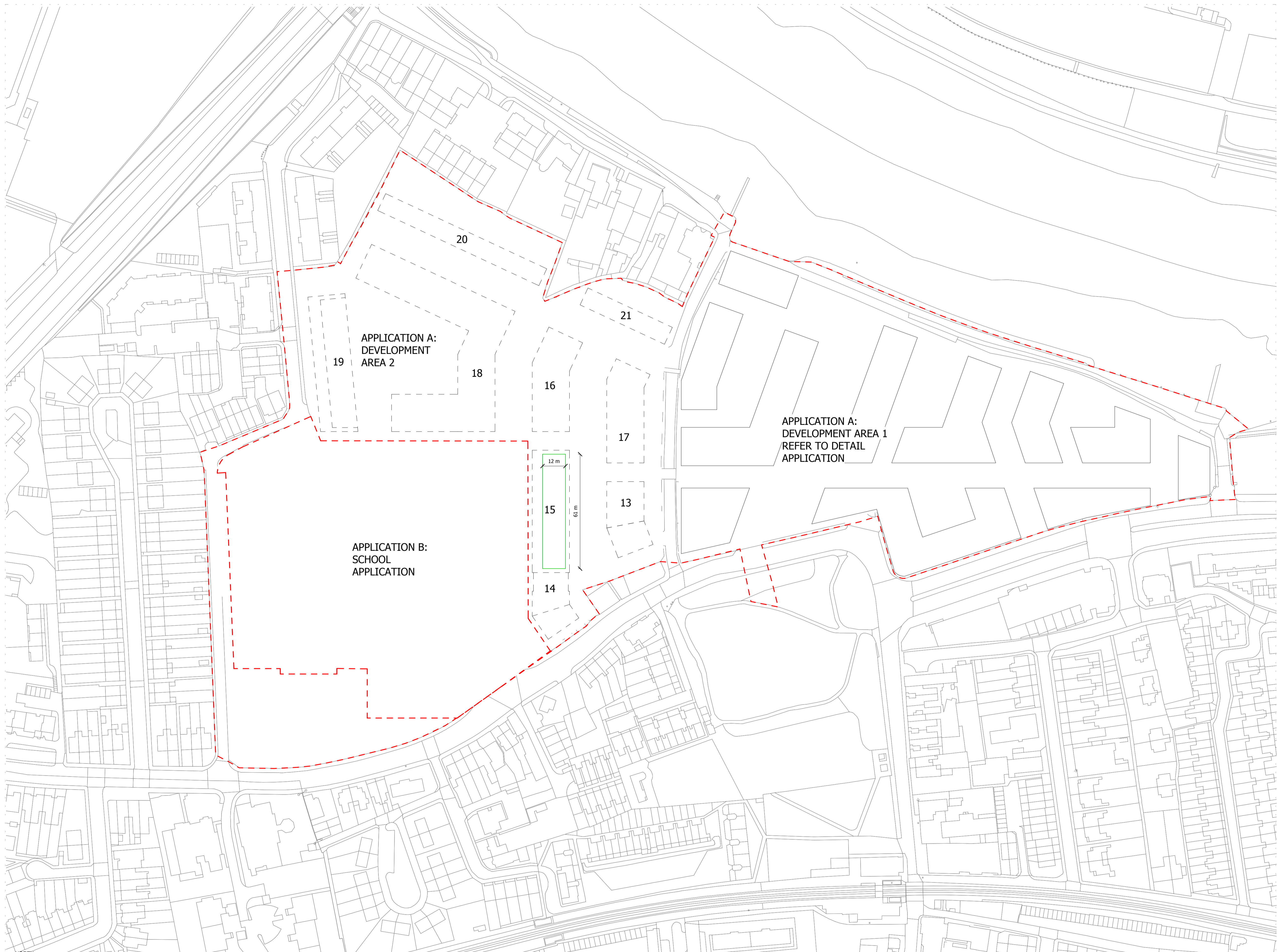
info@squireandpartners.com  
 www.squireandpartners.com

Project  
**Stag Brewery**  
 Richmond

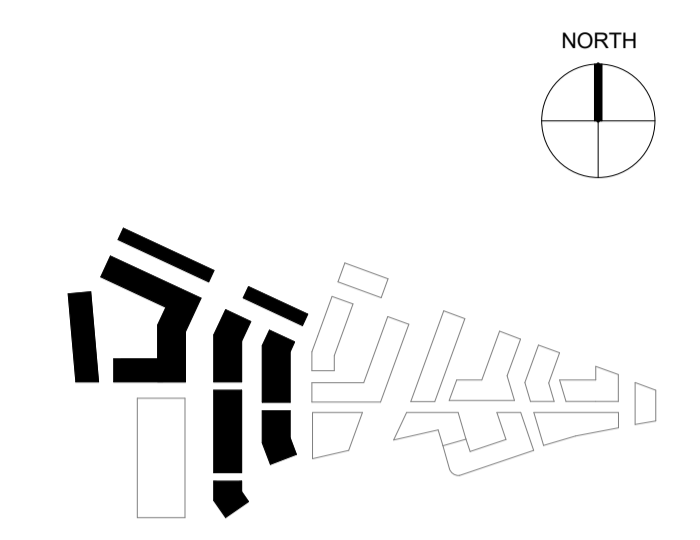
### PROPOSED ACTIVE FRONTAGES - GROUND FLOOR

Drawn	Date	Scale
KHO	13/09/19	1 : 1000 @ A1 1 : 2000 @ A3
Job Number	Drawing number	Revision
18125	C645_Z2_P_PR_012	E





NOTES:  
 DO NOT SCALE FROM THIS DRAWING. ALL DIMENSIONS TO BE CHECKED ON SITE. ALL OMISSIONS AND DISCREPANCIES TO BE REPORTED TO THE ARCHITECT IMMEDIATELY.  
 ALL RIGHTS RESERVED. THIS WORK IS COPYRIGHT AND CANNOT BE REPRODUCED OR COPIED OR MODIFIED IN ANY FORM OR BY ANY MEANS, GRAPHIC ELECTRONIC OR MECHANICAL, INCLUDING PHOTOCOPYING WITHOUT THE WRITTEN PERMISSION OF SQUIRE AND PARTNERS ARCHITECTS.



- HORIZONTAL LIMITS OF DEVIATION
- MINIMUM BLOCK FOOTPRINT
  - UP TO +1.5M FROM MINIMUM BLOCK FOOTPRINT
  - UP TO +2.2M FROM MINIMUM BLOCK FOOTPRINT
  - UP TO +3.0M FROM MINIMUM BLOCK FOOTPRINT
  - - - BLOCKS BELOW
  - 13-21** BLOCK NUMBER
  - - - PLANNING APPLICATION BOUNDARY

\* REFER TO PARAGRAPH 3.1.1 ON PAGE 15 OF THE DESIGN CODE FOR RELEVANT DESIGN CODE CRITERIA WHICH MUST/SHOULD BE ADHERED TO

LBUR2 APPLICATION	25/02/22	BJ	E
FINAL DRAFT HYBRID SUBMISSION	12/01/22	RKB	D
GLA SUBMISSION	27/04/20	BJ	C
DRAFT GLA SUBMISSION	24/01/20	KH	B
FINAL DRAFT PLANNING APPLICATION	21/10/19	KH	A
LEGAL REVIEW	13/09/19	KH	-

Revision description	Date	Check	Rev
----------------------	------	-------	-----

## SQUIRE & PARTNERS

The Department Store  
 248 Ferndale Road London SW9 8FR  
 T: 020 7278 5555 F: 020 7239 0495

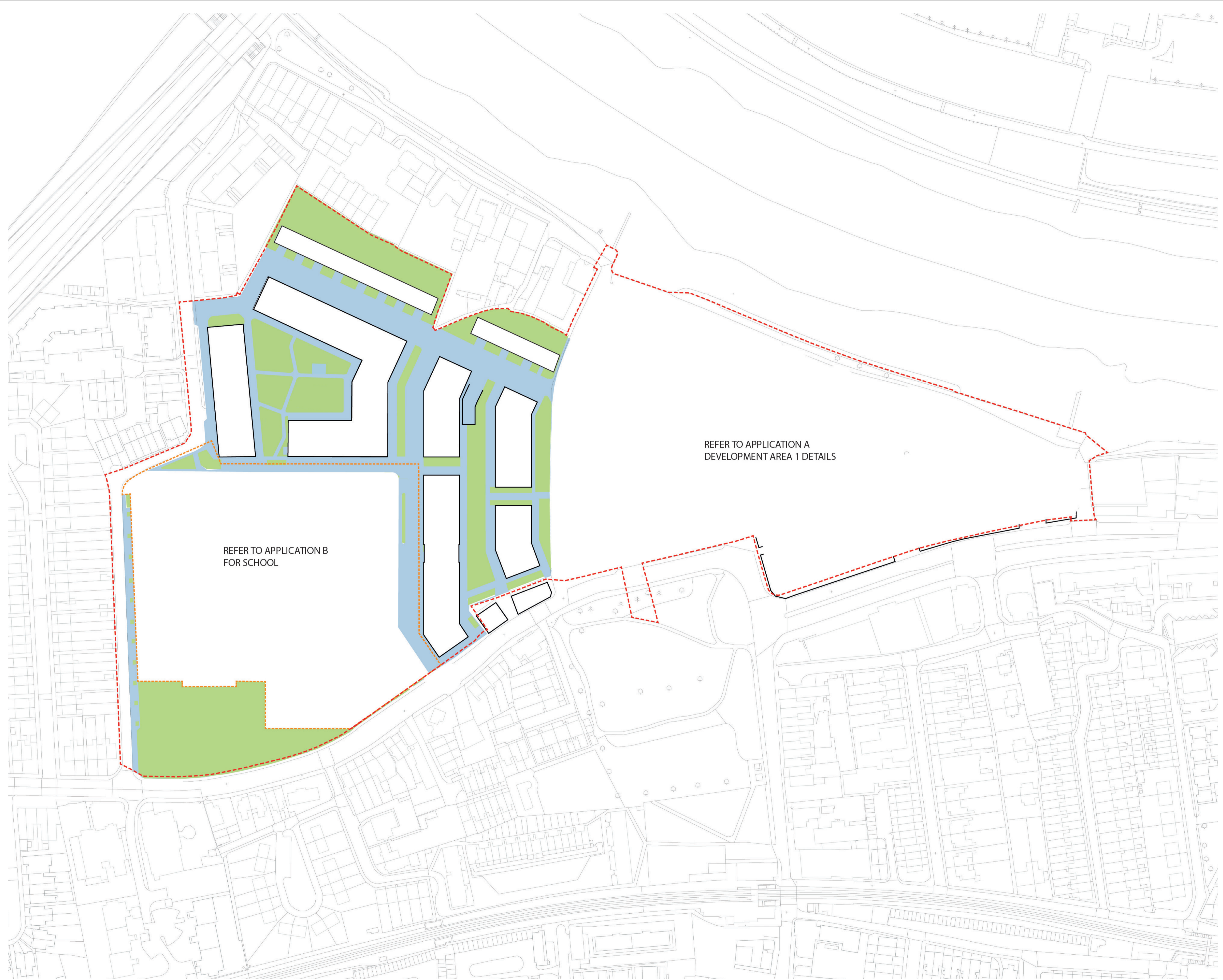
info@squireandpartners.com  
 www.squireandpartners.com

Project  
**Stag Brewery**  
 Richmond

### BLOCK FOOTPRINT AND HORIZONTAL LINES OF DEVIATION EIGHT STOREYS

Drawn	Date	Scale
KHO	13/09/19	1 : 1000 @ A1 1 : 2000 @ A3
Job Number	Drawing number	Revision
18125	C645_Z2_P_PR_013	E





rev	details	by	date
P00	Issue for Planning Submission	AS	11.03.2022

**Notes**

1.0 Do not scale from drawing, use figured dimensions only  
 1.1 All dimensions to be checked onsite  
 1.2 This drawing to be read in conjunction with all other Gillespies drawings and specifications

- LEGEND**
- Hard Landscape
  - Soft Landscape
  - Site Application Boundary
  - School Application Boundary

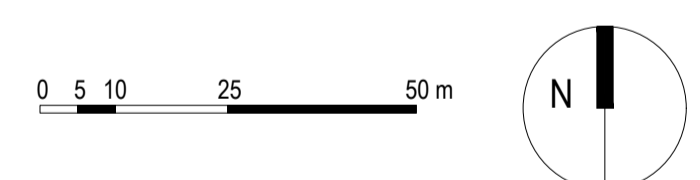
**Note:**

1. In the event that building positions move within the limits of deviation set out in the parameter plans, the landscape zones will be adjusted to match any deviation from the current layout.

2. Please refer to Squires and Partners Drawing 18125\_C645\_Z2\_P\_PR\_001\_D,002\_D, 003\_D, 004\_D,005\_D and 013\_D.

REFER TO APPLICATION A  
DEVELOPMENT AREA 1 DETAILS

REFER TO APPLICATION B  
FOR SCHOOL



STAG BREWERY Project title

Hard & Soft Landscape Parameter Plan Drawing title

PLANNING	Drawing status	1:1000 @ A1	Scale	Drawn
		AS		AS
P10736-00-004-GIL-0120	Date	11.03.2022	Date	Checked
		JG		JG
	Drawing number		Revision	
				P00

Client  
**DARTMOUTH CAPITAL**  
 Alameda House, 90-100 Sydney Street, London SW3 8NJ  
 P: 0207 620 0239

