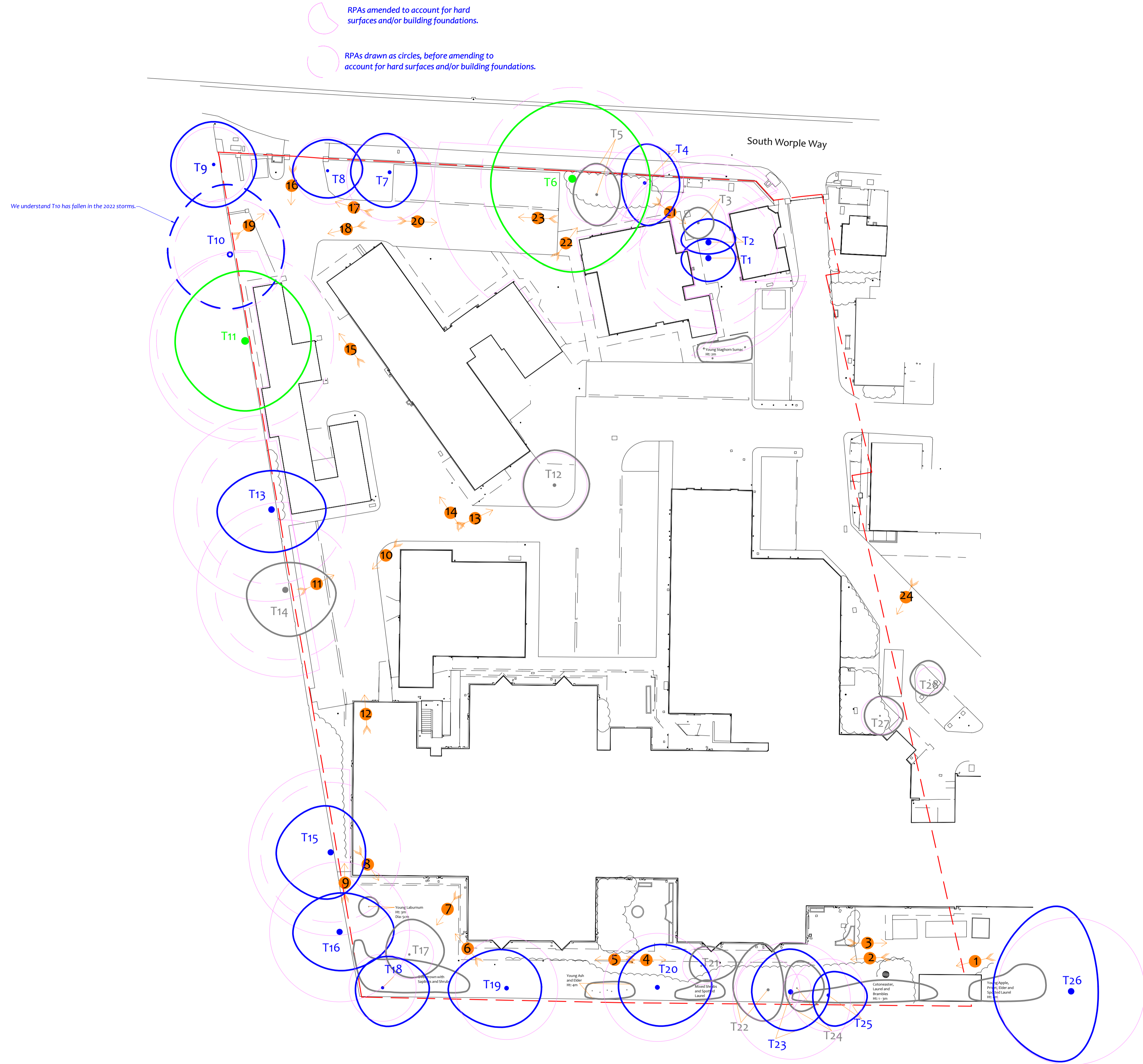




Tree Constraints Plan
(Existing Layout)



Tree Ref.	Species	Height (m)	Root Protection Area	
			Radius (m)	Area (m ²)
T1	Lombardy Poplar	16	9.0	254
T2	Lombardy Poplar	16	8.9	248
T3	Holly	8	3.6	41
T4	Lime	13	5.0	80
T5	Lime	7	3.8	46
T6	London Plane	17	11.8	434
T7	Lime	8.5	5.5	96
T8	Lime	10	4.3	59
T9	Horse Chestnut	10	4.8	72
T10	Horse Chestnut	16	7.2	163
T11	Horse Chestnut	17	11.4	408
T12	Cherry	5	4.2	55
T13	Horse Chestnut	15	9.6	290
T14	Horse Chestnut	14	9.0	254
T15	Horse Chestnut	17	9.0	254
T16	Horse Chestnut	19	9.0	254
T17	Silver Maple	7	3.1	31
T18	Ash	9	4.3	59
T19	Bhutan Pine	13	6.6	137
T20	Bhutan Pine	13	7.0	152
T21	Silver Birch	8.5	2.4	18
T22	False Acacia	9	4.1	52
T23	Bhutan Pine	16	7.6	180
T24	False Acacia	6	1.8	10
T25	Bhutan Pine	12	4.7	69
T26	London Plane	16	9.5	282
T27	Silver Birch	8.5	2.4	18
T28	Bhutan Pine	6	1.7	9

Drawing No: CCL 10770 / TCP Rev 3
 Title: Tree Constraints Plan (Existing Layout)
 Site: Barnes Hospital SW14 8SU
 Scale: 1:300 Paper Size: A1



Tree Retention Categories
 Stems & canopies shown

- Category A tree
- Category B tree
- Category C tree
- Category U tree

Trees of high quality with an estimated life expectancy of 40+ years. Usually large trees with significant presence or smaller trees with excellent form. Retention of these trees is highly desirable.

Trees of moderate quality with a life expectancy of 20+ years. Usually maturing trees or younger trees with good form. Retention of these trees is desirable though less than Category A trees.

Unremarkable trees of low quality and merit. Individual specimens are not considered to be a material planning consideration.

Trees unsuitable for retention due to their very poor condition.

Tree Constraints Plan

BS 5837 Root Protection Area (radius = 1x stem diameter)

Root Protection Area needing amendment due to site conditions, e.g. presence of existing road or building.

Root Protection Area having been amended to account for site conditions

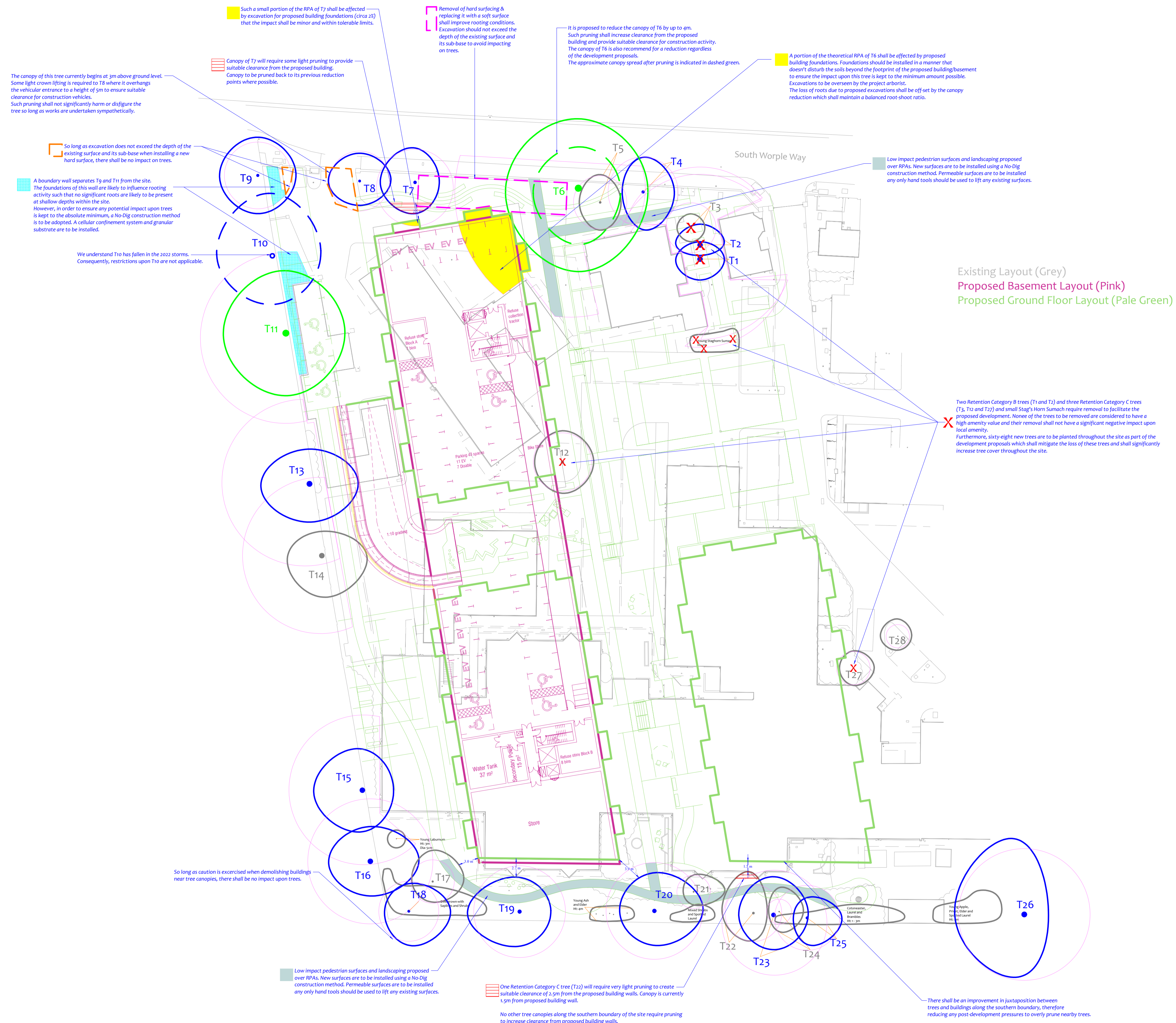
T1 = Tree No 1 G2 = Group No 2 H3 = Hedge No 3

X Tree to be removed to facilitate the proposal
 X Tree to be removed due to its low quality
 Proposed pruning



Impact Assessment Plan

(Existing Layout with Proposals Overlay)



Drawing No: CCL 10770 / IAP Rev: 2
 Title: Impact Assessment Plan (Existing Layout with Proposals Overlay)
 Site: Barnes Hospital SW14 8SU
 Scale: 1:300 Paper Size: A1



Tree Retention Categories	
	Category A tree
	Category B tree
	Category C tree
	Category U tree

Trees of high quality with an estimated life expectancy of 40+ years. Usually large trees with significant presence or smaller trees with excellent form. Retention of these trees is highly desirable.

Trees of moderate quality with a life expectancy of 20+ years. Usually maturing trees, or younger trees with good form. Retention of these trees is desirable though less than Category A trees.

Unremarkable trees of low quality and merit. Individual specimens are not considered to be a material planning consideration.

Trees unsuitable for retention due to their very poor condition.

Impact Assessment Plan

	B5 S37 Root Protection Area (radius = 1xstem diameter)
	Root Protection Area needing amendment due to site conditions, e.g. presence of existing road or building.
	Root Protection Area having been amended to account for site conditions
	Tree to be removed to facilitate the proposal
	Tree to be removed due to its low quality
	Proposed pruning

T1 = Tree No 1 G2 = Group No 2 H3 = Hedge No 3

Tree Ref.	Species	Height (m)	Root Protection Area		
			Radius (m)	Square (m ²)	
T1	Lombardy Poplar	16	9.0	254	16.0
T2	Lombardy Poplar	16	6.9	248	15.7
T3	Holly	8	3.6	41	6.4
T4	Lime	13	5.0	80	8.9
T5	Lime	7	3.8	46	6.8
T6	London Plane	17	11.8	434	20.8
T7	Lime	8.5	5.5	96	9.8
T8	Lime	10	4.3	59	7.7
T9	Horse Chestnut	10	4.8	72	8.5
T10	Horse Chestnut	16	7.2	163	12.8
T11	Horse Chestnut	17	11.4	408	20.2
T12	Cherry	5	4.2	55	7.4
T13	Horse Chestnut	15	9.6	290	17.0
T14	Horse Chestnut	14	9.0	254	16.0
T15	Horse Chestnut	17	9.0	254	16.0
T16	Horse Chestnut	19	9.0	254	16.0
T17	Silver Maple	7	3.1	31	5.5
T18	Ash	9	4.3	59	7.7
T19	Bhutan Pine	13	6.6	137	11.7
T20	Bhutan Pine	13	7.0	152	12.3
T21	Silver Birch	8.5	2.4	18	4.3
T22	False Acacia	9	4.1	52	7.2
T23	Bhutan Pine	16	7.6	180	13.4
T24	False Acacia	6	1.8	10	3.2
T25	Bhutan Pine	12	4.7	69	8.3
T26	London Plane	16	9.5	282	16.8
T27	Silver Birch	8.5	2.4	18	4.3
T28	Bhutan Pine	6	1.7	9	3.0

