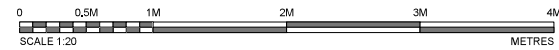


Proposed Shopfront Signage Details



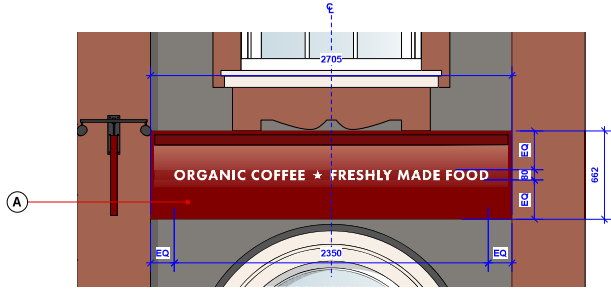
Important Note:
This drawing is copyright of Studio Fox Ltd and no portion should be used without consent. All dimensions and levels on this drawing are to be checked on site by the contractor and any discrepancies reported to Studio Fox Ltd, prior to commencement of any work. If in doubt ask!

Drawing Status:

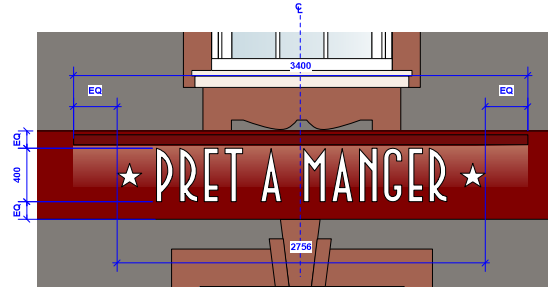
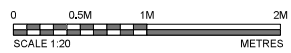
Stage	Status
Design Review:	✓
Blue Print Meeting:	
For Construction:	
As Built:	

Revision:

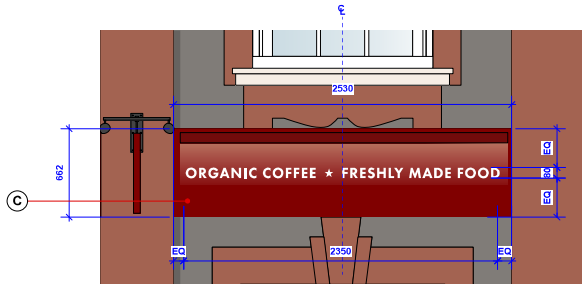
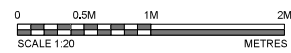
Revision:	Date:	By:	Description:
A	11.03.22	RL	Signage updated as per Pret Comments.
B	16.03.22	MC	Sign type F omitted. Sign type E to be non illuminated.



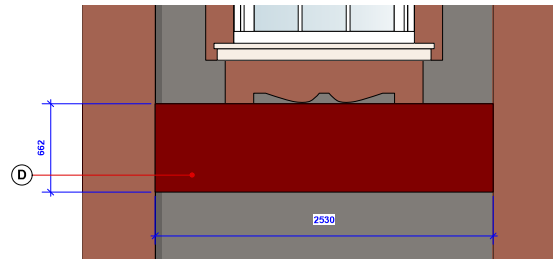
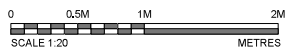
**Sign Type A
Front Elevation**
Scale 1:20 @ A1



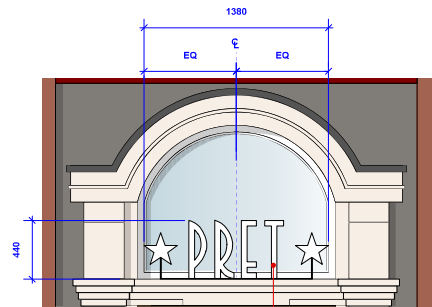
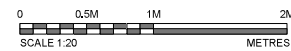
**Sign Type B
Front Elevation**
Scale 1:20 @ A1



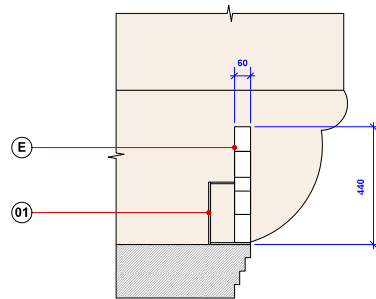
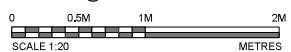
**Sign Type C
Front Elevation**
Scale 1:20 @ A1



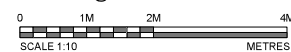
**Sign Type D
Front Elevation**
Scale 1:20 @ A1



**Sign Type E
Front Elevation**
Scale 1:20 @ A1



**Sign Type E
Section**
Scale 1:10 @ A1



Notes:

01	New stainless steel bracket to support non illuminated PRET letters & star above main entrance. Letters to sit on base of bracket. Stars to be raised. Refer to front elevation. Bracket stainless steel. Signage supplier to provide details for approval.
Signage:	
A	Externally illuminated curved powder coated aluminium panel, RAL 3004, 'Organic Coffee * Freshly Made Food' 10mm deep fret cut matt white letters & star adhered flush to the fascia panel. Overhead lighting via externally mounted LED light trough powder coated RAL 3004. Modules will require a 12v power supply unit. Illumination levels not to exceed 150cd/m ² .
B	Externally illuminated curved powder coated aluminium panel, RAL 3004, * PRET A MANGER * 20mm deep fret cut matt white letters & star adhered flush to the fascia panel. Overhead lighting via externally mounted LED light trough powder coated RAL 3004. Modules will require a 12v power supply unit. Illumination levels not to exceed 150cd/m ² .
C	Externally illuminated curved powder coated aluminium panel, RAL 3004, 'Organic Coffee * Freshly Made Food' 10mm deep fret cut matt white letters & star adhered flush to the fascia panel. Overhead lighting via externally mounted LED light trough powder coated RAL 3004. Modules will require a 12v power supply unit. Illumination levels not to exceed 150cd/m ² .
D	Non illuminated curved powder coated aluminium panel, RAL 3004.
E	Non illuminated: * PRET * 60mm deep built up individual letters with s/s side returns matt white front face to letters & star.
F	Individual fret cut white non illuminated letters: * PRET A MANGER * non illuminated letters applied to new powder coated aluminium panel RAL 3004. Backing panel to suit existing system (consult with the glazing details to be discussed).



Client:
Pret a Manger

Project:
6 High Street Teddington TW11 8EW

Task:
Proposed Shopfront Signage Details

Drawn By:	Scale:	Drawn Date:	Revised Date:
GFF	1:20 (A1)	24.01.22	11.03.22

Drawing No:
22-PRET-1TED/02.3

Revision:
A

Studio Fox Ltd
E: studio@studiofox.co.uk