

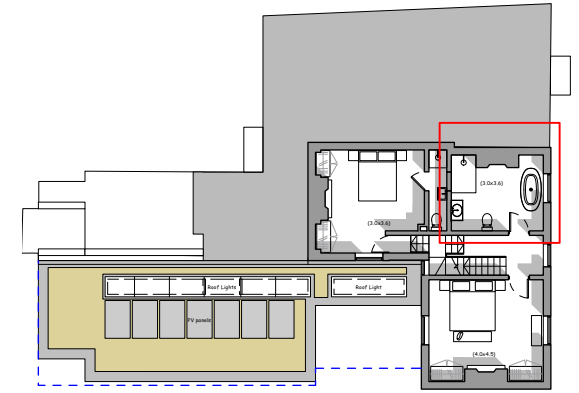
PLANNING

RED NOTES/ SHOW AMENDMENTS TO ORIGINAL PLANNING APPLICATION

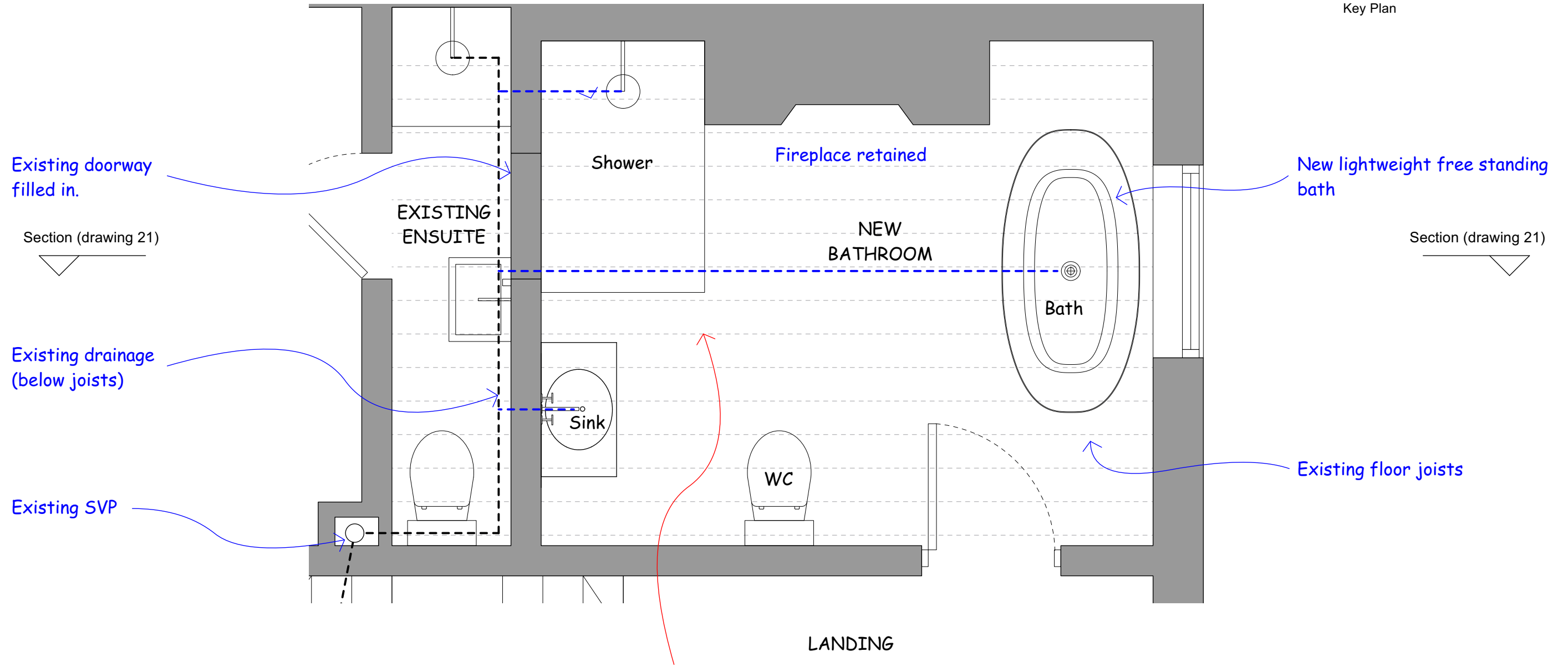
NEW BATHROOM

New water supply & drainage runs between existing floor joists, connecting to existing drainage in adjoining WC.
Access for works from floor above to avoid damage to ceiling below

- Existing drainage
- Proposed drainage
- Existing Floor Joists



Key Plan



Original application proposals for internal partions removed to ensure minmial impact on existing building fabric.