

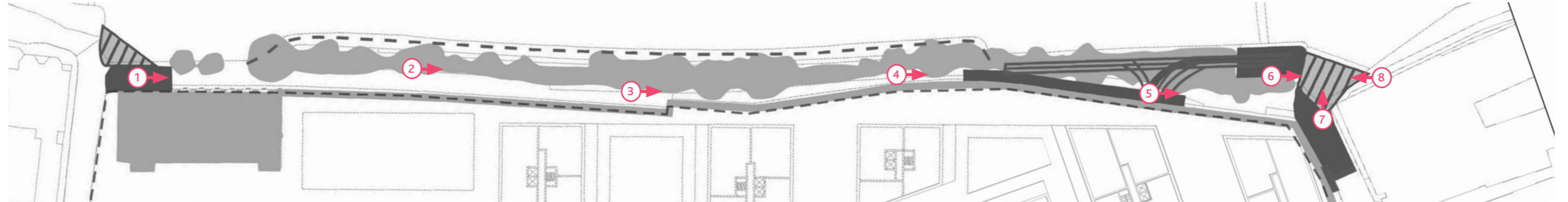
THIS PAGE IS INTENTIONALLY BLANK

EXISTING TOWPATH



TOWPATH

SITE PHOTOS



01



02



03



04



05



06



07



08



PROPOSED TOWPATH

The existing river wall has historical value and as part of heritage approach to the site, where feasible, sections of the existing river wall are retained and integrated into the new flood protection wall for the site.

The Maltings building provides a landmark for the site and the locale, along with the public draw dock area and with upgrade works associated with the site development, will become focal points for people to relax and gather.



PROPOSED TOWPATH

The proposals for the Stag Brewery site provides multiple access routes to and from the River Thames. Three stepped access points linking the Towpath and river terrace will be provided. Maltings Plaza will have grand steps and a graded access connecting the plaza to the Towpath.

CONNECTIVITY

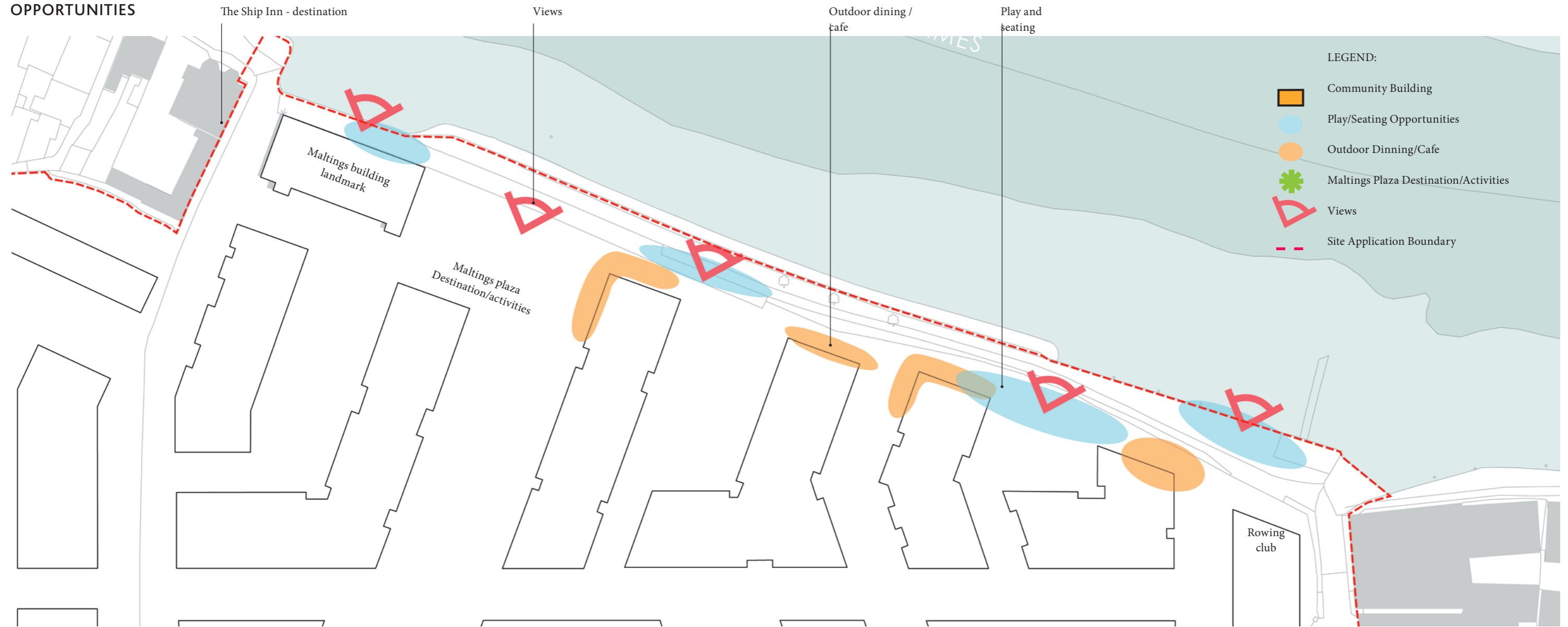


PROPOSED TOWPATH

The Towpath and adjacent river terrace present many opportunities for incidental and play on the way associated with the activated ground floor frontages of the new riverside buildings.

With careful management of the vegetation along Towpath, existing regrowth will be improved and strengthened where appropriate, and strategic views of the River Thames will be opened up for more people to enjoy.

OPPORTUNITIES



PROPOSED TOWPATH

SCHEMATIC LAYOUT



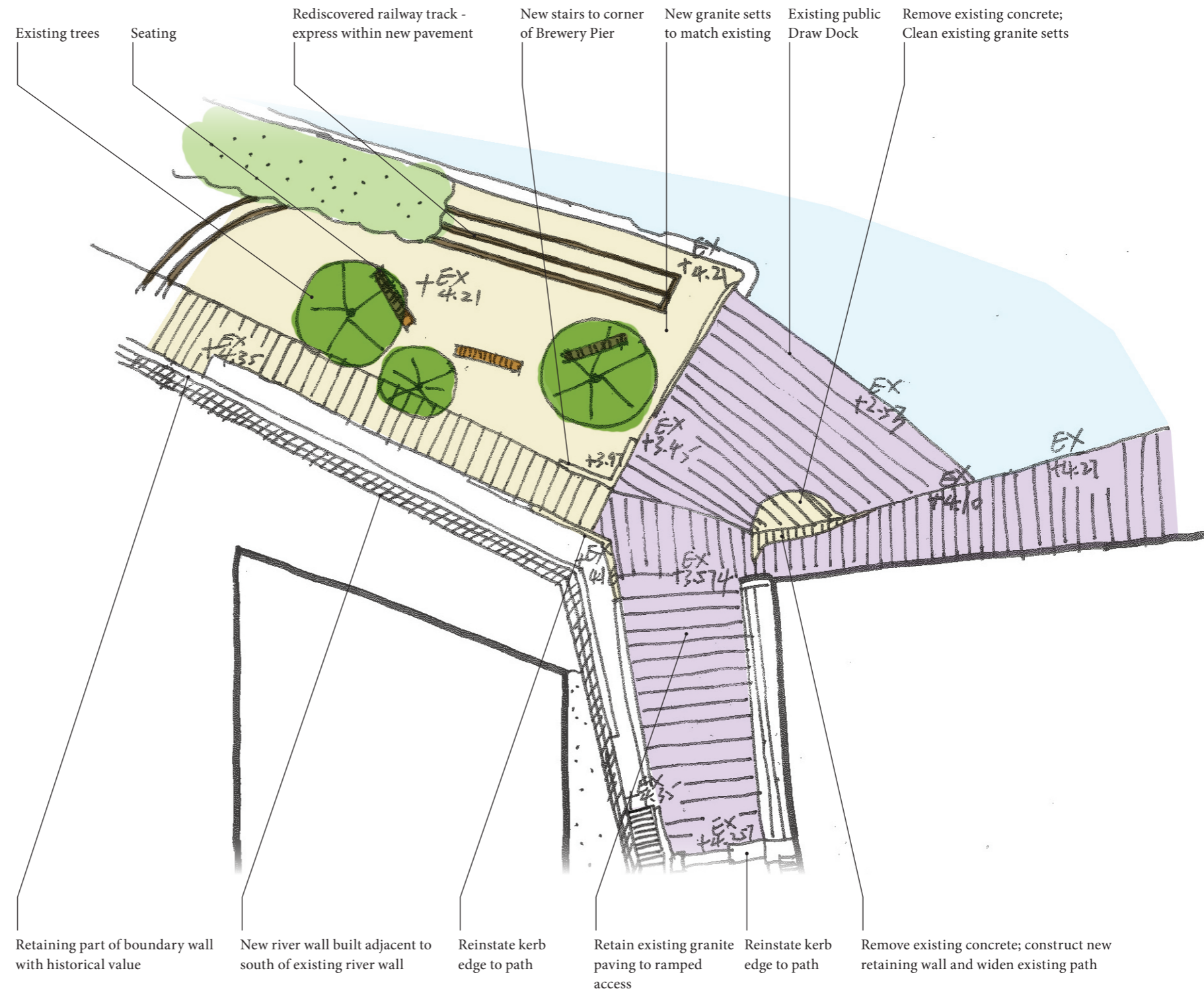
PROPOSED TOWPATH

PUBLIC DRAW DOCK

The public draw dock at Bulls Alley is a key part of the retained heritage of the site and wider area. The granite setts, railway / crane tracks and remnant stone quayside elements will be retained and where feasible, reinstated to reflect the working dock.

Additional seating and interpretative signage is proposed to be included in the new paved dock area to create a more formal and engaging location on the Towpath.

Some amendments to existing kerbs and paving will be required to integrate with proposed works and access into the Rowing Club storage area.

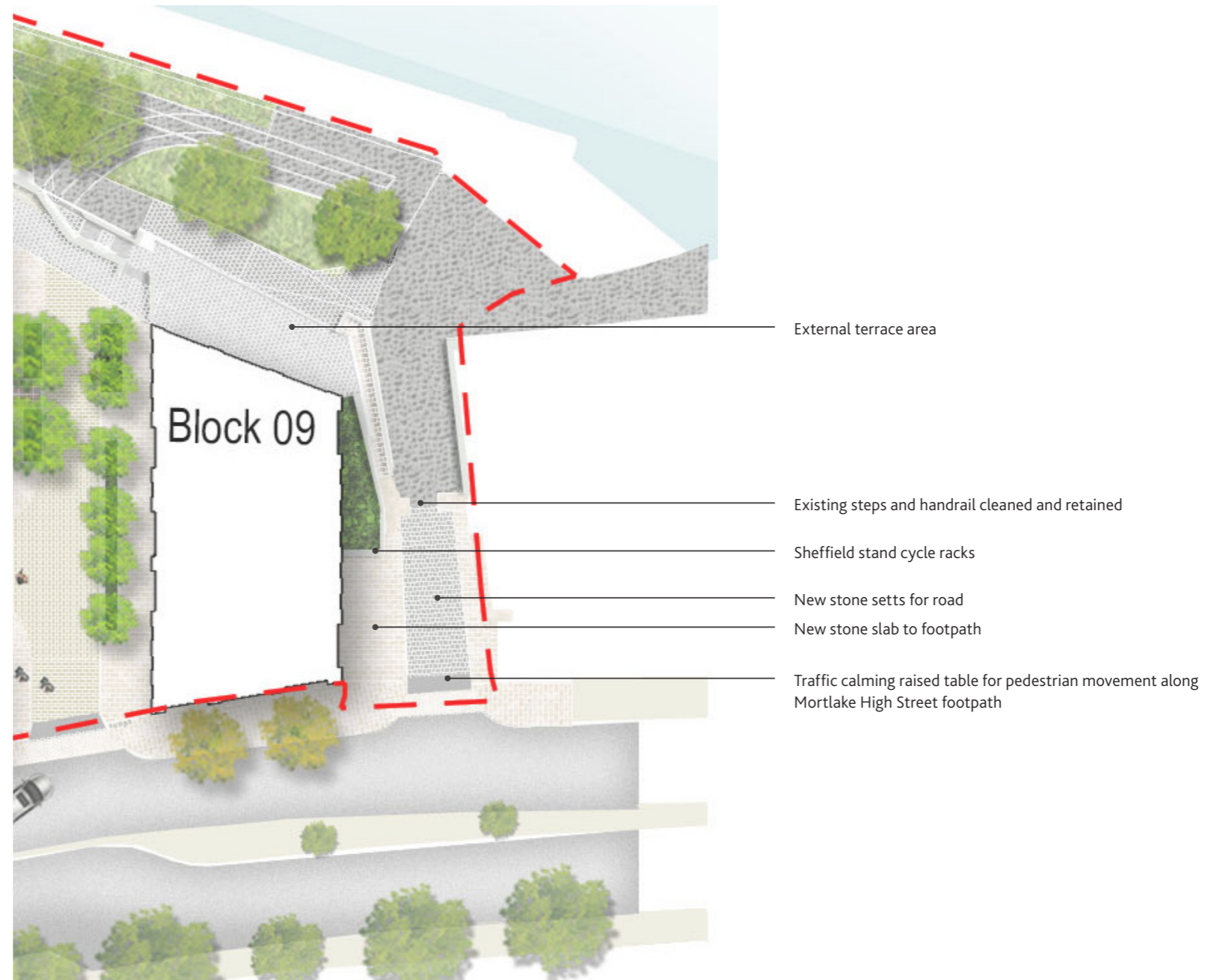


BULLS ALLEY

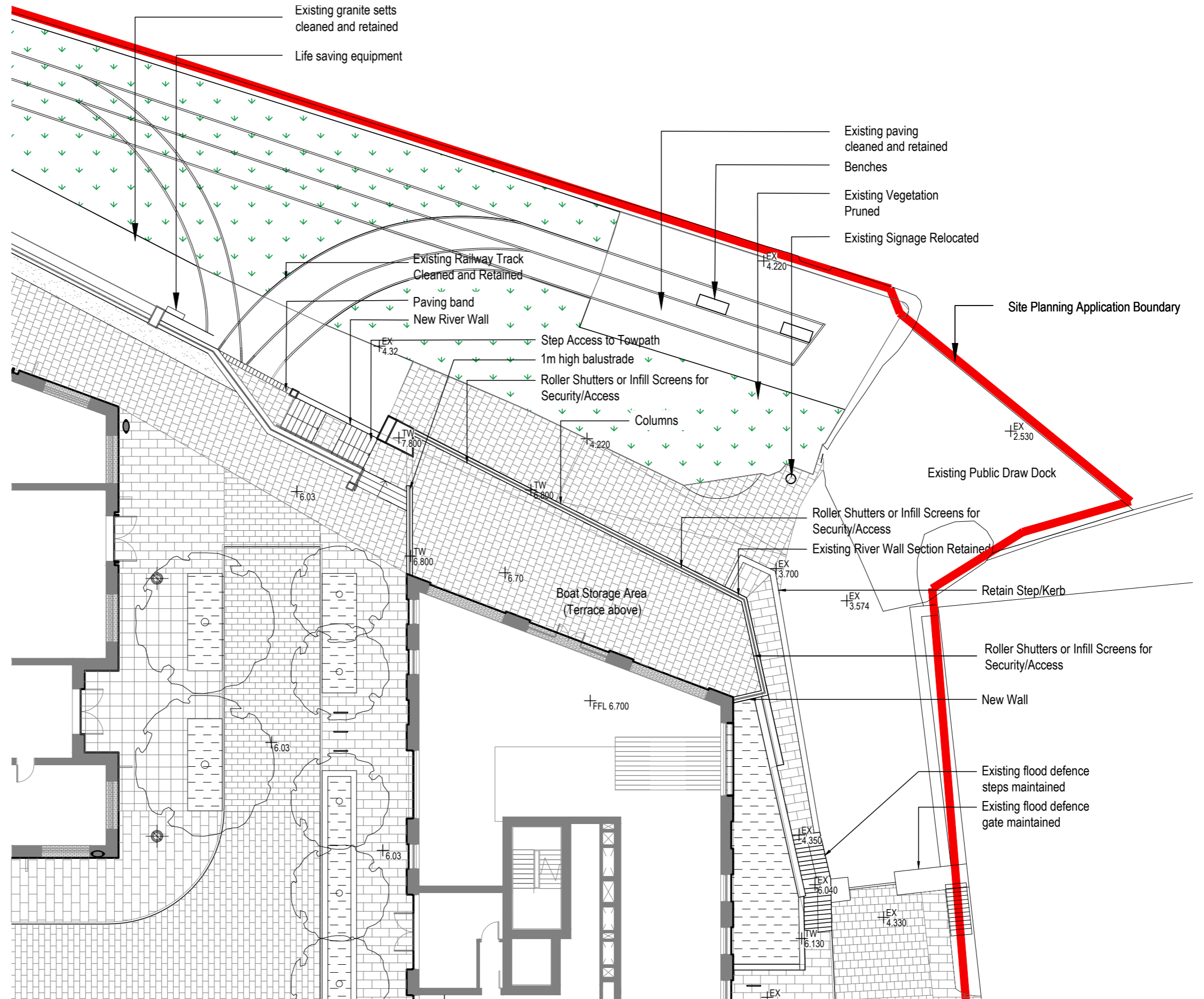
While the Flood Barrier is retained in situ, a number of amendments to this section of the site and Building 9 are proposed following discussions with Environment Agency regarding flood protection. This has resulted in changes to the Rowing Clubhouse and access and storage for boats.

A number of improvements had been proposed to the Tow Path including upgrading pavement and historic interpretation related to the existing setts and rail tracks from the Brewery crane and remnants of the wharf in this location. These are illustrated in the drawings on the following pages.

To the south of the flood gates an upgrade to the pavement is proposed to define vehicle access and pedestrian priority along Mortlake High Street through the introduction of a raised table, additional cycle parking stands will also be included in this area. The existing brewery wall will be cut back and re-aligned to follow the proposed Block 9 configuration.



BLOCK 9 TOWPATH LEVEL REDESIGN



TOWPATH PRECEDENT IMAGES



THIS PAGE IS INTENTIONALLY BLANK