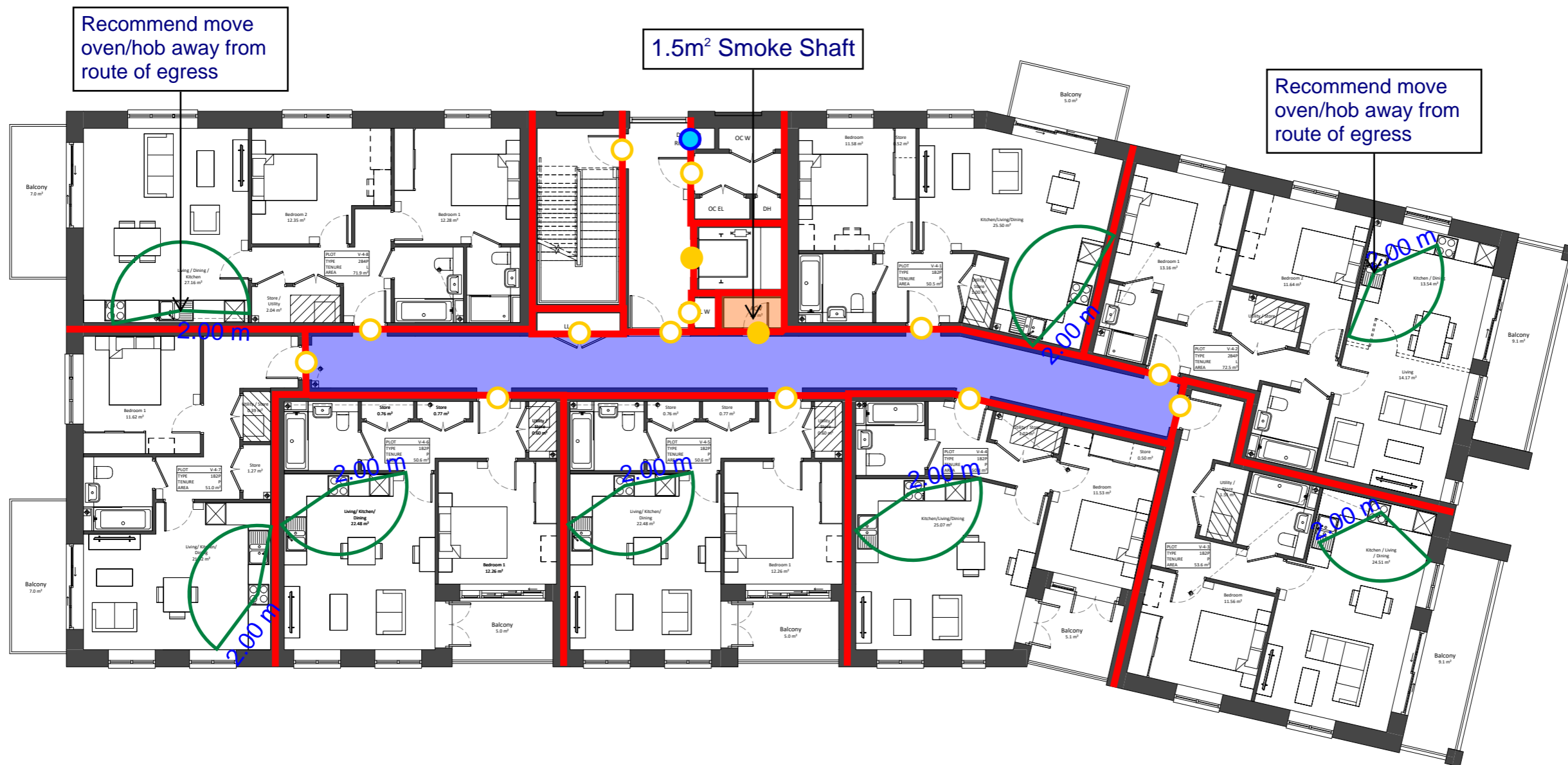


1.5m<sup>2</sup> Smoke Shaft

Project Name:		Ham Close, Richmond - Residential					
Drawing Name:		Block V - Third Floor					
Drawing Reference:		AFF_20700_01_Ham Close, Richmond - Residential_FSD_03					
Date:	07/04/2022	Drawn By	QC	Checked By	ED	Approved By	JO

Legend:				
Alternative Exit	FD30 Door	FD30S Door	30/30/30 FRR	Dry Riser Outlet
FD60 Door	FD60S Door	60/60/60 FRR	Dry Riser Inlet	Fire Hydrant
FD90 Door	FD90S Door	90/90/90 FRR		
FD120 Door	FD120S Door	120/120/120 FRR		





Recommend move oven/hob away from route of egress

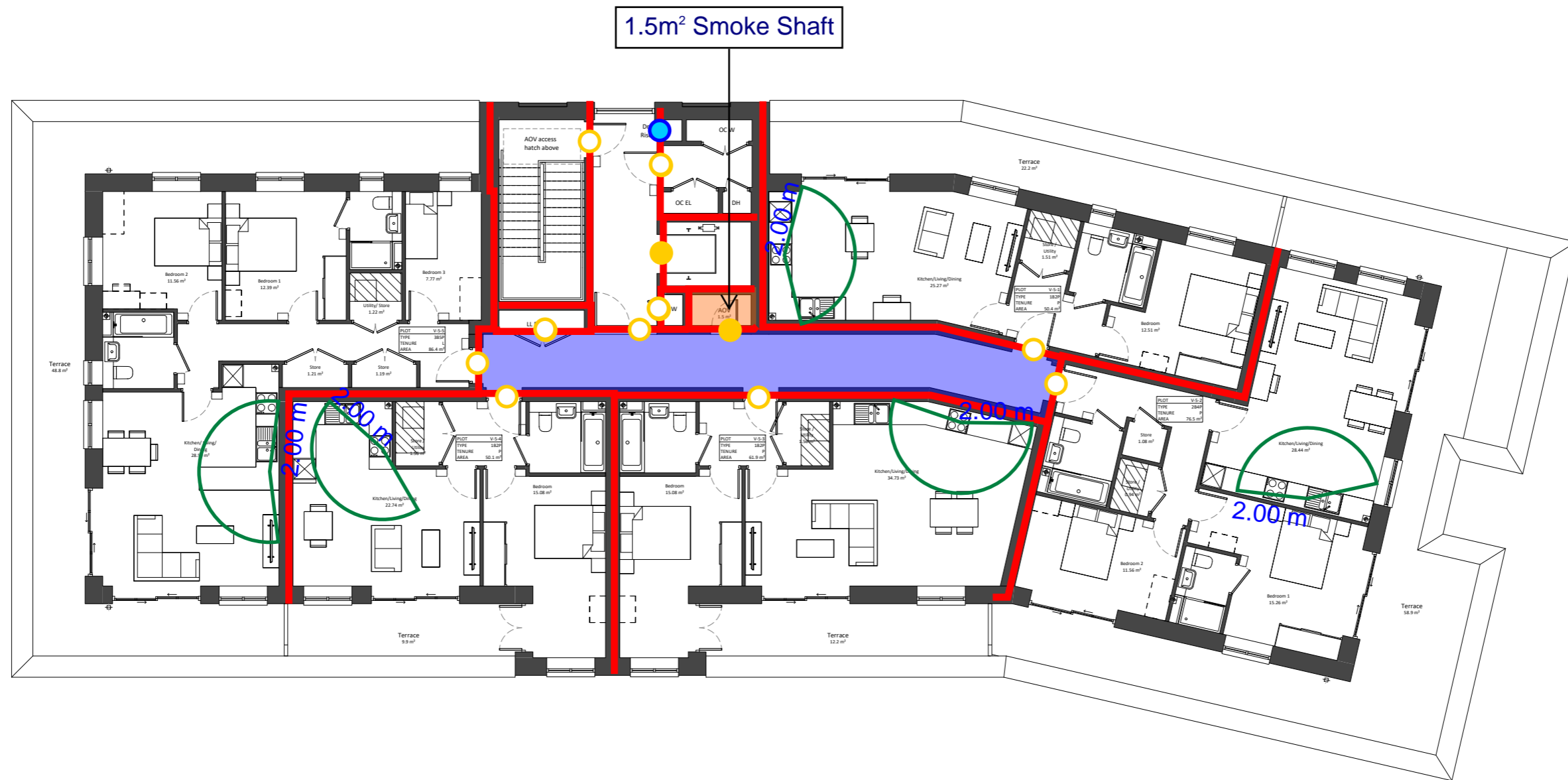
1.5m<sup>2</sup> Smoke Shaft

Recommend move oven/hob away from route of egress

Project Name:		Ham Close, Richmond - Residential					
Drawing Name:		Block V - Fourth Floor					
Drawing Reference:		AFF_20700_01_Ham Close, Richmond - Residential_FSD_03					
Date:	07/04/2022	Drawn By	QC	Checked By	ED	Approved By	JO

Legend:						
Alternative Exit	FD30 Door	FD30S Door	30/30/30 FRR	Dry Riser Outlet		
	FD60 Door	FD60S Door	60/60/60 FRR	Dry Riser Inlet		
	FD90 Door	FD90S Door	90/90/90 FRR	Fire Hydrant		
	FD120 Door	FD120S Door	120/120/120 FRR			





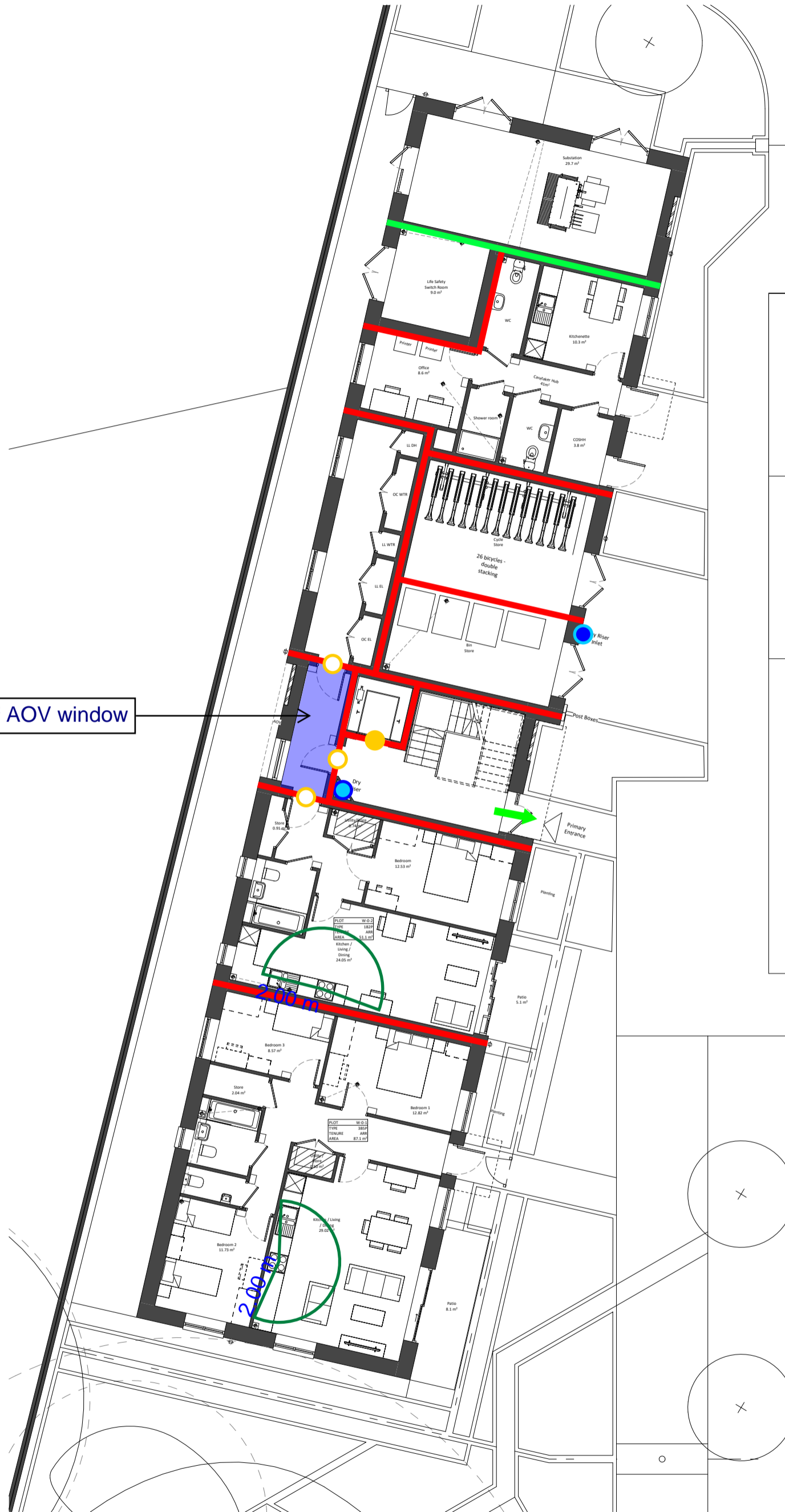
Project Name:		Ham Close, Richmond - Residential					
Drawing Name:		Block V - Fifth Floor					
Drawing Reference:		AFF_20700_01_Ham Close, Richmond - Residential_FSD_03					
Date:	07/04/2022	Drawn By	QC	Checked By	ED	Approved By	JO

Legend:						
Alternative Exit	FD30 Door	FD30S Door	30/30/30 FRR	Dry Riser Outlet		
	FD60 Door	FD60S Door	60/60/60 FRR	Dry Riser Inlet		
	FD90 Door	FD90S Door	90/90/90 FRR	Fire Hydrant		
	FD120 Door	FD120S Door	120/120/120 FRR			

# AFFINITY

FIRE ENGINEERING

1.5m<sup>2</sup> AOV window



Project Name:	Ham Close, Richmond - Residential
Drawing Name:	Block W - Ground Floor
Drawing Reference:	AFF_20700_01_Ham Close, Richmond - Residential_FSD_03
Date:	07/04/2022
Drawn By:	QC
Checked By:	ED
Approved By:	JO

Legend:	
Alternative Exit	FD30 Door
240/240/240 FRR	FD60 Door
30/30/30 FRR	FD90 Door
60/60/60 FRR	FD120 Door
90/90/90 FRR	FD30S Door
120/120/120 FRR	FD60S Door
Dry Riser Outlet	FD90S Door
Dry Riser Inlet	FD120S Door
Fire Hydrant	



1.5m<sup>2</sup> AOV window



Project Name:	Ham Close, Richmond - Residential						
Drawing Name:	Block W - First Floor						
Drawing Reference:	AFF_20700_01_Ham Close, Richmond - Residential_FSD_03						
Date:	07/04/2022	Drawn By	QC	Checked By	ED	Approved By	JO

<b>Legend:</b>	
Alternative Exit	FD30 Door
FD60 Door	FD60S Door
FD90 Door	FD90S Door
FD120 Door	FD120S Door
30/30/30 FRR	60/60/60 FRR
90/90/90 FRR	120/120/120 FRR
Dry Riser Outlet	Dry Riser Inlet
Fire Hydrant	



1.5m<sup>2</sup> AOV window



Project Name:	Ham Close, Richmond - Residential						
Drawing Name:	Block W - Second Floor						
Drawing Reference:	AFF_20700_01_Ham Close, Richmond - Residential_FSD_03						
Date:	07/04/2022	Drawn By	QC	Checked By	ED	Approved By	JO

<b>Legend:</b>				
Alternative Exit	FD30 Door	FD30S Door	30/30/30 FRR	Dry Riser Outlet
FD60 Door	FD60S Door	60/60/60 FRR	Dry Riser Inlet	
FD90 Door	FD90S Door	90/90/90 FRR	Fire Hydrant	
FD120 Door	FD120S Door	120/120/120 FRR		



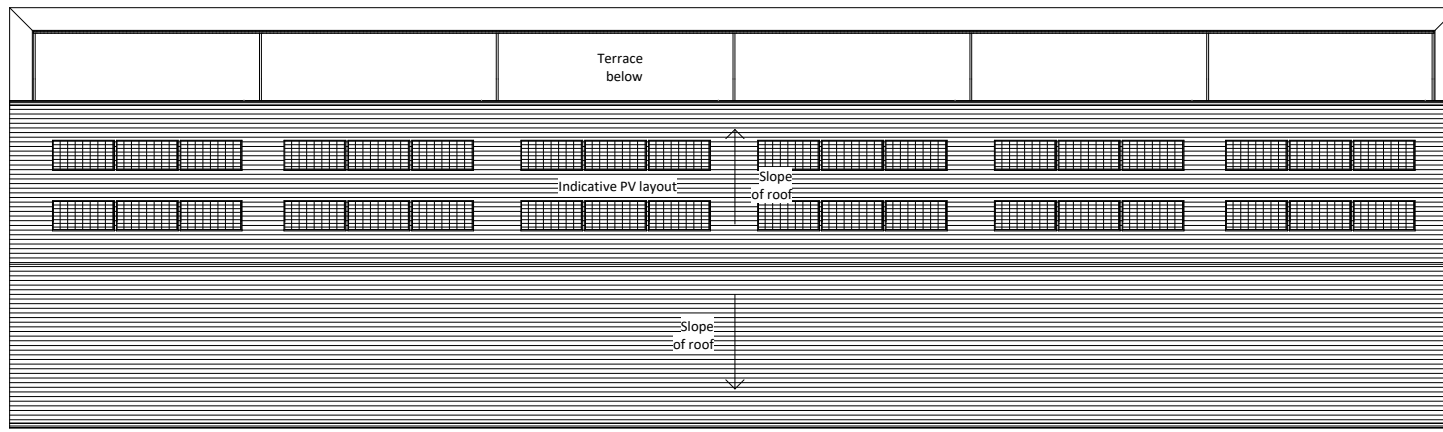
1.5m<sup>2</sup> AOV window



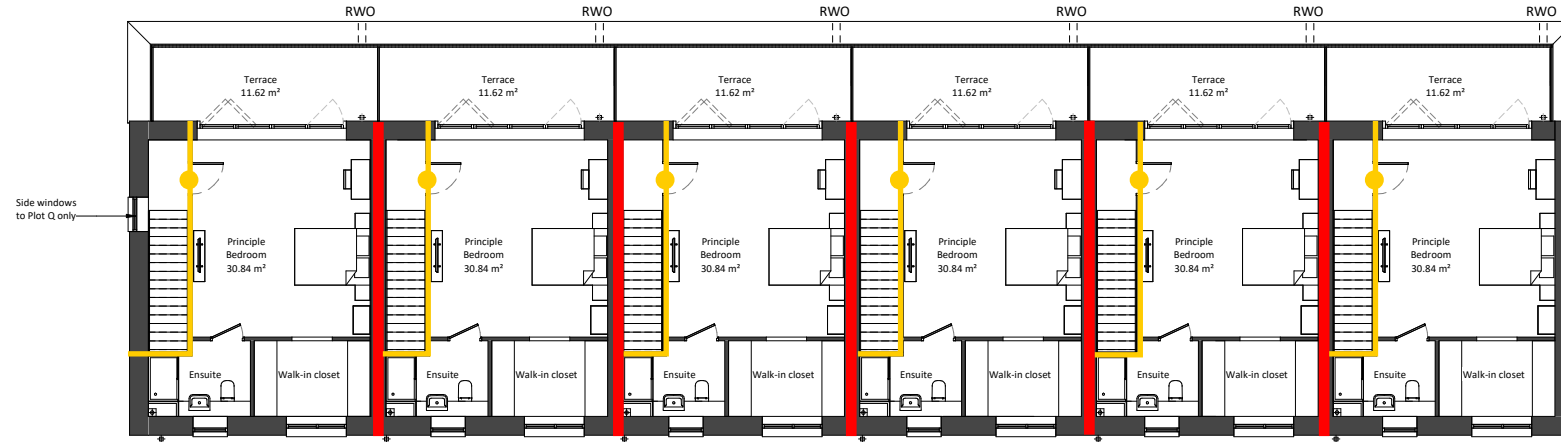
Project Name:	Ham Close, Richmond - Residential						
Drawing Name:	Block W - Third Floor						
Drawing Reference:	AFF_20700_01_Ham Close, Richmond - Residential_FSD_03						
Date:	07/04/2022	Drawn By	QC	Checked By	ED	Approved By	JO

<b>Legend:</b>	
Alternative Exit	FD30 Door
FD60 Door	FD30S Door
FD90 Door	FD60S Door
FD120 Door	FD90S Door
	FD120S Door
30/30/30 FRR	60/60/60 FRR
90/90/90 FRR	120/120/120 FRR
Dry Riser Outlet	Dry Riser Inlet
Fire Hydrant	

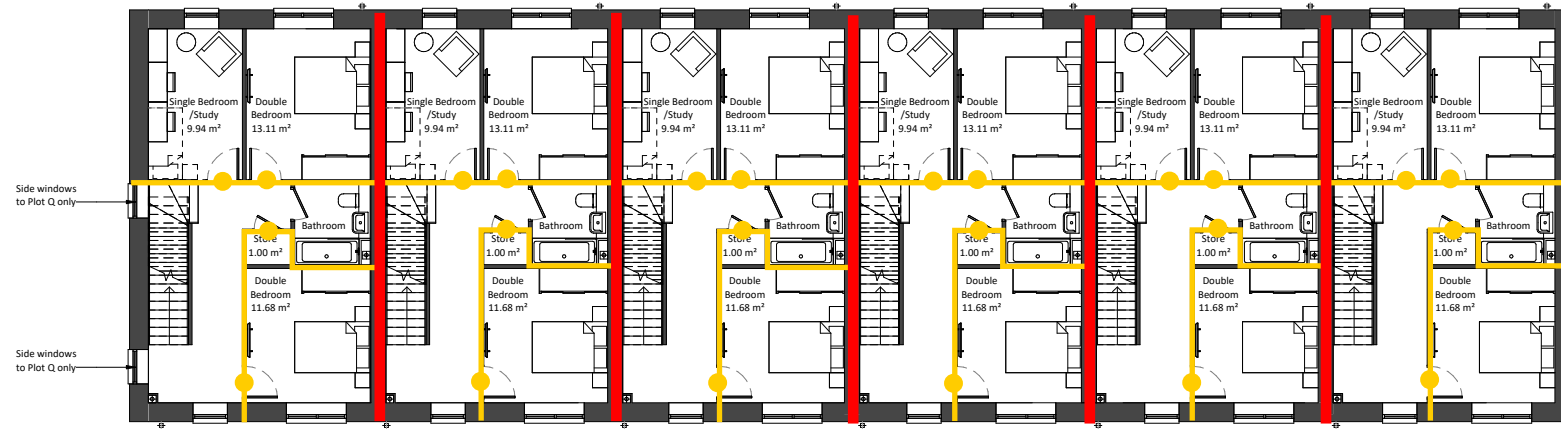




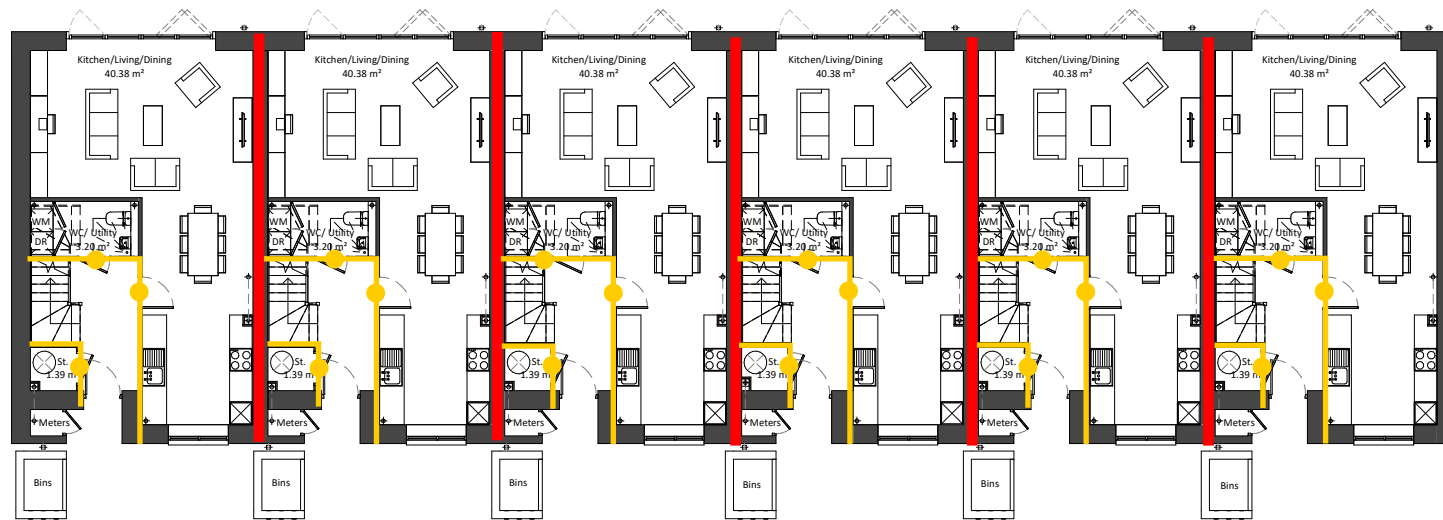
4 Roof Plan  
1 : 100



3 Second Floor  
1 : 100

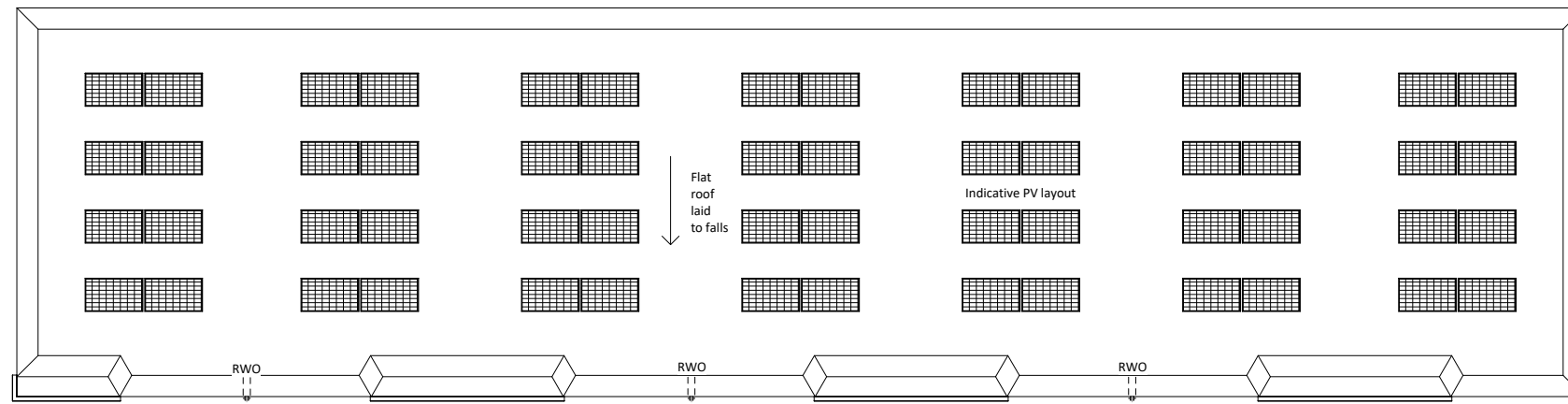


2 First Floor  
1 : 100

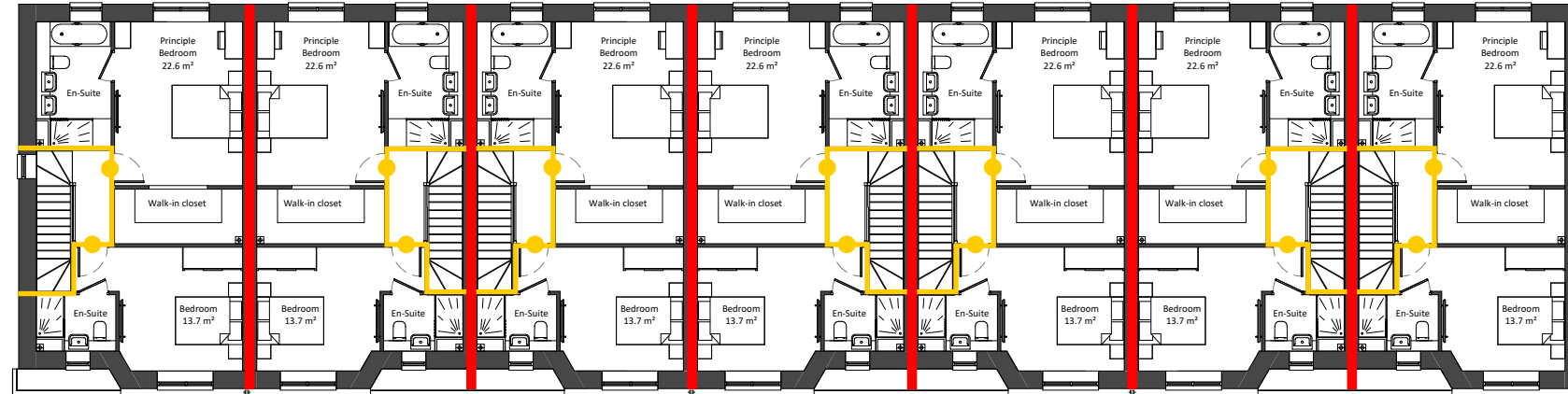


1 Ground Floor  
1 : 100

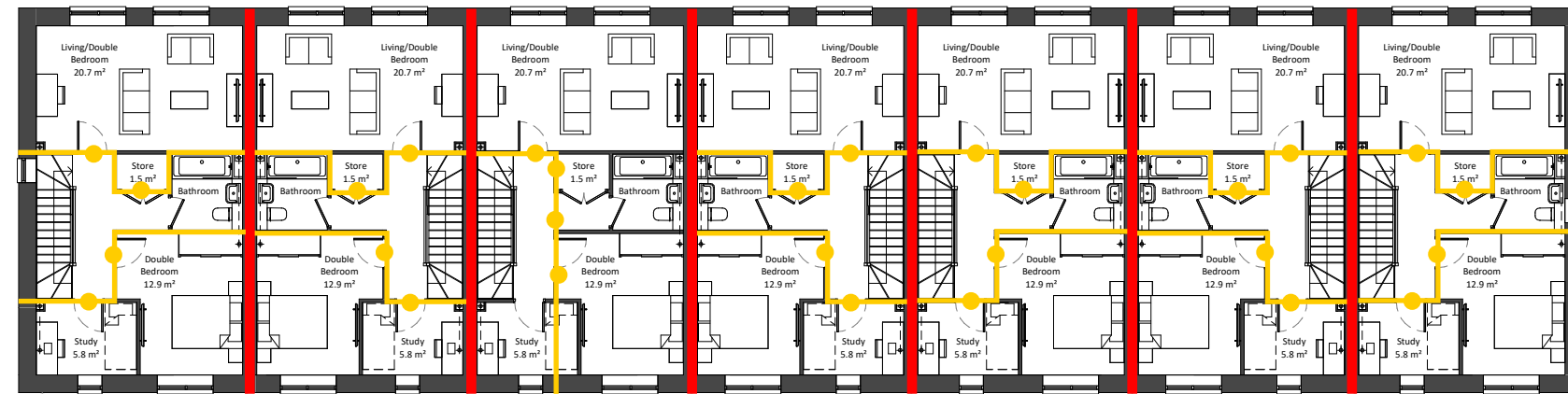




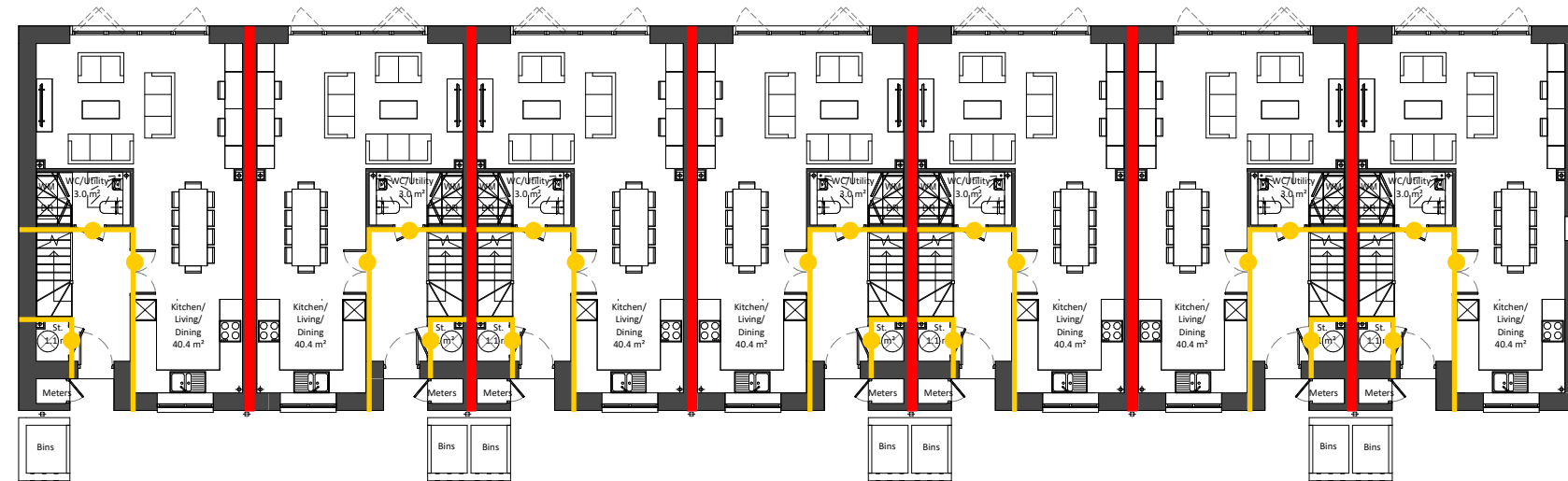
4 Roof Plan  
1 : 100



3 Second Floor  
1 : 100



2 First Floor  
1 : 100

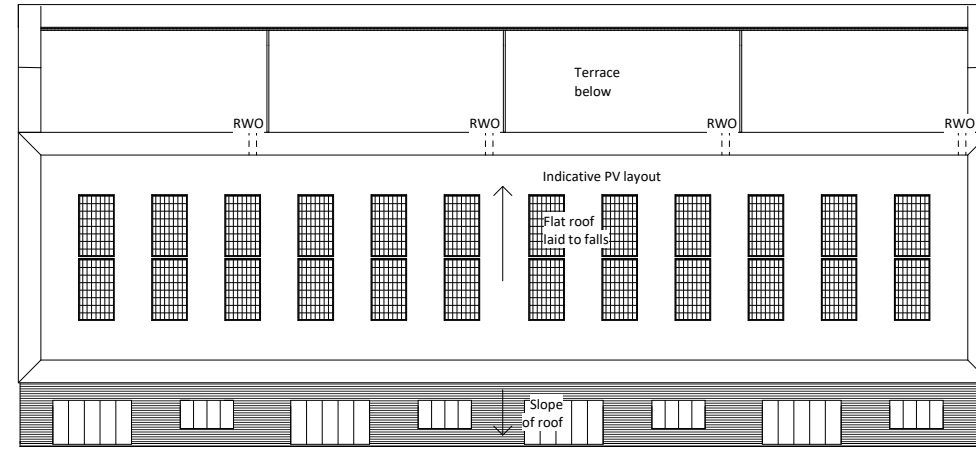


1 Ground Floor  
1 : 100

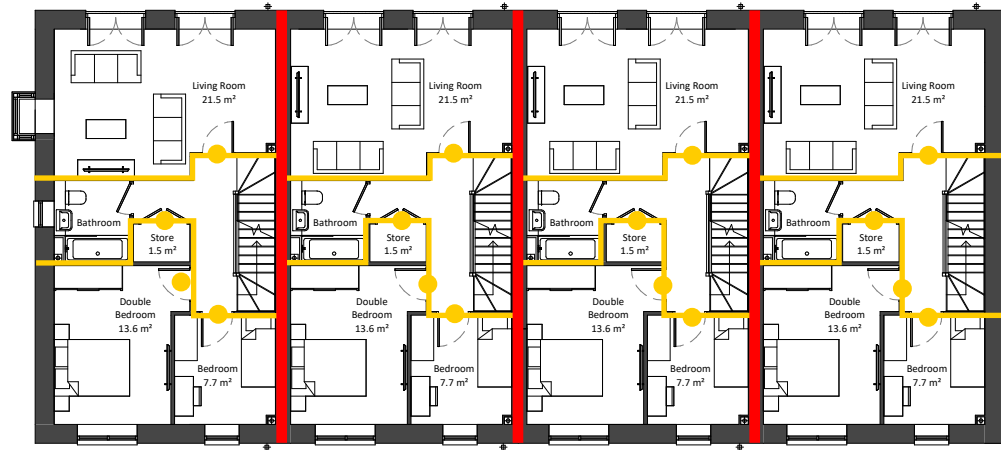
Legend:

- 60/60 FRR
- 30/30/30 FRR
- FD60 Door
- FD30 Door

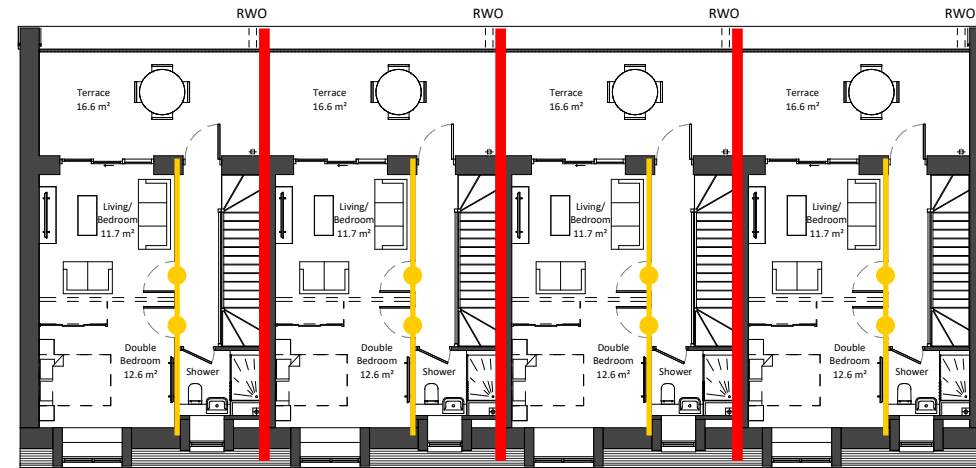
Project Name:	Ham Close, Richmond - Residential	JO
Drawing Name:	Blocks G & K	
Drawing Reference:	AFF_20700_01_Ham Close, Richmond - Residential_FSD_03	
Date:	07/04/2022	
Drawn By:	AM	Approved By:
Checked By:	ED	



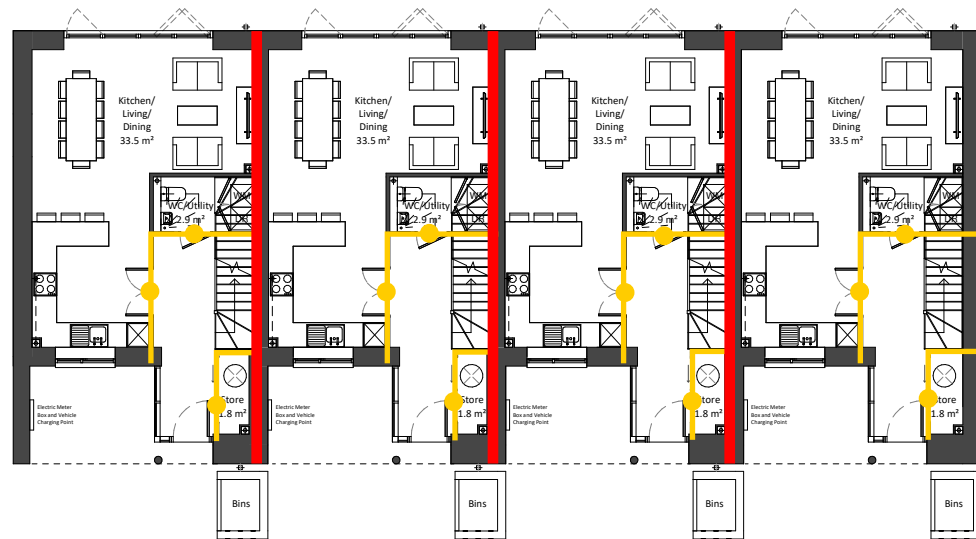
5 Roof Plan  
1 : 100



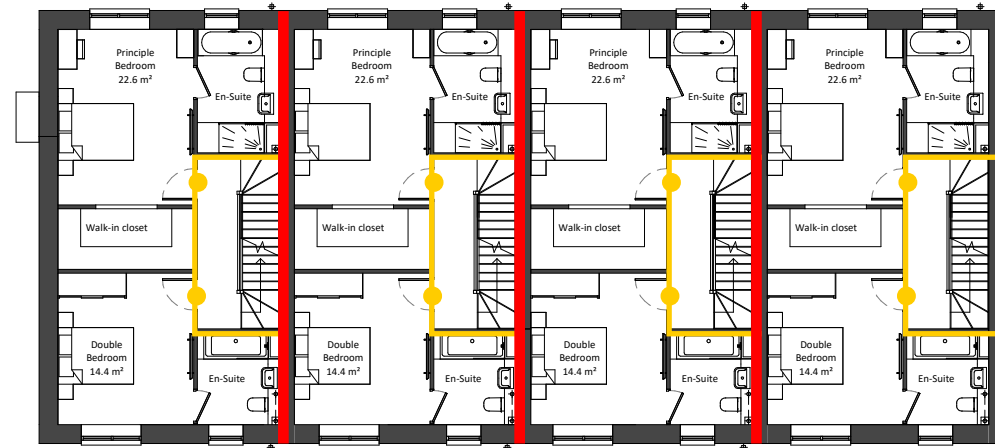
2 First Floor  
1 : 100



4 Third Floor  
1 : 100



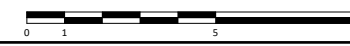
1 Ground Floor  
1 : 100

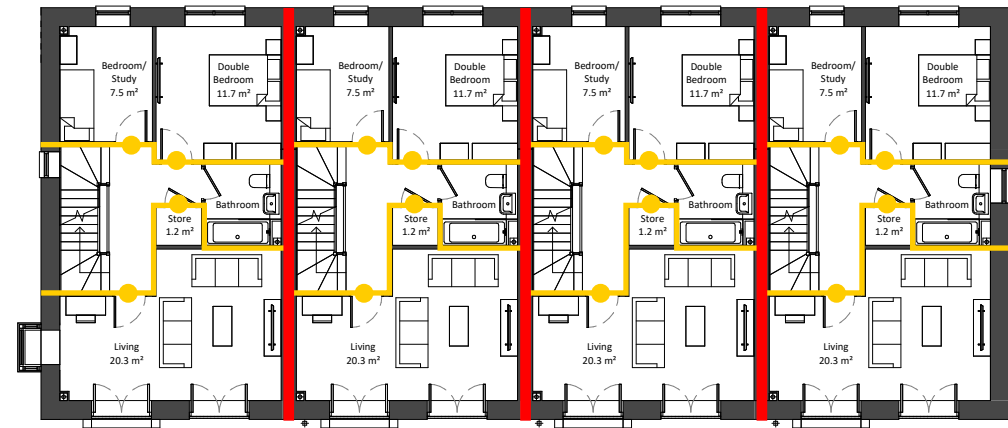


3 Second Floor  
1 : 100

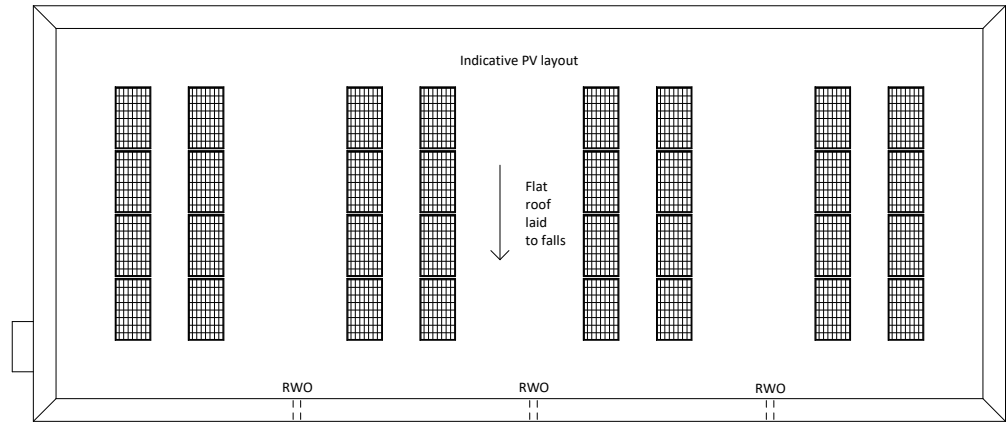
- Legend:
- 60/60/60 FRR
  - 30/30/30 FRR
  - FD60S Door
  - FD30S Door
  - FD60 Door
  - FD30 Door

Project Name:	Ham Close, Richmond - Residential
Drawing Name:	Block J
Drawing Reference:	AFF_20700_01_Ham Close, Richmond - Residential_FSD_03
Date:	07/04/2022
Drawn By:	AM
Checked By:	ED
Approved By:	JO

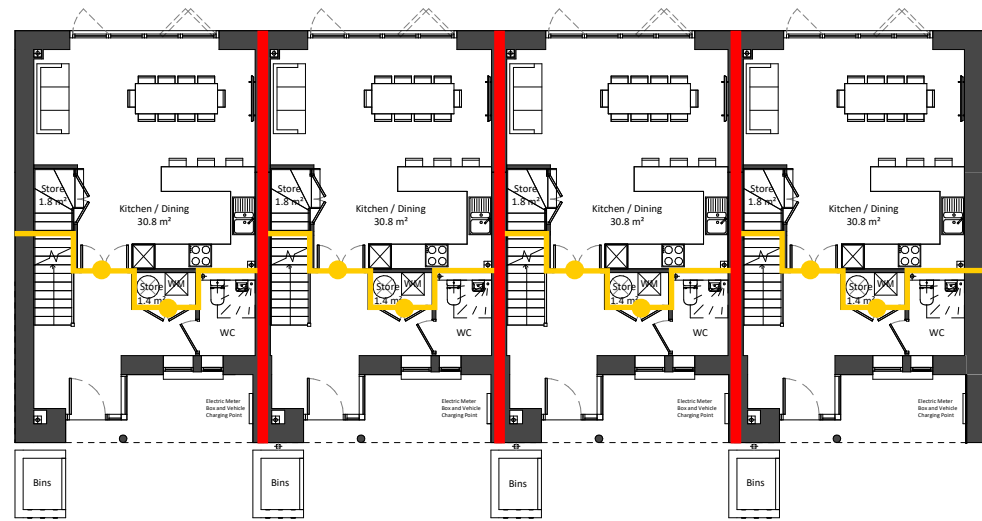




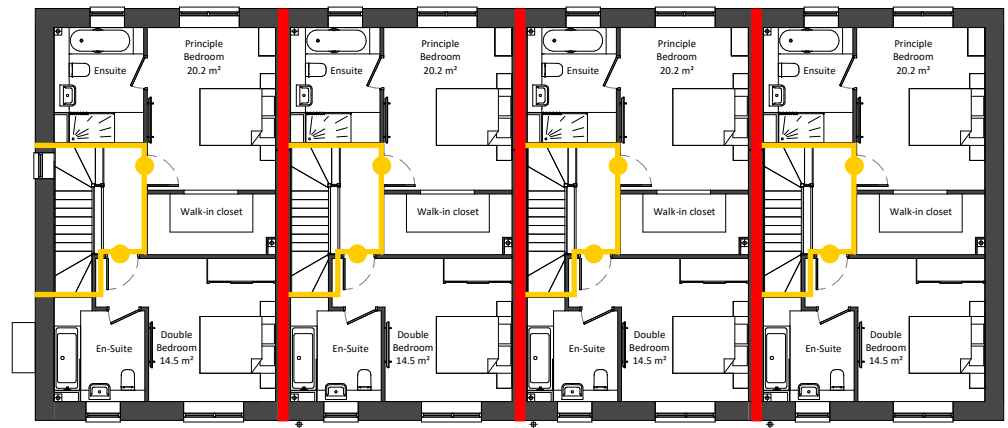
2 First Floor  
1 : 100



4 Roof Plan  
1 : 100



1 Ground Floor  
1 : 100

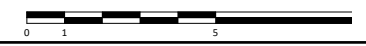


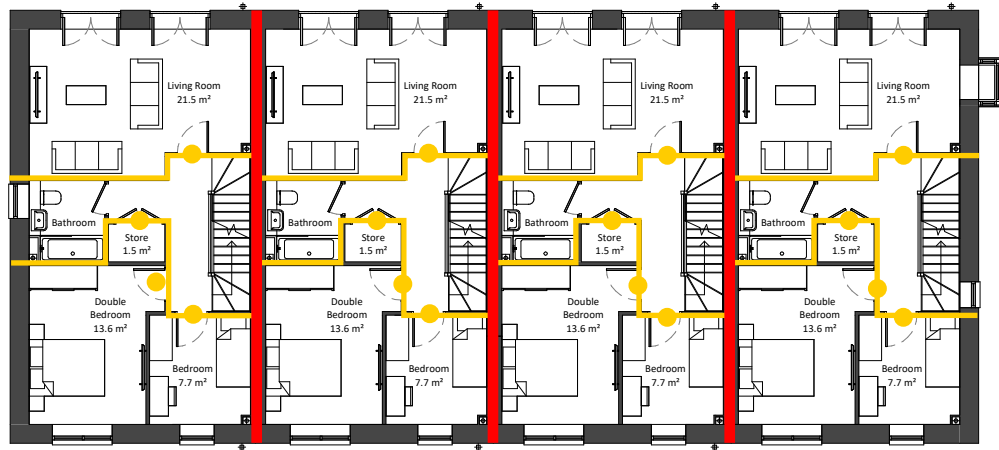
3 Second Floor  
1 : 100

Legend:

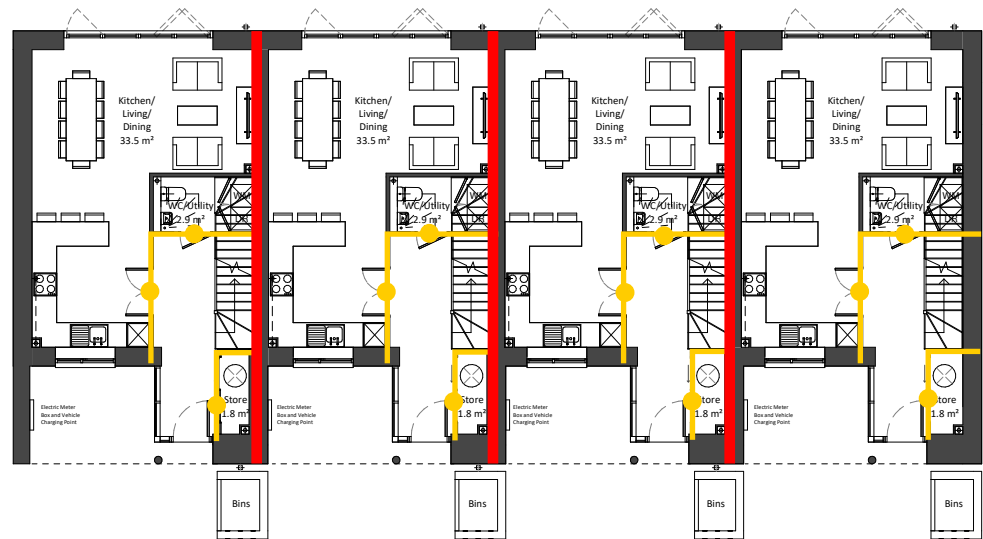
- 60/60 FRR
- 30/30/30 FRR
- FD60S Door
- FD30S Door
- FD60 Door
- FD30 Door

Project Name:	Ham Close, Richmond - Residential		
Drawing Name:	Blocks F & L		
Drawing Reference:	AFF_20700_01_Ham Close, Richmond - Residential_FSD_03		
Date:	07/04/2022	Checked By:	AM
		ED	Approved By: JO

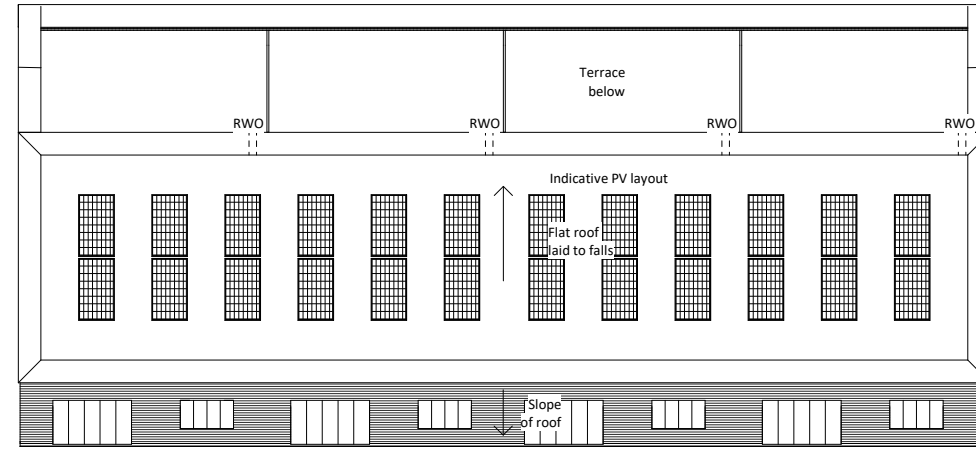




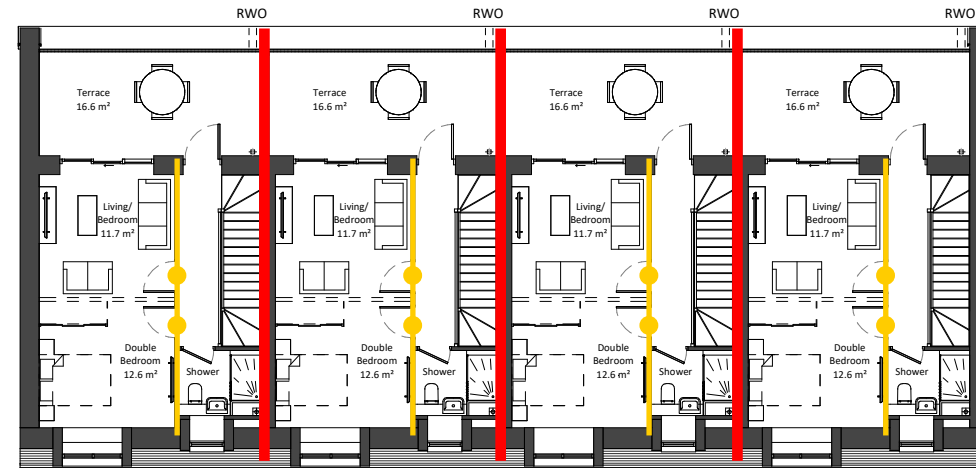
2 First Floor  
1 : 100



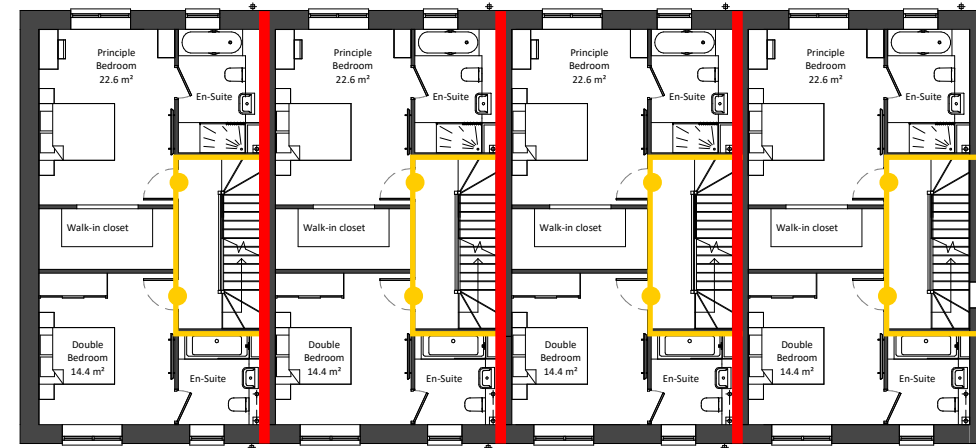
1 Ground Floor  
1 : 100



5 Roof Plan  
1 : 100



4 Third Floor  
1 : 100



3 Second Floor  
1 : 100

60/60/60 FRR  
30/30/30 FRR



FD60S Door  
FD30S Door

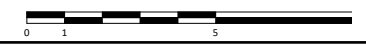


FD60 Door  
FD30 Door



Legend:

Project Name:	Ham Close, Richmond - Residential
Drawing Name:	Block H
Drawing Reference:	AFF_20700_01_Ham Close, Richmond - Residential_FSD_03
Date:	07/04/2022
Drawn By:	AM
Checked By:	ED
Approved By:	JO



## APPENDIX 2. FIRE STRATEGY DRAWINGS – NON RESIDENTIAL (PART 2)