

APPENDIX J HARD AND SOFT LANDSCAPING PLANS



Notes
 Do not scale from this drawing.
 All dimensions are drawn in millimetres.
 Drawing & design copyright LUC.
 Reproduction of this drawing in whole or in part is prohibited without prior permission.

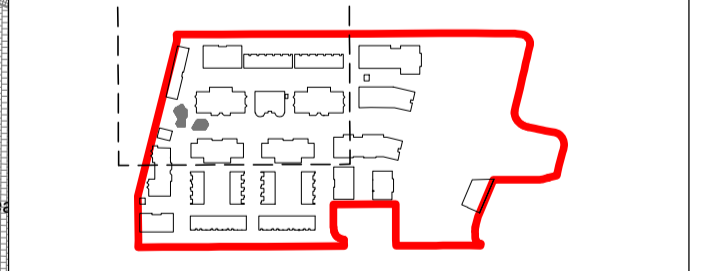
- KEY**
- Extent of works boundary
 - Existing Trees
 - Dashed line indicates Root Protection Area.
 - No-Dig Construction
 - Areas of no-dig construction. For detail refer to Arboricultural Method Statement.
 - Proposed Trees
 - Majority semi-mature with some heavy standards

- Hard Landscape**
- PT1 - Misty Grey Concrete Block Paving 105x140x60mm, 140x140x60mm & 210x140x60mm
 - PT2 - Graphite Grey Concrete Block Paving 105x140x60
 - PT3 - Misty Grey Concrete Block Paving 105x140x60mm
 - PT4 - Graphite Grey Concrete Block Paving 210x140x60mm
 - PT5 - Graphite Grey Concrete Block Paving 210x140x60mm
 - PT6 - Buff Concrete Block Paving 200x200x80mm & 200x300x80mm
 - PT7 - Pearl Grey Concrete Block Paving 200x100x80mm
 - PT8 - Burnt Oak Concrete Block Paving 105x140x60mm, 140x140x60mm & 210x140x60mm
 - PT9 - Silver Grey Concrete Sett Feature Banding 100x100x100mm
 - PT10 - Buff Concrete Pavers 450x450x38mm
 - PT11 - Buff Resin Bound Gravel
 - PT12 - Macadam
 - PT13 - Existing Macadam Retained
 - PT14 - Self-binding Gravel
 - PT15 - Rubber Safety Surface

- Street Furniture**
- F1 - Demountable Bollard
 - F2 - Cycle Stand
 - F3 - Bench - timber top over stone gabion
 - F4 - Picnic Table
 - F5 - Bleacher
 - F6 - Informal Doorstep Play using reclaimed timber from site
 - F7 - Ventilation turret with integrated seating, insect hotel and biodiverse roof
- Catalogue Play Equipment**
- P1 - Robinia Climbing Frame
 - P2 - Clatter Bridge
 - P3 - Wobble Dish
 - P4 - Robinia Seesaw and Balance Beam
 - P5 - Robinia Climbing Frame & Net
 - P6 - Robinia Hammock
 - P7 - Balance Beam Bench

- Illustrative Boundaries**
- B1 - 1800mm High railing with matching gate where shown
 - B2 - 1800mm High brick wall, to match facade interface
 - B3 - 1000mm High railing with matching gate where shown
 - B4 - 1800mm High timber hit and miss fence with trellis to top 300mm and matching gate where shown
 - B5 - 1000mm High estate rail
 - B6 - Parapet Wall, to architects detail
 - BW - 1800mm High brick wall, using reclaimed bricks from existing boundary

- Misc**
- CS - Cycle Store, to architect's specification
 - BS - Bin Store, to architect's specification



PR2	01.03.22	For Approval	AT	JL
PR1	01.03.22	Design Freeze	AT	JL
Iss	Date	Description	Drn	Chk

LUC LUC London
 250 Waterloo Road, London, SE1 8RD
 +44 (0)20 7383 5784
 london@landuse.co.uk
 www.landuse.co.uk

Project
HAM CLOSE REGENERATION

Client
HILL RESIDENTIAL

Scale @A1
 1:250

Status
FOR APPROVAL

Drawing Title
HARD LANDSCAPE GENERAL ARRANGEMENT (SHEET 1 OF 4)

Job Nr
 11265

Drawing Nr
 LD-PLN-201

Issue
 P02

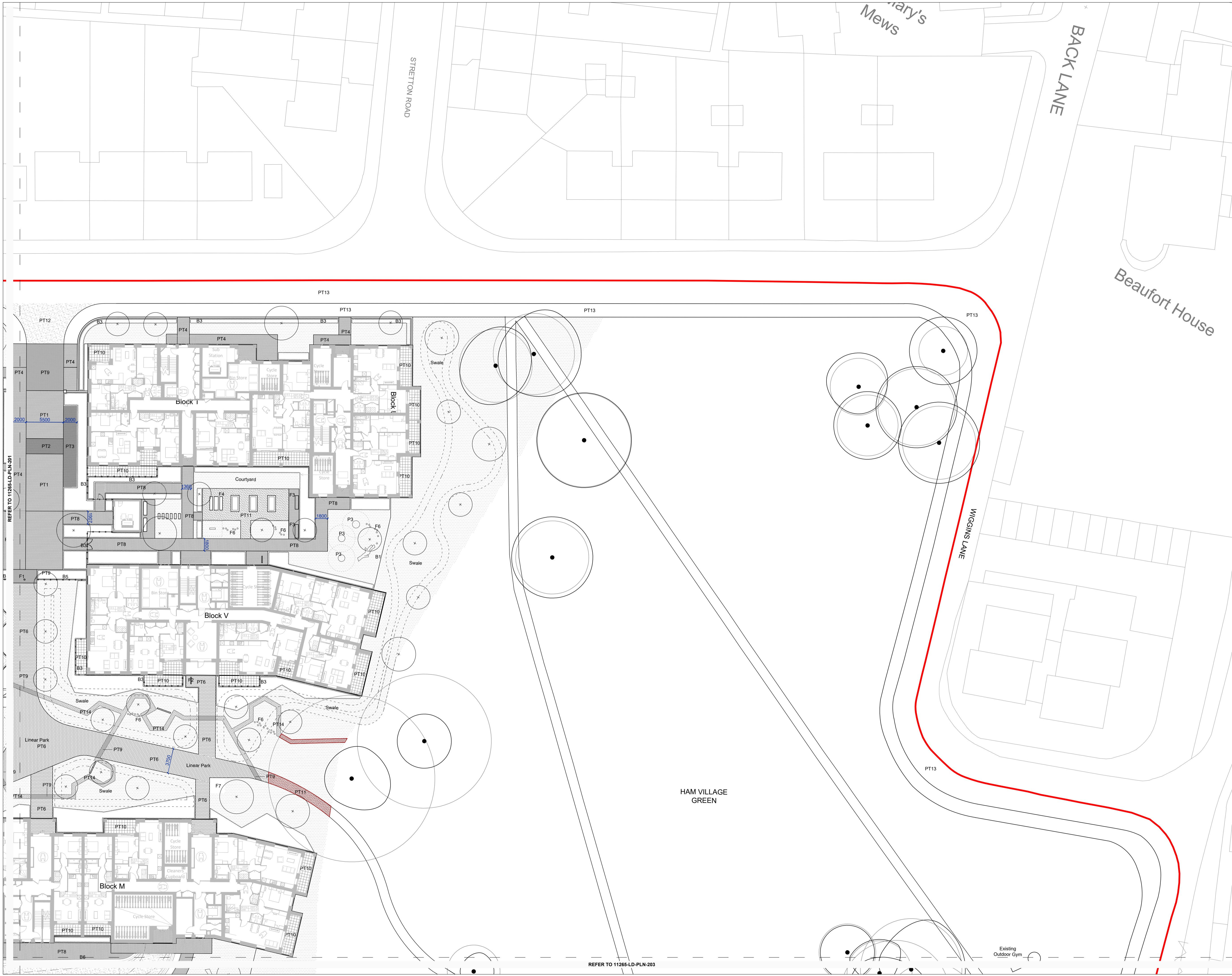
WOODVILLE CENTRE

WOODVILLE ROAD

STUART ROAD

REFER TO 11265-LD-PLN-202

REFER TO 11265-LD-PLN-204



Notes
 Do not scale from this drawing.
 All dimensions are drawn in millimetres.
 Drawing & design copyright LUC.
 Reproduction of this drawing in whole or in part is prohibited without prior permission.

- KEY**
- Extent of works boundary
 - Existing Trees
Dashed line indicates Root Protection Area.
 - No-Dig Construction
Areas of no-dig construction. For detail refer to Arboricultural Method Statement.
 - Proposed Trees
Majority semi-mature with some heavy standards

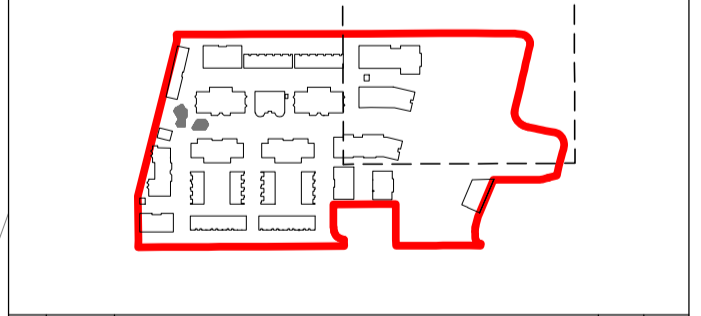
- Hard Landscape**
- PT1 - Misty Grey Concrete Block Paving
105x140x60mm, 140x140x60mm & 210x140x60mm
 - PT2 - Graphite Grey Concrete Block Paving
105x140x60
 - PT3 - Misty Grey Concrete Block Paving
105x140x60mm
 - PT4 - Graphite Grey Concrete Block Paving
210x140x60mm
 - PT5 - Graphite Grey Concrete Block Paving
210x140x60mm
 - PT6 - Buff Concrete Block Paving
200x200x80mm & 200x300x80mm
 - PT7 - Pearl Grey Concrete Block Paving
200x100x80mm
 - PT8 - Burnt Oak Concrete Block Paving
105x140x60mm, 140x140x60mm & 210x140x60mm
 - PT9 - Silver Grey Concrete Sett Feature Banding
100x100x100mm
 - PT10 - Buff Concrete Pavers
450x450x30mm
 - PT11 - Buff Resin Bound Gravel
 - PT12 - Macadam
 - PT13 - Existing Macadam Retained
 - PT14 - Self-binding Gravel
 - PT15 - Rubber Safety Surface

- Street Furniture**
- F1 - Demountable Bollard
 - F2 - Cycle Stand
 - F3 - Bench - timber top over stone gabion
 - F4 - Picnic Table
 - F5 - Bleacher
 - F6 - Informal Doorstep Play using reclaimed timber from site
 - F7 - Ventilation turret with integrated seating, insect hotel and biodiverse roof

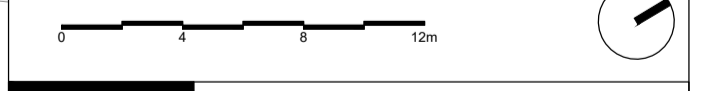
- Catalogue Play Equipment**
- P1 - Robinia Climbing Frame
 - P2 - Clatter Bridge
 - P3 - Wobble Dish
 - P4 - Robinia Seesaw and Balance Beam
 - P5 - Robinia Climbing Frame & Net
 - P6 - Robinia Hammock
 - P7 - Balance Beam Bench

- Illustrative Boundaries**
- B1 - 1800mm High railing with matching gate where shown
 - B2 - 1800mm High brick wall, to match facade interface
 - B3 - 1000mm High railing with matching gate where shown
 - B4 - 1800mm High timber hit and miss fence with trellis to top 300mm and matching gate where shown
 - B5 - 1000mm High estate rail
 - B6 - Parapet Wall, to architects detail
 - BW - 1800mm High brick wall, using reclaimed bricks from existing boundary

- Misc**
- CS - Cycle Store, to architect's specification
 - BS - Bin Store, to architect's specification



Rev	Date	Description	Drn	Chk
P02	07.03.22	For Approval	AT	JL
P01	01.03.22	Design Freeze	AT	JL



LUC LUC London
 250 Waterloo Road, London, SE1 8RD
 +44 (0)20 7383 5784
 london@landuse.co.uk
 www.landuse.co.uk

Project HAM CLOSE REGENERATION	
Client HILL RESIDENTIAL	
Scale @A1 1:250	Status FOR APPROVAL
Drawing Title HARD LANDSCAPE GENERAL ARRANGEMENT (SHEET 2 OF 4)	
Job Nr 11265	Drawing Nr LD-PLN-202
	Issue P02

REFER TO 11265-LD-PLN-201

REFER TO 11265-LD-PLN-203

REFER TO 11265-LD-PLN-202



Notes
 Do not scale from this drawing.
 All dimensions are drawn in millimetres.
 Drawing & design copyright LUC.
 Reproduction of this drawing in whole or in part is prohibited without prior permission.

- KEY**
- Extent of works boundary
 - Existing Trees
 - Dashed line indicates Root Protection Area.
 - No-Dig Construction
 - Areas of no-dig construction. For detail refer to Arboricultural Method Statement.
 - Proposed Trees
 - Majority semi-mature with some heavy standards

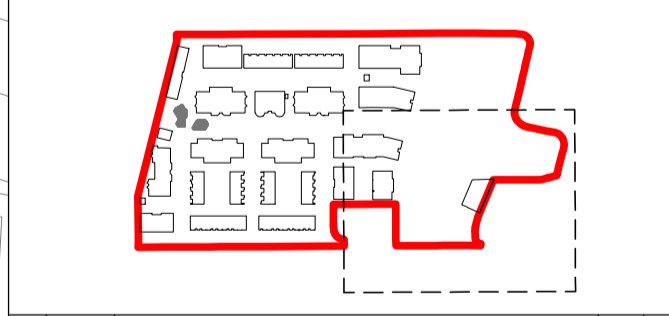
- Hard Landscape**
- PT1 - Misty Grey Concrete Block Paving 105x140x60mm, 140x140x60mm & 210x140x60mm
 - PT2 - Graphite Grey Concrete Block Paving 105x140x60
 - PT3 - Misty Grey Concrete Block Paving 105x140x60mm
 - PT4 - Graphite Grey Concrete Block Paving 210x140x60mm
 - PT5 - Graphite Grey Concrete Block Paving 210x140x60mm
 - PT6 - Buff Concrete Block Paving 200x200x80mm & 200x300x80mm
 - PT7 - Pearl Grey Concrete Block Paving 200x100x80mm
 - PT8 - Burnt Oak Concrete Block Paving 105x140x60mm, 140x140x60mm & 210x140x60mm
 - PT9 - Silver Grey Concrete Sett Feature Banding 100x100x100mm
 - PT10 - Buff Concrete Pavers 450x450x30mm
 - PT11 - Buff Resin Bound Gravel
 - PT12 - Macadam
 - PT13 - Existing Macadam Retained
 - PT14 - Self-binding Gravel
 - PT15 - Rubber Safety Surface

- Street Furniture**
- F1 - Demountable Bollard
 - F2 - Cycle Stand
 - F3 - Bench - timber top over stone gabion
 - F4 - Picnic Table
 - F5 - Bleacher
 - F6 - Informal Doorstep Play using reclaimed timber from site
 - F7 - Ventilation turret with integrated seating, insect hotel and biodiverse roof

- Catalogue Play Equipment**
- P1 - Robinia Climbing Frame
 - P2 - Clatter Bridge
 - P3 - Wobble Dish
 - P4 - Robinia Seesaw and Balance Beam
 - P5 - Robinia Climbing Frame & Net
 - P6 - Robinia Hammock
 - P7 - Balance Beam Bench

- Illustrative Boundaries**
- B1 - 1800mm High railing with matching gate where shown
 - B2 - 1800mm High brick wall, to match facade interface
 - B3 - 1000mm High railing with matching gate where shown
 - B4 - 1800mm High timber hit and miss fence with trellis to top 300mm and matching gate where shown
 - B5 - 1000mm High estate rail
 - B6 - Parapet Wall, to architects detail
 - BW - 1800mm High brick wall, using reclaimed bricks from existing boundary

- Misc**
- CS - Cycle Store, to architect's specification
 - BS - Bin Store, to architect's specification



Iss	Date	Description	Drn	Chk
P02	07.03.22	For Approval	AT	JL
P01	01.03.22	Design Freeze	AT	JL

LUC LUC London
 250 Waterloo Road, London, SE1 8RD
 +44 (0)20 7383 5784
 london@landuse.co.uk
 www.landuse.co.uk

Project
HAM CLOSE REGENERATION

Client
HILL RESIDENTIAL

Scale @A1
 1:250

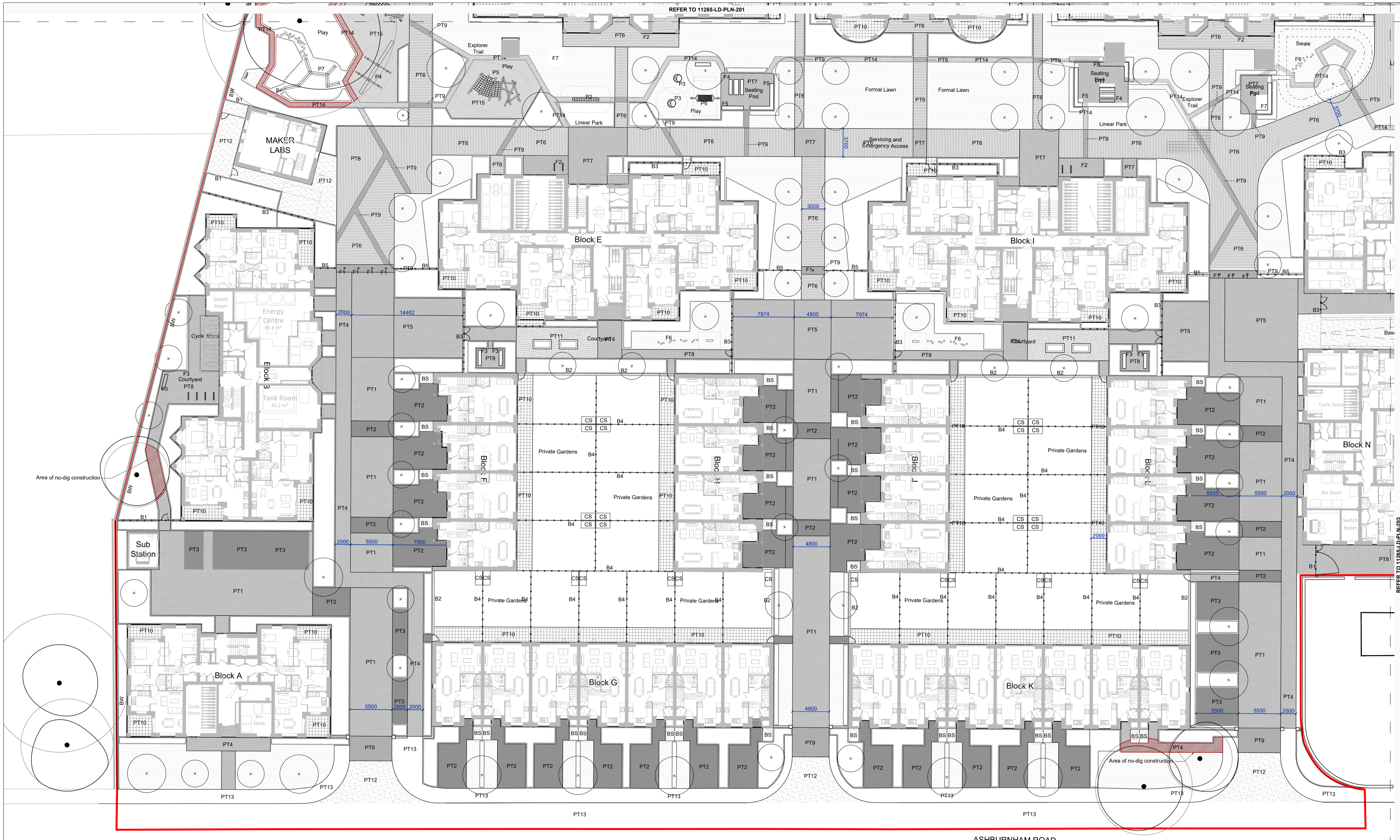
Status
FOR APPROVAL

Drawing Title
**HARD LANDSCAPE
 GENERAL ARRANGEMENT (SHEET 3 OF 4)**

Job Nr
 11265

Drawing Nr
 LD-PLN-203

Issue
 P02



Notes
 Do not scale from this drawing.
 All dimensions are drawn in millimetres.
 Drawing & design copyright LUC.
 Reproduction of this drawing in whole or in part is prohibited without prior permission.

KEY

- Extent of works boundary
- Existing Trees
- No-Dig Construction
- Proposed Trees

Hard Landscape

- PT1 - Misty Grey Concrete Block Paving 105x140x60mm, 140x140x60mm & 210x140x60mm
- PT2 - Graphite Grey Concrete Block Paving 105x140x60
- PT3 - Misty Grey Concrete Block Paving 105x140x60mm
- PT4 - Graphite Grey Concrete Block Paving 210x140x60mm
- PT5 - Graphite Grey Concrete Block Paving 210x140x60mm
- PT6 - Buff Concrete Block Paving 200x200x80mm & 200x300x80mm
- PT7 - Pearl Grey Concrete Block Paving 200x100x80mm
- PT8 - Burnt Oak Concrete Block Paving 105x140x60mm, 140x140x60mm & 210x140x60mm
- PT9 - Silver Grey Concrete Set Feature Banding 100x100x100mm
- PT10 - Buff Concrete Pavers 450x450x30mm
- PT11 - Buff Resin Bound Gravel
- PT12 - Macadam
- PT13 - Existing Macadam Retained
- PT14 - Self-binding Gravel
- PT15 - Rubber Safety Surface

Street Furniture

- F1 - Demountable Bollard
- F2 - Cycle Stand
- F3 - Bench - timber top over stone gabion
- F4 - Picnic Table
- F5 - Bleacher
- F6 - Informal Doorstep Play using reclaimed timber from site
- F7 - Ventilation turret with integrated seating, insect hotel and biodiverse roof

Catalogue Play Equipment

- P1 - Robinia Climbing Frame
- P2 - Clatter Bridge
- P3 - Wobble Dish
- P4 - Robinia Seesaw and Balance Beam
- P5 - Robinia Climbing Frame & Net
- P6 - Robinia Hammock
- P7 - Balance Beam Bench

Illustrative Boundaries

- B1 - 1800mm High railing with matching gate where shown
- B2 - 1800mm High brick wall, to match facade interface
- B3 - 1000mm High railing with matching gate where shown
- B4 - 1800mm High timber hit and miss fence with trellis to top 300mm and matching gate where shown
- B5 - 1000mm High estate rail
- B6 - Parapet Wall, to architects detail
- BW - 1800mm High brick wall, using reclaimed bricks from existing boundary

Misc

- CS - Cycle Store, to architect's specification
- BS - Bin Store, to architect's specification

No	Date	Description	DN	CK
P02	07.03.22	For Approval	AT	JL
P01	01.03.22	Design Freeze	AT	JL

LUC LUC London
 250 Waterloo Road, London, SE1 8RD
 +44 (0)20 7383 5784
 london@lucdesign.co.uk
 www.lucdesign.co.uk

Project
HAM CLOSE REGENERATION

Client
HILL RESIDENTIAL

Scale @A1 Status
 1:250 FOR APPROVAL

Drawing Title
**HARD LANDSCAPE
 GENERAL ARRANGEMENT (SHEET 4 OF 4)**

Job Nr 11265 Drawing Nr LD-PLN-204 Issue P02