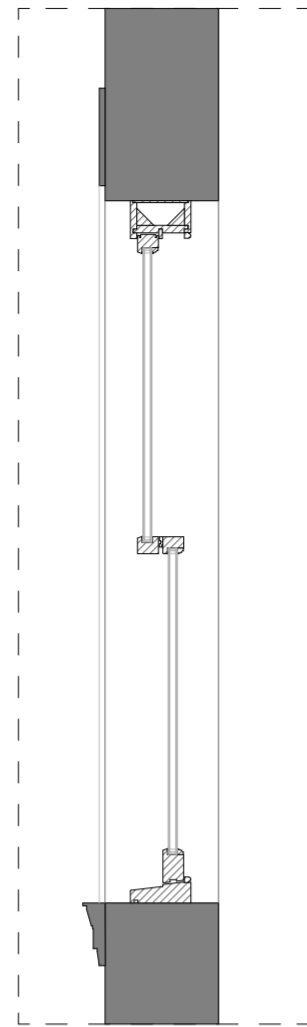
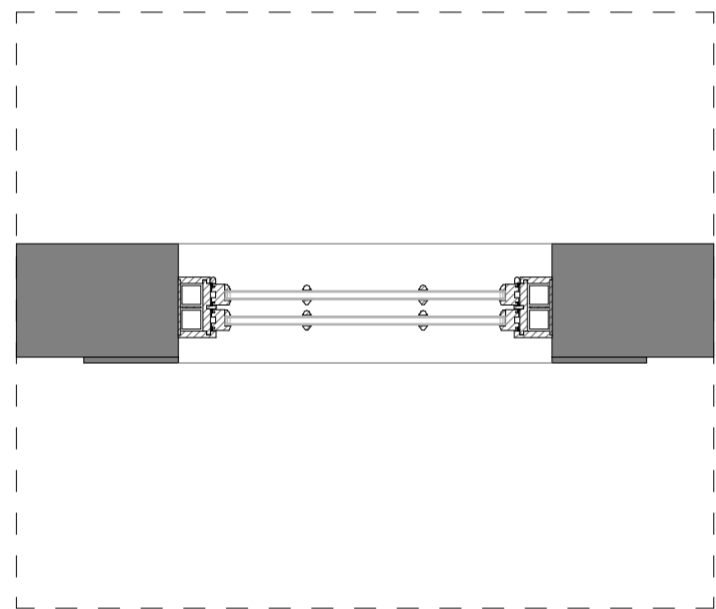




Detail 1 - Elevation

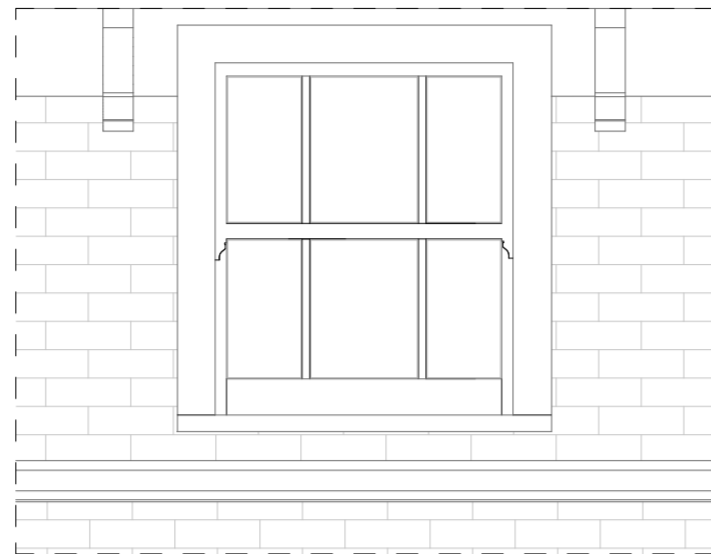


Detail 1 - Section

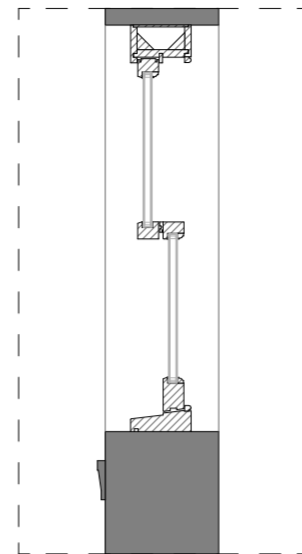


Detail 1 - Plan

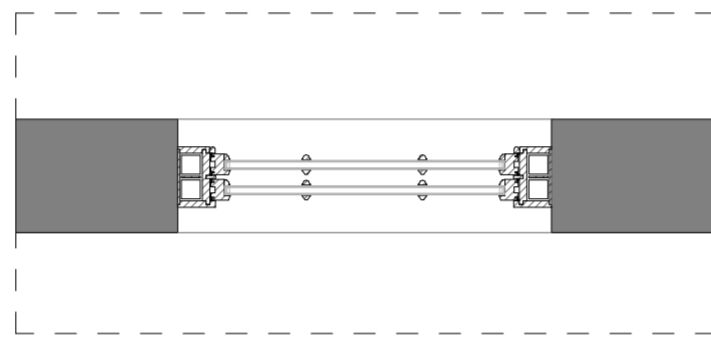
Note:
Double glazed timber window painted white. Window Elevation to match existing heritage sash window.



Detail 2 - Elevation

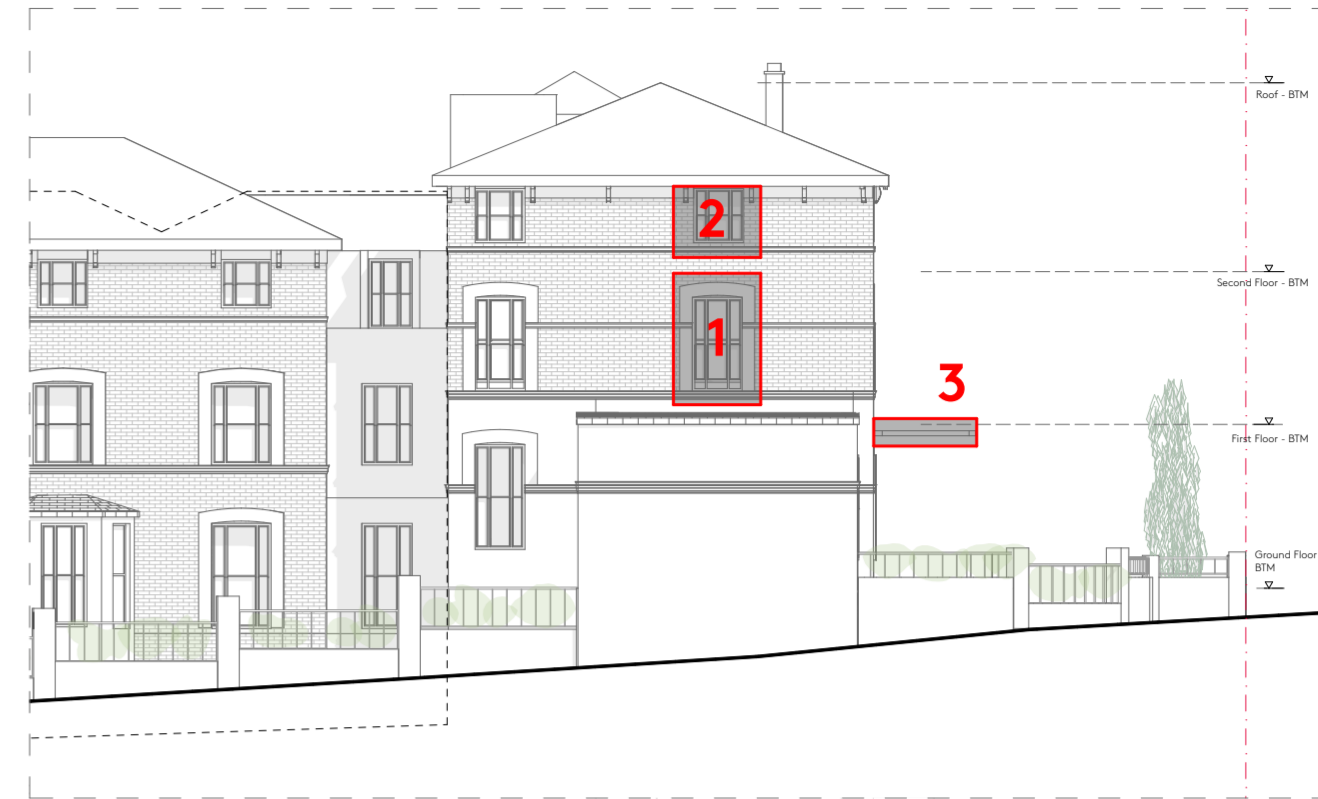


Detail 2 - Section



Detail 2 - Plan

Note:
Double glazed timber window painted white. Window Elevation to match existing heritage sash window.

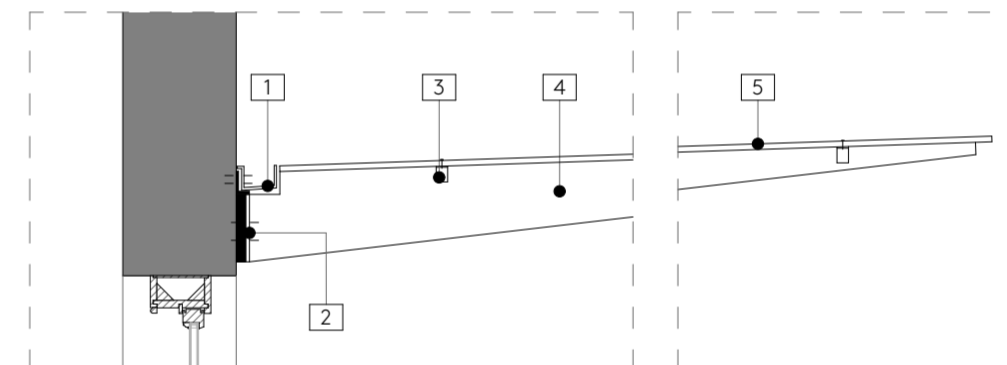


Key - Church Rd Elevation

- 1. First Floor New Traditional Sash Window
- 2. Second Floor New Traditional Sash Window
- 3. Glass Canopy



Detail 3 - Elevation

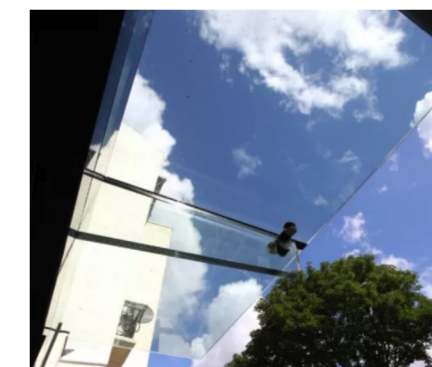


Detail 3 - Section

Material Key

- 1. Metal gutter
- 2. Structural steel plate
- 3. One point glass support
- 4. Structural glass beam
- 5. Laminated glass

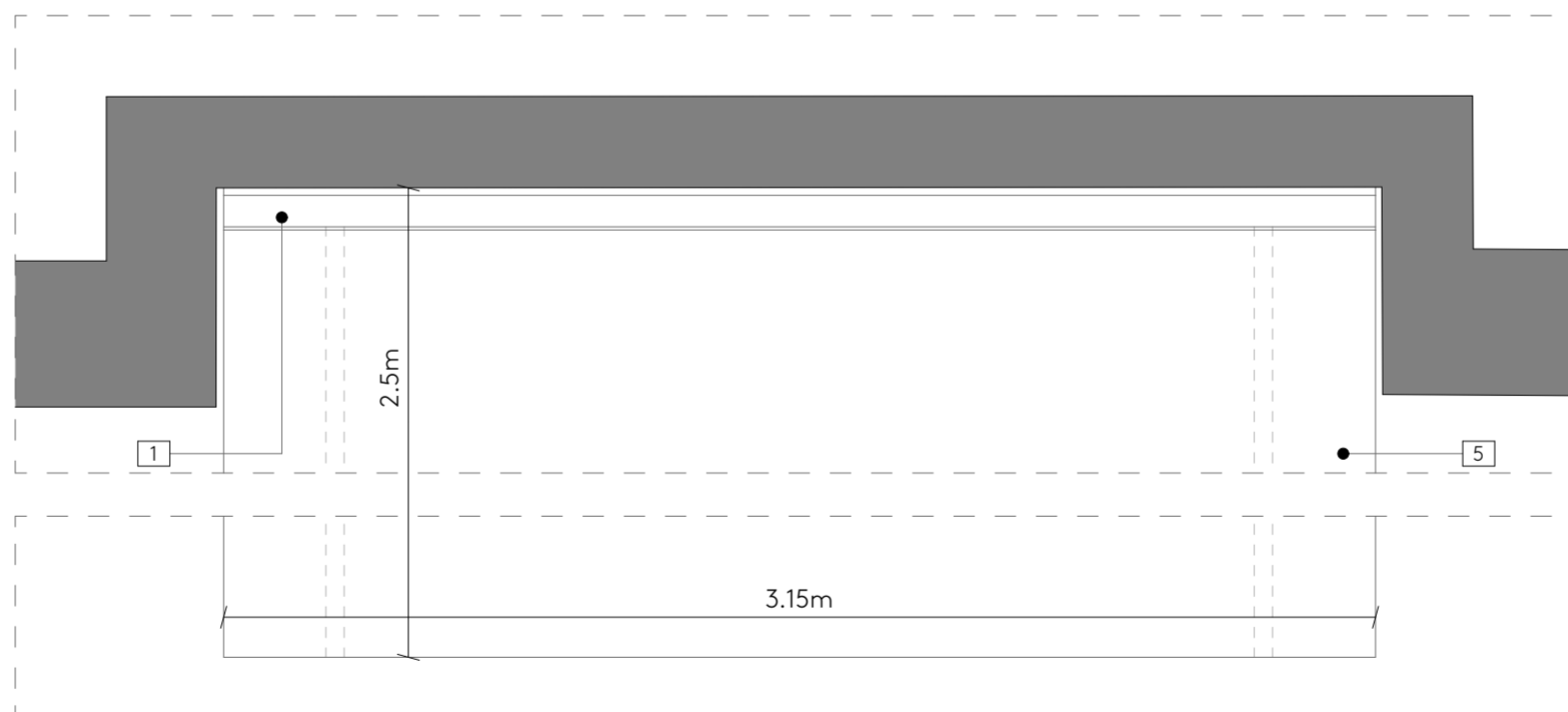
Glass canopy precedents



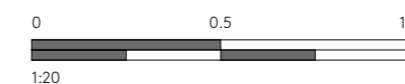
Glass cantilever canopy



Glass beam



Detail 3 - Plan



Existing heritage windows on Sheen Rd



First Floor window on Sheen Rd



Second Floor window on Sheen Rd

Issue		
No.	Date	Comment
P1	06/05/22	PLANNING APPLICATION

Notes	
DO NOT SCALE FROM THIS DRAWING.	DO NOT USE ANY AREAS INDICATED FOR EITHER VALUATION, PURCHASE SALE OR ANY OTHER FORM OF LEGALLY BINDING CONTRACT.
DO NOT REPRODUCE ANY PART OF THIS DRAWING WITHOUT PRIOR WRITTEN CONSENT. THIS DRAWING REMAINS THE COPYRIGHT OF ACKROYD LOWRIE LTD.	

Key	

Project 888 - Richmond Rehab Centre			Dwg Title Facade Details (BTM)		
Client Bridges Fund Management Ltd.			Dwg No. 888-150		
Date APRIL 2022	Drawn YC	Checked OL	Scale 1:20	Current Stage PLANNING	Issue P1