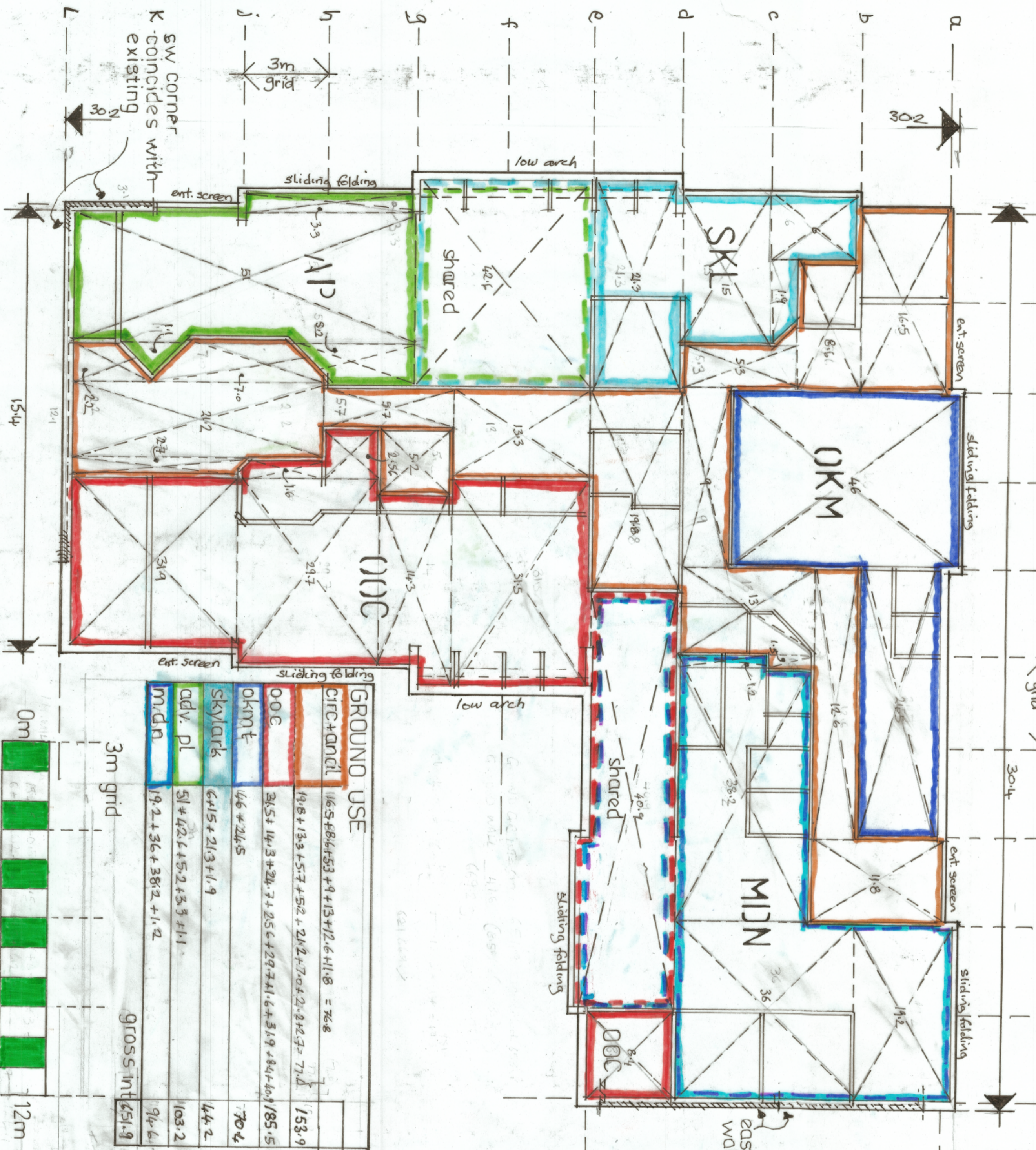
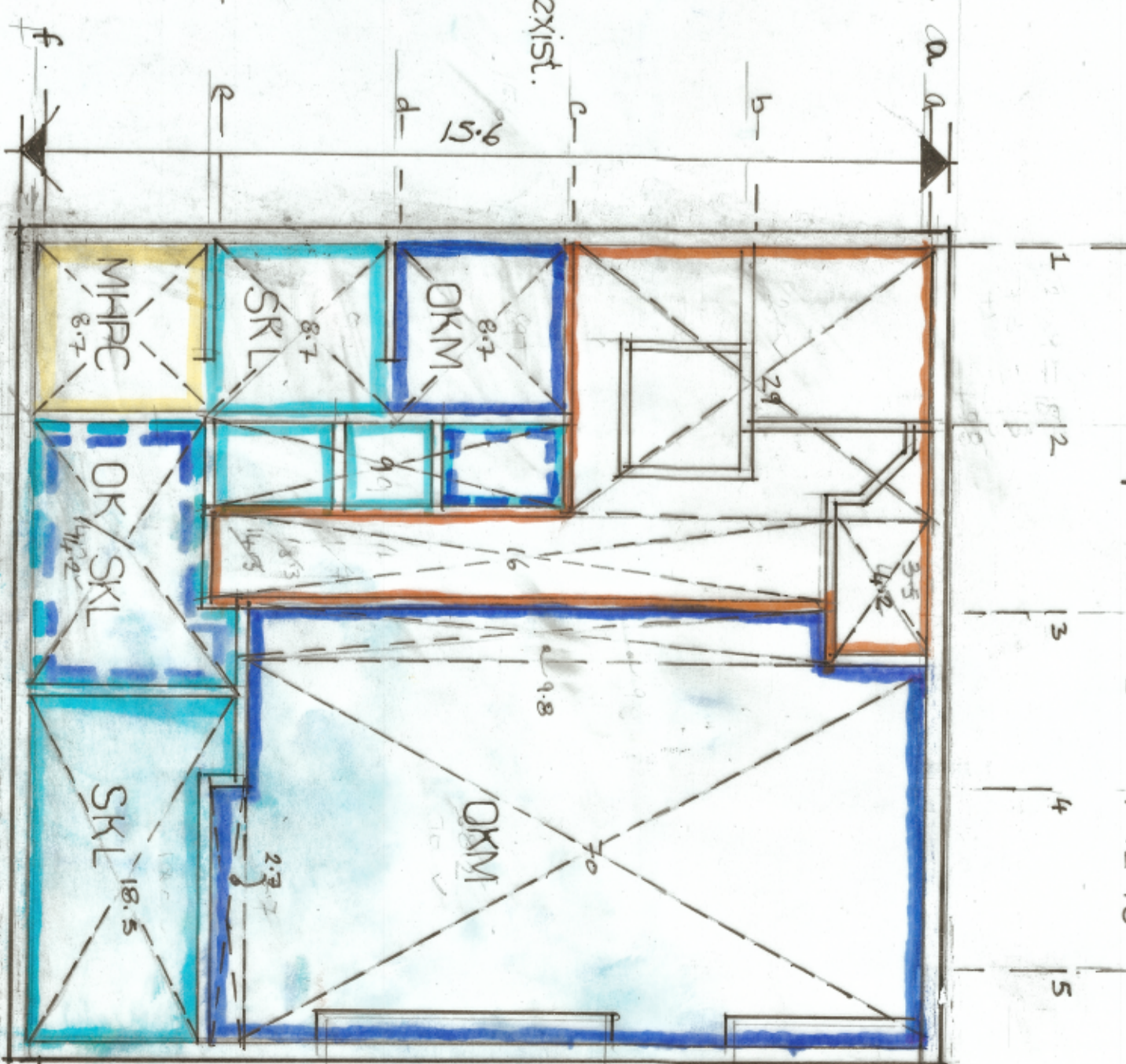
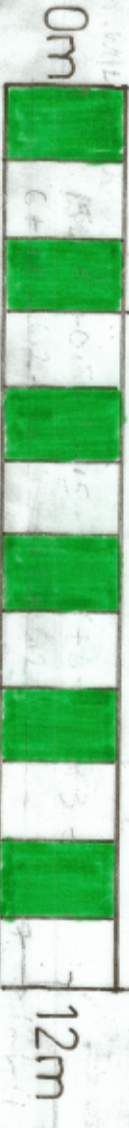


# VERIFICATION OF BUILDING AREAS WITH EX'T. DIVIS

1.12.21  
subsequent to sub. rev. 7.12.19



GROUND USE		
Circ+andl	116.5+84.4+53+9+13+12.6+11.8 = 76.8	
OOC	19.8+13.3+5.7+5.2+21.2+7.0+2.2+2.7 = 77.4	153.9
okmt	21.5+14.3+24.7+25.6+29.7+11.6+31.9+84.4 = 185.5	70.4
skylark	6+15+21.3+1.9	44.2
adv. pl	51+42.6+5.2+3.3+1.1	103.2
m.dn	19.2+36+38.2+1.2	94.6
gross int		651.9



FIRST FLOOR USE		
Circ+	29+42+16	49.2
okmt	8.7+9.8+70.2+2.7	91.4
SKL	8.7+9+14.2+18.5	50.4
mhpt	8.7	8.7
gross int		199.7

TOTAL GROSS INT. 651+199 = 850 m<sup>2</sup>  
footprint 651+4.9 wall = 700 m<sup>2</sup>