

**Flat Block M**

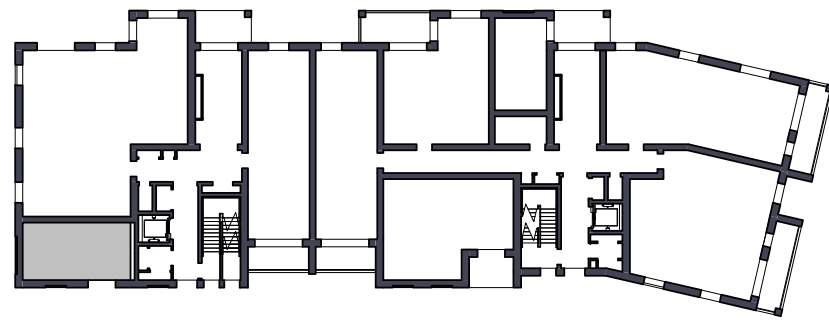
Phase 3  
6 Storeys  
52 Dwellings

**Affordable Rent Reprovision**

38 x 1B2P  
9 x 2B4P  
2 x 3B5P  
1 x 1B2P W  
1 x 2B3P W  
1 x 3B5P W



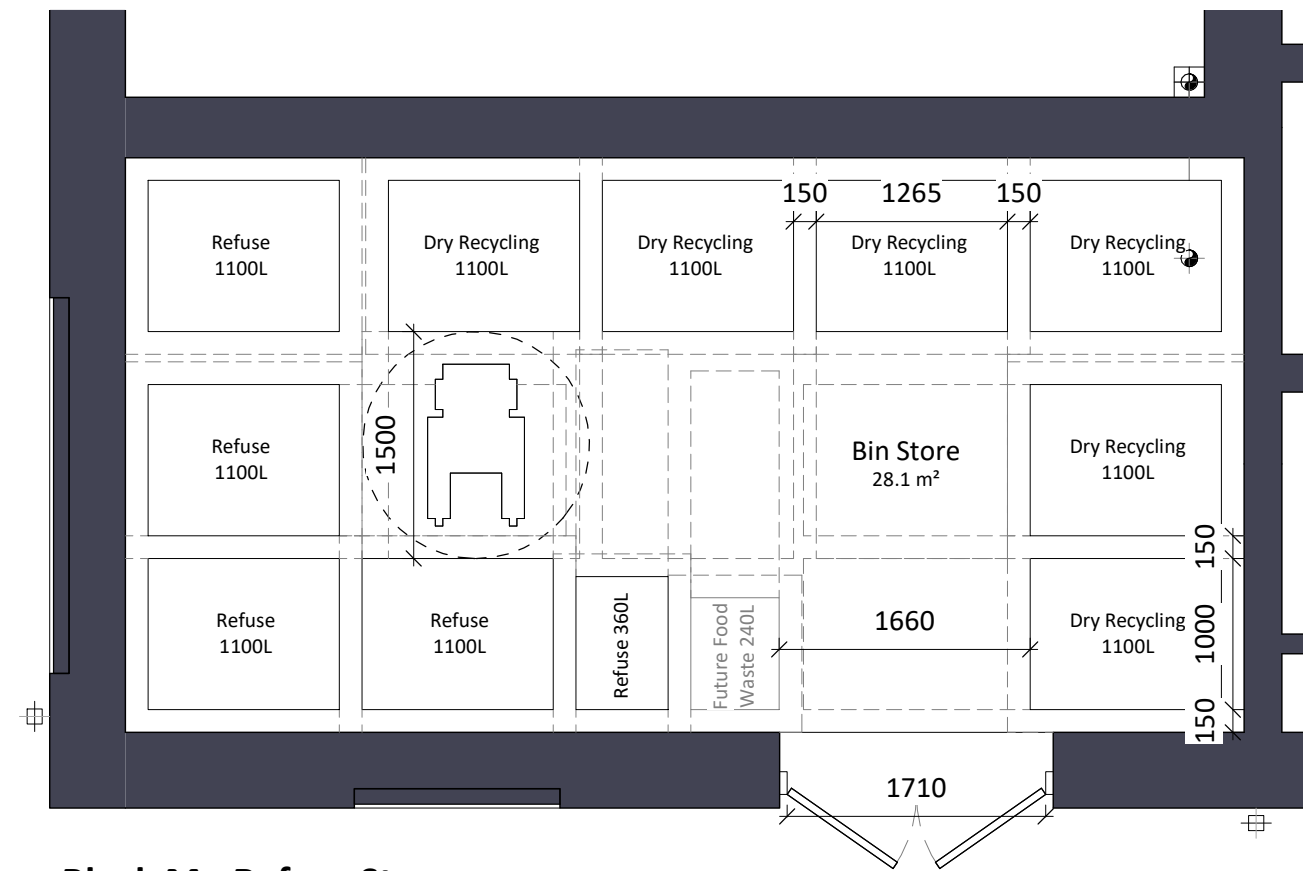
**Location Plan**



**Block M - Ground Floor Plan**

Bulky items storage located in Block N.

Bin store will be managed by on site caretakers, rotating bins to allow access when needed.



**Block M - Refuse Store**

**Provisions Requirements:**

'Refuse and Recycling Storage Requirements'  
London Borough of Richmond upon Thames, Local Plan  
April 2015

- 1.3. Refuse storage capacity**
- 1.3.2. Developments using communal refuse storage containers**
  - Storage capacity of 70 litres per bedroom.

Block M: 68 Bedrooms  
68 x 70 = 4760 litres  
Block M provides 4760 litres of refuse storage.

- 1.4. Dry recycling storage capacity**
- 1.4.2. Flats of three or more units**
  - 46 to 70 households served by bin area.
  - Required:
  - 3 x 1100 litres Mixed paper, card and carton recycling bins
  - 3 x 1100 litres Mixed container recycling bins

Block M: 52 Dwellings  
Provided:

- 3 x 1100 litres Mixed paper, card and carton recycling bins
- 3 x 1100 litres Mixed container recycling bins

**Notes:**  
Do not scale. All dimensions are in millimetres unless otherwise stated. This drawing should be read in conjunction with all relevant project information and contract documentation. All dimensions to be checked prior to fabrication and or commencement of works. All works to comply with all relevant legal standards, building regulations and warranty provider requirements. Report any discrepancies, if in doubt ask.

Revisions:					
Rev	Status	Date	Description	Drn	Chkd
C01	A3	24.05.22	Planning Issue	SC	CD

Client Name:		Hill Residential			
Project Name:		Ham Close Regeneration			
Drawing Name:		Block M Ground Floor - Refuse Store Plan			
Drawing Number:		HCR-BPTW-B13-00-DR-A-5907		Rev:	Status:
				C01	A3
Project No:	RIBA Stage:	Drawn By:	Scale:		
21-090	3	SC	1:50 @ A3		

**PLANNING ISSUE**

40 Norman Road,  
Greenwich, London  
SE10 9QX

t. 020 8293 5175  
bptw.co.uk

