

PLANNING

RED NOTES/ SHOW AMENDMENTS TO ORIGINAL PLANNING APPLICATION

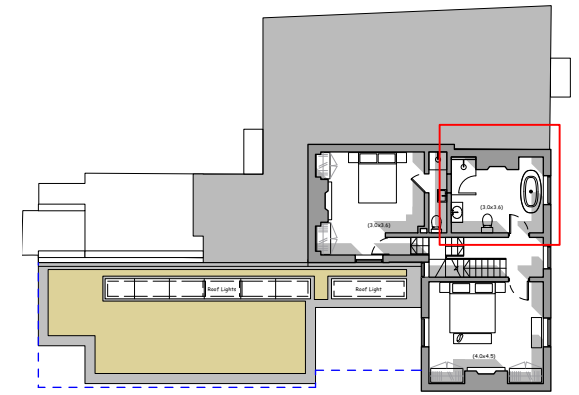
NEW BATHROOM

New water supply & drainage runs between existing floor joists, connecting to existing drainage in adjoining WC.

Access for works from floor above to avoid damage to ceiling below

- Existing drainage
- Proposed drainage
- Existing Floor Joists

Original application proposal for internal partitions removed to ensure minimal impact on existing building fabric.



Key Plan

