

PLANNING

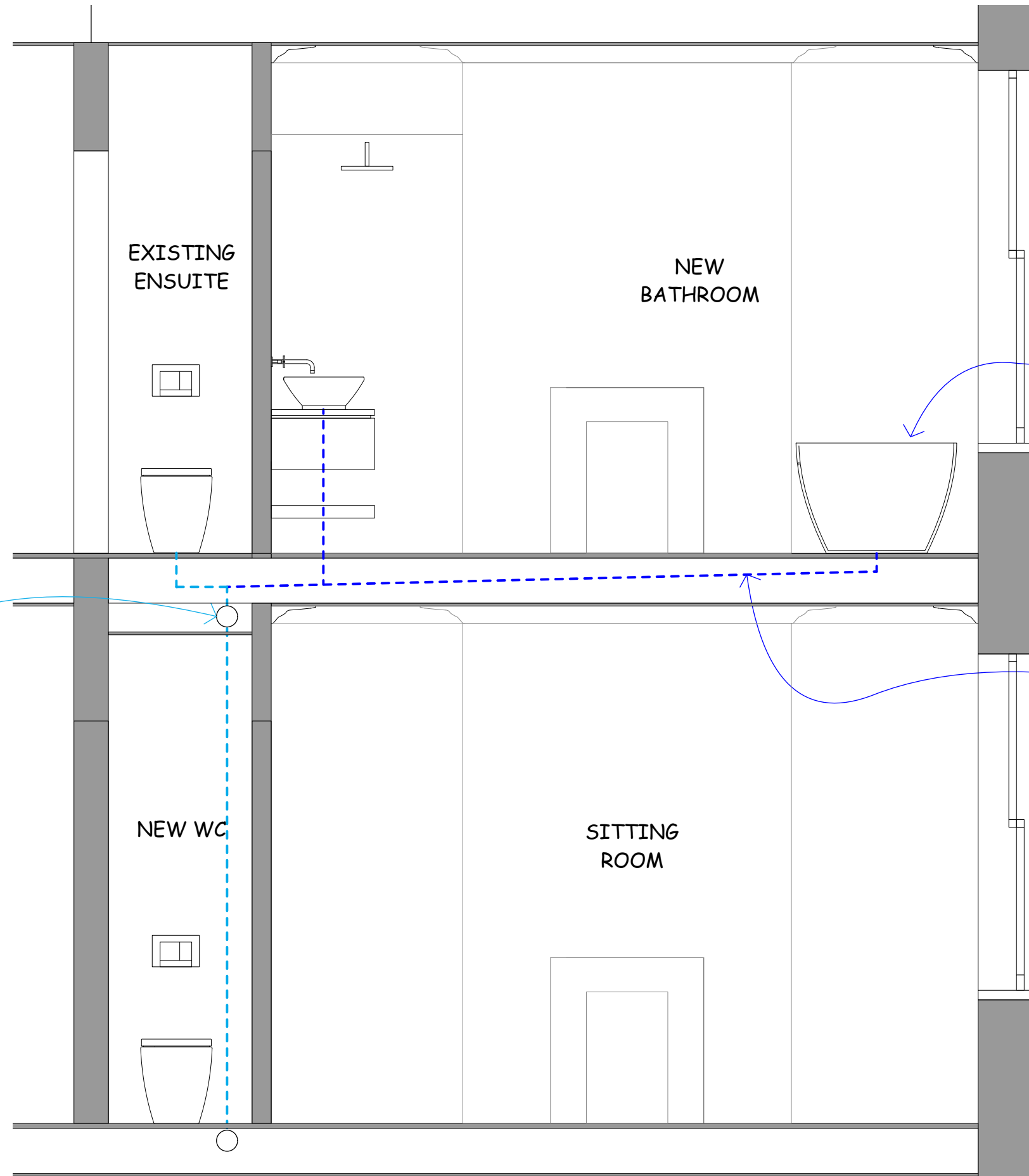
----- Existing drainage
----- Proposed drainage

Existing drainage

Original application proposal for internal partions removed to ensure minmial impact on existing building fabric.

New lightweight free standing bath

New water supply & drainage runs between existing floor joists, connecting to existing drainage in adjoining WC. Access for works from floor above to avoid damage to ceiling below



2

Proposed Bathroom Section
Scale: 1:25

0 1 2 M