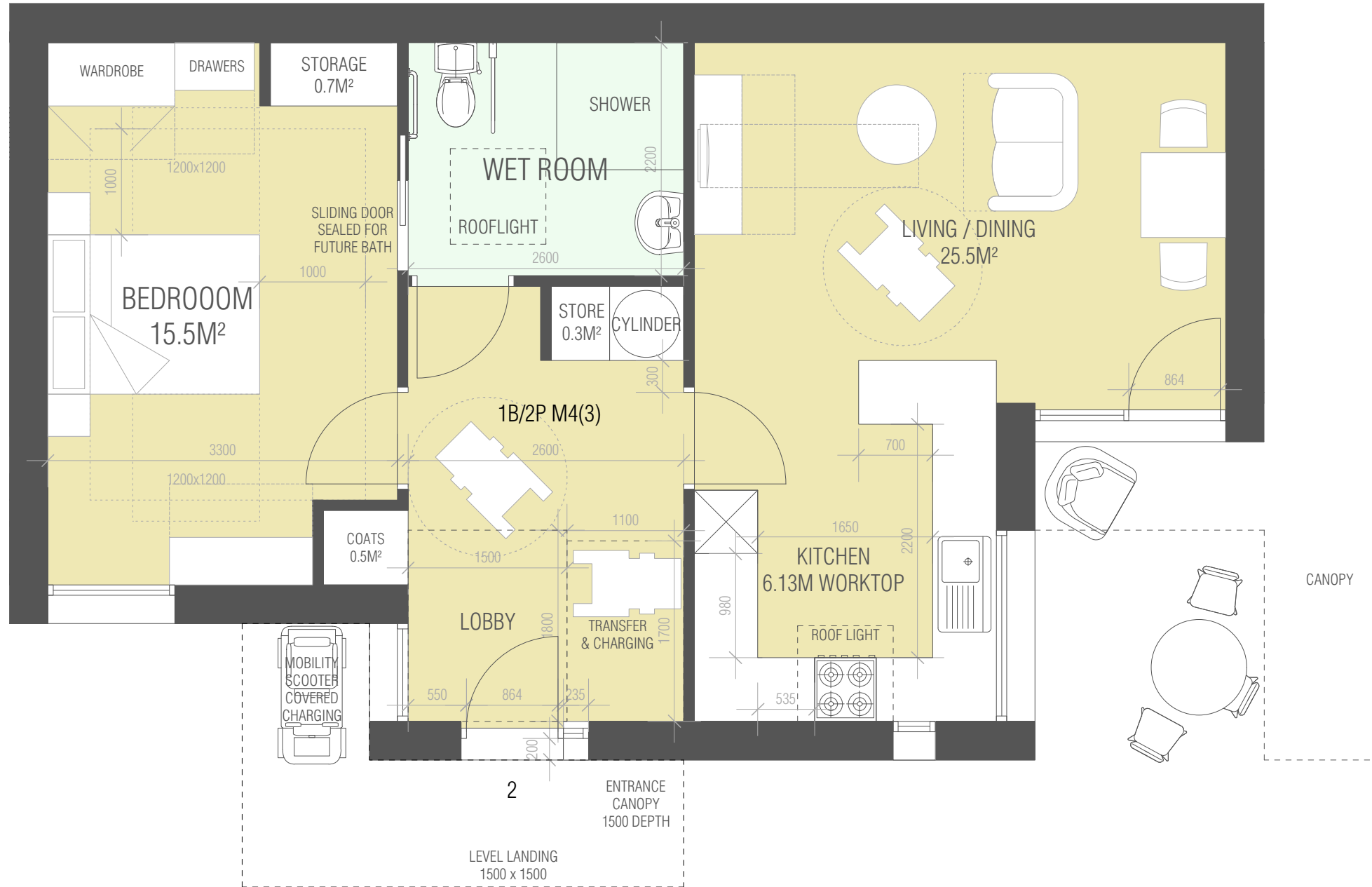
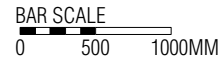


TYPICAL FLOOR PLAN - UNITS 2, 3, 4
 GIA 60M²
 1:50



NOTES:
 KITCHEN WORKTOP 6.13M
 BUILT-IN STORAGE 1.5M²

Revisions

Project ST MARY'S GROVE GARAGES, RICHMOND, TW9		
Drawing TYPICAL FLOOR PLAN - UNITS 2, 3, 4		
Drawing No. SMGG21-06	Scale 1:50 @ A3	Date 11.05.2022

CLIVE CHAPMAN
ARCHITECTS
 SUSTAINABILITY CONSULTANTS
 4 EEL PIE ISLAND
 TWICKENHAM MIDDX
 TW20 2DY
 TELEPHONE 020 8891 4837
 EMAIL INFO@CCAR.CO.UK
 WEBSITE WWW.CCAR.CO.UK